



# Wisconsin Crop Weather

Compiled by the Wisconsin Field Office of  
USDA's National Agricultural Statistics Service

August 28, 2006

Vol. 06, No. 21

## Powerful Storms Arrive

Strong thunderstorms came through most of the state last week, improving some crops, but causing hail damage to others. Rainfall totals ranged from 0.71 inches in Milwaukee to 3.12 inches in Madison. Temperatures were at or above average last week, ranging from 0 to 3 degrees above normal. Average high temperatures were in the high 70s to low 80s in most areas. Lows averaged in the high 50s to low 60s for the week. Soil moisture conditions were at 5 percent very short, 19 percent short, 65 percent adequate, and 11 percent surplus. Last week there was an average of 4.7 days suitable for fieldwork in Wisconsin, due to the rain.

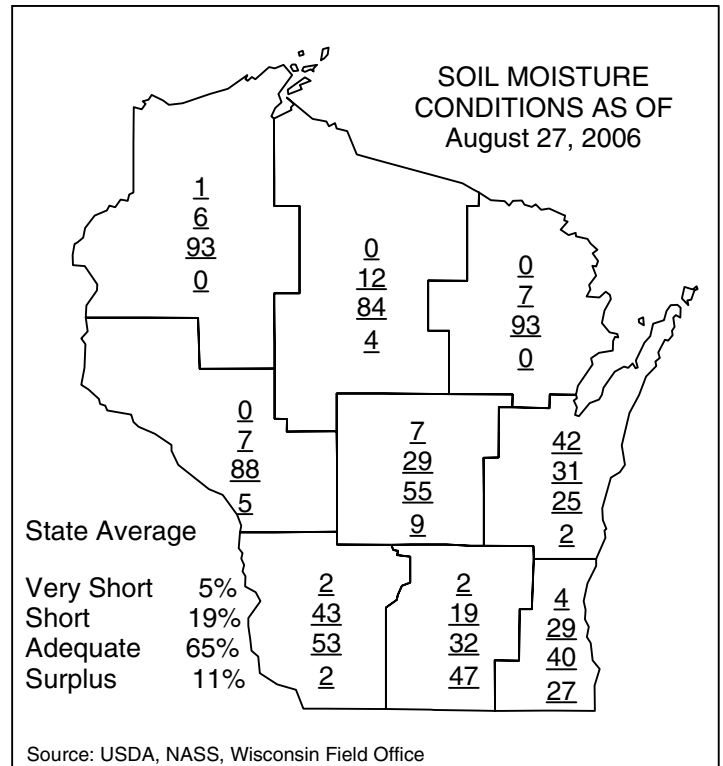
**Corn** in the dough stage was at 79 percent, well ahead of last year's 67 percent and the 5-year average of 57 percent, according to the Wisconsin Field Office of USDA's National Agricultural Statistics Service. Corn dent was at 33 percent, above last year's 24 percent and more than double the 5-year average of 14 percent. Corn silage harvested was at 2 percent, behind last year's 5 percent, but ahead of the 5-year average of 1 percent. Corn conditions were rated as 6 percent very poor, 9 percent poor, 28 percent fair, 41 percent good, and 16 percent excellent. Hail damage came to some fields in the western and southern parts of the state.

**Soybeans** setting pods was at 94 percent, just behind last year's 96 percent, but higher than the 5-year average of 88 percent. Soybean leaves turning color was at 8 percent, behind last year's 15 percent, but just above the 5-year average of 7 percent. Soybeans conditions were reported as 2 percent very poor, 6 percent poor, 26 percent fair, 50 percent good, and 16 percent excellent. Weeds have been appearing in some soybean fields and others suffered hail damage.

Third cutting **alfalfa** was at 75 percent complete, ahead of last year's 65 percent and the 5-year average of 59 percent. Fourth cutting alfalfa was at 7 percent complete, ahead of last year and the 5-year average of 0 percent. Many farmers reported favorable effects from the rain on alfalfa, as the third crop looks to be very strong.

**Pasture** conditions were rated as 5 percent very poor, 14 percent poor, 35 percent fair, 41 percent good, and 5 percent excellent.

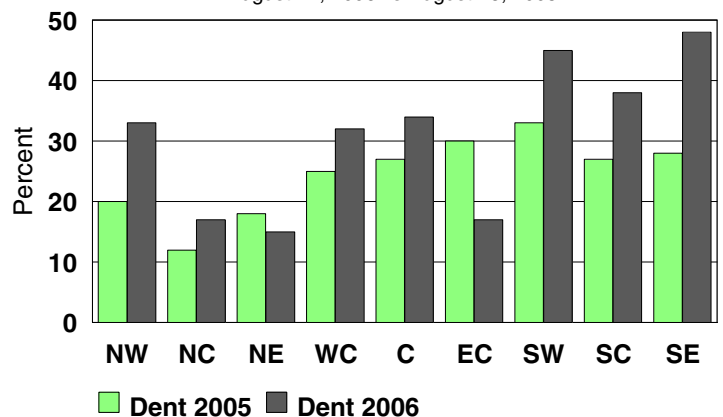
**Oats** harvested for grain was reported at 99 percent, below last year's 100 percent, but above the 5-year average of 94 percent. **Apples** continue to look well. Vegetable harvest, including **potatoes, snap beans, and sweet corn** is in full swing and looking good.



Item	V.-poor	Poor	Fair	Good	Excellent
Percent					
Corn	6	9	28	41	16
Soybeans	2	6	26	50	16
Pasture	5	14	35	41	5

## Corn in Dent Stage Wisconsin by District

August 27, 2006 vs August 28, 2005



Crop and percent of acreage	District average									State average		
	NW	NC	NE	WC	C	EC	SW	SC	SE	This year	Last year	5-year average
Corn dough	85	80	55	80	78	71	78	84	85	79	67	57
Corn dent	33	17	15	32	34	17	45	38	48	33	24	14
Corn harvested for silage	1	1	0	2	6	3	1	0	2	2	5	1
Soybeans setting pods	95	96	90	97	92	89	99	99	79	94	96	88
Soybeans turning color	5	14	6	6	4	18	16	4	8	8	15	7
Third cutting hay	62	81	74	87	70	64	79	96	64	75	65	59
Fourth cutting hay	4	4	12	13	3	4	6	13	0	7	0	0

**Quotes from Farm Reporters and County Ag Agents**

**BARRON-R.C.:** What a difference the rain made. After a long drought, farmers are harvesting a record third crop of hay with high quality. Spider mites have taken their toll on soybean fields that were not sprayed or sprayed too late. Judge is still out on corn, as many fields pollinated so unevenly that it is questionable if the entire field will mature.

**POLK-C.S.:** Corn and soybeans continue to mature. Soybeans, hayfields, and pastures have made a remarkable recovery. Corn injury was permanent and low yields will be the result. Apples are being picked, and garden vegetables are being collected and canned. Third and fourth crop alfalfa look excellent.

**CLARK-N.S.:** Corn is moving along into the dent stage. A noticeable number of soybean fields are now starting to turn yellow as maturity approaches. Many of the fields that have started to turn are in the .5 to 1.0 maturity range. Some great quality alfalfa, unfortunately, was rained on after it was cut.

**VILAS-L.K.:** Some first crop hay is still being made and has poor quality. Rains came too late for any second crop. Oats are all harvested; about 15 percent below normal. Much-needed rains are improving pastures, but too late for anything else. Still need long, soaking rains for ground water and ponds.

**SHAWANO-T.A.:** Strong crop year here. About the only downside to the season was drowned areas in the corn and some soybeans from spring rains. The field crops look good and established alfalfa outstanding. Some of the under-seeded alfalfa has annual weed challenges.

**DUNN-S.S.:** Rains this week have given most crops a real upside. Hayfields and pastures look much better. There was not much fieldwork this past week. Most farmers have a better outlook now after the rains. Corn and soybeans will be below average, but still better than they were three weeks ago.

**EAU CLAIRE-R.S.:** After a very poor second crop of hay, third crop is excellent with timely rains. Pastures have rebounded very well.

**TREMPEALEAU-J.Z.:** Heavy rain yesterday, up to 4.0 inches in parts of the county. Hail came down as well. Some corn and soybeans stripped of leaves and knocked down.

**WAUPACA-D.H.:** Corn and soybeans have improved since the rains came. Lots of third crop hay has been baled. Yields appear to be average. Some corn is almost ready for silage.

**WINNEBAGO-R.H.:** Corn and soybeans look very good. Some fields that are dry need rain real soon. Peas are all harvested with above average yields. Sweet corn yields are mostly very good, despite the dry condition of some areas.

**GRANT-L.F.:** Corn and soybeans look good. Yields will depend on the conditions and weather. Soybean pods are smaller, but are filled to the end of the pods. Oats are all harvested. Most third crop hay is made, fourth crop starting to be made; very nice hay.

**COLUMBIA-R.S.:** Weeds coming all over in soybeans. Hail destroyed some corn and soybean fields during the storms on Wednesday. Nothing going on in the fields. It will take a while to dry things out.

**ROCK-C.O.:** No rain has taken it's toll on crops on the lighter soils. Rain this week was too little, too late. Some corn fields have ears dropping already. Storms raised havoc with some fields, and it has been a difficult week to make hay.

**KENOSHA-J.H.:** Good soaking rain. Some minor storm damage. Very beneficial.



USDA, NASS, Wisconsin Field Office  
P.O. Box 8934  
Madison, WI 53708-8934  
(608) 224-4848  
<http://www.nass.usda.gov/wi/>

**Robert J. Battaglia**  
Director

**Max Lord**  
Statistician

This report has been made possible through the cooperative efforts of the U.S. Department of Agriculture, and the Wisconsin Department of Agriculture, Trade and Consumer Protection, and the National Weather Service.

**Wisconsin Weekly Weather, Selected Cities, Ending as of 7:00 a.m. on August 27, 2006**

City	Temperature						Growing degree days (modified base 50) 1/		Precipitation			
	Avg. max.	Avg. min.	High max.	Low min.	Avg.	Avg dep. from normal*	Mar. 1 to Aug. 26	Mar. 1 to Aug. 26 normal *	Last week	Since June 1	June 1 dep. from normal*	Year to date
Eau Claire	78	58	86	51	68	0	2517	2020	1.26	9.85	-2.16	19.09
Green Bay	77	57	83	50	67	1	2167	1881	0.76	8.90	-1.10	20.91
La Crosse	80	62	86	55	71	1	2633	2261	1.29	9.08	-2.71	21.77
Madison	79	59	84	53	69	1	2356	2198	3.12	11.15	-0.46	25.91
Milwaukee	79	64	83	58	72	3	2302	n.a.	0.71	9.82	-0.62	25.31

1/Formula used: GDD = (daily maximum (86°) + daily minimum (50°))/2-50°; where 86° is used if the maximum exceeds 86° and 50° is used if the minimum falls below 50°. \*Normal based on 1971-2000 data. Source: NCEP/NOAA Climate Prediction Center <<http://www.cpc.ncep.noaa.gov>>. N.a. = not available. T = trace.