



Wisconsin Crop Weather

Compiled by the Wisconsin Agricultural Statistics Service

May 21, 2001 - 3 p.m.

Vol. 01, No. 8

Full Speed Ahead!

Planting and tillage was in full gear last week, with farmers racing to finish before alfalfa harvest starts. Reports from northern Wisconsin noted that most fields were now dry, with planting continuing after several days of dry weather and warm temperatures. Central Wisconsin reported great progress, planting many acres of corn and soybeans. Southern Wisconsin reported both planting and harvesting activities last week. The warm weather has encouraged the weed populations this spring. Herbicide treatment timing could be difficult this year, with the delays already seen this spring. Favorable weather last week contributed to Wisconsin farmers averaging 5.2 days suitable for fieldwork. Soil moisture was 3% short, 76% adequate, and 21% surplus.

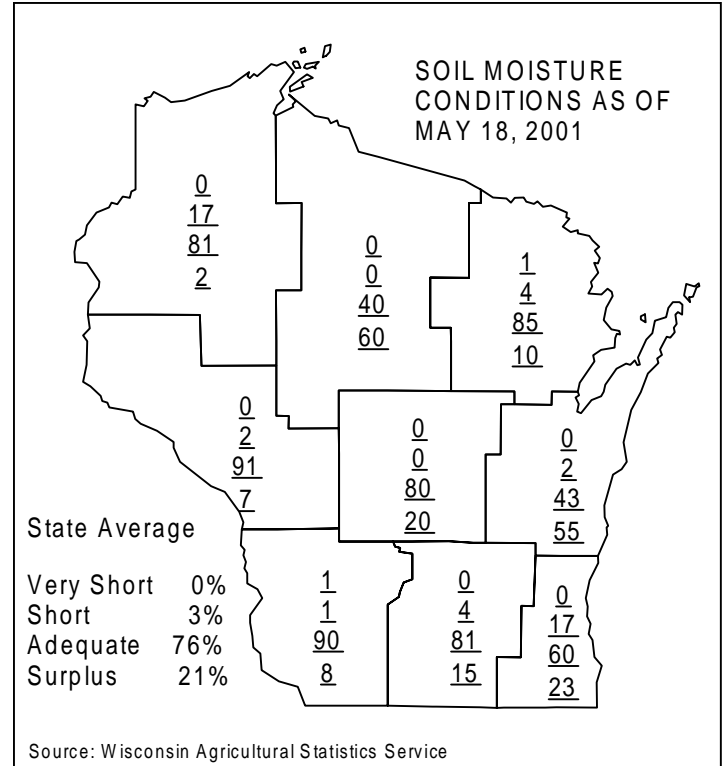
Corn planted reached 72%, behind last years 88%, and the 5-year average of 76%. Last week, corn rows became more visible with emergence reaching 34%, compared to last years 67%. Waupaca County reported corn standing 2 inches tall. **Soybean** planting continued last week, with the state average reaching 34% complete, behind last years 63%, yet close to the 5-year average of 41%. Soybean emergence reached 13% complete, behind last years 28%.

Winter wheat fields continue to be rated 90% good to excellent throughout the state. **Oat** acreage reached 91% planted last week, compared to 100% last year, and the 5-year average of 92%. Oat emergence was reported 64% last week, below last years 97%, and the 5-year average of 78%.

Alfalfa growth continued last week with the warm dry weather. Southern Wisconsin saw alfalfa harvest start last week. Central Wisconsin reported alfalfa looking good, with projections of good yields and harvest beginning soon. Many reporters stated that alfalfa harvest will soon have priority over planting, to preserve the forage quality.

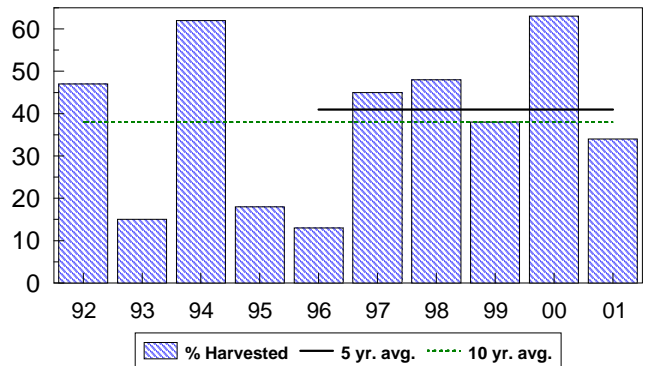
Potato acreage in Wood County is starting to emerge. **Blueberries** in central Wisconsin are in full bloom, with good insect activity on the flowers. **Cranberry** acreage was reported in the "cabbage head to roughneck" stage according to a Wood County reporter. **Strawberries** in Columbia County were reported blooming nicely, with **apple** trees just starting there.

Spring tillage averaged 83% complete last week, behind last years 99%, and the 5-year average of 87%. Wet spots in fields continue to slow the progress.



Progress of Soybeans Planted

May 20, 1992 - 2001
Wisconsin



Wisconsin Crop Conditions as of May 18, 2001					
Item	V.-poor	Poor	Fair	Good	Excellent
Percent					
Pasture	0	1	7	70	22
Corn	0	2	22	53	23
Oats	0	2	14	63	21
Winter Wheat	0	2	8	56	34

Wisconsin Crop Progress, May 20, 2001

Crop and percent of acreage	District average									State average		
	NW	NC	NE	WC	C	EC	SW	SC	SE	This year	Last year	5-year average
Oats planted	90	76	95	90	94	89	99	100	100	91	100	92
Oats emerged	40	45	48	59	65	59	82	95	95	64	97	78
Corn planted	61	54	75	72	71	63	77	79	83	72	88	76
Corn Emerged	10	9	9	28	32	24	44	49	55	34	67	n.a.
Soybeans Planted	18	28	20	16	21	24	47	34	61	34	63	41
Soybeans Emerged	0	8	4	0	3	7	26	10	36	13	28	n.a.
Spring tillage	70	73	78	78	85	77	97	88	94	83	99	87

Quotes from Farm Reporters and County Ag Agents

BURNETT-J.D.: Completed corn planting on Wednesday; soil moisture ideal. Hay, especially alfalfa, is great.

CHIPPEWA-T.P.: Tillage continues to happen at a rapid pace. Some light soils could use rain.

PRICE-F.J.: Corn planted and spraying completed on lighter soils. Hay crop looks excellent.

FLORENCE-K.B.: This week was good for spring tillage. Most of the corn is in. Fruit trees are just flowering.

SHAWANO-B.R.: Many hours spent on tractors this week, as a lot of planting was done, although some fields really weren't ready yet. Starting to see some corn rows in fields that were planted early. No sign of any soybean plants yet.

DUNN-J.M.: Tillage and planting are going full steam ahead. Alfalfa harvest will be starting the end of the month.

MONROE-W.D.: Many finishing oats, and went to corn. Some are getting ready to hay; the hay looks great.

PIERCE-C.T.: Some corn planted Sunday was peeking through on Friday. Lots of crops were put in this week. Gearing up for first crop hay.

MARQUETTE-K.V.: Several days of dry weather and 75-degree temperatures, with a good wind, have helped dry fields. Corn and soybean planting is proceeding rapidly. Soil is warm and moist, so germination and emergence are excellent. If we can get three more good days, most of the county will have the corn done and a big part of the soybeans planted. Oats and wheat look great.

WAUPACA-D.H.: Spring planting is going full tilt with the more favorable weather. Corn is being planted. Corn planted before the rains has emerged, and some is two inches tall. Oats looks good.

WAUSHARA-L.K.: Lots of corn being planted; the early corn is up. Most of the tillage has been completed. Hay will be ready to cut in a few days. Apple trees are done blossoming.

BROWN-C.F.: Corn is just starting to emerge with the first leaf showing. Alfalfa is progressing nicely. Some farmers getting hay equipment ready. There is still some land to be worked. Weeds are growing in full force.

FOND DU LAC-B.P.: Still too wet to work fields. Some early-planted corn is up. Lots of standing water. Winter wheat is yellowing, due to excess moisture.

MANITOWOC-S.H.: Still wet.

IOWA-S.M.: Planting corn is almost done. Soybean planting is well on its way to being finished. Alfalfa looks good.

LAFAYETTE-L.W.: Lots of excellent quality hay harvested this last week. Most was chopped or wrapped wet. A little was baled dry.

VERNON-K.A.: First seven-day stretch of good weather all spring.

DANE-D.R.: Rain conditions limit fieldwork. Eighty-degree temperatures will assist crop emergence and crop growth. Alfalfa is growing rapidly.

DODGE-M.E.: Heavy and pounding rain Monday has kept everyone out of the field.

JEFFERSON-R.W.: Dry weather in our area. Rainfall is needed. Hay is starting to be cut with excellent quality; quantity remains to be seen. Some corn and even some soybeans are up. Mosquitos are starting to be a pest.

RACINE-L.F.: Everything is looking great!

WALWORTH-A.A.: Corn is coming up fast. Beans, wheat, and hay look good. Anhydrous is being put on the corn that is up 5 inches or more.

WASHINGTON-L.K.: Corn that is planted is emerging quickly with the warmer weather. Rain on Monday kept us out of the field until Thursday. Corn is about 60 percent done. Weeds are growing fast, and need to spray on time.



Wisconsin Agricultural Statistics Service
P.O. Box 8934
Madison, WI 53708-8934
(608) 224-4848
<http://www.nass.usda.gov/wi/rfsetoc.htm>

Robert J. Battaglia
State Statistician

Angela Byers-Krantz
Statistician

This report has been made possible through the cooperative efforts of the U.S. Department of Agriculture, and the Wisconsin Department of Agriculture, Trade and Consumer Protection, and the National Weather Service.

Wisconsin Weekly Weather, Selected Cities, Ending as of 7:00 a.m. on May 20, 2001

City	Temperature						Growing degree days (modified base 50) 1/		Precipitation			
	Avg. max.	Avg. min.	High max.	Low min.	Avg.	Avg dep. from normal*	Mar. 1 to May 19	Mar. 1 to May 19 normal *	Last week	Since Mar. 1	Mar. 1 dep. from normal*	Year to date
Eau Claire	80	49	92	42	64	7	392	299	0.00	8.26	1.49	9.86
Green Bay	75	50	82	42	63	7	374	249	0.10	6.56	0.49	9.01
La Crosse	83	55	91	44	69	9	n.a.	n.a.	0.00	7.29	0.61	9.47
Madison	77	51	86	42	64	7	453	345	0.03	5.85	-1.03	9.48
Milwaukee	72	48	86	39	60	5	370	n.a.	1.13	6.99	-0.95	11.58

1/Formula used: GDD = (daily maximum (86°) + daily minimum (50°))/2-50°; where 86° is used if the maximum exceeds 86° and 50° is used if the minimum falls below 50°. *Normal based on 1961-90 data. Source: NCEP/NOAA Climate Prediction Center <<http://www.cpc.ncep.noaa.gov>>. N.a. = not available. T = trace.