



United States Department of Agriculture
National Agricultural Statistics Service
**South Carolina Crop Progress
and Condition Report**



Cooperating with the South Carolina Department of Agriculture
Southern Regional Field Office · 355 East Hancock Avenue, Suite 100 · Athens, GA 30601 · (800) 253-4419
www.nass.usda.gov

This report contains data collected each week from respondents across the state whose occupations provide them opportunities to discuss agricultural production with farmers in their counties as well as to make visual observations. We thank all who have contributed to this report.

August 15, 2022

Media Contact: Jacqueline Moore

General

According to the National Agricultural Statistics Service in South Carolina, there were 6.2 days suitable for fieldwork for the week ending Sunday, August 14, 2022.

Special Note: *At the time of publication, the 7-day observed precipitation and average temperature was unavailable.*

Crops

Early corn harvest began in some areas as fields reached maturity. Cotton continued setting bolls as some bolls began to open. Soybeans fields continued to bloom and set pods. Tobacco harvest progressed, although the lack of rainfall at the beginning of the crop year in the Pee Dee region has delayed some tobacco from being ready. Peas, tomatoes, peppers, and melons were all reported to be having good yields in the Pee Dee region. Pecans were reported to be in good condition in the Midlands region with growers having very little issue with scab. Planting of fall crops continued. Some caterpillar pressure in brassicas was reported in the Midlands region.

Livestock and Pastures

Cattle remained in mostly fair to good condition. Pasture conditions improved slightly, aided by occasional precipitation and more moderate temperatures throughout the week.

Crop Progress for Week Ending 08/14/22

Crop stage	Prev year	Prev week	This week	5 Year avg
	(percent)	(percent)	(percent)	(percent)
Corn - Mature	83	71	79	79
Corn - Harvested	4	3	6	10
Cotton - Setting Bolls	88	81	87	81
Cotton - Bolls Opening.....	0	1	2	2
Hay - 2nd Cutting.....	81	73	81	75
Peaches - Harvested	90	90	94	87
Peanuts - Pegging	98	93	97	95
Soybeans - Blooming.....	74	59	71	71
Soybeans - Setting Pods ...	31	27	35	32
Tobacco - Harvested	59	40	55	55

Conditions for Week Ending 08/14/22

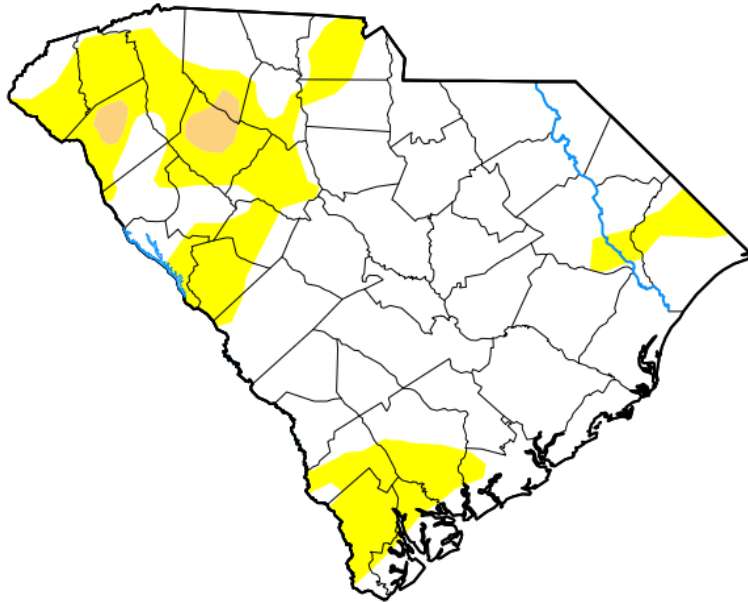
Crop	Very poor	Poor	Fair	Good	Excellent
	(percent)	(percent)	(percent)	(percent)	(percent)
Cattle	0	1	36	52	11
Corn	10	16	27	38	9
Cotton.....	1	1	32	51	15
Pasture and range	2	8	43	41	6
Peanuts	0	1	21	58	20
Soybeans	2	3	27	60	8
Tobacco.....	1	4	19	55	21

Soil Moisture for Week Ending 08/14/22

Topsoil	Previous week	This week
	(percent)	(percent)
Very short	9	2
Short.....	35	34
Adequate	55	64
Surplus	1	0
Subsoil	Previous week	This week
	(percent)	(percent)
Very short	1	1
Short.....	23	27
Adequate	76	72
Surplus	0	0

U.S. Drought Monitor South Carolina

August 9, 2022
(Released Thursday, Aug. 11, 2022)
Valid 8 a.m. EDT



Drought Conditions (Percent Area)

	None	D0-D4	D1-D4	D2-D4	D3-D4	D4
Current	75.44	24.56	1.48	0.00	0.00	0.00
Last Week <i>08-02-2022</i>	78.63	21.37	0.47	0.00	0.00	0.00
3 Months Ago <i>05-10-2022</i>	50.72	49.28	27.18	4.30	0.00	0.00
Start of Calendar Year <i>01-04-2022</i>	51.78	48.22	31.63	7.87	0.00	0.00
Start of Water Year <i>09-28-2021</i>	98.41	1.59	0.00	0.00	0.00	0.00
One Year Ago <i>08-10-2021</i>	99.86	0.14	0.00	0.00	0.00	0.00

Intensity:

- None
- D0 Abnormally Dry
- D1 Moderate Drought
- D2 Severe Drought
- D3 Extreme Drought
- D4 Exceptional Drought

The Drought Monitor focuses on broad-scale conditions. Local conditions may vary. For more information on the Drought Monitor, go to <https://droughtmonitor.unl.edu/About.aspx>

Author:

Richard Tinker
CPC/NOAA/NWS/NCEP



droughtmonitor.unl.edu