



South Carolina Crop Progress and Condition Report



Cooperating with the South Carolina Department of Agriculture
Southern Region, South Carolina Field Office · 208G Wholesale Lane · West Columbia, SC 29172 · (803) 734-2506
www.nass.usda.gov

This report contains data collected each week from respondents across the state whose occupations provide them opportunities to discuss agricultural production with farmers in their counties as well as to make visual observations. We thank all who have contributed to this report.

August 24, 2020

Media Contact: Eddie Wells

General

According to the National Agricultural Statistics Service in South Carolina, there were 5.2 days suitable for fieldwork for the week ending Sunday, August 23, 2020. Precipitation ranged from 0.1 inches of rain to 4.4 inches. Average high temperatures ranged from the low 80s to the low 90s. Average low temperatures ranged from the mid 60s to the mid 70s.

Crops

High humidity, cloudy skies, and showers delayed corn harvesting, crop spraying, and hay harvesting, but at the same time, kept crops from heat stress. In the Pee Dee region, thunderstorms caused ponding in fields. Due to wet field conditions, some cotton insecticides were applied by air.

Both fruit and vegetable development slowed slightly from cloudy conditions. The recent rain led to an increase of bacterial spot on fall tomatoes. Fall greens and brassicas were planted as the weather allowed. Some producers reported that caterpillars are already present on fall brassicas.

Livestock and Pastures

Cattle and pasture condition remained mostly good.

Crop Progress for Week Ending 08/23/20

Crop stage	Prev year	Prev week	This week	5 Year avg
	(percent)	(percent)	(percent)	(percent)
Corn - Mature	91	80	89	93
Corn - Harvested	38	15	37	38
Cotton - Squaring	100	90	93	99
Cotton - Setting Bolls.....	98	75	83	93
Cotton - Bolls Opening	20	0	2	11
Hay - 2nd Cutting	81	90	94	83
Soybeans - Blooming	84	68	81	85
Soybeans - Setting Pods ..	38	37	47	45
Tobacco - Harvested	77	62	68	66

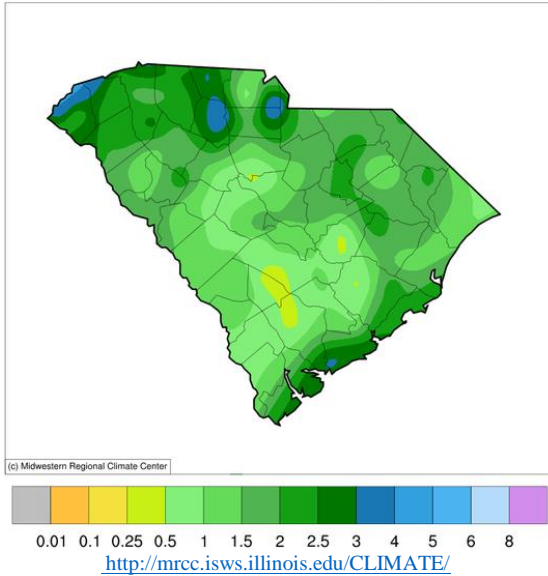
Conditions for Week Ending 08/23/20

Crop	Very poor	Poor	Fair	Good	Excellent
	(percent)	(percent)	(percent)	(percent)	(percent)
Cattle	0	5	21	69	5
Corn	4	6	17	52	21
Cotton	7	9	16	51	17
Pasture and range..	0	8	29	58	5
Peanuts.....	3	3	19	57	18
Soybeans	6	4	9	51	30

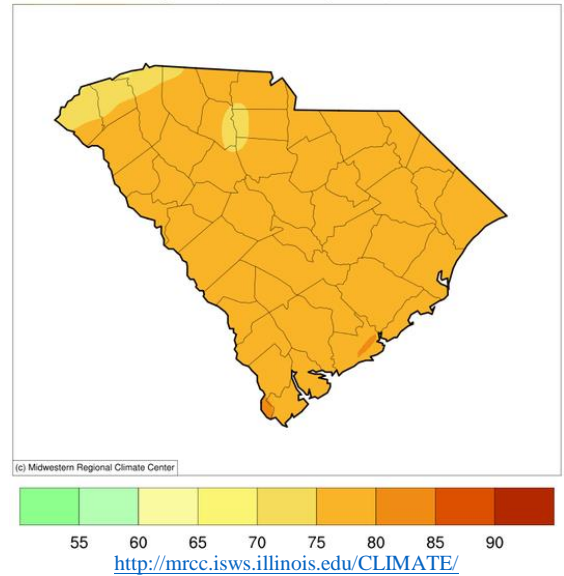
Soil Moisture for Week Ending 08/23/20

Topsoil	Previous week	This week
	(percent)	(percent)
Very short.....	2	1
Short	17	7
Adequate.....	68	75
Surplus.....	13	17
Subsoil	Previous week	This week
	(percent)	(percent)
Very short.....	0	0
Short	15	6
Adequate.....	76	83
Surplus.....	9	11

Accumulated Precipitation (in)
August 17, 2020 to August 23, 2020



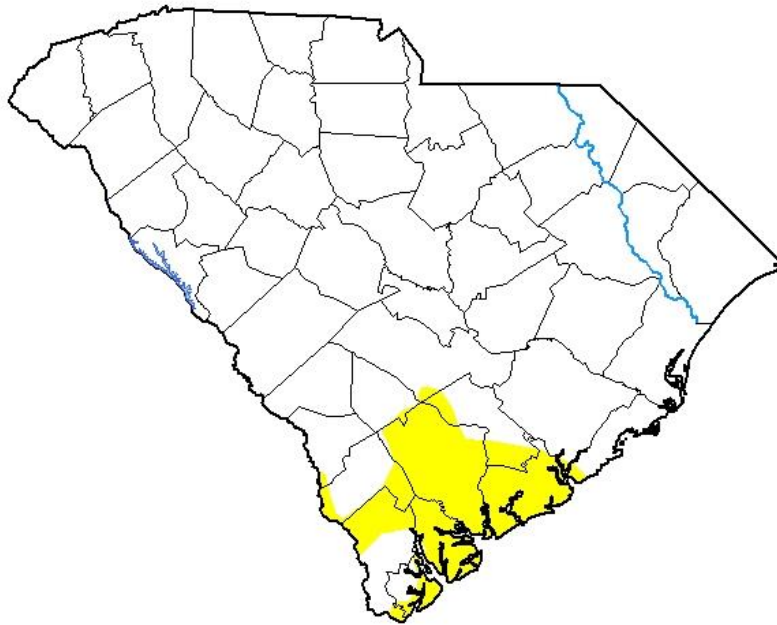
Average Temperature (°F)
August 17, 2020 to August 23, 2020



For the state's complete Weekly Weather Summary http://www.dnr.sc.gov/climate/sco/ClimateData/cli_reports_2020.php

U.S. Drought Monitor South Carolina

August 18, 2020
(Released Thursday, Aug. 20, 2020)
Valid 8 a.m. EDT



Drought Conditions (Percent Area)

	None	D0-D4	D1-D4	D2-D4	D3-D4	D4
Current	90.75	9.25	0.00	0.00	0.00	0.00
Last Week 08-11-2020	95.48	4.52	0.00	0.00	0.00	0.00
3 Months Ago 05-19-2020	100.00	0.00	0.00	0.00	0.00	0.00
Start of Calendar Year 12-31-2019	100.00	0.00	0.00	0.00	0.00	0.00
Start of Water Year 10-01-2019	22.06	77.94	48.67	20.47	1.77	0.00
One Year Ago 08-20-2019	11.03	88.97	15.00	0.65	0.00	0.00

Intensity:

- None
- D0 Abnormally Dry
- D1 Moderate Drought
- D2 Severe Drought
- D3 Extreme Drought
- D4 Exceptional Drought

The Drought Monitor focuses on broad-scale conditions. Local conditions may vary. For more information on the Drought Monitor, go to <https://droughtmonitor.unl.edu/About.aspx>

Author:

David Simeral
Western Regional Climate Center



droughtmonitor.unl.edu