

NORTH DAKOTA CROP, LIVESTOCK, & WEATHER REPORT



USDA, NASS
North Dakota
Field Office

Cooperating With:
NDSU EXTENSION SERVICE,
FARM SERVICE AGENCY,
ND AG WEATHER NETWORK (NDAWN)
and
UND AEROSPACE REGIONAL WEATHER
INFORMATION CENTER

Released: November 14, 2011
For Week Ending: November 13, 2011
ND-CW4611

General: Another week of favorable weather conditions allowed growers across the state to finish the 2011 crop year harvest, according to the National Agricultural Statistics Service, North Dakota Field Office. Topsoil moisture supplies were rated 1 percent very short, 28 short, 67 adequate, and 4 surplus while subsoil moisture supplies were rated 14 percent short, 77 adequate, and 9 surplus. Statewide, on average, there were 6.5 days suitable for fieldwork.

Crops: Sunflower harvest was essentially completed by week's end as 96 percent of the sunflower crop had been harvested. Other activities included fall tillage and fertilizer applications.

Livestock: Stockwater supplies were rated 3 percent short, 91 adequate, and 6 surplus. Pasture and range conditions were rated 1 percent very poor, 13 poor, 25 fair, 53 good, and 8 excellent. Other activities during the week included vaccinating and moving cattle from summer pastures, and hauling hay.

This is the last weekly Crop, Livestock and Weather report for the 2011 season. The monthly reports will be available January 3, January 30, February 27, and March 26. The weekly report will resume in April 2012.

These reports are made possible by the dedicated efforts of the North Dakota County Extension Agents, Farm Service Agency County Directors, NDSU Department of Soil Science (NDAWN) and UND Aerospace Regional Weather Information Center. We extend our thanks to these people who have provided the information which has allowed you to have an accurate picture of North Dakota agriculture.

Darin D. Jantzi

Darin Jantzi, Director

**Pasture Condition
North Dakota: November 13, 2011**

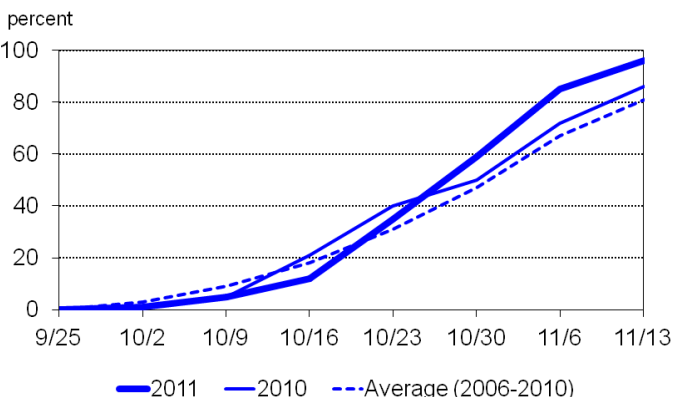
Crop	Very poor	Poor	Fair	Good	Excellent
	(percent)	(percent)	(percent)	(percent)	(percent)
Pasture and range	1	13	25	53	8

Crop Progress – North Dakota

(Percentages represent all acreage in or beyond each stage. Progress is based on current intended acreage.)

Crop	Nov 13, 2011	Nov 6, 2011	Nov 13, 2010	2006-2010 Average
	(percent)	(percent)	(percent)	(percent)
Sunflower				
Harvested.....	96	85	86	81

Sunflower Harvested – North Dakota



~ Compiled and Published by ~

OFFICIAL BUSINESS
 Penalty for Private Use, \$300

ADDRESS SERVICE REQUESTED

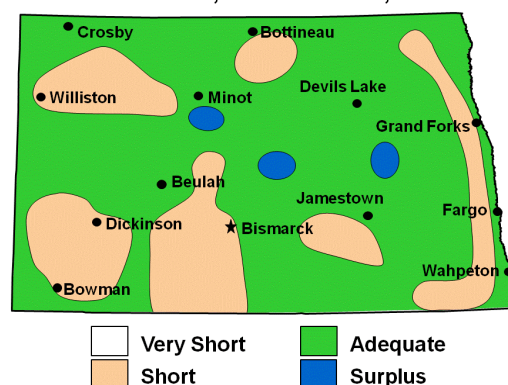
NORTH DAKOTA CROP WEATHER REPORT, Week Ending November 13, 2011

Soil Moisture Supplies – North Dakota

Item	Nov 13, 2011	Nov 6, 2011	Nov 13, 2010
	(percent)	(percent)	(percent)
Topsoil			
Very Short ..	1	1	-
Short	28	25	10
Adequate...	67	69	77
Surplus	4	5	13
Subsoil			
Very Short ..	-	-	-
Short	14	12	8
Adequate...	77	77	79
Surplus	9	11	13

- Represents zero.

**Topsoil Moisture Supplies
 North Dakota, November 13, 2011**



Weather: Temperatures were above normal statewide. Precipitation was below normal across much of the state. Highs on Monday were in the mid-30s to mid-40s with dry conditions. Tuesday was dry with highs in the 40s to mid-50s. Highs on Wednesday were in the mid-30s to mid-40s. Thursday was dry with highs in the upper 30s to mid-50s. Highs on Friday were in the 50s to low 60s with dry conditions. Saturday was dry with highs in the mid-40s to 50s. Highs on Sunday were in the upper 30s to low 50s with dry conditions.

Outlook, November 14–20: Temperatures will be near normal in the west and above normal in the east. Precipitation will be above normal across much of the state. Highs on Monday will be in the mid-30s to mid-40s with a chance of rain or snow showers in the west and central. There will be a chance of snow showers in the central and east on Tuesday with highs in the upper 20s to mid-30s. Highs on Wednesday will be in the upper 20s to mid-30s with a chance of snow showers in the northeast. There will be a chance of snow in the northwest and north central on Thursday with highs in the mid-30s to mid-40s. Highs on Friday will be in the mid-20s to mid-40s with a chance of snow in the northern half of the state. There will be a chance of snow across the state on Saturday and Sunday with highs in the upper 10s to mid-30s.

**Temperature and Precipitation – Districts and Stations
 North Dakota: Week ending November 13, 2011**

District averages	Average temperature		Seasonal precipitation beginning April 1 ¹		
	Past week	Depart normal ²	Past week	Total	Depart normal ²
	(degrees F)	(degrees F)	(inches)	(inches)	(inches)
Northwest (1)	34	6			
N. Central (2)	32	5			
Northeast (3)	33	4			
W. Central (4)	35	4			
Central (5)	36	6	NOT AVAILABLE		
E. Central (6)	37	8			
Southwest (7)	34	3			
S. Central (8)	37	6			
Southeast (9)	38	8			

¹ Precipitation amounts may vary due to an inaccurate snowfall melt.
² Normal is the 1971-2000 average. Weather data collected from NDAWN stations and compiled by UND Aerospace Regional Weather Information Center.

**Temperature and Precipitation – Districts and Stations
 North Dakota: Week ending November 13, 2011**

Stations by District	Temperature past week		Seasonal precipitation beginning April 1 ¹		
	High	Low	Past week	Total	Depart normal ²
	(degrees F)	(degrees F)	(inches)	(inches)	(inches)
(1) Bowbells	49	17			
Williston.....	54	17			
Mohall	49	20			
Minot.....	50	20			
(2) Baker	50	17			
Bottineau.....	49	13			
Rugby	52	16			
(3) Cando.....	51	15			
Cavalier.....	52	13			
Forest River ...	51	15			
Grand Forks ...	55	16			
Langdon.....	46	17			
St. Thomas.....	52	15			NOT AVAILABLE
(4) Hazen	58	11			
Turtle Lake.....	54	16			
Watford City ...	56	16			
(5) Carrington.....	54	18			
Harvey	54	18			
Jamestown.....	54	21			
Robinson.....	54	19			
Streeter	55	19			
(6) Dazey	55	19			
Fargo	55	22			
Hillsboro.....	57	19			
(7) Beach	58	12			
Bowman.....	58	11			
Dickinson	58	12			
Hettinger	59	11			
(8) Mandan	58	15			
Linton.....	58	17			
(9) Edgeley	56	22			
Oakes	59	17			
Wyndmere.....	58	20			

¹ Precipitation amounts may vary due to an inaccurate snowfall melt.
² Normal is the 1971-2000 average. Weather data collected from NDAWN stations and compiled by UND Aerospace Regional Weather Information Center.