

NORTH DAKOTA CROP, LIVESTOCK, & WEATHER REPORT



USDA, NASS
North Dakota
Field Office

Cooperating With:
NDSU EXTENSION SERVICE,
FARM SERVICE AGENCY,
ND AG WEATHER NETWORK (NDAWN)
and
UND AEROSPACE REGIONAL WEATHER
INFORMATION CENTER

Released: October 31, 2011
For Week Ending: October 30, 2011
ND-CW4411

General: Scattered rainstorms caused some delays, but overall had little effect on harvest activities, according to the National Agricultural Statistics Service, North Dakota Field Office. Topsoil moisture supplies were rated 1 percent very short, 22 short, 71 adequate, and 6 surplus while subsoil moisture supplies were rated 11 percent short, 78 adequate, and 11 surplus. Statewide, on average, there were 6.0 days suitable for fieldwork.

Crops: Soybean growers essentially finished their harvest this week, while corn and sunflower harvest continued to advance toward completion. Ninety-eight percent of soybeans were harvested. Eighty-eight percent of the corn crop had been harvested for grain. Corn for silage was 95 percent chopped. Fifty-nine percent of sunflowers had been harvested.

Livestock: Stockwater supplies were rated 2 percent short, 89 adequate, and 9 surplus. Pasture and range conditions were rated 1 percent very poor, 10 poor, 29 fair, 47 good, and 13 excellent. Other activities during the week included vaccinating and weaning cattle, fall tillage and fertilizer application.



Crop and Pasture Condition North Dakota: October 30, 2011

| Crop | Very poor | Poor | Fair | Good | Excellent |
|----------------------|-----------|-----------|-----------|-----------|-----------|
| | (percent) | (percent) | (percent) | (percent) | (percent) |
| Sunflower..... | - | 8 | 21 | 63 | 8 |
| Pasture and range .. | 1 | 10 | 29 | 47 | 13 |

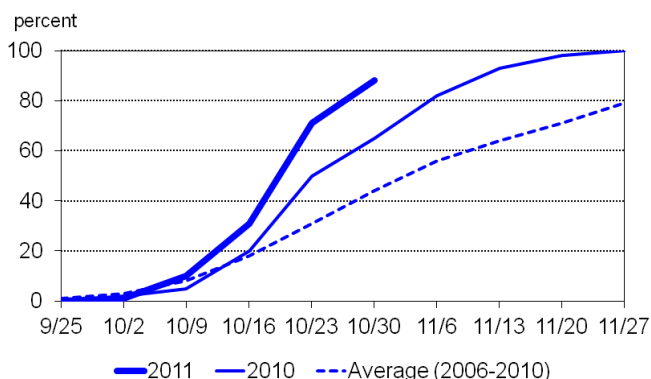
- Represents zero.

Crop Progress – North Dakota

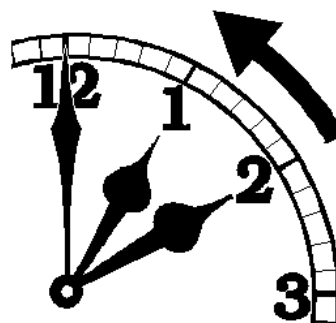
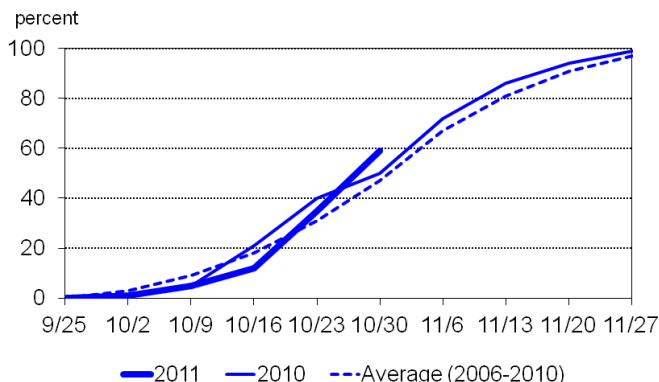
(Percentages represent all acreage in or beyond each stage. Progress is based on current intended acreage.)

| Crop | Oct 30, 2011 | Oct 23, 2011 | Oct 30, 2010 | 2006-2010 Average |
|------------------------|--------------|--------------|--------------|-------------------|
| | (percent) | (percent) | (percent) | (percent) |
| Corn, all | | | | |
| Harvested..... | 88 | 71 | 65 | 44 |
| Corn for Silage | | | | |
| Chopped | 95 | 93 | 100 | 98 |
| Soybeans | | | | |
| Harvested..... | 98 | 93 | 100 | 82 |
| Sunflower | | | | |
| Harvested..... | 59 | 35 | 50 | 47 |

Corn for Grain Harvested – North Dakota



Sunflower Harvested – North Dakota



~ Compiled and Published by ~

OFFICIAL BUSINESS
 Penalty for Private Use, \$300

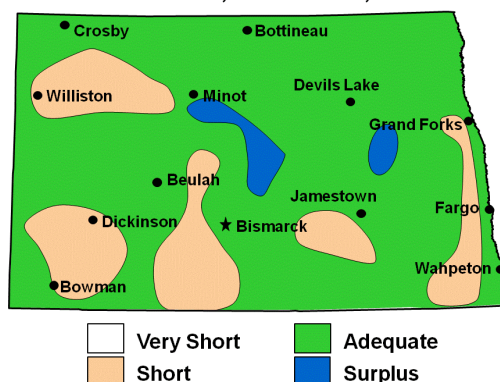
ADDRESS SERVICE REQUESTED

Soil Moisture Supplies – North Dakota

| Item | Oct 30, 2011 | Oct 23, 2011 | Oct 30, 2010 | 2006-2010 Average |
|----------------|--------------|--------------|--------------|-------------------|
| | (percent) | (percent) | (percent) | (percent) |
| Topsoil | | | | |
| Very Short.. | 1 | 1 | - | 5 |
| Short | 22 | 20 | 11 | 20 |
| Adequate... | 71 | 72 | 77 | 65 |
| Surplus..... | 6 | 7 | 12 | 10 |
| Subsoil | | | | |
| Very Short.. | - | - | - | 12 |
| Short | 11 | 11 | 8 | 22 |
| Adequate... | 78 | 78 | 80 | 57 |
| Surplus..... | 11 | 11 | 12 | 9 |

- Represents zero.

**Topsoil Moisture Supplies
 North Dakota, October 30, 2011**



Weather: Temperatures were above normal in parts of the north and near normal elsewhere. Precipitation was above normal in parts of the northwest and north central and below normal across the rest of the state. Highs on Monday were in the mid-40s to 50s with showers in the west and central. There were showers across much of the state on Tuesday with more steady rain across the north. Highs were in the 40s to mid-50s on Tuesday. There were a few showers in the central and east on Wednesday with highs in the mid-40s to mid-50s. Thursday was dry with highs in the upper 40s to mid-50s. Highs on Friday were in the mid-40s to mid-50s with dry conditions. There were a few showers across the state on Saturday with highs in the upper 40s to low 60s. Sunday was dry with highs in the 40s to mid-50s.

Outlook, Oct. 31-Nov. 6: Temperatures will be near normal across much of the state. Precipitation will be near to above normal. The best chance for above normal precipitation will be in the southern and eastern part of the state. Monday will be dry with highs in the 50s to low 60s. Highs on Tuesday will be in the 40s to low 50s with a few rain or snow showers in the west and a few rain showers in the south. Wednesday and Thursday will be dry with highs in the 40s. Highs on Friday will be in the upper 30s to 40s with dry conditions. There will be a chance of snow in the west, rain or snow in the central, and rain in the east on Saturday with highs in the 30s to low 40s. There will be a chance of snow in the central and east on Sunday with highs in the 30s.

**Temperature & Precipitation: Districts and Stations
 North Dakota, Week ending October 30, 2011**

| District Averages | Average Temperature | | Seasonal Precipitation Beginning April 1 ¹ | | |
|-------------------|---------------------|----------------------------|---|----------|----------------------------|
| | Past Week | Depart Normal ² | Past Week | Total | Depart Normal ² |
| | (degrees F) | (degrees F) | (inches) | (inches) | (inches) |
| Northwest(1) | 40 | 3 | 0.41 | 17.36 | 3.52 |
| N. Central(2) | 37 | 1 | 0.30 | 16.00 | 0.78 |
| Northeast (3) | 37 | 0 | 0.12 | 16.03 | 0.88 |
| W. Central(4) | 39 | 0 | 0.19 | 17.47 | 3.53 |
| Central (5) | 37 | -1 | 0.21 | 18.47 | 3.53 |
| E. Central(6) | 37 | 0 | 0.03 | 18.15 | 1.03 |
| Southwest(7) | 39 | 0 | 0.06 | 15.78 | 2.54 |
| S. Central(8) | 39 | 0 | 0.15 | 18.29 | 4.02 |
| Southeast(9) | 38 | -1 | 0.08 | 18.55 | 1.71 |

¹ Precipitation amounts may vary due to an inaccurate snowfall melt.
² Normal is the 1971-2000 average. Weather data collected from NDAWN stations and compiled by UND Aerospace Regional Weather Information Center.

**Temperature & Precipitation: Districts and Stations
 North Dakota, Week ending October 30, 2011**

| Stations by District | Temperature past week | | Seasonal precipitation beginning April 1 ¹ | | |
|----------------------|-----------------------|-------------|---|----------|----------------------------|
| | High | Low | Past week | Total | Depart normal ² |
| | (degrees F) | (degrees F) | (inches) | (inches) | (inches) |
| (1) Bowbells..... | 53 | 29 | 0.69 | 17.69 | 3.22 |
| Williston..... | 53 | 26 | 0.12 | 14.87 | 3.56 |
| Mohall..... | 51 | 28 | 0.40 | 17.76 | 2.96 |
| Minot..... | 52 | 30 | 0.43 | 19.11 | 4.34 |
| (2) Baker..... | 51 | 25 | 0.41 | 17.88 | 3.14 |
| Bottineau..... | 52 | 23 | 0.27 | 14.44 | -1.13 |
| Rugby..... | 52 | 24 | 0.21 | 15.67 | 0.33 |
| (3) Cando..... | 53 | 26 | 0.62 | 16.99 | 3.40 |
| Cavalier..... | 53 | 20 | 0.00 | 16.99 | 1.25 |
| Forest River.... | 54 | 20 | 0.01 | 16.14 | 1.00 |
| Grand Forks.... | 54 | 19 | 0.00 | 15.91 | 0.28 |
| Langdon..... | 51 | 22 | 0.05 | 12.98 | -2.67 |
| St. Thomas..... | 52 | 21 | 0.01 | 17.17 | 2.03 |
| (4) Hazen..... | 58 | 20 | 0.35 | 19.22 | 5.12 |
| Turtle Lake..... | 51 | 26 | 0.11 | 14.30 | -0.15 |
| Watford City.... | 54 | 27 | 0.10 | 18.88 | 5.63 |
| (5) Carrington..... | 49 | 25 | 0.43 | 21.12 | 4.14 |
| Harvey..... | 50 | 25 | 0.22 | 14.36 | 1.30 |
| Jamestown..... | 51 | 24 | 0.07 | 19.22 | 3.86 |
| Robinson..... | 49 | 25 | 0.19 | 17.57 | 3.11 |
| Streeter..... | 50 | 24 | 0.15 | 20.07 | 5.24 |
| (6) Dazey..... | 50 | 21 | 0.08 | 18.11 | 1.18 |
| Fargo..... | 55 | 26 | 0.01 | 17.85 | 0.78 |
| Hillsboro..... | 55 | 20 | 0.01 | 18.50 | 1.12 |
| (7) Beach..... | 56 | 21 | 0.01 | 15.06 | 2.36 |
| Bowman..... | 57 | 19 | 0.05 | 19.16 | 6.34 |
| Dickinson..... | 58 | 22 | 0.03 | 14.49 | 0.51 |
| Hettinger..... | 60 | 23 | 0.13 | 14.42 | 0.94 |
| (8) Mandan..... | 57 | 23 | 0.13 | 19.82 | 5.06 |
| Linton..... | 54 | 25 | 0.16 | 16.76 | 2.99 |
| (9) Edgeley..... | 52 | 26 | 0.05 | 18.55 | 2.40 |
| Oakes..... | 53 | 22 | 0.09 | 17.63 | 1.33 |
| Wyndmere..... | 53 | 23 | 0.09 | 19.46 | 1.41 |

¹ Precipitation amounts may vary due to an inaccurate snowfall melt.
² Normal is the 1971-2000 average. Weather data collected from NDAWN stations and compiled by UND Aerospace Regional Weather Information Center.