

# NORTH DAKOTA CROP, LIVESTOCK & WEATHER REPORT



Cooperating With:  
NDSU EXTENSION SERVICE,  
FARM SERVICE AGENCY,  
ND AG WEATHER NETWORK (NDAWN)  
and  
UND AEROSPACE REGIONAL WEATHER  
INFORMATION CENTER

Released: November 5, 2007  
For Week Ending: November 4, 2007  
ND-CW4507

**General:** Producers harvested more than a quarter of the corn and sunflower crops during this past week, according to the USDA, National Agricultural Statistics Service, North Dakota Field Office. Fall fieldwork and fertilizer application progressed while reporters noted that farmers had increased soil tests this year due to a rise in fertilizer costs. Topsoil moisture supplies were rated 14 percent very short, 37 short, 48 adequate and 1 surplus. This compares with the five-year (2002-2006) average of 10 percent very short, 28 short, 57 adequate and 5 surplus. Subsoil moisture supplies were rated 85 percent short to adequate, compared with last year and average of 74 and 78 percent, respectively. Statewide, on average, there were 6.5 days suitable for fieldwork.

**Crops:** Row crop harvest made excellent progress across the state. Sunflower harvest made the most progress during the week, advancing 28 percentage points to 78 percent complete. Corn for grain was 80 percent complete, compared with 91 percent last year and 72 percent on average. Dry edible bean and soybean harvest were virtually complete by week's end, at 99 and 98 percent respectively, both finished ahead of the average pace.

**Livestock:** Producers main activities were moving cattle to graze on corn stalks while other calves were sold. Stockwater supplies were rated 6 percent very short, 22 short, 69 adequate and 3 surplus. This compares to last year when stockwater supplies were rated 11 percent very short, 30 short, 57 adequate and 2 surplus.

## Crops Harvested: Percent Completed, by District North Dakota, Week Ending November 4, 2007

Crop	NW	NC	NE	WC	C	EC	SW	SC	SE
--- Percent ---									
Dry Edible Beans	100	99	100	95	100	100	NA	NA	100
Soybeans	100	100	98	NA	94	100	NA	96	99

NA = Not Available.

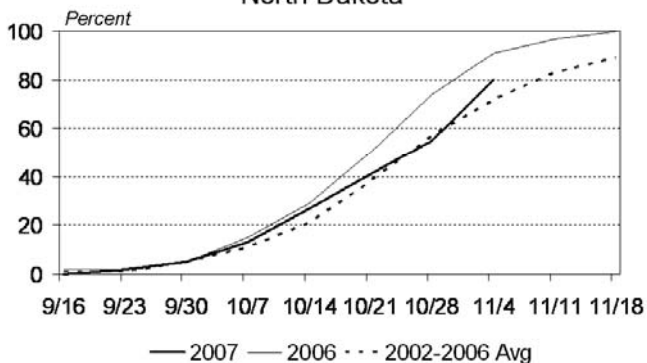
## Crop Development Progress North Dakota, Week Ending November 4, 2007 <sup>1/2/</sup>

Crop	Week Ending			2002-2006 Avg
	Nov 4, 2007	Oct 28, 2007	Nov 4, 2006	
	Percent	Percent	Percent	Percent
CORN				
Harvested for Grain	80	55	91	72
DRY EDIBLE BEANS				
Harvested	99	95	100	97
SOYBEANS				
Harvested	98	93	99	96
SUNFLOWERS				
Harvested	78	50	88	70

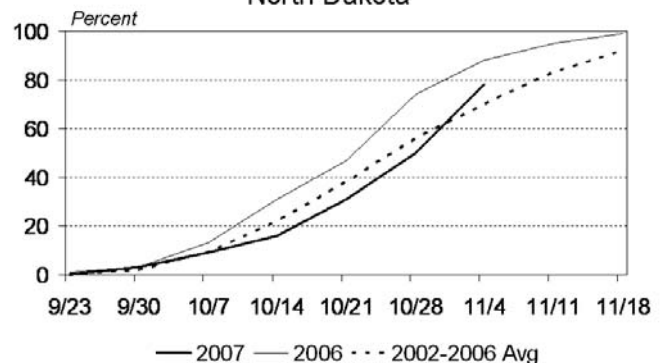
<sup>1/</sup> Crop development percents represent all acreage in or beyond each stage.  
<sup>2/</sup> Progress is based on current intended acreage. NA = Not Available



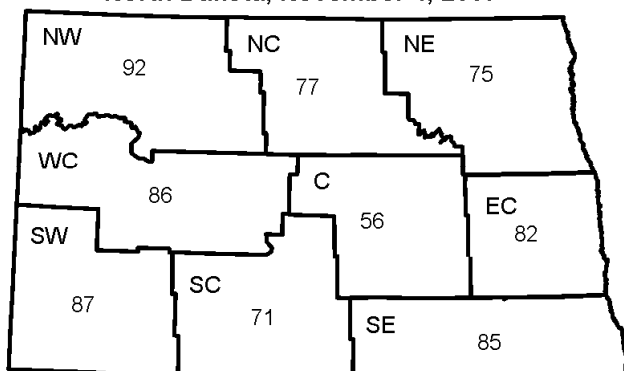
Corn for Grain: Harvested  
North Dakota



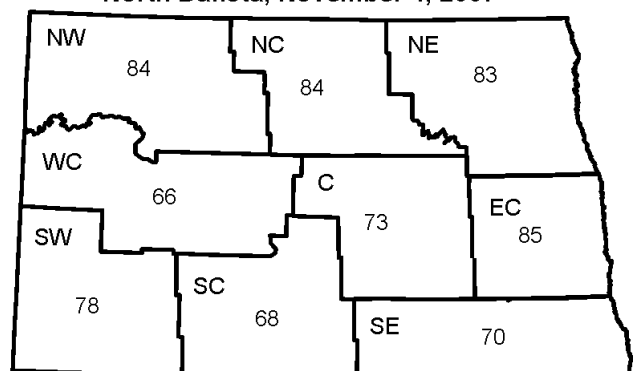
Sunflowers: Harvested  
North Dakota



Corn for Grain: Percent Harvested  
North Dakota, November 4, 2007



Sunflowers: Percent Harvested  
North Dakota, November 4, 2007



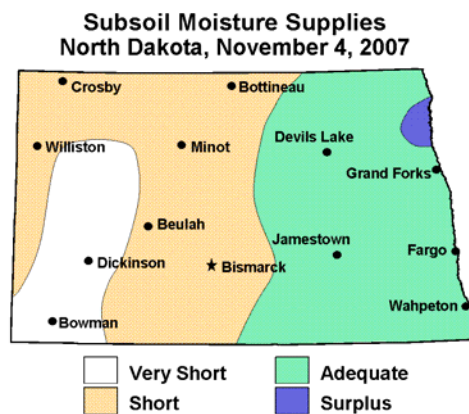
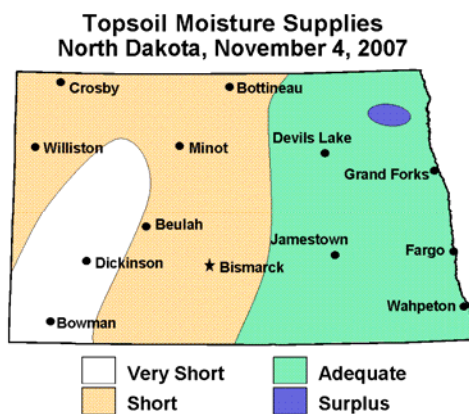
~ Compiled and Published by ~

OFFICIAL BUSINESS  
 Penalty for Private Use, \$300

ADDRESS SERVICE REQUESTED

**Soil Moisture Supplies  
 North Dakota, November 4, 2007**

Date	Week Ending			2002-2006 Avg
	Nov 4, 2007	Oct 28, 2007	Nov 4, 2006	
	Percent	Percent	Percent	Percent
<b>Topsoil</b>				
Very Short	14	12	5	10
Short	37	32	33	28
Adequate	48	55	61	57
Surplus	1	1	1	5
<b>Subsoil</b>				
Very Short	14	13	25	19
Short	39	36	35	29
Adequate	46	50	39	49
Surplus	1	1	1	3



**Weather:** This week was warm with above average temperatures for most of the week. Monday started off the week warm and dry with highs in the 60s to mid-70s. On Tuesday, scattered showers mainly moved through the central and southern regions of the state with highs in the 50s to 60s. Wednesday dried out but cooled down to highs in the upper 40s to mid-50s. Thursday warmed back up to the mid-50s to lower 60s with a few isolated showers in the western part of the state. Friday and Saturday stayed dry as highs cooled back down to the upper 40s to mid-50s. On Sunday, scattered showers moved through the eastern half of the state with highs in the lower 40s to mid-60s with the lower temperatures occurring where precipitation fell.

**Outlook, November 5-11:** Monday will start off the week with some isolated light snow showers with highs in the 30s to lower 40s. Tuesday will dry out with highs in the 30s to low 40s. Wednesday warms up but continues to stay dry with highs in the 40s to mid-50s. Thursday and Friday continues the dry trend with highs in the upper 30s to low 50s. On Saturday, there is a chance of scattered showers in the day and a rain snow mix at night, especially in the eastern half of the state with highs in the 40s to low 50s. Sunday brings a chance of precipitation statewide due to a scattered rain snow mix with highs in the 40s.

**Temperature & Precipitation: Districts and Stations  
 North Dakota, Week ending November 4, 2007**

District Averages	Average Temperature		Seasonal Precipitation Beginning April 1 <sup>1/</sup>		
	Past Week	Depart Normal <sup>2/</sup>	Past Week	Total	Depart Normal <sup>2/</sup>
	(Degrees F)	(Degrees F)	(Inches)	(Inches)	(Inches)
Northwest(1)	46	12	0.00	11.33	-2.64
N. Central(2)	43	10	0.01	14.62	-0.76
Northeast (3)	44	10	0.03	20.55	5.23
W. Central(4)	47	11	0.00	11.26	-2.82
Central (5)	47	11	0.01	17.28	2.18
E. Central(6)	45	9	0.03	18.74	1.39
Southwest(7)	46	10	0.00	12.79	-0.60
S. Central(8)	48	12	0.01	17.52	3.10
Southeast(9)	47	10	0.00	20.50	3.46

<sup>1/</sup> Precipitation amounts may vary due to an inaccurate snowfall melt. <sup>2/</sup> Normal is the 1971-2000 average. NA=Not available. Weather data collected from NDAWN stations and compiled by UND Aerospace Regional Weather Information Center.

**Temperature & Precipitation: Districts and Stations  
 North Dakota, Week ending November 4, 2007**

Stations by District	Temperature Past Week		Seasonal Precipitation Beginning April 1 <sup>1/</sup>		
	High	Low	Past Week	Total	Depart Normal <sup>2/</sup>
	(Degrees F)	(Degrees F)	(Inches)	(Inches)	(Inches)
(1) Bowbells	68	25	0.00	11.39	-3.18
Williston	69	26	0.00	10.90	-0.55
Mohall	70	21	0.00	10.86	-4.09
Minot	69	26	0.00	12.18	-2.74
(2) Baker	69	23	0.00	18.15	3.21
Bottineau	69	13	0.01	11.88	-3.84
Rugby	69	20	0.01	13.83	-1.66
(3) Cando	67	19	0.00	17.52	3.78
Cavalier	66	24	0.00	22.25	6.34
Forest River	66	26	0.03	20.03	4.69
Grand Forks	67	25	0.06	18.13	2.30
Langdon	64	20	0.01	17.63	1.83
St. Thomas	66	26	0.09	27.80	12.46
(4) Hazen	74	21	0.00	11.27	-2.98
Turtle Lake	71	24	0.00	13.01	-1.59
Watford City	71	24	0.00	9.51	-3.89
(5) Carrington	72	24	0.02	17.15	-0.04
Harvey	71	23	0.00	13.78	0.56
Jamestown	72	26	0.00	19.82	4.31
Robinson	71	19	0.00	14.11	-0.50
Streeter	72	23	0.01	21.55	6.57
(6) Dazey	68	24	0.02	18.28	1.15
Fargo	65	27	0.03	20.20	2.88
Hillsboro	64	22	0.03	17.75	0.15
(7) Beach	70	23	0.00	12.19	-0.66
Bowman	73	15	0.00	13.17	0.20
Dickinson	72	22	0.00	9.87	-4.26
Hettinger	75	21	0.00	15.95	2.32
(8) Mandan	73	24	0.01	18.87	3.96
Linton	71	24	0.00	16.16	2.24
(9) Edgeley	70	27	0.00	16.38	0.06
Oakes	70	22	0.00	23.27	6.77
Wydmore	70	24	0.00	21.86	3.56

<sup>1/</sup> Precipitation amounts may vary due to an inaccurate snowfall melt. <sup>2/</sup> Normal is the 1971-2000 average. NA=Not Available. Weather data collected from NDAWN stations and compiled by UND Aerospace Regional Weather Information Center.