

# North Carolina Crop Progress & Condition Report

Released: April 22, 2024



## CROP SUMMARY FOR THE WEEK ENDING APRIL 21, 2024

*Crop information in this report is provided voluntarily by county officials of the Cooperative Extension Service, FSA, NRCS, and other knowledgeable individuals.*

### DAYS SUITABLE FOR FIELD WORK

This Week	Last Week	Last Year
6.3	5.5	5.2

### SOIL MOISTURE PERCENT

	VS	ST	A	SS
Subsoil Moisture	1	8	87	4
Topsoil Moisture	1	12	83	4

VS= Very Short ST = Short A = Adequate SS = Surplus

### CROP PROGRESS PERCENT – WITH COMPARISONS

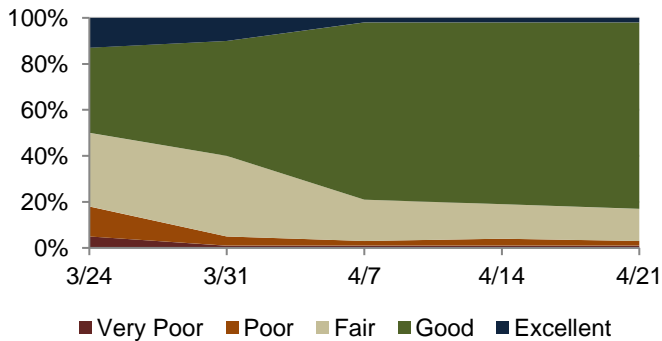
	This Week	Last Week	Last Year	5Yr Avg
<b>PLANTED:</b>				
Corn	51	27	45	45
Tobacco Flue-Cured	16	n/a	20	12
<b>PHENOLOGICAL:</b>				
Barley Headed	61	41	54	47
Corn Emerged	26	n/a	21	20
Winter Wheat Headed	41	18	50	31
<b>HARVESTED:</b>				
Hay: First Cutting	12	n/a	n/a	n/a

### CROP CONDITION PERCENT

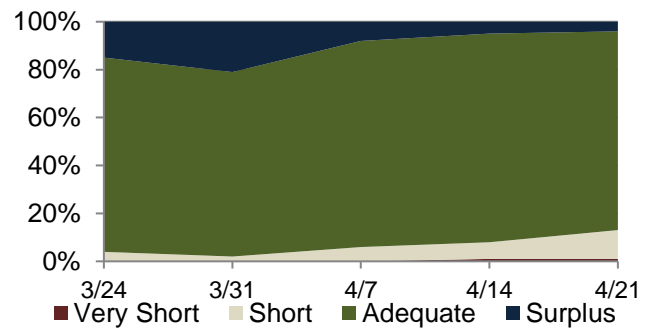
	VP	P	F	G	EX
Barley	1	2	14	81	2
Oats	0	0	30	66	4
Pasture	1	1	17	79	2
Winter Wheat	0	2	18	74	6

VP = Very Poor P = Poor F = Fair G = Good EX = Excellent

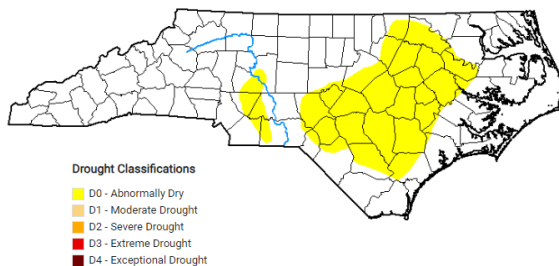
### BARLEY CONDITION



### TOPSOIL MOISTURE PERCENT

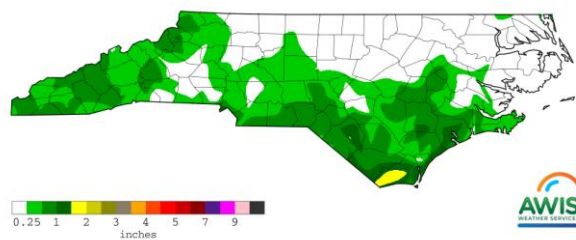


Map depicts current drought conditions as of April 16, 2024.



The US Drought Monitor focuses on broad scale conditions. Information provided for North Carolina is relative to information provided from all other states and the North Carolina Drought Management Advisory Council. Local conditions may vary. <http://www.ncdrought.org/>

### Precipitation for 04/15/2024 to 04/21/2024



Map depicts accumulations through dates listed. This product is made possible by AWIS Weather Services, Inc. <http://www.awis.com/>

**WEATHER SUMMARY FOR THE WEEK ENDING APRIL 21, 2024 <sup>1</sup>**

Location	Precipitation (Inches)				Temperature (Degrees F.)				
	This Week		Year to Date		This Week				
	Total	Departure from Normal	Total	Departure from Normal	High	Low	Avg.	Departure from Normal	Degree Days (YTD)
Asheboro	0.31	-0.41	13.72	-0.23	86	46	68	8	472
Asheville_Munic	0.47	-0.3	17.68	2.65	84	43	65	10	360
Boone	1.09	0.02	19.79	3.03	78	42	61	13	176
Burlington AP	0.03	-0.67	13.91	0.68	88	45	67	8	464
Charlotte	0.37	-0.26	14.66	0.54	89	52	72	11	617
Clayton WTP	0.01	-0.69	10.37	-3.48	88	50	68	9	557
Clinton_2NE	0.61	-0.16	10.04	-4.29	86	44	68	7	631
Elizabeth City 1.8 SE	0.11	-0.52	15.78	1.26	87	52	66	6	492
Elizabethtown_NC	0.66	0.03	10.57	-3.04	88	52	71	10	724
Erwin_AP	0.37	-0.33	11.17	-3.22	90	48	69	10	584
Fayetteville_AP	0.63	0	9.41	-4.33	89	50	71	10	720
Frisco	0.09	-0.61	18.3	1.12	79	54	66	6	533
Gastonia-Gaston	0.2	-0.43	15.85	0.99	87	46	69	9	516
Goldsboro_AFB	0.84	0.07	9.85	-5.29	90	49	70	7	696
Greensboro_AP	0.35	-0.42	14.82	1.86	86	48	68	10	461
Greenville Airport	0.3	-0.47	11.24	-3.01	88	52	68	7	600
Hickory	0.13	-0.71	15.34	-0.42	89	49	69	10	467
Jacksonville_AP	1.33	0.63	13	-1.37	87	50	70	8	681
Jacksonville_EOC	1.33	0.58	15.14	0.14	87	50	70	8	656
Jefferson_2E	0.6	-0.31	18.46	4.37	78	41	60	11	182
Kinston Airport	0.39	-0.31	10.79	-3.8	90	48	69	7	630
Louisburg	0	-0.7	12.5	-1.31	86	48	66	9	441
Mt_Airy_2W	0.08	-0.76	16.28	2.71	86	46	64	10	308
New_Bern	0.48	-0.29	12.54	-3.02	89	52	70	8	691
North_Wilkesboro	0.18	-0.69	19.81	4.66	87	46	67	11	395
Oxford_NC	0.09	-0.57	13.51	0.18	84	48	64	7	329
Raleigh	0	-0.63	13.35	-0.21	89	50	70	10	612
Red Springs 3.8 NW	0.77	0.14	12	-2.46	88	47	70	8	582
Reidsville_2NW	0.1	-0.6	14.95	1.69	87	48	67	9	457
Roanoke_Rap_Dam	0	-0.74	13.81	0.15	88	43	65	7	431
Robbinsville_AG	0.39	-0.79	19.26	-3.34	88	41	64	9	304
Rockingham	0.55	-0.08	12.26	-1.89	88	50	71	10	620
Roxboro Airport	0.1	-0.55	13.51	0.43	84	43	64	7	334
Southern_Pines	0.75	0.12	10.77	-3.54	89	50	70	9	600
Statesville_2NNE	0.18	-0.49	15.74	1.9	87	38	65	6	361
Tarboro_1S	0.18	-0.52	10.56	-3.6	88	44	66	9	541
Vale_Ag_2SW	0.1	-0.65	17.07	2.66	90	44	67	8	409
Wadesboro_AP	0.52	-0.04	13.3	-1.39	88	46	69	8	536
Washington	0.29	-0.45	11.13	-2.66	88	52	68	8	588
Waynesville_1E	0.54	-0.23	16.79	0.57	84	40	63	11	246
Whiteville_7NW	0.7	0.04	10.79	-3.38	88	52	71	9	694
Williamston_1E	0.09	-0.64	11.02	-2.92	88	53	68	8	598
Wilmington_AP_NC	0.21	-0.43	10.98	-3.53	89	52	72	9	807
Winston-Salem	0.11	-0.66	16.39	3.43	87	49	69	10	505

<sup>1</sup> This data is made possible by AWIS Weather Services, Inc. <http://www.awis.com/> ...