

North Carolina Crop Progress & Condition Report

Released: May 2, 2022



CROP SUMMARY FOR THE WEEK ENDING MAY 1, 2022

Crop information in this report is provided voluntarily by county officials of the Cooperative Extension Service, FSA, NRCS, and other knowledgeable individuals.

DAYS SUITABLE FOR FIELD WORK

This Week	Last Week	Last Year
6.7	5.1	6.4

SOIL MOISTURE PERCENT

	VS	ST	A	SS
Subsoil Moisture	6	23	70	1
Topsoil Moisture	6	27	66	1

VS= Very Short ST = Short A = Adequate SS = Surplus

CROP PROGRESS PERCENT – WITH COMPARISONS

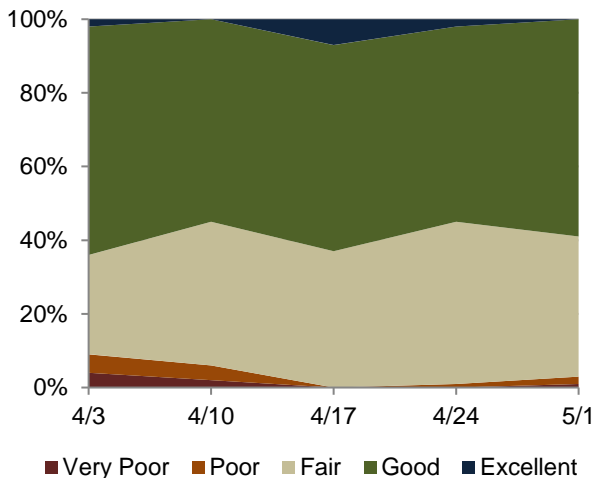
	This Week	Last Week	Last Year	5Yr Avg
PLANTED:				
Corn	80	60	77	72
Cotton	11	n/a	n/a	n/a
Soybeans	16	n/a	18	10
Tobacco Flue-Cured	36	13	45	38
PHENOLOGICAL:				
Barley Headed	82	38	70	60
Corn Emerged	56	32	57	49
Winter Wheat Headed	75	48	56	64
HARVESTED:				
Hay: First Cutting	13	n/a	11	n/a

CROP CONDITION PERCENT

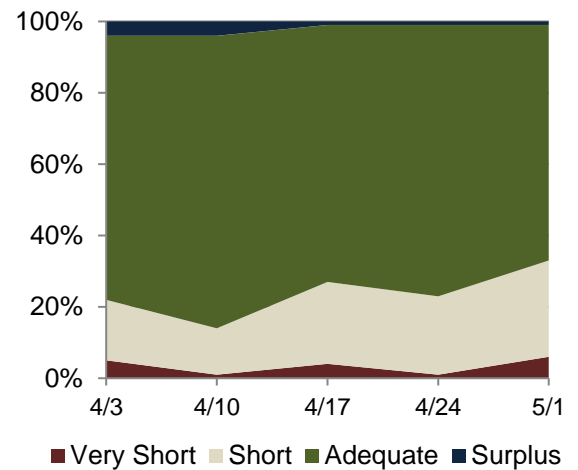
	VP	P	F	G	EX
Barley	0	2	14	81	3
Corn	1	1	9	74	15
Oats	1	2	38	59	0
Pasture	0	13	43	42	2
Strawberries	0	0	14	77	9
Winter Wheat	0	2	18	68	12

VP = Very Poor P = Poor F = Fair G = Good EX = Excellent

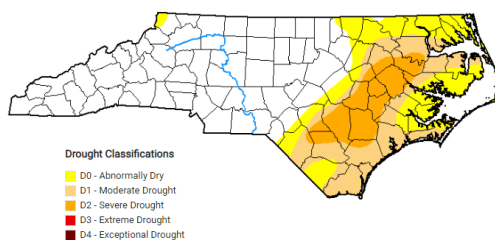
OATS CONDITION



TOPSOIL MOISTURE PERCENT

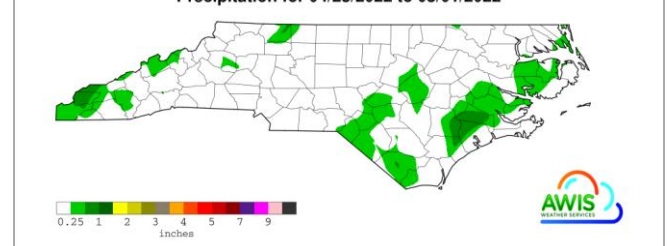


Map depicts current drought conditions as of April 26, 2022.



The US Drought Monitor focuses on broad scale conditions. Information provided for North Carolina is relative to information provided from all other states and the North Carolina Drought Management Advisory Council. Local conditions may vary. <http://www.ncdrought.org/>

Precipitation for 04/25/2022 to 05/01/2022



Map depicts accumulations through dates listed. This product is made possible by AWIS Weather Services, Inc. <http://www.awis.com/>

WEATHER SUMMARY FOR THE WEEK ENDING MAY 1, 2022 ¹

Location	Precipitation (Inches)				Temperature (Degrees F.)				
	This Week		Year to Date		This Week				
	Total	Departure from Normal	Total	Departure from Normal	High	Low	Avg.	Departure from Normal	Degree Days (YTD)
Asheboro Airport	0.14	-0.67	14.8	-0.15	84	42	63	1	540
Asheville Municipal AP	0.28	-0.57	17.32	1.24	80	39	60	3	314
Boone	0.08	-1	16.56	-1.57	79	39	57	6	175
Burlington AP	0.08	-0.73	15.86	1.62	87	40	62	0	503
Charlotte	0	-0.72	16.19	1.22	84	41	66	2	687
Clayton WTP	0.39	-0.4	16.35	1.54	88	48	66	3	778
Clinton_2NE	0.09	-0.79	11.32	-4.09	86	44	65	1	728
Elizabeth City	0.18	-0.59	15.79	0.33	87	38	63	1	645
Elizabethtown_NC	0.03	-0.69	8.88	-5.59	89	47	67	3	867
Erwin_AP	0.21	-0.53	13.03	-2.25	86	44	64	2	702
Fayetteville_AP	0.21	-0.49	9.22	-5.35	89	44	66	3	805
Frisco	0.02	-0.74	14.39	-3.7	79	40	63	0	900
Gastonia-Gaston	0	-0.72	16.52	0.82	83	43	64	2	561
Goldsboro_AFB	0.21	-0.56	12.26	-3.84	88	40	65	0	760
Greensboro_AP	0	-0.84	14.89	0.85	84	44	63	2	502
Greenville Airport	0.22	-0.6	12.51	-2.76	88	37	63	0	704
Hickory	0.03	-0.83	16.05	-0.78	82	43	64	3	501
Jacksonville_AP	0.05	-0.68	11.05	-4.22	83	44	64	-1	804
Jacksonville_EOC	0.26	-0.47	13.12	-2.15	85	39	64	-1	761
Jefferson_2E	0.03	-0.94	14.96	-0.35	82	38	55	3	152
Kinston Airport	0.23	-0.52	12.1	-3.4	88	39	64	-1	742
Louisburg	0.11	-0.71	13.22	-1.59	86	40	61	1	519
Maxton	0.13	-0.52	11.73	-3.5	89	44	67	3	820
Mt_Airy_2W	0.19	-0.74	16.97	2.21	84	42	60	2	324
New_Bern	0.26	-0.55	12.48	-4.08	93	43	65	1	804
North_Wilkesboro	0.04	-0.87	15.21	-1.09	85	41	62	4	420
Oxford_AP	0.09	-0.67	13.36	-0.89	84	39	59	-1	404
Raleigh	0.11	-0.6	16.44	2.03	88	45	65	3	691
Reidsville_2NW	0	-0.81	15.66	1.39	85	44	62	2	488
Roanoke_Rap_Dam	0.24	-0.6	16.77	2.08	86	40	61	1	494
Robbinsville_AG	0.53	-0.6	21.15	-2.84	83	37	60	3	320
Rockingham	0.22	-0.51	15.6	0.6	87	44	66	3	736
Roxboro Airport	0.18	-0.56	14.04	0.05	82	37	60	0	404
Southern_Pines	0.1	-0.61	13.56	-1.62	87	43	65	2	683
Statesville_2NNE	0.04	-0.73	14.84	0.08	83	38	62	0	420
Tarboro_1S	0.07	-0.68	10.74	-4.33	87	42	63	2	601
Vale_Ag_2SW	0.15	-0.7	19.62	4.18	85	39	62	0	425
Wadesboro Airport	0.05	-0.62	13.95	-1.51	84	40	64	0	619
Washington	0.46	-0.41	10.98	-3.88	86	40	64	0	715
Waynesville_1E	0.19	-0.67	20.31	3.06	80	32	59	4	264
Whiteville_7NW	0.21	-0.58	9.23	-5.88	89	44	66	1	823
Williamston_1E	0.06	-0.78	11.73	-3.25	88	41	64	2	709
Wilmington_AP_NC	0.1	-0.66	11.21	-4.22	86	48	67	1	922
Winston-Salem	0	-0.84	15.87	1.83	84	42	64	3	562

¹ This data is made possible by AWIS Weather Services, Inc. <http://www.awis.com/> ...