



# Nevada Crop Progress & Condition

Pacific Regional Office · 650 Capitol Mall, Suite 6-100 · Sacramento, CA 95814 · (916) 738-6600 · [www.nass.usda.gov/nv](http://www.nass.usda.gov/nv)

Week Ending November 26, 2023

Released November 27, 2023

## Weather Summary

No data was available at the time of publication.

## Crops Summary

Days Suitable for Fieldwork: 6.3 days. Topsoil Moisture: 5% very short, 15% short, 75% adequate, and 5% surplus. Subsoil Moisture: 5% very short, 15% short, 75% adequate, and 5% surplus. Pasture and Range Condition: 10% poor, 20% fair, 65% good, and 5% excellent. Low temperatures remained around freezing and there were scattered rains throughout the week. The irrigation district cut off water deliveries and all crops have been harvested for the season.

### Weather for the Week of 11/20/2023 through 11/26/2023 <sup>1</sup>

Station	Temperature				Precipitation <sup>3</sup>
	High	Low	Average	Departure from Normal <sup>2</sup>	
	-- Degrees Fahrenheit --				
Reno	N/A	N/A	N/A	N/A	N/A
Elko	N/A	N/A	N/A	N/A	N/A
Ely	N/A	N/A	N/A	N/A	N/A
Winnemucca	N/A	N/A	N/A	N/A	N/A
Eureka	N/A	N/A	N/A	N/A	N/A
Tonopah	N/A	N/A	N/A	N/A	N/A
Las Vegas	N/A	N/A	N/A	N/A	N/A

(NA) Not available

<sup>1</sup> No data was available at the time of publication.

<sup>2</sup> Normal periods 1990-2020 used in departure from normal calculations.

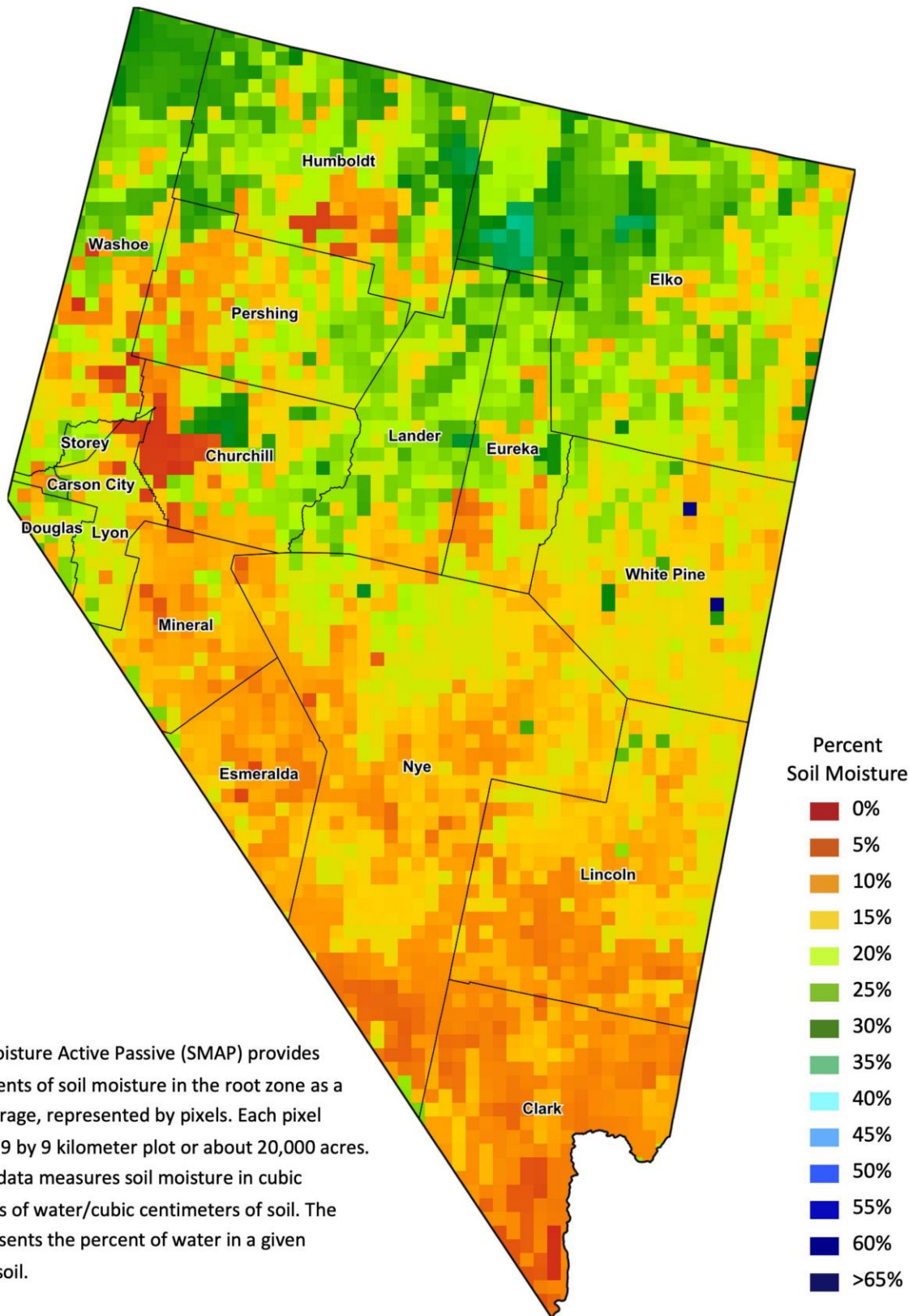
<sup>3</sup> Rain or melted snow/ice.

Data retrieved from NOAA and NWS. Calculated by USDA NASS. All rights reserved.

### Drought Conditions from the U.S. Drought Monitor as of 11/21/2023

Time	Percent of Land in Drought Rating						Drought Severity (DSCI)
	None	D0	D1	D2	D3	D4	
Current	94.40	4.00	1.60	0.00	0.00	0.00	7
Last Week	94.40	4.00	1.60	0.00	0.00	0.00	7
3 Months Ago	94.33	2.40	3.27	0.00	0.00	0.00	9
One Year Ago	0.00	0.00	0.49	56.14	43.37	0.00	343

The U.S. Drought Monitor is jointly produced by the National Drought Mitigation Center at the University of Nebraska-Lincoln, the United States Department of Agriculture, and the National Oceanic and Atmospheric Administration.  
[droughtmonitor.unl.edu/CurrentMap/StateDroughtMonitor.aspx?NV](http://droughtmonitor.unl.edu/CurrentMap/StateDroughtMonitor.aspx?NV)



The Soil Moisture Active Passive (SMAP) provides measurements of soil moisture in the root zone as a weekly average, represented by pixels. Each pixel represents 9 by 9 kilometer plot or about 20,000 acres. The SMAP data measures soil moisture in cubic centimeters of water/cubic centimeters of soil. The scale represents the percent of water in a given volume of soil.