



# Nevada Crop Progress & Condition

Pacific Regional Office · 650 Capitol Mall, Suite 6-100 · Sacramento, CA 95814 · (916) 738-6600 · [www.nass.usda.gov/nv](http://www.nass.usda.gov/nv)

Week Ending November 5, 2023

Released November 6, 2023

## Weather Summary

The average low temperatures for Nevada ranged from 5 degrees in Ely to 46 degrees in Las Vegas. The average high temperatures ranged from 67 degrees in Elko to 77 degrees in Las Vegas. Precipitation for the state was only observed in Elko with 0.01 inches.

## Crops Summary

Days Suitable for Fieldwork: 7.0 days. Topsoil Moisture: 15% very short, 15% short, 65% adequate, and 5% surplus. Subsoil Moisture: 5% very short, 20% short, and 75% adequate. Pasture and Range Condition: 20% poor, 35% fair, 40% good, and 5% excellent. The weather has been predictably dry across the state. The last cutting of **alfalfa** is ongoing. Water for irrigation was still available in central Nevada.

## Weather for the Week of 10/30/2023 through 11/5/2023

Station	Temperature				Precipitation <sup>2</sup>
	High	Low	Average	Departure from Normal <sup>1</sup>	
	-- Degrees Fahrenheit --				
Reno	75	24	53	4	0.00
Elko	67	13	45	4	0.01
Ely	69	5	43	3	0.00
Winnemucca	73	11	44	1	0.00
Eureka	69	11	41	0	0.00
Tonopah	70	23	47	0	0.00
Las Vegas	77	46	62	-1	0.00

(NA) Not available

<sup>1</sup> Normal periods 1990-2020 used in departure from normal calculations.

<sup>2</sup> Rain or melted snow/ice.

Data retrieved from NOAA and NWS. Calculated by USDA NASS. All rights reserved.

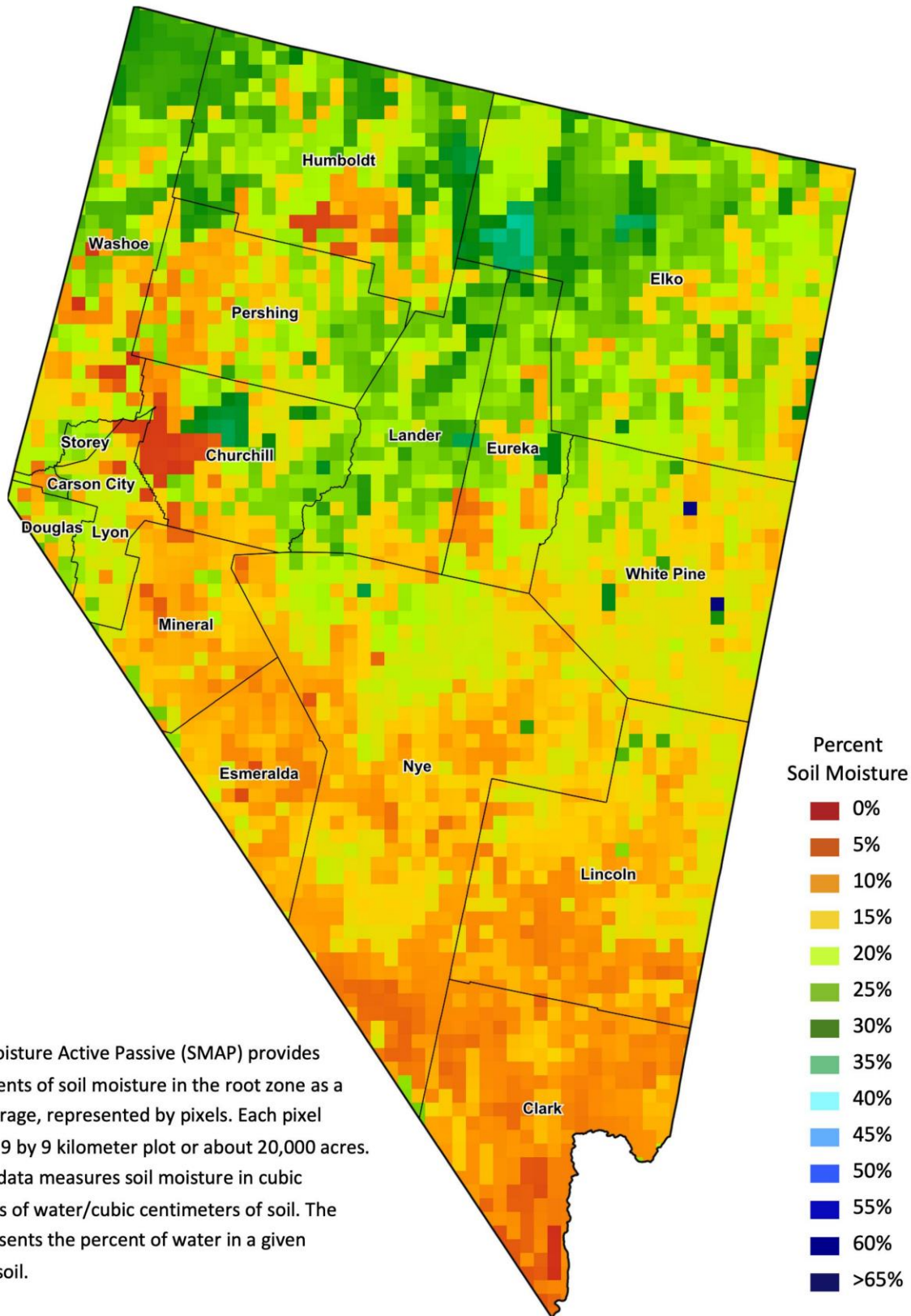
## Drought Conditions from the U.S. Drought Monitor as of 10/31/2023

Time	Percent of Land in Drought Rating						Drought Severity (DSCI)
	None	D0	D1	D2	D3	D4	
Current	94.39	4.01	1.60	0.00	0.00	0.00	7
Last Week	94.27	4.12	1.60	0.00	0.00	0.00	7
3 Months Ago	78.06	7.83	14.11	0.00	0.00	0.00	36
One Year Ago	0.00	0.00	0.48	54.91	44.61	0.00	344

The U.S. Drought Monitor is jointly produced by the National Drought Mitigation Center at the University of Nebraska-Lincoln, the United States Department of Agriculture, and the National Oceanic and Atmospheric Administration.  
[droughtmonitor.unl.edu/CurrentMap/StateDroughtMonitor.aspx?NV](http://droughtmonitor.unl.edu/CurrentMap/StateDroughtMonitor.aspx?NV)



# Nevada Soil Moisture Map for the Week of October 23 - 29, 2023



The Soil Moisture Active Passive (SMAP) provides measurements of soil moisture in the root zone as a weekly average, represented by pixels. Each pixel represents 9 by 9 kilometer plot or about 20,000 acres. The SMAP data measures soil moisture in cubic centimeters of water/cubic centimeters of soil. The scale represents the percent of water in a given volume of soil.