



Nevada Crop Progress & Condition

Pacific Regional Office · 650 Capitol Mall, Suite 6-100 · Sacramento, CA 95814 · (916) 738-6600 · www.nass.usda.gov/nv

Week Ending October 15, 2023

Released October 16, 2023

Weather Summary

The average low temperatures for Nevada ranged from 20 degrees in Ely to 55 degrees in Las Vegas. The average high temperatures ranged from 76 degrees in Eureka to 93 degrees in Las Vegas. Precipitation for Nevada ranged from 0.01 inches in Ely, 0.03 inches in Reno, 0.06 inches in Winnemucca, 0.10 inches in Eureka, and 0.17 inches in Elko.

Crops Summary

Days Suitable for Fieldwork: 7.0 days. Topsoil Moisture: 5% very short, 10% short, 75% adequate, and 10% surplus. Subsoil Moisture: 5% very short, 10% short, 80% adequate, and 5% surplus. Pasture and Range Condition: 10% poor, 25% fair, 55% good, and 10% excellent. The last cutting of **alfalfa** neared completion. In northwest Nevada, **corn** silage and **potato** harvest continued. New winter **wheat** plantings emerged with several inches of growth visible in some fields.

Weather for the Week of 10/09/2023 through 10/15/2023

Station	Temperature				Precipitation ²
	High	Low	Average	Departure from Normal ¹	
	-- Degrees Fahrenheit --				
Reno	80	36	58	1	0.03
Elko	83	26	50	1	0.17
Ely	77	20	48	0	0.01
Winnemucca	83	33	54	3	0.06
Eureka	76	29	50	1	0.10
Tonopah	78	33	54	-1	0.00
Las Vegas	93	55	73	1	0.00

(NA) Not available

¹ Normal periods 1990-2020 used in departure from normal calculations.

² Rain or melted snow/ice.

Data retrieved from NOAA and NWS. Calculated by USDA NASS. All rights reserved.

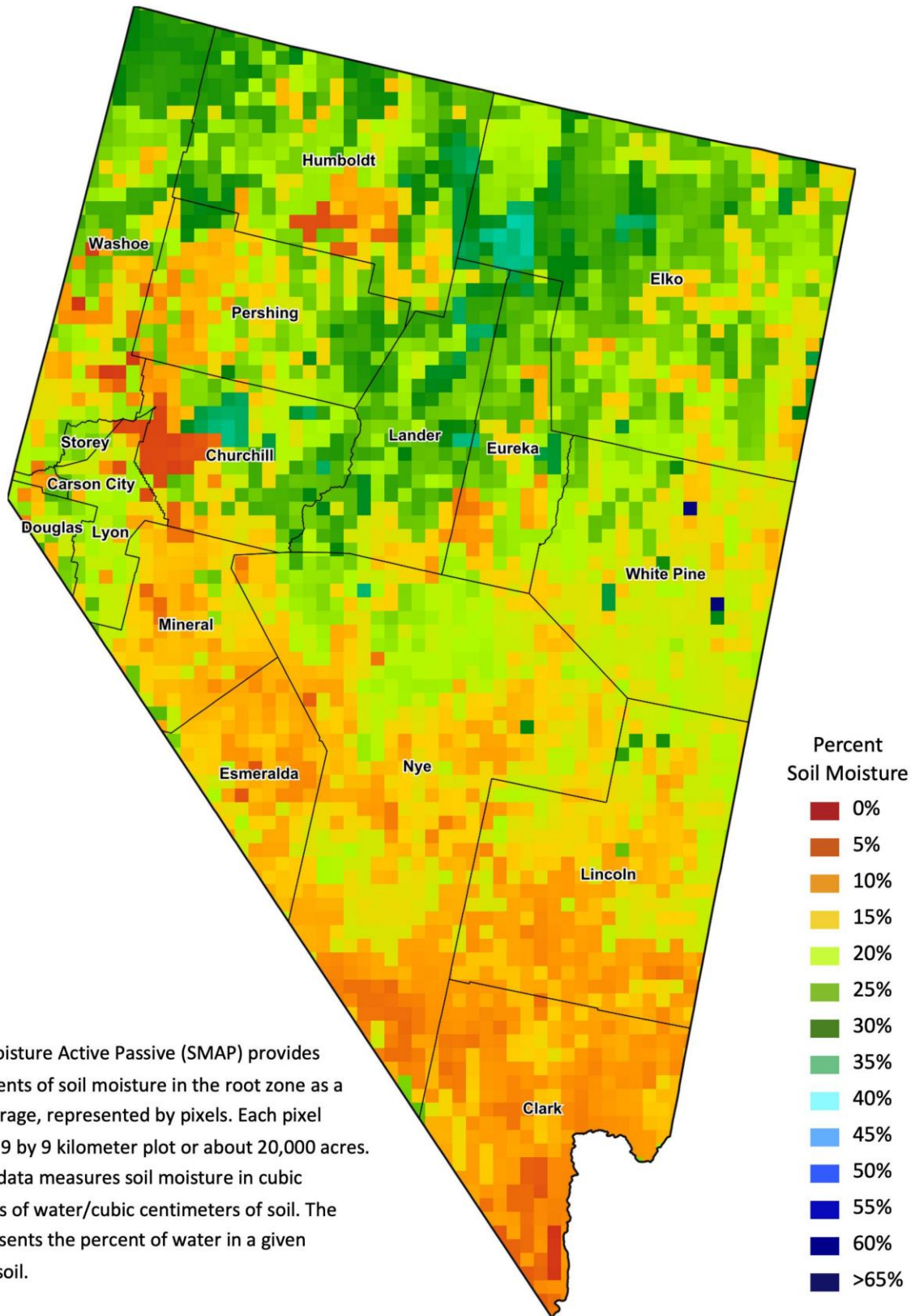
Drought Conditions from the U.S. Drought Monitor as of 10/10/2023

Time	Percent of Land in Drought Rating						Drought Severity (DSCI)
	None	D0	D1	D2	D3	D4	
Current	94.27	4.12	1.60	0.00	0.00	0.00	7
Last Week	94.28	4.12	1.60	0.00	0.00	0.00	7
3 Months Ago	78.45	7.45	14.11	0.00	0.00	0.00	36
One Year Ago	0.00	0.00	0.48	54.91	44.61	0.00	344

The U.S. Drought Monitor is jointly produced by the National Drought Mitigation Center at the University of Nebraska-Lincoln, the United States Department of Agriculture, and the National Oceanic and Atmospheric Administration.
droughtmonitor.unl.edu/CurrentMap/StateDroughtMonitor.aspx?NV



Nevada Soil Moisture Map for the Week of October 2 - 8, 2023



The Soil Moisture Active Passive (SMAP) provides measurements of soil moisture in the root zone as a weekly average, represented by pixels. Each pixel represents 9 by 9 kilometer plot or about 20,000 acres. The SMAP data measures soil moisture in cubic centimeters of water/cubic centimeters of soil. The scale represents the percent of water in a given volume of soil.