



Nevada Crop Progress & Condition

Pacific Regional Office · 650 Capitol Mall, Suite 6-100 · Sacramento, CA 95814 · (916) 738-6600 · www.nass.usda.gov/nv

Week Ending August 13, 2023

Released August 14, 2023

Weather Summary

The average low temperatures for Nevada ranged from 44 degrees in Ely to 80 degrees in Las Vegas. The average high temperatures ranged from 89 degrees in Ely and Eureka to 106 degrees in Las Vegas. Precipitation for the state was only observed in Ely with 0.01 inches.

Crops Summary

Days Suitable for Fieldwork: 7.0 days. Topsoil Moisture: 25% very short, 25% short, 45% adequate, and 5% surplus. Subsoil Moisture: 15% very short, 30% short, and 55% adequate. Pasture and Range Condition: 15% very poor, 15% poor, 40% fair, 25% good, and 5% excellent. Temperatures ranged from average to slightly below average during the week and conditions remained dry. **Alfalfa** growth continued strong, and the second cutting was mostly completed. Grains were being dried. Grasshoppers continued to be an issue in some areas.

Weather for the Week of 08/07/2023 through 08/13/2023

| Station | Temperature | | | | Precipitation ² |
|------------|--------------------------|-----|---------|------------------------------------|----------------------------|
| | High | Low | Average | Departure from Normal ¹ | |
| | -- Degrees Fahrenheit -- | | | | |
| Reno | 96 | 56 | 78 | 2 | 0.00 |
| Elko | 92 | 48 | 70 | -1 | 0.00 |
| Ely | 89 | 44 | 67 | -2 | 0.01 |
| Winnemucca | 97 | 48 | 71 | -2 | 0.00 |
| Eureka | 89 | 48 | 68 | -2 | 0.00 |
| Tonopah | 94 | 55 | 74 | -1 | 0.00 |
| Las Vegas | 106 | 80 | 91 | -2 | 0.00 |

(NA) Not available

¹ Normal periods 1990-2020 used in departure from normal calculations.

² Rain or melted snow/ice.

Data retrieved from NOAA and NWS. Calculated by USDA NASS. All rights reserved.

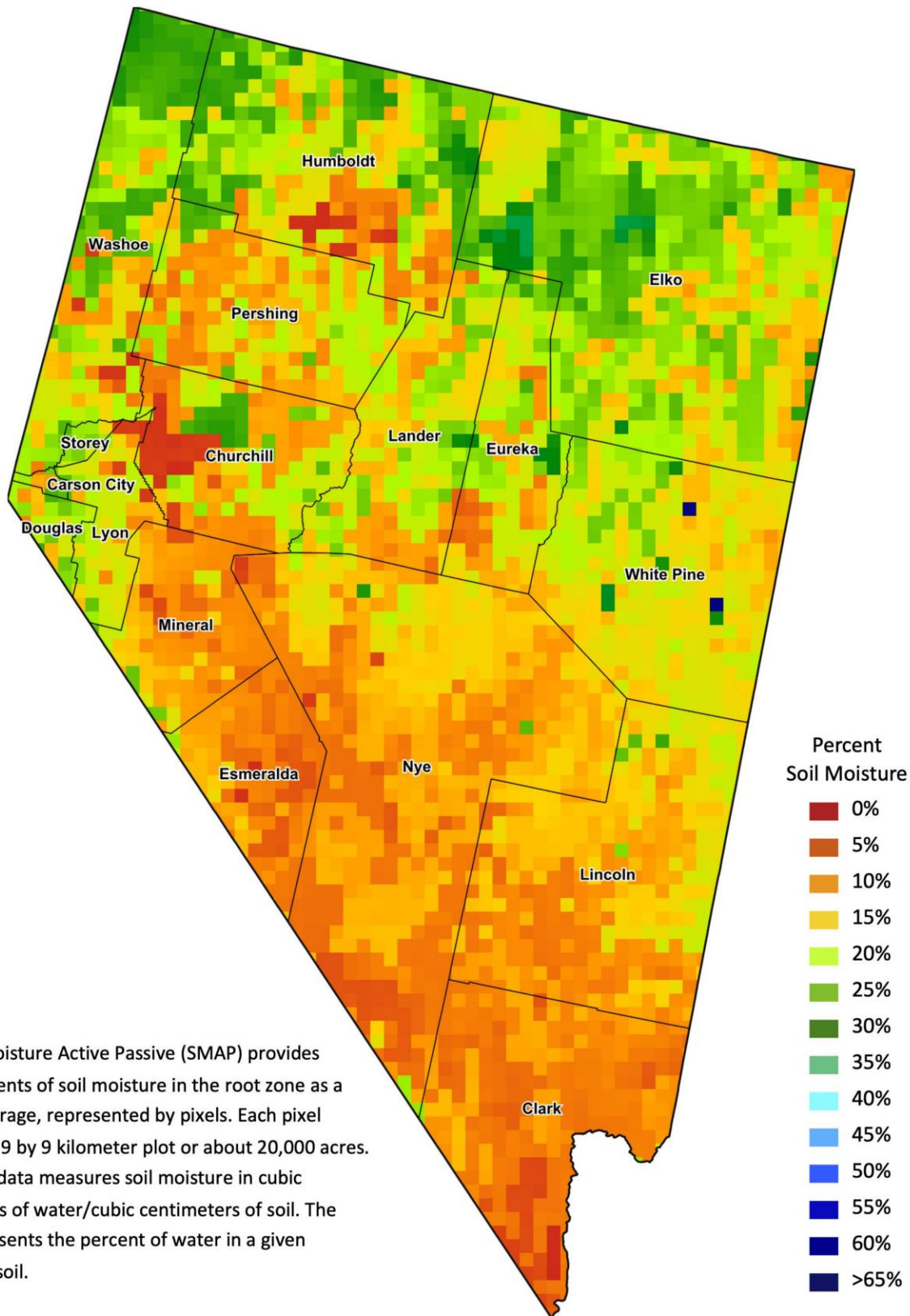
Drought Conditions from the U.S. Drought Monitor as of 08/08/2023

| Time | Percent of Land in Drought Rating | | | | | | Drought Severity (DSCI) |
|--------------|-----------------------------------|-------|-------|-------|-------|------|-------------------------|
| | None | D0 | D1 | D2 | D3 | D4 | |
| Current | 78.06 | 7.80 | 14.14 | 0.00 | 0.00 | 0.00 | 36 |
| Last Week | 78.06 | 7.83 | 14.11 | 0.00 | 0.00 | 0.00 | 36 |
| 3 Months Ago | 33.42 | 44.48 | 19.33 | 2.78 | 0.00 | 0.00 | 91 |
| One Year Ago | 0.00 | 0.00 | 0.48 | 45.84 | 49.52 | 4.17 | 357 |

The U.S. Drought Monitor is jointly produced by the National Drought Mitigation Center at the University of Nebraska-Lincoln, the United States Department of Agriculture, and the National Oceanic and Atmospheric Administration.
droughtmonitor.unl.edu/CurrentMap/StateDroughtMonitor.aspx?NV



Nevada Soil Moisture Map for the Week of July 31 - August 6, 2023



The Soil Moisture Active Passive (SMAP) provides measurements of soil moisture in the root zone as a weekly average, represented by pixels. Each pixel represents 9 by 9 kilometer plot or about 20,000 acres. The SMAP data measures soil moisture in cubic centimeters of water/cubic centimeters of soil. The scale represents the percent of water in a given volume of soil.