



# Nevada Crop Progress & Condition

Pacific Regional Office · 650 Capitol Mall, Suite 6-100 · Sacramento, CA 95814 · (916) 738-6600 · [www.nass.usda.gov/nv](http://www.nass.usda.gov/nv)

Week Ending August 6, 2023

Released August 7, 2023

## Weather Summary

The average low temperatures for Nevada ranged from 46 degrees in Ely to 75 degrees in Las Vegas. The average high temperatures ranged from 90 degrees in Eureka to 109 degrees in Las Vegas. Precipitation for Nevada ranged from 0.12 inches in Las Vegas, 0.17 inches in Winnemucca, 0.18 inches in Elko, 0.19 inches in Eureka, and 1.09 inches in Ely.

## Crops Summary

Days Suitable for Fieldwork: 7.0 days. Topsoil Moisture: 20% very short, 40% short, 35% adequate, and 5% surplus. Subsoil Moisture: 20% very short, 40% short, and 40% adequate. Pasture and Range Condition: 15% very poor, 25% poor, 40% fair, 15% good, and 5% excellent. High temperatures continued across Nevada. Thunderstorms benefitted crops and pasture. The second cutting of **alfalfa** was harvested.

## Weather for the Week of 07/31/2023 through 08/06/2023

Station	Temperature				Precipitation <sup>2</sup>
	High	Low	Average	Departure from Normal <sup>1</sup>	
	-- Degrees Fahrenheit --				
Reno	96	61	78	0	0.00
Elko	96	50	72	0	0.18
Ely	92	46	67	-3	1.09
Winnemucca	95	51	73	-2	0.17
Eureka	90	47	68	-2	0.19
Tonopah	96	54	75	-1	0.00
Las Vegas	109	75	90	-3	0.12

(NA) Not available

<sup>1</sup> Normal periods 1990-2020 used in departure from normal calculations.

<sup>2</sup> Rain or melted snow/ice.

Data retrieved from NOAA and NWS. Calculated by USDA NASS. All rights reserved.

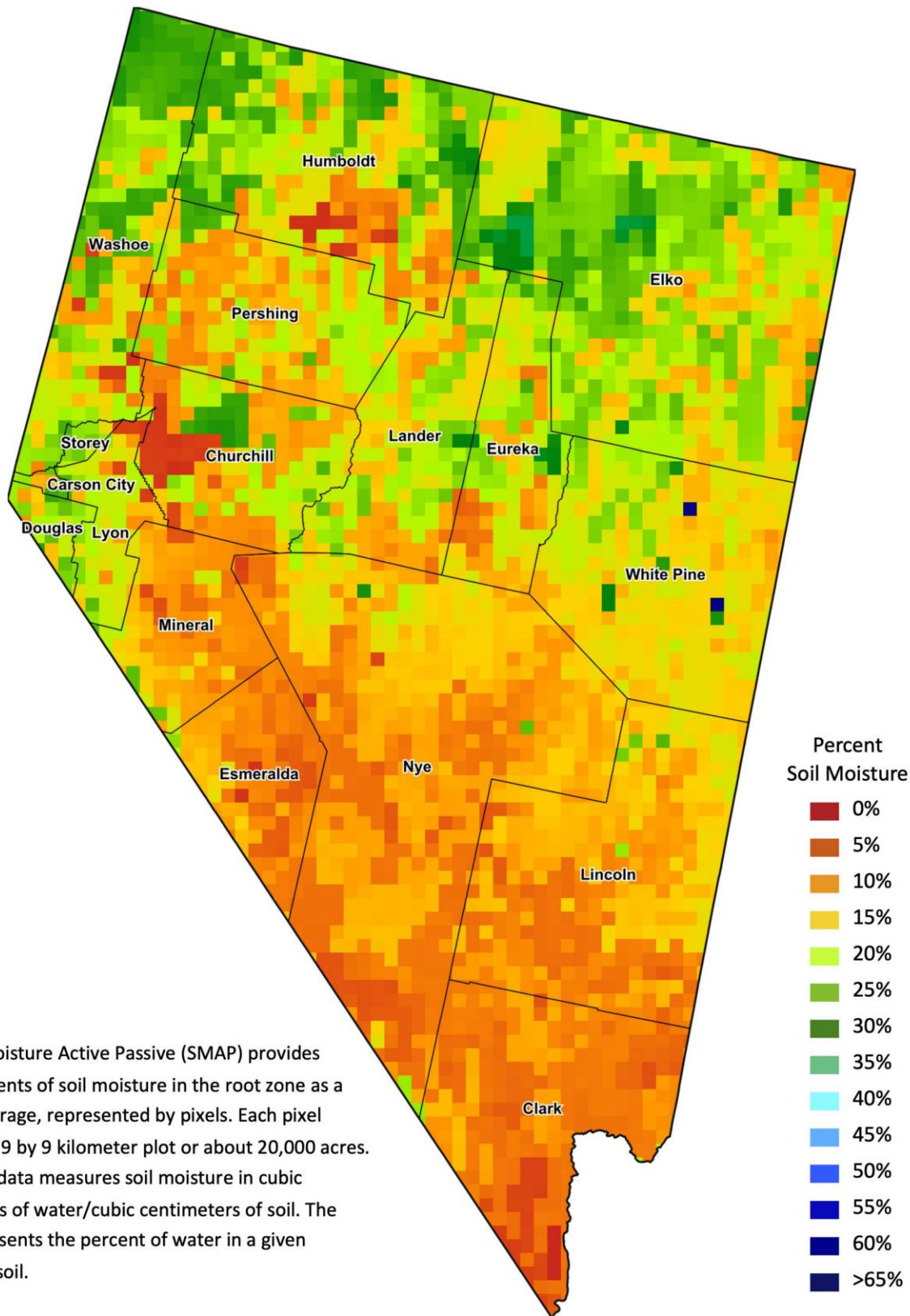
## Drought Conditions from the U.S. Drought Monitor as of 08/01/2023

Time	Percent of Land in Drought Rating						Drought Severity (DSCI)
	None	D0	D1	D2	D3	D4	
Current	78.06	7.83	14.11	0.00	0.00	0.00	36
Last Week	78.45	7.45	14.11	0.00	0.00	0.00	36
3 Months Ago	33.42	44.48	19.33	2.78	0.00	0.00	91
One Year Ago	0.00	0.00	0.48	35.97	34.73	28.82	392

The U.S. Drought Monitor is jointly produced by the National Drought Mitigation Center at the University of Nebraska-Lincoln, the United States Department of Agriculture, and the National Oceanic and Atmospheric Administration.  
[droughtmonitor.unl.edu/CurrentMap/StateDroughtMonitor.aspx?NV](http://droughtmonitor.unl.edu/CurrentMap/StateDroughtMonitor.aspx?NV)



# Nevada Soil Moisture Map for the Week of July 24 - 30, 2023



The Soil Moisture Active Passive (SMAP) provides measurements of soil moisture in the root zone as a weekly average, represented by pixels. Each pixel represents 9 by 9 kilometer plot or about 20,000 acres. The SMAP data measures soil moisture in cubic centimeters of water/cubic centimeters of soil. The scale represents the percent of water in a given volume of soil.