



# Nevada Crop Progress & Condition

Pacific Regional Office · 650 Capitol Mall, Suite 6-100 · Sacramento, CA 95814 · (916) 738-6600 · [www.nass.usda.gov/nv](http://www.nass.usda.gov/nv)

Week Ending July 30, 2023

Released July 31, 2023

## Weather Summary

The average low temperatures for Nevada ranged from 48 degrees in Ely and Winnemucca to 87 degrees in Las Vegas. The average high temperatures ranged from 93 degrees in Ely to 113 degrees in Las Vegas. Precipitation for the state was only observed in Tonopah with 0.01 inches.

## Crops Summary

Days Suitable for Fieldwork: 7.0 days. Topsoil Moisture: 30% very short, 20% short, and 50% adequate. Subsoil Moisture: 20% very short, 35% short, and 45% adequate. Pasture and Range Condition: 15% very poor, 20% poor, 40% fair, 20% good, and 5% excellent. Temperatures remained high and wind continued to dry the soil out. The second cutting of **alfalfa** and some **grass hay** were harvested. Pasture grasses were turning brown. Grasshoppers and Mormon crickets affected pasture quality.

## Weather for the Week of 07/24/2023 through 07/30/2023

Station	Temperature				Precipitation <sup>2</sup>
	High	Low	Average	Departure from Normal <sup>1</sup>	
	-- Degrees Fahrenheit --				
Reno	99	58	79	1	0.00
Elko	98	49	75	2	0.00
Ely	93	48	72	2	0.00
Winnemucca	99	48	76	1	0.00
Eureka	95	50	73	2	0.00
Tonopah	98	59	79	3	0.01
Las Vegas	113	87	100	6	0.00

(NA) Not available

<sup>1</sup> Normal periods 1990-2020 used in departure from normal calculations.

<sup>2</sup> Rain or melted snow/ice.

Data retrieved from NOAA and NWS. Calculated by USDA NASS. All rights reserved.

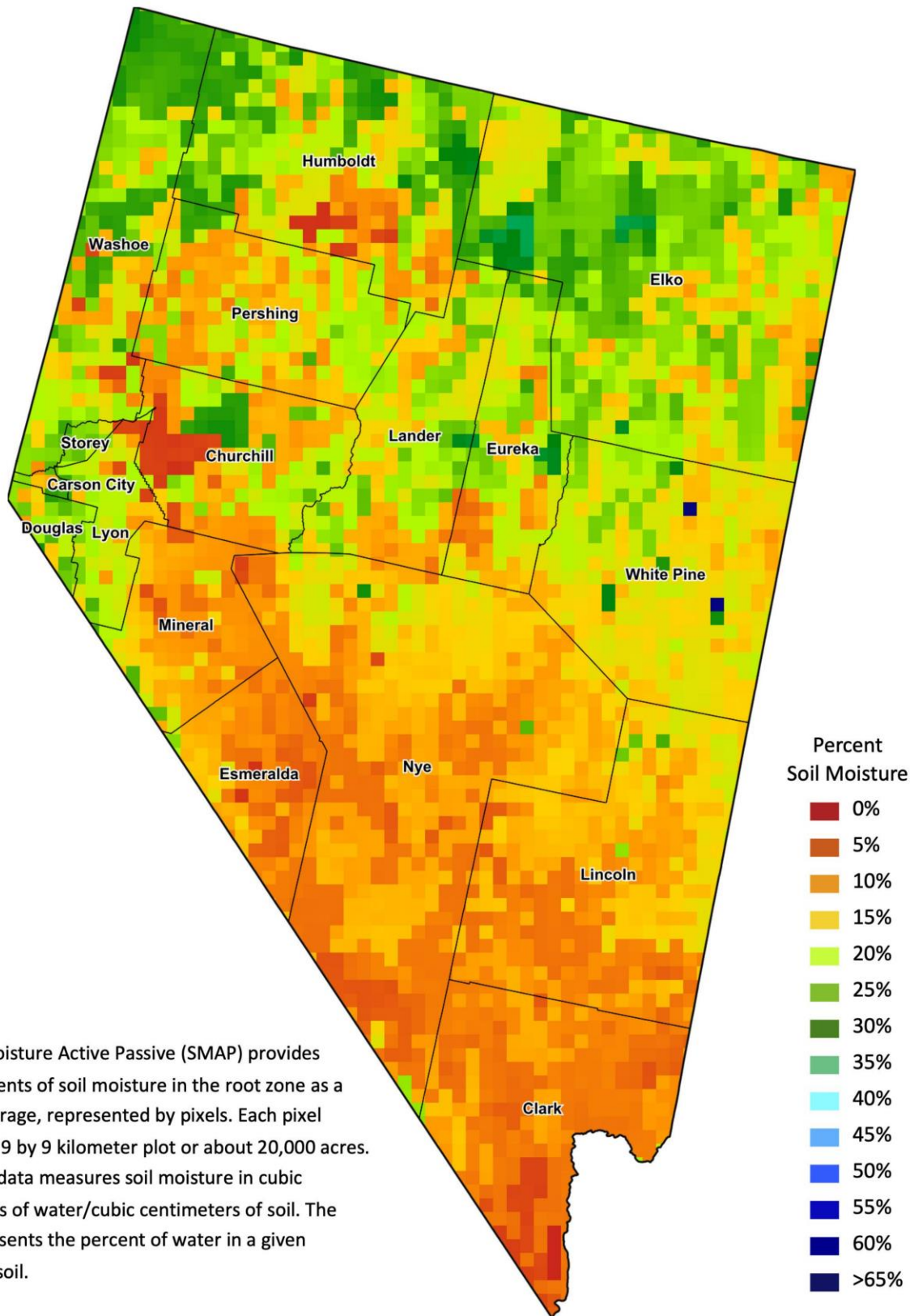
## Drought Conditions from the U.S. Drought Monitor as of 07/25/2023

Time	Percent of Land in Drought Rating						Drought Severity (DSCI)
	None	D0	D1	D2	D3	D4	
Current	78.45	7.45	14.11	0.00	0.00	0.00	36
Last Week	78.45	7.45	14.11	0.00	0.00	0.00	36
3 Months Ago	33.42	44.48	19.33	2.78	0.00	0.00	91
One Year Ago	0.00	0.00	0.48	35.97	33.75	29.80	393

The U.S. Drought Monitor is jointly produced by the National Drought Mitigation Center at the University of Nebraska-Lincoln, the United States Department of Agriculture, and the National Oceanic and Atmospheric Administration.  
[droughtmonitor.unl.edu/CurrentMap/StateDroughtMonitor.aspx?NV](http://droughtmonitor.unl.edu/CurrentMap/StateDroughtMonitor.aspx?NV)



# Nevada Soil Moisture Map for the Week of July 17 - 23, 2023



The Soil Moisture Active Passive (SMAP) provides measurements of soil moisture in the root zone as a weekly average, represented by pixels. Each pixel represents 9 by 9 kilometer plot or about 20,000 acres. The SMAP data measures soil moisture in cubic centimeters of water/cubic centimeters of soil. The scale represents the percent of water in a given volume of soil.