



# Nevada Crop Progress & Condition

Pacific Regional Office · 650 Capitol Mall, Suite 6-100 · Sacramento, CA 95814 · (916) 738-6600 · [www.nass.usda.gov/nv](http://www.nass.usda.gov/nv)

Week Ending June 25, 2023

Released June 26, 2023

## Weather Summary

The average low temperatures for Nevada ranged from 31 degrees in Ely and Winnemucca to 68 degrees in Las Vegas. The average high temperatures ranged from 78 degrees in Ely to 98 degrees in Las Vegas. Precipitation for the state was only observed in Reno with 0.01 inches.

## Crops Summary

Days Suitable for Fieldwork: 7.0 days. Topsoil Moisture: 5% short, 90% adequate, and 5% surplus. Subsoil Moisture: 15% short and 85% adequate. Pasture and Range Condition: 30% fair, 30% good, and 40% excellent. Dry winds and cooler temperatures dried out land after weeks of evening thunderstorms. The first cutting of hay was completed.

## Weather for the Week of 6/19/2023 through 6/25/2023

Station	Temperature				Precipitation <sup>2</sup>
	High	Low	Average	Departure from Normal <sup>1</sup>	
	-- Degrees Fahrenheit --				
Reno	83	41	63	-8	0.01
Elko	84	36	60	-5	0.00
Ely	78	31	56	-7	0.00
Winnemucca	85	31	59	-8	0.00
Eureka	81	33	56	-7	0.00
Tonopah	82	40	62	-9	0.00
Las Vegas	98	68	83	-7	0.00

(NA) Not available

<sup>1</sup> Normal periods 1990-2020 used in departure from normal calculations.

<sup>2</sup> Rain or melted snow/ice.

Data retrieved from NOAA and NWS. Calculated by USDA NASS. All rights reserved.

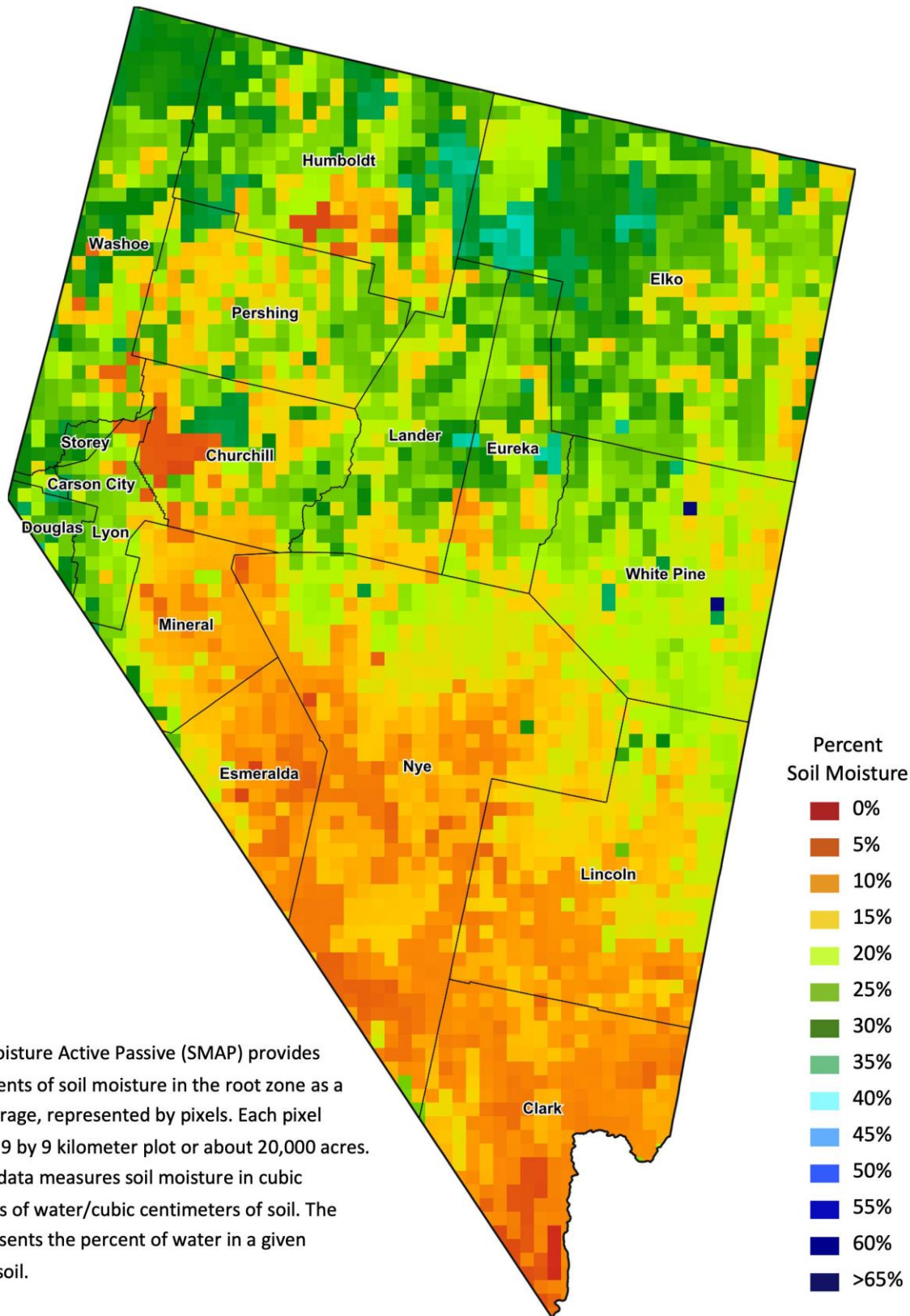
## Drought Conditions from the U.S. Drought Monitor

Time	Percent of Land in Drought Rating						Drought Severity (DSCI)
	None	D0	D1	D2	D3	D4	
Current	65.69	15.81	15.72	2.78	0.00	0.00	56
Last Week	65.69	14.18	17.35	2.78	0.00	0.00	57
3 Months Ago	4.52	15.97	59.85	19.66	0.00	0.00	195
One Year Ago	0.00	0.00	0.48	40.98	37.23	21.32	379

The U.S. Drought Monitor is jointly produced by the National Drought Mitigation Center at the University of Nebraska-Lincoln, the United States Department of Agriculture, and the National Oceanic and Atmospheric Administration.  
[droughtmonitor.unl.edu/CurrentMap/StateDroughtMonitor.aspx?NV](http://droughtmonitor.unl.edu/CurrentMap/StateDroughtMonitor.aspx?NV)



# Nevada Soil Moisture Map for the Week of June 12 - 18, 2023



The Soil Moisture Active Passive (SMAP) provides measurements of soil moisture in the root zone as a weekly average, represented by pixels. Each pixel represents 9 by 9 kilometer plot or about 20,000 acres. The SMAP data measures soil moisture in cubic centimeters of water/cubic centimeters of soil. The scale represents the percent of water in a given volume of soil.