



Nevada Crop Progress & Condition

Pacific Regional Office · 650 Capitol Mall, Suite 6-100 · Sacramento, CA 95814 · (916) 738-6600 · www.nass.usda.gov/nv

Week Ending June 4, 2023

Released June 5, 2023

Weather Summary

The average low temperatures for Nevada ranged from 36 degrees in Ely to 68 degrees in Las Vegas. The average high temperatures ranged from 74 degrees in Ely to 98 degrees in Las Vegas. Precipitation for Nevada ranged from 0.02 inches in Ely, 0.31 inches in Winnemucca, 0.46 inches in Reno, and 0.59 inches in Elko.

Crops Summary

Days Suitable for Fieldwork: 7.0 days. Topsoil Moisture: 5% short, 85% adequate, and 10% surplus. Subsoil Moisture: 15% short and 85% adequate. Pasture and Range Condition: 5% poor, 40% fair, 40% good, and 15% excellent. Scattered thunderstorms continued throughout the week producing heavy rain. Rangeland benefitted from the moisture and remained very green. First cutting of hay was completed early to reduce weeds.

Weather for the Week of 5/29/2023 through 6/04/2023

| Station | Temperature | | | | Precipitation ² |
|------------|--------------------------|-----|---------|------------------------------------|----------------------------|
| | High | Low | Average | Departure from Normal ¹ | |
| | -- Degrees Fahrenheit -- | | | | |
| Reno | 86 | 50 | 66 | 1 | 0.46 |
| Elko | 79 | 46 | 61 | 2 | 0.59 |
| Ely | 74 | 36 | 54 | -2 | 0.02 |
| Winnemucca | 82 | 41 | 61 | 1 | 0.31 |
| Eureka | N/A | N/A | N/A | N/A | N/A |
| Tonopah | 83 | 44 | 65 | 1 | 0.00 |
| Las Vegas | 98 | 68 | 82 | -1 | 0.00 |

(NA) Not available

¹ Normal periods 1990-2020 used in departure from normal calculations.

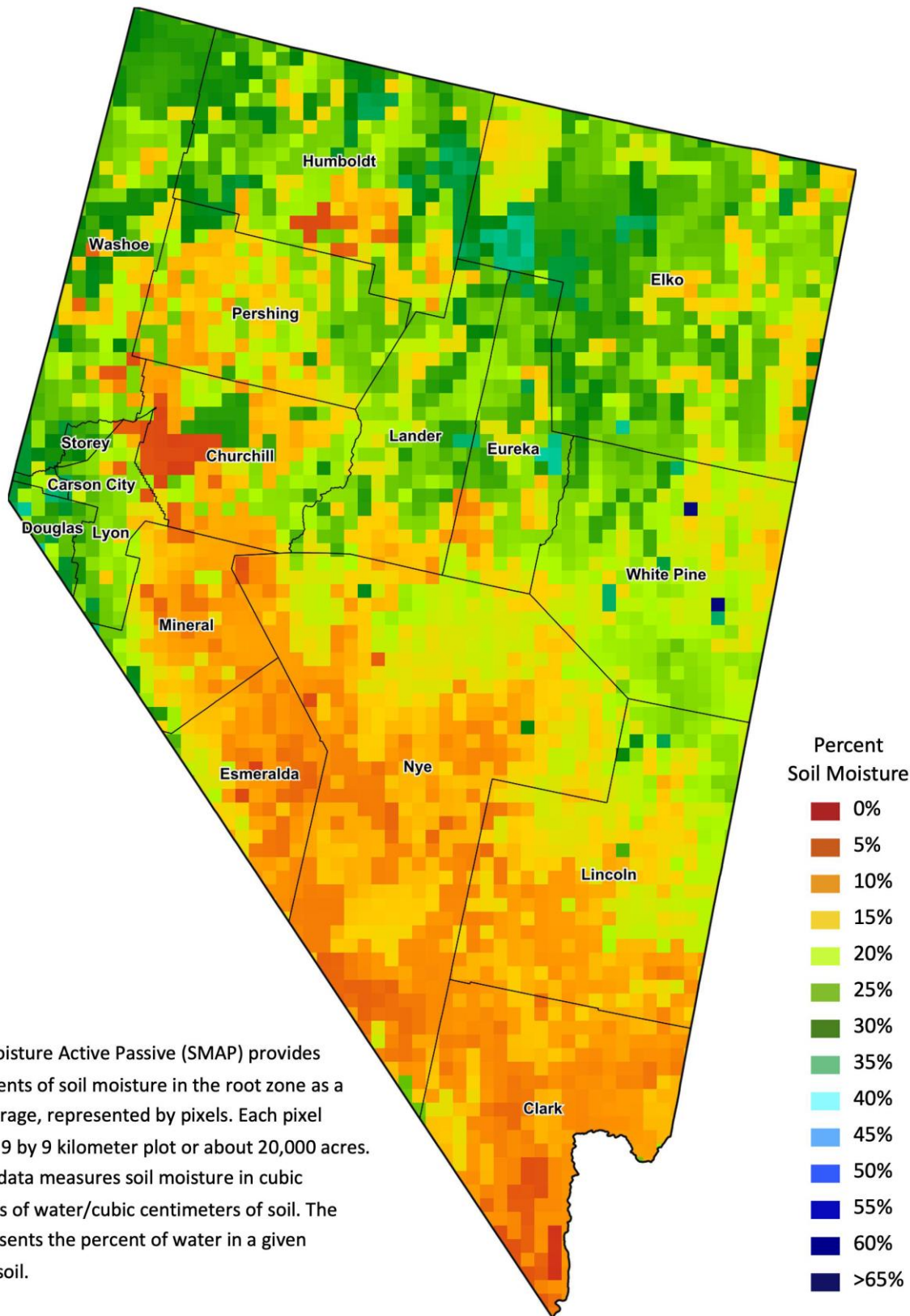
² Rain or melted snow/ice.

Data retrieved from NOAA and NWS. Calculated by USDA NASS. All rights reserved.

Drought Conditions from the U.S. Drought Monitor

| Time | Percent of Land in Drought Rating | | | | | | Drought Severity (DSCI) |
|--------------|-----------------------------------|-------|-------|-------|-------|-------|-------------------------|
| | None | D0 | D1 | D2 | D3 | D4 | |
| Current | 33.98 | 45.89 | 17.35 | 2.78 | 0.00 | 0.00 | 89 |
| Last Week | 33.97 | 45.90 | 17.35 | 2.78 | 0.00 | 0.00 | 89 |
| 3 Months Ago | 0.00 | 16.51 | 26.02 | 51.35 | 6.13 | 0.00 | 247 |
| One Year Ago | 0.00 | 0.00 | 0.48 | 44.17 | 34.04 | 21.32 | 376 |

The U.S. Drought Monitor is jointly produced by the National Drought Mitigation Center at the University of Nebraska-Lincoln, the United States Department of Agriculture, and the National Oceanic and Atmospheric Administration.
droughtmonitor.unl.edu/CurrentMap/StateDroughtMonitor.aspx?NV



The Soil Moisture Active Passive (SMAP) provides measurements of soil moisture in the root zone as a weekly average, represented by pixels. Each pixel represents 9 by 9 kilometer plot or about 20,000 acres. The SMAP data measures soil moisture in cubic centimeters of water/cubic centimeters of soil. The scale represents the percent of water in a given volume of soil.