



# Nevada Crop Progress & Condition

Pacific Regional Office · 650 Capitol Mall, Suite 6-100 · Sacramento, CA 95814 · (916) 738-6600 · [www.nass.usda.gov/nv](http://www.nass.usda.gov/nv)

Week Ending May 21, 2023

Released May 22, 2023

## Weather Summary

The average low temperatures for Nevada ranged from 38 degrees in Ely to 73 degrees in Las Vegas. The average high temperatures ranged from 78 degrees in Ely to 98 degrees in Las Vegas. Precipitation for Nevada ranged from 0.02 inches in Eureka, 0.03 inches in Winnemucca, 0.05 inches in Ely and Reno, and 0.17 inches in Elko.

## Crops Summary

Days Suitable for Fieldwork: 7.0 days. Topsoil Moisture: 10% short, 80% adequate, and 10% surplus. Subsoil Moisture: 15% short, 80% adequate, and 5% surplus. Pasture and Range Condition: 10% poor, 40% fair, 40% good, and 10% excellent. Warm temperatures continued to promote plant growth. Bee apiaries remained in many **alfalfa** seed fields. Remaining winter crop fields were harvested and prepped for **corn** planting.

## Weather for the Week of 5/15/2023 through 5/21/2023

Station	Temperature				Precipitation <sup>2</sup>
	High	Low	Average	Departure from Normal <sup>1</sup>	
	-- Degrees Fahrenheit --				
Reno	90	49	70	9	0.05
Elko	84	44	64	9	0.17
Ely	78	38	57	5	0.05
Winnemucca	90	43	64	8	0.03
Eureka	81	43	60	9	0.02
Tonopah	N/A	N/A	N/A	N/A	N/A
Las Vegas	98	73	85	7	0.00

(NA) Not available

<sup>1</sup> Normal periods 1990-2020 used in departure from normal calculations.

<sup>2</sup> Rain or melted snow/ice.

Data retrieved from NOAA and NWS. Calculated by USDA NASS. All rights reserved.

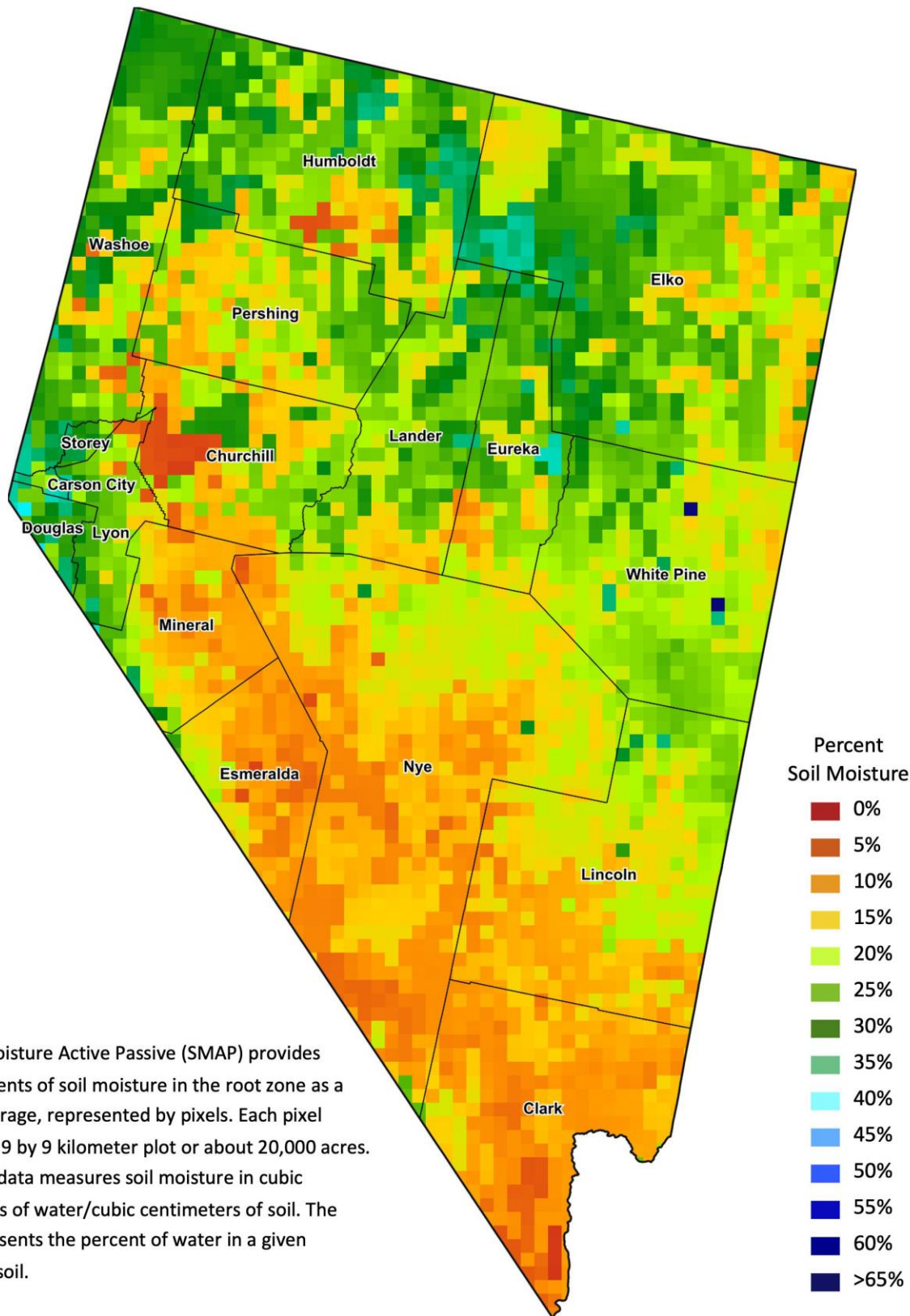
## Drought Conditions from the U.S. Drought Monitor

Time	Percent of Land in Drought Rating						Drought Severity (DSCI)
	None	D0	D1	D2	D3	D4	
Current	33.42	44.48	19.33	2.78	0.00	0.00	91
Last Week	33.42	44.48	19.33	2.78	0.00	0.00	91
3 Months Ago	0.00	12.60	28.52	52.75	6.13	0.00	252
One Year Ago	0.00	0.00	0.00	45.13	34.61	20.26	375

The U.S. Drought Monitor is jointly produced by the National Drought Mitigation Center at the University of Nebraska-Lincoln, the United States Department of Agriculture, and the National Oceanic and Atmospheric Administration.  
[droughtmonitor.unl.edu/CurrentMap/StateDroughtMonitor.aspx?NV](http://droughtmonitor.unl.edu/CurrentMap/StateDroughtMonitor.aspx?NV)



# Nevada Soil Moisture Map for the Week of May 8 - 14, 2023



The Soil Moisture Active Passive (SMAP) provides measurements of soil moisture in the root zone as a weekly average, represented by pixels. Each pixel represents 9 by 9 kilometer plot or about 20,000 acres. The SMAP data measures soil moisture in cubic centimeters of water/cubic centimeters of soil. The scale represents the percent of water in a given volume of soil.