



# Nevada Crop Progress & Condition

Pacific Regional Office · 650 Capitol Mall 6-100 · Sacramento, CA 95812-1258 · (916) 738-6600 · [www.nass.usda.gov/nv](http://www.nass.usda.gov/nv)

Week Ending April 2, 2023

Released April 3, 2023

## Crops Summary

Days Suitable for Fieldwork: 2.1 days. Topsoil Moisture: 5% short, 55% adequate, and 40% surplus. Subsoil Moisture: 5% very short, 5% short, 85% adequate, and 5% surplus. Weather conditions were cold, wet, and often snowy in the northern parts of the state. This has delayed crop growth and field work. **Alfalfa** and **winter wheat** have shown little growth due to cold soil and temperatures. Many fields continued to be too wet for heavy equipment use. Range cattle were largely consuming dry and dead forage carried over from last year. Turnout of ranch cattle was delayed due to the snow cover and muddy conditions. Snow was still accumulating at lower elevations as snow melt was slowed due to cold temperatures.

## Weather for the Week of 3/27/2023 through 4/2/2023

Station	Temperature				Precipitation <sup>2</sup>
	High	Low	Average	Departure from Normal <sup>1</sup>	
	-- Degrees Fahrenheit --				
Reno	NA	NA	NA	NA	NA
Elko	NA	NA	NA	NA	NA
Ely	NA	NA	NA	NA	NA
Winnemucca	NA	NA	NA	NA	NA
Eureka	NA	NA	NA	NA	NA
Tonopah	NA	NA	NA	NA	NA
Las Vegas	NA	NA	NA	NA	NA

<sup>1</sup> Normal periods 1990-2020 used in departure from normal calculations.

<sup>2</sup> Rain or melted snow/ice.

Data retrieved from NOAA and NWS. Calculated by USDA NASS. All rights reserved.

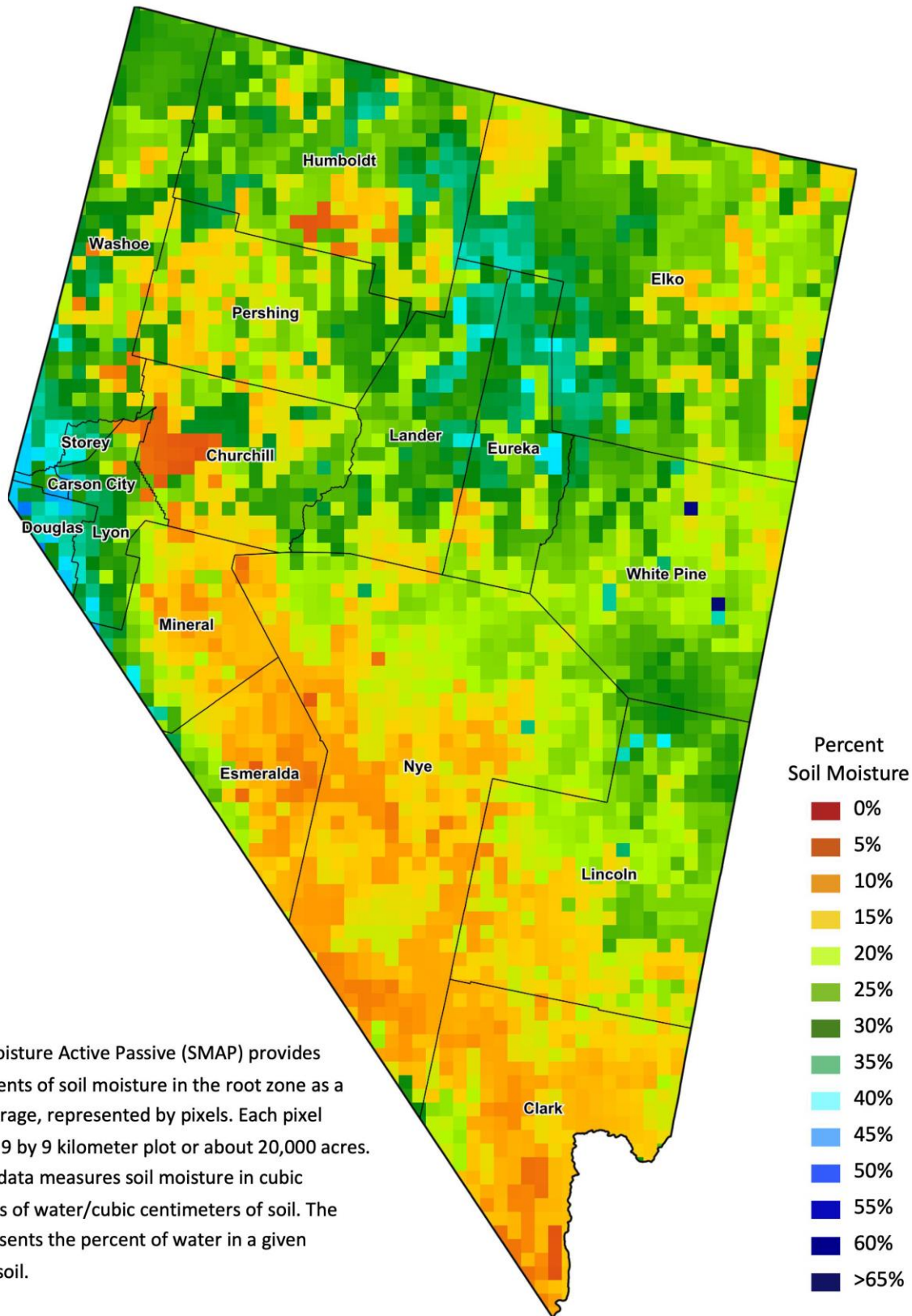
## Drought Conditions from the U.S. Drought Monitor

Time	Percent of Land in Drought Rating						Drought Severity (DSCI)
	None	D0	D1	D2	D3	D4	
Current	17.31	33.80	43.89	5.00	0.00	0.00	137
Last Week	4.52	15.97	59.85	19.66	0.00	0.00	195
3 Months Ago	0.00	0.00	0.49	75.06	24.45	0.00	324
One Year Ago	0.00	0.00	0.00	64.23	28.26	7.50	343

The U.S. Drought Monitor is jointly produced by the National Drought Mitigation Center at the University of Nebraska-Lincoln, the United States Department of Agriculture, and the National Oceanic and Atmospheric Administration.  
[droughtmonitor.unl.edu/CurrentMap/StateDroughtMonitor.aspx?NV](http://droughtmonitor.unl.edu/CurrentMap/StateDroughtMonitor.aspx?NV)



# Nevada Soil Moisture Map for the Week of March 20 - 26, 2023



The Soil Moisture Active Passive (SMAP) provides measurements of soil moisture in the root zone as a weekly average, represented by pixels. Each pixel represents 9 by 9 kilometer plot or about 20,000 acres. The SMAP data measures soil moisture in cubic centimeters of water/cubic centimeters of soil. The scale represents the percent of water in a given volume of soil.