



Nevada Crop Progress & Condition

Pacific Regional Office · 650 Capitol Mall 6-100 · Sacramento, CA 95812-1258 · (916) 738-6600 · www.nass.usda.gov/nv

Week Ending November 27, 2022

Released November 29, 2022

Weather Summary

The average lows for Nevada ranged from 2 degrees in Elko to 36 degrees in Las Vegas. The average highs ranged from 44 degrees in Elko to 67 degrees in Las Vegas. Precipitation for the state was only observed in Elko with 0.04 inches.

Crops Summary

Days Suitable for Fieldwork: 7.0 days. Topsoil Moisture: 15% very short, 40% short, and 45% adequate. Subsoil Moisture: 20% very short, 30% short, and 50% adequate. Overall, there were no major changes in soil moisture across the state. Crop conditions remained mostly unchanged.

Weather for the Week of 11/21/2022 through 11/27/2022

Station	Temperature				Precipitation ²
	High	Low	Average	Departure from Normal ¹	
	-- Degrees Fahrenheit --				
Reno	57	17	38	-3	0.00
Elko	44	2	23	-10	0.04
Ely	57	9	31	-1	0.00
Winnemucca	53	5	29	-6	0.00
Eureka	53	14	30	-3	0.00
Tonopah	56	16	37	0	0.00
Las Vegas	67	36	51	-2	0.00

¹ Normal periods 1990-2020 used in departure from normal calculations.

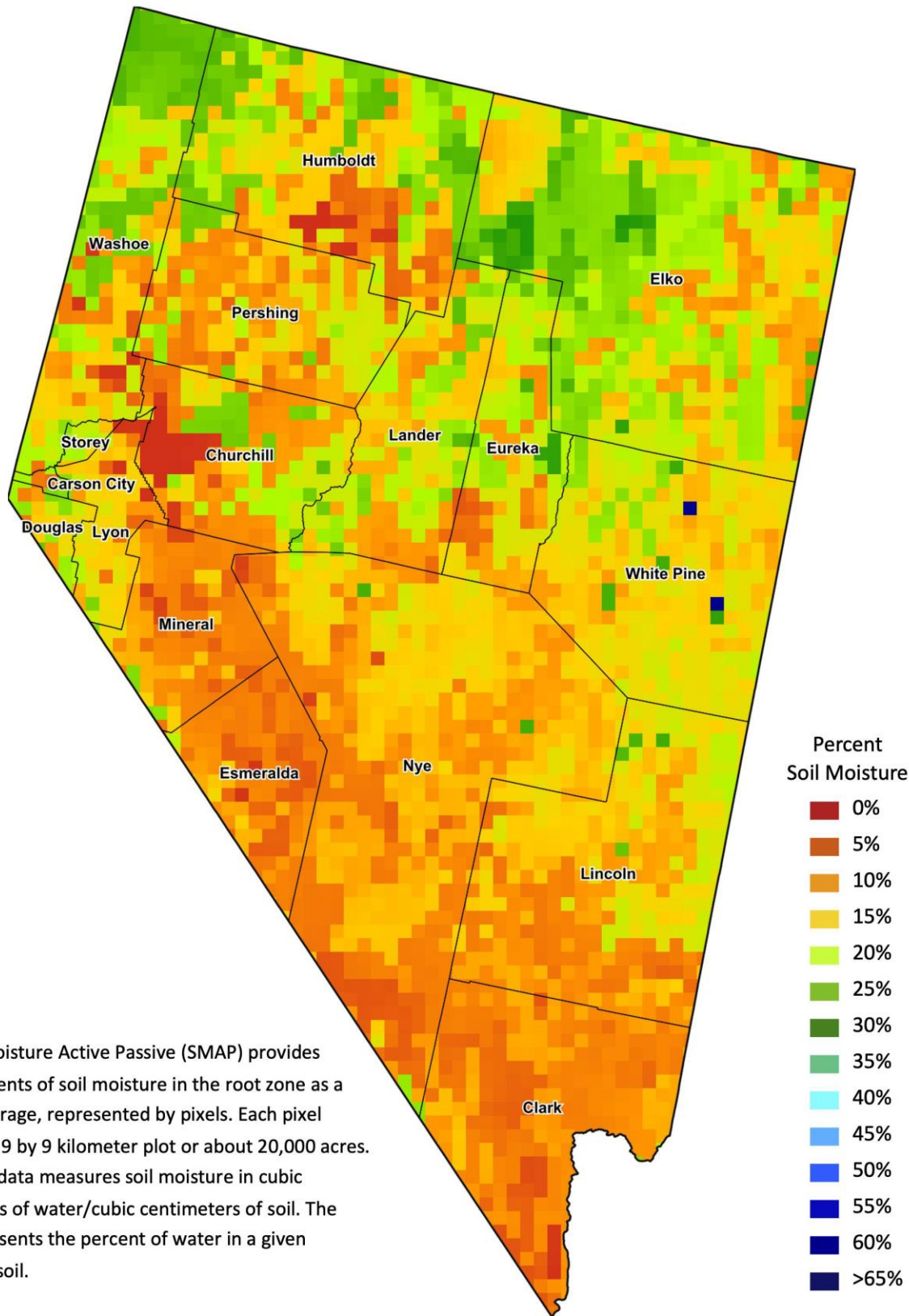
² Rain or melted snow/ice.

Data retrieved from NOAA and NWS. Calculated by USDA NASS. All rights reserved.

Drought Conditions from the U.S. Drought Monitor

Time	Percent of Land in Drought Rating						Drought Severity (DSCI)
	None	D0	D1	D2	D3	D4	
Current	0.00	0.00	0.49	56.14	43.37	0.00	343
Last Week	0.00	0.00	0.49	56.14	43.37	0.00	343
3 Months Ago	0.00	0.00	0.48	47.32	52.21	0.00	352
One Year Ago	0.00	0.00	10.02	33.65	31.31	25.02	371

The U.S. Drought Monitor is jointly produced by the National Drought Mitigation Center at the University of Nebraska-Lincoln, the United States Department of Agriculture, and the National Oceanic and Atmospheric Administration.
droughtmonitor.unl.edu/CurrentMap/StateDroughtMonitor.aspx?NV



The Soil Moisture Active Passive (SMAP) provides measurements of soil moisture in the root zone as a weekly average, represented by pixels. Each pixel represents 9 by 9 kilometer plot or about 20,000 acres. The SMAP data measures soil moisture in cubic centimeters of water/cubic centimeters of soil. The scale represents the percent of water in a given volume of soil.