



Nevada Crop Progress & Condition

Pacific Regional Office · 650 Capitol Mall 6-100 · Sacramento, CA 95812-1258 · (916) 738-6600 · www.nass.usda.gov/nv

Week Ending May 29, 2022

Released May 31, 2022

Weather Summary

The average lows for Nevada ranged from 29 degrees in Ely to 70 degrees in Las Vegas. The average highs ranged from 83 degrees in Eureka to 102 degrees in Las Vegas. Precipitation for Nevada ranged from 0.07 inches in Ely, 0.14 inches in Elko, 0.16 inches in Eureka, and 0.17 inches in Winnemucca.

Crops Summary

Days Suitable for Fieldwork: 6.8 days. Topsoil Moisture: 20% very short, 40% short, and 40% adequate. Subsoil Moisture: 25% very short, 55% short, and 20% adequate. Pasture and Range Condition: 5% very poor, 15% poor, 60% fair, and 20% good. Alfalfa had favorable growth conditions, due to the mostly warm and dry weather. There were a few showers on Wednesday and during the weekend that affected the northern parts of the state. A mild frost was reported up north during the weekend. Some farmers reported large populations of pests such as crickets and grasshoppers.

Weather for the Week of 05/23/2022 through 05/29/2022

Station	Temperature				Precipitation ²
	High	Low	Average	Departure from Normal ¹	
	-- Degrees Fahrenheit --				-- Inches --
Reno	92	46	66	3	0.00
Elko	92	34	58	1	0.14
Ely	86	29	56	1	0.07
Winnemucca	92	33	58	0	0.17
Eureka	83	33	55	1	0.16
Tonopah	90	44	66	4	0.00
Las Vegas	102	70	85	4	0.00

¹ Normal periods 1990-2020 used in departure from normal calculations.

² Rain or melted snow/ice.

Data retrieved from NOAA and NWS. Calculated by USDA NASS. All rights reserved.

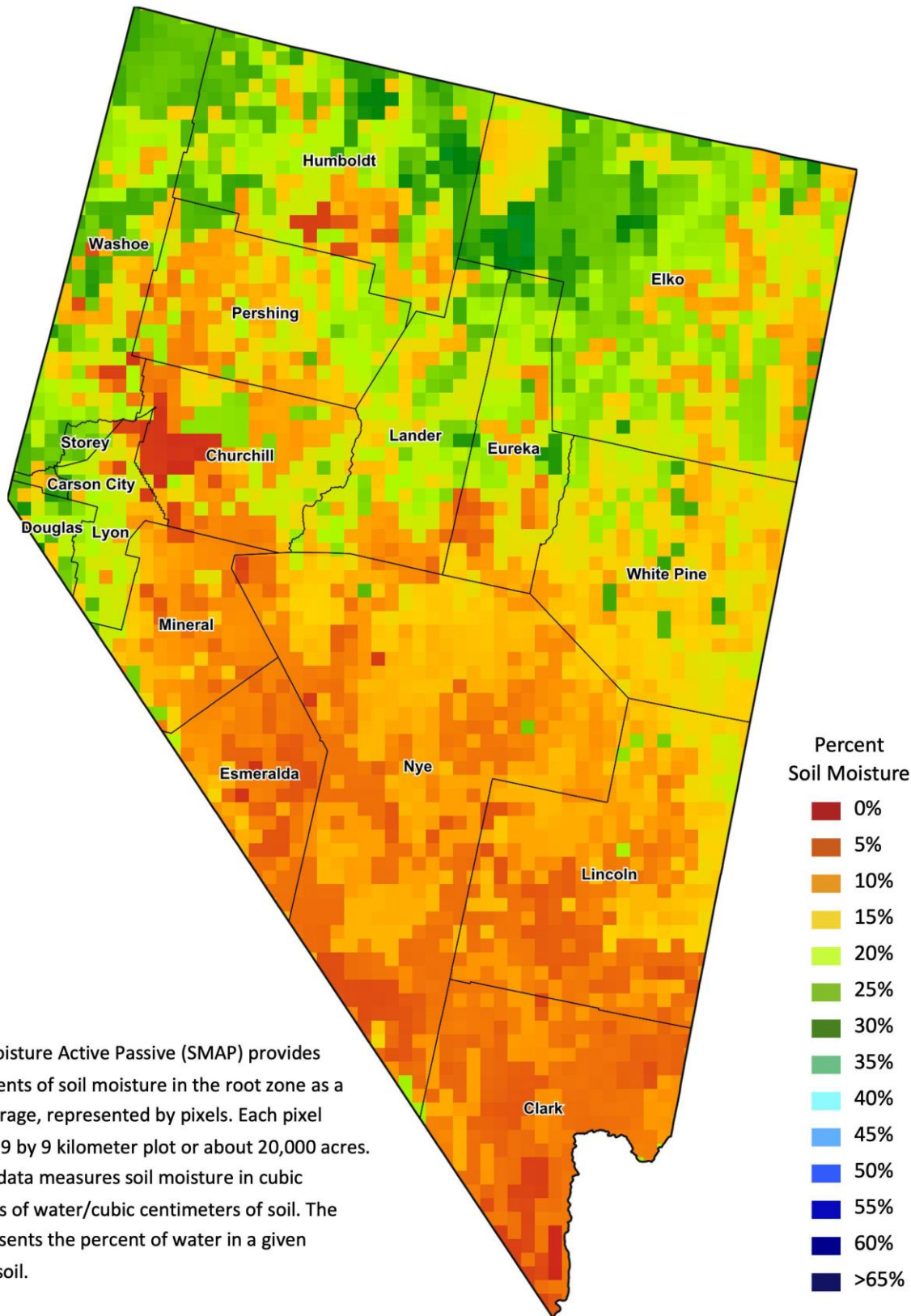
Drought Conditions from the U.S. Drought Monitor

Time	Percent of Land in Drought Rating						Drought Severity (DSCI)
	None	D0	D1	D2	D3	D4	
Current	0.00	0.00	0.00	45.13	34.61	20.26	375
Last Week	0.00	0.00	0.00	45.13	46.61	8.27	363
3 Months Ago	0.00	0.00	32.50	45.66	14.33	7.50	297
One Year Ago	0.00	0.00	5.83	18.72	34.87	40.58	410

The U.S. Drought Monitor is jointly produced by the National Drought Mitigation Center at the University of Nebraska-Lincoln, the United States Department of Agriculture, and the National Oceanic and Atmospheric Administration.
droughtmonitor.unl.edu/CurrentMap/StateDroughtMonitor.aspx?NV



Nevada Soil Moisture Map for the Week of May 16 - 22, 2022



The Soil Moisture Active Passive (SMAP) provides measurements of soil moisture in the root zone as a weekly average, represented by pixels. Each pixel represents 9 by 9 kilometer plot or about 20,000 acres. The SMAP data measures soil moisture in cubic centimeters of water/cubic centimeters of soil. The scale represents the percent of water in a given volume of soil.