



Nevada Crop Progress & Condition

Pacific Regional Office · 650 Capitol Mall 6-100 · Sacramento, CA 95812-1258 · (916) 738-6600 · www.nass.usda.gov/nv

Week Ending October 17, 2021

Released October 18, 2021

Weather Summary

The average lows for Nevada ranged from 13 degrees in Ely to 48 degrees in Las Vegas. The average highs ranged from 68 degrees in Ely to 83 degrees in Las Vegas. Precipitation for Nevada ranged from 0.06 inches in Reno, 0.09 inches in Winnemucca, 0.12 inches in Elko, 0.15 inches in Ely, and 0.24 inches in Eureka.

Crops Summary

Days Suitable for Fieldwork: 6.5 days. Topsoil Moisture: 10% very short, 10% short, and 80% adequate. Subsoil Moisture: 30% very short, 35% short, and 35% adequate. Pasture and Range Condition: 35% Very Poor, 30% Poor, and 35% Fair.

Week of 10/11/2021 through 10/17/2021

Station	Temperature				Precipitation ²
	High	Low	Average	Departure from Normal ¹	
Reno	73	30	47	-8	0.06
Elko	71	21	42	-5	0.12
Ely	68	13	37	-9	0.15
Winnemucca	74	23	43	-7	0.09
Eureka	70	18	38	-10	0.24
Tonopah	71	23	45	-9	0.00
Las Vegas	83	48	62	-8	0.00

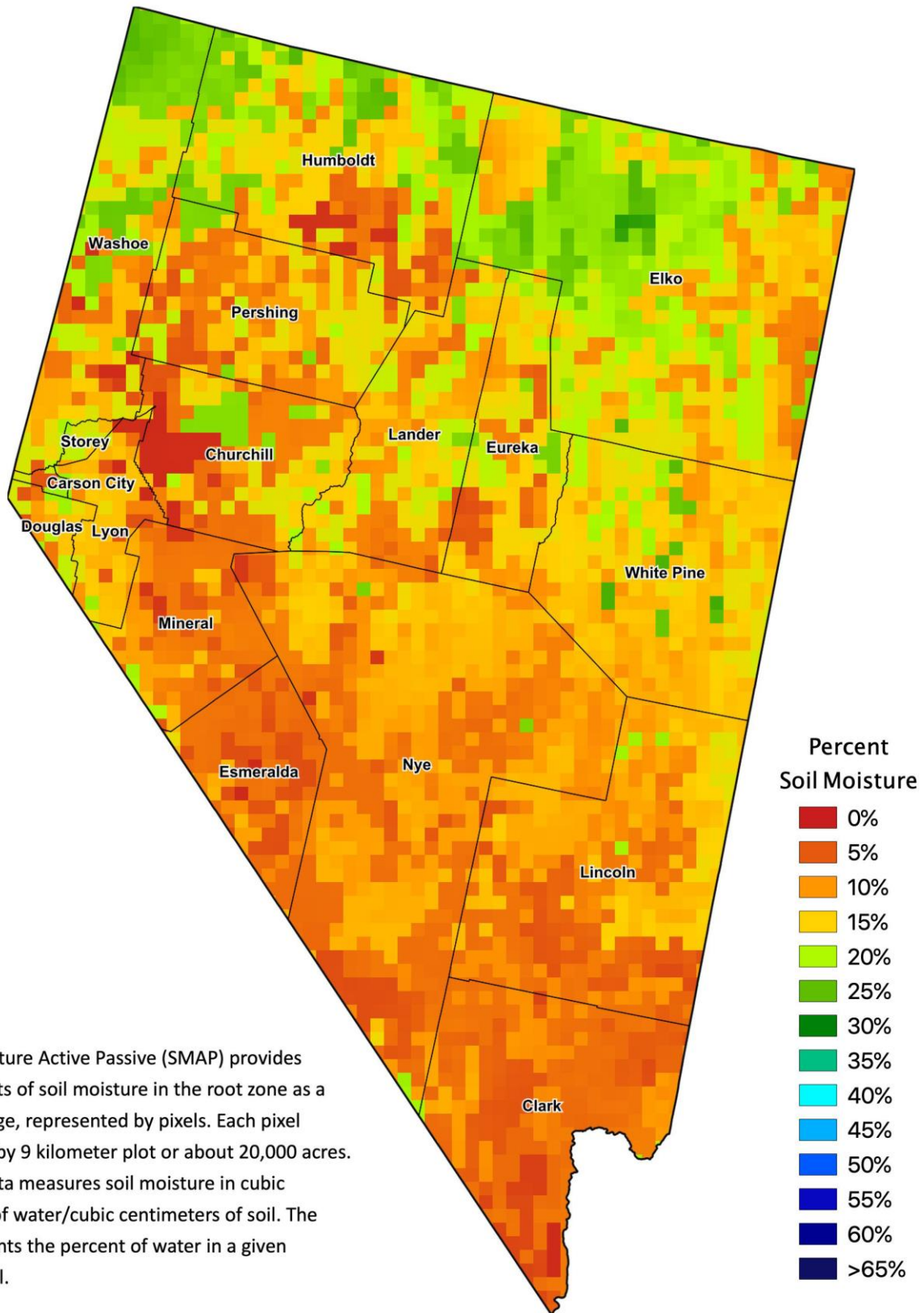
¹ Normal periods 1980-2010 used in departure from normal calculations.

² Rain or melted snow/ice.

Data retrieved from NOAA and NWS. Calculated by USDA NASS.
All rights reserved.



Nevada Soil Moisture Map for the Week of October 4 - 10, 2021



The Soil Moisture Active Passive (SMAP) provides measurements of soil moisture in the root zone as a weekly average, represented by pixels. Each pixel represents 9 by 9 kilometer plot or about 20,000 acres. The SMAP data measures soil moisture in cubic centimeters of water/cubic centimeters of soil. The scale represents the percent of water in a given volume of soil.