



# Nevada Crop Progress & Condition

Pacific Regional Office · 650 Capitol Mall 6-100 · Sacramento, CA 95812-1258 · (916) 738-6600 · [www.nass.usda.gov/nv](http://www.nass.usda.gov/nv)

Week Ending October 10, 2021

Released October 12, 2021

## Weather Summary

The average lows for Nevada ranged from 21 degrees in Ely to 56 degrees in Las Vegas. The average highs ranged from 75 degrees in Ely and Eureka to 89 degrees in Las Vegas. Precipitation for Nevada ranged from 0.03 inches in Eureka, 0.07 inches in Ely and Las Vegas, 0.13 inches in Reno and Winnemucca, and 0.64 inches in Elko.

## Crops Summary

Days Suitable for Fieldwork: 5.4 days. Topsoil Moisture: 15% very short, 10% short, and 75% adequate. Subsoil Moisture: 30% very short, 35% short, and 35% adequate. Pasture and Range Condition: 35% Very Poor, 30% Poor, and 35% Fair.

### Week of 10/04/2021 through 10/10/2021

Station	Temperature				Precipitation <sup>2</sup>
	High	Low	Average	Departure from Normal <sup>1</sup>	
Reno	82	34	57	0	0.13
Elko	81	29	53	3	0.64
Ely	75	21	49	1	0.07
Winnemucca	82	31	56	3	0.13
Eureka	75	26	52	1	0.03
Tonopah	80	33	55	-1	0.00
Las Vegas	89	56	72	-1	0.07

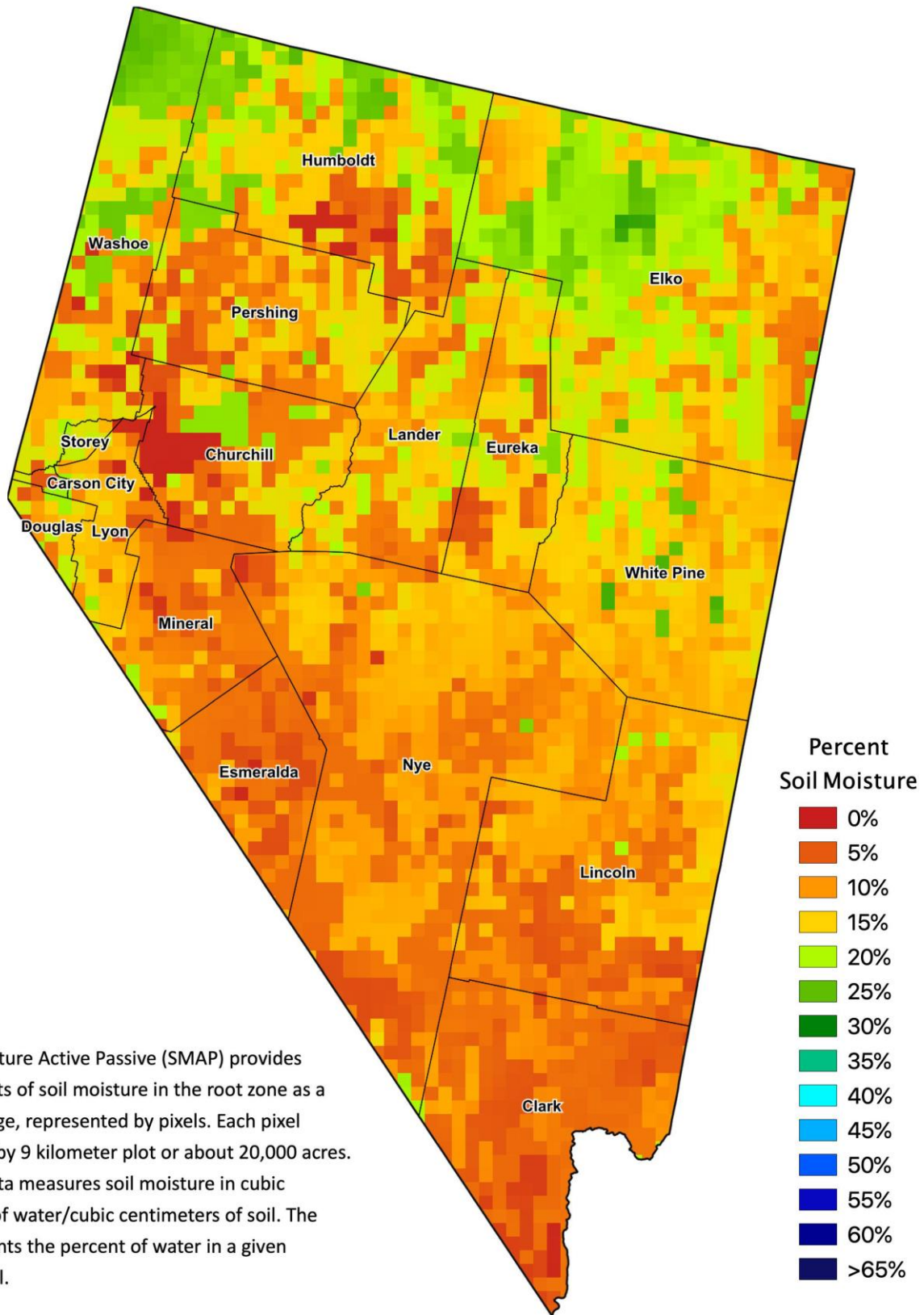
<sup>1</sup> Normal periods 1980-2010 used in departure from normal calculations.

<sup>2</sup> Rain or melted snow/ice.

Data retrieved from NOAA and NWS. Calculated by USDA NASS.  
All rights reserved.



# Nevada Soil Moisture Map for the Week of Sept 27 - Oct 3, 2021



The Soil Moisture Active Passive (SMAP) provides measurements of soil moisture in the root zone as a weekly average, represented by pixels. Each pixel represents 9 by 9 kilometer plot or about 20,000 acres. The SMAP data measures soil moisture in cubic centimeters of water/cubic centimeters of soil. The scale represents the percent of water in a given volume of soil.