



# Nevada Crop Progress & Condition

Pacific Regional Office · 650 Capitol Mall 6-100 · Sacramento, CA 95812-1258 · (916) 738-6600 · [www.nass.usda.gov/nv](http://www.nass.usda.gov/nv)

Week Ending May 23, 2021

Released May 24, 2021

## Weather Summary

The average lows for Nevada ranged from 24 degrees in Ely to 53 degrees in Las Vegas. The average highs ranged from 77 degrees in Eureka to 98 degrees in Las Vegas. Precipitation for Nevada ranged from 0.08 inches in Ely, 0.12 inches in Reno, 0.64 inches in Winnemucca, 1.00 inches in Elko, and 1.18 inches in Eureka.

## Crops Summary

Days Suitable for Fieldwork: 5.1 days. Topsoil Moisture: 5% very short, 10% short, and 85% adequate. Subsoil Moisture: 10% very short, 20% short, and 70% adequate. Pasture and Range Condition: 15% Very Poor, 10% Poor, 70% Fair, and 5% Good.

### Week of 05/17/2021 through 05/23/2021

Station	High	Low	Average	Departure from Normal <sup>1</sup>	Precipitation <sup>2</sup>
Reno	82	36	54	-7	0.12
Elko	79	33	51	-4	1.00
Ely	78	24	48	-4	0.08
Winnemucca	83	32	52	-5	0.64
Eureka	77	30	48	-4	1.18
Tonopah	82	35	54	-6	0.00
Las Vegas	98	53	73	-6	0.00

<sup>1</sup> Normal periods 1980-2010 used in departure from normal calculations.

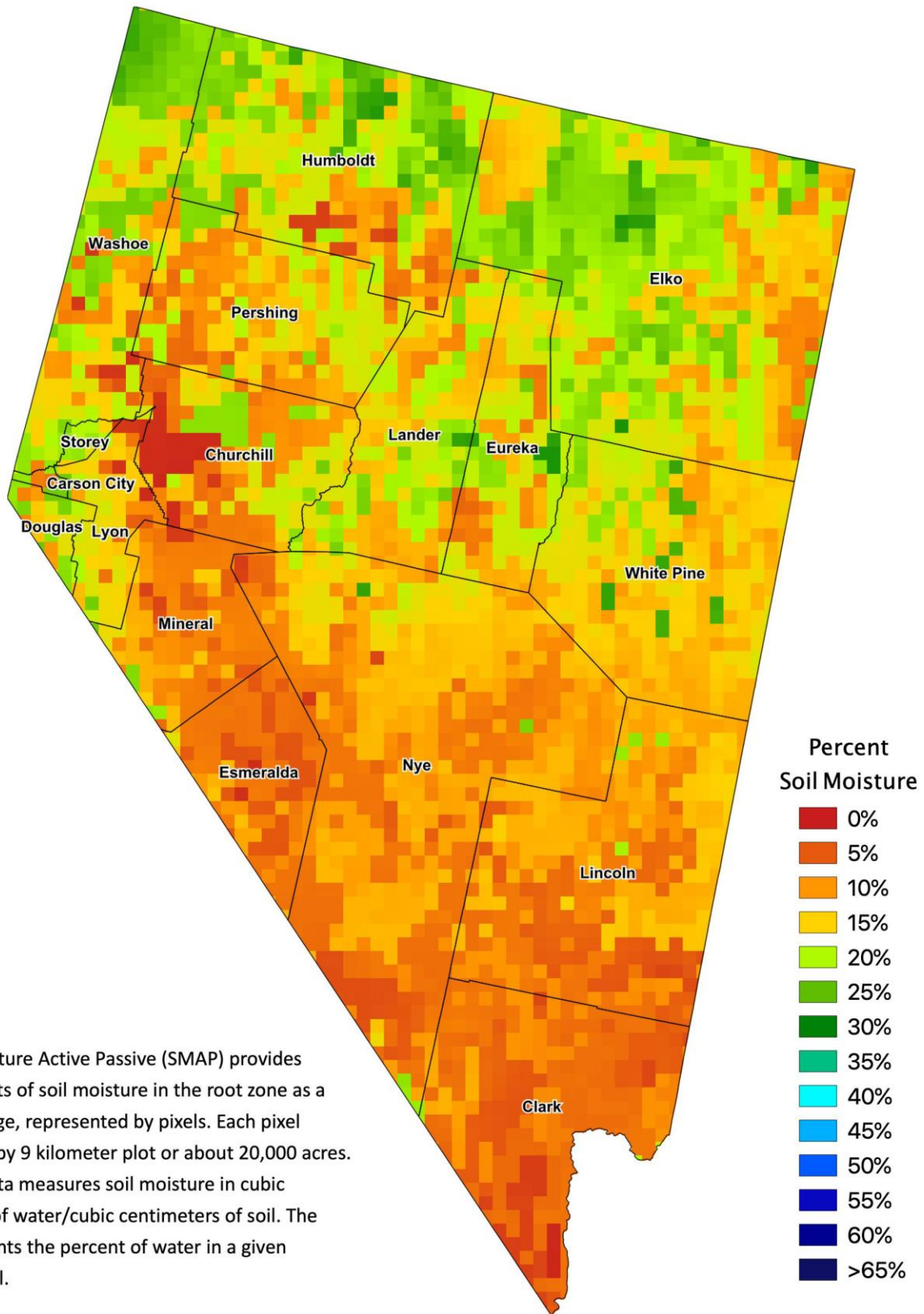
<sup>2</sup> Rain or melted snow/ice.

Data retrieved from NOAA and NWS. Calculated by USDA NASS.

All rights reserved.



# Nevada Soil Moisture Map for the Week of May 10 - 16, 2021



The Soil Moisture Active Passive (SMAP) provides measurements of soil moisture in the root zone as a weekly average, represented by pixels. Each pixel represents 9 by 9 kilometer plot or about 20,000 acres. The SMAP data measures soil moisture in cubic centimeters of water/cubic centimeters of soil. The scale represents the percent of water in a given volume of soil.