

NEVADA

Agricultural Statistics



2003-2004



Beef Prices were at an all time high in 2004.

Cover photo courtesy of:
Nevada Cattlemen's Association and Gallagher Livestock
Auction

Nevada Agricultural Statistics

2004

Nevada Department of Agriculture
Don Henderson, Acting Director

University of Nevada, Reno
College of Agriculture, Biotechnology &
Natural Resources
David Thawley, Dean & Director

Cooperating with
U.S. Department of Agriculture
National Agricultural Statistics Service
Ron Bosecker, Administrator

Compiled by

Nevada Agricultural Statistics Service

P.O. Box 8880, Reno, NV 89507

Phone: 775-972-6001

FAX: 775-972-6002

Toll Free: 1-888-456-7211

Internet Homepage: <http://www.nass.usda.gov/nv/>

Martin J. Owens, Director

Donald R. Gephart, Agricultural Statistician

Benjamin J. Torrance, Agricultural Statistician

Candace L. Lucero, Statistical Assistant

November 2004



OFFICE OF THE GOVERNOR

KENNY C. GUINN
Governor

Dear Nevadans:

Agriculture is one of Nevada's most important industries. Providing food and fiber for the state, our nation and for international export. This industry is critical to the daily sustenance of the citizens of Nevada and our Nation. Recognition of agriculture as a primary target of terrorist attack by the U.S. Department of Homeland Security gives testimony to this fact. We in state government join with federal agencies and private enterprise, not merely to safeguard agriculture, but strive to increase U.S. agricultural values economically and socially throughout the world.

Development and distribution of the statistical material enclosed is made possible by a spirit of cooperation and collaboration between state and federal agencies, educational institutions, and industry participants. It is this kind of interaction between government, industry, and education that will help Nevada and the United States persevere as the great state and nation we are today. I extend my personal gratitude to all who participated in the development of this report.

Sincerely,

A handwritten signature in black ink, appearing to read "Kenny C. Guinn".

KENNY C. GUINN
Governor



Carson City Office:
251 Jeanell Drive, Suite 3
Carson City, NV 89703
(775) 684-5333
Fax (775) 882-5121

Las Vegas Office:
2300 McLeod Street
Las Vegas, NV 89104-4314
(702) 486-4690
Fax (702) 486-4695

DEPARTMENT OF AGRICULTURE

350 Capitol Hill Avenue
Reno, Nevada 89502-2923
Telephone (775) 688-1180 • Fax (775) 688-1178
Website: <http://agri.state.nv.us>

Elko Office:
1351 Elm Street
Elko, NV 89801-3364
(775) 738-8076
Fax (775) 738-2639

Winnemucca Office:
1200 E. Winnemucca Blvd.
Winnemucca, NV 89445-2999
(775) 623-6502
Fax (775) 625-1200

To Friends of Agriculture:

Agriculture, the production of food and fiber, is the foundation of every nation in the world. If a nation or country does not have the ability to produce the crops and food products to feed and cloth its citizens, then that nation cannot prosper and is at risk of collapse. That has been evident throughout history and remains obvious today when one considers the challenges facing many third world countries. The United States is extremely fortunate in having one of the largest, most productive and safest agricultural industries in the world. We in Nevada are proud to be an important part of the U.S. agricultural industry.

The information contained in this statistical compilation, both past and present, should be useful to citizens, industry and governmental policy makers in determining the scope of agriculture in Nevada today and its trend over time in the face of large climatic swings and shifts in socio-economic perceptions. These past and ongoing trends highlight the adaptability, diligence and resourcefulness of Nevada's Agricultural producers.

The Nevada Department of Agriculture is pleased to contribute to this issue of Nevada Agricultural Statistics and extends our appreciation to the agricultural community for their continued support and contribution to this valuable effort.

Sincerely,

Don Henderson
Director





Nevada Agricultural Statistics Service

P.O. Box 8880, Reno, Nevada 89507-8880

FAX (775) 972-6002 www.nass.usda.gov/nv Phone (775) 972-6001

Nevada Department of Agriculture

USDA-NASS

University of Nevada, Reno

To Our Readers:

I hope you enjoy this edition of Nevada Agricultural Statistics, our annual compilation of statistics on Nevada, its agriculture, and its rural communities. This book is a product of Nevada Agricultural Statistics Service in cooperation with Nevada Department of Agriculture and University of Nevada Reno College of Agriculture, Biotechnology, and Natural Resources. The mission of Nevada Agricultural Statistics Service is to provide meaningful, accurate, and objective statistical information and services and this publication is a significant step toward fulfillment of this mission.

The preparation of Nevada Agricultural Statistics is made possible through the cooperation and support of Nevada's farmers, ranchers, and agricultural business operators. Several surveys are conducted each year to monitor agricultural activity and Nevada's agriculturalists have been extremely helpful and gracious in providing the information needed.

Included in this publication are data on state level agricultural production, disposition, and value for the ten year period 1994-2003, and county estimates for 2002 and 2003. This information portrays the size, diversity, and trends of specific commodities and agriculture in general in our State. Also included are demographic statistics about Nevada's farmers and ranchers from the most recent Census of Agriculture; the 1992 census.

Reports issued by our office and links to other sites related to Nevada agriculture are available on the web at www.nass.usda.gov/nv/. I welcome any questions regarding these statistics and await the opportunity to assist you with any additional data needs.

Sincerely,

A handwritten signature in cursive script, appearing to read "Martin J. Owens".

Martin J. Owens
Director

TABLE OF CONTENTS

General

Nevada Facts and Figures	6
Farm Operators by Age	7
Farm Operators by Sex	8
Farms Operated by Specified Racial Groups	8
Tenure of Operators	9
Number of Days Worked Off-Farm	9
Number of Farms and Land in Farms	10
Number of Farms by County	11
Farm Production by County	12
Cash Receipts from Farm Marketings	13
Value Added to the U.S. Economy	14
Prices Received	15
Crop/Weather Summary	16
Climatological Data	18
Average Value of Farm Real Estate	41
Farm Labor and Wage Rates	42

FIELD CROPS

Annual Crop Summary	21
Record Highs and Lows	22
Winter Wheat: Acreage, Yield, Prod.	23
Spring Wheat: Acreage, Yield, Prod.	24
Barley: Acreage, Yield, Production	25
Corn Silage	25
Hay: Acreage, Yield, Production	26
Hay Stocks on Farms	27
Hay Production by County	28
Hay Exported to California	29

SPECIALTY CROPS

Alfalfa Seed: Acreage, Yield, Prod.	30
Onions: Acreage, Yield, Prod.	31
Garlic: Acreage, Yield, Prod.	31
Potatoes: Acreage, Yield, Prod.	32
Mint: Acreage, Yield, Prod.	32

LIVESTOCK - GENERAL

Number of Farms with Livestock	12
Record Highs and Lows	22
Honey Production	38

CATTLE

Inventory, Supply and Disposition	33
Production and Income	34
Inventory by County	34
Number on Feed	34

SHEEP AND LAMBS

Inventory, Supply and Disposition	35
Production and Income	36
Inventory by County	36
Wool Production and Value	36

HOGS AND PIGS

Inventory, Supply, and Disposition	37
Production and Income	37

DAIRY AND DAIRY PRODUCTS

Milk Cows, Production, and Milkfat	39
Milk Utilization and Returns	39
All Milk Prices	40
Cows Milked, Production by Quarter	40
Milk Cows and Production by County	40

PESTICIDE AND HERBICIDE USE

Aerial and Ground Application	43
-------------------------------	----

DIRECTORY

Cooperative Extension and Farm Services Agency (FSA) Directory	51
Natural Resources Conservation Service (NRCS) and Nevada Department of Agriculture Directory	52

STATE STATISTICAL OFFICES

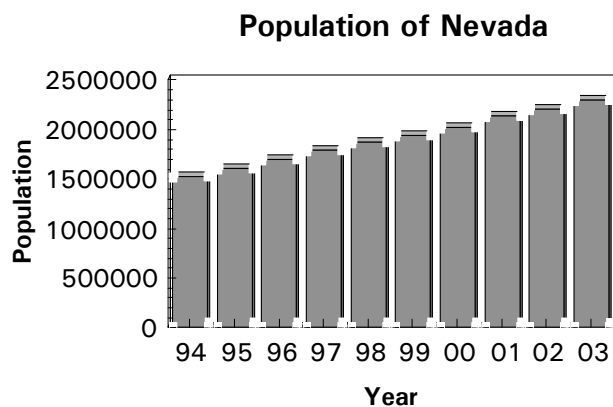
State, Telephone, Address	53
---------------------------	----

NEVADA FACTS AND FIGURES

Population of Nevada's Counties and Incorporated Cities, July 1, 1990-2003 ^{/1}

County	1999	2000	2001	2002	2003
Carson City	52,624	53,208	54,171	54,844	55,220
Churchill	24,132	24,157	24,928	25,116	25,808
Clark	1,327,145	1,394,440	1,485,855	1,549,657	1,620,748
Douglas	40,847	41,674	43,450	44,212	45,603
Elko	45,727	45,633	46,668	46,577	45,805
Esmeralda	1,036	1,061	1,038	1,125	1,116
Eureka	1,726	1,651	1,506	1,384	1,420
Humboldt	17,103	16,197	16,164	16,308	16,457
Lander	6,199	5,794	5,761	5,547	5,277
Lincoln	4,134	4,165	3,861	3,879	3,749
Lyon	33,916	35,685	37,329	38,777	41,244
Mineral	5,338	5,071	4,743	4,695	4,687
Nye	31,454	32,978	34,384	35,039	36,651
Pershing	7,035	7,057	6,873	6,937	6,967
Storey	3,582	3,491	3,714	3,639	3,736
Washoe	334,601	341,935	353,271	359,423	373,233
White Pine	9,767	9,181	8,783	8,863	8,842
Total	1,946,336	2,023,378	2,132,498	2,206,022	2,296,566

^{/1} Source: Nevada Department of Taxation and Nevada State Demographer, University of Nevada, Reno.



Nevada has been the fastest growing state in the Nation for the past several years. Projections by the Nevada State Demographer's Office indicate the State population will likely double in the next 20 years. Over two-thirds of Nevada's population is concentrated in largely urbanized Clark County, where the population of Las Vegas and commuting areas has skyrocketed. Population growth in rural Nevada has been much less dramatic, and in some areas has shown decline.

CENSUS OF AGRICULTURE

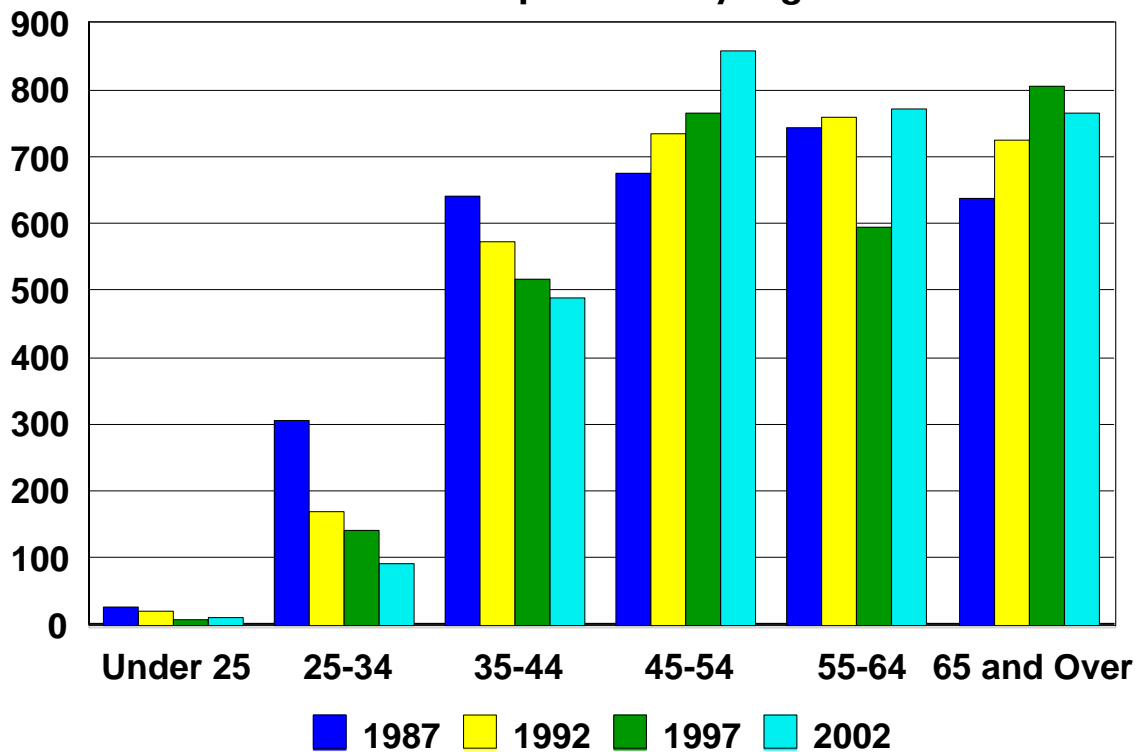
The next several pages of this publication contain information on Nevada farmers and ranchers taken from the most recent Census of Agriculture. The Census contains a wealth of information on the demographics of farm operators not found elsewhere.

- The Census of Agriculture is a complete accounting of United States agricultural production.
- The Census is the only source of uniform, comprehensive agricultural data for every county in the Nation.
- The Census includes as a farm every place from which \$1,000 or more of agricultural products were produced and sold or normally would have been sold during the census year.
- The Census of Agriculture is taken every five years covering the years ending in "2"; and "7."

FARM OPERATORS BY AGE: Nevada, 1987, 1992, 1997, 2002

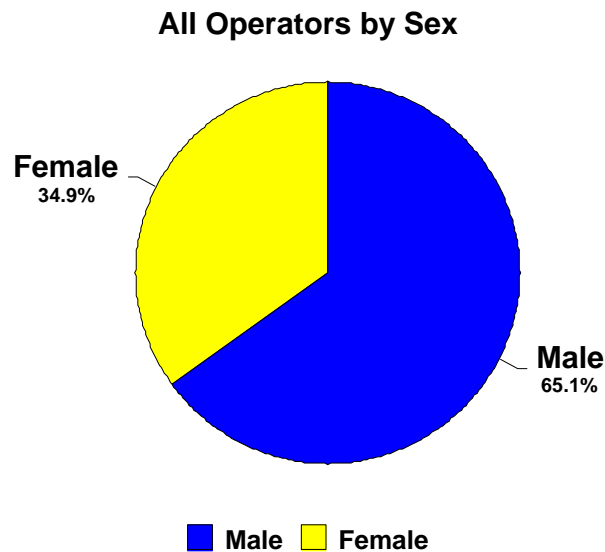
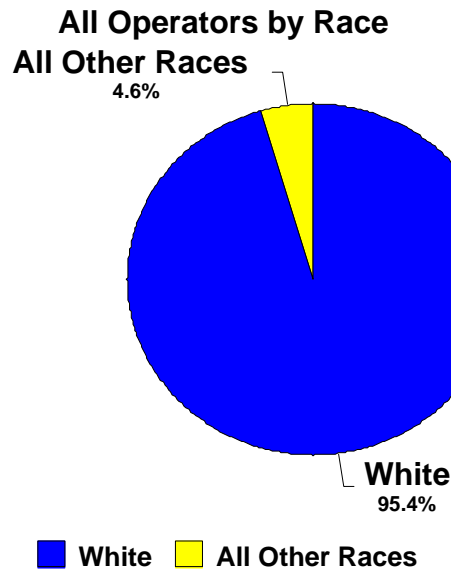
	1987	1992	1997	2002	
Age	Number	Number	Number	Number	Percent
Under 25	27	20	8	11	.4%
25-34	305	169	141	93	3.1%
35-44	641	573	516	490	16.4%
45-54	674	734	766	857	28.7%
55-64	742	758	594	772	25.8%
65 and over	638	726	804	766	25.6%
Total	3,027	2,980	2829	2,989	100.0%

Farm Operators by Age



OPERATOR COUNTS BY RACE AND SEX: Nevada, 2002

2002 Census of Agriculture						
Race	Total Operators		Male Operators		Female Operators	
	All Operators	Principal Operators	All Operators	Principal Operators	All Operators	Principal Operators
All Races	4,825	2,989	3,140	2,472	1,685	517
White	4,605	2,865	2,999	2,372	1,606	493
American Indian	151	85	96	67	55	18
Black	17	7	10	7	7	0
Asian	12	4	5	4	7	0
Pacific Islander	6	4	4	4	2	0
More than one race reported	34	24	26	18	8	6



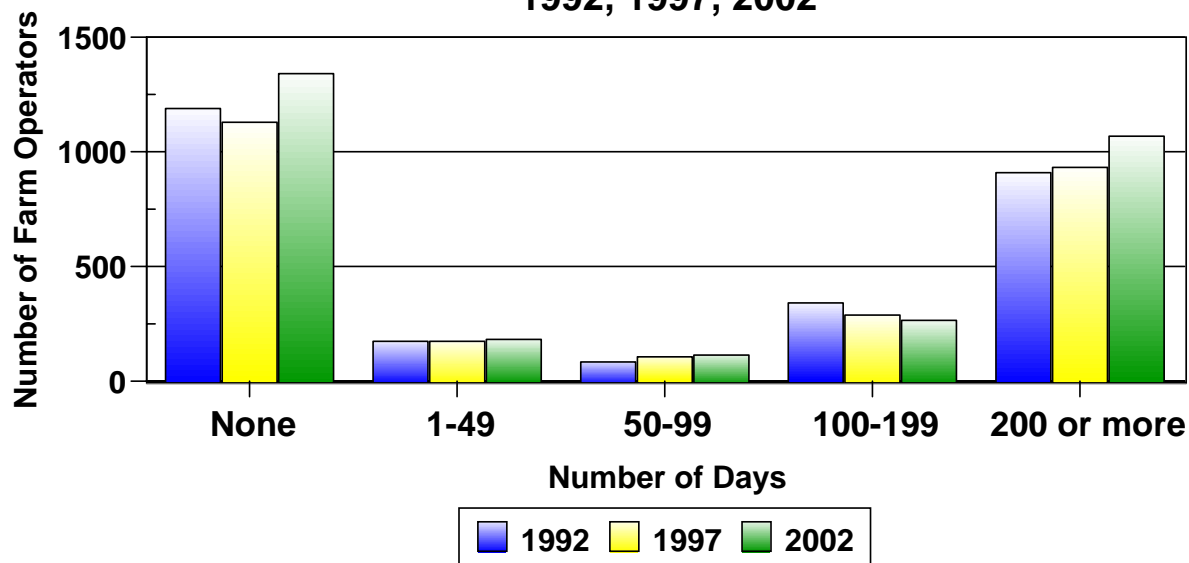
TENURE OF OPERATORS: Nevada, 1992, 1997, and 2002

<i>Tenure</i>	1992		1997		2002	
	<i>Number</i>	<i>Percent</i>	<i>Number</i>	<i>Percent</i>	<i>Number</i>	<i>Percent</i>
All Farms	2,890	--	2,829	--	2,989	--
Full Owners	2,110	73.0%	2,095	74.1%	2,354	78.8%
Part Owners	509	17.6%	492	17.4%	458	15.3%
Tenants	271	9.3%	242.0%	8.5%	177.0%	5.9%

NUMBER OF DAYS WORKED OFF FARM: Nevada, 1992, 1997, and 2002

<i>Number of Days</i>	1992		1997		2002	
	<i>Number</i>	<i>Percent</i>	<i>Number</i>	<i>Percent</i>	<i>Number</i>	<i>Percent</i>
None	1,192	41.2%	1,131	40.0%	1,345	44.9%
1-49	178	6.2%	178	6.3%	185	6.2%
50-99	88	3.0%	109	3.9%	117	3.9%
100-149	342	11.8%	292	10.2%	268	9.0%
200 or more	910	31.5%	939	33.2%	1,074	35.9%
Not Reported	180	6.2%	183	6.5%	--	--

**Number of Farm Operators
by Number of Days Worked Off Farm
1992, 1997, 2002**



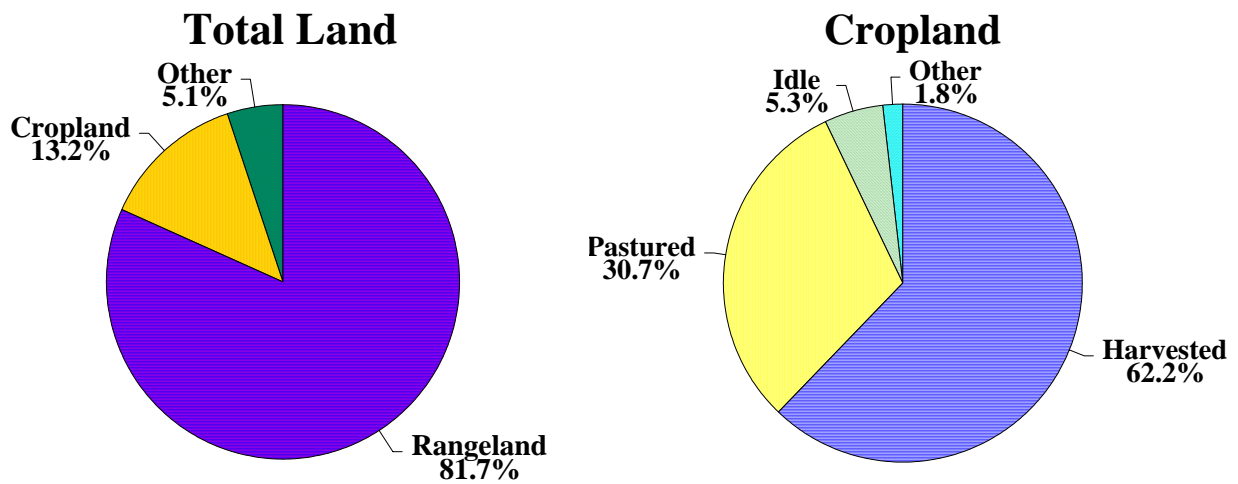
NUMBER OF FARMS AND LAND IN FARMS AND RANCHES: 1994-2003 ¹

Year	Nevada			United States		
	Number of Farms	Average Size of Farms	All Land in Farms	Number of Farms	Average Size of Farms	All Land in Farms
	Actual #	Acres	000 Acres	000's	Acres	000 Acres
1994 ²	3,100	2,258	7,000	2,198	440	965,935
1995	3,000	2,333	7,000	2,196	438	962,515
1996	3,000	2,300	6,900	2,191	438	958,675
1997	3,000	2,300	6,900	2,191	436	956,010
1998	3,150	2,032	6,400	2,192	434	952,080
1999	3,150	2,032	6,400	2,187	434	948,460
2000	3,100	2,065	6,400	2,167	436	945,080
2001	3,050	2,066	6,300	2,149	438	942,070
2002	3,000	2,100	6,300	2,135	440	940,300
2003	3,000	2,100	6,300	2,127	441	938,750

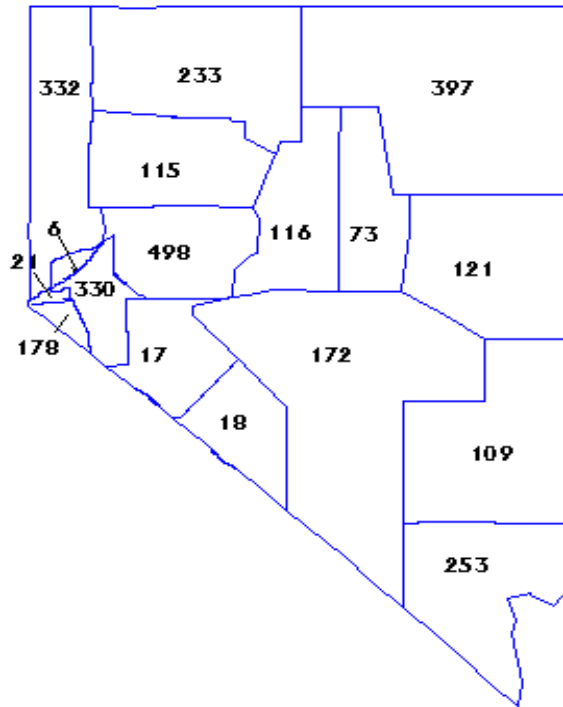
¹ Farm is defined as a place with annual sales of agricultural products of \$1,000 or more.

² Farm numbers and land in Farms will be subject to revision pending results of the 2002 Census of Agriculture.

**Utilization of Land in Farms and Ranches
Nevada, 2002**



NUMBER OF FARMS BY COUNTY: Nevada 2002¹



NUMBER OF FARMS BY COUNTY: Nevada, 2002¹

County/State	Number of Farms	Land in Farms in Acres	Average Farm Size in Acres
Carson City	21	4,382	209
Churchill	498	149,487	300
Douglas	178	210,952	1,185
Humboldt	233	761,109	3,267
Lyon	330	226,449	686
Pershing	115	131,103	1,140
Storey	6	90	15
Washoe	332	802,042	2,416
Elko	397	2,472,143	6,227
Eureka	73	266,427	3,650
Lander	116	620,292	5,347
White Pine	121	203,106	1,679
Clark	253	68,925	272
Esmeralda	18	(D)	(D)
Lincoln	109	(D)	(D)
Mineral	17	(D)	(D)
Nye	172	97,601	567
State	2,989	6,330,622	2,118

¹ 2002 Census of Agriculture Vol. 1 Geographic Area Series Part 28, Nevada State and County Data
(D) Withheld to avoid disclosing data for individual farms.

NUMBER OF FARMS WITH LIVESTOCK: Nevada and United States, 1994-2003 ¹

Year	Nevada				United States			
	Cattle	Milk	Sheep	Hogs	Cattle	Milk	Sheep	Hogs
	----- Actual Number -----				-----1,000's -----			
1994	1,700	200	350	140	1,197.3	148.1	86.0	196.0
1995	1,700	200	350	140	1,190.6	139.6	79.9	168.4
1996	1,700	200	350	140	1,176.7	130.9	76.6	142.3
1997	1,700	150	350	110	1,148.0	123.7	72.6	122.2
1998	1,700	150	300	110	1,114.6	117.1	68.5	113.6
1999	1,700	150	300	100	1,095.5	110.8	66.8	96.6
2000	1,700	150	300	100	1,076.3	105.0	66.1	87.5
2001	1,700	150	300	100	1,049.1	97.4	65.1	81.2
2002	1,700	130	300	110	1,036.4	91.2	68.1	76.2
2003	1,600	120	300	110	1,013.6	86.3	67.6	73.6

¹ Estimated number of farms with one head or more of species.

SUMMARY OF FARM PRODUCTION BY COUNTY: Nevada 2002

County	Market Value of Ag Products Sold	Total Farm Production ¹	Net Cash Farm Income
	----- 1,000 Dollars -----		
Churchill	50,615	46,610	6,448
Clark	17,003	17,364	(270)
Douglas	9,132	14,183	(4,142)
Elko	45,311	39,753	7,880
Esmeralda	(D)	3,630	(D)
Eureka	12,659	9,646	(D)
Humboldt	54,949	48,573	9,165
Lander	20,615	15,831	5,273
Lincoln	11,451	7,276	3,945
Lyon	74,471	53,474	25,591
Mineral	3,075	1,537	1,492
Nye	22,420	19,362	2,658
Pershing	25,708	23,344	4,247
Storey	(D)	90	(D)
Washoe	17,780	20,923	(1,072)
White Pine	76,025	12,609	(D)
Carson City	928	1,233	(D)
State	446,989	335,437	128,806

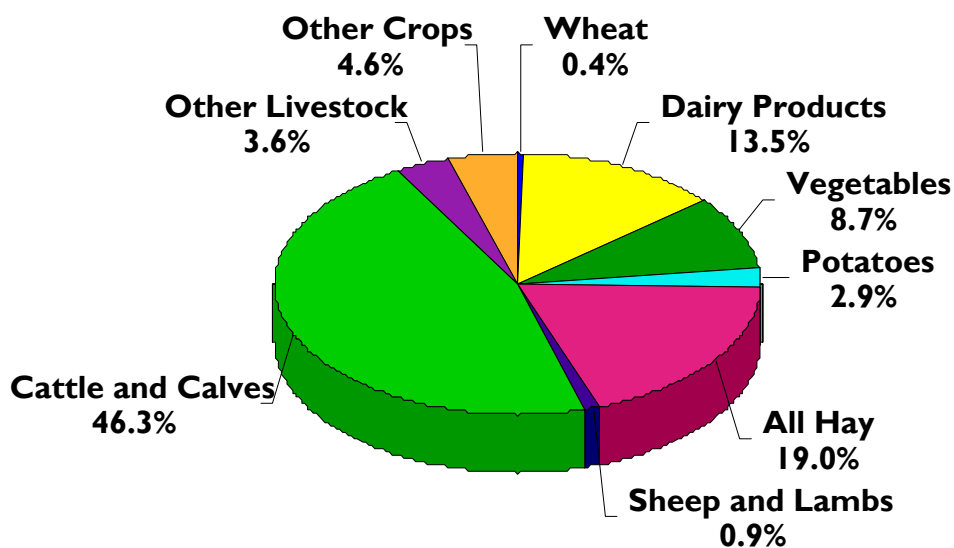
¹ Data based on a sample of farms. 2002 Census of Agriculture Vol. 1, Geographic Area Series Part 28, Nevada State and County Data

CASH RECEIPTS FROM FARM MARKETINGS: By Commodities, Nevada 2001-2003¹

Item	2001		2002		2003	
	Million	Percent	Millions	Percent	Millions	Percent
Cattle & Calves	192.5	45.3%	142.5	39.4%	182.7	46.2%
Dairy Products	62.3	14.7%	52.9	14.6%	53.6	13.5%
Sheep & Lambs	3.1	0.7%	2.9	0.8%	3.8	0.9%
All other Livestock & Products	13.9	3.3%	14.8	4.1%	14.2	3.6%
Total Livestock & Products	271.8	63.4%	213.1	58.9%	254.3	64.2%
Wheat	1.8	0.3%	1.3	0.4%	1.7	0.4%
All Hay	95.4	22.4%	89.3	24.7%	75.1	18.9%
Vegetables	19.6	4.6%	28.5	7.9%	34.3	8.7%
Potatoes	12.3	2.9%	11.7	3.2%	11.7	2.9%
All Other Crops	24.3	5.7%	17.8	4.9%	18.7	4.6%
Total Crops	153.4	35.9%	148.4	41.1%	141.5	35.9%
Total All Commodities	425.2	100.0%	361.5	100.0%	395.8	100.0%

¹ Totals may not add due to rounding

**Cash Receipts from Farm Marketings
Nevada, 2003**



VALUE ADDED TO THE U.S. ECONOMY BY THE AGRICULTURAL SECTOR: Nevada, 1999-2003

The value-added format is now used to present the income accounts, replacing the traditional net farm income format. The underlying accounting concepts are the same under both formats and the value for net farm income is identical. Changes in commodity production is the cause of most of the volatility in the income accounts, and the presence of more disaggregated components under the value-added format makes it much easier to discern what forces are driving the changes and trends in farm income. In addition, the value-added approach to the sector accounting has the advantage of being the format accepted and utilized internationally, thereby enabling comparison across countries.

Item	1999	2000	2001	2002	2003
	----- <i>(Thousand Dollars)</i> -----				
Final Agricultural Sector Output ¹	394,337	452,112	443,381	432,206	454,391
Final Crop Output	122,890	161,350	147,635	149,564	142,154
Home Consumption	355	374	393	374	163
Value of Inventory Adjustment ²	(2,975)	10,901	(6,163)	570	516
Crops	125,510	150,075	153,405	148,620	141,475
Final Animal Output	219,857	237,785	256,467	219,871	254,117
Home Consumption	903	589	275	262	430
Value of Inventory Adjustment	6,722	0	(15,613)	6,437	(640)
Livestock and Products	212,232	237,196	271,805	213,172	245,327
Service and Forestry	51,590	52,977	39,278	62,772	58,121
Gross Imputed Rental Value of Farm Dwelling	38,639	41,882	27,019	40,961	37,544
Net Government Transactions	(7,977)	(7,413)	(5,233)	(370)	846
Direct Government Payments	2,676	3,918	5,864	11,121	11,931
Farm Origin Outlays	66,376	73,205	74,060	78,327	78,082
Feed Purchased	31,795	33,565	31,222	41,218	36,119
Livestock and Poultry Purchased	27,784	32,874	36,195	27,514	33,273
Seed Purchased	6,797	6,766	6,643	9,595	8,690
Manufactured Inputs	46,668	52,379	53,388	58,845	55,603
Fertilizers and Lime	12,491	11,606	11,883	12,588	12,775
Pesticides	6,385	1,028	7,094	8,035	7,853
Petroleum Fuel and Oils, Electricity	27,792	33,745	34,411	38,222	34,975
Other Intermediate Expenses	60,215	71,359	65,389	93,705	57,538
Repair and Maintenance of Capital Items	21,691	22,384	20,831	22,219	21,426
Capital Consumption	46,663	47,479	48,870	49,749	49,331
Factor Payments	71,757	77,315	75,103	78,102	79,190
Net Rent Received by Nonoperator Landlord	2,128	2,584	3,009	3,262	3,647
Employee Compensation (Total Hired Labor)	51,197	54,826	54,078	55,013	55,333
Real Estate and Non Real Estate Interest	18,432	19,905	18,016	19,827	20,120
Net Farm Income ¹	72,989	100,578	100,507	87,056	110,734

Source: Economic Indicators of the Farm Sector, State Financial Summary, USDA-ERS.

¹Final sector output is the gross value of the commodities and services produced within a year.

Net value-added is the sector's contribution to the National economy and is the sum of the income from production earned by all factors-of-production.

Net farm income is the farm operator's share of income from the sector's production activities. The concept presented is consistent with that employed by the Organization for Economic Cooperation and Development.

²A positive value of inventory change represents current-year production not sold by December 1. A negative value is an offset to production from prior years included in current-year sales.

PRICES RECEIVED FOR SPECIFIED PRODUCTS: By Month, Nevada, 1999-2003

Year	Jan.	Feb.	Mar.	Apr.	May	Jun.	Jul.	Aug.	Sept.	Oct.	Nov.	Dec.
	----- (Dollars Per Cwt.) -----											
Steers and Heifers												
1999	71.70	69.90	74.50	75.30	67.70	77.10	77.20	77.00	78.70	74.10	77.70	77.10
2000	87.10	88.60	86.30	83.50	83.70	86.90	84.20	85.10	88.80	100.80	91.50	88.60
2001	85.70	86.40	84.80	86.50	86.40	88.20	90.10	86.20	87.20	92.00	97.00	105.40
2002	81.00	84.40	85.00	80.80	70.20	76.30	72.30	74.20	75.50	78.50	86.10	84.80
2003	79.40	76.20	84.90	82.50	83.10	77.90	85.30	88.10	93.60	98.30	102.00	105.00
Cows												
1999	33.50	34.60	36.30	35.70	36.20	35.50	36.50	36.00	34.50	33.80	33.10	34.50
2000	53.60	34.80	35.40	37.30	38.20	39.80	41.00	38.50	35.80	33.30	37.90	37.90
2001	36.90	35.80	36.40	40.10	35.00	39.30	44.90	42.30	39.00	34.10	31.10	31.80
2002	30.80	30.70	33.00	38.10	36.70	37.00	35.40	35.60	33.30	35.80	34.80	34.40
2003	34.00	37.70	39.50	40.50	39.40	40.50	39.90	46.30	45.10	45.70	49.60	41.60
Calves												
1999	82.70	82.10	88.80	82.50	83.90	91.70	93.40	92.50	90.90	87.20	87.60	89.60
2000	97.60	108.40	110.50	110.20	90.30	109.00	110.60	111.90	108.00	108.80	113.50	113.80
2001	114.00	133.00	123.80	114.50	102.80	103.20	102.40	103.40	102.80	107.30	110.40	93.00
2002	97.40	96.80	93.30	95.30	95.50	95.30	95.80	96.30	96.60	91.30	90.70	96.00
2003	98.00	96.20	94.30	92.30	101.00	102.30	105.50	108.30	112.00	110.00	112.00	119.00
	----- (Dollars per Ton) -----											
Alfalfa Hay												
1999	100.00	89.00	80.00	75.00	72.00	67.00	91.00	87.00	84.00	82.00	86.00	81.00
2000	81.00	83.00	84.00	83.00	82.00	90.00	96.00	90.00	93.00	92.00	92.00	92.00
2001	97.00	94.00	90.00	100.00	99.00	101.00	111.00	108.00	110.00	119.00	122.00	118.00
2002	117.00	117.00	112.00	104.00	108.00	110.00	104.00	102.00	98.00	100.00	101.00	97.00
2003	94.00	95.00	90.00	93.00	96.00	100.00	95.00	89.00	88.00	93.50	87.00	91.00
Other Hay												
1999	85.00	65.00	87.00	80.00	70.00	69.00	81.00	76.00	80.00	76.00	80.00	80.00
2000	80.00	83.00	86.00	83.00	85.00	96.00	92.00	100.00	100.00	98.00	97.00	103.00
2001	103.00	102.00	102.00	99.00	100.00	100.00	104.00	110.00	115.00	116.00	125.00	125.00
2002	123.00	121.00	117.00	112.00	111.00	108.00	111.00	115.00	113.00	112.00	110.00	105.00
2003	100.00	100.00	95.00	90.00	90.00	95.00	120.00	128.00	111.00	105.00	118.00	103.00
All Hay												
1999	99.00	87.00	81.00	76.00	72.00	67.00	90.00	86.00	84.00	81.00	85.00	81.00
2000	81.00	83.00	84.00	83.00	82.00	91.00	96.00	91.00	94.00	93.00	93.00	93.00
2001	98.00	95.00	91.00	100.00	99.00	101.00	111.00	108.00	110.00	119.00	122.00	119.00
2002	118.00	117.00	113.00	105.00	108.00	110.00	105.00	103.00	100.00	101.00	102.00	98.00
2003	95.00	96.00	91.00	92.00	95.00	100.00	97.00	92.00	90.80	95.00	90.00	93.00

2003 CROP/ WEATHER SUMMARY



January: January was very warm for Nevada with several areas recording record high mean temperatures for the month. Only limited precipitation fell in scattered showers throughout the month. Snow accumulations in the Sierra Nevada remain above normal, but the rest of the State was lagging significantly. Calving was getting underway and some lambing and kidding was noted. Marketing of bred cows and heavy calves was underway. Hay marketing and shipping continued. Fall seeded grains and garlic were in generally good condition. Winter livestock feeding was minimal due to the open weather.

February: A split jet stream rested over Nevada for much of the month, pushing storms to the north and the south. Precipitation was much below normal for most of the State, with the notable exception of Las Vegas which had above normal precipitation for the month. Concerns over irrigation water supplies heightened as the water content of winter snow pack remained below normal in all primary watersheds. Western watersheds were near normal for snow pack, but much of the East had less than half of normal. Calving was underway during the month, as was farm flock lambing and kidding. Marketing of yearling cattle was active and bull sales were busy. Hay shipments to dairy and equine accounts continued. Fall seeded grains, though limited, were wintering well. Garlic fields were in good condition. Shipments of onions from storage ended. Winter livestock feeding demands were minimized by lack of snowfall.

March: Mild weather persisted through March, heightening concerns over seasonal water supplies. Precipitation totals were generally less than an inch across the State, .2 to .6 inch below normal. Temperatures average 1 to 2 degrees above normal. Snotel measurements showed the water content of the winter snow pack at 55 to 85 percent of normal with the eastern part of the State in the worse shape. The mild weather was good for calving and lambing which picked up during the month. Calving was in full swing during March and branding was getting underway. Some sheep flocks were shorn and lambing began. Notable bull sales were held during the month and marketing of yearling cattle was active. Shipping of baled and cubed hay continued. Potato processing was ongoing. Fall seeded grains and garlic were in good condition. Field preparations and spring grain planting got underway. Onions were planted and sprinkler irrigation was underway.

April: April was a cool, wet month for northern Nevada as several storms passed through the State. Precipitation totals exceeded normal for all but the South and winter snow accumulations in the northern mountains increased significantly. Temperatures generally averaged slightly below normal. The month was also quite windy. Crop emergence and plant growth was slow due to cool weather. Spring grain planting progressed between rains. Calving, lambing, shearing, and branding were ongoing. Seasonal greening of pastures and range advanced and livestock were being moved to low elevation grazing.

May: Nevadans experienced greatly varied weather during May. The month began colder than normal with rains in the lowlands and snow at higher elevations. Precipitation tallied above normal in northern and eastern Nevada, but below normal in the west and south. High pressure moved into the State near mid-month bringing much higher temperatures. Record high temperatures were recorded near the end of the month. Widespread rains improved range and pasture conditions and cattle were being turned out on summer range. Forage growth accelerated with warmer weather during the second half of the month. Surface irrigation water supplies remained very short for the Lovelock valleys where irrigation commenced. Spring grain seeding was completed. Corn, potato, and cantaloup planting was underway. Sprinkler irrigation of onions continued. Garlic growth and condition were good. Alfalfa broke dormancy in northern valleys.

June: June was hotter and drier than normal across the entire state. Reno recorded the warmest weather since records began in 1888. The average minimum temperature for Reno was 8 ½ degrees above normal. Thundershowers late in the month dropped significant precipitation in the Reno area but most of the State experienced very little rainfall. High temperatures promoted crop growth and increased irrigation demands. The first cutting of alfalfa hay neared completion and the second cut got underway in early valleys toward the end of the month. Some fields were growing dry in Lovelock due to lack of surface water. Corn and potato planting was completed. Wheat and barley fields were heading and began turning color by the end of the month. Ranges and pastures dried somewhat, but remained in generally good condition. Grasshoppers and Mormon crickets were active with some bad infestations in the north.

2003 CROP/ WEATHER SUMMARY cont.

July: The weather was hot during the month and several record high temperatures were recorded. July 2003 was the warmest July on record for Reno since temperature records began in 1888. Afternoon thundershowers provided some relief from the heat, and some areas received significant precipitation. Elko recorded .92 inch of rain, .62 inch above normal for the month. Stream flows diminished as the snow pack wore thin. The warm weather spawned crop growth. Alfalfa first cutting was completed and second cutting was in full swing. Meadow hay cutting got underway. Grass seed harvest was underway. Grains were ripening. Potato fields were blooming.

Grasshoppers and Mormon crickets were damaging some northern Nevada ranges.

August: Thundershowers early in the month provided significant precipitation to some parts of the North, but missed many others. Northeastern Nevada continued to experience a very dry summer. Water supplies for irrigation ran short in some areas and dry range conditions forced some livestock movement. Alfalfa second cutting continued and some cut hay was damaged by rains. Third cutting got underway late in the month. Grain hay harvest was also interrupted by rains. Seed crop harvests began. Garlic harvest was underway. Mint harvest began. Some calves were weaned early in northern Humboldt County due to drought.

September: High pressure dominated the weather in northern Nevada, keeping temperatures high and precipitation sparse. Temperatures averaged well above normal toward the end of the month. Reno recorded record high temperatures on the 23rd, 24th, 27th, and 28th. Thundershowers broke through in the South. Las Vegas got rain on 5 days which accumulated to .83 inch, nearly twice normal for the month. Hay harvest continued with the third cutting and fourth cuttings of alfalfa. Alfalfa seed harvest continued, followed by field burning. Other hay harvest continued. Mint distilling was underway in Orovada. Potato harvest was in full swing. Small grain harvest was completed and fields were being prepared for fall planting. Onion harvest was active. Range and pasture condition remained mostly good with some excellent ranges in the northeast. Some cattle were moved to fall pastures and weaning was underway.

October: Storms reached Nevada only at the beginning and the end of the month as strong high pressure was predominant. Many record high temperatures were recorded during the month. Precipitation totals were way below normal. Hay harvest continued with the fourth cutting of alfalfa advancing in the North and later cuttings active in the South. Small grain seeding was completed. Potato harvest continued. Mint distilling continued. Calves were being shipped and cows moved to winter stations.

November: Temperatures turned sharply colder in November as several mild storm systems passed over the State. Average temperatures statewide were about 20 degrees below the October averages. Accumulated precipitation varied greatly depending on storm patterns. Las Vegas recorded .61 inch of rain bolstered by .49 inch falling on the 12th. Hay shipping was active. Potato processing and onion shipping were also active. Calves continued to move to market. Herds were grazing crop aftermath.

December: December saw series of storms across Nevada as a strong jet system pushed low pressure cold fronts through the State. Precipitation was above average and temperatures averaged a few degrees above normal. Las Vegas got a rare spot of snow toward the end of the month. Snotel measurements in the primary watersheds showed the water content of the snow pack at 120 to 168 percent of normal at the end of the month. Cattle and calf sales continued. Feeder cattle remained in high demand early in the month, and the marketing of cull cattle continued. Hay marketing and shipping was active with somewhat lower graded hay moving. Shipment of onions from storage continued. Potato processing remained active. Fall seeded grains and garlic were in generally good condition. Winter livestock feeding was underway with snow cover requiring supplemental feed.

CLIMATOLOGICAL DATA: Normals and Means

ELKO													
TEMPERATURE	Jan	Feb	Mar	Apr	May	Jun	Jul	Aug	Sep	Oct.	Nov	Dec	Year
Monthly Average 2003	36.2	30.5	39.5	43.2	53.7	64.1	74.4	71.0	59.8	52.1	32.4	30.1	48.9
Departure from Normal	10.6	-0.8	-0.9	-1.4	1.0	2.4	5.3	3.4	1.6	5.4	-2.1	4.1	2.4
Highest	65	57	72	73	97	98	103	97	88	88	61	56	103
Lowest	13	4	13	19	22	32	41	44	25	16	7	3	3
PRECIPITATION (in.)													
Monthly Total	0.95	0.55	0.48	1.66	1.68	0.01	0.92	1.70	0.20	0.08	0.71	1.96	10.90
Departure from Normal	-0.19	-0.33	-0.50	0.85	0.60	-0.66	0.62	1.34	-0.48	-0.66	-0.34	1.03	1.28
Greatest 24 Hour	0.56	0.23	0.32	0.27	0.51	0.01	0.70	0.76	0.11	0.05	0.30	0.55	0.76

ELY													
TEMPERATURE	Jan	Feb	Mar	Apr	May	Jun	Jul	Aug	Sep	Oct.	Nov	Dec	Year
Monthly Average 2003	35.9	27.3	37.3	40.9	51.1	61.5	71.6	68.2	57.7	50.8	30.4	27.5	46.7
Departure from Normal	10.7	-2.5	1.4	-1.3	-0.7	1.6	4.2	2.4	1.0	5.4	-3.1	1.7	1.7
Highest	63	56	68	69	92	92	98	94	86	81	59	55	98
Lowest	92.1	-6	1	14	14	30	39	39	21	16	2	-12	-12
PRECIPITATION (in.)													
Normal Total	0.22	0.47	0.41	1.74	1.80	0.10	0.49	1.19	0.11	0.07	0.75	1.19	8.54
Departure from Normal	-0.52	-0.28	-0.64	0.84	0.51	-0.56	-0.11	0.28	-0.83	-0.93	0.12	0.69	-1.43
Greatest 24 Hour	0.16	0.19	0.25	0.65	0.93	0.06	0.47	0.55	0.06	0.06	0.22	0.76	0.93

Las Vegas													
TEMPERATURE	Jan	Feb	Mar	Apr	May	Jun	Jul	Aug	Sep	Oct.	Nov	Dec	Year
Monthly Average 2003	54.1	51.6	59.6	62.9	77.9	87.9	94.8	90.3	84.4	75.4	52.6	47.9	70.0
Departure from Normal	7.1	-0.6	1.3	-3.1	2.5	2.3	3.6	1.0	3.1	6.7	-2.4	0.9	1.9
Highest	75	81	83	84	109	109	115	110	105	98	72	69	115
Lowest	37	30	37	44	50	68	73	70	64	50	33	29	29
PRECIPITATION (in.)													
Normal Total	0.02	2.13	0.32	0.38	0.01	0.00	1.08	0.83	0.52	0.00	0.61	0.96	6.86
Departure from Normal	-0.57	1.44	-0.27	0.23	-0.23	-0.08	0.64	0.38	0.21	-0.24	0.30	0.56	2.37
Greatest 24 Hour	0.02	0.77	0.20	0.33	0.01	0.00	0.52	0.51	0.52	0.00	0.49	0.36	0.77

CLIMATOLOGICAL DATA: Normals and Means - continued

Reno													
TEMPERATURE	Jan	Feb	Mar	Apr	May	Jun	Jul	Aug	Sep	Oct.	Nov	Dec	Year
Monthly Average 2003	43.0	37.5	46.5	45.4	60.4	71.6	79.2	74.1	68.0	59.4	40.0	38.1	52.3
Departure from Normal	9.4	-1.0	3.2	-3.2	4.0	6.9	7.9	4.2	5.6	7.4	-0.9	4.1	4.0
Highest	71	62	75	73	97	98	104	99	94	86	70	63	104
Lowest	23	13	21	23	34	44	52	52	41	31	16	15	13
PRECIPITATION (in.)													
Normal Total	0.17	0.23	0.31	0.83	0.04	0.38	0.23	1.01	0.01	0.03	0.12	1.22	4.58
Departure from Normal	-0.89	-0.83	-0.55	0.48	-0.58	-0.09	-0.01	0.74	-0.44	-0.39	-0.68	0.34	-2.90
Greatest 24 Hour	0.07	0.07	0.20	0.45	0.02	0.37	0.08	0.51	0.01	0.02	0.12	0.43	0.51

Winnemucca													
TEMPERATURE	Jan	Feb	Mar	Apr	May	Jun	Jul	Aug	Sep	Oct.	Nov	Dec	Year
Monthly Average 2003	40.2	32.5	42.1	44.3	55.4	67.4	75.6	71.5	61.3	52.4	34.0	33.8	50.9
Departure from Normal	10.1	-3.6	1.0	-2.4	0.2	3.1	3.6	-1.6	1.0	3.6	-3.4	4.2	1.3
Highest	67	58	76	75	98	99	107	102	93	85	65	60	107
Lowest	15	3	9	21	20	33	38	42	30	18	2	11	2
PRECIPITATION (in.)													
Normal Total	1.28	0.39	0.63	1.03	1.72	0.01	0.19	0.09	0.38	0.09	0.83	1.78	8.42
Departure from Normal	0.45	-0.23	-0.23	0.18	0.66	-0.68	-0.08	-0.26	-0.15	-0.57	0.03	0.97	0.09
Greatest 24 Hour	0.70	0.18	0.40	0.28	0.59	0.01	0.16	0.09	0.38	0.08	0.27	0.57	0.59

^{1/} Annual totals and averages are preliminary summaries of monthly totals

ANNUAL CROP SUMMARY - NEVADA, 2001-2003

Crop	Year	Acreage		Production			Season Average Price Per Unit	Value Of Prod.
		Planted	Harvested	Unit	Yield Per Acre	Total		
Winter Wheat	2001	7	3	BU	75.0	190	3.60	540
	2002	6	3		86.0	258	3.45	880
	2003	7	3		83.0	249	3.20	797
Spring Wheat	2001	9	2		95.0	80	3.05	580
	2002	7	3		75.0	150	3.60	540
	2003	5	4		75.0	300	3.55	1065
All Wheat	2001	15	5		90.0	270	2.15	840
	2002	13	5		81.6	408	3.55	1420
	2003	12	7		78.4	549	3.35	1862
Barley	2001	4	1		90.0	90	2.65	239
	2002	4	2		97.0	194	3.00	582
	2003	5	3		80.0	240	3.30	792
Alfalfa Hay	2001	--	265	TONS	4.50	1193	113.00	134809
	2002	--	275		4.30	1183	101.00	119483
	2003	--	265		4.40	1,166	98.00	114268
All Other Hay	2001	--	230		1.70	391	116.00	45356
	2002	--	210		1.60	336	108.00	36288
	2003	--	175		1.50	263	92.5	24328
All Hay	2001	--	495		3.20	1584	114.00	180165
	2002	--	485		3.13	1519	102.00	155771
	2003	--	440		3.25	1,429	97.5	138596
Corn Silage	2001	--	3		22.0	66	--	--
	2002	--	4		20.0	80	--	--
	2003	--	4		23.0	92		
Alfalfa Seed	2001	--	9.5	LBS	660	6270	1.25	7838
	2002	--	6.0		550	3300	1.20	3960
	2003	--	4.5		680	3060	1.12	3427
Potatoes	2001	6.5	6.5	CWT	360	2340	6.55	15327
	2002	7.6	7.6		350	2660	4.55	12103
	2003	8.3	8		415	3320	4.25	14110
		-Actual Acres-		-Actual Tons-				
Garlic	2001	1400	1400		6.2	8680	340.00	2958
	2002	1100	1100		8.5	9350	400.00	3740
	2003	1200	1200		9.6	9120	420.00	3830
Onions	2001	2900	2900		23.0	66700	240.00	16008
	2002	3300	3300		28.0	92400	260.00	24024
	2003	3100	3100		30.0	93000	320.00	297.00

RECORD HIGHS AND LOWS IN NEVADA AGRICULTURE

Item	Unit	Record High		Record Low		Year Estimate Series Began
		Quantity	Year	Quantity	Year	
Winter Wheat:						
Harvested	Acres	19,000	1974	1,000	1932	1909
Yield	Bushels	100	1993,1995,1996 1997,1998,2000	19.7	1919,1922	1909
Production	Bushels	1,400,000	1997	23,000	1932	1909
Spring Wheat:						
Harvested	Acres	19,000	1919	1,000	2001	1909
Yield	Bushels	95	1997,2000	20	1921,1936	1909
Production	Bushels	1,200,000	1984	80,000	2001	1909
All Wheat:						
Harvested	Acres	31,000	1976,1981	3,000	1881,2001	1870
Yield	Bushels	98.7	1997	18	1875	1870
Production	Bushels	1,890,000	1982	68,000	1881	1859
Barley:						
Harvested	Acres	32,000	1982	1,000	2001	1870
Yield	Bushels	110	1982	23.0	1877	1870
Production	Bushels	2,560,000	1982	90,000	2001	1870
Alfalfa Hay:						
Harvested	Acres	275,000	2002	98,000	1947	1909
Yield	Ton	4.60	1998,2000	1.80	1931	1909
Production	Ton	1,219,000	2000	234,000	1931	1909
All Other Hay:						
Harvested	Acres	310,000	1970	150,000	1992	1969
Yield	Ton	1.80	1997,1999	1.05	1975	1969
Production	Ton	428,000	1982	188,000	1992	1969
All Hay:						
Harvested	Acres	530,000	1983	206,000	1931	1909
Yield	Ton	3.21	1998	1.33	1943	1909
Production	Ton	1,584,000	2001	302,000	1931	1909
Alfalfa Seed:						
Harvested	Acres	23,500	1970	1,000	1960	1959
Yield	Pounds	900	1990	200	1962	1959
Production	Pounds	14,400,000	1990	300,000	1960	1959
Potatoes:						
Harvested	Acres	17,000	1978	500	1968	1879
Yield	Cwt.	450	2000	60	1931	1879
Production	Cwt.	5,440,000	1978	88,000	1889	1879
All Cattle:						
Jan. 1	Head	700,000	1982	36,000	1867	1867
All Sheep:						
Jan. 1	Head	1,330,000	1920	24,000	1867	1867
All Hogs:						
Jan. 1	Head	34,000	1916	3,000	1867,1868	1867

WINTER WHEAT: Acreage, Yield, Production, Price and Value, Nevada, 1994-2003

Year	Acres Planted	Acres Harvested	Yield Per Acre	Production	Season Price Ave.	Value of Production
	<i>Acres</i>		Bushels	1000 Bu.	\$'s Per Bu.	1000 \$'s
1994	7,000	5,000	90	450	3.60	1,620
1995	5,000	4,000	100	400	4.45	1,780
1996	10,000	9,000	100	900	4.15	3,735
1997	15,000	14,000	100	1,400	3.25	4,550
1998	7,000	6,000	100	600	2.25	1,350
1999	11,000	10,000	95	950	2.55	2,423
2000	10,000	9,000	100	900	2.45	2,205
2001	9,000	2,000	95	190	3.05	580
2002	6,000	3,000	86	258	3.45	880
2003	7,000	3,000	83	249	3.20	797

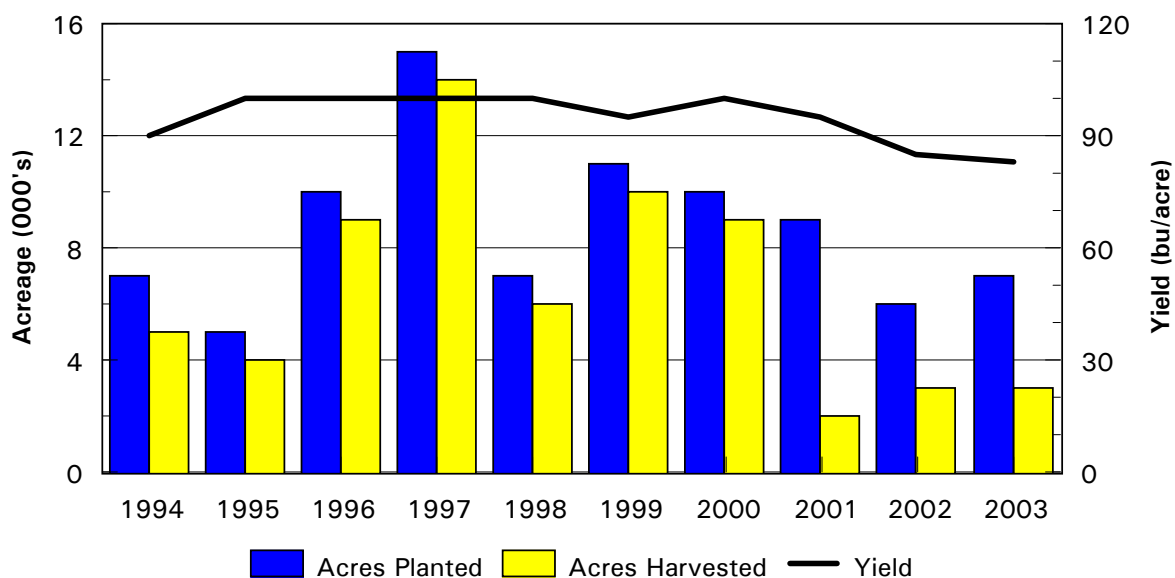
WINTER WHEAT: Acreage, Yield and Production, By County, Nevada, 2002-2003

County	2002				2003			
	Planted	Harvested	Yield	Production	Planted	Harvested	Yield	Production
	---- Acres ----		---- Bushels ----		---- Acres ----		---- Bushels ----	
Humboldt	2,000	1,900	92	175,000	2,000	1,900	90	175,000
Pershing ¹	700	0	0	0	----	----	----	----
Other Counties	2,500	1,100	73	80,000	4,000	900	73	66,000
Northwest	5,200	3,000	85	255,000	6,000	2,800	85	237,000
Other Districts ²	800	0	0	0	1,000	200	60	12,000
State	6,000	3,000	85	255,000	7,000	3,000	83	249,000

¹ In 2003, Pershing County data was included in "Other Counties."

²Data included in "Other Districts" to avoid disclosing individual information.

Winter Wheat



SPRING WHEAT: Acreage, Yield, Production, Price and Value, Nevada, 1994-2003

Year	Acres Planted	Acres Harvested	Yield Per Acre	Production	Season Price Ave.	Value of Production
	Acres		Bushels	000 Bu.	\$'s Per Bu.	000 \$'s
1994	5,000	4,000	55	220	3.40	748
1995	7,000	6,000	75	450	4.40	1980
1996	11,000	10,000	75	750	4.05	3038
1997	6,000	5,000	95	475	3.25	1544
1998	9,000	8,000	80	640	2.35	1504
1999	6,000	5,000	85	425	2.75	1169
2000	8,000	6,000	95	570	2.75	1568
2001	6,000	1,000	80	80 1/	3.25	260
2002	7,000	2,000	75	150	3.60	540
2003	5,000	4,000	75	300	3.55	1065

1/ Record low for Nevada

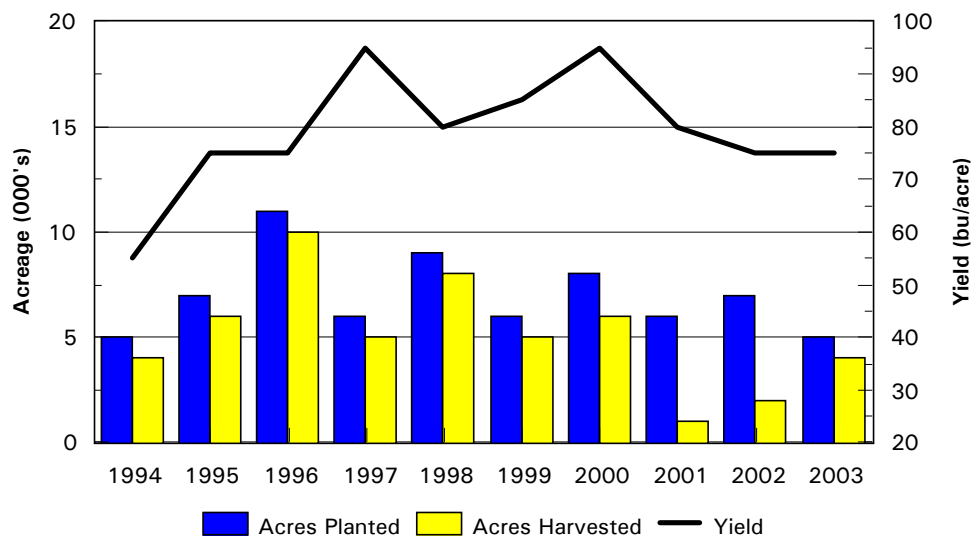
SPRING WHEAT: Acreage, Yield and Production, By County, Nevada, 2001-2002

County	2002				2003			
	Planted	Harvested	Yield	Production	Planted	Harvested	Yield	Production
	---- Acres ----		---- Bushels ----		---- Acres ----		---- Bushels ----	
Humboldt	1,800	1,500	77	115,000	2,700	2,500	80	200,000
Pershing ¹	1,500	0	0	0	----	----	----	----
Other Counties	2,200	500	70	35,000	2,000	1,400	66	35,000
Northwest	5,500	2,000	75	150,000	4,700	3,900	75	293,000
Other Districts ²	1,500	0	0	0	300	100	70	7000
State	7,000	2,000	75	150,000	5,000	4,000	75	300,000

¹ In 2003, Pershing County data was included in "Other Counties."

² Data included in "Other Districts" to avoid disclosing individual information.

Spring Wheat

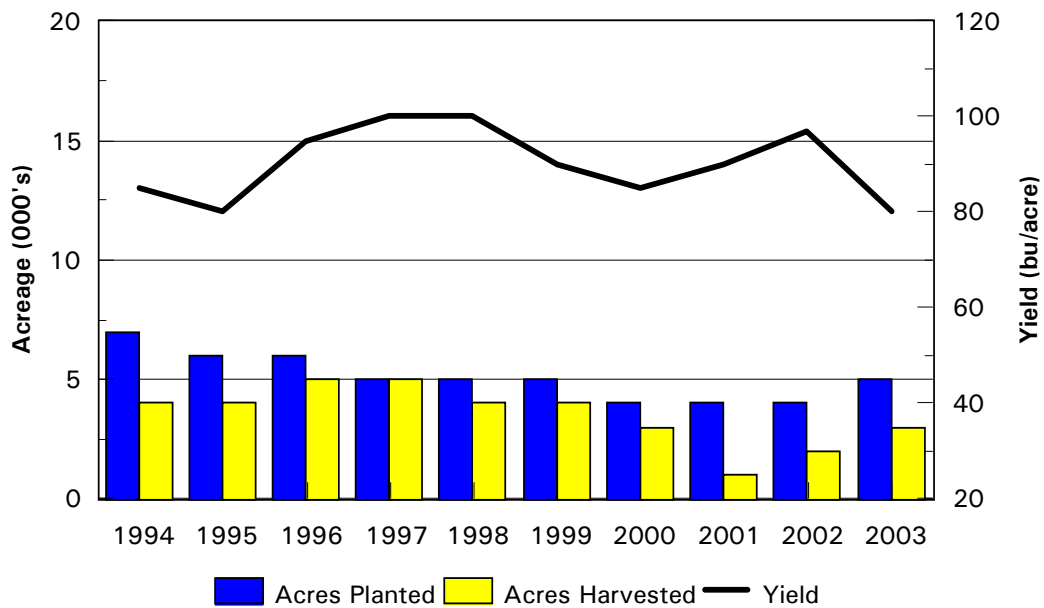


BARLEY: Acreage, Yield, Production, Price and Value, Nevada, 1994-2003

Year	Acres Planted	Acres Harvested	Yield Per Acre	Production	Season Price Ave.	Value of Production
	Acres		Bushels	000 Bu.	\$'s Per Bu.	000 \$'s
1994	7,000	4,000	80	340	2.45	833
1995	6,000	4,000	80	320	3.15	1,008
1996	6,000	5,000	95	475	3.00	1,425
1997	5,000	5,000	100	500	2.85	1,425
1998	5,000	4,000	100	400	2.45	980
1999	5,000	4,000	90	360	2.40	864
2000	4,000	3,000	85	255	2.55	650
2001	4,000	1,000 1/	90	90 ^{1/}	2.65	239
2002	4,000	2,000	97	194	2.95	582
2003	5,000	3,000	80	240	3.3	792

1/ Record low for Nevada

Barley



CORN FOR SILAGE: Area, Yield, Production, Nevada, 2001-2003

Corn For Silage			
Year	Acres Harvested	Per Acre	Production
	Acres	Tons	Tons
2001	3,000	22	66,000
2002	4,000	20	80,000
2003	4,000	23	92,000

HAY: Acreage, Yield, Production, Price and Value, Nevada, 1994-2003

All Hay					
Year	Acres Harvested	Yield Per Acre	Production	Season Average Price ¹	Value of Production
	000	Tons	000 Tons	\$	000\$'s
1994	470	2.98	1,400	95.50	131,236
1995	480	3.16	1,516	96.00	141,735
1996	480	3.16	1,516	99.50	146,421
1997	490	3.07	1,506	105.00	153,690
1998	485	3.21	1,556	102.00	156,308
1999	480	3.02	1,451	83.00	119,859
2000	490	3.27	1,602	93.50	150,484
2001	495	3.20	1,584	114.00	180,165
2002	485	3.13	1,519	102.00	155,771
2003	440	3.25	1,429	97.50	138,596

¹/1 Estimated marketings of alfalfa and other hay used as weights to calculate all hay price.

Hay is the foremost crop produced in Nevada. The Nevada climate and irrigable soils are conducive to the production of high quality alfalfa and specialty hays. "Other Hay" listed in this publication includes wild and improved grasses, timothy, sudan, and grains. Much of the Nevada grown alfalfa hay is marketed to California dairymen and significant quantities are shipped overseas. Much of the grass hay produced is used to meet the winter feeding demands of resident livestock herds. Timothy hay is marketed primarily to race horse accounts across the western United States.

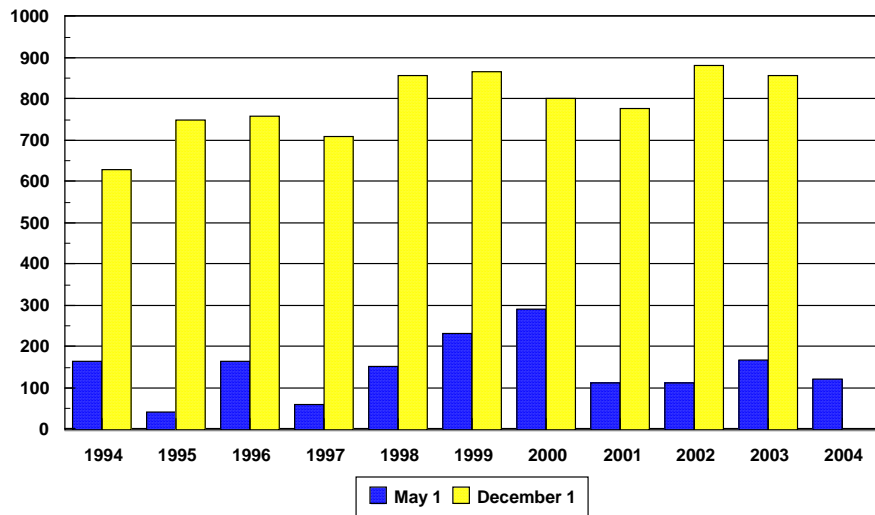


Alfalfa Hay					
Year	Acres Harvested	Yield Per Acre	Production	Season Average Price	Value of Production
	000	Tons	000 Tons	\$	000\$'s
1994	240	4.30	1,032	96.50	99,588
1995	250	4.50	1,125	97.00	104,760
1996	250	4.50	1,125	102.00	114,750
1997	260	4.20	1,092	107.00	116,844
1998	260	4.60	1,196	103.00	123,188
1999	255	4.10	1,046	84.00	87,864
2000	265	4.60	1,219	92.50	112,758
2001	265	4.50	1,193	113.00	134,809
2002	275	4.30	1,183	101.00	119,483
2003	265	4.40	1,166	98.00	114,268

HAY: Acreage, Yield, Production, Price and Value, Nevada 1994-2003 (cont.)

All Other Hay					
Year	Acres Harvested	Yield Per Acre	Production	Season Average Price	Value of Production
	000	Tons	000 Tons	\$	000\$'s
1994	230	1.60	368	86.00	31,648
1995	230	1.70	391	87.00	36,975
1996	230	1.70	391	81.00	31,671
1997	230	1.80	414	89.00	36,846
1998	225	1.60	360	92.00	33,120
1999	225	1.80	405	79.00	31,995
2000	225	1.70	383	98.50	37,726
2001	230	1.70	391	116.00	45,356
2002	210	1.60	336	108.00	36,288
2003	175	1.50	263	92.50	24,328

**All Hay, Stocks on Farms
Nevada, May 1 and Dec. 1, 1994-2004**



HAY: Stocks on Farms, Nevada, May 1 and December 1, 1994-2004

Year	1994	1995	1996	1997	1998	1999	2000	2001	2002	2003	2004
	----- 1,000 Tons -----										
May 1	166	42	166	61	151	233	290	112	111	167	121
Dec 1	630	750	758	708	857	867	801	776	881	857	n/a

HAY: Acreage Harvested, Yield and Production, by Type and County, Nevada, 2002 -2003

2003	Alfalfa Hay			All Other Hay			All Hay
County	Acres	Yield	Production	Acres	Yield	Production	Production
		Tons	Tons		Tons	Tons	Tons
Carson City	1000	3.0	3,000	300	1.7	600	3,000
Churchill	27,000	5.2	140,000	3,000	3.0	9,000	149,000
Douglas	6,000	4.7	28,000	6,000	1.7	10,000	38,000
Humboldt	54,000	4.3	232,000	27,000	1.3	34,000	266,000
Lyon	33,000	5.2	182,000	3,000	3.3	10,000	192,000
Pershing	22,000	3.7	81,000	1,000	1.5	1,000	82,000
Storey	0	0	0	0	0	0	0
Washoe	11,000	4.0	44,000	5,700	1.6	9,000	53,000
Northwest	156,000	4.6	710,000	46,000	1.6	74,000	784,000
Elko	11,000	3.2	35,000	104,000	1.3	139,000	174,000
Eureka	16,000	4.3	68,000	10,000	2.5	25,000	93,000
Lander	19,000	4.3	81,000	7,000	1.4	10,000	91,000
White Pine	16,000	3.5	56,000	2,000	1.5	3,000	59,000
Northeast	62,000	3.9	240,000	123,000	1.4	177,000	417,000
Clark	4,000	6.0	24,000	1,000	3.0	3,000	27,000
Esmeralda	8,000	4.3	34,000	1000	1.0	1,000	35,000
Lincoln	14,000	4.7	66,000	1,000	2.0	2,000	68,000
Mineral	8,000	4.1	33,000	500	2.0	1,000	33,000
Nye	13,000	4.5	59,000	3,000	2.0	6,000	65,000
South	47,000	4.6	216,000	6,000	2.0	12,000	228,000
State	265,000	4.4	1,166,000	175,000	1.5	263,000	1,429,000

2002	Alfalfa Hay			All Other Hay			All Hay
County	Acres	Yield	Production	Acres	Yield	Production	Production
		Tons	Tons		Tons	Tons	Tons
Carson City	1000	3.0	3,000	300	2.0	600	3,600
Churchill	29,000	5.0	146,000	4,000	2.5	10,000	156,000
Douglas	7,000	4.4	31,000	7,000	2.3	16,000	47,000
Humboldt	54,000	4.4	237,000	39,000	1.5	60,000	297,000
Lyon	38,000	5.0	190,000	3,000	3.7	11,000	201,000
Pershing	20,900	3.8	79,500	1,000	1.1	11,000	80,600
Storey	100	5.0	500	100	3.0	300	800
Washoe	12,000	4.4	53,000	5,600	1.8	10,000	63,000
Northwest	162,000	4.6	740,000	60,000	1.8	109,000	849,000
Elko	18,000	2.9	53,000	122,000	1.3	162,000	215,000
Eureka	16,000	4.7	75,000	10,000	2.8	28,000	103,000
Lander	19,000	4.4	83,000	7,000	1.6	11,000	94,000
White Pine	17,000	3.2	55,000	4,000	3.0	12,000	67,000
Northeast	70,000	3.8	266,000	143,000	1.5	213,000	479,000
Clark	5,000	6.0	30,000	1,000	3.0	3,000	33,000
Esmeralda	8,000	4.3	34,000	500	2.0	1,000	35,000
Lincoln	14,000	4.6	65,000	2,000	2.5	5,000	70,000
Mineral	3,000	3.0	9,000	500	2.0	1,000	10,000
Nye	13,000	3.0	39,000	3,000	1.3	4,000	43,000
South	43,000	4.1	177,000	7,000	2.0	14,000	191,000
State	275,000	4.3	1,183,000	210,000	1.6	336,000	1,519,000

Small Grain Hay: Acreage, Yield, Production, Price and Value, Nevada, 1997-2003

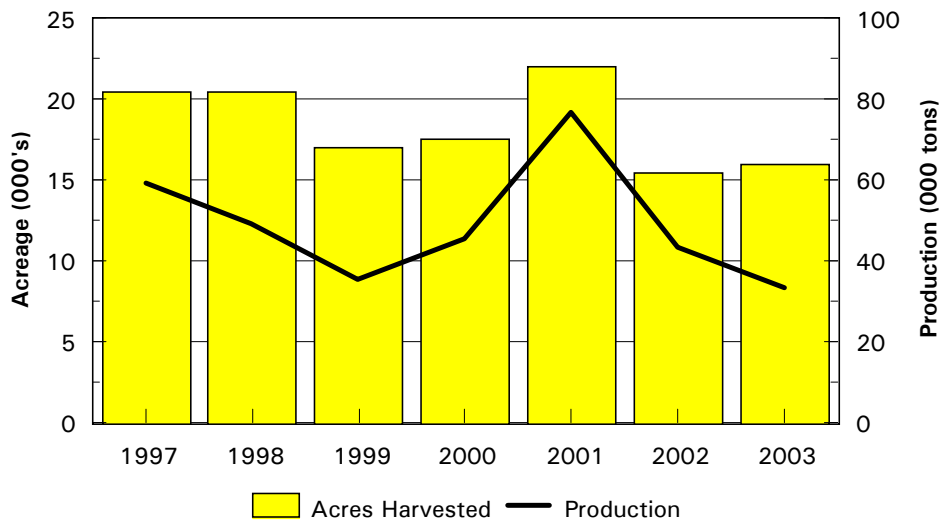
Small Grain Hay					
Year	Acres Harvested	Yield Per Acre	Production	Season Average Price ¹	Value of Production
		Tons	Tons	\$ per ton	000\$'s
1997	20,500	2.9	59,450	77.00	4,578
1998	20,500	2.4	49,200	86.00	4,231
1999	17,000	2.1	35,700	66.00	2,356
2000	17,500	2.6	45,500	74.00	3,367
2001	22,000	3.5	77,000	86.00	6,622
2002	15,500	2.9	43,500	66.00	2,871
2003	16,000	2.1	33,600	73.00	2,453

¹ Based on limited sales as most small grain hay is fed where produced.



Much of Nevada's grain acreage is harvested for hay rather than grain. Wheat, barley, oats, rye, and triticale are commonly cut and baled for cattle feed.

Small Grain Hay

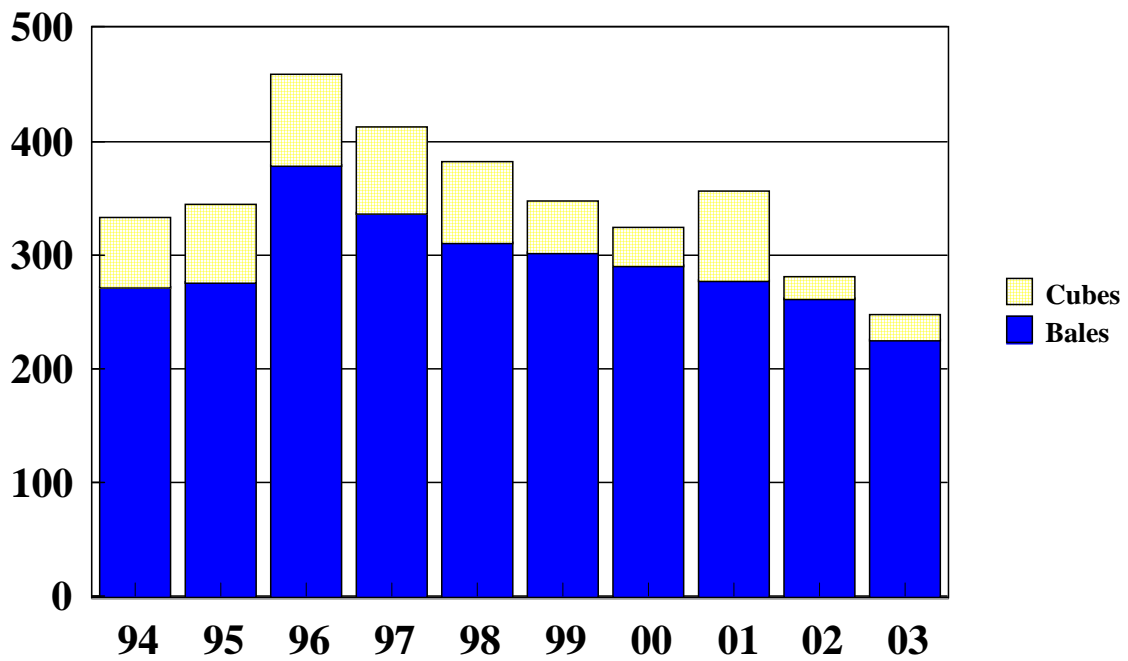


ALFALFA HAY: Volume Trucked from Nevada to California, 1994-2003

Year	Bales	Cubes	Total
	-----Tons-----		
1994	271,821	61,025	332,846
1995	276,685	68,407	345,092
1996	379,701	79,620	459,321
1997	337,459	75,671	413,130
1998	311,357	70,693	382,050
1999	302,255	44,620	346,875
2000	291,305	33,135	324,440
2001	277,511	78,178	355,689
2002	261,937	18,879	280,816
2003	226,411	21,948	248,359



Alfalfa Hay Trucked Into California from Nevada, Bales and Cubes, In Tons, 1994-2003



ALFALFA SEED: Acreage, Yield, Production, Price and Value, Nevada, 1994-2003

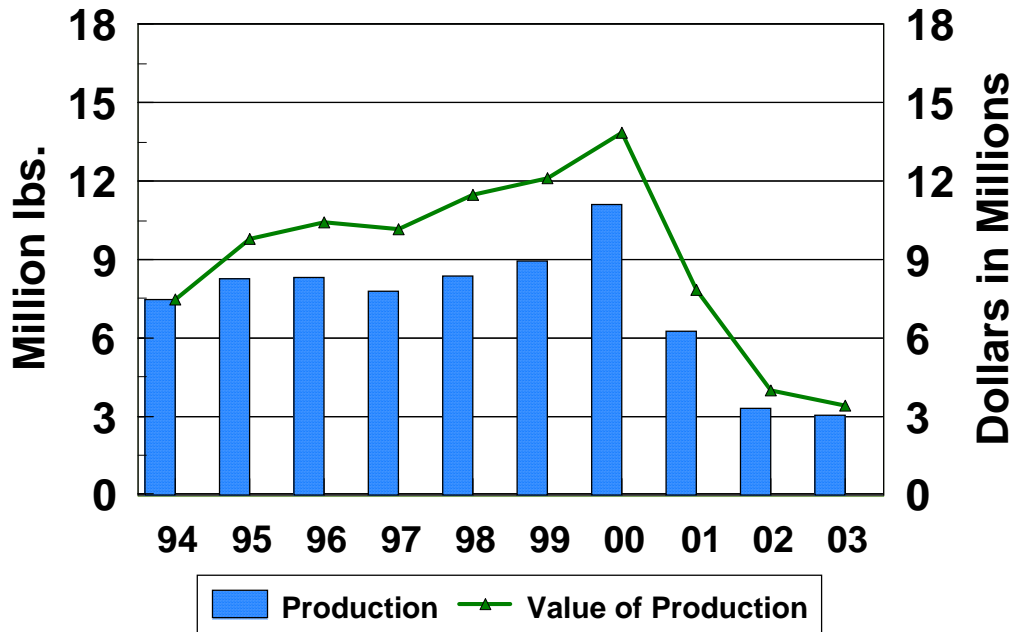
Year	Acres		Production		Value	
	Harvested	Yield Per Acre	Total	Season Average Price	Value of Production	
	Actual Acres	Lbs.	000 Lbs.	\$ Per Lb.	000\$'s	
1994	11,000	680	7,480	1.00	7,480	
1995	12,000	690	8,280	1.20	9,770	
1996	13,000	640	8,320	1.25	10,400	
1997	12,000	650	7,800	1.30	10,140	
1998	13,000	620	8,370	1.37	11,467	
1999	13,000	690	8,970	1.35	12,109	
2000	14,000	765	11,093	1.25	13,866	
2001	9,500	660	6,270	1.25	7,838	
2002	6,000	550	3,300	1.20	3,960	
2003	4,500	680	3,060	1.12	3,427	

ALFALFA SEED: Acreage, Yield, Production, by County, Nevada, 2002-2003

County	2002			2003		
	Harvested	Yield Per Acre	Production of Clean Seed	Harvested	Yield Per Acre	Production of Clean Seed
	Acres	Lbs.	000 Lbs.	Acres	Lbs.	000 Lbs.
Humboldt	4,200	610	2,562	3,200	750	2,400
Pershing	1,600	400	640	900	510	460
All Other ¹	200	490	98	400	500	200
State	6,000	550	3,300	4,500	680	3,060

¹ All other counties combined

Alfalfa Seed Production and Value, 1994-2003



ONIONS: Acreage, Yield, Production, Price and Value, Nevada, 1994-2003

Year	Acres Planted	Acres Harvested	Yield Per Acre	Production	Season Average Price	Value of Production
	<i>Acres</i>	<i>Acres</i>	<i>Tons</i>	<i>Tons</i>	<i>\$ Per Ton</i>	<i>000\$'s</i>
1994	1,500	1,500	21	31,500	280.00	8,820
1995	1,900	1,900	23	43,700	260.00	11,362
1996	1,900	1,900	29	55,100	290.00	15,979
1997	1,800	1,700	27	45,900	290.00	13,311
1998	2,100	2,100	22	46,200	280.00	12,936
1999	3,200	2,800	28	78,400	170.00	13,328
2000	3,300	3,300	23	75,900	310.00	23,529
2001	2,900	2,900	23	66,700	240.00	16,008
2002	3,300	3,300	28	92,400	260.00	24,024
2003	3,100	3,100	30	93,000	320.00	29,760



Nevada onions are produced for both fresh market use and dehydration. Nevada grown garlic is used primarily for seed, although some is also dehydrated. Most of the acreage planted to these crops is located in Lyon, Washoe, and Humboldt counties.

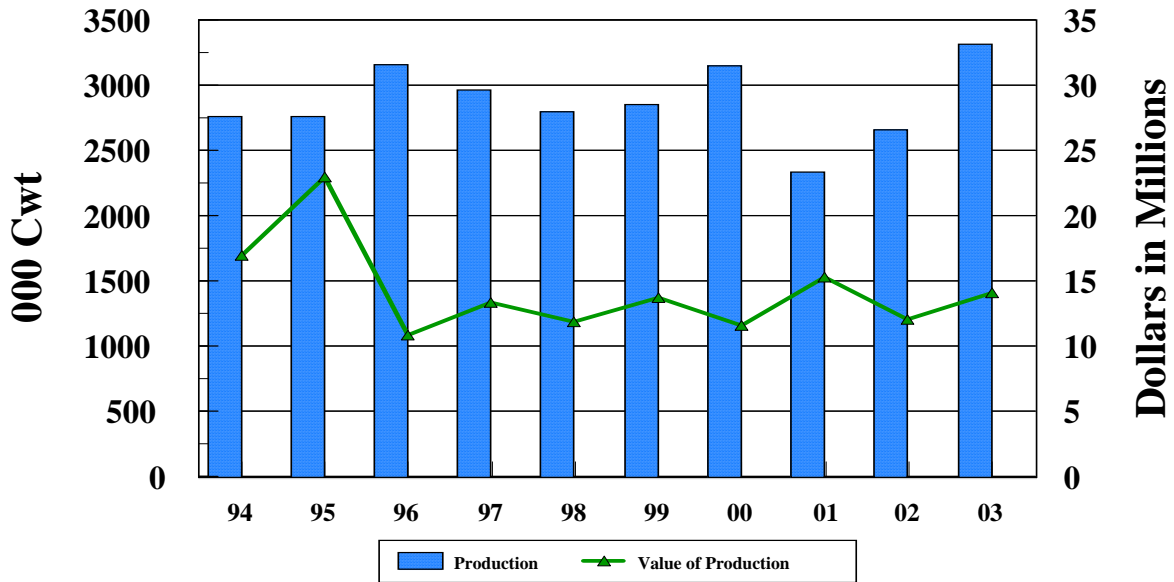
GARLIC: Acreage, Yield, Production, Price and Value, Nevada, 1994-2003

Year	Acres Planted	Acres Harvested	Yield Per Acre	Production	Season Average Price	Value of Production
	<i>Acres</i>	<i>Acres</i>	<i>Tons</i>	<i>Tons.</i>	<i>\$ Per Ton</i>	<i>000\$'s</i>
1994	1,650	1,650	7.5	12,375	295.00	3,651
1995	1,650	1,650	7.7	12,705	350.00	4,447
1996	1,800	1,800	7.9	14,220	370.00	5,261
1997	2,100	2,100	7.5	15,750	380.00	5,198
1998	2,300	2,300	7.2	16,560	320.00	5,134
1999	2,600	2,600	6.5	16,900	300.00	5,070
2000	2,300	2,200	7.5	16,500	340.00	5,610
2001	1,400	1,400	6.2	8,680	340.00	2,958
2002	1,100	1,100	8.5	9,350	400.00	3,740
2003	1,200	1,200	7.6	9,120	420.00	3,830

POTATOES: Acreage, Yield, Production, Price and Value, Nevada, 1994-2003

Year	Acres Planted	Acres Harvested	Yield Per Acre	Production	Season Average Price	Value of Production
	Actual Acres		Cwt.	000 Cwt.	\$ Per Cwt.	000\$'s
1994	8,000	8,000	345	2,760	6.15	16,974
1995	7,600	7,600	365	2,774	8.30	23,024
1996	8,000	7,900	365	3,160	3.45	10,902
1997	7,000	6,000	430	2,967	4.50	13,352
1998	7,000	7,000	400	2,800	4.25	11,900
1999	6,500	6,500	440	2,860	4.80	13,728
2000	7,000	7,000	450	2,860	3.70	11,655
2001	6,600	6,500	360	2,860	6.55	15,327
2002	7,600	7,600	350	2,660	4.55	12,103
2003	8,300	8,000	415	3,320	4.25	14,110

**Potatoes
Production and Value, 1994-2003**



ALL MINT: Acreage, Production, Price, and Value, Nevada, 1998-2003

Year	Acres Harvested	Yield per Acre	Production	Season Average Price	Value of Production
	Actual Acres	--- Pounds ---		\$ per Pound	000 \$'s
1998	1,600	107	171,200	10	1,712
1999	1,400	73	102,200	11	1,124
2000	1,400	90	126,200	10	1,262
2001	1,800	80	144,000	11	1,584
2002	2,000	78	156,000	11	1,716
2003	2,000	98	201,000	12	2,470

LIVESTOCK IN NEVADA

Over 80% of the land area in Nevada is federally controlled public land. Much of this area is arid rangeland with limited potential for use. The grazing of range livestock has historically been and continues to be the most efficient means of harvesting rangeland grasses, a renewable resource. Cattle are the most common agricultural enterprise in Nevada and can be found on over half of the farms and ranches in the State. Sheep numbers have trended downward for several decades, but they remain a viable alternative on many ranges.

CATTLE AND CALVES: Inventory, January 1, 2003-2004 ¹

Class of Livestock	Nevada			United States		
	2003	2004	'04 as % of '03	2003	2004	'04 as % of '03
			Pct.			Pct.
All Cattle and Calves	510	510	100	96,100	94,882	101
All Cows that have calved	270	270	100	42,125	41,851	101
Beef Cows	245	244	100	32,983	32,860	100
Milk Cows	25	26	104	9,142	8,991	101
Heifers 500 Lbs. +	92	89	97	19,628	19,341	
Beef Replacement	46	44	96	5,624	5,517	101
Milk Replacement	11	10	91	4,114	4,020	102
Other Heifers	35	35	100	9,891	9,804	100
Steers 500 Lbs. +	52	51	98	16,554	16,280	101
Bulls 500 Lbs. +	16	15	94	2,248	2,206	102
Calves Under 500 Lbs. +	80	85	106	15,545	15,204	102
Inventory Value (000\$)	382,500	428,400	112	69,785,870	77,733,180	111
Value Per Head (\$'s)	750	840	112	726	819	113

¹ Sum of classes may not add to total due to rounding.

CATTLE AND CALVES: Inventory, Supply and Disposition, Nevada, 1994-2003

Year	Cattle Jan.1	All Calves Born	Inship- ments	Marketings		Farm Slaughter	Deaths	
				Cattle	Calves		Cattle	Calves
----- 000 Head -----								
1994	490	220	47	137	100	2	6	12
1995	500	220	39	139	100	2	6	12
1996	500	220	47	128	99	2	6	12
1997	520	220	38	146	101	2	6	13
1998	510	220	50	148	101	2	6	13
1999	510	230	55	153	101	2	6	13
2000	520	230	55	163	101	2	6	13
2001	520	225	67	200	91	2	6	13
2002	500	220	57	170	76	2	6	13
2003	510	235	58	172	100	2	6	13

CATTLE AND CALVES: Production and Income, Nevada, 1994-2003

Year	Production	Marketings	Value of Production	Cash Receipts ¹	Value Home Consumption	Gross Income
	----- 000 Lbs -----		----- 000\$'s -----			
1994	152,915	176,000	113,009	130,640	1,748	132,388
1995	151,255	178,000	86,748	102,436	1,360	103,796
1996	154,715	166,000	74,089	81,017	1,150	82,167
1997	152,860	185,400	92,246	112,287	1,434	113,721
1998	153,700	187,000	94,333	114,870	1,762	116,632
1999	168,600	192,000	117,250	134,456	2,010	136,466
2000	170,550	202,000	141,061	167,758	2,414	170,172
2001	176,140	235,000	146,911	192,470	2,412	194,882
2002	171,090	119,000	123,866	142,471	2,097	144,568
2003	171,335	210,600	151,734	182,691	2,514	185,205

¹ Receipts from marketings and sale of farm slaughter.

CATTLE AND CALVES: Inventory, January 1, by County, Nevada, 1999-2004

County & District	1999	2000	2001	2002	2003	2004
	-----Number of Head-----					
Carson City	1000	700	700	700	700	800
Churchill	40,000	39,000	38,000	38,000	43,000	41,000
Douglas	19,000	19,000	20,000	20,000	15,000	15,000
Humboldt	66,000	67,000	70,000	66,000	66,000	63,000
Lyon	40,000	40,000	41,000	37,000	35,000	38,000
Pershing	29,000	28,000	28,000	26,000	25,000	23,000
Storey	300	300	300	300	300	200
Washoe	24,000	24,000	26,000	26,000	25,000	26,000
Northwest	219,000	218,000	224,000	214,000	211,000	214,000
Elko	164,000	165,000	170,000	169,000	165,000	155,000
Eureka	24,000	24,000	22,000	22,000	18,000	19,000
Lander	20,000	19,000	17,000	11,000	24,000	31,000
White Pine	25,000	25,000	24,000	24,000	27,000	27,000
Northeast	233,000	233,000	233,000	226,000	234,000	232,000
Clark	10,000	10,000	11,000	10,000	9,000	9,000
Esmeralda	6,000	7,000	7,000	6,000	7,000	7,000
Lincoln	15,000	15,000	16,000	16,000	16,000	15,000
Mineral	5,000	4,000	4,000	4,000	3,000	2,000
Nye	22,000	23,000	25,000	24,000	30,000	31,000
South	58,000	59,000	63,000	60,000	66,000	64,000
State	510,000	510,000	520,000	500,000	510,000	510,000

CATTLE AND CALVES: Number on Feed, January 1, Nevada, 1999-2004

Item	1999	2000	2001	2002	2003	2004	2004 as % of 2003
	----- Thousand Head -----						- Percent -
Number on Feed for Slaughter Market	16	21	25	20	16	13	81

SHEEP AND LAMBS: Inventory, January 1, 2003-2004 ¹

Class of Livestock	Nevada			United States		
	2003	2004	04 as % of 03	2003	2004	04 as % of 03
			Pct.			Pct.
All Sheep and Lambs	80	75	93	6,300.0	6,090.0	96
All Market Sheep & Lambs	10	11	100	1,642.0	1,610.0	98
Market Sheep	1	1	200	67.8	67.3	99
Market Lambs	10	10	105	1,583.2	1,542.7	97
All Breeding Sheep & Lambs	70	64	91	4,658.0	4,480.0	96
Breeding Ewes 1 year & older	55	52	94	3,770.0	3,601.0	95
Breeding Rams 1 year & older	2	2	100	193.0	189.0	97
Breeding Replacement Lambs	13	10	76	703.0	690.5	98
Inventory Value (000\$)	8,960	9,375	104	656,638	721,314	109
Value Per Head (\$'s)	112	125	111	104	118	113

¹ Sum of classes may not add to total due to rounding.

SHEEP AND LAMBS: Inventory, Supply and Disposition, Nevada, 1994 -2003

Year	Sheep & Lambs Jan.1 ¹	Lamb Crop	Inshipments	Marketings		Farm Slaughter	Deaths	
				Sheep	Lambs		Sheep	Lambs
----- 000 Head -----								
1994	91	62	24	10.0	41.0	1.5	8	13
1995	103	60	24	9.5	42.5	1.5	8	13
1996	93	58	24	13.5	49.0	1.5	7	13
1997	91	56	22	17.0	44.0	1.0	7	12
1998	88	57	21	16.0	45.0	1.0	7	12
1999	85	58	32	11.0	53.0	1.0	7	13
2000	90	65	32	3.0	65.0	1.0	8	15
2001	95	63	18	7.0	45.0	1.0	8	15
2002	90	54	18	13.5	44.0	1.5	8	15
2003	80	60	18	10.5	50.0	1.5	7	14

¹ Includes new crop lambs beginning in 1996.

² Data has not been released.



SHEEP AND LAMBS: Production and Income, Nevada, 1994-2003

Year	Production	Marketings	Value of Production	Cash Receipts ¹	Value Home Consumption	Gross Income
	----- 000 Lbs. -----		----- 000 \$'s -----			
1994	4,293	5,345	1,785	2,229	97	2,326
1995	3,928	7,105	2,791	4,558	140	4,698
1996	4,148	6,615	2,655	4,257	155	4,412
1997	2,666	5,066	1,769	3,492	143	3,635
1998	2,600	4,860	1,583	2,861	117	2,978
1999	3,080	5,190	2,022	3,271	119	3,390
2000	3,860	5,650	2,189	3,997	123	4,120
2001	3,130	4,230	2,045	2,681	115	2,796
2002	1,738	4,600	1,444	2,889	155	3,044
2003	2,450	4,655	2,323	3,832	182	4,014

¹ Receipts from marketings and sale of farm slaughter.

SHEEP AND LAMBS: Inventory, January 1, by County, Nevada, 1999-2004 ^{1/}

County & District	1999	2000	2001	2002	2003	2004
	----- Actual Numbers -----					
Carson City	500	500	1,000	1,000	^{1/}	^{1/}
Douglas	1,000	1,000	1,000	1,000	1,000	600
Humboldt	8,000	7,000	8,000	8,500	18,000	8,600
Lyon	12,000	12,000	11,000	12,000	16,000	12,700
Pershing	8,000	9,000	10,000	9,000	5,800	5,500
Washoe	7,000	11,000	10,000	10,500	5,700	4,900
Other Counties	500	500	500	500	1,500	700
Northwest	37,000	41,000	41,500	42,500	47,500	33,000
Elko	21,000	20,000	21,000	25,000	20,200	18,700
Eureka	12,500	12,500	14,000	13,000	13,000	400
Lander	5,000	5,000	6,000	5,000	3,000	2,300
White Pine	8,000	10,000	11,000	12,000	21,000	18,600
Northeast	46,500	47,500	52,000	55,000	46,000	40,000
Other Counties	1,500	1,500	1,500	2,500	2,000	7,000
South	1,500	1,500	1,500	2,500	2,000	2,000
State	85,000	90,000	95,000	100,000	100,000	75,000

^{1/} Included in Combined Counties

WOOL PRODUCTION AND VALUE: Nevada, 1994-2003

Year	Sheep Shorn	Weight Per Fleece	Wool Production	Price per Pound	Value
	000 Head	Lbs.	000 Lbs.	\$'s	000 \$'s
1994	74	9.8	722	.73	527
1995	74	9.2	680	1.08	734
1996	70	9.6	669	.69	462
1997	70	8.9	620	.90	558
1998	67	9.1	607	.58	352
1999	74	9.1	670	.33	221
2000	72	9.1	655	.28	183
2001	71	8.7	620	.44	273
2002	65	9.1	590	.85	502
2003	55	8.4	460	.95	437

HOGS AND PIGS: Inventory, December 1, 2002-2003 ¹

Class of Livestock	Nevada			United States		
	2002	2003	'03 as % of '02	2002	2003	'03 as % of '02
	--- 000 Head ---		Pct.	--- 000 Head ---		Pct.
All Hogs and Pigs	5.5	5.5	100	59,544	60,669	102
Breeding	1	1	100	6,058	5,990	99
Market	4.5	4.5	100	53,496	54,458	102
Inventory Value (000\$)	512	479	94	4,230,728	4,017,554	95
Value Per Head (\$'s)	93	87	74	71	67	94

¹ Sum of classes may not add to total due to rounding.

HOGS AND PIGS: Inventory, Supply and Disposition, Nevada, 1994-2003

Year	Hogs & Pigs Dec.1 ¹	Pig Crop	Inshipments	Farm Marketings	Farm Slaughter	Deaths
		Dec- Nov ¹				
----- Actual Number -----						
1994	9,000	18,600	5,200	21,500	300	2,000
1995	9,000	17,800	4,000	22,000	300	2,000
1996	7,000	15,000	4,000	18,200	300	1,500
1997	6,500	20,000	3,000	20,700	300	1,000
1998	7,500	20,000	3,000	12,200	300	1,000
1999	7,500	1,000	4,000	13,000	300	500
2000	7,500	9,800	8,500	17,500	300	500
2001	7,500	6,600	3,000	9,300	300	500
2002	6,500	6,600	3,500	10,300	300	500
2003	5,500	5,200	4,000	8,500	300	400

¹ December 1st of preceding year. ² Data has not been released.

HOGS AND PIGS: Production and Income, Nevada, 1994-2003

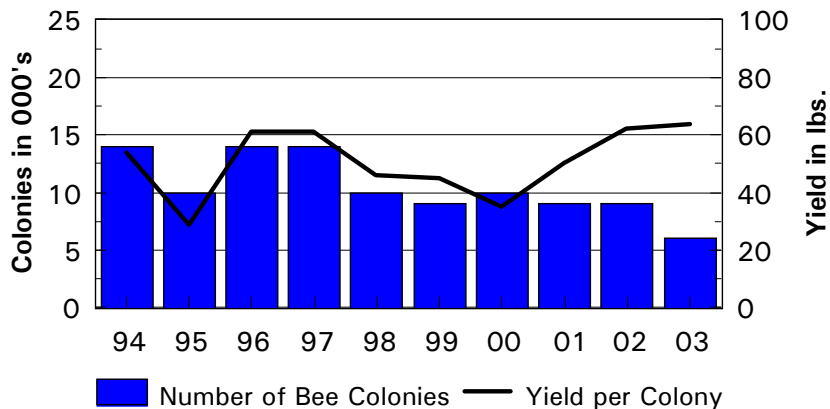
Year	Production	Marketings	Value of Production	Cash Receipts ¹	Value Home Consumption	Gross Income
----- 000 Lbs. -----			----- 000 \$'s -----			
1994	4,581	4,682	1,764	1,837	26	1,863
1995	4,406	4,792	1,657	1,833	25	1,858
1996	3,748	3,956	1,918	2,021	34	2,055
1997	4,454	4,608	2,375	2,446	36	2,482
1998	2,698	2,755	800	821	21	842
1999	2,709	2,876	945	982	23	1,005
2000	3,440	3,888	1,359	1,524	26	1,550
2001	1,885	2,043	791	849	28	877
2002	2,002	2,265	665	752	22	774
2003	1,773	1,895	631	677	26	703

¹ Receipts from marketings and sale of farm slaughter.

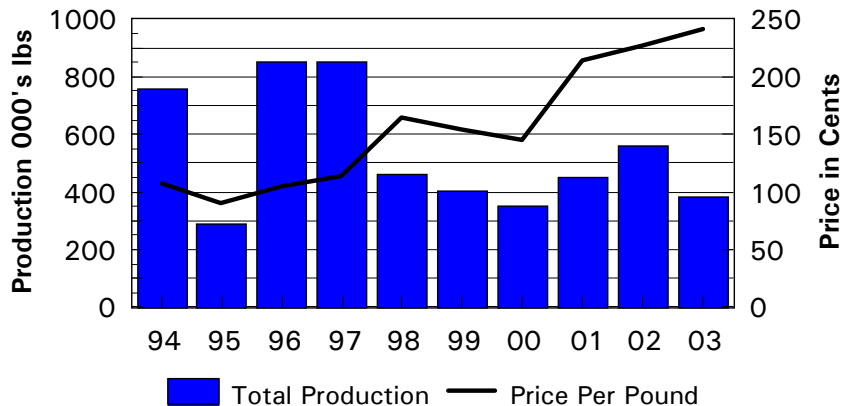
HONEY: Production and Value, Nevada, 1994-2003

Year	Colonies of Bees	Yield Per Colony	Total Production	Average Price Per Pound	Value of Production	Honey Stocks Dec. 15
	<i>000</i>	<i>Lbs.</i>	<i>000 Lbs.</i>	<i>Cents</i>	<i>000 \$'s</i>	<i>000 Lbs.</i>
1994	14	54	756	108	816	174
1995	10	29	290	90	261	38
1996	14	61	854	105	897	68
1997	14	61	854	114	974	171
1998	10	46	460	165	759	175
1999	9	45	405	154	624	271
2000	10	35	350	145	508	95
2001	9	50	450	214	963	36
2002	9	62	558	227	1267	61
2003	6	64	384	241	925	46

Honey Bee Colonies and Yield 1994-2003



Honey Production and Prices 1994-2003



MILK COWS & PRODUCTION OF MILK & MILKFAT, Nevada, 1994-2003.

Year	Number of Milk Cows ¹	Production of Milk and Milkfat ²				
		Per Milk Cow		Percentage of Fat in All Milk Production	Total	
		Milk	Milkfat		Milk	Milkfat
	- 1,000 Head -	- Pounds -		- Percent -	- Million Lbs.-	
1994	23.0	17,356	661	3.60	313	12.4
1995	24.0	18,128	653	3.60	426	14.9
1996	25.0	18,800	675	3.59	470	15.3
1997	26.0	18,346	659	3.59	477	16.9
1998	26.0	18,306	693	3.59	502	17.1
1999	25.0	18,240	642	3.52	456	18.0
2000	25.0	18,040	672	3.53	476	16.1
2001	25.0	19,400	689	3.55	485	16.8
2002	25.0	19,040	715	3.57	501	17.9
2003	26.0	18,654	655	3.51	485	17.0

¹ Average number during year, excludes heifers not yet fresh.

² Excludes milk sucked by calves.



Milk: Utilization & Returns, Nevada, 1994-2003

Year	Milk Used on Farms ¹	Sold to Plants or Dealers ²	Average Returns		Cash Receipts From Marketing
			Per Cwt Milk	Per Lb Milkfat	
	- Million Pounds -		- Dollars -		- 1,000 Dollars -
1994	7	406	12.50	3.47	50,750
1995	5	421	12.00	3.33	50,520
1996	5	465	13.40	3.73	60,310
1997	6	471	11.00	3.31	56,049
1998	5	497	13.80	3.84	68,586
1999	6	450	13.60	3.86	61,200
2000	6	470	11.00	3.12	51,700
2001	6	479	13.00	3.66	62,270
2002	6	495	10.70	3.00	52,965
2003	6	479	11.20	3.19	53,648

¹ Includes milk fed to calves or used for milk, cream, or butter on the farm.

² Includes any milk produced by dealers own herds and equivalent amounts of milk for cream sold to plants and dealers.

ALL MILK PRICES: Milk Sold by Farmers, by Month, Nevada 1999-2003

	All Milk Price Per Cwt.				
Month	1999	2000	2001	2002	2003
	-----\$'s-----				
January	17.40	14.10	9.70	12.40	12.70
February	17.10	13.80	10.10	12.20	9.80
March	14.10	11.40	10.50	11.80	9.60
April	14.10	11.40	11.50	10.60	9.00
May	11.10	9.00	12.10	10.60	9.10
June	11.60	9.40	13.70	10.60	9.50
July	11.50	9.30	14.70	9.80	9.50
August	12.20	9.90	15.10	9.10	11.50
September	12.70	10.30	15.40	9.60	13.90
October	14.60	11.80	16.10	10.00	14.30
November	13.40	10.80	14.90	12.30	13.60
December	13.10	10.60	11.70	10.30	12.20
Annual	13.30	11.00	13.00	10.70	11.20

MILK: Cows Milked, Production per Cow, Total Production, by Quarter, Nevada, 2001-2003

	Cows Milked ¹			Milk Per Cow ²			Milk Production ²		
Quarter	2001	2002	2003	2001	2002	2003	2001	2002	2003
	----- 000's -----			----- Lbs. -----			----- Millions Lbs. -----		
Jan. - Mar.	25.0	25.0	26.0	4,770	5,120	4,900	119.0	128.0	122.0
Apr. - Jun.	25.0	25.0	26.0	4,960	4,800	5,100	124.0	120.0	120.0
Jul. - Sept.	25.0	25.0	26.0	4,880	5,120	5,100	122.0	128.0	123.0
Oct. - Dec.	25.0	25.0	26.0	4,800	5,000	5,050	120.0	125.0	120.0
Annual	25.0	25.0	26.0	19,400	19,500	20,154	485.0	489.0	485.0

¹ Excludes heifers not yet fresh. ² Excludes milk sucked by calves.

MILK COWS AND PRODUCTION: By County, Nevada, 2002-2003 ¹

	2002			2003		
County	Milk Cows	Milk Per Cow	Milk Production	Milk Cows	Milk Per Cow	Milk Production
	#	Lb.	Million Lb.	#	Lb.	Million Lb.
Churchill	9,700	19,600	190.1	13,000	19,200	249.6
Clark	3,700	20,100	74.4	3,500	19,500	68.3
Douglas	700	18,800	13.2	350	19,200	6.7
Lyon	1,900	19,500	37.1	1,500	19,100	28.7
Nye	8,400	19,400	163.0	6,440	19,600	126.2
All Other Counties	600	12,000	7.2	1,210	4,500	5.5
State	25,000	19,400	485.0	26,000	18,700	485.0

¹ Totals may not add due to rounding.

AVERAGE PER ACRE VALUE OF FARM REAL ESTATE:

By Region and State, January 1, 2000-2004 ^{1/2}

State	<u>2000</u>	<u>2001</u>	<u>2002</u>	<u>2003</u>	<u>2004</u>	<u>% Change 2003-2004</u>
	-----Dollars-----					Percent
Northeast:	2,470	2,640	2,810	2,950	3,400	6.3
Connecticut	6,600	6,900	7,300	7,700	10,200	7.4
Delaware	2,850	2,830	2,950	3,200	4,300	7.5
Maine	1,210	1,300	1,400	1,450	1,850	5.7
Maryland	3,500	3,800	4,000	4,200	4,500	8.4
Massachusetts	5,900	6,000	7,200	7,700	9,900	6.5
New Hampshire	2,300	2,400	2,600	2,700	3,250	4.8
New Jersey	7,100	7,400	8,000	8,500	9,750	7.1
New York	1,410	1,500	1,600	1,650	1,780	4.7
Pennsylvania	2,620	2,840	2,950	3,100	3,650	5.8
Rhode Island	6,500	6,700	*7,200	7,700	10,200	9.7
Vermont	1,640	1,750	1,900	2,000	2,150	4.9
Lake States:	1,490	1,690	*1,850	1,990	2,220	10.4
Michigan	2,100	2,250	2,500	2,700	2,920	9.0
Minnesota	1,270	1,320	1,450	1,550	1,800	12.5
Wisconsin	1,500	2,000	*2,150	2,300	2,500	8.7
Corn Belt:	1,840	2,020	2,190	2,290	2,300	8.0
Illinois	2,220	2,450	2,640	2,770	2,610	7.4
Indiana	2,210	2,450	*2,600	2,750	2,770	7.8
Iowa	1,750	1,860	1,980	2,050	2,200	9.5
Missouri	1,190	1,380	1,520	1,600	1,580	7.5
Ohio	2,250	2,400	2,700	2,800	2,930	6.9
Northern Plains:	526	547	573	594	632	6.4
Kansas	590	605	620	620	715	4.4
Nebraska	695	725	*765	800	825	6.5
North Dakota	415	425	440	460	455	7.1
South Dakota	380	405	440	470	500	8.7
Appalachian:	1,940	2,150	*2,260	2,420	2,500	5.5
Kentucky	1,590	1,770	1,850	2,000	2,000	5.3
North Carolina	2,400	2,800	2,900	3,100	3,300	6.5
Tennessee	2,100	2,240	*2,350	2,500	2,500	4.2
Virginia	2,130	2,300	2,490	2,630	2,850	5.6
West Virginia	1,060	1,220	1,370	1,470	1,500	7.1
Southeast:	1,920	2,100	2,260	2,420	2,420	6.6
Alabama	1,680	1,800	1,900	2,000	1,860	5.7
Florida	2,400	2,570	2,800	3,000	3,100	6.9
Georgia	1,800	2,100	2,300	2,500	2,350	6.8
South Carolina	1,600	1,650	1,700	1,800	2,150	4.9
Delta States:	1,230	1,270	1,330	1,400	1,550	6.2
Arkansas	1,250	1,300	1,370	1,470	1,580	6.8
Louisiana	1,250	1,270	1,310	1,350	1,580	5.3
Mississippi	1,180	1,220	1,300	1,350	1,480	5.7
Southern Plains:	631	640	718	748	832	5.6
Oklahoma	634	640	710	740	745	5.7
Texas	630	640	720	750	855	5.6
Mountain:	440	486	*508	526	550	5.2
Arizona	1,140	1,300	1,520	1,600	1,600	6.7
Colorado	640	695	710	730	775	6.2
Idaho	1,170	1,210	*1,240	1,280	1,360	6.3
Montana	300	375	*385	400	410	5.1
Nevada	440	460	*470	480	500	4.2
New Mexico	215	224	*225	230	265	1.9
Utah	900	975	1,050	1,100	1,150	4.5
Wyoming	235	260	285	300	315	5.0
Pacific:	1,890	1,940	*2,050	2,120	2,480	5.5
California	2,850	2,910	3,100	3,200	3,800	5.6
Oregon	1,020	1,050	1,100	1,150	1,250	4.2
Washington	1,150	1,190	*1,230	1,270	1,530	3.4
48 States	1,050	1,130	1,210	1,270	1,360	7.1

/1 Value of farmland and buildings.

/2 Excludes Native American Reservation Land

FARM LABOR AND WAGE RATES:

Mountain II Region, October 2003, January 2004 and April 2004, and July 2004¹

	October 12-18 2003	January 11-17 2004	April 11-17 2004	July 11-17 2004
	----- Workers on Farms (000) ² -----			
All Hired Workers	20	17	26	23
	----- Hours Worked per Worker ² -----			
All Hired Workers	41.5	39.7	40.8	41.1
	----- Type of Work - Dollars per Hour ² -----			
Field Workers	8.11	8.75	9.66	8.63
Livestock Workers	8.12	8.81	8.83	9.39
Field and Livestock Workers	8.11	8.80	9.29	8.90
Wage rates for all workers	8.97	9.80	9.84	9.47

¹ Mountain II Region consists of Colorado, Nevada and Utah.

² Excludes Agricultural service workers.

Labor Wage Rates Mountain II Region, October 2003-July 2004



2003 PESTICIDE AND HERBICIDE APPLICATION SUMMARY

This summary was compiled from information contained in mandatory monthly reports submitted by the Custom Applicator licensees. Its accuracy is based on these monthly reports, and the data therein does not constitute approval or recommendations by the Nevada State Division of Agriculture or the Nevada Agricultural Statistics Service. This is not a complete summary in that it only contains the chemicals applied by custom applicators. It does not include chemical applications by individual farmers and ranchers who may apply chemicals on their own operations.

ALFALFA

PRODUCT APPLIED	TARGET PEST/USE	TOTAL ACRES
2,4-DB	WEEDS	146.00
2,3-DB BUTYRAC	WEEDS	141.60
ATRAPA 5E	CRICKETS	25 .00
ATRAPA 5E	MORMON CRICKETS	120 .20
ATRAPA 5E	THRIP	60 .00
ATRAPA 8	APHID/THRIP	160.00
ATRAPA 8	MORMON CRICKETS	660.00
BROX 2EC	WEEDS	120.00
BUTYRAC 200	WEEDS	709.00
CHLORPYRIFOS TC	CUTWORMS	375.00
CLARITY	WEEDS	243.40
DECLARE	APHID/WEEVIL	440.00
DIGON 400	APHID	723.00
DIMATE	APHID	52.00
DIMETHOATE 400	APHID	1,523.00
DIMETHOATE 400	APHID/WEEVIL	130.00
DIMETHOATE 400	WEEVIL	160.00
DIMETHOATE 4EC	APHID	6,537.00
DIMETHOATE 4EC	APHID/THRIP	935.00
DIMETHOATE 4EC	APHID/WEEVIL	2,621.00
DIMETHOATE 4EC	MORMON CRICKETS	410.00
DIMETHOATE 4EC	WEEDS	103.40
DIMETHOATE 4EC	WEEVIL	445.00
DIURON	WEEDS	330.00
FURADAN 4 F	APHID	625.00
FURADAN 4 F	APHID/WEEVIL	310.00
FURADAN 4 F	WEEVIL	1,583.90
GLYPHOSATE	ALFALFA	123.00
GRAMOXONE EXTRA	WEEDS	63.00
GRAMOXONE MAX	GRASSES	158.30
GRAMOXONE MAX	WEEDS	10,233.00
KARMEX DF	WEEDS	250.00
LORSBAN 4E	APHID	13,647.60
LORSBAN 4E	APHID/THRIP	300.00
LORSBAN 4E	CUTWORMS	245.00
LORSBAN 4E	WEEVIL	494.00
MALATHION 8	APHID	224.00
MALATHION 8	APHID/WEEVIL	224.00
MUSTANG	APHID	2,322.00
MUSTANG	APHID/CUTWORMS	128.00
MUSTANG	CUTWORMS	1,646.30
MUSTANG MAX	APHID	105.00
MUSTANG MAX	APHID/CUTWORMS	5,794.00
MUSTANG MAX	CUTWORMS	2,232.10
MUSTANG MAX	WEEDS	157.00
NUFOS 4E	APHID	264.00
POAST PLUS	GRASSES	115.00
POAST PLUS	WEEDS	401.20
PURSUIT	APHID	106.00
PURSUIT	GRASSES	51.00
PURSUIT	WEEDS	1,560.90

2003 PESTICIDE AND HERBICIDE APPLICATION SUMMARY, continued

ALFALFA continued

PRODUCT APPLIED	TARGET PEST/USE	TOTAL ACRES
PURSUIT DG	WEEDS	2,497.00
PURSUIT W	WEEDS	774.00
PURSUIT W DG	GRASSES	200.00
PURSUIT W DG	WEEDS	940.00
RAPTOR	WEEDS	2,264.60
SELECT 2 EC	APHID	106.00
SELECT 2 EC	GRASSES	1,422.30
SELECT 2 EC	WEEDS	1,198.70
SENCOR 4 F	WEEDS	2,175.60
TREFLAN HFP	WEEDS	338.20
VELPAR L	WEEDS	8,744.00
WARRIOR T	APHID	164.00
WARRIOR T	APHID/CUTWORMS	336.00
WARRIOR T	APHID/WEEVEL	2,621.00
WARRIOR T	CUTWORMS	395.00
WEEDAR 64	WEEDS	283.40

Total Acres Treated: 85,382.70

BARLEY

PRODUCT APPLIED	TARGET PEST/USE	TOTAL ACRES
CERONE	GROWTHREGULATION	83.70
LV-6	WEEDS	7.00

Total Acres Treated: 90.70

BLACKFLY ABATEMENT

PRODUCT APPLIED	TARGET PEST/USE	TOTAL ACRES
VECTOBAC 12AS	BLACKFLY LARVAE	363.94

Total Acres Treated: 363.94

CORN

PRODUCT APPLIED	TARGET PEST/USE	TOTAL ACRES
ATRAZINE 4L	BLACKFLY LARVAE	106.00
CLARITY	WEEDS	50.00
FRONTIER 6.0	WEEDS	106.00
FUMITOXIN	STORED PRODUCT PESTS	
LV-6	WEEDS	93.00
ROUNDUP	GRASSES	45.00

Total Acres Treated: 400.00

2003 PESTICIDE AND HERBICIDE APPLICATION SUMMARY, continued

GRAIN

PRODUCT APPLIED	TARGET PEST/USE	TOTAL MILES
2,4-D AMINE	WEEDS	63.00
DI-SYSTON 8	APHID	145.00

Total Acres Treated: 208.00

GRASS

PRODUCT APPLIED	TARGET PEST/USE	TOTAL ACRES
2,4D-AMINE	WEEDS	17.00
2,4-DAMINE 4	WEEDS	22.00
2-4,D LV6	SAGE BRUSH	600.00
CURTAIL	WEEDS	17.00
DIMETHOATE 4EC	APHID	192.60
GRAMOXONE MAX	WEEDS	15.00
LORSBAN 4E	APHID	237.60
ROUNDUP ULTRA MAX	WEEDS	16.00
WEEDAR 64	WEEDS	55.00
WEEDONE 638	WEEDS	36.00
WEEDONE LV4 EC	WEEDS	38.00

Total Acres Treated: 1,246.20

MIDGE ABATEMENT

PRODUCT APPLIED	TARGET PEST/USE	TOTAL ACRES
DIMLIN 25W	MIDGE FLIES	6.00

Total Acres Treated: 6.00

MINT

PRODUCT APPLIED	TARGET PEST/USE	TOTAL ACRES
BASAGRAM	WEEDS	20.00
BROCLEAN	WEEDS	869.00

Total Acres Treated: 889.00

2003 PESTICIDE AND HERBICIDE APPLICATION SUMMARY, continued

MOSQUITO ABATEMENT

PRODUCT APPLIED	TARGET PEST/USE	TOTAL ACRE
ALTOSID LIQUID	MOSQUITOES	100.00
ALTOSID PELLETS	MOSQUITOES	1,323.50
ATRAPA 8	MOSQUITOES	1,200.00
DIBROM	MOSQUITOES	63,654.00
PYRENONE 25-5	MOSQUITOES	1,790.00
PYROCIDE 5%	MOSQUITOES	1,100.00
RIN 60 6EC	MOSQUITOES	400.00
SCOURGE 4%	MOSQUITOES	320.00
VECTOBAC 12AS	MOSQUITOES	15,962.60
VECTOBAC G	MOSQUITOES LARVAE	56.25
VECTOLEX CG	MOSQUITOES	120.00

Total Acres Treated: 86,025.75

NON-CROP LAND

PRODUCT APPLIED	TARGET PEST/USE	TOTAL ACRES
2,4-D AMINE	SCOTCH THISTLE	7.00
2,4-D AMINE	TAMARISK	10.00
2,4-D AMINE	WEEDS	52.50
2,4-D AMINE	WHITETOP	17.00
2-100 FILED MOUSE	VOLES	3.00
ESCORT	WHITETOP	18.25
FUMITOXIN	GOPHERS	2.00
FUMITOXIN	MOLES	1.00
LI-700	WEEDS	4.00
LOW VOL 6	WEEDS	132.00
LV-6	WEEDS	155.00
PLATEAU	GRASSES	18.00
PRIMATOL	WEEDS	2.00
ROUNDUP PRO	TAMARISK	1.00
ROUNDUP PRO	WEEDS	21.00
ROUNDUP PRO	WHITETOP	10.00
TORDON 22K	SCOTCH THISTLE	9.00
TORDON 22K	THISTLE	13.91
TORDON 22K	WEED	0.25
TRANSLINE	SCOTCH THISTLE	3.00
VELPAR L	WEEDS	2.20
WEEDMASTER	SCOTCH THISTLE	10.00
WEEDONE LV4	WEEDS	35.00
ZP RODENT BAIT (OATS)	GOPHERS	1.00
ZP RODENT BAIT (OATS)	VOLES	1.00
ZP RODENT BAIT AG	VOLES	5.00

Total Acres Treated: 534.11

2003 PESTICIDE AND HERBICIDE APPLICATION SUMMARY, continued

OATS

PRODUCT APPLIED	TARGET PEST/USE	TOTAL ACRES
2,4-D AMINE	WEEDS	28.00
2,4-D LV6 ESTER	WEEDS	59.00
BANVEL 4	WEEDS	166.90
BROCLLEN	WEEDS	26.00
WEEDONE 638	WEEDS	42.00
WEEDONE LV4 EC	WEEDS	113.00

Total Acres Treated: 43.90

ONION SEED

Product Applied	Target Pest/Use	Total Acres
WARRIOR T	THRIP	16.00

Total Acres Treated: 16.70

ONIONS

Product Applied	Target Pest/Use	Total Acres
LANNATE	THRIP	93.00
WARRIOR T	THRIP	186.00

Total Acres Treated: 279.00

PASTURE

Product Applied	Target Pest/Use	Total Acres
2,4-D LV6 ESTER	WEEDS	15.00
CURTAIL	WEEDS	690.00
WEEDONE LV4 EC	WHITETOP	50.00

Total Acres Treated: 755.00

PIGEON ABATEMENT

Product Applied	Target Pest/Use	Total Acres
4 THE BIRDS	PIGEONS	1.00
AVITROL CORN CHOPS	PIGEONS	6.00
AVITROL WHOLE CRON	PIGEONS	81.00

Total Acres Treated: 88.00

2003 PESTICIDE AND HERBICIDE APPLICATION SUMMARY, continued

POTATOES

Product Applied	Target Pest/Use	Total Acres
GRAMOXONE EXTRA	WEEDS	125.00

Total Acres Treated: 125.60

RANGELAND

Product Applied	Target Pest/Use	Total Acres
2,4-D AMINE	LEAFY SPURGE	15.00
2,4-D AMINE	RUSSIAN KNAPWEED	105.00
2,4-D AMINE	SCOTCH THISTLE	13.00
2,4-D AMINE	WEEDS	40.00
2,4-D AMINE	WHITETOP	115.00
ARSENAL	TAMARISK	10.75
ATRAPA 5E	GRASSHOPPERS	80.00
ATRAPA 5E	MORMON CRICKETS	50.00
DIMILIN 2L (NV SLN)	CRICKETS	66,063.00
DIMILIN 2L (NV SLN)	GRASSHOPPERS	2,380.00
DIMILIN 2L (NV SLN)	MORMON CRICKETS	16,681.20
ESCORT	SCOTCH THISTLE	13.00
ESCORT	WEEDS	2.00
ESCORT	WHITETOP	42.25
RODEO	LEAFY SPURGE	0.50
RODEO	SCOTCH THISTLE	0.25
RODEO	WHITETOP	1.00
ROUNDUP PRO	RUSSIAN KNAPWEED	20.00
TORDON 22K	LEAFY SPURGE	17.86
TORDON 22K	RUSSIAN KNAPWEED	76.25
TORDON 22K	WEEDS	40.00
TORDON 22K	WHITETOP	45.00
TRANSLINE	SCOTCH THISTLE	176.35
TRANSLINE	THISTLE	0.40

Total Acres Treated: 85,987.81

PASTURE

PRODUCT APPLIED	TARGET PEST/USE	TOTAL ACRES
2,4-D AMINE	RUSSIAN KNAPWEED	0.25
2,4-D AMINE	SCOTCH THISTLE	37.10
2,4-D AMINE	WEEDS	60.00
2,4-D AMINE	WHITETOP	16.70
ACTIVATOR 90	WEEDS	3.80
DIURON	WEEDS	6,587.01
DIURON 80 DF	WEEDS	176.00
DIURON 80 DF IVM	WEEDS	54.80
GLYPHOSATE	WEEDS	3,220.10
GLYPRO PLUS	WEEDS	13.80
KARMEX DF	WEEDS	1,621.00
KROVAR	WEEDS	110.23
LI-700	WEEDS	10.00
OUST	WEEDS	1,882.70
OUST XP	WEEDS	1,472.40
PENDULUM WDG	WEEDS	1.00
SAHARA	WEEDS	8,582.04
SURFLAN AS	WEEDS	1.00
TORDON 22K	WEEDS	0.60
WEEDONE LV4 EC	WEEDS	80.00

Total Acres Treated: 23,930.53

2003 PESTICIDE AND HERBICIDE APPLICATION SUMMARY, continued

RODENT ABATEMENT

PRODUCT APPLIED	TARGET PEST/USE	TOTAL ACRES
ZP RODENT BAIT (OATS)	RODENTS	1.00

Total Acres Treated: 1.00

SQUASH

PRODUCT APPLIED	TARGET PEST/USE	TOTAL ACRES
DIMETHOATE 4EC	APHID	22.00

Total Acres Treated: 22.00

STARLING ABATEMENT

PRODUCT APPLIED	TARGET PEST/USE	TOTAL ACRES
AVITROL MIXED GRAIN	STARLINGS	10.00

Total Acres Treated: 10.00

SUDAN

PRODUCT APPLIED	TARGET PEST/USE	TOTAL ACRES
LV-6	WEEDS	17.00

Total Acres Treated: 17.00

TERMITE ABATEMENT

PRODUCT APPLIED	TARGET PEST/USE	TOTAL ACRES
CHLORPYRIFOS TC	TERMITES	128.00

Total Pre-Treatment Sites: 128.00

TIMOTHY

PRODUCT APPLIED	TARGET PEST/USE	TOTAL ACRES
2,4-DAMINE 4	WEEDS	300.00
BARRAGE	ALFALFA	65.00
CLARITY	CUTWORMS	748.60
DECLARE	MITES	496.00
DECLARE	THRIP	125.00
LV-6	WEEDS	60.00
ONAGER 2E	MITES	621.00
SUPRACIDE 2E (NV SLN)	MITES	750.00
WEEDAR 64	CUTWORMS	748.60
WEEDAR 64	WEEDS	250.00

Total Acres Treated: 4,164.20

2003 PESTICIDE AND HERBICIDE APPLICATION SUMMARY, continued

TURF

PRODUCT APPLIED	TARGET PEST/USE	TOTAL ACRES
FUMITOXIN	BADGERS	1.00
FUMITOXIN	GROUND SQUIRRELS	1.00
FUMITOXIN	MOLES	3.00
ZP RODENT BAIT (OATS)	BADGERS	1.00
ZP RODENT BAIT (OATS)	GROUND SQUIRRELS	1.00
ZP RODENT BAIT (OATS)	VOLES	7.00
ZP RODENT BAIT AG	GROUND SQUIRRELS	1.00

Total Acres Treated: 15.00

UTILITY POLES

PRODUCT APPLIED	TARGET PEST/USE	TOTAL ACRES
MITC-FUME	DECAY FUNGI	521.70
OSMOPLASTIC	TERMITES	5,003.00
OSMOSE HOLLOW HEART	FUNGI/DECAY	330.00

Total Acres Treated: 10,386.00

WHEAT

PRODUCT APPLIED	TARGET PEST/USE	TOTAL CUT'S
2,4-D LV6 ESTER	WEEDS	214.00
2,4-D OPTI AMINE	WEEDS	66.80
BRONATE	WEEDS	3,714.00
BUCTRIL	WEEDS	121.00
DI-SYSTON 8	APHID	130.00
DIMETHOATE 4EC	APHID	303.00
HARMONY	WEEDS	3,714.00
LV-6	WEEDS	700.70
WEEDAR 64	WEEDS	189.00
WEEDONE LV4 EC	WEEDS	182.00

Total Cut's Treated: 9,334.50

WINTER WHEAT

PRODUCT APPLIED	TARGET PEST/USE	TOTAL ACRES
BANVEL 4	WEEDS	1,070.00
BUCTRIL	WEEDS	142.00
WEEDONE LV4 EC	WEEDS	291.00
WEEDONE LV6 EC	WEEDS	1,556.00

Total Acres Treated: 3,059.00

DIRECTORY: Cooperative Extension and Farm Services Agency (FSA) Office Locations

Nevada Cooperative Extension Offices

State Office

University of Nevada-Reno
Mail Stop 404
Reno, NV 89557-0106
(775) 784-7070

Carson City / Storey County
2621 Northgate Ln, Suite 15
Carson City, NV 89706
(775) 887-2252

Churchill County
111 Sheckler Road
Fallon, NV 89406-8951
(775) 423-5121

Clark County
2345 Red Rock, Suite 100
Las Vegas, NV 89146-3160
(702) 222-3130

East Clark County
P.O. Box 126
1897 N. Moapa Valley Blvd
Logandale, NV 89021-0126
(702) 397-2604

Douglas County
P.O. Box 338
Minden, NV 89423-0338
1329 Waterloo Lane
Gardnerville, NV 89410
(775) 782-9960

Elko County
701 Walnut
Elko, NV 89801-3347
(775) 738-7291

Wendover
P.O. Box 2409
Wendover, NV 89883
(775) 664-4359

Esmeralda / Northern Nye Co.
Old Court House
#1 Fran Kee St.
P.O. Box 231
Tonopah, NV 89049-0231
(775) 482-6794

Eureka County
P.O. Box 613
701 S. Main Street
Eureka, NV 89316-0613
(775) 237-5326

Humboldt County

1085 Fairgrounds Road
Winnemucca, NV 89445-2917
(775) 623-6304

Lander County
815 N Second Street
Battle Mtn, NV 89820-8309
(775) 635-5565

Lincoln County
P.O. Box 728
360 Lincoln Street
Caliente, NV 89008-0728
(775) 726-3109

Lyon County
P.O. Box 811
504 South Main Street
Yerington, NV 89447-0811
(775) 463-6541

Nye County (Southern)
1651 E. Calvada Blvd.
Pahrump, NV 89041
(775) 727-5532

Pershing County
P.O. Box 239
810 6th Street
Lovelock, NV 89419-0239
(775) 273-2923

Washoe County
P.O. Box 11130
5305 Mill St.
Reno, NV 89520-0027
(775) 784-4848

Washoe County / Incline Village Branch
P.O. Box 8208
865 Tahoe Blvd., Ste. 110
Incline Village, NV 89452
(775) 832-4150

White Pine County
955 Campton
Ely, NV 89301-0210
(775) 289-4459

Nevada FSA Offices

Nevada State FSA Office
1755 E Plumb Lane, Suite 202
Reno, NV 89502-3207
(775) 784-5411

Elko FSA Office
2002 Idaho Street
Elko, NV 89801-2627
(775) 738-6445
(Serves Elko & Eureka Counties)

Ely FSA Office
744 E. North Industrial Way
HC 33 Box 33453
Ely, NV 89301
(775) 289-4990
(Serves Lincoln & White Pine Counties)

Fallon FSA Office
111 Sheckler Road, Suite B
Fallon, NV 89406-8951
(775) 423-5127
(Serves Churchill, Storey & Washoe Counties)

Minden FSA Office
Hickey Building
1702 County Rd, Suite A1
Minden, NV 89423
(775) 782-3661
(Serves Douglas County and Carson City)

Lovelock FSA Office
11th & Cornell Street, Suite #1
P.O. Box 1070
Lovelock, NV 89419-1070
(775) 273-2922
(Serves Pershing County)

Winnemucca FSA Office
1200 Winnemucca Blvd., East
Winnemucca, NV 89455-2920
(775) 623-5025
(Serves Humboldt & Lander Counties)

Yerington FSA Office
215 W Bridge St, Suite 10-A
Yerington, NV 89447-0803
(775) 463-2855
(Serves Lyon, Esmeralda & Mineral Counties)

DIRECTORY: Natural Resource Conservation Service (NRCS), Nevada Department of Agriculture Office Locations

Natural Resources Conservation Service (NRCS)

State Office

5301 Longley Lane
Bldg F, Suite 220
Reno, NV 89511-1805
(775) 784-5863

Western Nevada RC&D Office

705 North Plaza, Room 203
P.O. Box 3543
Carson City, NV 89702-4061
(775) 883-2292

High Desert RC&D Office

Parc Place Professional Complex
5820 South Pecos Rd.
Building A, Suite 400
Las Vegas, NV 89120
(702) 262-9047

Daka Doyabe RC&D Office

2002 Idaho
Elko, NV 89801-2627
(775) 738-8431

Nevada Conservation Districts

333 W. Nye Lane Room 118
Carson City, NV 89706-0857
(775) 687-6977

Elko Field Office

555 W. Silver St
Elko, NV 89801-7714
(775) 738-8468

Ely Field Office

744 E. North Industrial Way
Ely, NV 89301
(775) 289-4990

Eureka Conservation District Ofc

P.O. Box 323
701 S. Main Street
Eureka, NV 89316
(775) 237-5251

Lovelock Field Office

1155 Lovelock Ave
Lovelock, NV 89419-8860
(775) 273-2134

Winnemucca Field Office

1200 Winnemucca Blvd., East
Winnemucca, NV 89445-3027
(775) 623-5025

Las Vegas Field Office

Parc Place Professional Complex
5820 South Pecos Rd
Building A, Suite 400
Las Vegas, NV 89120-3418
(702) 262-9047

Caliente Field Office

360 Lincoln Street
P.O. Box 8
Caliente, NV 89008-0008
(775) 726-3101

Fallon Field Office

111 Scheckler Road
Fallon, NV 89406-8951
(775) 423-5124

Minden Field Office

Hickey Building
1702 County Road, Suite A1
Minden, NV 89423-4460
(775) 782-3661

Reno Field Office

1201 Terminal Way, Suite 222
Reno, NV 89502-3252
(775) 784-5408

Yerington Field Office

215 West Bridge St., Suite 11-A
Yerington, NV 89447-2554
(775) 463-2265

Nevada Dept of Agriculture

Reno

Main Office
350 Capitol Hill Ave
Reno, NV 89502
(775) 688-1180

Las Vegas

District Office
2300 McLeod
Las Vegas, NV 89104
(702) 486-4690

Winnemucca

District Office
1200 E. Winnemucca Blvd
Winnemucca, NV 89445
(775) 623-6502/6501

Elko

District Office
1351 Elm St
Elko, NV 89801
(775) 738-8076

**United States Department of Agriculture
National Agricultural Statistics Service
State Statistical Offices**

Alabama	334-279-3555	Herb Vanderberry	P.O. Box 240578, Montgomery, AL 36124-0578
Alaska	907-745-4272	Suzan Benz	P.O. Box 799, Palmer, AK 99645
Arizona	602-280-8850	Steve Manheimer	230 N. First Ave, Suite 303 Phoenix, AZ 85003
Arkansas	501-228-9926	Ben Klugh	10800 Financial Centre Parkway, Little Rock, AR 72211
California	916-498-5161	Vic Tolomeo	P.O. Box 1258, Sacramento, CA 95812
Colorado	303-236-2300	Renee Picanso	P.O. Box 150969, Lakewood, CO 80215-0969
Delaware	302-698-4537	Chris Cadwallader	2320 S. Dupont Hwy., Dover, DE 19901
Florida	407-648-6013	John Witzig	P.O. Box 530105, Orlando, FL 32853
Georgia	706-546-2236	Dave Abbe	Stephens Fed. Bldg., Ste 320, Athens, GA 30601
Hawaii	808-973-2907	Mark Hudon	1428 South King Street, Honolulu, HI 96814-2512
Idaho	208-334-1507	Don Gerhardt	P.O. Box 1699, Boise, ID 83701
Illinois	217-492-4295	Brad Schwab	P.O. Box 19283, Springfield, IL 62794-9283
Indiana	765-494-8371	Greg Preston	1435 Win Hentschel Blvd, Ste B105 W. Lafayette, IN 47907
Iowa	515-284-4340	Jim Sands	210 Walnut St., Rm 833, Des Moines, IA 50309
Kansas	785-233-2230	Eldon Thiessen	P.O. Box 3534, Topeka, KS 66603-3534
Kentucky	502-582-5293	Lee Brown	P.O. Box 1120, Louisville, KY 40201
Louisiana	225-922-1362	Dave Frank	P.O. Box 65038, Baton Rouge, LA 70896-5038
Maryland	410-841-5740	Norm Bennett	50 Harry S. Truman Pkwy, Ste 202, Annapolis, MD 21401
Michigan	517-324-5300	Dave Kleweno	P.O. Box 26248, Lansing, MI 48909
Minnesota	651-296-2230	Douglas Hartwig	P.O. Box 7068, St. Paul, MN 55107
Mississippi	601-965-4575	Tommy Gregory	P.O. Box 980, Jackson, MS 39205
Missouri	573-876-0950	Gene Danekas	P.O. Box L, Columbia, MO 65205
Montana	406-441-1240	Peggy Stringer	10 West 15 th , Ste 3100, Helena, MT 59626
Nebraska	402-437-5541	Mark Harris	P.O. Box 81069, Lincoln, NE 68501
Nevada	775-972-6001	Martin Owens	P.O. Box 8880, Reno, NV 89507
New England	603-224-9639	Aubrey Davis	P.O. Box 1444, Concord, NH 03302-1444
New Jersey	609-292-6385	Becky Cross	P.O. Box 330, Trenton, NJ 08625
New Mexico	505-522-6023	Dwaine Nelson	P.O. Box 1809, Las Cruces, NM 88004
New York	518-457-5570	Steve Ropel	10B Airline Drive, Albany, NY 12235
North Carolina	919-856-4394	Bob Murphy	P.O. Box 27767, Raleigh, NC 27611
North Dakota	701-239-5306	David Knopf	P.O. Box 3166, Fargo, ND 58108
Ohio	614-728-2100	Jim Ramey	P.O. Box 686, Columbus, OH 43068-0686
Oklahoma	405-522-6190	Craig Flynn	2800 North Lincoln Blvd, Oklahoma City, OK 73152
Oregon	503-326-2131	Janice Goodwin	1220 S.W. Third Ave, Rm 1735, Portland, OR 97204
Pennsylvania	717-787-3904	Marc Tosiano	Rm G-19, 2301 N. Cameron St., Harrisburg, PA 17110
Puerto Rico	787-723-3773	Anne Cruz	P.O. Box 10163, Santurce, Puerto Rico 00908
South Carolina	803-765-5333	Bob Graham	P.O. Box 1911, Columbia, SC 29202
South Dakota	605-323-6500	Carter Anderson	P.O. Box 5068, Sioux Falls, SD 57117
Tennessee	615-781-5300	Debra Kenerson	P.O. Box 41505, Nashville, TN 37204-1505
Texas	512-916-5581	Robin Roark	P.O. Box 70, Austin, TX 78767
Utah	801-524-5003	Rick Kestle	P.O. Box 25007, Salt Lake City, UT 84125
Virginia	804-771-2493	Kevin Barnes	P.O. Box 1659, Richmond, VA 23218
Washington	360-902-1940	Ray Garibay	P.O. Box 609, Olympia, WA 98507
West Virginia	304-345-5958	Dave King	1900 Kanawha Blvd.E, Charleston, WV 25305
Wisconsin	608-224-4848	Bob Battaglia	P.O. Box 8934, Madison, WI 53708
Wyoming	307-432-5600	Dick Coulter	P.O. Box 1148, Cheyenne, WY 82003



NASS

FACT FINDERS FOR AGRICULTURE
UNITED STATES DEPARTMENT OF AGRICULTURE