

NEVADA

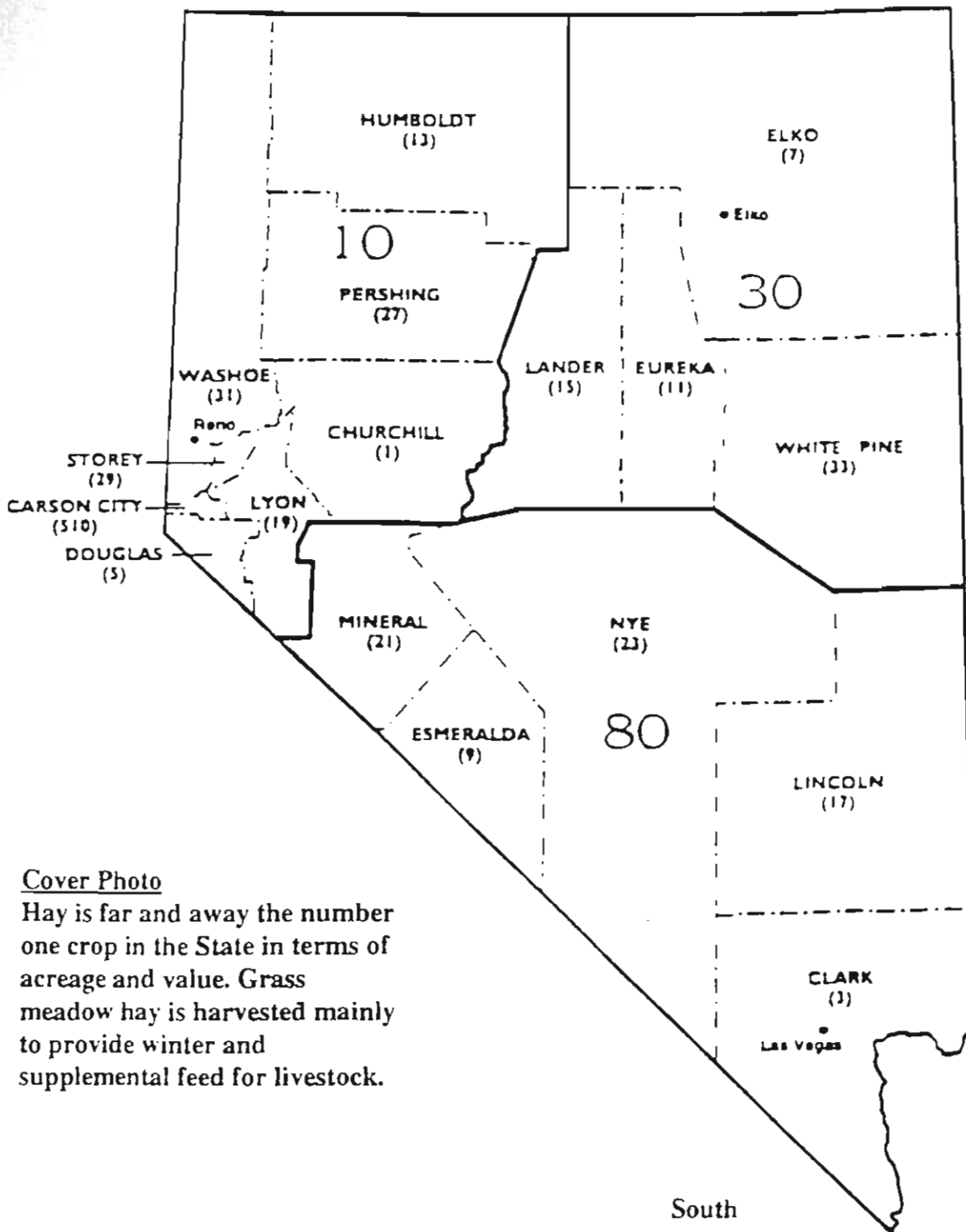


**Agricultural Statistics
1999—2000**

Nevada Crop Reporting Districts and Counties

Northwest

Northeast



Cover Photo

Hay is far and away the number one crop in the State in terms of acreage and value. Grass meadow hay is harvested mainly to provide winter and supplemental feed for livestock.

Photo by Don Gephart

Nevada Agricultural Statistics 2000

Nevada Department of Agriculture
Paul Iverson, Director

University of Nevada, Reno
College of Agriculture
David Thawley, Dean & Director

Cooperating with
U.S. Department of Agriculture
National Agricultural Statistics Service
Ron Bosecker, Administrator

Compiled by

Nevada Agricultural Statistics Service

P.O. Box 8880, Reno, NV 89507

Phone: 775-784-5584

FAX: 775-784-5766

Toll Free: 1-888-456-7211

Internet Homepage: <http://www.nass.usda.gov/nv/>

Martin J. Owens, State Statistician

Donald R. Gephart, Agricultural Statistician

Leslee R. Lohrenz, Agricultural Statistician

Candace L. Lucero, Statistical Assistant

September 2000



OFFICE OF THE GOVERNOR

KENNY C. GUINN
Governor

Dear Fellow Citizens:

Agriculture is vital to Nevada. As a basic industry, agriculture is the foundation of many of our rural communities. Nevada farmers and ranchers face many challenges and are further constrained by soil, water, and climate. Nevertheless, they are succeeding in providing Nevadans and consumers worldwide with top quality, safe and nutritious food projects. Nevada's farmers and ranchers should be recognized for their success and thanked for the stewardship they provide to our rural lands. I am grateful to our agricultural producers and to the agriculture industry as a whole, for we all share in a bounty of plentiful foods resulting from their toils.

I appreciate and support the efforts of the Nevada Agricultural Statistics Service and their partners, Nevada Department of Agriculture and the University of Nevada Reno, College of Agriculture, in this endeavor. Statistical information, such as that contained in this publication, is invaluable in the management of our government and for the industries represented in this report.

Sincerely,

A handwritten signature in black ink, appearing to read "Kenny C. Guinn".

Kenny C. Guinn
Governor

ONE HUNDRED ONE NORTH CARSON STREET
CARSON CITY, NEVADA 89701
(775) 684-5670 • FAX (775) 684-5683



Carson City Office:
251 Jeanell Drive, Suite 3
Carson City, NV 89703
Telephone (775) 684-5333
Facsimile (775) 882-5121

Las Vegas Office:
2300 McLeod Street
Las Vegas, NV 89104-4314
(702) 486-4690
Fax (702) 486-4695

DEPARTMENT OF AGRICULTURE

350 Capitol Hill Avenue
Reno, Nevada 89502-2923
Telephone (775) 688-1180 • Fax (775) 688-1178

Elko Office:
1351 Elm Street
Elko, NV 89801-3364
(775) 738-8076
Fax (775) 738-2639

Winnemucca Office:
1200 E. Winnemucca Blvd.
Winnemucca, NV 89445-2999
(775) 623-6502
Fax (775) 625-1200

To Friends of Agriculture:

The Nevada Department of Agriculture is pleased to contribute to this issue of *Agricultural Statistics*. This publication provides unbiased, accurate, and timely information.

As we enter the 21st century it is apparent that a dynamic and progressive agricultural industry is essential to sustaining Nevada's economy. Nevada farmers and ranchers serve as an important link to the past, and also as an essential element to diversify our state's economy to meet future needs.

Many current issues are affecting our agricultural industries, such as rapidly advancing technologies, urban encroachment, depressed market prices, foreign trade, invasive species, and increased environmental regulations. These issues impact ranchers and farmers in their quest to provide high quality, reasonably priced food commodities. The information collected, compiled, and distributed by the Nevada Agricultural Statistics Service provides excellent reference for the management of marketing decisions necessary to sustain our agricultural industries.

I acknowledge and thank all of the dedicated farmers and ranchers who responded to the Agricultural Statistics Service Survey.

Sincerely,

A handwritten signature in black ink that reads "Paul Iverson".

Paul Iverson,
Director



Nevada Agricultural Statistics Service

P.O. Box 8880, Reno, Nevada 89507-8880

FAX (775) 784-5766 www.nass.usda.gov/nv Phone (775)784-5584

Nevada Department of Agriculture

USDA-NASS

University of Nevada, Reno

To Our Readers:

The mission of Nevada Agricultural Statistics Service is to serve Nevada, its agriculture, and its rural communities by providing meaningful, accurate, and objective statistical information and services. Toward fulfillment of this mission, it is my pleasure to present Nevada Agricultural Statistics 1999-2000. This publication summarizes state level agricultural production, disposition, and value for the ten year period 1990-1999 and county estimates for 1998 and 1999. The information portrays the size, diversity, and direction of agriculture in our State.

Nevada has been experiencing tremendous population growth during the period covered by these statistics and we have seen much farm land near urban centers transformed into residential and industrial use. This has spawned the myth that agriculture is a dying industry in our State. This myth is dispelled by the facts revealed in these statistics. Agriculture in Nevada is very much alive, and is evolving to compete in the new global economy.

Agriculture is vital to the economies of many of our rural communities and embellishes the culture and aesthetics of our entire State. As competing interests vie for the natural resources of our State, demand for objective statistical information such as this increases. Thanks go to Nevada's farmers and ranchers whose voluntary participation in our surveys make the tabulation of this information possible. In addition, I want to thank our cooperating agencies, Nevada Department of Agriculture and University of Nevada-Reno College of Agriculture, who make this publication possible. I welcome any questions regarding these statistics and would be happy to help with additional data needs.

A handwritten signature in cursive script, reading "Martin J. Owens".

Martin J. Owens
State Statistician

TABLE OF CONTENTS

General

Nevada Facts and Figures	6
Farm Operators by Age	7
Farm Operators by Sex	8
Farms Operated by Specified Racial Groups	8
Number of Days Worked Off-Farm	9
Tenure of Operators	9
Number of Farms and Land in Farms	10
Number of Farms by County	11
Farm Production by County	12
Cash Receipts from Marketings	13
Value Added to Economy	14
Prices Received	15
Crop/Weather Summary	16
Climatological Data	18
Average Value of Farm Real Estate	41
Farm Labor and Wage Rates	42

FIELD CROPS

Annual Crop Summary	20
Record Highs and Lows	21
Winter Wheat: Acreage, Yield, Prod.	22
Spring Wheat: Acreage, Yield, Prod.	23
Barley: Acreage, Yield, Production	24
Hay: Acreage, Yield, Production	25
Hay Stocks on Farms	26
Hay Production by County	27
Hay Exported to California	28

SPECIALTY CROPS

Alfalfa Seed: Acreage, Yield, Prod.	29
Onions: Acreage, Yield, Prod.	30
Garlic: Acreage, Yield, Prod.	30
Potatoes: Acreage, Yield, Prod.	31
Mint: Acreage, Yield, Prod.	31

LIVESTOCK - GENERAL

Number of Farms with Livestock	12
Record Highs and Lows	21
Honey Production	38

CATTLE

Inventory, Supply and Disposition	32
Production and Income	33
Inventory by County	33
Number on Feed	34
Commercial Cattle Slaughter	34

SHEEP AND LAMBS

Inventory, Supply and Disposition	35
Production and Income	36
Inventory by County	36
Wool Production and Value	36

HOGS AND PIGS

Inventory, Supply, and Disposition	37
Production and Income	37

DAIRY AND DAIRY PRODUCTS

Milk Cows, Production, and Milkfat	39
Cows Milked, Production by Quarter	39
Milk Utilization and Returns	39
All Milk Prices and Average Fat Test	40
Milk Cows and Production by County	40

PESTICIDE AND HERBICIDE USE

Aerial and Ground Application	43
-------------------------------	----

DIRECTORY

Cooperative Extension and FSA Directory	52
--	----

STATE STATISTICAL OFFICES

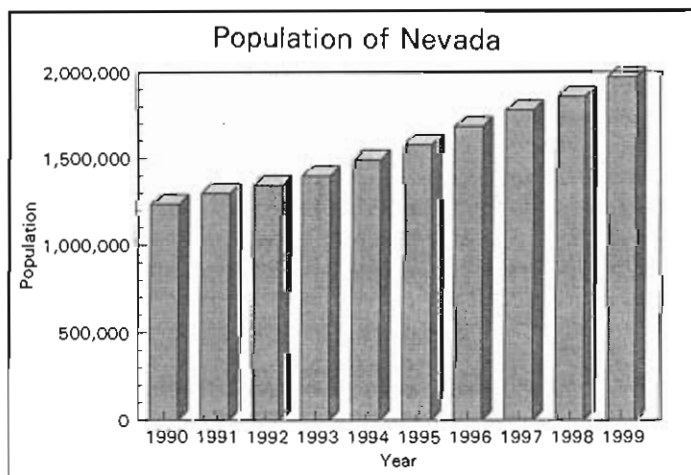
State, Telephone, Address	53
---------------------------	----

NEVADA FACTS AND FIGURES

Population of Nevada's Counties and Incorporated Cities¹

County	1995	1996	1997	1998	1999
Carson City	46,770	48,860	50,410	51,860	52,620
Churchill	21,640	22,580	23,860	24,020	25,310
Clark	1,036,290	1,115,940	1,192,200	1,255,200	1,353,540
Douglas	35,880	37,480	39,590	41,420	42,590
Elko	43,050	45,630	47,710	49,230	50,620
Esmeralda	1,630	1,490	1,460	1,420	1,520
Eureka	1,580	1,650	1,660	1,640	1,930
Humboldt	16,270	16,460	17,520	17,970	18,090
Lander	6,440	6,710	7,030	7,040	7,010
Lincoln	4,110	4,020	4,110	4,190	4,250
Lyon	26,580	28,480	30,370	32,200	34,150
Mineral	6,700	6,810	6,860	6,620	6,450
Nye	23,050	25,240	27,610	29,730	33,550
Pershing	5,140	6,260	6,600	7,270	7,460
Storey	3,200	3,320	3,520	3,670	3,740
Washoe	291,050	303,240	308,700	311,350	323,670
White Pine	9,770	10,400	10,640	10,960	11,150
Total	1,579,150	1,684,570	1,779,850	1,855,790	1,967,650

¹ Source: Nevada Department of Taxation and Nevada State Demographer, University of Nevada, Reno. Consistent Methodology Series used for estimations in 1998; 1995-1997 have been recalculated for consistency.



Nevada has been the fastest growing state in the Nation for the past several years. Projections by the Nevada State Demographer's Office indicate the State population will likely double in the next 20 years. Over two-thirds of Nevada's population is concentrated in largely urbanized Clark County, where the population of Las Vegas and commuting areas has skyrocketed. Population growth in rural Nevada has been much less dramatic, and in some areas has shown decline.

CENSUS OF AGRICULTURE

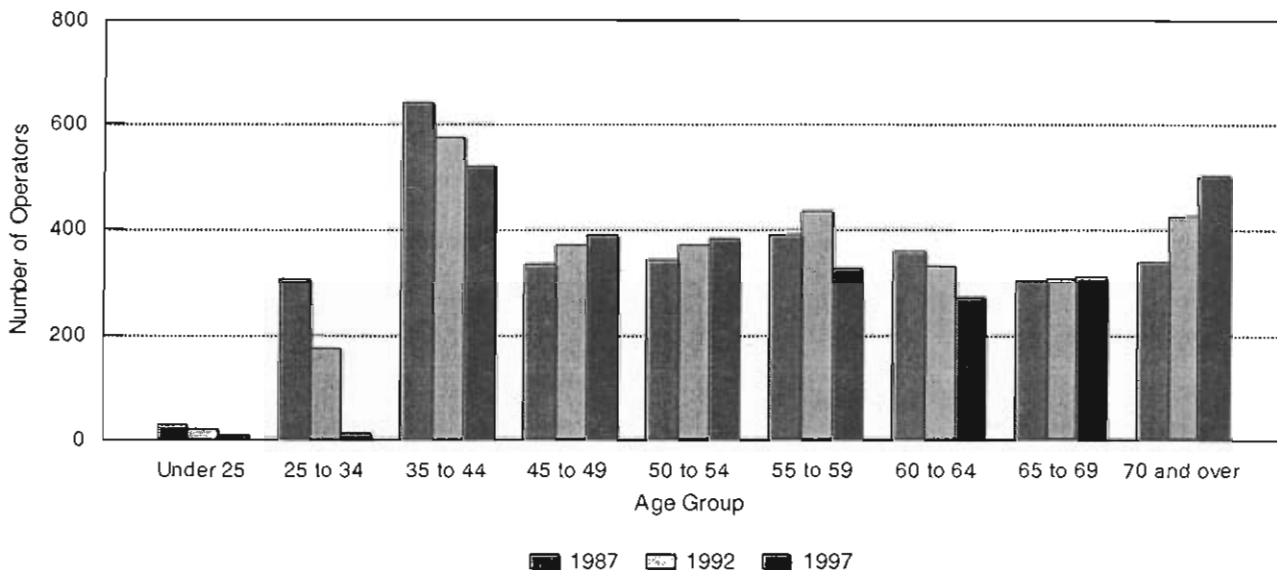
Pages 7-10 of this publication contain demographic information on Nevada farmers and ranchers taken from the most recent Census of Agriculture. The 1997 Census was the first to be conducted by this office and the United States Department of Agriculture; earlier Censuses were conducted by the Census Bureau of the Department of Commerce.

- The Census of Agriculture is a complete accounting of United States agricultural production.
- The Census is the only source of uniform, comprehensive agricultural data for every county in the Nation.
- The Census includes as a farm every place from which \$1,000 or more of agricultural products were produced and sold or normally would have been sold during the census year.
- The Census of Agriculture is taken every five years covering the years ending in "2"; and "7."

FARM OPERATORS BY AGE: Nevada, 1987, 1992, and 1997

Age	1987		1992		1997	
	Number	Percent	Number	Percent	Number	Percent
Under 25	27	.9%	20	.7%	8	.3%
25-34	305	10.1%	169	5.7%	141	.5%
35-44	641	21.2%	573	19.2%	516	19.1%
45-49	334	11.0%	367	12.3%	387	14.3%
50-54	340	11.2%	367	12.3%	379	14.0%
55-59	386	12.8%	431	14.5%	324	12.0%
60-64	356	11.8%	327	11.0%	270	10.0%
65-69	301	9.9%	303	10.2%	307	11.4%
70 and over	337	11.1%	423	14.2%	497	18.4%
Total	3,027	100.0%	2,980	100.0%	2,829	100.0%

Number of Operators by Age



FARM OPERATORS BY SEX: United States and Nevada, 1987, 1992, and 1997

Year	United States				Nevada			
	Male		Female		Male		Female	
	Number	Percent	Number	Percent	Number	Percent	Number	Percent
1987	1,956,118	93.7%	131,641	6.3%	2,693	89.0%	334	11.0%
1992	1,780,144	92.4%	145,456	7.6%	2,540	87.9%	350	12.1%
1997	1,746,757	91.4%	165,102	8.6%	2,423	85.6%	406	14.4%

FARMS OPERATED BY SPECIFIED RACIAL GROUPS: Nevada, 1992 and 1997

Racial Group	1992		1997		
	Number	Percent ³	Number	Percent ³	Current Acres
Black	6	0.2%	2	0.1%	(D)
American Indian	94	3.3%	112	4.0%	1,401,850
Asian or Pacific Islander	6	0.2%	2	0.1%	(D)
Other ¹	31	1.1%	41	1.4%	14,650
Total	137	4.8%	157	5.6%	1,416,837
Hispanic ²	86	3.0%	108	3.8%	83,411

¹ Other is a classification for respondents who reported NOT being White, Black, American Indian, Asian or Pacific Islander.

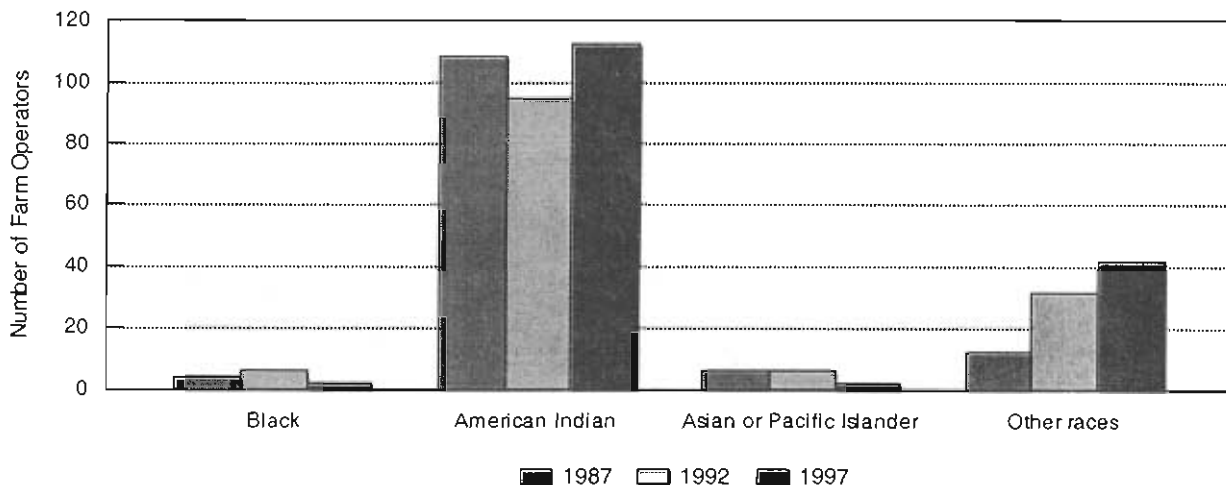
² Operators of Hispanic origin exist in all of racial groups listed and were also tabulated according to the race reported.

³ The percent is the number of operators divided by total number of farms, therefore percentages do not add up to 100.

(D) Withheld to avoid disclosing data for individual farms.

Farms Operated by Specific Racial Groups

1987, 1992, & 1997



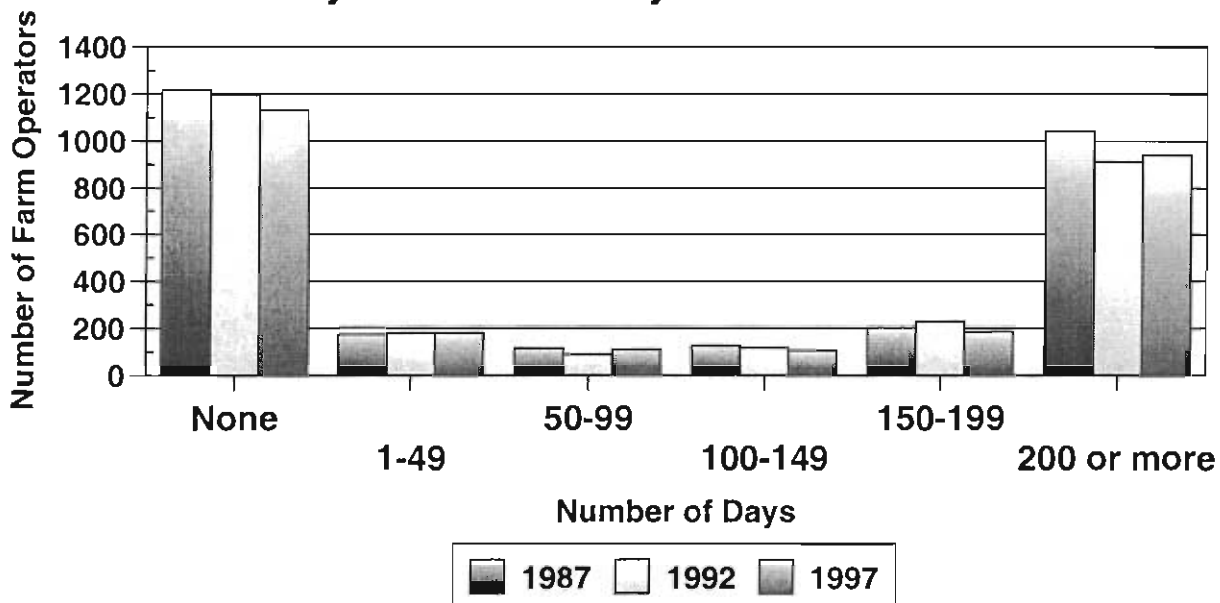
TENURE OF OPERATORS: Nevada, 1987, 1992, and 1997

Tenure	1987		1992		1997	
	Number	Percent	Number	Percent	Number	Percent
All Farms	3,027	--	2,890	--	2,829	--
Full Owners	2,214	73.1%	2,110	73.0%	2,095	74.1%
Part Owners	542	17.9%	509	17.6%	492	17.4%
Tenants	271	9.0%	271	9.3%	242	8.5%

NUMBER OF DAYS WORKED OFF FARM: Nevada, 1987, 1992, and 1997

Number of Days	1987		1992		1997	
	Number	Percent	Number	Percent	Number	Percent
None	1,217	40.2%	1,192	41.2%	1,131	40.0%
1-49	172	5.7%	178	6.2%	178	6.3%
50-99	114	3.8%	88	3.0%	109	3.9%
100-149	125	4.1%	116	4.0%	105	3.7%
150-199	201	6.6%	226	7.8%	184	6.5%
200 or more	1,042	34.4%	910	31.5%	939	33.2%
Not Reported	156	5.2%	180	6.2%	183	6.5%

**Number of Farm Operators
by Number of Days Worked Off Farm**



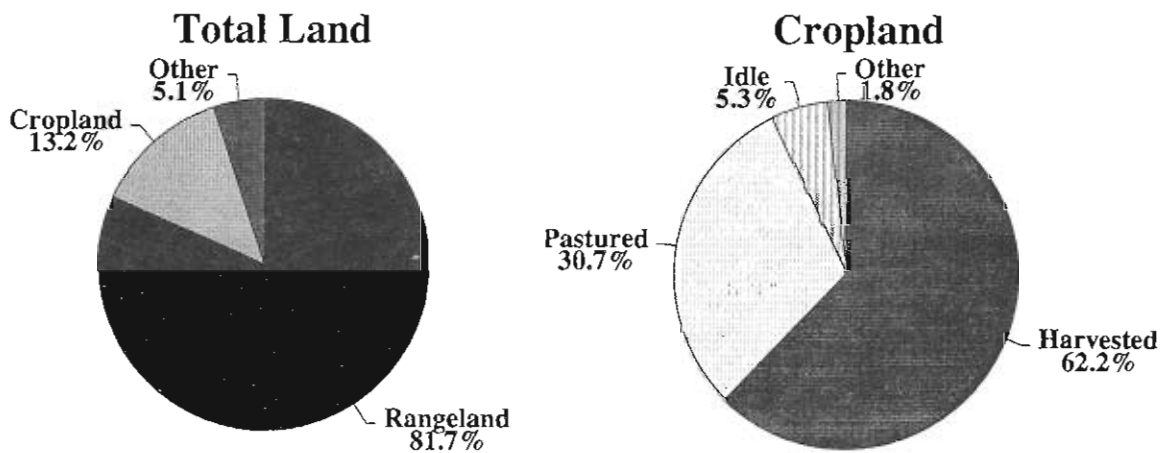
NUMBER OF FARMS AND LAND IN FARMS AND RANCHES: 1990-99^{/1}

Year	Nevada			United States		
	Number of Farms	Average Size of Farms	All Land in Farms	Number of Farms	Average Size of Farms	All Land in Farms
	<i>Actual #</i>	<i>Acres</i>	<i>000 Acres</i>	<i>000's</i>	<i>Acres</i>	<i>000 Acres</i>
1990	2,500	3,560	8,900	2,146	460	986,850
1991	2,500	3,560	8,900	2,117	464	981,736
1992	2,500	3,560	8,900	2,108	464	978,503
1993 ^{/2}	3,100	2,258	7,000	2,202	440	968,845
1994	3,100	2,258	7,000	2,198	440	965,935
1995	3,000	2,333	7,000	2,196	438	962,515
1996	3,000	2,300	6,900	2,191	438	958,675
1997	3,000	2,300	6,900	2,191	436	956,010
1998	3,000	2,300	6,900	2,191	435	953,500
1999	3,000	2,267	6,800	2,194	432	947,340

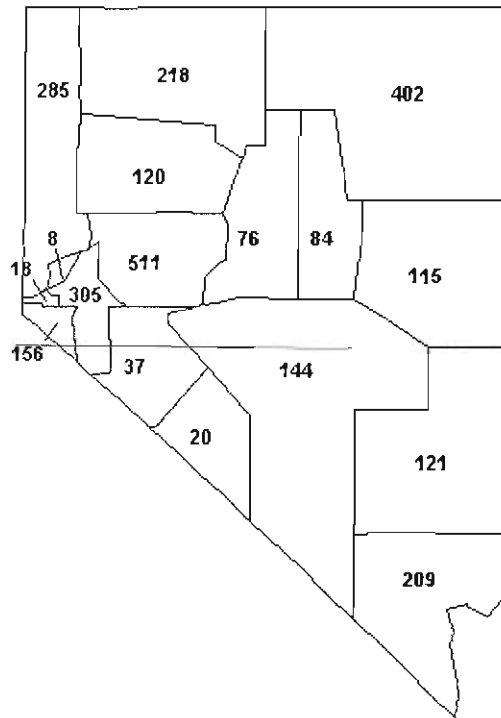
^{/1} Farm is defined as a place with annual sales of agricultural products of \$1,000 or more.

^{/2} Level change in number of farms and land in farms is associated with the results of the Census of Agriculture. Revisions were not permitted to earlier years.

Utilization of Land in Farms and Ranches Nevada



NUMBER OF FARMS BY COUNTY: Nevada ¹



NUMBER OF FARMS BY COUNTY: Nevada ¹

County/State	Number of Farms	Land in Farms in Acres	Average Farm Size in Acres
Carson City	18	7,224	401
Churchill	511	129,058	253
Douglas	156	90,372	579
Humboldt	218	733,418	3,364
Lyon	305	174,448	572
Pershing	120	119,435	995
Storey	8	(D)	(D)
Washoe	285	772,115	2,709
Elko	402	2,855,472	7,103
Eureka	84	214,966	2,559
Lander	76	486,017	6,395
White Pine	115	247,446	2,152
Clark	209	70,741	338
Esmeralda	20	27,454	1,373
Lincoln	121	48,897	404
Mineral	37	(D)	(D)
Nye	144	85,534	594
State	2,829	6,409,288	2,266

¹ 1997 Census of Agriculture Vol. 1 Geographic Area Series Part 28, Nevada State and County Data
(D) Withheld to avoid disclosing data for individual farms.

NUMBER OF FARMS WITH LIVESTOCK^{/1}: Nevada and United States, 1985-99

Year	Nevada				United States			
	Cattle	Milk	Sheep	Hogs	Cattle	Milk	Sheep	Hogs
	----- Actual Number -----				----- 000's -----			
1985	1,700	300	270	180	1,487.8	269.1	117.4	388.6
1986	1,700	300	300	170	1,438.6	249.2	114.8	346.1
1987	1,700	300	300	150	1,396.5	227.9	113.6	328.6
1988	1,700	290	300	150	1,535.5	216.1	112.3	322.6
1989	1,700	280	300	150	1,319.4	202.9	109.4	300.9
1990	1,700	270	300	140	1,284.0	192.7	105.6	268.1
1991	1,700	260	350	140	1,242.3	180.6	101.2	247.1
1992	1,700	250	350	140	1,226.9	170.5	97.9	240.2
1993	1,700	230	350	140	1,213.8	157.2	92.6	218.1
1994	1,700	200	350	140	1,197.3	148.1	86.1	196.0
1995	1,700	200	350	140	1,190.6	139.7	79.9	168.5
1996	1,700	200	350	140	1,176.7	131.0	76.6	142.4
1997	1,700	150	350	110	1,148.1	123.7	72.7	122.2
1998	1,700	150	300	110	1,115.7	113.8	68.6	117.2
1999	1,700	150	300	100	1,096.0	98.5	66.8	111.2

^{/1} Estimated number of farms with one head or more of species.

SUMMARY OF FARM PRODUCTION BY COUNTY: Nevada 1997

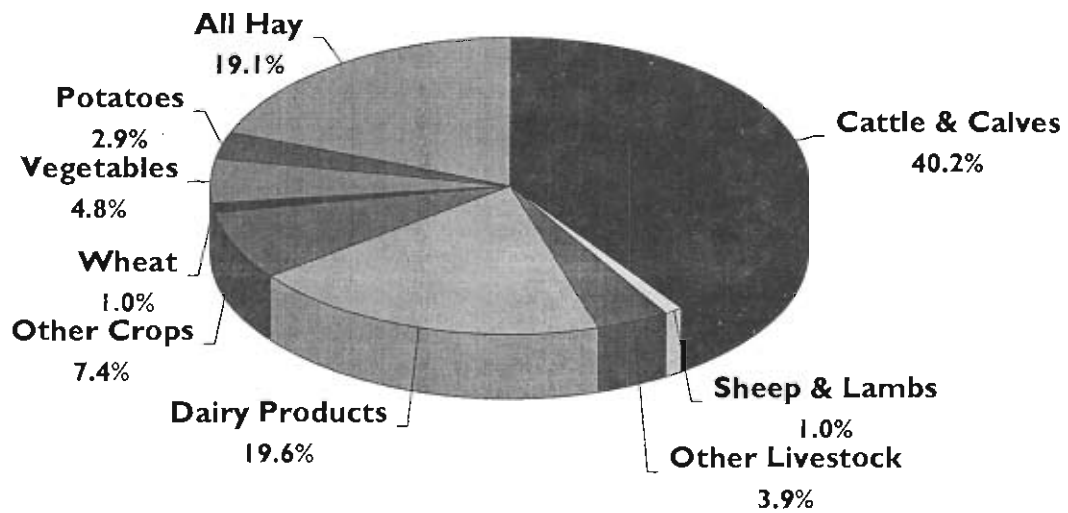
County	Market Value of Ag Products Sold	Total Farm Production Expenses ^{/1}	Net Cash Return
Churchill	38,058	30,978	6,312
Clark	18,926	14,683	2,742
Douglas	8,796	8,835	(298)
Elko	49,228	35,781	13,163
Esmeralda	4,016	3,862	154
Eureka	13,133	8,590	4,543
Humboldt	57,315	44,126	12,872
Lander	12,794	10,202	2,592
Lincoln	7,317	5,153	2,541
Lyon	53,959	40,525	13,250
Mineral	1,809	1,554	255
Nye	27,792	20,053	7,625
Pershing	32,679	27,539	5,960
Storey	93	114	(21)
Washoe	22,518	17,315	4,439
White Pine	8,236	6,393	1,442
Carson City	198	336	(138)
State	356,565	276,040	77,433

^{/1} Data based on a sample of farms. 1997 Census of Agriculture Vol. 1 Geographic Area Series Part 28, Nevada State and County Data

CASH RECEIPTS FROM FARM MARKETINGS: By Commodities, Nevada 1997-99

Item	1997		1998		1999	
	000\$'s	Percent	000\$'s	Percent	000\$'s	Percent
Cattle & Calves	112.3	34.5%	114.9	33.0%	134.5	40.2%
Dairy Products	56.0	17.2%	68.6	19.7%	65.4	19.6%
Sheep & Lambs	3.1	0.9%	2.9	0.8%	3.3	1.0%
All other Livestock & Products	15.2	4.7%	12.5	3.6%	13.1	3.9%
Total Livestock & Products	186.6	57.4%	198.8	57.1%	216.3	64.7%
Wheat	6.5	2.0%	4.1	1.2%	3.4	1.0%
All Hay	74.5	22.9%	82.3	23.7%	63.9	19.1%
Vegetables	19.0	5.8%	18.6	5.3%	16.1	4.8%
Potatoes	9.9	3.1%	12.7	3.6%	9.7	2.9%
All Other Crops	28.9	8.9%	31.6	9.1%	24.9	7.4%
Total Crops	138.8	42.6%	149.2	42.9%	118.0	35.3%
Total All Commodities	325.4	100.0%	348.0	100.0%	334.3	100.0%

**Cash Receipts from Farm Marketings
Nevada, 1999**



**VALUE ADDED TO THE U.S. ECONOMY BY THE AGRICULTURAL SECTOR:
Nevada, 1995-1999**

The value-added format is now used to present the income accounts, replacing the traditional net farm income format. The underlying accounting concepts are the same under both formats and the value for net farm income is identical. Changes in commodity production is the cause of most of the volatility in the income accounts, and the presence of more disaggregated components under the value-added format makes it much easier to discern what forces are driving the changes and trends in farm income. In addition, the value-added approach to the sector accounting has the advantage of being the format accepted and utilized internationally, thereby enabling comparison across countries.

Item	1995	1996	1997	1998	1999
----- Thousand Dollars -----					
Final Agricultural Sector Output ¹	339,531	352,325	357,934	393,390	398,768
Final Crop Output	134,278	145,288	140,428	151,797	120,199
Home Consumption	165	171	171	171	171
Value of Inventory Adjustment ²	7,636	6,688	1,498	2,457	2,039
Crops	126,477	138,429	138,759	149,169	117,989
Final Animal Output	170,616	173,038	183,009	200,381	218,953
Home Consumption	1,525	1,339	1,613	1,900	2,152
Value of Inventory Adjustment	(1,477)	9,988	(5,202)	(359)	518
Livestock and Products	170,568	161,711	186,598	198,840	216,283
Service and Forestry	34,637	33,999	34,497	41,211	59,615
Gross Imputed Rental Value of Farm Dwelling	22,530	21,896	23,031	25,086	44,591
Net Government Transactions	(9,165)	(11,280)	(12,103)	(11,728)	(11,381)
Direct Government Payments	4,265	2,605	2,133	2,675	2,674
Farm Origin Outlays	59,939	64,157	68,362	68,259	69,120
Feed Purchased	37,689	40,355	43,779	39,357	34,552
Livestock and Poultry Purchased	17,348	18,134	18,066	22,737	27,786
Seed Purchased	4,902	5,668	6,517	6,165	6,782
Manufactured Inputs	41,665	47,807	45,509	44,553	44,656
Fertilizers and Lime	9,170	10,358	12,271	12,062	11,880
Pesticides	4,661	5,165	5,832	6,109	5,762
Petroleum Fuel and Oils, Electricity	12,379	14,504	15,196	13,634	14,102
Other Intermediate Expenses	80,894	81,847	89,182	91,104	88,559
Repair and Maintenance of Capital Items	18,033	20,326	19,735	20,770	21,353
Capital Consumption	39,845	41,969	43,383	44,460	45,428
Factor Payments	65,293	64,406	71,260	72,073	74,585
Net Rent Received by Nonoperator Landlord	1,307	1,260	1,848	1,802	2,223
Employee Compensation (Total Hired Labor)	44,931	45,785	52,446	53,035	54,436
Real Estate and Non Real Estate Interest	19,055	17,361	16,966	17,236	17,926
Net Farm Income ¹	42,730	40,860	28,136	61,213	65,039

Source: Economic Indicators of the Farm Sector, State Financial Summary, USDA-ERS.

¹Final sector output is the gross value of the commodities and services produced within a year.

Net value-added is the sector's contribution to the National economy and is the sum of the income from production earned by all factors-of-production.

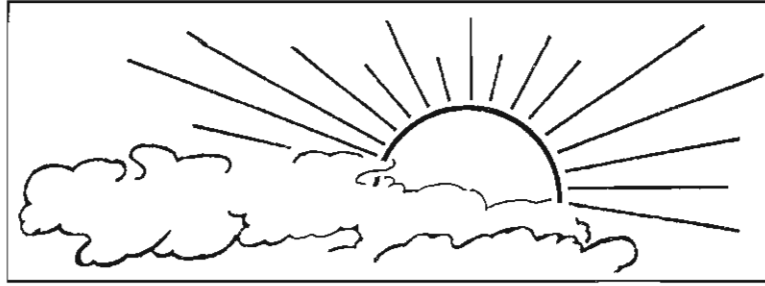
Net farm income is the farm operator's share of income from the sector's production activities. The concept presented is consistent with that employed by the Organization for Economic Cooperation and Development.

²A positive value of inventory change represents current-year production not sold by December 1. A negative value is an offset to production from prior years included in current-year sales.

PRICES RECEIVED FOR SPECIFIED PRODUCTS: By Month, Nevada, 1995-99

Year	Jan.	Feb.	Mar.	Apr.	May	Jun.	Jul.	Aug.	Sept.	Oct.	Nov.	Dec.
----- (Dollars Per Cwt.) -----												
Steers and Heifers												
1995	61.60	66.00	65.30	65.50	59.30	60.00	59.20	57.50	58.30	53.40	56.90	50.30
1996	54.20	51.30	54.60	39.10	43.70	55.00	44.17	50.30	49.10	50.40	51.20	48.90
1997	59.20	62.30	58.20	61.60	70.10	66.60	66.50	67.20	65.20	61.20	68.10	72.20
1998	66.10	73.60	59.50	69.70	68.20	63.70	63.60	63.50	67.60	60.60	65.40	66.20
1999	71.70	69.90	74.50	75.30	67.70	77.10	77.20	77.80	78.70	74.10	77.70	77.10
Cows												
1995	37.80	37.30	39.40	40.00	33.70	33.80	36.60	35.70	35.50	33.60	31.40	22.20
1996	34.00	32.80	32.20	28.40	30.20	47.53	30.70	33.90	33.80	36.60	35.70	35.50
1997	28.50	32.70	38.40	43.40	43.30	42.00	42.20	39.90	36.00	34.30	33.20	33.60
1998	33.40	34.50	36.30	35.70	36.40	37.30	36.50	36.00	33.40	31.40	30.20	31.10
1999	33.50	34.60	35.40	35.70	36.20	35.50	36.50	36.00	34.50	33.80	33.10	34.50
Calves												
1995	68.60	73.40	77.20	76.30	67.90	66.80	74.30	64.10	51.80	57.10	61.30	56.50
1996	60.80	58.00	58.00	51.70	54.70	50.10	52.00	49.10	53.80	57.20	60.20	56.10
1997	64.90	68.40	68.80	72.20	81.30	74.40	73.20	72.10	79.10	80.50	79.30	78.20
1998	78.60	81.10	82.60	74.80	68.50	79.50	70.10	60.70	72.70	71.80	73.20	70.10
1999	82.70	82.10	88.80	82.50	83.90	91.70	93.40	92.50	90.90	87.20	87.60	89.60
----- (Dollars per Ton) -----												
Alfalfa Hay												
1995	95.00	99.00	97.00	100.00	95.00	95.00	98.00	96.00	96.00	100.00	100.00	98.00
1996	102.00	93.00	92.00	95.00	93.00	103.00	100.00	97.00	99.00	96.00	97.00	104.00
1997	104.00	117.00	114.00	116.00	119.00	105.00	105.00	108.00	102.00	100.00	106.00	111.00
1998	107.00	109.00	111.00	105.00	106.00	116.00	117.00	119.00	107.00	99.00	103.00	101.00
1999	100.00	89.00	80.00	75.00	72.00	67.00	91.00	87.00	84.00	82.00	86.00	81.00
Other Hay												
1995	85.00	85.00	85.00	88.00	85.00	85.00	85.00	90.00	95.00	84.00	95.00	75.00
1996	100.00	80.00	74.00	85.00	98.00	55.00	75.00	92.00	79.00	64.00	85.00	84.00
1997	85.00	100.00	85.00	90.00	86.00	78.00	85.00	85.00	90.00	87.00	85.00	95.00
1998	95.00	90.00	95.00	91.00	93.00	102.00	108.00	90.00	110.00	85.00	95.00	95.00
1999	85.00	65.00	87.00	80.00	70.00	69.00	81.00	76.00	80.00	76.00	80.00	80.00
All Hay												
1995	94.00	98.00	96.00	99.00	94.00	94.00	97.00	95.00	96.00	98.00	100.00	96.00
1996	102.00	92.00	90.00	94.00	94.00	96.00	98.00	97.00	97.00	92.00	95.00	101.00
1997	101.00	115.00	110.00	111.00	116.00	102.00	103.00	106.00	101.00	99.00	104.00	109.00
1998	106.00	107.00	109.00	104.00	105.00	115.00	116.00	116.00	107.00	98.00	102.00	100.00
1999	99.00	87.00	81.00	76.00	72.00	67.00	90.00	86.00	84.00	81.00	85.00	81.00

1999 CROP/ WEATHER SUMMARY



January: Weather was warmer and drier than normal. Storms arrived mid-month bringing snow to the mountains and rain to the lowlands. Southern Nevada remained mostly dry. Temperatures turned sharply colder at the end of the month and averaged well below normal at most northern locations. Outlook for irrigation water supplies was much improved by the mid-month precipitation. Hay shipments slower than usual as some growers awaited market improvement. Onion, potato shipping out of storage continued. Crops and livestock wintered well. Main farm/ranch activities: Livestock feeding and marketing, hay marketing, onion and potato shipping, equipment maintenance.

February: Southern and eastern Nevada was warm and dry, while several storms visited the north. The North portion experienced below normal temperatures the second week of the month. Small storm systems brought only slight amounts of precipitation, with the majority of precipitation falling in the northeastern portion of the state. Snow pack was above normal. Irrigation began in south and central regions. Calving, lambing, and shearing were underway. Main farm/ranch activities: Ditch burning, field preparation, calving, lambing, and shearing.

March: Temperatures averaged above normal statewide. A brief storm system passed through the northern portion of the state leaving only slight precipitation. Warmer temperatures brought new forage growth. The snow pack was above normal, for adequate irrigation water. Irrigation continued in southern and central portions of the state. Onion planting had commenced. Preparation of fields for spring grain planting underway. Some pre-emergent herbicides applied. Calving, lambing, and shearing continued. Main farm/ranch activities: Irrigating, onion planting, field preparation, ditch burning, calving, lambing, and shearing.

April: Below normal temperatures were predominant throughout the State the first part of the month. The North received a storm the first week which brought precipitation; most in the form of snow. Normal temperatures mid-month, accompanied with precipitation in the South. Temperatures varied greatly the last week; above normal early on with cooler temperatures near freezing in the last part. The return of warmer weather helped alfalfa and range forage growth. Crop conditions remained good to excellent. Potato planting began. Herbicide and fertilizer application continued. Calving and lambing neared completion, while branding, vaccinating, and shearing continued. Movement of livestock to spring ranges was underway. Main farm/ranch activities: Fertilization, irrigating, spraying, planting, ditch burning, lambing, calving, shearing, branding, vaccinating, and movement of livestock to spring pasture.

May: The month started out cool with below normal temperatures and slight precipitation statewide from seasonal thunder-storms. Late month, evening thunderstorms left significant precipitation in Northern Nevada and caused some small range fires. Below normal temperatures early on slowed plant growth and germination. Range conditions remained good. Planting wrapped up, while irrigation, fertilizing, and spraying continued. Hay and grain crops in good condition. Potatoes started to germinate and onion crops were progressing well. Alfalfa harvest began statewide. Calving and lambing completed; branding and vaccinating wrapped up. Livestock moved to summer range. Main farm/ranch activities: irrigating, planting, spraying, fertilizing, servicing equipment, cutting alfalfa, working and moving livestock to summer ranges.

June: The State experienced below normal temperatures in the early half of the month and above normal, summer-like conditions the latter half. Precipitation fell throughout the State with totals well over one inch in the northern and east-central portions of the State. Irrigation water supply remained adequate with some local surpluses reported. Winter freeze damage reported for garlic crops. First cutting of alfalfa half completed in most of the State. Vegetable crops reported in good condition. Range conditions continued to be in the good range. Warm weather had grain crops heading. Most livestock moved to summer ranges. Main farm/ranch activities: Haying, irrigating, equipment repairs, cultivating, spraying, working and moving livestock.

1999 CROP/ WEATHER SUMMARY cont.

July: Northern Nevada had below normal temperatures throughout the first week, with only trace amounts of precipitation. In the central and southern portions of the State, above normal temperatures persisted with no precipitation. Weather varied greatly throughout the State mid month. Central parts of the State experienced above normal temperatures, while the northern and southern parts had below normal temperatures. The last part of the month, was dry with slightly below normal temperatures. First cutting of alfalfa was completed and second cutting neared completion throughout the State. Cutting of other hay was underway. Grasshoppers were spotted in alfalfa fields and on range lands. Grain crops had headed and were beginning to turn color. Potatoes had bloomed and garlic harvest began. Corn had tasseled and sweet corn was ready for picking. Livestock continued to graze the summer ranges. Main farm/ranch activities: Irrigating,, haying, grasshopper patrol, spraying weeds, applying pesticides, putting out bees for alfalfa, checking and moving livestock, topping garlic.

August: Temperatures were below normal the first part of the month. Widespread rainfall the second week helped extinguish wildfires in the North. Mid-month, temperatures varied and thunder showers continued throughout the State. Most irrigation water sources remained adequate. Grasshopper infestations were severe in some northern localities. Cutting of other types of hay was in full swing. Harvest of sweet corn was completed; significant bird damage was reported. Second cutting of alfalfa wrapped up and third cutting continued with some rain damage reported. Grain, onion, garlic and mint harvest was active. Preparations for digging potatoes and harvesting alfalfa seed were underway. Cattle were being gathered and fences repaired following the fires. Main farm/ranch activities: Hay and grain harvest, vegetable and alfalfa seed harvest, fall planting of alfalfa, gathering livestock.

September: The first week temperatures turned sharply cooler with much of northern Nevada experiencing the first killing frost of the season. Mid-month, temperatures turned slightly above normal throughout most of the state. Scattered showers brought precipitation to most regions and temperatures cooled the last week. Harvest of other hay neared completion. Grain harvest was completed and alfalfa seed harvest was near completion. Onion and onion seed harvest was in full force. Fourth cutting of alfalfa hay continued. Potato digging was in full force, frost had halted potato development. Swathing of mint for distillation continued. Garlic harvest was in full swing. Pasture and range condition remained good despite seasonal drying. Rangeland restoration planning for acreage burned was underway. Gathering of livestock scattered by wildfires and movement of livestock due to burned range lands was observed. Cattle were worked and weaning began. Main farm/ranch activities: Hay, grain, and alfalfa seed harvest, garlic, onion, and potato digging, and working cattle.

October: Temperatures dipped below freezing in the Northern portion of the State early in the month. The weather warmed up during the middle part of the month, then dropped again at month's end. Very little precipitation was reported statewide. Alfalfa hay harvest was completed. Fall planting of winter wheat, winter barley and new alfalfa fields completed and winter crops had begun germination. Aided by dry weather, potato harvest finished ahead of schedule. Harvest of field crops completed statewide and fall tillage of fields continued. Cattle gathered for weaning and pregnancy checks and moved to fall/winter range. Main farm/ranch activities: Irrigation, fall planting, harvest of alfalfa, burning seed fields, moving and working livestock, winter preparations, fire rehabilitation, fall maintenance, fence repairs.

November: Temperatures averaged above normal until mid-month, turning sharply colder as storm systems passed across the state the second half of the month. Precipitation totals were limited to less than an inch at most locations and no precipitation fell in parts of the South. Precipitation totals for the water year remained well below normal, raising concerns over next year's water supplies. Fall tillage and planting was complete. Livestock marketing and movement to winter range continued. Main farm/ranch activities: Fall maintenance, livestock shipment, fence repairs.

December: December was mostly dry across Nevada with very light snow falling in the North and traces of rain in the South. Temperatures averaged a few degrees above normal for the month at most locations. Mountain snow accumulations lag well behind normal statewide, with nearly all stations currently at less than 50 percent of normal. Some late livestock marketing continued and hay shipping was active. Onion marketing and potato processing continued. Winter livestock feeding was minimal due to open weather. Main farm/ranch activities: Equipment maintenance, livestock shipment, fence repairs, crop marketing.

CLIMATOLOGICAL DATA: Selected Stations, 1998-99

ANNUAL PRECIPITATION, FROST FREE DAYS: Selected Stations, 1998-99 ¹

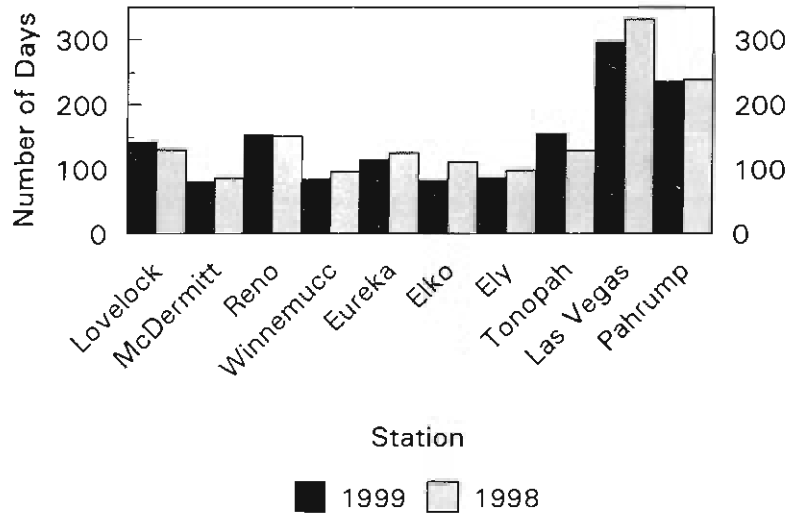
		Annual Precipitation			Frost Free Days ²	
Station	Elevation	1998	1999	Normal	1998	1999
	--- feet ---	----- Inches -----			----- Days -----	
Northwest						
Carson City	4,651	15.08	6.77	na	127	129
Fallon	3,966	na	3.45	5.32	na	137
Kings River Valley	4,240	na	6.02	8.62	na	107
Lovelock	3,975	16.39	2.14	5.83	131	143
McDermitt	4,527	15.54	4.24	9.74	87	81
Orovada	4,200	na	6.72	na	na	83
Paradise Valley	4,675	na	7.45	na	87	83
Reno	4,404	12.03	4.42	7.53	152	154
Winnemucca	4,301	15.61	5.33	8.23	97	85
Yerington	4,376	na	2.51	5.52	na	154
Northeast						
Austin	6,605	na	na	na	126	113
Battle Mountain	4,450	16.79	7.54	8.23	127	na
Elko	5,050	12.43	7.55	9.93	112	83
Ely	6,253	12.23	6.61	10.13	99	87
Eureka	3,965	12.11	7.60	13.18	126	115
Wells	5,700	12.84	8.12	10.58	106	87
South Central						
Caliente	4,400	14.13	6.30	9.57	171	166
Dyer	4,899	8.48	6.84	na	146	169
Hawthorne	4,220	7.36	5.81	na	182	na
Pioche	6,180	26.35	8.63	13.19	136	116
Tonopah	5,427	9.42	na	5.69	130	156
Extreme South						
Amargosa	2,450	8.71	2.35	na	217	227
Las Vegas	2,162	7.35	3.73	4.13	331	296
Laughlin	605	na	2.17	na	na	na
Mesquite	1,570	10.09	6.17	na	236	235
Overton	1,250	8.16	2.63	na	254	285
Pahrump	2,670	8.49	3.64	4.76	239	236

NA = Data not available.

¹ Climatological Data Annual Summary, Nevada - Volume 113, Number 13

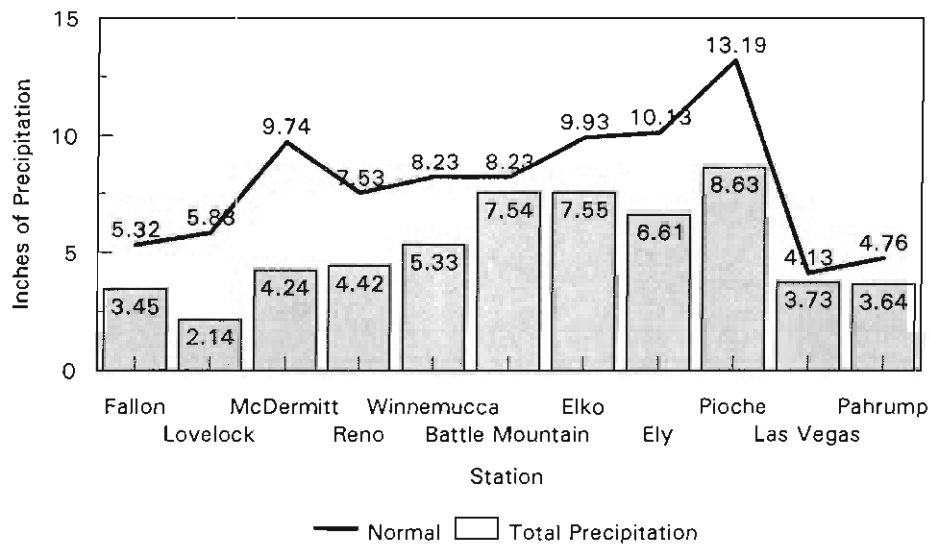
² Days between last frost in spring to first frost in fall, 32 degrees F.

Frost Free Days 1998-1999



Days between temperatures of 32 degrees Fahrenheit.

Precipitation, 1999 Departures from Normal, Total Precipitation



ANNUAL CROP SUMMARY - NEVADA, 1997-1999

Crop	Year	Acreage		Production			Season Average Price Per Unit	Value Of Prod.
		Planted	Harvested	Unit	Yield Per Acre	Total		
Winter Wheat	1997	15	14	BU	100.0	1,400	3.25	4,550
	1998	7	6		100.0	600	2.25	1,350
	1999	11	10		95.0	950	2.60	2,470
Spring Wheat	1997	6	5		95.0	475	3.25	1,544
	1998	9	8		80.0	640	2.35	1,504
	1999	6	5		85.0	425	2.75	1,169
All Wheat	1997	21	19		98.7	1,875	3.25	6,094
	1998	16	14		88.6	1,240	2.30	2,854
	1999	17	15		91.7	1,375	2.65	3,639
Barley	1997	5	5		100.0	500	2.85	1,425
	1998	5	4		100.0	400	2.45	980
	1999	5	4		90.0	360	2.35	846
Alfalfa Hay	1997	--	260	TONS	4.20	1,092	107.00	116,844
	1998	--	260		4.60	1,196	103.00	123,188
	1999	--	255		4.10	1,046	83.50	87,341
All Other Hay	1997	--	230		1.80	414	89.00	36,846
	1998	--	225		1.60	360	92.00	33,120
	1999	--	225		1.80	405	78.00	31,590
All Hay	1997	--	490		3.07	1,506	105.00	153,690
	1998	--	485		3.21	1,556	102.00	156,308
	1999	--	480		3.02	1,451	83.00	118,931
Alfalfa Seed	1997	--	12.0	LBS	650	7,800	1.30	10,140
	1998	--	13.5		620	8,370	1.37	11,467
	1999	--	13.0		690	8,970	1.35	12,109
Potatoes	1997	7.0	6.9	CWT	430	2,967	4.50	13,352
	1998	7.0	6.9		400	2,800	4.25	11,900
	1999	6.5	6.5		440	2,860	4.90	14,014
		<i>-Actual Acres-</i>		<i>-Actual Tons-</i>				
Garlic	1997	2,100	2,100	TONS	7.5	15,750	330.00	5,198
	1998	2,300	2,300		7.2	16,560	310.00	5,134
	1999	2,600	2,600		6.5	16,900	300.00	5,070
Onions	1997	1,800	1,700		27.0	45,900	290.00	13,311
	1998	2,100	2,100		22.0	46,200	280.00	12,936
	1999	3,200	2,800		28.0	78,400	170.00	13,328

RECORD HIGHS AND LOWS IN NEVADA AGRICULTURE

Item	Unit	Record High		Record Low		Year Estimate Series Began
		Quantity	Year	Quantity	Year	
All Wheat:						
Harvested	Acres	31,000	1976, 1981	3,000	1879	1881
Yield	Bushels	98.7	1997	19	1879	1879
Production	Bushels	1,890,000	1982	68,000	1879	1881
Winter Wheat:						
Harvested	Acres	19,000	1974	1,000	1932	1909
Yield	Bushels	100	1993, 1995, 1996 1997, 1998	20	1952	1909
Production	Bushels	1,400,000	1997	23,000	1932	1909
Spring Wheat:						
Harvested	Acres	19,000	1919	3,000	1968	1909
Yield	Bushels	95	1997	20	1936	1909
Production	Bushels	1,200,000	1984	81,000	1968	1909
Barley:						
Harvested	Acres	32,000	1982	*4,000	1994, 1995, 1998, 1999	1870
Yield	Bushels	110	1982	25.5	1923	1870
Production	Bushels	2,560,000	1982	152,000	1923	1870
All Hay:						
Harvested	Acres	530,000	1983	206,000	1931	1909
Yield	Ton	3.21	1998	1.33	1943	1909
Production	Ton	1,556,000	1998	302,000	1931	1909
Alfalfa Hay:						
Harvested	Acres	260,000	1998	98,000	1947	1909
Yield	Ton	4.60	1998	1.80	1931	1909
Production	Ton	1,196,000	1998	234,000	1931	1909
All Other Hay:						
Harvested	Acres	310,000	1970	150,000	1992	1969
Yield	Ton	1.80	1997, 1999	1.05	1975	1969
Production	Ton	428,000	1982	188,000	1992	1969
Alfalfa Seed:						
Harvested	Acres	23,500	1970	1,000	1960	1959
Yield	Pounds	900	1990	200	1962	1959
Production	Pounds	14,400,000	1990	300,000	1960	1959
Potatoes:						
Harvested	Acres	17,000	1978	500	1968	1879
Yield	Cwt.	430	1997	60	1931	1879
Production	Cwt.	5,440,000	1978	88,000	1889	1879
All Cattle:						
Jan. 1	Head	700,000	1982	36,000	1867	1867
All Sheep:						
Jan. 1	Head	1,330,000	1920	24,000	1867	1867
All Hogs:						
Jan. 1	Head	34,000	1916	3,000	1867, 1868	1867

* Record matched or new record set in 1999.

WINTER WHEAT: Acreage, Yield, Production, Price and Value, Nevada, 1990-99

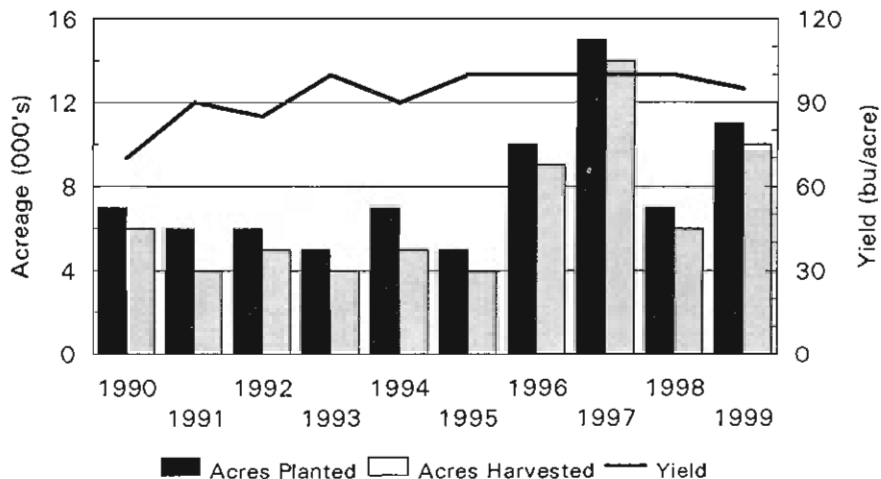
Year	Acres Planted	Acres Harvested	Yield Per Acre	Production	Season Price Ave.	Value of Production
	<i>Acres</i>		Bushels	000 Bu.	\$'s Per Bu.	000 \$'s
1990	7,000	6,000	70	420	2.48	1,042
1991	6,000	4,000	90	360	3.25	1,170
1992	6,000	5,000	85	425	3.20	1,360
1993	5,000	4,000	100	400	3.00	1,200
1994	7,000	5,000	90	450	3.60	1,620
1995	5,000	4,000	100	400	4.45	1,780
1996	10,000	9,000	100	900	4.15	3,735
1997	15,000	14,000	100	1,400	3.25	4,550
1998	7,000	6,000	100	600	2.25	1,350
1999	11,000	10,000	95	950	2.60	2,470

WINTER WHEAT: Acreage, Yield and Production, By County, Nevada, 1998-99

County	1998				1999			
	Planted	Harvested	Yield	Production	Planted	Harvested	Yield	Production
	---- Acres ----		---- Bushels ----		---- Acres ----		---- Bushels ----	
Humboldt	900	800	95	76,000	4,200	4,000	93	370,000
Pershing	4,100	4,000	106	424,000	4,100	3,900	97	380,000
Other Counties	1,400	900	88	79,000	2,100	1,600	97	155,000
Northwest	6,400	5,700	102	579,000	10,400	9,500	95	905,000
Other Districts ¹	600	300	70	21,000	600	500	90	45,000
State	7,000	6,000	100	600,000	11,000	10,000	95	950,000

¹ Data included in "Other Districts" to avoid disclosing individual information.

Winter Wheat



SPRING WHEAT: Acreage, Yield, Production, Price and Value, Nevada, 1990-99

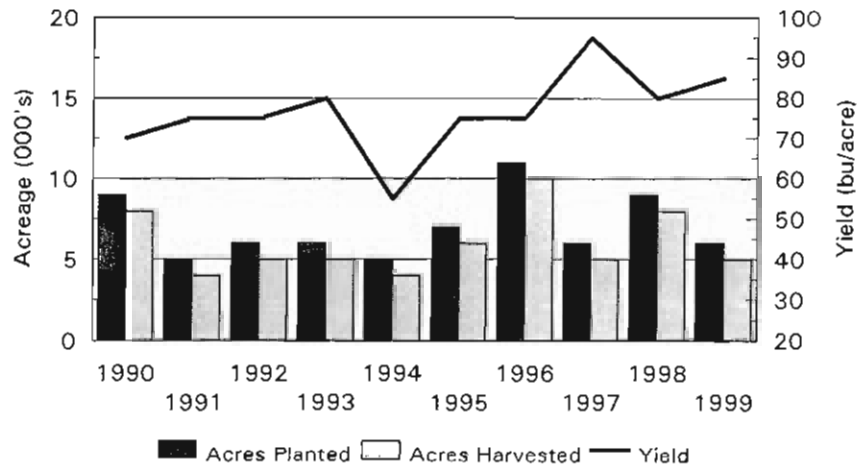
Year	Acres Planted	Acres Harvested	Yield Per Acre	Production	Season Price Ave.	Value of Production
	<i>Acres</i>		<i>Bushels</i>	<i>000 Bu.</i>	<i>\$'s Per Bu.</i>	<i>000 \$'s</i>
1990	9,000	8,000	70	560	2.40	1,344
1991	5,000	4,000	75	300	3.30	990
1992	6,000	5,000	75	375	3.35	1,256
1993	6,000	5,000	80	400	2.95	1,180
1994	5,000	4,000	55	220	3.40	748
1995	7,000	6,000	75	450	4.40	1,980
1996	11,000	10,000	75	750	4.05	3,038
1997	6,000	5,000	95	475	3.25	1,544
1998	9,000	8,000	80	640	2.35	1,504
1999	6,000	5,000	85	425	2.75	1,169

SPRING WHEAT: Acreage, Yield and Production, By County, Nevada, 1998-99

County	1998				1999			
	Planted	Harvested	Yield	Production	Planted	Harvested	Yield	Production
	<i>Acres</i>		<i>Bushels</i>		<i>Acres</i>		<i>Bushels</i>	
Humboldt	5,100	5,000	76	380,000	3,500	3,300	82	270,000
Pershing	1,800	1,600	98	157,000	1,200	1,000	90	90,000
Other Counties	1,900	1,400	74	103,000	1,000	600	93	56,000
Northwest	8,800	8,000	80	640,000	5,700	4,900	85	416,000
Other Districts ¹	200	0	0	0	300	100	90	9,000
State	9,000	8,000	80	640,000	6,000	5,000	85	425,000

¹ Data included in "Other Districts" to avoid disclosing individual information.

Spring Wheat



BARLEY: Acreage, Yield, Production, Price and Value, Nevada, 1990-99

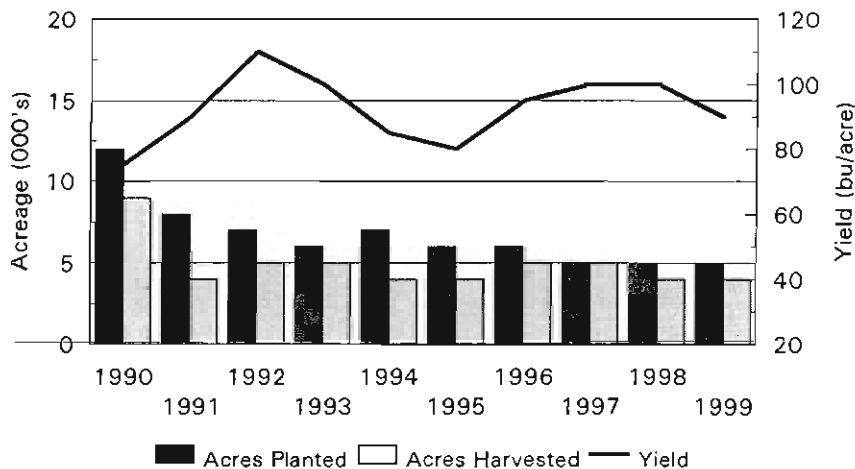
Year	Acres Planted	Acres Harvested	Yield Per Acre	Production	Season Price Ave.	Value of Production
	Acres		Bushels	000 Bu.	\$'s Per Bu.	000 \$'s
1990	12,000	9,000	75	675	2.20	1,485
1991	8,000	4,000	90	360	2.15	774
1992	7,000	5,000	110	550	2.25	1,238
1993	6,000	5,000	100	500	2.55	1,275
1994	7,000	4,000	85	340	2.45	833
1995	6,000	4,000	80	320	3.15	1,008
1996	6,000	5,000	95	475	3.00	1,425
1997	5,000	5,000	100	500	2.85	1,425
1998	5,000	4,000	100	400	2.45	980
1999	5,000	4,000	90	360	2.35	846

BARLEY: Acreage, Yield and Production, By County, Nevada, 1998-99

County	1998				1999			
	Planted	Harvested	Yield	Production	Planted	Harvested	Yield	Production
	----- Acres -----		----- Bushels -----		----- Acres -----		----- Bushels -----	
Humboldt	700	700	100	70,000	600	600	92	55,000
Pershing	500	400	100	40,000	600	500	96	48,000
Other Counties	1,200	1,000	100	100,000	1,100	900	89	80,000
Northwest	2,400	2,100	100	210,000	2,300	2,000	92	183,000
Other Districts ¹	2,600	1,900	100	190,000	2,700	2,000	90	177,000
State	5,000	4,000	100	400,000	5,000	4,000	90	360,000

¹ Data included in "Other Districts" to avoid disclosing individual information.

Barley

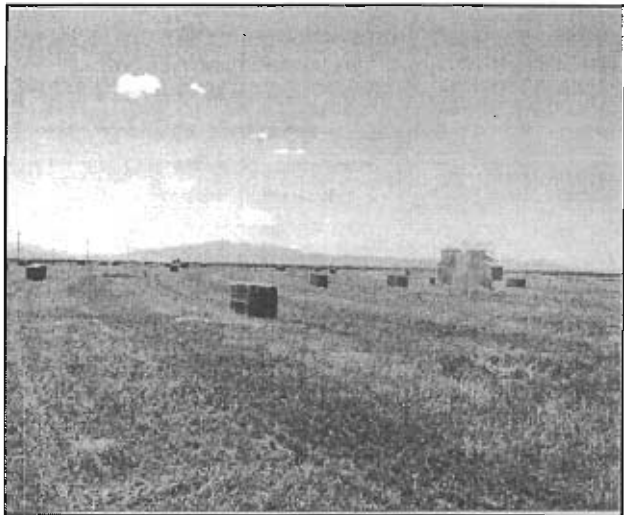


HAY: Acreage, Yield, Production, Price and Value, Nevada, 1990-99

All Hay					
Year	Acres Harvested	Yield Per Acre	Production	Season Average Price ¹⁾	Value of Production
	<i>000</i>	<i>Tons</i>	<i>000 Tons</i>	<i>\$</i>	<i>000\$'s</i>
1990	490	2.77	1,359	99.00	133,508
1991	475	2.44	1,158	77.50	89,169
1992	380	2.79	1,062	78.00	81,830
1993	505	2.74	1,385	94.00	129,910
1994	470	2.98	1,400	95.50	131,236
1995	480	3.16	1,516	96.00	141,735
1996	480	3.16	1,516	99.50	146,421
1997	490	3.07	1,506	105.00	153,690
1998	485	3.21	1,556	102.00	158,712
1999	480	3.02	1,451	83.00	120,433

¹⁾ Estimated marketings of alfalfa and other hay used as weights to calculate all hay price.

Hay is the foremost crop produced in Nevada. The Nevada climate and irrigable soils are conducive to the production of high quality alfalfa and specialty hays. "Other Hay" listed in this publication includes wild and improved grasses, timothy, sudan, and grains. Much of the Nevada grown alfalfa hay is marketed to California dairymen and significant quantities are shipped overseas. Much of the grass hay produced is used to meet the winter feeding demands of resident livestock herds. Timothy hay is marketed primarily to race horse accounts across the western United States.

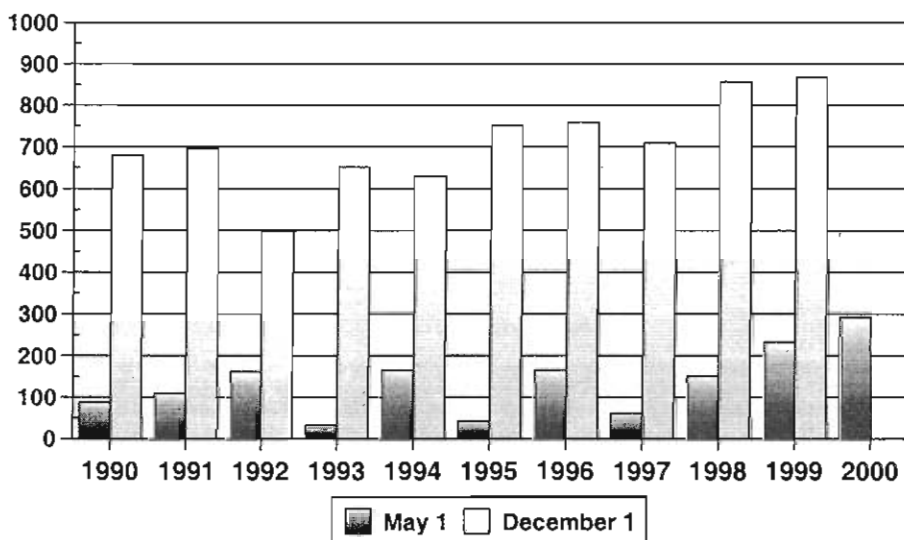


Alfalfa Hay					
Year	Acres Harvested	Yield Per Acre	Production	Season Average Price	Value of Production
	<i>000</i>	<i>Tons</i>	<i>000 Tons</i>	<i>\$</i>	<i>000\$'s</i>
1990	240	4.10	984	105.00	103,320
1991	235	3.65	858	80.50	69,069
1992	230	3.80	874	79.00	69,046
1993	235	4.40	1,034	99.50	102,883
1994	240	4.30	1,032	96.50	99,588
1995	250	4.50	1,125	97.00	104,760
1996	250	4.50	1,125	102.00	114,750
1997	260	4.20	1,092	107.00	116,844
1998	260	4.60	1,196	103.00	123,188
1999	255	4.10	1,046	83.50	87,341

HAY: Acreage, Yield, Production, Price and Value, Nevada 1990-99 (cont.)

All Other Hay					
Year	Acres Harvested	Yield Per Acre	Production	Season Average Price	Value of Production
	000	Tons	000 Tons	\$	000\$'s
1990	250	1.50	375	80.50	30,188
1991	240	1.25	300	67.00	20,100
1992	150	1.25	188	68.00	12,784
1993	270	1.30	351	77.00	27,027
1994	230	1.60	368	86.00	31,648
1995	230	1.70	391	87.00	36,975
1996	230	1.70	391	81.00	31,671
1997	230	1.80	414	89.00	36,846
1998	225	1.60	360	92.00	33,120
1999	225	1.80	405	78.00	31,590

Hay Stocks on Farms
Nevada, 1990-2000



HAY: Stocks on Farms, Nevada, May 1 and December 1, 1990-00

Year	1990	1991	1992	1993	1994	1995	1996	1997	1998	1999	2000
	----- 1,000 Tons -----										
May 1	88	109	162	32	166	42	166	61	151	233	290
Dec 1	680	695	499	651	630	750	758	708	857	867	na

HAY: Acreage Harvested, Yield and Production, by Type and County, Nevada, 1998 -1999

1999	Alfalfa Hay			All Other Hay			All Hay	
	County	Acres	Yield	Production	Acres	Yield	Production	Production
			Tons	Tons		Tons	Tons	Tons
Carson City	400	1.8	700	300	1.0	300	1,000	
Churchill	30,000	3.9	118,000	6,000	2.0	12,000	130,000	
Douglas	5,000	2.8	14,000	7,600	2.6	20,000	34,000	
Humboldt	52,000	3.9	204,000	32,000	1.9	62,000	266,000	
Lyon	44,000	4.6	201,000	5,000	3.4	17,000	218,000	
Pershing	18,000	4.8	87,000	4,000	3.4	13,500	100,500	
Storey	100	3.0	300	100	2.0	200	500	
Washoe	11,500	4.0	46,000	5,000	1.8	9,000	55,000	
Northwest	161,000	4.2	671,000	60,000	2.2	134,000	805,000	
Elko	21,000	3.4	71,000	131,000	1.5	203,000	274,000	
Eureka	17,000	5.0	85,000	9,000	2.4	22,000	107,000	
Lander	13,000	3.8	50,000	11,000	2.1	23,000	73,000	
White Pine	14,000	3.2	45,000	5,000	1.6	8,000	53,000	
Northeast	65,000	3.9	251,000	156,000	1.6	256,000	507,000	
Clark	2,000	4.0	8,000	1,000	1.5	1,500	9,500	
Esmeralda	7,000	4.6	32,000	500	2.4	1,200	33,200	
Lincoln	9,000	4.8	43,000	3,000	1.4	4,300	47,300	
Mineral	4,000	3.0	12,000	500	2.0	1,000	13,000	
Nye	7,000	4.1	29,000	4,000	1.8	7,000	36,000	
South	29,000	4.3	124,000	9,000	1.7	15,000	139,000	
State	255,000	4.1	1,046,000	225,000	1.8	405,000	1,451,000	

1998	Alfalfa Hay			All Other Hay			All Hay	
	County	Acres	Yield	Production	Acres	Yield	Production	Production
			Tons	Tons		Tons	Tons	Tons
Carson City	200	4.0	800	200	1.0	200	1,000	
Churchill	30,000	4.9	146,000	6,000	1.7	10,100	156,100	
Douglas	5,000	4.2	21,000	7,700	2.6	20,000	41,000	
Humboldt	53,000	4.9	260,000	30,000	1.9	58,000	318,000	
Lyon	43,000	4.7	201,600	5,000	2.4	12,000	213,600	
Pershing	22,000	4.4	96,000	4,000	1.4	5,500	101,500	
Storey	100	4.0	400	100	2.0	200	600	
Washoe	12,700	4.4	56,200	5,000	2.4	12,000	68,200	
Northwest	166,000	4.7	782,000	58,000	2.0	118,000	900,000	
Elko	22,000	4.8	106,000	133,000	1.4	180,000	286,000	
Eureka	17,000	4.1	70,000	8,000	1.8	14,000	84,000	
Lander	13,000	4.8	62,000	12,000	2.1	25,000	87,000	
White Pine	14,000	3.7	52,000	4,000	2.0	8,000	60,000	
Northeast	66,000	4.4	290,000	157,000	1.4	227,000	517,000	
Clark	2,000	6.0	12,000	1,000	1.5	1,500	13,500	
Esmeralda	7,500	4.5	34,000	500	2.4	1,200	35,200	
Lincoln	8,500	6.0	51,000	3,000	1.4	4,300	55,300	
Mineral	4,000	3.0	12,000	500	2.0	1,000	13,000	
Nye	6,000	2.5	15,000	5,000	1.4	7,000	22,000	
South	28,000	4.4	124,000	10,000	1.5	15,000	139,000	
State	260,000	4.6	1,196,000	225,000	1.6	360,000	1,556,000	

NEVADA ALFALFA HAY BALES: Trucked into California, 1994-1999

Month	1994	1995	1996	1997	1998	1999
TONS						
January	32,907	25,902	30,594	39,209	21,505	23,908
February	25,775	25,366	28,353	35,144	22,092	24,177
March	25,715	27,529	31,138	25,519	37,918	31,159
April	10,758	19,510	52,081	12,456	28,812	25,585
May	5,075	9,668	12,583	6,166	19,629	17,372
June	12,610	12,228	17,150	16,401	21,940	19,143
July	19,338	17,879	28,300	28,087	33,182	31,164
August	24,783	24,032	34,306	8,040	28,299	24,563
September	25,641	22,598	29,619	27,005	25,369	25,120
October	30,884	26,983	38,376	65,244	27,393	24,557
November	27,757	34,403	40,525	36,141	26,826	25,504
December	30,578	30,587	36,676	38,047	18,392	30,003
Total	271,821	276,685	379,701	337,459	311,357	302,255

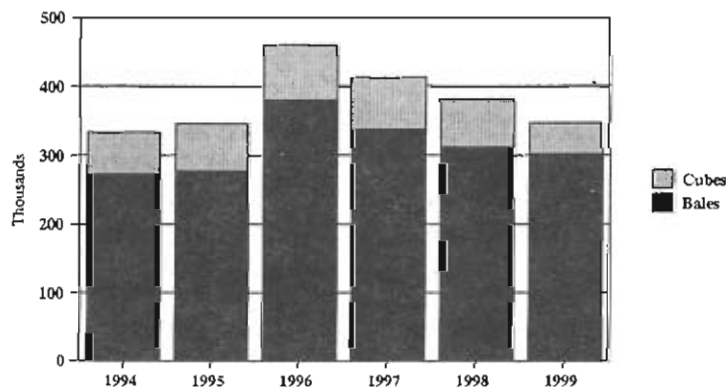
NEVADA ALFALFA HAY CUBES: Trucked into California 1994-1999

Month	1994	1995	1996	1997	1998	1999
TONS						
January	878	4,719	4,722	6,811	3,415	2,813
February	476	4,487	5,051	5,193	4,727	4,008
March	602	5,685	5,166	5,636	5,980	4,047
April	5,527 ¹	5,131	9,669	3,988	4,904	4,955
May	5,250	4,810	6,604	4,113	6,463	2,882
June	5,909	4,620	5,947	3,183	5,655	3,886
July	7,268	6,840	7,663	9,771	3,686	701
August	7,643	8,135	7,687	3,923	4,878	3,945
September	7,703	5,676	4,227	6,214	4,296	3,372
October	7,100	6,350	9,033	14,148	4,169	4,414
November	6,763	7,137	7,099	5,960	4,129	5,366
December	5,906	4,817	6,752	6,731	18,391	4,231
Total	61,025	68,407	79,620	75,671	70,693	44,620

¹ Larger volume due to increased shipments for export.

SOURCE: California Market Summary, USDA-Agricultural Marketing Service, Livestock and Grain Market News; 1428 S. Pioneer Way, Moses Lake, WA, 98837; compiled from border station reports.

**Alfalfa Hay Trucked into California from Nevada
Bales and Cubes, Tons, 1994-1999**



ALFALFA SEED: Acreage, Yield, Production, Price and Value, Nevada, 1990-99

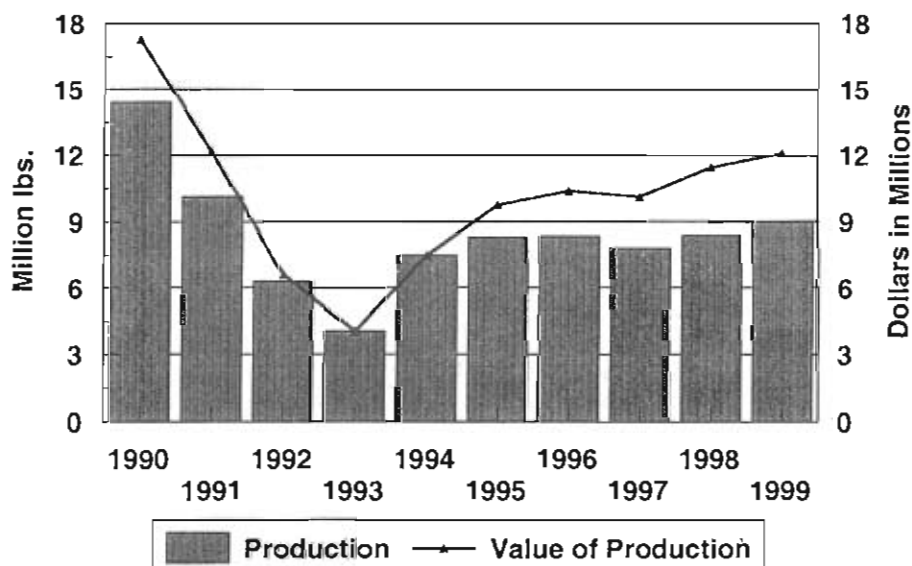
Year	Acres		Production		Value	
	Harvested	Yield Per Acre	Total	Season Average Price	Value of Production	
	Actual Acres	Lbs.	000 Lbs.	\$ Per Lb.	000\$'s	
1990	16,000	900	14,400	1.20	17,280	
1991	14,000	725	10,150	1.20	12,180	
1992	10,000	570	6,270	1.05	6,584	
1993	9,500	425	4,038	1.00	4,038	
1994	11,000	680	7,480	1.00	7,480	
1995	12,000	690	8,280	1.18	9,770	
1996	13,000	640	8,320	1.25	10,400	
1997	12,000	650	7,800	1.30	10,140	
1998	13,500	620	8,370	1.37	11,467	
1999	13,000	690	8,970	1.35	12,109	

ALFALFA SEED: Acreage, Yield, Production, by County, Nevada, 1998-99

County	1998			1999		
	Harvested	Yield Per Acre	Production of Clean Seed	Harvested	Yield Per Acre	Production of Clean Seed
	Acres	Lbs.	000 Lbs.	Acres	Lbs.	000 Lbs.
Humboldt	8,800	625	5,500	8,200	650	5,330
Pershing	4,100	600	2,460	4,200	780	3,276
All Other ¹⁾	600	680	410	600	610	364
State	13,500	620	8,370	13,000	690	8,970

¹⁾ All other counties combined

**Alfalfa Seed
Production and Value, 1990-99**



ONIONS: Acreage, Yield, Production, Price and Value, Nevada, 1990-99

Year	Acres Planted	Acres Harvested	Yield Per Acre	Production	Season Average Price	Value of Production
			<i>Tons</i>	<i>Tons</i>	<i>\$ Per Ton</i>	<i>000\$'s</i>
1990	--	700	22	15,400	260.00	4,004
1991	--	700	30	21,000	280.00	5,880
1992	-	650	28	18,200	270.00	4,914
1993	1,000	1,000	28	28,000	540.00	15,120
1994	1,500	1,500	21	31,500	280.00	8,820
1995	1,900	1,900	23	43,700	260.00	11,362
1996	1,900	1,900	29	55,100	290.00	15,979
1997	1,800	1,700	27	45,900	290.00	13,311
1998	2,100	2,100	22	46,200	280.00	12,938
1999	3,200	2,800	28	78,400	170.00	13,328



Garlic and onion production have increased steadily in Nevada during recent years. Onions are produced for both fresh market use and dehydration. Nevada grown garlic is used primarily for seed, although some is also dehydrated. Most of the acreage planted to these crops is located in Lyon, Washoe, and Humboldt counties. Photo courtesy of Empire Farms.

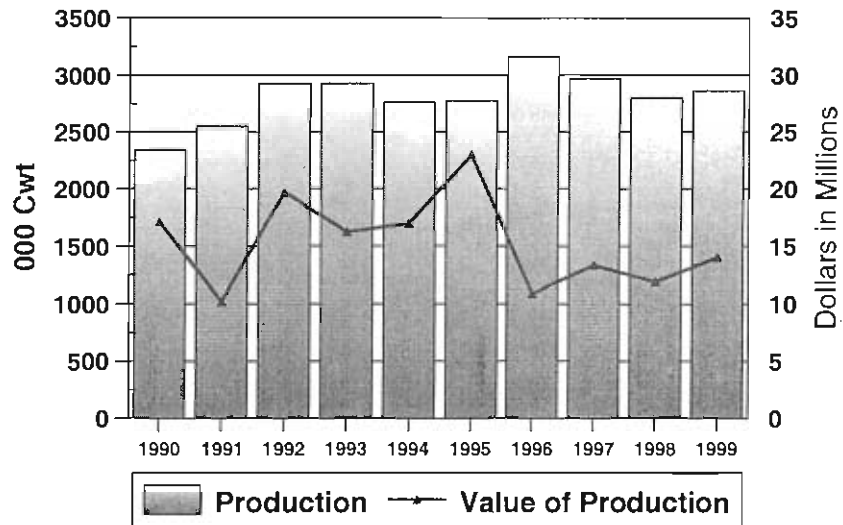
GARLIC: Acreage, Yield, Production, Price and Value, Nevada, 1990-99

Year	Acres Planted	Acres Harvested	Yield Per Acre	Production	Season Average Price	Value of Production
			<i>Tons</i>	<i>Tons.</i>	<i>\$ Per Ton</i>	<i>000\$'s</i>
1990	--	1,050	7.5	7,900	320.00	2,520
1991	--	550	4.0	2,200	375.00	825
1992	--	950	8.0	7,600	335.00	2,546
1993	800	800	8.0	6,400	310.00	1,984
1994	1,650	1,650	7.5	12,375	295.00	3,651
1995	1,650	1,650	7.7	12,705	350.00	4,447
1996	1,800	1,800	7.9	14,220	370.00	5,261
1997	2,100	2,100	7.5	15,750	330.00	5,198
1998	2,300	2,300	7.2	16,560	310.00	5,134
1999	2,600	2,600	6.5	16,900	300.00	5,070

POTATOES: Acreage, Yield, Production, Price and Value, Nevada, 1990-99

Year	Acres Planted	Acres Harvested	Yield Per Acre	Production	Season Average Price	Value of Production
	Actual Acres		Cwt.	000 Cwt.	\$ Per Cwt.	000\$'s
1990	7,000	7,000	335	2,345	7.30	17,119
1991	7,600	7,600	335	2,546	4.00	10,184
1992	7,500	7,500	390	2,925	6.05	17,696
1993	7,700	7,700	380	2,926	5.55	16,239
1994	8,000	8,000	345	2,760	6.15	16,974
1995	7,600	7,600	365	2,774	8.30	23,024
1996	8,000	7,900	400	3,160	3.45	10,902
1997	7,000	6,900	430	2,967	4.50	13,352
1998	7,000	7,000	400	2,800	4.25	11,900
1999	6,500	6,500	440	2,860	4.90	14,014

**Potatoes
Production and Value, 1990-99**



ALL MINT: Acreage, Production, Price, and Value, Nevada, 1997-99¹

Year	Acres Planted	Acres Harvested	Yield per Acre	Production	Season Average Price	Value of Production
	Actual Acres		--- Pounds ---		\$ per Pound	000 \$'s
1997	1,400	1,400	92	128,800	8	1,030
1998	1,600	1,600	107	171,200	10	1,712
1999	1,500	1,400	73	102,200	11	1,124

¹ 1997 is the first year of publication for this commodity. Value of mint oil production was previously included in cash receipts for "all other crops" estimates.

Livestock in Nevada

Over 80% of the land area in Nevada is federally controlled public land. Much of this area is arid rangeland with limited potential for use. The grazing of range livestock has historically been and continues to be the most efficient means of harvesting rangeland grasses, a renewable resource. Cattle are the most common agricultural enterprise in Nevada and can be found on over half of the farms and ranches in the State. Sheep numbers have trended downward for several decades, but they remain a viable alternative on many ranges.

CATTLE AND CALVES: Inventory, January 1, 1999-2000 ^{/1}

Class of Livestock	Nevada			United States		
	1999	2000	'00 as % of '99	1999	2000	'00 as % of '99
	--- 000 Head ---		Pct.	--- 000 Head ---		Pct.
All Cattle and Calves	510	510	100	99,115	98,048	99
All Cows that have calved	260	260	100	42,878	42,734	100
Beef Cows	235	235	100	33,745	33,546	99
Milk Cows	25	25	100	9,133	9,188	101
Heifers 500 Lbs. +	86	91	106	19,774	19,528	99
Beef Replacement	43	47	109	5,535	5,530	100
Milk Replacement	8	9	113	4,069	3,954	97
Other Heifers	35	35	100	10,170	10,045	99
Steers 500 Lbs. +	57	55	96	16,891	16,652	99
Bulls 500 Lbs. +	15	16	107	2,281	2,294	101
Calves Under 500 Lbs.	92	88	96	17,290	16,840	99
Inventory Value (000\$)	295,800	336,600	114	58,833,65	67,011,240	114
Value Per Head (\$'s)	580	660	114	594	683	115

^{/1} Sum of classes may not add to total due to rounding.

CATTLE AND CALVES: Inventory, Supply and Disposition, Nevada, 1990-2000

Year	Cattle Jan. 1	All Calves Born	Inship-ments	Marketings		Farm Slaughter	Deaths	
				Cattle	Calves		Cattle	Calves
----- 000 Head -----								
1990	530	245	40	115	114	3	8	15
1991	520	250	30	145	112	2	6	15
1992	520	240	25	152	113	2	6	12
1993	500	225	35	150	100	2	6	12
1994	490	220	47	137	100	2	6	12
1995	500	220	39	139	100	2	6	12
1996	500	220	47	128	99	2	6	12
1997	520	220	38	146	101	2	6	13
1998	510	220	50	148	101	2	6	13
1999	510	220	55	153	101	2	6	13
2000	510	"	"	"	"	"	"	"

^{/1} Data has not been released.

CATTLE AND CALVES: Production and Income, Nevada, 1990-99

Year	Production	Marketings	Value of Production	Cash Receipts ¹	Value Home Consumption	Gross Income
	----- 000 Lbs -----		----- 000\$'s -----			
1990	159,625	181,960	118,296	135,205	3,117	138,322
1991	180,245	187,680	135,857	142,754	1,778	144,532
1992	168,650	196,200	122,899	142,243	1,707	143,950
1993	164,275	189,000	121,565	141,431	1,771	143,202
1994	152,915	176,000	113,009	130,640	1,748	132,388
1995	151,255	178,000	86,748	102,436	1,360	103,796
1996	154,715	166,600	74,089	81,017	1,150	82,167
1997	152,860	185,400	92,246	112,287	1,434	113,721
1998	153,700	187,000	94,333	114,870	1,762	116,632
1999	159,500	192,000	111,308	134,456	2,010	136,466

¹ Receipts from marketings and sale of farm slaughter.

CATTLE AND CALVES: Inventory, January 1, by County, Nevada, 1995-2000

County & District	1995	1996	1997	1998	1999	2000
	----- Number of Head -----					
Carson City	1,600	1,500	1,600	1,200	700	700
Churchill	43,000	42,000	41,000	41,000	40,000	39,000
Douglas	20,000	21,000	20,000	19,000	19,000	19,000
Humboldt	57,000	55,000	56,000	63,000	66,000	67,000
Lyon	43,000	43,000	44,000	44,000	40,000	40,000
Pershing	27,000	26,000	27,000	29,000	29,000	28,000
Storey	400	500	400	300	300	300
Washoe	32,000	33,000	35,000	24,500	24,000	24,000
Northwest	224,000	222,000	225,000	222,000	219,000	218,000
Elko	157,000	155,000	166,000	159,000	164,000	165,000
Eureka	13,000	14,000	15,000	23,000	24,000	24,000
Lander	29,000	28,000	30,000	21,000	20,000	19,000
White Pine	25,000	25,000	26,000	26,000	25,000	25,000
Northeast	224,000	222,000	237,000	229,000	233,000	233,000
Clark	13,000	13,000	14,000	11,000	10,000	10,000
Esmeralda	8,000	7,000	7,000	6,000	6,000	7,000
Lincoln	16,000	16,000	16,000	15,000	15,000	15,000
Mineral	3,000	4,000	4,000	5,000	5,000	4,000
Nye	12,000	16,000	17,000	22,000	22,000	23,000
South	52,000	56,000	58,000	59,000	58,000	59,000
State	500,000	500,000	520,000	510,000	510,000	510,000

CATTLE AND CALVES: Number on Feed, January 1, Nevada, 1994-99¹

Item	1994	1995	1996	1997	1998	1999	1999 as % of 1998
	----- Thousand Head -----						- Percent -
Number on Feed for Slaughter Market	25	25	25	25	24	16	67

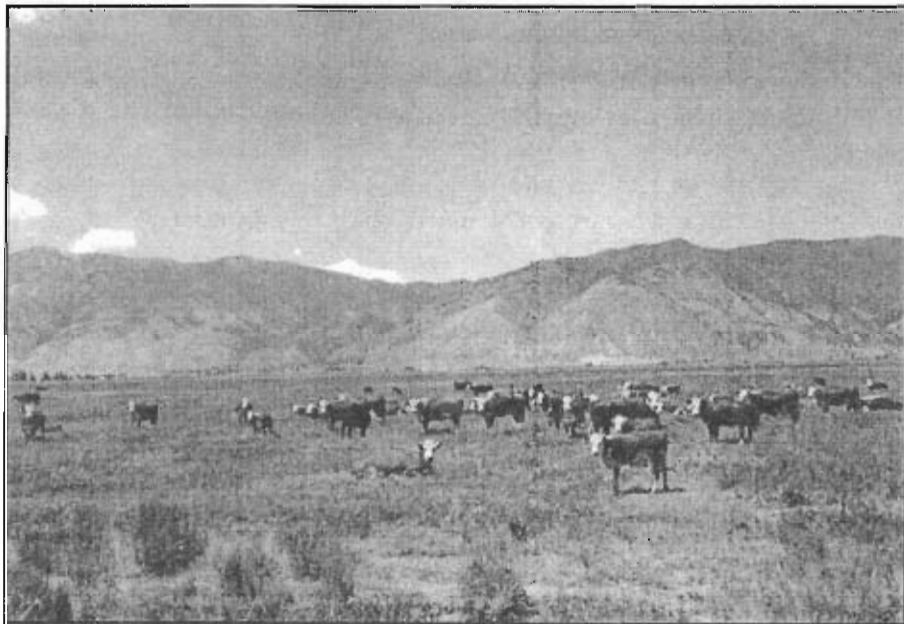
¹ Estimate no longer published as of January 2000.

COMMERCIAL CATTLE SLAUGHTER: Nevada, 1990-99

Year	Head ¹	Live weight	
		Average	Total
	#	Lbs.	000 Lbs.
1990	1,300	937	1,257
1991	1,500	1,096	1,675
1992	1,400	1,069	1,461
1993	1,300	1,092	1,425
1994	1,200	1,128	1,354
1995	1,200	1,082	1,292
1996	1,500	1,038	1,004
1997	1,300	1,040	1,316
1998	1,000	1,057	1,028
1999	1,000	1,034	1,034

Livestock slaughter is very limited in Nevada. During 1999, there were just three slaughter plants operating in the State. Statistics on sheep and hog slaughter are not printed at the request of the operations to avoid disclosure of individual firm information.

¹Rounded to the nearest 100.



SHEEP AND LAMBS: Inventory, January 1, 1999-2000 ¹

Class of Livestock	Nevada			United States		
	1999	2000	00 as % of 99	1999	2000	00 as % of 99
	--- 000 Head ---		Pct.	--- 000 Head ---		Pct.
All Sheep and Lambs	85	90	106	7,215	7,026	97
All Market Sheep & Lambs	10	12	120	1,916	1,863	97
Market Sheep	1	1	100	82.5	80.0	97
Market Lambs	9	11	122	1,834	1,783	97
All Breeding Sheep & Lambs	75	78	104	5,299	5,163	97
Breeding Ewes 1 year & older	53	58	109	4,322	4,228	98
Breeding Rams 1 year & older	2	2	100	203	206	101
Breeding Replacement Lambs	20	18	90	774	730	94
Inventory Value (000\$)	8,245	9,900	120	637,794	668,130	105
Value Per Head (\$'s)	97	110	113	88	95	108

¹ Sum of classes may not add to total due to rounding.

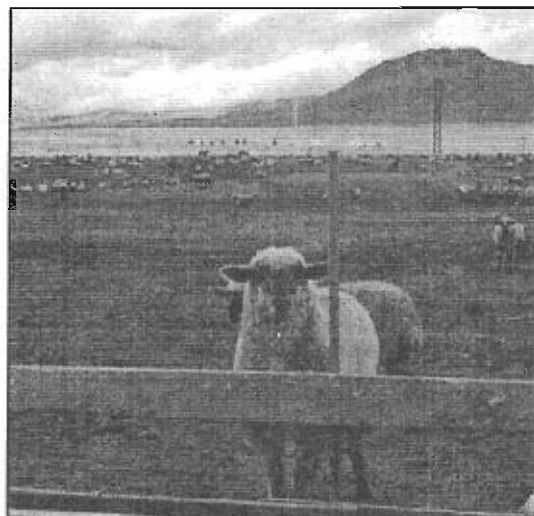
SHEEP AND LAMBS: Inventory, Supply and Disposition, Nevada, 1990-2000

Year	Sheep & Lambs Jan. 1 ¹	Lamb Crop	Inshipments	Marketings		Farm Slaughter	Deaths	
				Sheep	Lambs		Sheep	Lambs
----- 000 Head -----								
1990	101	80	13	7.0	61.0	3.0	9	15
1991	98	65	12	24.0	39.0	3.0	9	15
1992	85	62	29	7.0	56.0	2.0	7	13
1993	91	63	24	3.5	61.0	1.5	8	14
1994	91	62	24	10.0	41.5	1.5	8	13
1995	103	60	24	9.5	62.0	1.5	8	13
1996	93	58	24	13.5	49.0	1.5	7	13
1997	91	56	22	17.0	44.0	1.0	7	12
1998	88	57	21	16.0	45.0	1.0	7	12
1999	85	58	32	11.0	53.0	1.0	7	13
2000	90	¹²	¹²	¹²	¹²	¹²	¹²	¹²

¹ Includes new crop lambs

beginning in 1996.

¹² Data has not been released.



SHEEP AND LAMBS: Production and Income, Nevada, 1990-99

Year	Production	Marketings	Value of Production	Cash Receipts /1	Value Home Consumption	Gross Income
	----- 000 Lbs. -----		----- 000 \$'s -----			
1990	6,985	6,645	2,561	2,815	114	2,929
1991	4,300	7,590	1,659	2,237	109	2,346
1992	3,958	6,283	2,027	3,027	69	3,096
1993	4,248	5,995	2,059	3,013	100	3,113
1994	4,293	5,345	1,785	2,229	97	2,326
1995	3,928	7,105	2,791	4,558	140	4,698
1996	4,148	6,615	2,655	4,257	155	4,412
1997	2,666	5,066	1,769	3,492	143	3,635
1998	2,600	4,860	1,583	2,861	117	2,978
1999	3,080	5,190	2,022	3,271	119	3,390

¹ Receipts from marketings and sale of farm slaughter.

SHEEP AND LAMBS: Inventory, January 1, by County, Nevada, 1995-2000

County & District	1995	1996	1997	1998	1999	2000
	----- Actual Numbers -----					
Carson City	2,000	2,000	2,000	500	500	500
Douglas	1,500	1,000	600	1,000	1,000	1,000
Humboldt	27,000	25,000	18,000	7,000	8,000	7,000
Lyon	11,000	11,000	9,000	12,000	12,000	12,000
Pershing	3,000	2,500	6,000	11,000	8,000	9,000
Washoe	6,000	5,000	6,000	8,000	7,000	11,000
Other Counties	500	500	400	500	500	500
Northwest	51,000	47,000	42,000	40,000	37,000	41,000
Elko	10,000	15,000	18,000	23,000	21,000	20,000
Eureka	3,000	3,000	3,000	11,000	12,500	12,500
Lander	24,000	8,000	6,000	4,000	5,000	5,000
White Pine	13,000	12,000	14,000	8,000	8,000	10,000
Northeast	50,000	38,000	41,000	46,000	46,500	47,500
Other Counties	2,000	2,000	2,000	2,000	1,500	1,500
South	2,000	2,000	2,000	2,000	1,500	1,500
State	103,000	87,000	85,000	88,000	85,000	90,000

WOOL PRODUCTION AND VALUE: Nevada, 1990-99

Year	Sheep Shorn	Weight Per Fleece	Wool Production	Price per Pound	Value
	000 Head	Lbs.	000 Lbs.	\$'s	000 \$'s
1990	86	9.7	831	.84	698
1991	90	9.5	854	.52	444
1992	73	9.5	697	.74	516
1993	70	8.9	620	.51	316
1994	74	9.8	722	.73	527
1995	74	9.2	680	1.08	734
1996	70	9.6	669	.69	462
1997	70	8.9	620	.90	558
1998	67	9.1	607	.58	352
1999	74	9.1	670	.33	221

HOGS AND PIGS: Inventory, December 1, 1998-99.¹

Class of Livestock	Nevada			United States		
	1998	1999	'99 as % of '98	1998	1999	'99 as % of '98
	--- 000 Head ---		Pct.	--- 000 Head ---		Pct.
All Hogs and Pigs	7.5	7.5	100	62,206	59,407	96
Breeding	1	1	100	6,682	6,244	93
Market	6.5	6.5	100	55,523	53,164	96
Inventory Value (000\$)	450	728	162	2,765,847	4,269,090	154
Value Per Head (\$'s)	60	97	162	44	72	164

¹ Sum of classes may not add to total due to rounding.

HOGS AND PIGS: Inventory, Supply and Disposition, Nevada, 1990-2000

Year	Hogs & Pigs Dec.1 ¹	Pig Crop	Inshipments	Farm Marketings	Farm Slaughter	Deaths
		Dec- Nov ¹				
----- Actual Number -----						
1990	14,000	27,000	2,500	27,000	500	2,000
1991	14,000	23,000	4,000	25,700	300	2,000
1992	13,000	18,600	3,000	22,800	300	1,500
1993	10,000	17,300	3,500	19,500	300	2,000
1994	9,000	18,600	5,200	21,500	300	2,000
1995	9,000	17,800	4,000	22,000	300	1,500
1996	7,000	15,000	4,000	18,200	300	1,000
1997	6,500	20,000	3,000	20,700	300	1,000
1998	7,500	10,000	3,000	12,200	300	500
1999	7,500	9,800	4,000	13,000	300	500
2000	7,500	¹²	¹²	¹²	¹²	¹²

¹ December 1st of preceding year. ¹² Data has not been released.

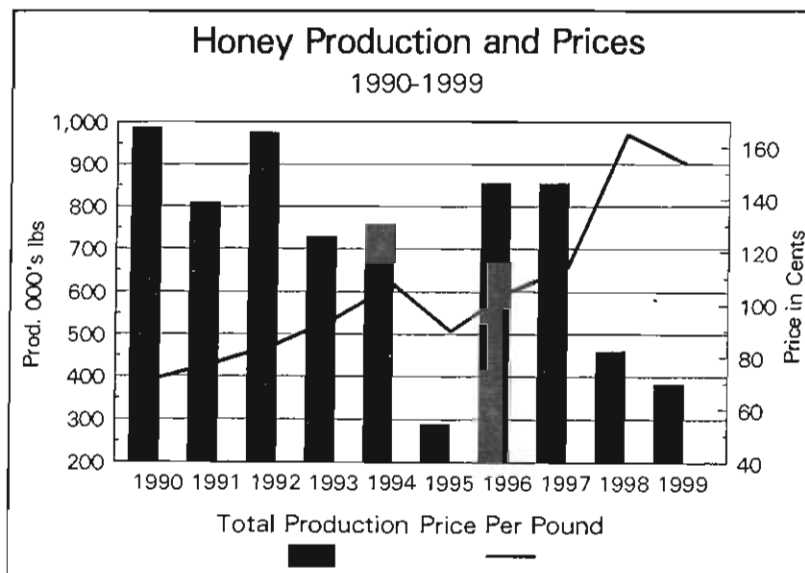
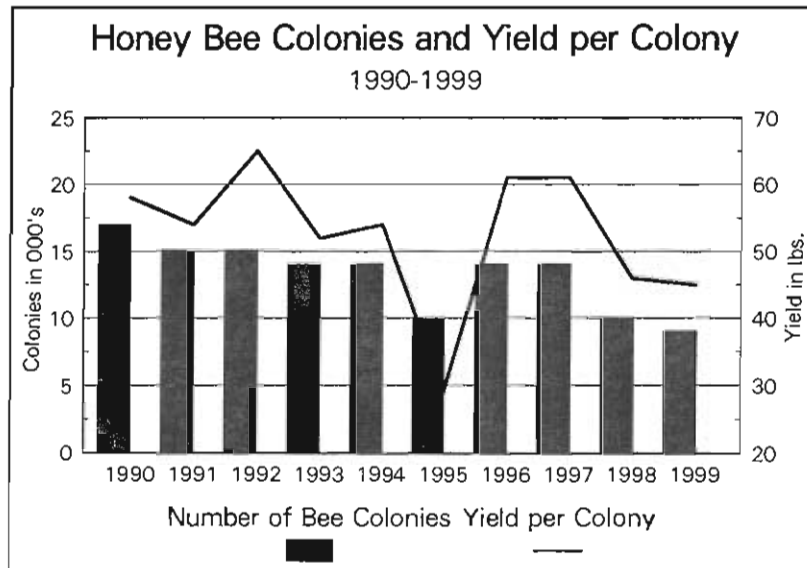
HOGS AND PIGS: Production and Income, Nevada, 1990-99

Year	Production	Marketings	Value of Production	Cash Receipts /1	Value Home Consumption	Gross Income
----- 000 Lbs. -----		----- 000 \$'s -----				
1990	5,460	5,510	2,390	2,476	97	2,573
1991	5,359	5,428	2,391	2,493	60	2,553
1992	4,242	4,790	1,618	1,879	51	1,930
1993	3,689	4,028	1,546	1,769	33	1,802
1994	4,581	4,682	1,764	1,837	26	1,863
1995	4,406	4,792	1,657	1,833	25	1,858
1996	3,748	3,956	1,918	2,021	34	2,055
1997	4,454	4,608	2,375	2,446	36	2,482
1998	2,698	2,755	800	821	21	842
1999	2,709	2,876	945	982	23	1,005

¹ Receipts from marketings and sale of farm slaughter.

HONEY: Production and Value, Nevada, 1990-99

Year	Colonies of Bees	Yield Per Colony	Total Production	Average Price Per Pound	Value of Production	Honey Stocks Dec. 15
	<i>000</i>	<i>Lbs.</i>	<i>000 Lbs.</i>	<i>Cents</i>	<i>000 \$'s</i>	<i>000 Lbs.</i>
1990	17	58	986	72	710	296
1991	15	54	810	78	632	275
1992	15	65	975	85	829	341
1993	14	52	728	95	692	328
1994	14	54	756	108	816	174
1995	10	29	290	90	261	38
1996	14	61	854	105	897	68
1997	14	61	854	114	974	171
1998	10	46	460	165	759	175
1999	9	45	383	154	590	257



MILK COWS & PRODUCTION OF MILK & MILKFAT, Nevada, 1990-99

Year	Number of Milk Cows ¹	Production of Milk and Milkfat ²				
		Per Milk Cow		Percentage of Fat in All Milk Production	Total	
		Milk	Milkfat		Milk	Milkfat
	- 1,000 Head -	- Pounds -		- Percent -	- Million Lbs.-	
1990	20.0	16,400	592	3.61	328	11.8
1991	19.3	17,668	638	3.61	341	12.3
1992	20.0	17,650	632	3.58	353	12.6
1993	20.0	17,400	619	3.56	348	12.4
1994	23.0	18,356	661	3.60	413	14.9
1995	24.0	18,128	653	3.60	426	15.3
1996	25.0	18,800	675	3.59	470	16.9
1997	26.0	18,346	659	3.59	477	17.1
1998	26.0	19,308	693	3.59	502	18.0
1999	25.0	19,880	690	3.47	497	17.2

¹ Average number during year, excludes heifers not yet fresh. ² Excludes milk sucked by calves.

MILK: Cows Milked, Production per Cow, Total Production, by Quarter, Nevada, 1997-99

Quarter	Cows Milked ¹			Milk Per Cow ²			Milk Production ²		
	1997	1998	1999	1997	1998	1999	1997	1998	1999
	----- 000's -----			----- Lbs. -----			----- Millions Lbs. -----		
Jan. - Mar.	26.0	25.0	25.0	4,600	4,500	4,700	115.0	113.0	118.0
Apr. - Jun.	26.0	25.0	25.0	4,500	4,800	5,100	120.0	120.0	128.0
Jul. - Sept.	26.0	25.0	25.0	4,500	4,700	5,100	120.0	118.0	128.0
Oct. - Dec.	26.0	25.0	25.0	4,700	4,600	4,900	122.0	115.0	123.0
Annual	26.0	25.0	25.0	18,300	18,600	19,880	477.0	465.0	497.0

¹ Excludes heifers not yet fresh. ² Excludes milk sucked by calves.

MILK: Utilization & Returns, Nevada, 1990-99

Year	Milk Used on Farms ¹	Sold to Plants or Dealers ²	Average Returns		Cash Receipts From Marketing
			Per Cwt Milk	Per Lb Milkfat	
	- Million Pounds -		- Dollars -		- 1,000 Dollars -
1990	7	321	13.20	3.66	42,372
1991	6	335	11.60	3.21	38,860
1992	5	348	12.40	3.46	43,152
1993	5	343	12.30	3.46	42,189
1994	7	406	12.50	3.47	50,750
1995	5	421	12.00	3.33	50,520
1996	5	465	13.40	3.73	62,310
1997	6	471	11.90	3.31	56,049
1998	5	497	13.80	3.84	68,586
1999	5	492	13.30	3.83	65,436

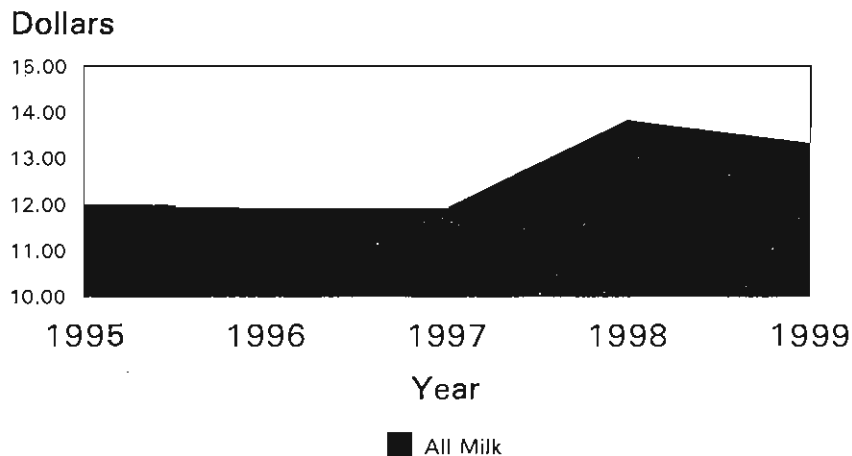
¹ Includes milk fed to calves or used for milk, cream, or butter on the farm.

² Includes any milk produced by dealers own herds and equivalent amounts of milk for cream sold to plants and dealers.

ALL MILK PRICES: Milk Sold by Farmers, by Month, Nevada 1995-99

Month	All Milk Price Per Cwt.				
	1995	1996	1997	1998	1999
	-----\$s-----				
January	13.20	13.20	12.70	13.40	17.40
February	12.00	12.00	11.50	13.60	17.10
March	12.00	12.00	11.80	13.60	14.10
April	11.70	11.70	11.90	12.70	14.10
May	11.70	11.70	11.50	13.00	11.10
June	11.50	11.50	11.10	12.30	11.60
July	11.50	11.50	11.00	12.90	11.50
August	11.50	11.50	10.90	13.20	12.20
September	11.70	11.70	11.50	14.40	12.70
October	12.90	12.00	12.30	15.30	14.60
November	12.20	12.20	12.80	15.90	13.40
December	12.50	11.50	13.40	17.00	13.10
Annual	12.00	11.90	11.90	13.80	13.30

**All Milk Annual Price
Nevada 1995-99**



MILK COWS AND PRODUCTION: By County, Nevada, 1998-99 ^{1/}

County	1998			1999		
	Milk Cows	Milk Per Cow	Milk Production	Milk Cows	Milk Per Cow	Milk Production
	#	Lb.	Million Lb.	#	Lb.	Million Lb.
Churchill	9,500	18,600	176.7	9,800	19,800	194.0
Clark	3,600	20,000	72.0	3,900	21,100	82.3
Douglas	1,200	17,100	20.5	700	18,300	12.8
Lyon	1,900	18,300	34.8	2,100	19,600	41.2
Nye	7,500	19,100	143.3	7,900	20,200	159.6
All Other Counties	1,300	14,500	18.8	600	11,800	7.1
State	25,000	18,300	466.0	25,000	19,900	497.0

^{1/} Totals may not add due to rounding.

AVERAGE PER ACRE VALUE OF FARM REAL ESTATE:

By Region and State, January 1, 1996-2000 ^{/1 /2 /3}

State	1996	1997	1998	1999	2000	% Change 1999-2000
	-----Dollars-----					Percent
Northeast:	2,220	2,240	2,280	2,370	2,470	4.2
Connecticut	5,950	5,950	5,950	6,300	6,600	4.8
Delaware	2,550	2,580	2,660	2,750	2,850	3.6
Maine	1,150	1,170	1,190	1,200	1,210	0.8
Maryland	3,110	3,150	3,180	3,300	3,500	6.1
Massachusetts	5,100	5,150	5,210	5,500	5,900	7.3
New Hampshire	2,250	2,250	2,250	2,250	2,300	2.2
New Jersey	7,100	7,100	7,000	7,000	7,100	1.4
New York	1,260	1,250	1,280	1,340	1,410	5.2
Pennsylvania	2,270	2,300	2,390	2,500	2,620	4.8
Rhode Island	6,500	6,500	6,500	6,500	6,500	0.0
Vermont	1,490	1,500	1,520	1,570	1,640	4.5
Lake States:	1,130	1,200	1,280	1,390	1,490	7.2
Michigan	1,420	1,530	1,670	1,850	2,100	13.5
Minnesota	1,030	1,090	1,160	1,230	1,270	3.3
Wisconsin	1,130	1,170	1,240	1,370	1,500	9.5
Corn Belt:	1,510	1,610	1,730	1,830	1,840	0.5
Illinois	1,900	1,980	2,130	2,250	2,220	-1.3
Indiana	1,740	1,870	2,060	2,220	2,210	-.05
Iowa	1,450	1,600	1,700	1,770	1,750	-1.1
Missouri	950	1,010	1,070	1,130	1,190	5.3
Ohio	1,820	1,890	2,040	2,220	2,250	1.4
Northern Plains:	463	481	499	510	526	3.1
Kansas	553	565	577	580	590	1.7
Nebraska	610	620	645	670	695	3.7
North Dakota	383	390	401	406	415	2.2
South Dakota	310	325	348	360	380	5.6
Appalachian:	1,550	1,630	1,720	1,840	1,940	5.4
Kentucky	1,300	1,350	1,450	1,530	1,590	3.9
North Carolina	1,900	2,000	2,080	2,250	2,400	6.7
Tennessee	1,530	1,650	1,810	1,950	2,100	7.7
Virginia	1,840	1,880	1,920	2,040	2,130	4.4
West Virginia	980	1,050	1,090	1,070	1,060	-.09
Southeast:	1,580	1,630	1,700	1,770	1,920	8.5
Alabama	1,320	1,360	1,440	1,520	1,680	10.5
Florida	2,150	2,200	2,240	2,260	2,400	6.2
Georgia	1,360	1,430	1,510	1,630	1,800	10.4
South Carolina	1,360	1,400	1,480	1,520	1,600	5.3
Delta States:	1,020	1,070	1,130	1,180	1,230	4.2
Arkansas	1,010	1,070	1,150	1,220	1,250	2.5
Louisiana	1,180	1,190	1,210	1,210	1,250	3.3
Mississippi	917	980	1,050	1,100	1,180	7.3
Southern Plains:	541	557	596	613	631	2.9
Oklahoma	547	570	610	625	634	1.4
Texas	540	554	593	610	630	3.3
Mountain:	383	399	415	426	440	3.3
Arizona	880	920	987	1,070	1,140	6.5
Colorado	558	590	618	630	640	1.6
Idaho	900	960	1,020	1,090	1,170	7.3
Montana	289	291	294	296	300	1.4
Nevada	332	366	392	420	440	4.8
New Mexico	212	215	217	217	215	-0.9
Utah	740	780	807	855	900	5.3
Wyoming	206	215	222	220	235	6.8
Pacific:	1,670	1,730	1,780	1,870	1,890	1.1
California	2,400	2,500	2,610	2,770	2,850	2.9
Oregon	928	960	960	1,000	1,020	2.0
Washington	1,120	1,160	1,190	1,190	1,150	-3.4
48 States	887	926	974	1,020	1,050	2.9

/1 Value of farmland and buildings.

/2 Estimates for 1996 and prior years previously published by Economic Research Service, ERS

/3 Excludes Native American Reservation Land

FARM LABOR AND WAGE RATES:

Mountain II Region, July 1999, October 1999, January 2000 and April 2000 ¹

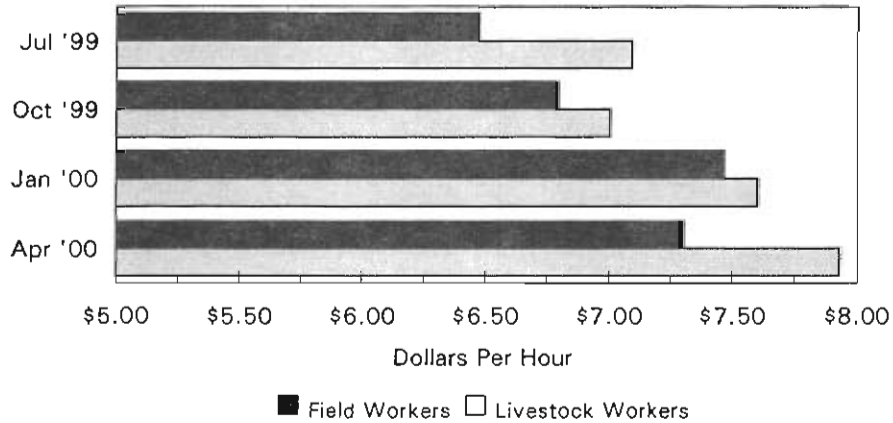
	July 11-17 1999	October 10-16 1999	January 9-15 2000	April 9-15 2000
	----- Workers on Farms (000) ² -----			
All Hired Workers	31	25	19	22
	----- Hours Worked per Worker ² -----			
All Hired Workers	42.5	46.5	40.9	44.5
	----- Type of Work - Dollars per Hour ² -----			
Field Workers	6.47	6.79	7.46	7.30
Livestock Workers	7.09	7.00	7.60	7.93
Field and Livestock Workers	6.73	6.90	7.56	7.51
Wage rates for all workers	7.26	7.23	8.09	7.84

¹ Mountain II Region consists of Colorado, Nevada and Utah.

² Excludes Agricultural service workers.

Labor Wage Rates

Mountain II Region, July 1999-April 2000



1999 PESTICIDE AND HERBICIDE APPLICATION SUMMARY

This summary was compiled from information contained in mandatory monthly reports submitted by the 1999 Custom Applicator licensees. Its accuracy is based on these monthly reports, and the data therein does not constitute approval or recommendations by the Nevada State Division of Agriculture or the Nevada Agricultural Statistics Service. This is not a complete summary in that it only contains the chemicals applied by custom applicators. It does not include chemical applications by individual farmers and ranchers who may apply chemicals on their own operations.

ALFALFA

PRODUCT APPLIED	TARGET PEST/USE	TOTAL ACRES
AMINL	WEEDS	125.00
BANVEL	WEEDS	50.00
BAYTHEROID	THRIP	125.00
BEACON	WEEDS	155.00
BUCTRIL	BLUE GRASS	25.00
BUCTRIL	WEEDS	491.70
BUCTRIL 2000	WEEDS	693.00
DIBROM 8E	GRASSHOPPERS	65.00
DIMATE	APHIDS	840.00
DIMATE	APHIDS/WEEVILL	233.00
DIMATE	THRIP	1,845.00
DIMATE	WEEVIL	1,165.00
DIMETHOATE	APHIDS	13,110.60
DIMETHOATE	APHIDS/THRIP	2,577.50
DIMETHOATE	GRASSHOPPERS	922.00
DIMATHOATE	THRIP	690.00
DIREX 4L	GRASSES	57.00
FURADAN	GRASSHOPPERS	170.00
FURADAN 4F	APHIDS/THRIP	223.00
FURADAN 4F	WEEVIL	4,524.60
GLYFOS	WEEDS	225.00
GRAMOXONE EXTRA	GRASSES	856.00
GRAMOXONE EXTRA	WEEDS	8,364.03
KERB 50	BLUE GRASS	25.00
LORSBAN 4E	APHIDS	2,958.00
LORSBAN 4E	APHIDS/WEEVIL	3,098.00
LORSBAN 4E	GRASSHOPPERS	550.00
LORSBAN 4E	THRIP	2,357.00
LORSBAN 4E	WEEVIL	1,730.00
LOW VOL 6	WEEDS	50.00
MALATHION	APHIDS	135.00
MALATHION 8	GRASSHOPPERS	38.00
PENNCAP	THRIP	750.00
PHENOXY 88	THRIP	125.00
POAST PLUS	GRASSES	195.00
POAST PLUS	WEEDS	120.00
POUNCE	THRIP	240.00
PURSUIT	GRASSES	673.00
PURSUIT	WEEDS	2,090.80
PURSUIT	WHITE TOP	61.75
PURSUIT DG	GARLIC	164.00
PURSUIT DG	WEEDS	1,835.70
ROUNDUP PRO	WEEDS	18.00
ROUNDUP ULTRA	ALFALFA	110.00
SELECT	GRASSES	61.00
SELECT	WEEDS	1,357.00
SELECT	WHEAT	125.00
SENCOR	WEEDS	2,037.30
SENCOR DF	WEEDS	195.00
SEVIN	GRASSHOPPERS	100.00
SEVIN	THRIP	380.00
TREELAN HFP	WEEDS	30.00
VELPAK	WEEDS	4,144.53
VELPAK L	GRASSES	842.00

1999 PESTICIDE AND HERBICIDE APPLICATION SUMMARY, continued

ALFALFA continued

PRODUCT APPLIED	TARGET PEST/USE	TOTAL ACRES
VELPAR L	WEEDS	16,567.90
WARRIOR	APHIDS	40.00
WARRIOR	APHIDS/WEEVIL	1,000.00
WARRIOR	THRIP	450.00
WARRIOR	WEEVIL	887.00
WARRIOR T	APHIDS/WEEVIL	6,528.00
WARRIOR T	WEEVIL	1,322.00
WEEDMASTER	WEEDS	375.00
WEEDONE LV4	WEEDS	177.00

Total Acres Treated: 91,766.21

ALFALFA SEED

PRODUCT APPLIED	TARGET PEST/USE	TOTAL ACRES
AMBUSH 25W	APHIDS	84.00
CAPTURE	APHIDS/LYGUS BUGS	600.00
CAPTURE	LYGUS BUGS	115.00
CAPTURE 2EC	APHIDS / LYGUS BUGS	483.00
COMITE	APHIDS / LYGUS BUGS	125.00
COMITE	SPIDER MITES	4,322.00
DIBROM 8E	APHIDS	85.00
DIBROM 8E	APHIDS/LYGUS BUGS	2,560.60
DIBROM 8E	GRASSHOPPERS	120.00
DIBROM 8E	LYGUS BUGS	1,420.70
DIMATE	APHIDS / LYGUS BUGS	140.00
DIMETHOATE	APHIDS	862.00
DIMETHOATE	APHIDS / LYGUS BUGS	3,202.00
DIMETHOATE	LYGUS BUGS	271.00
GRAMOXONE EXTRA	DEFOLIATION	1,813.20
KARMEX	WEEDS	93.00
KINETIC	MITES	1,007.00
LORSBAN 4E	APHIDS	150.00
LORSBAN 4E	APHIDS / LYGUS BUGS	172.00
LORSBAN 4E	LYGUS BUGS	1,642.90
LORSBAN 4E	WEEVIL	100.00
MALATHION	GRASSHOPPERS	80.00
METASYSTOX-R	APHIDS	191.00
METASYSTOX-R	APHIDS / LYGUS BUGS	872.00
METASYSTOX-R	LYGUS BUGS	448.00
METASYSTOX-R SP	APHIDS	106.00
MICROTHIOL	SPIDER MITES	79.00
PIRIMOR	APHIDS	2,826.00
PIRIMOR	APHIDS / LYGUS BUGS	1,344.60
PIRIMOR	LYGUS BUGS	1,557.00
RAPTOR	WEEDS	134.00
ROUNDUP PRO	ALFALFA SEED	45.00
SONOLAN	WEEDS	93.00
TENKOZ 638	ALFALFA SEED	434.00
TREFLAN TR-10	DODDER	770.00
WARRIOR	APHIDS / LYGUS BUGS	317.00
WARRIOR	LYGUS BUGS	120.00
WARRIOR T	APHIDS / LYGUS BUGS	1,043.60
WARRIOR T	GRASSHOPPERS	120.00
WARRIOR T	LYGUS BUGS	754.70
WEEDONE LV6	ALFALFA SEED	45.00

Total Acres Treated: 31,388.30

1999 PESTICIDE AND HERBICIDE APPLICATION SUMMARY, continued

BARLEY

PRODUCT APPLIED	TARGET PEST/USE	TOTAL ACRES
2,4-D AMINE	WEEDS	39.00
WEEDAR 6-1	WEEDS	16.00

Total Acres Treated: 55.00

BLACKFLY ABATEMENT

PRODUCT APPLIED	TARGET PEST/USE	TOTAL MILES
TEKRAN HPD	BLACKFLIES	47.00
VECTOBAC 12AS	BLACKFLIES	39.00

Total Acres Treated: 86.00

CORN

PRODUCT APPLIED	TARGET PEST/USE	TOTAL ACRES
ATRAZINE 4L	WEEDS	96.00
BLADEX 4L	WEEDS	76.00
ROUNDUP ULTRA	WEEDS	87.00
SELECT	WEEDS	56.00

Total Acres Treated: 315.60

FALLOW

PRODUCT APPLIED	TARGET PEST/USE	TOTAL ACRES
2,4-D LV6	SAGEBRUSH	70.00
AMINE 4	SAGEBRUSH	70.00
AMINE 4	WEEDS	15.00
BANVEL	WHITE TOP	60.00
CLARITY	WEEDS	22.00
ESCORT	WHITE TOP	200.00
GLYFOS	WEEDS	250.00
GRAMOXONE EXTRA	WEEDS	40.00
LORSBAN 4E	GRASSHOPPERS	132.00
ROUNDUP	WEEDS	45.50
ROUNDUP PRO	GRASSES	250.00
ROUNDUP ULTRA	WEEDS	535.50
TORDON	WEEDS	15.00
TOUCHDOWN	WEEDS	100.00
WEEDAR 64	WHITE TOP	60.00
WEEDMASTER	WEEDS	1,060.00
WEEDONE 638	SAGEBRUSH	115.00
WEEDONE 638	THISTLE	7.00
WEEDONE 638	WEEDS	20.00
WEEDONE LV6	WILLOWS	80.00

Total Acres Treated: 3,147.00

1999 PESTICIDE AND HERBICIDE APPLICATION SUMMARY, continued

GARLIC

PRODUCT APPLIED	TARGET PEST/USE	TOTAL ACRES
BUCTRIL	WEEDS	165.00
FUSILADE DX	GRASSES	220.00
GOAL	WEEDS	64.00
GRAMONXONE	WEEDS	308.00
EXTRA	WEEDS	220.00
ROUNDUP ULTRA	WEEDS	70.00
ROVRAL	FUNGUS	140.00

Total Acres Treated: 1,187.00

GRAIN

PRODUCT APPLIED	TARGET PEST/USE	TOTAL ACRES
2,4-D AMINE	WEEDS	47.00

Total Acres Treated: 47.00

GRASS

PRODUCT APPLIED	TARGET PEST/USE	TOTAL ACRES
2,4-D AMINE	WEEDS	522.00
BEACON	WEEDS	122.00
LORSBAN 4E	APHID	4.00
WEEDONE LVG	WEEDS	20.00

Total Acres Treated: 668.00

GRASS SEED

PRODUCT APPLIED	TARGET PEST/USE	TOTAL ACRES
BENLATE	FUNGUS	36.00
DI-SYSTON	LYGUS BUGS	73.00

Total Acres Treated: 109.00

1999 PESTICIDE AND HERBICIDE APPLICATION SUMMARY, continued

MINT

PRODUCT APPLIED	TARGET PEST/USE	TOTAL ACRES
MALATHION	APHIDS	45.00
METASYSTOX-R	APHIDS	440.00

Total Acres Treated: 485.00

MOSQUITO ABATEMENT

Product Applied	Target Pest/Use	Total Acres
ALTOSID LIQUID	MOSQUITOES	95.00
ALTOSID PELLETS	MOSQUITOES	600.00
ANVIL	MOSQUITOES	2,560.00
AQUABAC XT	MOSQUITOES	364.00
AQUIGUE MMF	MOSQUITOES	16.00
ATRAPA 8	MOSQUITOES	10,500.00
DIBROM	MOSQUITOES	4,480.00
DIBROM	MOSQUITOES	1,280.00
GB1111	MOSQUITOES	0.10
MALATHION	MOSQUITOES	1,806.00
MALATHION 8	MOSQUITOES	7,600.00
PYROCIDE 5%	MOSQUITOES	5,384.00
SCOURGE 4%	MOSQUITOES	4,732.00
TEKNAR HP	MOSQUITOES	1,566.00
VECTOBAC 12AS	MOSQUITOES	120.00
VECTOBAC-G	MOSQUITOES	0.10
VECTOLEX SAND	MOSQUITOES	167.05
VECTOLEX CG	MOSQUITOES	1.75

Total Acres Treated: 41, 272.00

NON-CROP LAND

Product Applied	Target Pest/Use	Total Acres
2,4-D	ALFALFA	10.00
2,4-D AMINE	ALFALFA	25.00
2,4-D AMINE	LEAFY SPURGE	8.00
2,4-D AMINE	SALT CEDAR	5.00
2,4-D AMINE	THISTLE	67.00
2,4-D AMINE	WEEDS	0.75
2,4-D AMINE	WHITE TOP	272.00
2,4-D AMINE	WHITE TOP/THISTLE	29.00
ARSENAL	SALT CEDAR	36.00

1999 PESTICIDE AND HERBICIDE APPLICATION SUMMARY, continued

NON-CROP LAND continued

Product Applied	Target Pest/Use	Total Acres
ARSENAL	WEEDS	10.00
CREDIT	WEEDS	805.00
DIUREX 4L	WEEDS	60.00
DIUREX	WEEDS	958.00
ESCORT	WHITE TOP	62.10
GARLON	WHITE TOP	16.00
GARLON	WHITE TOP / THISTLE	30.00
KARMEX	WEEDS	30.00
LOW VOL 6	BRUSH	25.00
OUST	WEEDS	30.00
PATHFINDER	SALT CEDAR	17.00
PATHFINDER	WEEDS	1.00
PRAMITOL 25E	WEEDS	12.11
PROMETON	WEEDS	59.92
ROUNDUP DRY PAK	SALT CEDAR	5.00
ROUNDUP DRY PAK	WEEDS	12.00
ROUNDUP PRO	SALT CEDAR	32.00
ROUNDUP PRO	WEEDS	78.00
ROUNDUP ULTRA	GRASSES	1.00
SOLUTION	WEEDS	1,839.00
TORDON	LEAFY SPURGE	8.00
TORDON	THISTLE	24.00
TORDON	WHITE TOP / THISTLE	29.00
WEEDMASTER	WEEDS	12.00

Total Acres Treated: 4,608.88

OATS

Product Applied	Target Pest/Use	Total Acres
2,4-D AMINE	WEEDS	57.00
AMINE 4	WEEDS	60.00
BANVEL	WEEDS	50.00
LOW VOL 6	WEEDS	64.00
MCP AMINE	WEEDS	80.00
WEEDAR 64	WEEDS	33.00
WEEDAR 64	WEEDS	292.00

Total Acres Treated: 636.00

ONION SEED

PRODUCT APPLIED	TARGET PEST/USE	TOTAL ACRES
ROVRAL	BLIGHT	24.00
WARRIOR	BLIGHT	24.00

Total Acres Treated 48.00

1999 PESTICIDE AND HERBICIDE APPLICATION SUMMARY, continued

ONIONS

PRODUCT APPLIED	TARGET PEST/USE	TOTAL ACRES
GRAMOXONE EXTRA	WEEDS	34.00
ROUNDUP PRO	WEEDS	20.00
ROUNDUP ULTRA	WEEDS	30.00
WARRIOR T	THRIP	22.00

Total Acres Treated: 106.00

PASTURE

PRODUCT APPLIED	TARGET PEST/USE	TOTAL ACRES
2,4-D AMINE	WEEDS	10.00
BANVEL	WEEDS	50.00
CLARITY	KNAPP WEED	57.00
DIMETHOATE	THRIP	60.00
EXCORT	WHITE TOP	615.10
LORSBAN 41E	THRIP	60.00
LOW VOL 6	WEEDS	50.00
ROUNDUP DRY PAK	GRASSES	10.00
WEEDAR 64	WEEDS	60.00
WEEDMASTER	THISTLE	1,139.00
WEEDMASTER	WEEDS	933.00
WEEDONE 638	WEEDS	138.00

Total Acres Treated: 3,182.10

PONDS

PRODUCT APPLIED	TARGET PEST/USE	TOTAL ACRES
RODEO	TULE	105.00

Total Acres Treated: 105.00

POTATOES

PRODUCT APPLIED	TARGET PEST/USE	TOTAL ACRES
AMBUSH	LOOPERS	60.00
BRAVO	BLIGHT	5,738.40
DIMETHOATE	APHIDS	60.00
DIQUAT	DEFOLIATION	654.00
DITHANE	BLIGHT	451.00
ENDOSULFAN	APHIDS	472.60
ENDOSULFAN	BLIGHT	4,331.00
KOCIDE	BLIGHT	395.00
POLYRAM	BLIGHT	4,877.00
QUADRI	BLIGHT	5,588.50
SUPER TIN	BLIGHT	4,277.00
THIODAN	BLIGHT	222.00
VAPAM	NEMATODE	38.00

Total Acres Treated: 27,164.50

1999 PESTICIDE AND HERBICIDE APPLICATION SUMMARY, continued

RANGELAND

PRODUCT APPLIED	TARGET PEST/USE	TOTAL ACRES
2,4-AMINE	RABBIT BRUSH	40.00
2,4-D AMINE	THISTLE	20.00
ARSENAL	SALT CEDAR	6.00
RODEO	THISTLE	1.00
ROUNDUP PRO	SALT CEDAR	6.00
TORDON	THISTLE	1.00

Total Acres Treated: 74.00

RIGHT OF WAY

PRODUCT APPLIED	TARGET PEST/USE	TOTAL ACRES
DIURON SOLUTION	WEEDS	533.00
	WEEDS	533.00

Total Acres Treated: 1,066.00

RYE

PRODUCT APPLIED	TARGET PEST/USE	TOTAL ACRES
WEEDONE 638	WEEDS	266.00

Total Acres Treated: 266.00

STORED POTATOES

PRODUCT APPLIED	TARGET PEST/USE	TOTAL ACRES
CIPC	SPROUTING	140,000.00

Total CWT Treated: 140,000.00

1999 PESTICIDE AND HERBICIDE APPLICATION SUMMARY, continued

STRAWBERRY

PRODUCT APPLIED	TARGET PEST/USE	TOTAL ACRES
METHYL BRO 67/37	NEMATODES	39.25

Total Acres Treated: 38.00

SUDAN GRASS

PRODUCT APPLIED	TARGET PEST/USE	TOTAL ACRES
BANVEL	WEEDS	100.00

Total Acres Treated: 200.00

TIMOTHY

PRODUCT APPLIED	TARGET PEST/USE	TOTAL ACRES
2,4-D	WEEDS	250.00
AMINE 4	ALFALFA	187.00
BUCTRIL	ALFALFA	125.00
DIMETHOATE	THRIP	625.00
LORSBAN 4E	THRIP	625.00
WEEDMASTER	ALFLAFA	187.00

Total Acres Treated: 1,999.00

WHEAT

PRODUCT APPLIED	TARGET PEST/USE	TOTAL ACRES
2,4-D AMINE	WEEDS	55.00
2,4-D LV6	WEEDS	49.00
ATRAPA 8	APHIDS	40.00
BANVEL	WEEDS	350.00
CERONE	GROWTH REGULATION	56.00
DI-SYSTON	APHIDS	52.00
DIMETHOATE	APHIDS	1,674.00
DIMETHOATE	GRASSHOPPERS	300.00
DIMETHOATE B267	APHIDS	190.00
DISYSTON 8	APHIDS	616.00
HARMONY EXTRA	GARLIC	150.00
LORSBAN 4E	APHIDS	100.00
WEEDAR 64	WEEDS	430.00
WEEDONE 638	WEEDS	1,644.00

Total Acres Treated: 5,706.00

DIRECTORY: Cooperative Extension and Farm Services Agency (FSA) Office Locations

Nevada Cooperative Extension Offices

State Office

University of Nevada-Reno
Mail Stop 404
Reno, NV 89557
(775) 784-7070

Carson City / Storey County
2621 Northgate Ln, Suite 15
Carson City, NV 89706
(775) 887-2252

Churchill County
111 Sheckler Road
Fallon, NV 89406
(775) 423-5121

Clark County
2345 Red Rock, Suite 100
Las Vegas, NV 89146
(702) 222-3130

East Clark County
P.O. Box 126
Logandale, NV 89021
(702) 397-2604

Douglas County
P.O. Box 338
Minden, NV 89423-338
1329 Waterloo Lane
Gardnerville, NV 89410
(775) 782-9960

Elko County
1500 College Parkway
Elko, NV 89801
(775) 738-7291

Wendover
P.O. Box 2409
Wendover, NV 89883
(775) 664-4359

Esmeralda / Northern Nye Co.
Old Court House
#1 Fran Kee St.
P.O. Box 231
Tonopah, NV 89049-0231
(775) 482-6794

Eureka County
P.O. Box 613
701 S. Main Street
Eureka, NV 89316-0613
(775) 237-5326

Humboldt County
Fairgrounds
Winnemucca, NV 89445
(775) 623-6304

Lander County
815 N Second Street
Battle Mtn., NV 89820-8309
(775) 635-5565

Lincoln County
P.O. Box 68
360 Lincoln Street
Caliente, NV 89008-0068
(775) 726-3109

Lyon County
P.O. Box 811
26 Nevin Way
Yerington, NV 89447
(775) 463-6541

Nye County (Southern)
P.O. Box 1090
Calvada Blvd. & Dandelion St.
Pahrump, NV 89041
(775) 727-5532

Pershing County
P.O. Box 239
810 6th Street
Lovelock, NV 89419
(775) 273-2923

Washoe County
P.O. Box 11130
5305 Mill St.
Reno, NV 89520-0027
(775) 784-4848

Washoe County / Incline Village
Branch
P.O. Box 8208
865 Tahoe Blvd., Ste. 110
Incline Village, NV 89452
(775) 832-4150

White Pine County
955 Campton
Ely, NV 89301
(775) 289-4459

Nevada FSA Offices

Nevada State FSA Office
1755 E Plumb Lane, Suite 202
Reno, NV 89502
(775) 784-5411

Elko FSA Office
2002 Idaho Street
Elko, NV 89801-2627
(775) 738-6445
(Serves Elko & Eureka Counties)

Ely FSA Office
74 E. North Industrial Way
HC 33 Box 33453
Ely, NV 89301
(775) 289-4990
(Serves Lincoln & White Pine
Counties)

Fallon FSA Office
111 Sheckler Road, Suite B
P.O. Box 1205
Fallon, NV 89406
(775) 423-5127
(Serves Churchill, Storey & Washoe
Counties)

Minden FSA Office
1528 US Hwy. 395 N, Ste. 100-B
Gardnerville, NV 89410-5226
(775) 782-3661
(Serves Douglas County and Carson
City)

Pershing County FSA Office
11th & Cornell Street, Suite #1
P.O. Box 1070
Lovelock, NV 89419-1070
(775) 273-2922
(Serves Pershing County)

Winnemucca FSA Office
1200 Winnemucca Blvd., East
Winnemucca, NV 89455-2920
(775) 623-5025
(Serves Humboldt & Lander
Counties)

Yerington FSA Office
215 W Bridge St, Suite 10-A
Yerington, NV 89447-0803
(775) 463-2855
(Serves Lyon, Esmeralda & Mineral
Counties)

United States Department of Agriculture
National Agricultural Statistics Service
State Statistical Offices

Alabama	334-279-3555	Herb Vanderberry	P.O. Box 240578, Montgomery, AL 36124-0578
Alaska	907-745-4272	Dave Mueller	P.O. Box 799, Palmer, AK 99645
Arizona	602-280-8850	Will Sherman	3003 N. Central Ave., Ste 950, Phoenix, AZ 85012
Arkansas	501-296-9926	Ben Klugh	2301 S. Univ. Ave, Rm. 103 Little Rock, AR 72204
California	916-498-5161	Jim Tippet	P.O. Box 1258, Sacramento, CA 95812
Colorado	303-236-2300	Renee Liles	P.O. Box 150969, Lakewood, CO 80215-0969
Delaware	302-739-4811	Tom Feürer	2320 S. Dupont Hwy., Oover, DE 19901
Florida	407-648-6013	John Witzig	P.O. Box 530105, Orlando, FL 32853
Georgia	706-546-2236	Dave Abbe	Stephens Fed. Bldg., Ste 320, Athens, GA 30601
Hawaii	808-973-2907	Don Martin	P.O. Box 22159, Honolulu, HI 96823-2159
Idaho	208-334-1507	Don Gerhardt	P.O. Box 1699, Boise, ID 83701
Illinois	217-492-4295	Garry Kepley	P.O. Box 19283, Springfield, IL 62794-9283
Indiana	765-494-8371	Ralph Gann	Purdue Univ., 1148 AGAD Rm 223 W. Lafayette, IN 47907
Iowa	515-284-4340	Jim Sands	210 Walnut St., Rm 833, Des Moines, IA 50309
Kansas	785-233-2230	Eldon Thiessen	P.O. Box 3534, Topeka, KS 66601-3534
Kentucky	502-582-5293	Lee Brown	P.O. Box 1120, Louisville, KY 40201
Louisiana	225-922-1362	Dave Frank	P.O. Box 65038, Baton Rouge, LA 70896-5038
Maryland	410-841-5740	Ray Garibay	50 Harry S. Truman Pkwy, Ste 202, Annapolis, MD 21401
Michigan	517-324-5300	Dave Kleweno	P.O. Box 26248, Lansing, MI 48909
Minnesota	651-296-2230	Mike Hunst	P.O. Box 7068, St. Paul, MN 55107
Mississippi	601-965-4575	Tommy Gregory	P.O. Box 980, Jackson, MS 39205
Missouri	573-876-0950	Gene Danekas	P.O. Box L, Columbia, MO 65205
Montana	406-441-1240	Peggy Stringer	301 S. Park Fed. Bldg. Drawer 10033, Helena, MT 59626
Nebraska	402-437-5541	Dave Loos	P.O. Box 81069, Lincoln, NE 68501
Nevada	702-784-5584	Martin Owens	P.O. Box 8880, Reno, NV 89507
New England	603-224-9639	Aubrey Davis	P.O. Box 1444, Concord, NH 03302-1444
New Jersey	609-292-6385	Vic Tolomeo	CN-330 New Warren St., Rm 205, Trenton, NJ 08625
New Mexico	505-522-6023	Charles Gore	P.O. Box 1809, Las Cruces, NM 88004
New York	518-457-5570	Steve Ropel	Dept. of Agr., 1 Winners Cr, Albany, NY 12235
North Carolina	919-856-4394	Bob Murphy	P.O. Box 27767, Raleigh, NC 27611
North Dakota	701-239-5306	Larry Beard	P.O. Box 3166, Fargo, ND 58108
Ohio	614-728-2100	Jim Ramey	P.O. Box 686, Columbus, OH 43068-0686
Oklahoma	405-522-6190	Barry Bloyd	P.O. Box 528804, Oklahoma City, OK 73152
Oregon	503-326-2131	Homer Rowley	1220 S.W. Third Ave, Rm 1735, Portland, OR 97204
Pennsylvania	717-787-3904	Wally Evans	Rm G-19, 2301 N. Cameron St., Harrisburg, PA 17110
South Carolina	803-765-5333	Bob Graham	P.O. Box 1911, Columbia, SC 29202
South Dakota	605-330-4235	Bill Hamlin	P.O. Box 5068, Sioux Falls, SD 57117
Tennessee	615-781-5300	Debra Kenerson	P.O. Box 41505, Nashville, TN 37204-1505
Texas	512-916-5581	Robin Roark	P.O. Box 70, Austin, TX 78767
Utah	801-524-5003	DelRoy Gneiting	P.O. Box 25007, Salt Lake City, UT 84125
Virginia	804-771-2493	Steve Manheimer	P.O. Box 1659, Richmond, VA 23218
Washington	360-902-1940	Doug Hasslen	P.O. Box 609, Olympia, WA 98507
West Virginia	304-345-5958	Dave King	1900 Kanawha Blvd.E, Charleston, WV 25305
Wisconsin	608-224-4848	Bob Battaglia	P.O. Box 8934, Madison, WI 53708
Wyoming	307-432-5600	Dick Coulter	P.O. Box 1148, Cheyenne, WY 82003

