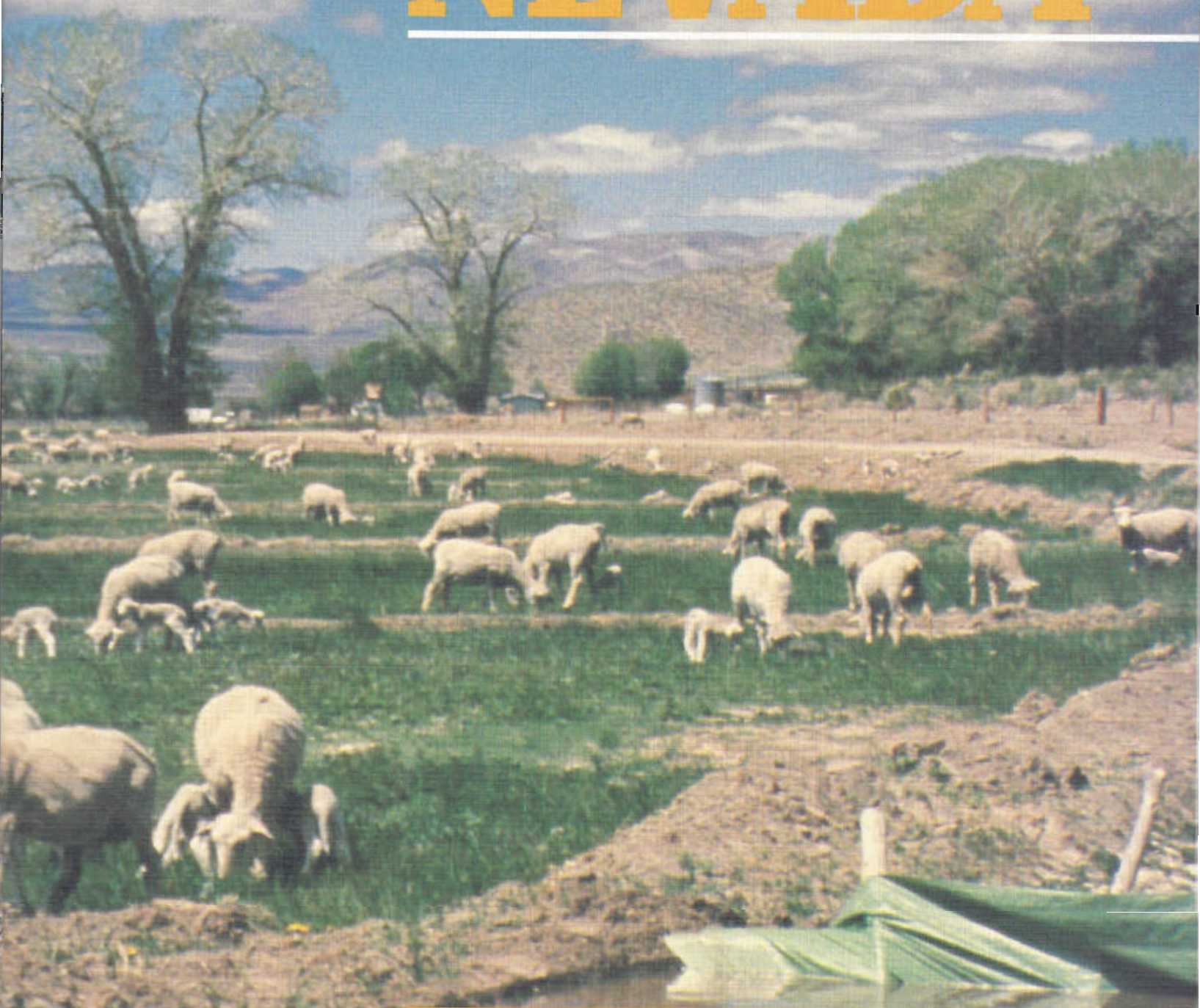


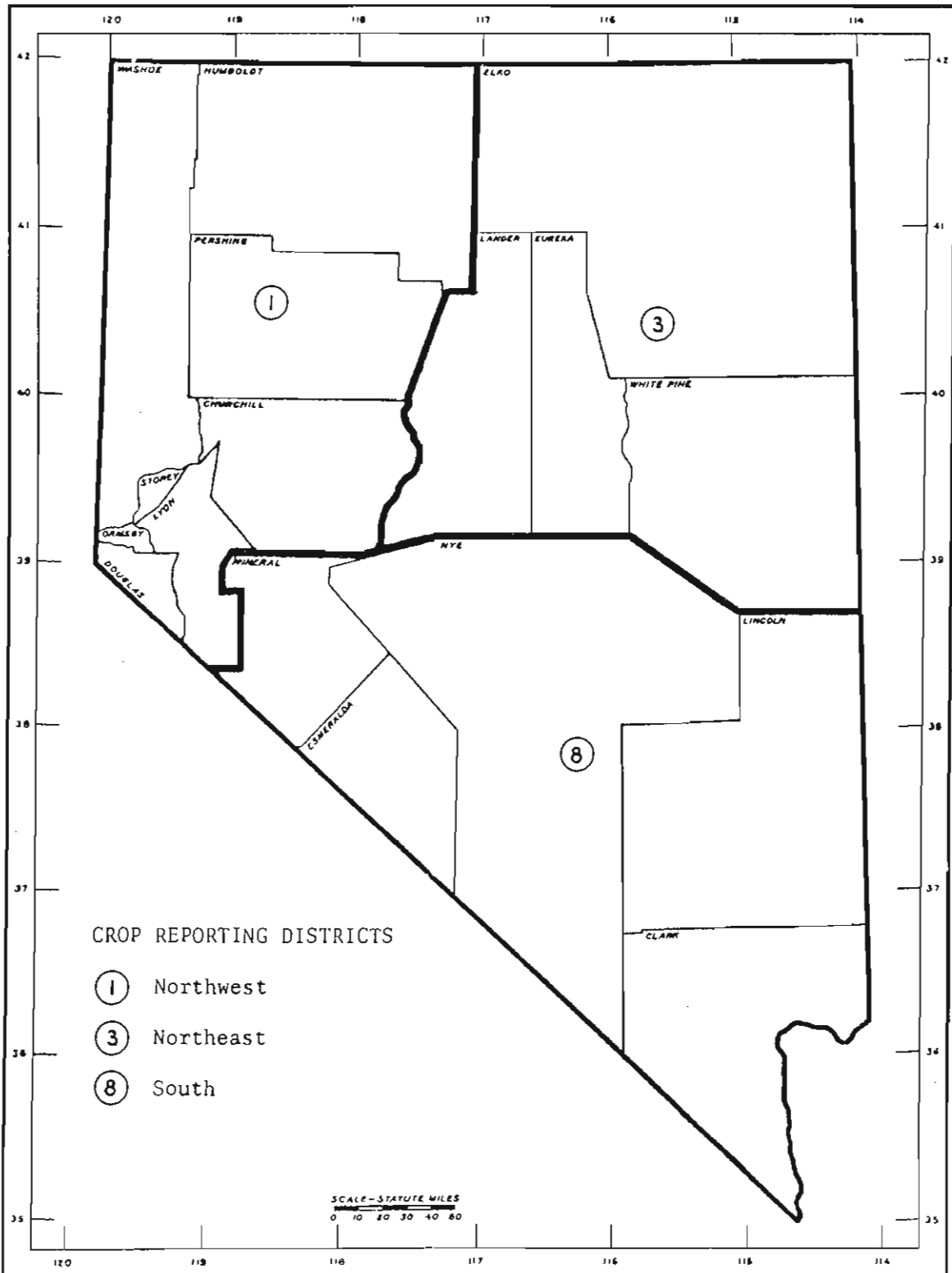
# NEVADA

---



**Agricultural Statistics**  
**1989-90**

NEVADA COUNTIES AND CROP REPORTING DISTRICTS



COVER PHOTO:  
 Sheep graze along the East Walker River  
 at the Rafter 7 Ranch near Yerington.  
 Photograph by JOHN RIES and courtesy  
 of the Extension Communications Office.

---

---

# **Nevada Agricultural Statistics 1990**

---

---

**Nevada Department of Agriculture**  
Thomas W. Ballow, Executive Director

**University of Nevada, Reno**  
**College of Agriculture**  
Bernard M. Jones, Dean and Director

---

Cooperating with

**U.S. Department of Agriculture**  
**National Agricultural Statistics Service**  
Charles E. Caudill, Administrator

Compiled by

**Nevada Agricultural Statistics Service**  
P.O. Box 8880, Reno, NV 89507  
Phone (702) 784-5584

---

C. R. "Bud" Lies, State Statistician

Peter Dale Weber, Deputy State Statistician

Marjorie N. McClung, Administrative Technician

Caroline Sibley, Statistical Clerk

Richard Holcomb, Student Assistant

---

September 1990

---



STATE OF NEVADA  
EXECUTIVE CHAMBER  
Carson City, Nevada 89710

BOB MILLER  
Governor



TO THE PEOPLE OF NEVADA:

Agriculture has always been the core of rural Nevada. Farming and ranching in the state provides the cornerstone for our rural economy. It provides a foundation for our work ethic, our moral values, and it maintains those qualities of life that we value so much in our state.

It seems there is good news and bad news every year in the agricultural industry. The fourth consecutive year of drought in most of the state is certainly bad news. The drought underscores the unpredictability of agriculture. It serves as a reminder of agriculture's importance to our lives. Too often we take agriculture for granted, losing sight of the fact that our highly productive, efficient farmers and ranchers provide us with food and fiber that is priced well below that in other nations.

I hope all Nevadans will have the opportunity to review this publication. The many statistics truly reflect agriculture's importance to our state and generate a better understanding of the agricultural economy.

Sincerely,

BOB MILLER,  
Governor

STATE OF NEVADA

BOB MILLER  
GOVERNOR



STATE BOARD OF AGRICULTURE  
M. KENT "TIM" HAFEN, CHAIRMAN  
JAMES E. CONNELLEY  
JOHN D. COOPER  
DON J. DAVIS  
FREDERICK W. DRESSLER  
HAROLD W. HALL  
DONNELL J. RICHARDS  
DARREL H. SOUTHWORTH  
JOHN H. WHITE  
RONALD YAMAMOTO

DEPARTMENT OF AGRICULTURE

MAILING ADDRESS—P.O. Box 11100  
RENO, NEVADA 89510-1100



To Friends of Agriculture:

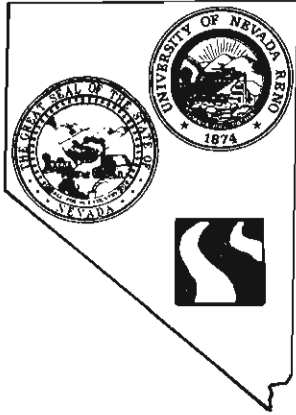
Despite being in our fourth year of drought and going through some financial hardships the past few years, agriculture in the state is still "weathering the storm." These difficult times have certainly challenged Nevada producers to make the right business and management decisions. It has also emphasized the need for accurate information on which to base these decisions. Although nothing can assist the decision-making process like a timely 2-inch rain, I am certain that this publication will prove useful when making those decision that will ultimately determine the success of an agricultural business.

The facts and figure presented here are clean indications of agriculture's importance to Nevada's economy. It behooves all of us to work toward a brighter future for Nevada agriculture.

Sincerely,

A handwritten signature in cursive script that reads "Thomas W. Ballow".

Thomas W. Ballow  
Executive Director



## NEVADA AGRICULTURAL STATISTICS SERVICE

P.O. Box 8880  
Reno, Nevada 89507-8880

Phone: (702) 784-5584

### FOREWORD

The Nevada Agricultural Statistics Service continues as a major source of information concerning Nevada agriculture. This annual summary includes information on crop production, livestock numbers, farm income, prices, land values and weather. It also contains county estimates for major crop and livestock items. Estimates of barley and milk cows for the period 1984-88 and cattle and calves for 1987 and 1988 have been revised following the 1987 Census of Agriculture.

I appreciate the cooperation given to us by the State's farmers, ranchers and agribusinesses who provide most of the basic information used in developing the statistics presented in this Bulletin. My gratitude is also extended to the County Extension Agents, County ASCS Directors and their staff as well as other University staff, State and Federal agencies.

Finally, a special thanks to our field interviewers and telephone interviewers who are a vital link in our data gathering process, and to all members of my office staff for their excellent work and continued dedication in preparing this Bulletin.

C.R. "Bud" Lies  
State Statistician

Cooperating with

University of Nevada-Reno  
College of Agriculture

State of Nevada  
Department of Agriculture

## TABLE OF CONTENTS

### GENERAL

Table of Contents . . . . .	5
Nevada Facts and Figures . . . . .	6
Number of Farms and Land in Farms. . . . .	7
Cash Receipts from Farm Marketings 8&10	
Farm Income. . . . .	11
Crop/Weather Summary . . . . .	12
Precipitation Data . . . . .	13
Barley Census Revisions. . . . .	31
Milk Cows, Census Revisions. . . . .	32
Land Values. . . . .	33
Farm Labor . . . . .	34
Extension and ASCS County Offices. . . . .	44

### FIELD CROPS

Crop Summary . . . . .	14
Winter Wheat, Acreage/Yield/Production	15
Winter Wheat by Counties . . . . .	15
Spring Wheat, Acreage/Yield/Production	15
Spring Wheat by Counties . . . . .	15
Barley, Acreage/Yield/Production . . . . .	16
Barley by Counties . . . . .	16
Hay, Acreage/Yield/Production. . . . .	16
Hay by Counties. . . . .	17

### SPECIALTY CROPS

Potatoes, Acreage/Yield/Production . . . . .	18
Onions, Acreage/Yield/Production . . . . .	18
Garlic, Acreage/Yield/Production . . . . .	18
Alfalfa Seed, Acreage/Yield/Production	19
Alfalfa Seed by Counties . . . . .	19

### LIVESTOCK - GENERAL

Number of Livestock Farms & Ranches. . . . .	7
Range and Pasture Condition. . . . .	23
Honey Bee Colonies . . . . .	23
Livestock Slaughter. . . . .	27

### CATTLE

Inventory, Supply, and Disposition . . . . .	21
Production and Income. . . . .	21
Cattle and Calves on Feed. . . . .	22
Inventory by Counties. . . . .	22

### SHEEP AND LAMBS

Inventory, Supply, and Disposition . . . . .	24
Production and Income. . . . .	24
Wool Production and Value. . . . .	25
Inventory by Counties. . . . .	25

### HOGS AND PIGS

Inventory, Supply & Disposition. . . . .	26
Production and Income. . . . .	26

### DAIRY AND DAIRY PRODUCTS

Milk Production, Value/Utilization . . . . .	28
Milk Cows and Production . . . . .	28
Milk, Price, and Fat Test . . . . .	29
Dairy Products Manufactured. . . . .	29
Milk Cows & Production by Counties . . . . .	29

### POULTRY

Number on Farms. . . . .	30
Value. . . . .	30
Layers, Eggs per Layer/Production. . . . .	30
Eggs, Production/Disposition/Income. . . . .	30

### PESTICIDE AND HERBICIDE USE

Aerial & Ground Application . . . . .	35-43
---------------------------------------	-------

NEVADA FACTS & FIGURES

**NEVADA POPULATION**

Total, 1990 Preliminary Census: 1,193,285

Farm: 5,539  
 People per Farm/Ranch: 2.3

**NEVADA LAND & UTILIZATION**

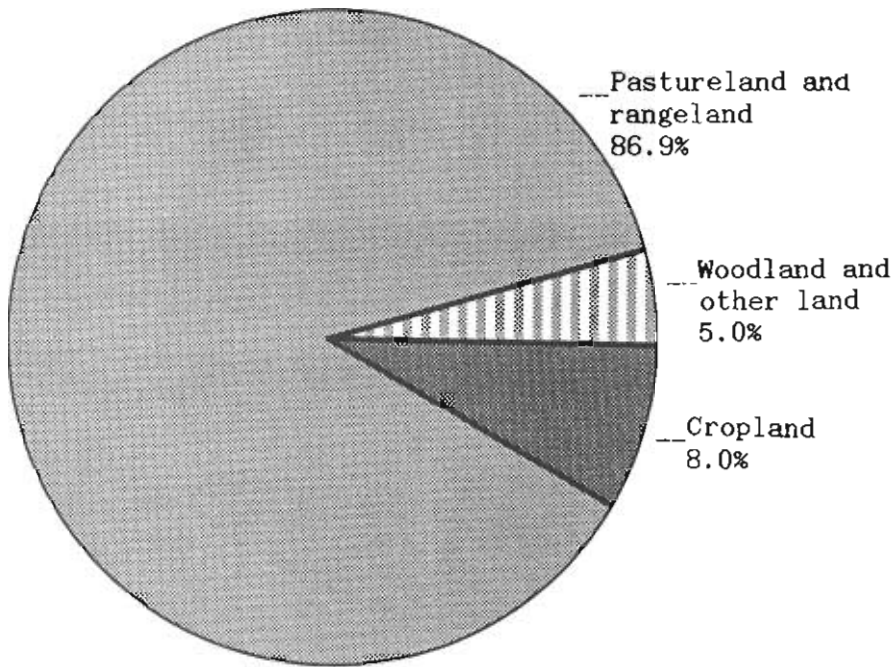
Total Land Area: 109,894 Square Miles  
 OR 70.3 Mil. Acres

People Per Square Mile: 10.9

All Land in Farms & Ranches: 8,900,000 Acres 1/

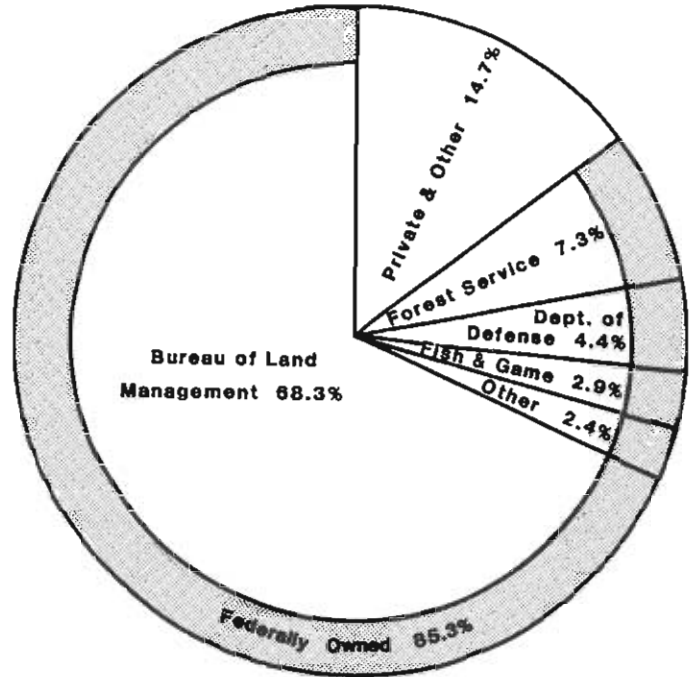
Proportion of Land in Farms & Ranches: 14 Percent  
1/ 1989 preliminary.

**LAND IN FARMS & RANCHES**  
 utilization as a percent of total 1/



1/ 1987 U.S. Census of Agriculture.

**NEVADA LAND AREA**  
 ownership as a percentage of total



Source: BLM "Public Land Statistics 1984".

Other cropland--cover, crops failed, and summer fallow 2.3%  
 Cropland idle/ 6.2%  
 Cropland pastured 26.0%  
 Cropland harvested 65.5%

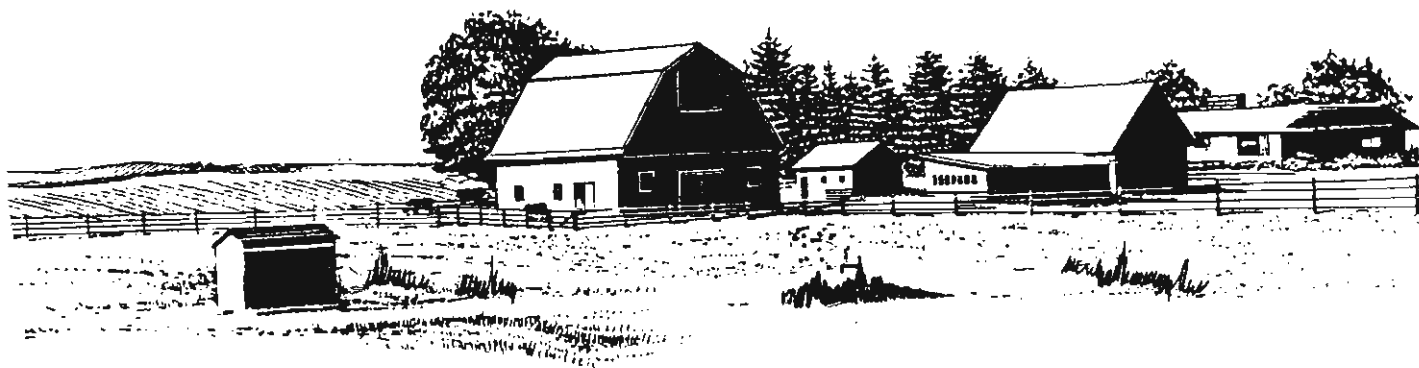




**NUMBER OF FARMS AND LAND IN FARMS AND RANCHES, 1978-90 1/**

YEAR	NEVADA			UNITED STATES		
	NUMBER OF FARMS	AVERAGE SIZE OF FARMS	ALL LAND IN FARMS	NUMBER OF FARMS	AVERAGE SIZE OF FARMS	ALL LAND IN FARMS
		<i>Acres</i>	<i>000 Acres</i>	<i>000's</i>	<i>Acres</i>	<i>000 Acres</i>
1978. . . .	2,900	3,100	8,990	2,436	429	1,044,790
1979. . . .	2,900	3,100	8,990	2,437	428	1,042,015
1980. . . .	2,900	3,100	8,990	2,440	426	1,038,885
1981. . . .	3,100	2,871	8,900	2,440	424	1,034,190
1982. . . .	2,900	3,069	8,900	2,407	427	1,027,795
1983. . . .	2,800	3,179	8,900	2,379	430	1,023,425
1984. . . .	2,800	3,179	8,900	2,334	436	1,017,803
1985. . . .	2,700	3,296	8,900	2,293	441	1,012,073
1986. . . .	2,700	3,296	8,900	2,250	447	1,005,333
1987. . . .	2,600	3,423	8,900	2,213	451	998,923
1988. . . .	2,600	3,423	8,900	2,197	453	994,543
1989. . . .	2,500	3,560	8,900	2,171	459	991,153
1990 2/ . .	2,500	3,560	8,900	2,143	461	987,721

1/ Farm is defined as a place with annual sales of agricultural products of \$1,000 or more. 2/ Preliminary.



**NUMBER OF LIVESTOCK FARMS, 1978-89**

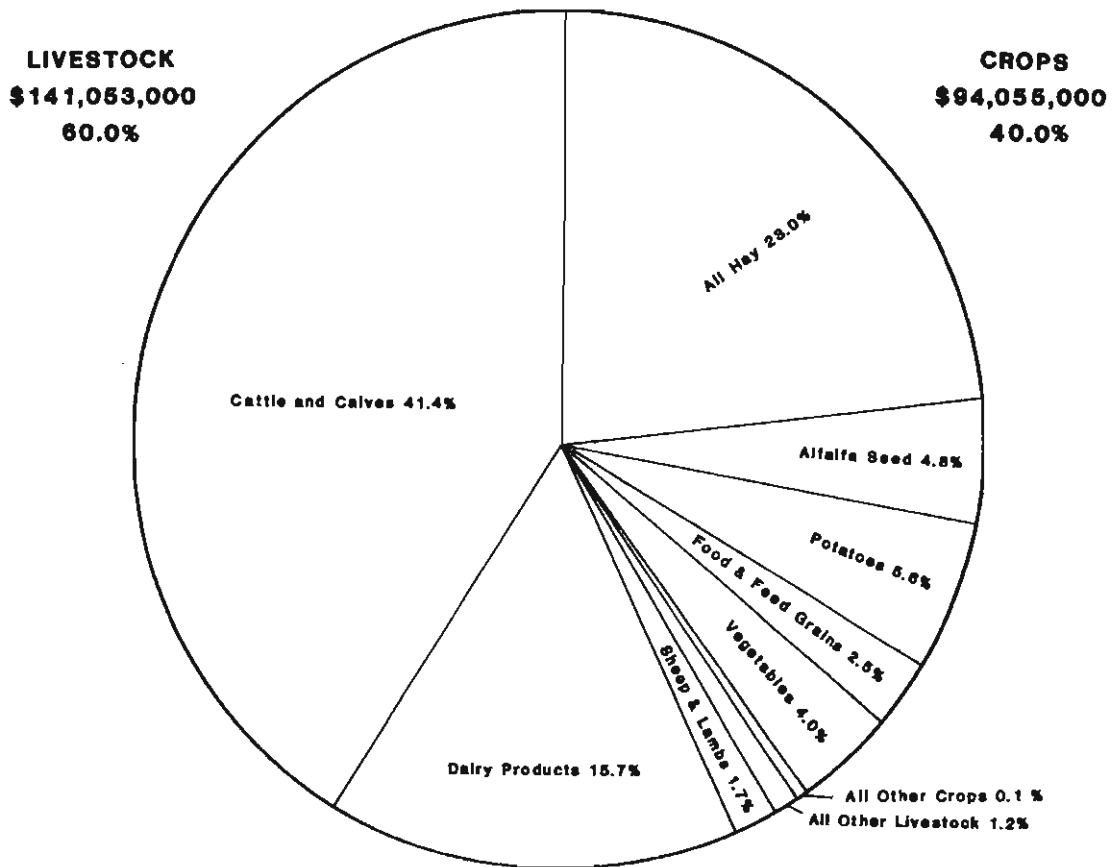
YEAR	NEVADA				UNITED STATES			
	CATTLE	MILK COWS	SHEEP	HOGS	CATTLE	MILK COWS	SHEEP	HOGS
	<i>Number</i>				<i>000's</i>			
1978. . . .	1,800	400	280	300	1,699.0	369.2	115.7	635.3
1979. . . .	1,800	400	290	250	1,638.5	350.0	116.1	653.6
1980. . . .	1,700	400	300	220	1,622.5	335.8	119.9	670.4
1981. . . .	1,700	400	320	220	1,621.6	322.9	125.6	580.1
1982. . . .	1,700	400	320	210	1,611.0	312.1	128.1	482.2
1983. . . .	1,700	400	300	200	1,583.4	297.7	126.4	462.1
1984. . . .	1,700	400	270	200	1,538.4	282.4	123.5	428.5
1985. . . .	1,700	300	270	180	1,487.8	269.1	117.4	388.6
1986. . . .	1,700	300	300	170	1,438.6	249.2	114.8	346.1
1987. . . .	1,700	300	300	150	1,396.5	227.9	113.6	328.6
1988. . . .	1,700	300	300	150	1,355.7	217.4	113.4	326.6
1989. . . .	1,700	300	300	140	1,326.8	204.9	111.0	309.7

**CASH RECEIPTS FROM FARM MARKETINGS BY COMMODITIES, NEVADA, 1987-89**

ITEM	1987		1988		1989	
	000 \$	% of Total	000 \$	% of Total	000 \$	% of Total
Cattle & Calves . . . . .	134,042	55.7	119,298	50.1	97,350	41.4
Dairy Products . . . . .	32,250	13.4	33,033	13.9	36,810	15.7
Sheep & Lambs (Including Wool) . . . . .	5,260	2.2	4,242	1.8	4,014	1.7
All Other Livestock & Products . . . . .	2,999	1.2	2,553	1.1	2,879	1.2
<b>Total Livestock &amp; Products</b>	<b>174,551</b>	<b>72.5</b>	<b>159,126</b>	<b>66.9</b>	<b>141,053</b>	<b>60.0</b>
All Hay . . . . .	38,232	15.9	48,329	20.3	54,041	23.0
Alfalfa Seed . . . . .	7,264	3.0	8,825	3.7	11,275	4.8
Potatoes . . . . .	10,725	4.4	8,254	3.5	13,277	5.6
Food & Feed Grains . . . . .	5,010	2.1	6,071	2.5	5,814	2.5
Vegetables . . . . .	4,701	2.0	7,153	3.0	9,329	4.0
All Other Crops . . . . .	216	.1	240	.1	319	.1
<b>Total Crops</b>	<b>66,148</b>	<b>27.5</b>	<b>78,872</b>	<b>33.1</b>	<b>94,055</b>	<b>40.0</b>
<b>Total All Commodities</b>	<b>240,699</b>	<b>100.0</b>	<b>237,998</b>	<b>100.0</b>	<b>235,108</b>	<b>100.0</b>

**CASH RECEIPTS FROM FARM MARKETING OF COMMODITIES**

**1989**



**GROSS AND NET INCOME FROM FARMING: NEVADA 1985-1989 1/**

ITEM	1985	1986	1987	1988	1989
	<i>Million Dollars</i>				
Gross Farm Income 2/ . . . . .	239.8	225.5	252.4	261.1	299.2
Cash Income . . . . .	227.4	216.4	247.4	247.1	244.5
Farm Marketings . . . . .	220.6	210.5	240.7	238.0	235.1
Crops . . . . .	79.7	68.3	66.1	78.9	94.1
Livestock & Products . . . . .	140.9	142.2	174.6	159.1	141.1
Government Payments . . . . .	3.9	3.5	3.9	6.3	6.3
Other Farm Income 3/ . . . . .	3.0	2.4	2.8	2.7	3.1
Noncash Income . . . . .	20.0	19.9	20.3	20.4	17.7
Value of Home Consumption . . . . .	3.0	3.1	3.5	3.9	4.2
Rental Value of Dwellings . . . . .	17.0	16.8	16.8	16.5	13.5
Value of Inventory Adjustment . . . . .	-7.6	-10.8	-15.2	-6.4	37.0
Total Production Expenses 2/ . . . . .	224.1	209.8	209.4	212.3	232.9
Intermediate Product Expenses . . . . .	114.8	107.8	108.7	114.3	130.4
Farm Origin . . . . .	43.4	40.8	36.9	39.9	50.9
Feed Purchased . . . . .	30.4	33.3	30.0	32.9	38.5
Livestock & Poultry Purchased . . . . .	10.5	5.2	5.0	5.0	10.2
Seed Purchased . . . . .	2.6	2.2	1.9	1.9	2.2
Manufactured Inputs . . . . .	30.3	27.7	28.7	29.1	31.3
Fertilizer & Lime . . . . .	5.7	5.3	5.2	5.5	6.1
Pesticides . . . . .	3.3	3.4	3.7	3.6	4.6
Fuel & Oil . . . . .	14.3	12.2	11.8	11.7	12.6
Electricity . . . . .	7.1	6.8	8.1	8.4	7.9
Other . . . . .	41.1	39.3	43.1	45.3	48.3
Repair & Maintenance . . . . .	11.3	11.2	12.1	11.7	12.8
Other Miscellaneous 4/ . . . . .	29.8	28.1	31.1	33.6	35.5
Interest . . . . .	39.6	36.4	34.8	31.4	31.1
Real Estate . . . . .	27.4	25.4	24.8	22.0	21.3
Nonreal Estate . . . . .	12.1	11.0	10.0	9.5	9.9
Contract & Hired Labor Expenses 5/ . . . . .	22.1	22.2	24.3	25.1	26.6
Net Rent to Nonoperator Landlords . . . . .	4.1	3.0	3.3	4.4	6.3
Capital Consumption . . . . .	40.0	36.9	33.5	33.3	33.9
Property Taxes . . . . .	3.5	3.5	4.8	3.7	4.5
<b>NET FARM INCOME</b>	<b>15.7</b>	<b>15.6</b>	<b>43.1</b>	<b>48.8</b>	<b>66.3</b>

Source: Economic Indicators of the Farm Sector, State Financial Summary, USDA-ERS.

1/ Details may not add to total because of rounding.

2/ Includes operator dwellings.

3/ Includes forest product sales, recreational income, and other farm business related income.

4/ Includes machine hire and custom work expenses; marketing, storage and transportation expenses; and miscellaneous expenses.

5/ Includes contract labor expenses, hired labor wages and social security payments.



**CASH RECEIPTS FROM SALE OF PRINCIPLE PRODUCTS AND GOVERNMENT PAYMENTS**

COUNTY AND DISTRICT	LIVESTOCK AND LIVESTOCK PRODUCTS	CROPS	TOTAL RECEIPTS FROM MARKETING	GOVERNMENT PAYMENTS	ALL CASH RECEIPTS
- - - <i>Thousand Dollars</i> - - -					
<u>1987 1/</u>					
Churchill . . . . .	26,977	6,415	33,392	378	33,770
Douglas . . . . .	9,360	1,019	10,379	38	10,417
Humboldt . . . . .	13,283	20,376	33,659	1,057	34,716
Lyon . . . . .	15,512	14,829	30,341	304	30,645
Carson City . . . . .	501	20	521	47	568
Pershing . . . . .	17,335	10,909	28,244	335	28,579
Storey 2/ . . . . .	---	---	---	---	---
Washoe . . . . .	6,950	2,382	9,332	513	9,845
District 1	89,918	55,950	145,868	2,672	148,540
Elko . . . . .	39,829	1,626	41,455	474	41,929
Eureka . . . . .	4,676	3,623	8,299	191	8,490
Lander . . . . .	6,942	1,031	7,973	166	8,139
White Pine . . . . .	7,989	1,132	9,121	255	9,376
District 3	59,436	7,412	66,848	1,086	67,934
Clark . . . . .	14,925	847	15,772	49	15,821
Esmeralda . . . . .	2,487	1,934	4,421	13	4,434
Lincoln . . . . .	4,288	904	5,192	30	5,222
Mineral . . . . .	1,307	146	1,453	8	1,461
Nye . . . . .	4,182	1,396	5,578	29	5,607
District 8	27,189	5,227	32,416	129	32,545
State	176,543	68,589	245,132	3,887	249,019

- - - <i>Thousand Dollars</i> - - -					
<u>1988 1/</u>					
Churchill . . . . .	26,123	7,918	34,041	242	34,283
Douglas . . . . .	8,920	1,214	10,134	34	10,168
Humboldt . . . . .	12,242	18,591	30,833	1,949	32,782
Lyon . . . . .	14,179	19,350	33,529	557	34,086
Carson City . . . . .	470	24	494	42	536
Pershing . . . . .	15,156	13,348	28,504	342	28,846
Storey 2/ . . . . .	---	---	---	---	---
Washoe . . . . .	6,563	2,856	9,419	162	9,581
District 1	83,653	63,301	146,954	3,328	150,282
Elko . . . . .	36,627	2,000	38,627	2,032	40,659
Eureka . . . . .	4,116	4,331	8,447	301	8,748
Lander . . . . .	6,438	1,289	7,727	272	7,999
White Pine . . . . .	7,457	1,386	8,843	284	9,127
District 3	54,638	9,006	63,644	2,889	66,533
Clark . . . . .	14,589	1,184	15,773	39	15,812
Esmeralda . . . . .	2,099	2,366	4,465	18	4,483
Lincoln . . . . .	3,848	1,050	4,898	41	4,939
Mineral . . . . .	1,051	174	1,225	2	1,227
Nye . . . . .	3,817	1,717	5,534	32	5,566
District 8	25,404	6,491	31,895	132	32,027
State	163,695	78,798	242,493	6,349	248,842

1/ Includes estimates of inter-farm and intra-state sales resulting in larger total cash receipts than shown in USDA estimate on previous pages. 2/ Not included.

Source: Bureau of Economic Analysis, U.S. Department of Commerce, Washington, D.C.

**PRICES RECEIVED FOR SPECIFIED PRODUCTS: BY MONTHS, NEVADA, 1986-89**

YEAR	JAN	FEB	MAR	APR	MAY	JUN	JUL	AUG	SEP	OCT	NOV	DEC
<b>Beef Cattle</b>												
<i>(Dollars Per Cwt.)</i>												
1986	44.00	46.00	44.30	41.30	40.40	39.70	41.90	43.10	47.00	48.60	46.00	48.80
1987	48.40	52.80	53.40	53.80	53.20	55.30	55.60	57.20	60.10	54.60	56.10	58.40
1988	61.30	62.80	61.80	63.60	64.00	64.70	65.40	65.50	64.40	56.40	56.00	56.00
1989	61.70	63.40	64.30	64.40	63.60	62.60	62.80	63.10	63.20	65.80	65.80	63.90
<b>Steers and Heifers</b>												
1986	51.60	51.20	50.30	48.00	45.40	42.00	47.80	47.80	54.00	55.30	52.70	55.60
1987	54.20	60.20	60.60	60.20	60.20	62.80	63.30	66.10	68.30	61.90	63.80	66.50
1988	69.60	71.30	69.40	72.00	73.40	74.10	74.70	74.40	73.90	62.50	62.30	62.10
1989	68.10	69.90	71.00	71.00	69.90	68.50	68.40	68.70	68.90	72.80	72.90	70.50
<b>Cows</b>												
1986	29.80	36.40	33.10	28.80	31.10	35.30	31.00	34.40	34.10	36.20	33.40	36.10
1987	37.60	39.10	40.10	41.80	40.30	41.30	41.40	40.60	44.90	40.90	41.90	43.30
1988	41.80	43.10	43.90	44.00	42.10	42.90	43.70	44.80	42.20	42.10	41.10	41.60
1989	42.30	43.90	44.20	44.50	44.70	44.70	45.80	46.20	45.80	44.90	44.60	44.00
<b>Calves</b>												
1986	49.40	60.60	57.90	59.70	50.90	51.10	50.20	51.00	62.30	63.50	58.20	66.50
1987	67.30	72.90	72.80	75.50	71.50	75.10	74.90	74.60	75.80	75.60	78.90	79.40
1988	83.30	84.60	85.80	85.50	85.90	85.50	83.50	84.10	80.70	87.50	87.50	84.80
1989	85.00	87.50	88.10	87.00	85.20	81.60	80.90	85.70	87.00	87.90	88.30	85.00
<b>Sheep</b>												
1986	22.50	16.80	18.10	19.10	16.40	21.30	20.80	22.70	27.10	26.00	26.10	22.30
1987	21.70	27.50	27.60	22.10	25.00	29.90	21.50	27.70	23.90	23.90	30.20	26.20
1988	25.10	28.40	26.40	20.60	20.00	20.70	21.50	23.70	18.60	18.90	19.00	16.50
1989	26.10	29.40	26.20	23.50	23.10	22.90	22.30	21.50	21.10	20.50	19.20	16.50
<b>Lambs</b>												
1986	55.30	47.10	53.20	48.70	67.10	66.40	64.40	59.00	57.00	53.10	64.20	68.60
1987	63.00	66.30	71.00	66.40	77.10	81.30	78.30	73.80	65.50	65.10	60.60	57.80
1988	60.90	67.00	58.90	70.30	76.10	59.30	60.70	54.00	54.20	53.00	51.30	50.10
1989	61.20	62.70	63.40	63.90	64.60	62.50	59.30	56.50	55.70	55.20	54.80	55.70
<b>Alfalfa Hay</b>												
<i>(Dollars Per Ton)</i>												
1986	90.00	90.00	90.00	90.00	80.00	80.00	82.00	82.00	78.00	78.00	80.00	81.00
1987	83.00	81.00	78.00	74.00	74.00	82.00	82.00	82.00	82.00	85.00	87.00	85.00
1988	85.00	85.00	85.00	85.00	95.00	95.00	100.00	100.00	100.00	100.00	100.00	100.00
1989	102.00	105.00	110.00	110.00	110.00	110.00	95.00	92.00	95.00	98.00	108.00	108.00
<b>Other Hay</b>												
1986	70.00	70.00	70.00	70.00	60.00	60.00	62.00	62.00	58.00	58.00	58.00	60.00
1987	65.00	60.00	55.00	53.00	53.00	60.00	60.00	60.00	60.00	63.00	65.00	63.00
1988	65.00	65.00	65.00	65.00	75.00	75.00	80.00	80.00	80.00	80.00	80.00	80.00
1989	82.00	85.00	87.00	87.00	87.00	87.00	80.00	75.00	75.00	75.00	80.00	80.00
<b>All Hay</b>												
1986	84.00	84.00	84.00	84.00	74.00	74.00	76.00	76.00	72.00	72.00	73.00	75.00
1987	78.00	75.00	71.00	68.00	68.00	75.00	75.00	75.00	75.00	78.00	80.00	78.00
1988	79.00	79.00	79.00	79.00	89.00	89.00	94.00	94.00	94.00	94.00	94.00	94.00
1989	96.00	99.00	103.00	103.00	103.00	103.00	91.00	87.00	89.00	91.00	100.00	100.00

# 1989 CROP/WEATHER SUMMARY

## JANUARY

All areas were much colder than normal. Significant snowfall was recorded all areas except the extreme south. Widely scattered snowshowers and low night temperatures were hard on newborn calves and lambs. Livestock feeding operations were hampered by persistent low temperatures and snow flurries. Chopping ice for livestock was common all areas except the extreme south.

## FEBRUARY

February started with mostly clear, sunny skies but a Siberian air mass dropped temperatures dramatically. This was followed by bitter, cold air originating near the Arctic Circle which plunged temperatures. Marketing potatoes was delayed by below zero temperatures. Chopping ice for livestock was required all areas. A much warmer air flow after midmonth melted snowcover in some winter grain fields resulting in some premature growth. Month ended with above normal temperatures that were easier on newborn calves, lambs.

## MARCH

Mild airflows extended into March bringing spring-like weather early but only light scattered precipitation. Series of Pacific storms end of month brought only light precipitation. Average temperatures were above normal all areas. Scattered showers, gusty winds delayed fieldwork midmonth. Winter grains started to show growth most areas.

## APRIL

April started with above normal temperatures and scattered, light precipitation. Dry, unseasonably warm weather continued until the end of the third week when cold, wintry weather occurred. April ended with relatively cool, wet weather in all areas except the extreme south. Planting of spring grains ahead of normal. Calving and lambing about 80% complete.

## MAY

May started with slightly below normal temperatures but changed quickly to dry and very warm most areas to hot in the extreme south which extended to midmonth. Dry, unseasonably warm weather continued until the end of May when freezing temperatures hit most areas. Planting completed for all small grains. Movement of cattle and sheep to summer ranges ahead of normal.

## JUNE

June started with below normal temperatures and some freezing weather. Widely scattered showers and thunder storms fell in the northern and central areas. This was followed by additional wet weather over most of the northern and central sections until midmonth when a high pressure ridge ended the wet weather with cooler temperatures and gusty winds. Remainder of June was characterized by warm temperatures which averaged about normal in most sections. Thunderstorms made haying difficult. About 70% of the spring wheat, oats and barley was headed by month's end.

## JULY

July began with near normal temperatures and scattered precipitation. Weather was mostly hot and dry mid-month with record high daytime temperatures at many stations. Gusty afternoon winds were common most areas. Temperatures the remainder of July were above normal and precipitation was below normal. Second cuttings of alfalfa hay about 70% complete. Over 75% of the winter wheat and barley, 60% of the spring wheat and 50% of the oats were harvested.

## AUGUST

August started cool, followed by widespread significant rainfall in all areas. Weather was mostly warm and dry midmonth. Isolated thunderstorm activity followed but no widespread rain was recorded. After a brief warming trend, cool weather swept in again near the end of August. About 35% of the third cuttings of alfalfa completed. Nearly all of the wild hay cut.

## SEPTEMBER

September started like August; ended with temperatures near normal and gusty winds but little precipitation. Dry conditions were prevalent until midmonth when light showers were recorded across the northern areas. Temperatures were slightly below normal due to rainfall and cloudiness. A warming trend occurred near the end of September. Over 80% of the alfalfa seed crop harvested. Digging potato crop started early and about 50% of the crop dug by month's end.

## OCTOBER

October started with light showers in the north and temperatures were slightly below normal in the west and north. A high pressure system midmonth brought mostly sunny skies and above normal temperatures in most areas. Indian Summer type weather prevailed until the end of October. Potato and onion harvests completed earlier than usual. All of the garlic, winter wheat planted by month's end.

## NOVEMBER

November started cool and dry except for trace precipitation northeast. Temperatures varied from mild early to near record high levels the end of the month. No precipitation occurred anywhere and mostly dry weather prevailed. Storms late in period brought temperatures back to normal but produced gusty winds. Open weather facilitated livestock feeding operations.

## DECEMBER

Snow was widespread and temperatures fell below normal. Freezing temperatures were reported at all stations. A high pressure system dominated the weather pattern most of December. Rain was received at lower elevations and snow well above valley floors. Low nighttime temperatures increased livestock feeding requirements.

CLIMATOLOGICAL DATA, SELECTED STATIONS, 1988-89

STATION	ELEVATION - Feet -	ANNUAL PRECIPITATION			FROST FREE 2/	
		1988	1989	NORMAL 1/	1988	1989
		- Inches -			- Days -	
<b>NORTHWEST</b>						
Carson City. . . . .	4651	4.85	9.07	10.79	97	132
Fallon . . . . .	3965	5.83	4.82	4.88	104	126
Reno . . . . .	4404	5.30	7.34	7.49	146	128
Yerington. . . . .	4375	3.00+	5.47	5.52	103	180
Lovelock . . . . .	3975	6.76	4.36	5.48	128	126
McDermitt. . . . .	4527	6.52	6.04	--	53	70
Winnemucca . . . . .	4297	6.73	5.56	7.87	94	103
<b>NORTHEAST</b>						
Austin . . . . .	6605	16.53	10.56	12.76	95	127
Battle Mountain. . . . .	4539	6.88	4.68+	7.49	N/A	106
Elko . . . . .	5075	6.72	7.88	9.30	73	80
Ely. . . . .	6262	8.66	6.60	9.02	95	70
Mountain City. . . . .	5641	10.40	9.74	13.07 3/	7	2
<b>SOUTH CENTRAL</b>						
Hawthorne. . . . .	4215	3.82	3.31	4.58 4/	187	184
Tonopah. . . . .	5426	5.67	3.00+	4.88	162	N/A
Caliente . . . . .	4402	6.22	5.20	9.05	185	172
<b>EXTREME SOUTH</b>						
Las Vegas. . . . .	2162	2.29	2.11	4.19	288	286
Desert Rock. . . . .	3301	5.84	1.25	--	231	235
Pahrump. . . . .	2670	4.03+	2.11	--	225	219
Logandale. . . . .	1410	4.13+	3.23	--	N/A	270

+ Some monthly data missing.

- Data not available.

1/ Normal for period 1951-1980.

2/ Days between last frost in spring to first frost in fall.

3/ Normal for period 1955-1975.

4/ Normal for period 1941-1970.



NEVADA 1989 ANNUAL CROP SUMMARY

CROP	YEAR	ACREAGE		PRODUCTION			SEASON	VALUE OF PRODUCTION
		PLANTED	HARVESTED	UNIT	YIELD		AVERAGE	
					/ACRE	TOTAL	PRICE	
		-- 000's --			000's	\$	000 \$'s	
Winter	1987	8	7	Bu.	90.0	630	2.25	1,418
Wheat	1988	8	7	"	80.0	560	3.45	1,932
	1989	7	6	"	80.0	480	3.50	1,680
Spring	1987	16	14	"	75.0	1,050	2.30	2,415
Wheat	1988	14	12	"	65.0	780	3.75	2,925
	1989	11	9	"	80.0	720	3.85	2,772
All	1987	24	21	"	80.0	1,680	2.28	3,833
Wheat	1988	22	19	"	70.5	1,340	3.62	4,857
	1989	18	15	"	80.0	1,200	3.71	4,452
Barley	1987	16	14	"	90.0	1,260	2.00	2,520
	1988	14	12	"	80.0	960	2.65	2,544
	1989	12	11	"	90.0	990	2.40	2,376
Alfalfa	1987	--	245	Tons	4.20	1,029	--	--
Hay	1988	--	250	"	4.20	1,050	--	--
	1989	--	245	"	4.40	1,078	--	--
All	1987	--	270	"	1.30	351	--	--
Other	1988	--	260	"	1.10	286	--	--
Hay	1989	--	275	"	1.40	385	--	--
All	1987	--	515	"	2.68	1,380	77.00	106,260
Hay	1988	--	510	"	2.62	1,336	95.50	127,588
	1989	--	520	"	2.81	1,463	96.50	141,180
Alfalfa	1987	--	10	Lbs.	630	6,300	1.15	7,245
Seed	1988	--	11	"	640	7,040	1.25	8,800
	1989	--	14	"	710	9,940	1.20	11,928
Potatoes	1987	8	8	Cwt.	340	2,720	3.10	8,432
	1988	8	8	"	310	2,480	5.55	13,764
	1989	8	8	"	325	2,600	7.15	18,590
		- Actual Acres -			- Actual Tons -			
Garlic	1987	--	660	Tons	7.0	4,600	360.00	1,656
	1988	--	1,200	"	5.0	6,000	320.00	1,920
	1989	--	1,200	"	6.0	7,200	370.00	2,664
Onions	1987	--	460	"	25.0	11,500	200.00	2,300
	1988	--	630	"	25.0	15,750	280.00	4,410
	1989	--	600	"	35.0	21,000	280.00	5,880
All	1987	--	--	--	--	--	--	132,246
Main	1988	--	--	--	--	--	--	163,883
Crops	1989	--	--	--	--	--	--	186,398



**WINTER WHEAT: ACREAGE, YIELD, PRODUCTION, PRICE AND VALUE, NEVADA, 1980-89**

YEAR	ACRES	ACRES	YIELD	PRODUCTION	SEASON PRICE	VALUE OF
	PLANTED	HARVESTED	PER ACRE		AVERAGE	PRODUCTION
			<i>Bushels</i>	<i>000 Bu.</i>	<i>\$'s Per Bu.</i>	<i>000 \$'s</i>
1980 . . .	13,000	12,000	65	780	3.80	2,964
1981 . . .	16,000	15,000	70	1,050	3.40	3,570
1982 . . .	16,000	15,000	70	1,050	3.53	3,707
1983 . . .	9,000	8,000	70	560	3.40	1,904
1984 . . .	9,000	8,000	80	640	2.90	1,856
1985 . . .	10,000	9,000	80	720	2.55	1,836
1986 . . .	10,000	9,000	90	810	2.05	1,661
1987 . . .	8,000	7,000	90	630	2.25	1,418
1988 . . .	8,000	7,000	80	560	3.45	1,932
1989 . . .	7,000	6,000	80	480	3.50	1,680

**WINTER WHEAT: ACREAGE, YIELD AND PRODUCTION, BY COUNTIES, NEVADA, 1988-89**

COUNTY	1988				1989			
	PLANTED	HARVESTED	YIELD	PRODUCTION	PLANTED	HARVESTED	YIELD	PRODUCTION
	<i>Acres</i>		<i>Bushels</i>		<i>Acres</i>		<i>Bushels</i>	
Churchill . . .	700	600	70	42,000	800	700	80	56,000
Eureka . . .	400	300	70	21,000	300	200	75	15,000
Humboldt . . .	2,400	2,100	85	178,500	2,000	1,800	80	144,000
Lyon . . .	700	500	70	35,000	600	400	80	32,000
Pershing . . .	2,200	2,000	90	180,000	2,000	1,800	85	153,000
All Others . . .	1,600	1,500	69	103,500	1,300	1,100	73	80,000
State	8,000	7,000	80	560,000	7,000	6,000	80	480,000

**SPRING WHEAT: ACREAGE, YIELD, PRODUCTION, PRICE AND VALUE, NEVADA, 1980-89**

YEAR	ACRES	ACRES	YIELD	PRODUCTION	SEASON PRICE	VALUE OF
	PLANTED	HARVESTED	PER ACRE		AVERAGE	PRODUCTION
			<i>Bushels</i>	<i>000 Bu.</i>	<i>\$'s Per Bu.</i>	<i>000 \$'s</i>
1980 . . .	19,000	17,000	60	1,020	3.80	3,876
1981 . . .	18,000	16,000	50	800	3.40	2,720
1982 . . .	16,000	14,000	60	840	3.53	2,965
1983 . . .	12,000	10,000	70	700	3.65	2,555
1984 . . .	18,000	16,000	75	1,200	3.05	3,660
1985 . . .	17,000	15,000	70	1,050	2.91	3,056
1986 . . .	15,000	13,000	70	910	2.20	2,002
1987 . . .	16,000	14,000	75	1,050	2.30	2,415
1988 . . .	14,000	12,000	65	780	3.75	2,925
1989 . . .	11,000	9,000	80	720	3.85	2,772

**SPRING WHEAT: ACREAGE, YIELD AND PRODUCTION, BY COUNTIES, NEVADA, 1988-89**

COUNTY	1988				1989			
	PLANTED	HARVESTED	YIELD	PRODUCTION	PLANTED	HARVESTED	YIELD	PRODUCTION
	<i>Acres</i>		<i>Bushels</i>		<i>Acres</i>		<i>Bushels</i>	
Churchill . . .	1,400	1,100	70	77,000	1,200	900	75	67,500
Eureka . . .	800	600	60	36,000	500	400	75	30,000
Humboldt . . .	5,500	4,700	65	305,500	4,000	3,100	80	248,000
Lander . . .	700	600	65	39,000	700	600	85	51,000
Lyon . . .	900	700	65	45,500	700	600	75	45,000
Pershing . . .	3,800	3,400	65	221,000	3,100	2,600	85	221,000
All Others . . .	900	900	62	56,000	800	800	72	57,500
State	14,000	12,000	65	780,000	11,000	9,000	80	720,000

**BARLEY: ACREAGE, YIELD, PRODUCTION, PRICE AND VALUE, NEVADA, 1980-89**

YEAR	ACRES		YIELD	PRODUCTION	SEASON	VALUE
	PLANTED	HARVESTED	PER		AVERAGE	OF
			ACRE		PRICE	PRODUCTION
			<i>Bushels</i>	<i>000 Bushels</i>	<i>\$ Per Bushel</i>	<i>000 \$</i>
1980	31,000	28,000	70	1,960	3.15	6,174
1981	33,000	30,000	55	1,650	2.79	4,604
1982	35,000	32,000	80	2,560	2.43	6,221
1983	31,000	28,000	80	2,240	2.90	6,496
1984	27,000	24,000	90	2,160	2.55	5,808
1985	23,000	20,000	80	1,600	2.15	3,440
1986	18,000	16,000	90	1,440	1.85	2,664
1987	16,000	14,000	90	1,260	2.00	2,520
1988	14,000	12,000	80	960	2.65	2,544
1989	12,000	11,000	90	990	2.40	2,376

**BARLEY: ACREAGE, YIELD AND PRODUCTION, BY COUNTIES, NEVADA, 1988-89**

COUNTY	1988				1989			
	PLANTED	HARVESTED	YIELD	PRODUCTION	PLANTED	HARVESTED	YIELD	PRODUCTION
	<i>Acres</i>		<i>Bushels</i>		<i>Acres</i>		<i>Bushels</i>	
Churchill	1,400	900	95	85,500	1,000	800	85	68,000
Eureka	500	400	70	28,000	400	400	80	32,000
Humboldt	8,400	7,600	80	608,000	7,300	6,800	95	646,000
Lander	400	300	75	22,500	400	400	80	32,000
Lyon	500	400	75	30,000	400	300	80	24,000
Pershing	700	600	95	57,000	500	400	85	34,000
Washoe	200	200	75	15,000	200	200	80	16,000
White Pine	300	200	80	16,000	300	300	80	24,000
All Others	1,600	1,400	70	98,000	1,500	1,400	81.4	114,000
STATE	14,000	12,000	80	960,000	12,000	11,000	90	990,000

**HAY: ACREAGE, YIELD, PRODUCTION, PRICE AND VALUE, NEVADA, 1980-89**

YEAR	ALL HAY					ALFALFA HAY 1/		
	ACRES	YIELD	PRODUCTION	SEASON	VALUE	ACRES	YIELD	PRODUCTION
	HARVESTED	PER		AVERAGE	OF		HARVESTED	
	<i>000</i>	<i>Tons</i>	<i>000 Tons</i>	<i>\$</i>	<i>000 \$</i>	<i>000</i>	<i>Tons</i>	<i>000 Tons</i>
1980	500	2.19	1,095	90.50	99,098	215	3.50	753
1981	470	2.30	1,081	70.00	73,220	220	3.55	781
1982	510	2.45	1,249	86.50	108,039	225	3.65	821
1983	530	2.46	1,302	91.00	118,482	230	3.90	897
1984	525	2.56	1,346	75.00	100,950	235	4.00	940
1985	495	2.63	1,302	80.50	104,811	235	4.10	964
1986	520	2.65	1,376	74.00	101,824	240	4.10	984
1987	515	2.68	1,380	77.00	106,260	245	4.20	1,029
1988	510	2.62	1,336	95.50	127,588	250	4.20	1,050
1989	520	2.81	1,463	96.50	141,180	245	4.40	1,078

1/ Alfalfa hay season average price and value of production are not available.

**HAY: ACREAGE HARVESTED, YIELD AND PRODUCTION, BY TYPES,  
BY COUNTIES, NEVADA, 1988**

COUNTY	ALFALFA HAY			ALL OTHER HAY			ALL HAY
	ACRES	YIELD	PRODUCTION	ACRES	YIELD	PRODUCTION	PRODUCTION
		Tons	Tons		Tons	Tons	Tons
Churchill. . . . .	36,000	4.60	165,000	6,000	1.90	11,400	177,000
Douglas. . . . .	8,900	3.90	34,710	7,000	1.40	8,900	44,510
Humboldt . . . . .	36,000	4.20	151,200	39,000	1.20	46,800	198,000
Lyon . . . . .	39,000	4.20	163,800	7,000	.90	6,300	170,100
Carson City. . . . .	300	3.90	1,170	200	1.20	240	1,410
Pershing . . . . .	21,000	4.40	92,400	3,100	1.20	3,720	96,120
Storey . . . . .	100	4.15	410	200	1.05	210	620
Washoe . . . . .	13,000	4.50	58,500	7,000	1.80	12,600	71,100
District 1	154,300	4.33	667,790	69,500	1.31	91,070	758,860
Elko . . . . .	28,000	3.50	98,000	150,000	1.00	150,000	248,000
Eureka . . . . .	20,000	4.55	91,000	9,000	1.10	9,900	100,900
Lander . . . . .	10,000	4.10	41,000	16,000	1.00	16,000	57,000
White Pine . . . . .	10,000	3.40	34,000	7,000	1.20	8,400	42,400
District 3	68,000	3.88	264,000	182,000	1.01	184,300	448,300
Clark. . . . .	5,000	5.70	28,500	1,200	2.00	2,400	30,900
Esmeralda. . . . .	6,700	4.15	27,810	400	1.20	480	28,290
Lincoln. . . . .	6,000	4.00	24,000	1,700	.90	1,530	25,530
Mineral. . . . .	2,000	3.75	7,500	200	1.10	220	7,720
Nye. . . . .	8,000	3.80	30,400	5,000	1.20	6,000	36,400
District 8	27,700	4.27	118,210	8,500	1.25	10,630	128,840
State	250,000	4.20	1,050,000	260,000	1.10	286,000	1,336,000

**HAY: ACREAGE HARVESTED, YIELD AND PRODUCTION, BY TYPES,  
BY COUNTIES, NEVADA, 1989**

COUNTY	ALFALFA HAY			ALL OTHER HAY			ALL HAY
	ACRES	YIELD	PRODUCTION	ACRES	YIELD	PRODUCTION	PRODUCTION
		Tons	Tons		Tons	Tons	Tons
Churchill. . . . .	34,000	4.90	166,600	6,000	2.10	12,600	179,200
Douglas. . . . .	8,900	3.90	34,710	7,000	1.90	13,300	48,010
Humboldt . . . . .	34,000	5.00	170,000	42,000	1.50	63,000	233,000
Lyon . . . . .	38,000	4.40	167,200	7,000	1.40	9,800	177,000
Carson City. . . . .	300	4.30	1,290	200	1.30	260	1,550
Pershing . . . . .	21,000	4.50	94,500	3,200	1.55	4,960	99,460
Storey . . . . .	100	5.00	500	200	1.10	220	720
Washoe . . . . .	13,000	4.60	59,800	7,000	2.00	14,000	73,800
District 1	149,300	4.65	694,600	72,600	1.63	118,140	812,740
Elko . . . . .	28,000	3.40	95,200	158,000	1.30	205,400	300,600
Eureka . . . . .	20,000	4.20	84,000	10,000	1.30	13,000	97,000
Lander . . . . .	10,000	3.70	37,000	17,000	1.25	21,250	58,250
White Pine . . . . .	10,000	4.00	40,000	7,800	1.25	9,750	49,750
District 3	68,000	3.77	256,200	192,800	1.29	249,400	505,600
Clark. . . . .	5,000	6.00	30,000	1,200	2.70	3,240	33,240
Esmeralda. . . . .	6,700	4.00	26,800	400	1.30	520	27,320
Lincoln. . . . .	6,000	4.20	25,200	1,800	1.80	3,240	28,440
Mineral. . . . .	2,000	3.60	7,200	200	1.30	260	7,460
Nye. . . . .	8,000	4.75	38,000	6,000	1.70	10,200	48,200
District 8	27,700	4.59	127,200	9,600	1.82	17,460	144,660
State	245,000	4.40	1,078,000	275,000	1.40	385,000	1,463,000

POTATOES: ACREAGE, YIELD, PRODUCTION, PRICE AND VALUE, NEVADA, 1979-89

YEAR	ACRES PLANTED	ACRES HARVESTED	YIELD PER ACRE <i>Cwt.</i>	PRODUCTION <i>000 Cwt.</i>	SEASON AVERAGE PRICE <i>\$'s Per Cwt.</i>	VALUE OF PRODUCTION <i>000 \$'s</i>
1979 . . .	15,000	15,000	330	4,950	2.75	13,613
1980 . . .	13,000	13,000	340	4,420	5.20	22,984
1981 . . .	12,000	12,000	290	3,480	4.90	17,052
1982 . . .	13,000	13,000	315	4,095	2.60	10,647
1983 . . .	12,000	12,000	310	3,720	5.70	21,204
1984 . . .	10,000	10,000	330	3,300	4.60	15,180
1985 . . .	9,000	9,000	345	3,105	2.80	8,694
1986 . . .	9,000	9,000	350	3,150	4.15	13,073
1987 . . .	8,000	8,000	340	2,720	3.10	8,432
1988 . . .	8,000	8,000	310	2,480	5.55	13,764
1989 . . .	8,000	8,000	325	2,600	7.15	18,590

ONIONS: ACREAGE, YIELD, PRODUCTION, PRICE AND VALUE, NEVADA, 1982-89

YEAR	ACRES PLANTED	ACRES HARVESTED	YIELD PER ACRE <i>Tons</i>	PRODUCTION <i>Tons</i>	SEASON AVERAGE PRICE <i>\$'s Per Ton</i>	VALUE OF PRODUCTION <i>000 \$'s</i>
1982 . . .		600	23	13,800	200.00	2,760
1983 . . .		500	21	10,500	210.00	2,205
1984 . . .		400	23	9,200	280.00	2,576
1985 . . .		600	21	12,600	200.00	2,520
1986 . . .		400	21	8,400	260.00	2,184
1987 . . .		460	25	11,500	200.00	2,300
1988 . . .		630	25	15,750	280.00	4,410
1989 . . .		600	35	21,000	280.00	5,880

1/ Not available.

GARLIC: ACREAGE, YIELD, PRODUCTION, PRICE AND VALUE, NEVADA, 1982-89

YEAR	ACRES PLANTED	ACRES HARVESTED	YIELD PER ACRE <i>Tons</i>	PRODUCTION <i>Tons</i>	SEASON AVERAGE PRICE <i>\$'s Per Ton</i>	VALUE OF PRODUCTION <i>000 \$'s</i>
1982 . . .		600	5.5	3,200	360.00	1,152
1983 . . .		800	6.0	4,800	440.00	2,112
1984 . . .		800	6.0	4,800	440.00	2,112
1985 . . .		900	6.0	5,400	400.00	2,160
1986 . . .		800	6.5	5,200	380.00	1,976
1987 . . .		660	7.0	4,600	360.00	1,656
1988 . . .		1,200	5.0	6,000	320.00	1,920
1989 . . .		1,200	6.0	7,200	370.00	2,664

1/ Not available.

ALFALFA SEED: ACREAGE, YIELD, PRODUCTION, PRICE AND VALUE, NEVADA, 1979-89

	ACRES 1/	ACRES	YIELD PER		SEASON AVERAGE	VALUE OF
	PLANTED	HARVESTED	ACRE	PRODUCTION	PRICE	PRODUCTION
			Lbs.	000 Lbs.	\$'s Per Lbs.	000 \$'s
1979. . .		18,000	405	7,290	1.30	9,477
1980. . .		17,000	450	7,650	1.20	9,180
1981. . .		17,000	530	9,010	1.15	10,362
1982. . .		13,000	350	4,550	1.05	4,778
1983. . .		10,000	405	4,050	1.15	4,658
1984. . .		10,000	525	5,250	1.10	5,775
1985. . .		11,000	670	7,370	1.00	7,370
1986. . .		10,000	600	6,000	1.00	6,000
1987. . .		10,000	630	6,300	1.15	7,245
1988. . .		11,000	640	7,040	1.25	8,800
1989. . .		14,000	710	9,940	1.20	11,928

1/ Not available.



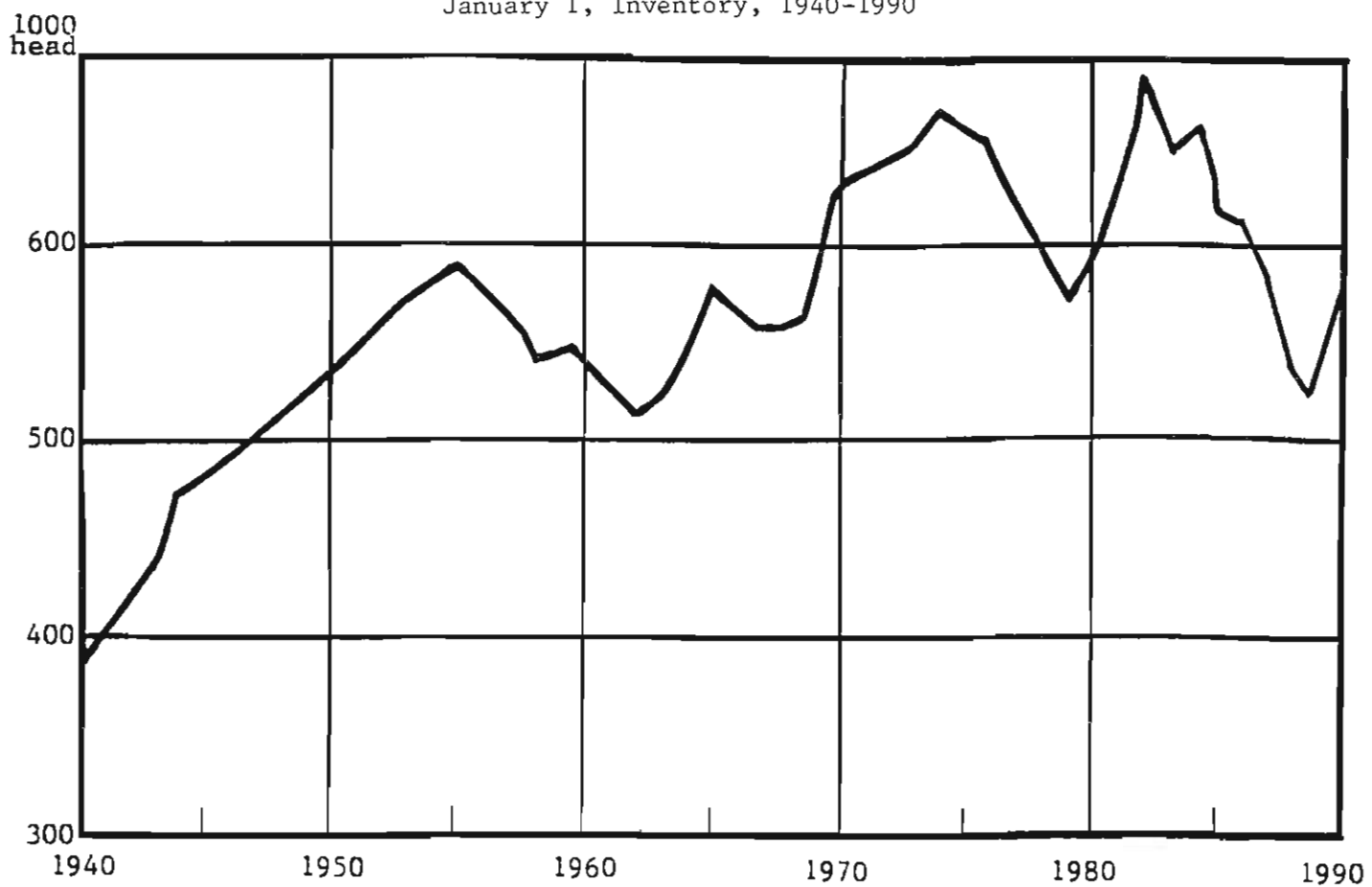
ALFALFA SEED: ACREAGE, YIELD, PRODUCTION, BY COUNTIES, NEVADA, 1983-89

YEAR	HUMBOLDT	PERSHING	ALL OTHER 1/	NEVADA TOTAL
	<i>Harvested Acres</i>			
1983. . .	2,900	6,800	300	10,000
1984. . .	2,700	7,000	300	10,000
1985. . .	2,500	8,300	200	11,000
1986. . .	2,500	7,300	200	10,000
1987. . .	3,100	6,700	200	10,000
1988. . .	3,700	7,100	200	11,000
1989. . .	4,700	9,300	-	14,000
<i>Yield Per Acre In Lbs.</i>				
1983. . .	330	440	335	405
1984. . .	450	560	385	525
1985. . .	540	715	425	670
1986. . .	410	670	425	600
1987. . .	490	700	450	630
1988. . .	520	705	550	640
1989. . .	640	745	-	710
<i>Production Of Clean Seed In 000 Lbs.</i>				
1983. . .	955	2,995	100	4,050
1984. . .	1,215	3,920	115	5,250
1985. . .	1,350	5,935	85	7,370
1986. . .	1,025	4,890	85	6,000
1987. . .	1,520	4,690	90	6,300
1988. . .	1,925	5,005	110	7,040
1989. . .	3,010	6,930	-	9,940

1/ Churchill, Lander, Lincoln, Nye, Washoe and White Pine.

# CATTLE AND CALVES

January 1, Inventory, 1940-1990



**CATTLE AND CALVES: INVENTORY, JANUARY 1, 1989-90 1/**

CLASS OF LIVESTOCK	1989	1990	90 AS	1989	1990	90 AS
	-- 000 Head --		% OF 89	-- 000 Head --		% OF 89
All Cattle And Calves. . . . .	520	570	110	99,180	99,337	100
All Cows That Have Calved. . . . .	264	310	117	43,727	43,854	100
Beef Cows . . . . .	245	290	118	33,515	33,705	101
Milk Cows . . . . .	19	20	105	10,212	10,149	99
Heifers 500 lbs+ . . . . .	64	74	116	17,407	17,858	103
Beef Replacement. . . . .	44	50	114	5,477	5,474	100
Milk Replacement. . . . .	8	8	100	4,205	4,291	102
Other Heifers . . . . .	12	16	133	7,725	8,093	105
Steers 500 lbs+. . . . .	34	34	100	15,679	16,067	103
Bulls 500 lbs+ . . . . .	14	15	107	2,215	2,211	100
Calves Under 500 lbs . . . . .	144	137	95	20,152	19,348	96
Inventory Value (000 \$'s). . . . .	283,400	319,200	113	60,234,219	63,627,207	106
Value Per Head (\$'s) . . . . .	545	560	103	607	641	106

1/ Sum of classes may not add to total due to rounding.

**CATTLE AND CALVES: INVENTORY, SUPPLY AND DISPOSITION, NEVADA, 1989-90**

YEAR	CATTLE	ALL CALVES	INSHIPMENTS	MARKETINGS		FARM	DEATHS	
	JAN 1	BORN		CATTLE	CALVES	SLAUGHTER	CATTLE	CALVES
	-- 000 Head --							
1980. . . . .	595	280	45	149	102	5	9	15
1981. . . . .	640	290	30	134	92	5	11	18
1982. . . . .	700	290	20	193	131	5	11	20
1983. . . . .	650	295	25	162	109	5	12	22
1984. . . . .	660	285	20	185	125	5	10	20
1985. . . . .	620	270	25	151	120	5	10	19
1986. . . . .	610	260	15	188	115	5	9	18
1987. . . . .	580	235	10	164	104	5	7	15
1988. . . . .	530	235	10	131	95	5	8	16
1989. . . . .	520	255	20	113	77	5	10	20
1990. . . . .	570							

**CATTLE AND CALVES: PRODUCTION AND INCOME, NEVADA, 1980-89**

YEAR	PRODUCTION	MARKETINGS	VALUE OF	CASH RECEIPTS	1/VALUE OF HOME	GROSS
	-- 000 Lbs --		PRODUCTION	-- 000 \$'s --		INCOME
1980. . . . .	198,185	190,050	126,602	120,864	3,464	124,328
1981. . . . .	197,965	168,010	105,697	89,395	2,932	92,327
1982. . . . .	209,305	262,015	100,572	124,001	2,154	126,155
1983. . . . .	224,850	230,725	105,830	107,689	2,875	110,564
1984. . . . .	219,110	258,425	105,263	123,418	2,392	125,810
1985. . . . .	194,060	214,430	92,836	101,753	2,361	104,114
1986. . . . .	199,625	249,875	96,094	119,670	2,399	122,069
1987. . . . .	179,360	219,240	102,743	125,088	2,836	127,924
1988. . . . .	170,000	179,475	113,508	119,298	3,321	122,619
1989. . . . .	185,360	141,495	125,716	97,350	3,878	101,228

1/ Receipts from marketings and sale of farm slaughter.

## CATTLE ON FEED

Cattle and calves on feed for slaughter market on January 1, 1990 were estimated at 28,000 head--3 percent lower than the preceding year and well below the record high 51,000 head on feed January 1, 1974.

### CATTLE AND CALVES: NUMBER ON FEED ON JANUARY 1, NEVADA, 1987-90

ITEM	1987	1988	1989	1990	1990 AS %
	<i>Thousand Head</i>				<i>OF 1989</i>
Number on Feed for Slaughter Market	24	28	29	28	97

### CATTLE AND CALVES: INVENTORY, JANUARY 1, BY COUNTIES, NEVADA, 1985-90

COUNTY & DISTRICT	1985	1986	1/ 1987	1/ 1988	1/ 1989	1990
	<i>Number of Head</i>					
Carson City . . . . .	1,200	1,200	1,100	1,100	1,100	1,100
Churchill . . . . .	68,000	65,000	59,000	50,000	48,000	54,000
Douglas . . . . .	19,000	18,000	20,000	18,000	17,000	22,000
Humboldt . . . . .	69,000	68,000	69,000	65,000	63,000	69,000
Lyon . . . . .	51,000	48,000	47,000	42,000	41,000	47,000
Pershing . . . . .	27,000	26,000	27,000	25,000	24,000	27,000
Storey . . . . .	100	100	300	200	100	300
Washoe . . . . .	32,000	33,000	32,000	31,000	30,000	31,000
District 1	267,300	259,300	255,400	232,300	224,200	251,400
Elko . . . . .	180,000	178,000	180,000	169,000	176,000	181,000
Eureka . . . . .	38,000	37,000	17,000	15,000	12,000	15,000
Lander . . . . .	28,000	29,000	38,000	35,000	34,000	37,000
White Pine . . . . .	31,000	30,000	26,000	22,000	21,000	25,000
District 3	277,000	274,000	261,000	241,000	243,000	258,000
Clark . . . . .	17,000	16,000	16,000	14,000	13,000	15,000
Esmeralda . . . . .	11,000	12,000	11,000	10,000	9,000	11,000
Lincoln . . . . .	19,000	20,000	12,000	11,000	10,000	12,000
Mineral . . . . .	4,700	4,700	4,600	3,700	3,800	3,600
Nye . . . . .	24,000	24,000	20,000	18,000	17,000	19,000
District 8	75,700	76,700	63,600	56,700	52,800	60,600
STATE	620,000	610,000	580,000	530,000	520,000	570,000

1/ Revised





**HONEY BEE COLONIES, HONEY PRODUCTION, VALUE  
AND STOCKS, NEVADA, 1976-89**

YEAR.	COLONIES OF BEES	YIELD PER COLONY	TOTAL PRODUCTION	PRICE PER POUND	VALUE OF PRODUCTION	HONEY STOCKS DEC 15
	<i>000</i>	<i>Lbs.</i>	<i>000 Lbs.</i>	<i>Cents</i>	<i>000 \$'s</i>	<i>000 Lbs.</i>
1976.	9	55	495	53.3	264	20
1977.	10	55	550	57.2	315	193
1978.	9	40	360	60.2	217	108
1979.	12	35	420	60.3	253	105
1980.	11	60	660	72.0	475	231
1989.	12	35	420	75.0	315	88
1982.	Discontinued in 1982 -- Reinstated in 1986					
1986.	9	40	360	50.0	180	54
1987.	11	30	330	79.0	261	66
1988.	9	30	270	47.0	127	54
1989.	15	54	810	47.0	381	162

**RANGE AND PASTURE CONDITION - FIRST OF MONTH, NEVADA, 1970-90**

YEAR	APRIL	MAY	JUNE	JULY	AUGUST	SEPTEMBER	OCTOBER	NOVEMBER	DECEMBER
	<i>Percent</i>								
1970.	81	77	83	85	86	82	84	83	*
1971.	81	85	88	92	87	89	83	85	*
1972.	84	74	71	73	70	61	77	78	84
1973.	89	94	92	95	87	88	88	82	85
1974.	91	85	78	73	65	60	62	59	65
1975.	80	75	82	80	85	89	90	94	91
1976.	82	72	75	68	68	69	80	84	70
1977.	47	55	70	75	75	69	80	75	66
1978.	95	84	87	91	86	86	89	85	90
1979.	92	92	89	85	83	82	78	85	85
1980.	94	87	98	97	95	94	95	94	90
1981.	89	91	82	78	62	60	65	66	67
1982.	88	90	90	86	87	95	93	99	**
1983.	92	91	102	97	99	102	102	105	**
1984.	88	95	84	89	88	95	96	105	**
1985.	87	85	77	70	60	69	66	72	**
1986.	**	89	87	83	83	70	72	72	**
1987.	**	58	79	79	75	69	66	62	**
1988.	**	64	61	60	60	58	56	56	**
1989.	**	74	76	68	69	62	63	71	**
1990.	**	68	70	73	61				

\* Data not available prior to 1972.

\*\* Discontinued.

**SHEEP AND LAMB INVENTORY, JANUARY 1, 1989-90 1/**

CLASS OF LIVESTOCK	NEVADA			UNITED STATES		
	1989	1990	90 AS %	1989	1990	90 AS %
	OF 89			OF 89		
	- - 000 Head - -			- - - 000 Head - - -		
			Pct.			Pct.
All Sheep & Lambs. . . . .	87	101	116	10,857.5	11,358.4	105
On Feed. . . . .	2	4	200	1,646.0	1,717.0	104
Stock Sheep. . . . .	85	97	114	9,211.5	9,651.4	105
Lambs. . . . .	13	14	108	1,690.3	1,646.9	97
Ewes . . . . .	12	13	108	1,344.3	1,337.7	100
Wethers & Rams . . . . .	1	1	100	346.0	309.2	89
One Year and Older . . . . .	72	83	115	7,521.2	8,004.5	106
Ewes . . . . .	70	80	114	7,187.1	7,648.7	106
Wethers & Rams . . . . .	2	3	150	334.1	355.1	107
Lamb Crop. . . . .	84	-	-	7,739.0	-	-
Inventory Value (000 \$'s):	7,482	9,545	126	899,479	997,809	111
Value per head (\$'s):	86.00	94.50	98	82.80	87.80	106

1/ Sum of classes may not add to total due to rounding.

**SHEEP AND LAMBS: INVENTORY, SUPPLY AND DISPOSITION, NEVADA, 1980-89**

YEAR	SHEEP &	LAMB	INSHIPMENTS	MARKETINGS		FARM	DEATHS	
	LAMBS			CROP	SHEEP		LAMBS	SHEEP
	JAN 1	CROP		000 Head				
1980 . . . . .	122	93	68	6	110	3	9	21
1981 . . . . .	134	97	140	13	199	3	10	17
1982 . . . . .	129	92	159	18	221	3	10	18
1983 . . . . .	110	85	190	15	241	3	7	16
1984 . . . . .	103	83	164	7	215	3	8	17
1985 . . . . .	100	72	41	17	92	3	6	14
1986 . . . . .	81	73	2	2	43	3	7	15
1987 . . . . .	86	80	18	2	56	3	7	20
1988 . . . . .	96	74	4	15	43	3	8	18
1989 . . . . .	87	84	12	2	49	3	9	19
1990 . . . . .	101							

**SHEEP AND LAMBS: PRODUCTION AND INCOME, NEVADA, 1980-89**

YEAR	PRODUCTION	MARKETINGS	VALUE OF	CASH	VALUE OF HOME	GROSS
			PRODUCTION	RECEIPTS	CONSUMPTION	INCOME
	000 Lbs.			000 \$'s		
1980 . . . . .	7,730	12,210	4,151	7,122	129	7,251
1981 . . . . .	9,395	22,325	4,688	11,499	118	11,617
1982 . . . . .	8,925	25,185	3,615	10,228	93	10,321
1983 . . . . .	11,830	29,655	4,566	11,497	85	11,582
1984 . . . . .	10,775	25,625	5,372	12,937	110	13,047
1985 . . . . .	7,085	12,780	3,747	6,461	123	6,584
1986 . . . . .	5,721	5,046	3,652	3,333	150	3,483
1987 . . . . .	6,476	6,476	4,027	4,471	158	4,629
1988 . . . . .	5,481	6,781	2,641	2,943	125	3,068
1989 . . . . .	6,102	5,102	3,240	2,909	133	3,042

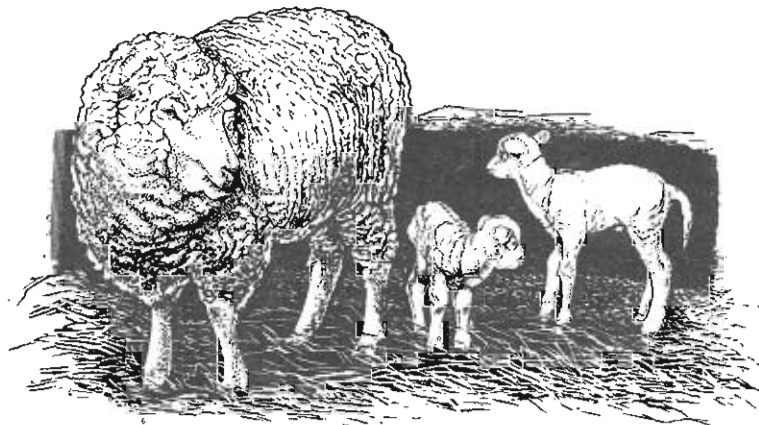
1/ Receipts from marketings and sale of farm slaughter.

**SHEEP AND LAMBS: INVENTORY, JANUARY 1, BY COUNTIES, NEVADA, 1985-90**

COUNTY	1985	1986	1987	1988	1989	1990
Carson City.	2,800	3,000	3,000	3,100	2,800	3,000
Churchill.	4,000	4,000	5,000	4,900	1,800	2,000
Douglas.	9,000	7,000	7,000	6,000	5,000	5,200
Elko.	31,000	22,000	22,000	19,200	20,000	25,000
Eureka.	3,000	4,000	4,000	5,600	2,300	2,800
Humboldt.	5,000	4,000	6,000	7,700	5,500	5,600
Lander.	4,000	4,000	4,000	4,000	3,000	3,700
Lyon.	9,000	6,000	6,000	9,000	10,000	12,400
Nye.	2,000	2,000	2,000	1,800	1,900	2,500
Pershing.	11,000	7,000	9,000	11,000	12,000	12,000
Washoe.	1,500	3,000	2,000	3,000	4,000	5,500
White Pine.	17,000	14,000	15,000	19,700	18,000	18,700
All Other.	700	1,000	1,000	1,000	700	2,600
STATE	100,000	81,000	86,000	96,000	87,000	101,000

**WOOL PRODUCTION AND VALUE, NEVADA 1979-89**

YEAR	SHEEP SHORN <i>Thousand Head</i>	WEIGHT	WOOL	PRICE	VALUE <i>Thousand Dollars</i>
		PER FLEECE <i>Pounds</i>	PRODUCTION <i>Thousand Lb.</i>	PER POUND <i>Dollars</i>	
1979.	100	10.3	1,030	.84	865
1980.	108	10.0	1,080	.88	950
1981.	112	10.0	1,120	.97	1,086
1982.	104	9.8	1,019	.67	683
1983.	95	10.2	969	.64	620
1984.	84	10.0	840	.89	748
1985.	78	10.2	796	.62	494
1986.	76	10.0	760	.68	517
1987.	83	10.0	830	.95	789
1988.	91	10.0	910	1.43	1,301
1989.	82	9.5	779	1.42	1,106



HOG AND PIG INVENTORY, DECEMBER 1, 1988-89 1/

CLASS OF LIVESTOCK	NEVADA			UNITED STATES		
	1988	1989	89 AS % OF 88	1988	1989	89 AS % OF 88
	- - 000 Head - - Pct.			- - - 000 Head - - - Pct.		
All Hogs & Pigs . . . . .	15	14	93	55,469	53,852	97
Breeding. . . . .	2	2	100	7,054	6,868	97
Market. . . . .	13	12	92	48,415	46,983	97
Inventory Value (000 \$'s)	1,223	1,148	94	3,677,751	4,258,285	116
Value per Head (\$'s)	81.50	82.00	101	66.30	79.10	119

1/ Sum of classes may not add to total due to rounding.

HOGS AND PIGS: INVENTORY, SUPPLY AND DISPOSITION, NEVADA, 1979-1990

YEAR	HOGS & PIGS	PIG CROP		INSHIPMENTS	MARKETINGS	FARM	
	DEC 1/	DEC-MAY 1/	JUN-NOV			SLAUGHTER	DEATHS
	- - - - - Number of Head - - - - -						
1979. . . . .	10,000	9,800	8,400	100	15,300	1,000	1,000
1980. . . . .	11,000	9,100	9,000	100	15,200	1,000	1,000
1981. . . . .	12,000	9,100	9,100	-	15,200	1,000	1,000
1982. . . . .	13,000	9,100	10,000	-	16,800	500	800
1983. . . . .	14,000	11,000	11,000	-	20,700	400	900
1984. . . . .	14,000	12,000	10,000	-	21,800	300	900
1985. . . . .	13,000	10,000	12,000	-	18,800	200	1,000
1986. . . . .	15,000	10,000	11,000	-	20,800	200	1,000
1987. . . . .	14,000	13,000	13,000	1,000	23,800	200	1,000
1988. . . . .	16,000	12,400	14,200	1,000	27,800	200	1,000
1989. . . . .	15,000	13,200	12,400	2,400	27,500	200	1,300
1990. . . . .	14,000						

1/ December 1 of preceding year.

HOGS AND PIGS: PRODUCTION AND INCOME, NEVADA, 1979-89

YEAR	PRODUCTION	MARKETINGS	VALUE OF PRODUCTION	CASH RECEIPTS	VALUE OF HOME CONSUMPTION	GROSS INCOME
	- - - 000 Lbs. - - -		- - - - - 000 \$'s - - - - -			
	1979. . . . .	3,888	3,346	1,613	1,391	142
1980. . . . .	3,578	3,322	1,404	1,307	134	1,441
1981. . . . .	3,979	3,322	1,303	1,091	111	1,202
1982. . . . .	3,813	3,596	1,669	1,577	75	1,652
1983. . . . .	4,467	4,399	1,792	1,765	74	1,839
1984. . . . .	4,688	4,566	1,658	1,616	49	1,665
1985. . . . .	4,151	3,929	1,414	1,339	32	1,371
1986. . . . .	4,288	4,171	1,824	1,774	40	1,814
1987. . . . .	5,372	5,029	2,380	2,243	42	2,285
1988. . . . .	5,563	5,641	1,850	1,903	31	1,934
1989. . . . .	5,520	5,711	1,800	1,909	31	1,940

## LIVESTOCK SLAUGHTER

Total liveweight of animals slaughtered in Nevada's commercial slaughter plants increased 19 percent during 1989. Cattle accounted for 1.8 million pounds or 42 percent of the total. These estimates include slaughter in Nevada's 6 federally inspected plants, but exclude animals slaughtered on farms and ranches.

### COMMERCIAL LIVESTOCK SLAUGHTER BY CLASSES, NEVADA, 1985-89

SPECIES & YEAR	LIVEWEIGHT			SPECIES & YEAR	LIVEWEIGHT		
	HEAD	AVERAGE	TOTAL		HEAD	AVERAGE	TOTAL
	No.	Lbs.	000 Lbs.		No.	Lbs.	000 Lbs.
<u>Cattle</u>				<u>Sheep &amp; Lambs</u>			
1985 . . .	6,400	1,067	6,870	1985 . . .	2,500	113	284
1986 . . .	4,700	1,112	5,201	1986 . . .	2,400	122	292
1987 . . .	2,400	976	2,363	1987 . . .	2,100	118	253
1988 . . .	2,300	1,004	2,296	1988 . . .	2,300	120	276
1989 . . .	1,800	1,010	1,841	1989 . . .	2,000	123	248
<u>Calves</u>				<u>Hogs</u>			
1985 . . .	-	-	-	1985 . . .	3,100	215	660
1986 . . .	-	-	-	1986 . . .	2,700	205	556
1987 . . .	100	405	35	1987 . . .	2,200	228	500
1988 . . .	1,200	545	637	1988 . . .	2,400	209	502
1989 . . .	3,600	519	1,862	1989 . . .	2,000	231	462

### COMMERCIAL LIVESTOCK SLAUGHTER BY MONTHS, NEVADA, 1989 1/

MONTH	CATTLE		CALVES		SHEEP & LAMBS		HOGS		ALL SPECIES TOTAL LIVEWEIGHT
	TOTAL	LIVE-	TOTAL	LIVE-	TOTAL	LIVE-	TOTAL	LIVE-	
	HEAD	WEIGHT	HEAD	WEIGHT	HEAD	WEIGHT	HEAD	WEIGHT	
	No.	000 Lb.	No.	000 Lb.	No.	000 Lb.	No.	000 Lb.	000 Lb.
January . . .	200	150	500	335	100	19	300	34	538
February . . .	100	104	600	314	100	8	100	30	456
March . . .	200	144	600	273	-	-	100	29	446
April . . .	100	155	500	213	-	-	100	20	388
May . . .	200	201	500	274	200	22	300	70	567
June . . .	200	235	100	77	100	11	200	44	367
July . . .	200	197	400	206	400	45	200	39	487
August . . .	200	216	300	168	300	38	200	58	480
September . . .	100	106	-	-	300	38	100	26	170
October . . .	100	103	-	-	200	30	100	36	169
November . . .	200	141	-	-	100	14	200	45	200
December . . .	100	88	-	-	100	15	200	29	132
Total	1,800	1,841	3,600	1,862	2,000	248	2,000	462	4,413

1/ Totals may not add due to rounding. Some months are not printed to avoid disclosing individual operations, but the data is included in annual totals.

**MILK PRODUCTION, FARM VALUE, UTILIZATION, AND MARKETING RECEIPTS  
NEVADA, 1979-89**

YEAR	MILK					
	PRODUCTION	VALUE OF PRODUCTION	UTILIZATION		MARKETING RECEIPTS	
	<i>Million Lbs.</i>	<i>000 \$'s</i>	FARM USES	SOLD 1/	PER LB. MILK FAT	CASH RECEIPTS
		<i>Million Pounds</i>			<i>\$'s</i>	<i>000 \$'s</i>
1979.	199	22,885	5	194	3.34	22,310
1980.	219	27,813	5	214	3.62	27,178
1981.	223	29,882	5	218	3.79	29,212
1982.	225	29,925	5	220	3.73	29,260
1983.	227	30,418	5	222	3.81	29,748
1984.	235	31,725	5	230	3.78	31,050
1985.	242	30,976	5	237	3.52	30,336
1986.	250	30,500	5	245	3.36	29,890
1987.	263	32,875	5	258	3.47	32,250
1988.	278	33,638	5	273	3.33	33,275
1989.	292	39,582	5	287	3.75	38,904

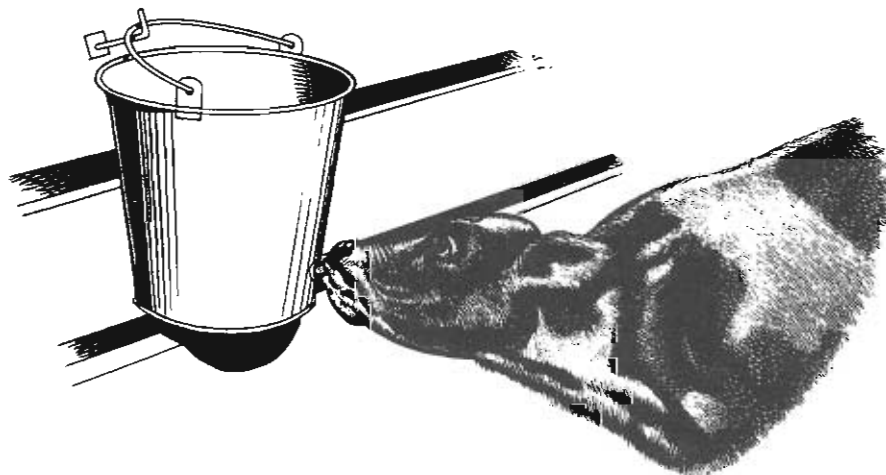
1/ Milk equivalent of cream sold.

**MILK: COWS MILKED, PRODUCTION PER COW, TOTAL PRODUCTION  
NEVADA, BY QUARTER, 1987-89**

QUARTER	COWS MILKED 1/			MILK PER COW 2/			MILK PRODUCTION 2/		
	1987	1988	1989	1987	1988	1989	1987	1988	1989
	<i>000's</i>			<i>Lbs.</i>			<i>Million Lbs.</i>		
Jan-Mar.	19.0	19.0	19.0	3,285	3,515	3,805	62.4	66.8	72.3
Apr-Jun.	19.0	19.0	20.0	3,470	3,760	3,885	65.9	71.4	77.7
Jul-Sep.	19.0	19.0	20.0	3,620	3,715	3,700	68.8	70.6	74.0
Oct-Dec.	19.0	19.0	20.0	3,470	3,640	3,400	65.9	69.2	68.0
Annual	19.0	19.0	19.8	13,842	14,632	14,747	263.0	278.0	292.0

1/ Excludes heifers not yet fresh.

2/ Excludes milk sucked by calves.



**ALL MILK PRICE AND AVERAGE FAT TEST OF MILK SOLD BY FARMERS, BY MONTHS,  
NEVADA 1987-1989**

MONTH	ALL MILK PRICE PER CWT			FAT TEST OF MILK SOLD		
	1987	1988	1989	1987	1988	1989
	-\$'s			Percent		
January . . .	12.80	12.40	12.80	3.83	3.80	3.79
February . . .	12.55	12.25	12.80	3.72	3.70	3.77
March . . . .	12.35	12.15	12.80	3.66	3.65	3.61
April . . . .	12.00	12.00	12.40	3.57	3.60	3.49
May . . . . .	12.00	11.80	12.40	3.49	3.58	3.48
June . . . . .	12.20	11.65	12.40	3.47	3.48	3.45
July . . . . .	12.20	11.55	12.60	3.47	3.45	3.47
August . . . .	12.35	11.80	12.80	3.48	3.49	3.55
September . .	12.80	12.40	13.20	3.51	3.54	3.62
October . . . .	12.75	12.20	13.70	3.62	3.62	3.66
November . . .	13.00	12.45	13.80	3.75	3.73	3.71
December . . .	12.60	12.90	14.60	3.75	3.81	3.72
Annual	12.50	12.10	13.10	3.60	3.63	3.61

**QUANTITIES OF DAIRY PRODUCTS MANUFACTURED, BY MONTHS, NEVADA, 1987-89**

MONTH	DAIRY PRODUCTS MANUFACTURED					
	ICE CREAM 2/			ICE MILK 2/		
	1987	1988	1989	1987	1988	1989
	000 Gallons					
January . . .	93	87	93	106	100	106
February . . .	101	102	101	111	124	111
March . . . .	119	115	119	136	139	136
April . . . .	123	110	123	155	142	155
May . . . . .	114	115	114	145	178	145
June . . . . .	128	117	128	181	163	181
July . . . . .	144	137	144	213	168	213
August . . . .	135	128	135	205	176	205
September . .	114	113	114	163	137	163
October . . . .	107	98	107	158	138	158
November . . .	85	96	85	121	99	121
December . . .	86	85	86	113	111	113
Annual	1,349	1,303	1,349	1,807	1,675	1,807

1/ Sherbet production on annual basis: 1987 - 68,000 gallons; 1988 - 62,000 gallons; 1989 - 68,000 gallons. Other items manufactured are not shown when less than 3 plants have reported since individual operations might be disclosed.

2/ Includes production in regular dairy plants and soft frozen products sold directly from a freezer.

**MILK COWS AND PRODUCTION, BY COUNTIES, NEVADA, 1988-89**

COUNTY	1988			1989		
	MILK COWS	MILK PER COW	MILK PRODUCTION	MILK COWS	MILK PER COW	MILK PRODUCTION
	No.	Lb.	Million Lb.	No.	Lb.	Million Lb.
Churchill . . .	7,100	14,300	101.5	7,200	14,400	103.7
Clark . . . . .	6,300	15,000	94.5	6,900	15,100	104.2
Douglas . . . .	2,000	15,400	30.8	2,100	15,500	32.6
Lyon . . . . .	1,400	14,700	20.6	1,200	14,700	17.6
Washoe . . . .	900	14,400	13.0	1,000	14,700	14.7
All Others . . .	1,300	13,500	17.6	1,400	13,700	19.2
State	19,000	14,632	278.0	19,800	14,747	292.0

## CHICKEN AND EGGS

Total chickens on Nevada farms and ranches were estimated at 17,000 on December 1, 1989. This was the same as a year earlier. Of the total chickens, 13,000 were of laying age on December 1, 1989.

Total value of chickens in Nevada on December 1, 1989 came to \$47,000 which was down 13 percent from a year earlier. Value per bird, at \$2.75, was down 45 cents from the previous year.

### CHICKENS ON FARMS, DECEMBER 1, 1987-89 1/

TYPE	NEVADA				UNITED STATES			
	1987	1988	1989	89 AS % OF 88	1987	1988	1989	89 AS % OF 88
	- Thousand -			Percent	- Thousand -			Percent
Total Chickens..	18	17	17	100	380,437	356,105	355,790	100
Laying Age . . .	13	13	13	100	288,320	275,447	270,628	98
Hens. . . . .	10	9	8	89	125,763	122,834	117,296	95
Pullets . . . .	3	4	5	125	162,557	152,613	152,332	100
All Others. . . .	5	4	4	100	92,117	80,658	85,162	106

1/ Excludes commercial broilers.

### VALUE OF CHICKENS ON FARMS, DECEMBER 1, 1987-89 1/

VALUE	NEVADA			UNITED STATES		
	1987	1988	1989	1987	1988	1989
Per Bird . . . . .	3.10	3.20	2.75	1.87	2.04	2.16
Total Thousand Dollars . . .	56	54	47	706,131	726,442	769,527

1/ Excludes commercial broilers.

### EGG PRODUCTION: NUMBER OF LAYERS, EGGS PER LAYER AND TOTAL PRODUCTION, BY QUARTERS, NEVADA, 1987-89

QUARTER	LAYERS			EGGS PER 100 LAYERS 1/			TOTAL PRODUCTION		
	1987	1988	1989	1987	1988	1989	1987	1988	1989
	- - Thousands - -			- - - - Number - - - -			- - - Thousands - - -		
Dec. 2/ - Feb	12.0	13.0	13.0	3,825	3,731	3,312	459	485	431
March - May	12.0	13.0	13.0	4,965	4,462	4,324	596	580	562
June - Aug	12.0	13.0	13.0	5,290	4,876	5,060	635	634	658
Sept - Nov	13.0	13.0	13.0	4,095	3,913	4,277	532	509	556
Total 3/	12.0	13.0	13.0	185	170	170	2,222	2,208	2,207

1/ Number of eggs produced divided by average number of layers on hand.

2/ December preceding year.

3/ Layers are the average during the year. Rate of lay is the annual per layer.

### EGGS: PRODUCTION, DISPOSITION AND INCOME, NEVADA, 1985-89

YEAR	EGGS	PRICE	GROSS
	PRODUCED	PER DOZEN	INCOME
	<i>Million Eggs</i>	<i>Cents</i>	<i>Thousand Dollars</i>
1985 . . . . .	2.2	42.5	78
1986 . . . . .	2.2	49.1	90
1987 . . . . .	2.2	40.2	74
1988 . . . . .	2.2	38.8	71
1989 . . . . .	2.3	56.0	107



## CENSUS REVISIONS

### BARLEY CENSUS REVISIONS 1983-84, ACREAGE, YIELD AND PRODUCTION BY COUNTIES

COUNTY	1983				1984			
	PLANTED	HARVESTED	YIELD	PRODUCTION	PLANTED	HARVESTED	YIELD	PRODUCTION
	-- Acres --		-- Bushels --		-- Acres --		-- Bushels --	
Churchill . . . .	3,200	2,800	80.0	224,000	3,000	2,500	85.0	212,500
Eureka . . . . .	3,000	2,600	80.0	208,000	2,000	1,500	90.0	135,000
Humboldt . . . .	14,600	13,900	80.0	1,112,000	14,200	13,600	95.0	1,292,000
Lander . . . . .	900	700	70.0	49,000	500	400	65.0	26,000
Lyon . . . . .	3,100	2,600	80.0	208,000	2,000	1,600	85.0	136,000
Pershing . . . .	2,200	2,000	95.0	190,000	2,000	1,700	90.0	153,000
Washoe . . . . .	600	500	80.0	40,000	400	300	80.0	24,000
White Pine . . .	700	600	80.0	48,000	500	400	80.0	32,000
All Others . . .	2,700	2,300	70.0	161,000	2,400	2,000	75.0	149,500
State	31,000	28,000	80.0	2,240,000	27,000	24,000	90.0	2,160,000

### BARLEY CENSUS REVISIONS 1985-86, ACREAGE, YIELD AND PRODUCTION BY COUNTIES

COUNTY	1985				1986			
	PLANTED	HARVESTED	YIELD	PRODUCTION	PLANTED	HARVESTED	YIELD	PRODUCTION
	-- Acres --		-- Bushels --		-- Acres --		-- Bushels --	
Churchill . . . .	2,600	2,100	80.0	168,000	1,900	1,500	80.0	120,000
Eureka . . . . .	1,500	1,100	85.0	93,500	800	600	85.0	51,000
Humboldt . . . .	12,700	11,900	80.0	952,000	11,000	10,200	95.0	969,000
Lander . . . . .	500	400	80.0	32,000	400	300	80.0	24,000
Lyon . . . . .	1,500	1,100	80.0	88,000	800	700	80.0	56,000
Pershing . . . .	1,600	1,200	85.0	102,000	900	800	90.0	72,000
White Pine . . .	400	300	80.0	24,000				
All Others . . .	2,200	1,900	74.0	140,500	2,200	1,900	78.0	148,000
State	23,000	20,000	80.0	1,600,000	18,000	16,000	90.0	1,440,000

### BARLEY CENSUS REVISIONS 1987-88, ACREAGE, YIELD AND PRODUCTION BY COUNTIES

COUNTY	1987				1988			
	PLANTED	HARVESTED	YIELD	PRODUCTION	PLANTED	HARVESTED	YIELD	PRODUCTION
	-- Acres --		-- Bushels --		-- Acres --		-- Bushels --	
Churchill . . . .	1,800	1,400	85.0	119,000	1,400	900	95.0	85,500
Eureka . . . . .	700	500	75.0	37,500	500	400	70.0	28,000
Humboldt . . . .	9,400	8,600	95.0	817,000	8,400	7,600	80.0	608,000
Lander . . . . .	400	300	75.0	22,500	400	300	75.0	22,500
Lyon . . . . .	700	600	90.0	54,000	500	400	75.0	30,000
Pershing . . . .	800	700	90.0	63,000	700	600	95.0	57,000
All Others . . .	2,200	1,900	77.0	147,000	2,100	1,800	72.0	129,000
State	16,000	14,000	90.0	1,260,000	14,000	12,000	80.0	960,000

## CENSUS REVISIONS

### MILK COWS AND PRODUCTION, BY COUNTIES, NEVADA, 1983-84

COUNTY	1983			1984		
	MILK COWS	MILK PER COW	MILK PRODUCTION	MILK COWS	MILK PER COW	MILK PRODUCTION
	<i>No.</i>	<i>Lb.</i>	<i>Million Lb.</i>	<i>No.</i>	<i>Lb.</i>	<i>Million Lb.</i>
Churchill . . .	5,400	14,000	75.6	5,800	13,500	78.3
Clark . . . . .	6,200	12,900	80.0	6,600	12,700	83.8
Douglas . . . .	2,100	14,100	29.6	2,300	13,300	30.6
Lyon. . . . .	1,500	14,500	21.8	1,600	14,100	22.6
Washoe. . . . .	700	13,400	9.4	700	13,400	9.4
All Others. . .	800	13,300	10.6	800	12,900	10.3
State	16,700	13,593	227.0	17,800	13,202	235.0

### MILK COWS AND PRODUCTION, BY COUNTIES, NEVADA, 1985-86

COUNTY	1985			1986		
	MILK COWS	MILK PER COW	MILK PRODUCTION	MILK COWS	MILK PER COW	MILK PRODUCTION
	<i>No.</i>	<i>Lb.</i>	<i>Million Lb.</i>	<i>No.</i>	<i>Lb.</i>	<i>Million Lb.</i>
Churchill . . .	6,100	13,100	79.9	6,200	13,000	80.6
Clark . . . . .	6,800	12,400	84.3	6,700	13,300	89.1
Douglas . . . .	2,600	13,000	33.8	2,500	13,300	33.3
Lyon. . . . .	1,800	13,800	24.8	1,900	13,600	25.8
Washoe. . . . .	600	12,900	7.7	600	12,800	7.7
All Others. . .	900	12,800	11.5	1,100	12,300	13.5
State	18,800	12,872	242.0	19,000	13,158	250.0

### MILK COWS AND PRODUCTION, BY COUNTIES, NEVADA, 1987-88

COUNTY	1987			1988		
	MILK COWS	MILK PER COW	MILK PRODUCTION	MILK COWS	MILK PER COW	MILK PRODUCTION
	<i>No.</i>	<i>Lb.</i>	<i>Million Lb.</i>	<i>No.</i>	<i>Lb.</i>	<i>Million Lb.</i>
Churchill . . .	7,000	13,400	93.8	7,100	14,300	101.5
Clark . . . . .	6,400	14,200	90.9	6,300	15,000	94.5
Douglas . . . .	2,100	14,600	30.7	2,000	15,400	30.8
Lyon. . . . .	1,600	14,000	22.4	1,400	14,700	20.6
Washoe. . . . .	800	13,800	11.0	900	14,400	13.0
All Others. . .	1,100	12,900	14.2	1,300	13,500	17.6
State	19,000	13,842	263.0	19,000	14,632	278.0

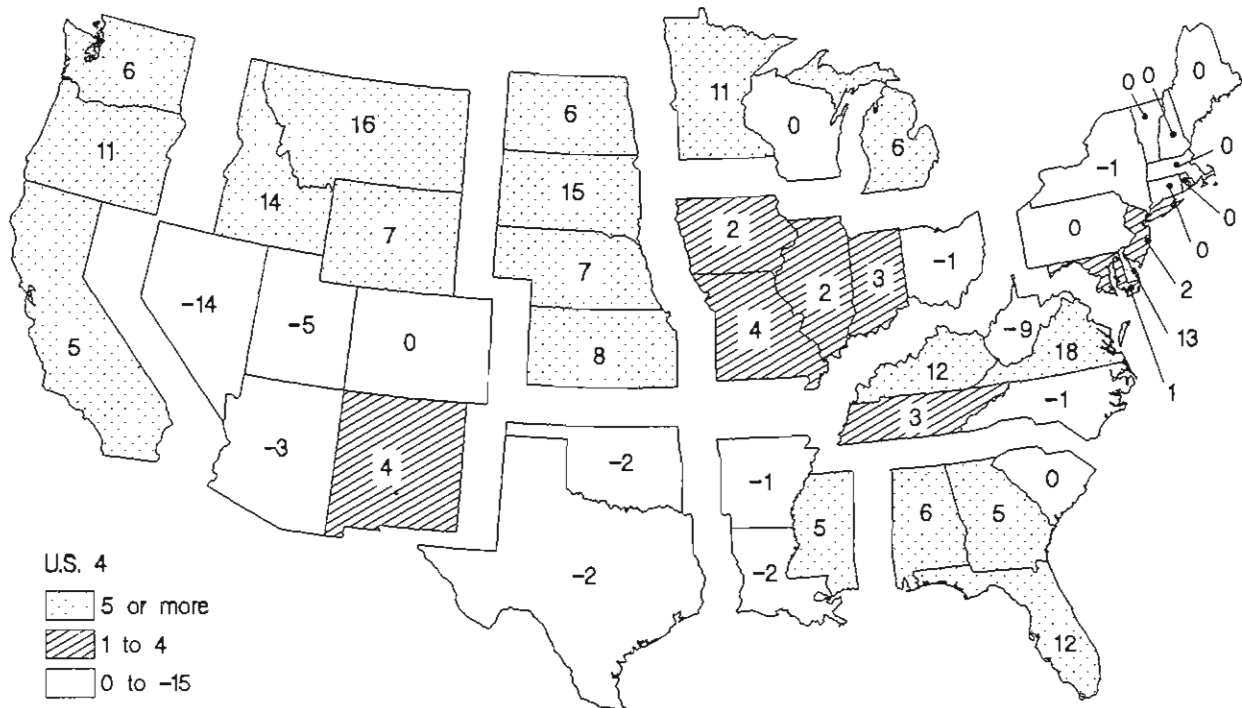


**FARM REAL ESTATE**  
**AVERAGE VALUE OF LAND AND BUILDINGS**  
*Dollars Per Acre, 1982-1990 1/*

STATE	Apr 1 1982	Apr 1 1983	Apr 1 1984	Apr 1 1985	Feb 1 1986	Feb 1 1987	Feb 1 1988	Feb 1 1989	Jan 1 1990
Montana . . .	271	259	276	243	233	200	205	209	243
Idaho . . . .	839	814	808	739	631	552	572	601	685
Wyoming . . .	193	193	199	181	159	157	147	143	153
Colorado . . .	451	454	469	437	360	368	369	369	369
New Mexico . .	195	178	194	185	161	156	180	193	200
Arizona . . . .	302	289	311	295	271	299	279	276	268
Utah . . . . .	589	560	570	513	476	451	425	425	404
NEVADA . . . .	268	249	262	244	219	240	227	234	201
Washington . .	922	933	972	943	840	756	739	769	815
Oregon . . . .	705	705	719	615	570	541	542	542	602
California . . .	1,900	1,918	1,981	1,841	1,730	1,554	1,575	1,670	1,753
48 States . . .	823	788	801	713	640	599	632	667	693

1/ Current dollars.

**Percent Change in Farmland Value Per Acre: February 1, 1989 to January 1, 1990**



## FARM LABOR

During the four survey periods between July 1989 and April 1990, the peak number of farm workers occurred in July when a total of 84,000 people were working on farms and ranches in the Mountain II Region, which includes Colorado, Nevada and Utah. The number of self-employed, unpaid and hired workers also peaked in July. Total hours worked by all types of workers was also at the highest level during July.

Wage rates were generally higher during the January and April survey periods when the average wage rate for all hired workers, regardless of method of pay or type of worker, was \$5.40 per hour. Workers paid on an hourly basis earned their highest wages during April, when the average rate was \$5.39 per hour. Livestock workers received the highest wage rates of any nonsupervisory workers in the July, October and January survey periods, but field workers received the highest nonsupervisory wage during the April survey period.

**FARM LABOR AND WAGE RATES, MOUNTAIN II REGION**  
**JULY 1989, OCTOBER 1989, JANUARY 1990, AND APRIL 1990 1/**

	JULY 9-15 1989	OCTOBER 8-14 1989	JANUARY 7-13 1990	APRIL 8-14 1990
<i>Workers on Farms (000) 2/</i>				
Total . . . . .	84	54	41	54
Self-employed . . . . .	32	25	19	25
Unpaid . . . . .	22	9	5	7
Hired . . . . .	30	20	17	22
<i>Hours Worked per Worker 2/</i>				
Self-employed . . . . .	57.6	48.2	38.7	45.6
Unpaid Workers . . . . .	36.4	33.7	33.1	31.4
Hired Workers . . . . .	48.6	45.9	38.6	43.0
<i>Method of Pay - Dollars per Hour 2/</i>				
Hourly . . . . .	4.91	4.38	4.74	5.39
Piece Rate . . . . .	3.25	3/	3/	3/
Other . . . . .	4.11	5.07	5.85	5.36
All . . . . .	4.47	4.79	5.40	5.40
<i>Type of Work - Dollars per Hour 2/</i>				
Field Workers . . . . .	4.03	4.21	4.90	5.28
Livestock Workers . . . . .	4.81	4.50	5.16	4.93
Field & Livestock Workers . . . . .	4.38	4.36	5.07	5.05
Supervisory . . . . .	4.85	7.04	7.01	7.75
Other . . . . .	3/	3/	3/	3/

1/ Mountain II Region includes Colorado, Nevada and Utah.

2/ Excludes Agricultural Service Workers.

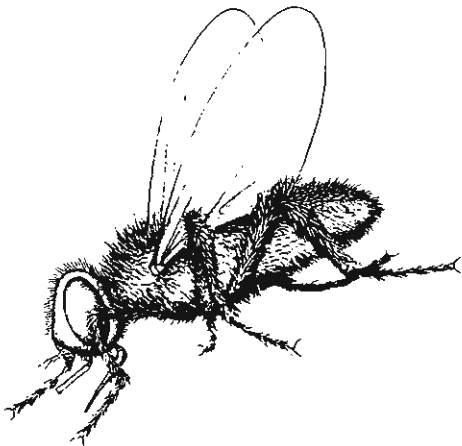
3/ Insufficient data.

# 1989 PESTICIDE AND HERBICIDE APPLICATION SUMMARY

This summary was compiled from information contained in mandatory monthly reports submitted by the 1989 Custom Applicator licensees. Its accuracy is based on these monthly reports and the data therein does not constitute approval or recommendations by the Nevada State Department of Agriculture or the National Agricultural Statistics Service.

## ALFALFA HAY

<u>PEST OR USE</u>	<u>CHEMICAL</u>	<u>RATE/ACRE</u>	<u>ACRES</u>
Aphids	Ambush	.05 OZ	72.0
	Cygon 400	.75 PT	10.0
		1.00 PT	12,833.0
	Cythion 8	1.50 PT	362.0
		Dimethoate 267	.66 PT
	Dimethoate 400	1.00 PT	368.0
		1.50 PT	190.0
		.75 PT	4,265.0
	Parathion 4	1.00 PT	6,185.0
		Phosdrin 4	.50 PT
	1.00 PT	2,721.0	
		136.0	
Aphids/Thrips	Cygon 400	1.00 PT	4,680.0
Broadleaf Weeds	2,4-DB Amine	1.75 PT	212.0
		2.00 QT	100.0
	2-4, DB Ester	1.50 QT	153.0
Grasshoppers	Cythion	8.00 OZ	688.0
	Furadan	.50 PT	500.0
	Malathion ULV-91	8.00 OZ	406.5
	Parathion 5	8.00 OZ	417.0
Grasshoppers/Aphids	Parathion	6.00 OZ	234.2
	Parathion 8	1.60 OZ	1,400.0
	Weeds	Hexazinone (Velpar)	.75 PT
1.00 QT			3,359.0
		1.50 QT	6,495.0
		2.00 PT	1,378.0
		2.50 PT	1,216.0
		2.75 PT	1,185.0
Metribuzin (Sencor)		.50 PT	20.0
		1.00 PT	1,551.0
Paraquat (Gramoxone)		1.25 PT	60.0
		1.50 QT	125.0
	2.00 QT	128.0	
Poast	2.50 PT	70.0	
	1.00 QT	60.0	
	1.50 PT	45.0	
	1.75 PT	18.0	
	2.50 PT	139.0	



ALFALFA HAY

<u>PEST OR USE</u>	<u>CHEMICAL</u>	<u>RATE/ACRE</u>	<u>ACRES</u>	
Weevils/Aphids	Dimethoate 400	.75 PT	5,546.0	
		1.00 PT	320.0	
	Furadan	.50 PT	6,283.0	
		1.00 PT	430.0	
	Parathion	6.00 OZ	370.0	
	Parathion 4	1.00 PT	7,685.0	
	Parathion 5	1.50 PT	347.0	
	Parathion 8E	.50 PT	1,132.0	
	Weevils	Dimethoate 267	.75 PT	274.0
		Furadan	.50 PT	1,219.0
		.66 PT	4,406.0	
		.75 PT	4,365.0	
		1.00 PT	4,621.0	
Parathion 4		1.00 PT	135.0	
Parathion 8E		1.00 PT	164.0	
	Total Acres Treated		90,830.7	

ALFALFA SEED

<u>PEST OR USE</u>	<u>CHEMICAL</u>	<u>RATE/ACRE</u>	<u>ACRES</u>
Aphids	Aqua 8 Parathion	1.00 PT	40.0
	Supracide 2K	1.00 QT	93.0
Broadleaf Weeds	Aceto 2,4-DB Ester	1.50 QT	26.0
	Butoxin	1.00 QT	70.0
		1.50 QT	300.0
	Butyrac Ester	1.50 QT	409.3
		2.20 PT	72.0
			42.0
Broadleaf/Weeds		2.50 PT	70.0
	2,4-DB Ester	1.50 QT	10.0
Defoliation	Des-I-Cate	1.00 GAL	93.0
	Paraquat (Gramoxone)	.50 PT	120.0
		1.00 PT	140.0
		1.50 QT	722.0
		2.00 QT	1,733.6
Dodder	Trio	20.00 LB	2,686.0
Lygus/Aphids	Dibrom 8	2.80 OZ	90.0
	Mevinphos 400	.66 PT	60.0
	Phosdrin 4EC	.66 PT	30.0
	Mites	Comite	1.00 QT
Fermon Stirrup M		4.00 OZ	56.0
Sulfer DF		1.00 LB	210.0
		2.00 LB	190.0
		2.50 LB	546.0
		3.00 LB	160.0
Thiolux		2.00 LB	120.0
			120.0
	2.50 LB	80.0	

ALFALFA SEED

<u>PEST OR USE</u>	<u>CHEMICAL</u>	<u>RATE/ACRE</u>	<u>ACRES</u>	
Weevils/Aphids	Dimethoate 267	.66 PT	148.0	
		.66 PT	131.0	
	Drexel Dimethoate	1.00 PT	255.0	
	Furadan	1.60 PT	100.0	
	Imidan 50W	1.50 LB	131.0	
	Metasystox R	1.00 QT	265.0	
		1.60 PT	75.0	
	Parathion 8	.33 PT	75.0	
	Parathion 8E	.50 PT	418.0	
	Sevin XLR Plus	1.50 QT	60.0	
	Supracide 2E	1.50 QT	155.0	
	Thiodan	1.50 PT	135.0	
	Thiodan 3EC	1.00 PT	50.0	
	Weevils	Dimethoate 267	.66 PT	86.0
			1.00 PT	90.0
Furadan		1.00 QT	2,340.0	
Imidan 50W		1.50 LB	167.0	
	Total Acres Treated		15,477.4	

BARLEY

<u>PEST OR USE</u>	<u>CHEMICAL</u>	<u>RATE/ACRE</u>	<u>ACRES</u>
Aphids	Di-Syston	8.00 OZ	1,354.0
	Dimethoate 400	.75 PT	356.0
Broadleaf Weeds	Parathion	8.00 OZ	2,264.0
	2,4-D Amine	1.00 QT	110.0
		1.50 PT	177.6
	Weedar 64A	1.00 QT	200.0
Grasshoppers	Weedone 2,4-D	.50 PT	938.0
	Malathion 57	1.50 PT	5.3
	Parathion	6.00 OZ	140.0
Weeds	Parathion 5	8.00 OZ	113.0
	2,4-D Amine	1.00 QT	3,656.0
	2,4-D LV4	1.00 PT	160.0
	Total Acres Treated		9,473.9

BRUSH

<u>PEST OR USE</u>	<u>CHEMICAL</u>	<u>RATE/ACRE</u>	<u>ACRES</u>
Mosquitoes	Baytex	3.20 OZ	320.0
	Dibrom	.75 OZ	61,000.0
	Malathion	3.00 OZ	4,950.0
	Naled	.80 OZ	200.0
	Total Acres Treated		66,470.0

CORN

<u>PEST OR USE</u>	<u>CHEMICAL</u>	<u>RATE/ACRE</u>	<u>ACRES</u>
Aphids	Dimethoate 400	.75 PT	145.0
Broadleaf Weeds	2,4-D Amine	1.00 PT	155.0
	Weedone 2,4-D	.50 PT	1,052.5
		Total Acres Treated	1,352.5

FALLOW

<u>PEST OR USE</u>	<u>CHEMICAL</u>	<u>RATE/ACRE</u>	<u>ACRES</u>
Broadleaf Weeds	2,4-D Amine	2.00 QT	167.0
	2,4-D Ester	1.50 PT	75.0
	Gordon Hi-Dep	1.00 PT	20.0
	Paraquat (Gramoxone)	2.00 QT	16.0
Grasshoppers	Furadan	.50 PT	48.0
	Parathion	6.00 OZ	340.7
		6.00 OZ	109.0
	Parathion 5	8.00 OZ	36.3
	Parathion 8E	.50 PT	47.0
Weeds	Round-Up	1.50 GAL	50.0
		4.50 QT	13.0
		6.00 PT	58.0
		Total Acres Treated	980.0

GARLIC

<u>PEST OR USE</u>	<u>CHEMICAL</u>	<u>RATE/ACRE</u>	<u>ACRES</u>
Weeds	Fusilade 2000	1.50 PT	45.0
	Prowl	2.50 PT	133.0
Winter Weeds	Goal	1.00 QT	348.0
	Paraquat (Gramoxone)	2.00 QT	526.0
		Total Acres Treated	1,052.0

GRAIN

<u>PEST OR USE</u>	<u>CHEMICAL</u>	<u>RATE/ACRE</u>	<u>ACRES</u>
Aphids	Parathion 4	1.00 PT	115.0
Broadleaf Weeds	2,4-D LV6	.50 PT	35.0
		Total Acres Treated	150.0



HAY

<u>PEST OR USE</u>	<u>CHEMICAL</u>	<u>RATE/ACRE</u>	<u>ACRES</u>
Grasshoppers	Malathion ULV-91	8.00 OZ	1,100.0
		Total Acres Treated	1,100.0

MARSH

<u>PEST OR USE</u>	<u>CHEMICAL</u>	<u>RATE/ACRE</u>	<u>ACRES</u>
Mosquitoes	Vectobac G	9.70 LB	3,415.4
		Total Acres Treated	3,415.4

MINT

<u>PEST OR USE</u>	<u>CHEMICAL</u>	<u>RATE/ACRE</u>	<u>ACRES</u>
Aphids	Malathion 57	1.00 PT	66.0
		1.50 PT	41.5
Broadleaf Weeds	Malathion 8	1.00 PT	227.5
Grasshoppers/Aphids	Buctril	1.00 PT	365.0
Mites	Cythion 8	1.00 PT	30.0
	Comite	1.00 QT	728.0
	Kelthane	1.00 QT	405.0
Weeds	Terbacil (Sinbar)	1.00 LB	470.0
		1.25 LB	368.0
		Total Acres Treated	2,701.0

NEW ALFALFA

<u>PEST OR USE</u>	<u>CHEMICAL</u>	<u>RATE/ACRE</u>	<u>ACRES</u>
Broadleaf Weeds	2,4-DB Ester	1.50 QT	66.0
		Total Acres Treated	66.0

NONCROP LAND

<u>PEST OR USE</u>	<u>CHEMICAL</u>	<u>RATE/ACRE</u>	<u>ACRES</u>
Flies	Cythion 8	1.00 PT	12.0
Grasshoppers	Furadan	.50 PT	48.0
	Parathion 5	8.00 OZ	171.0
Weeds	Diuron	12.00 LB	70.0
		4.00 LB	147.0
		6.00 LB	59.0

NONCROP LAND

<u>PEST OR USE</u>	<u>CHEMICAL</u>	<u>RATE/ACRE</u>	<u>ACRES</u>
Weeds	Diuron (Karmex)	245.00 LB*	
		6.00 LB	2.0
		8.00 LB	2.0
	Krovar	6.00 LB	130.0
	Oust	1.00 OZ	151.0
		2.00 OZ	249.0
		Total Acres Treated	1,041.0

OAT HAY

<u>PEST OR USE</u>	<u>CHEMICAL</u>	<u>RATE/ACRE</u>	<u>ACRES</u>
Broadleaf Weeds	2,4-D Amine	.50 PT	70.0
		Total Acres Treated	70.0

OATS

<u>PEST OR USE</u>	<u>CHEMICAL</u>	<u>RATE/ACRE</u>	<u>ACRES</u>
Aphids	Dimethoate 267	1.50 PT	50.0
	Dimethoate 400	.75 PT	820.0
Broadleaf Weeds	2,4-D Amine	1.50 PT	173.0
	2,4-D Ester	1.25 PT	75.0
		1.50 PT	537.0
	Banvel	3.00 OZ	180.0
	Weedar 64A	1.00 QT	242.0
Grasshoppers	Parathion	6.00 OZ	77.0
	Parathion 5	8.00 OZ	200.0
		Total Acres Treated	2,354.0

ONIONS

<u>PEST OR USE</u>	<u>CHEMICAL</u>	<u>RATE/ACRE</u>	<u>ACRES</u>
Defoliate	Diquat	2.00 QT	20.0
Nematodes	Pic Chlor	168.00 LB	
		210.00 LB	381.6
Thrips	Parathion 4	1.00 PT	85.0
Weeds	Paraquat (Gramoxone)	2.00 QT	25.0
		5.00 PT	362.0
	Round-Up	1.50 PT	51.0
		Total Acres Treated	924.6

\*Total Applied

PASTURE

<u>PEST OR USE</u>	<u>CHEMICAL</u>	<u>RATE/ACRE</u>	<u>ACRES</u>
Broadleaf Weeds	2,4-D Amine	2.00 QT	100.0
Mosquitoes	Baytex	3.20 OZ	1,260.0
	Malathion	3.00 OZ	7,725.0
	Malathion 57	8.00 OZ	1,000.0
	Malathion ULV-91	3.00 OZ	36,284.0
	Scourge	1.00 OZ	1,792.0
Sagebrush/Weeds	2,4-D LV6	.50 GAL	1,990.0
		Total Acres Treated	50,151.0

POTATOES

<u>PEST OR USE</u>	<u>CHEMICAL</u>	<u>RATE/ACRE</u>	<u>ACRES</u>
Aphids	Asana	2.00 OZ	820.0
	Thiodan	1.00 QT	4,023.0
Blight	Bravo	1.00 PT	10,819.0
	Griffin Manex II	2.94 PT	122.8
	Maneb	1.00 QT	910.0
Defoliate	Diquat	1.00 QT	90.0
		1.50 PT	125.0
Loopers/Thrips	Monitor	1.00 QT	337.0
Loopers	Dipel	1.00 LB	20.0
Sprout Inhibiter	Spud Nic	1.00 GAL	36,000.0
	Decco 273 A	1.00 GAL	37,000.0
		12.83 GAL	
Sprouts	Sprout-Nip	1G./4200CWT	277,500.0
Storage Sprouts	Drexel Super Sproutstp	1.00 GAL	400.0
Weeds	Dual 8E	1.00 QT	32.0
	Eptam	3.50 PT	110.0
	Metribuzin (Sencor)	.66 LB	55.0
		1.00 PT	968.4
White Mold	Prowl	1.00 QT	1,252.4
	Rovral	1.00 QT	
		Total Acres Treated	370,735.6

RANGELAND

<u>PEST OR USE</u>	<u>CHEMICAL</u>	<u>RATE/ACRE</u>	<u>ACRES</u>
Grasshoppers	Malathion 57	1.50 PT	10.0
	Malathion ULV-91	8.00 OZ	1,450.0
	Parathion	6.00 OZ	45.0
Grasshoppers/Aphids	Parathion	6.00 OZ	91.0
		Total Acres Treated	1,596.0

RIGHT-OF-WAY

<u>PEST OR USE</u>	<u>CHEMICAL</u>	<u>RATE/ACRE</u>	<u>ACRES</u>
Weeds	2,4-D	269.00 GAL*	
	2,4-D (Dow Formula 40)	6.00 QT*	
	2,4-D Amine	2.00 QT	565.0
	2,4-D LV4	3.00 QT	70.0
	Arsenal	18.75 GAL*	
	Atratul 4 LC	1137.20 GAL*	
	Atratul 90	6.00 LB	565.0
	Atrazine	216.00 GAL*	
		25.20 GAL*	
	Direx	2,278.20 GAL	0.0
		3,062.50 GAL	0.0
	Diuron	6.00 LB	15.0
		94.50 LB*	
	Diuron (Karmex)	5,386.00 LB*	
		6.00 LB	565.0
	Garlon	35.50 GAL	0.0
	Mont. Crop Oil	134.80 GAL*	
	Oust	118.50 LB	0.0
		2.00 OZ	15.0
		266.40 LB	0.0
		6.00 LB	0.0
	Round-Up	2.00 QT	80.0
	521.00 GAL*	0.0	
Simazine (Princep)	1867.30 GAL*		
	50.00 LB*		
Simazine	148.50 GAL*		
Telar	3.50 OZ	53.3	
	9.00 LB	0.0	
	Total Acres Treated	1,928.3	



SAGEBRUSH

<u>PEST OR USE</u>	<u>CHEMICAL</u>	<u>RATE/ACRE</u>	<u>ACRES</u>
Grasshoppers	Malathion ULV-91	8.00 OZ	4,040.0
Sagebrush/Weeds	Butyl 6	.50 GAL	12,030.0
	Total Acres Treated		16,070.0

TURF

<u>PEST OR USE</u>	<u>CHEMICAL</u>	<u>RATE/ACRE</u>	<u>ACRES</u>
Broadleaf Weeds	Weedone 2,4-D	.50 PT	8.0
	Total Acres Treated		8.0

\*Total Applied

UNKNOWN

<u>PEST OR USE</u>	<u>CHEMICAL</u>	<u>RATE/ACRE</u>	<u>ACRES</u>
Mosquitoes	Baytex 7	1.30 OZ	6,420.0
	Malathion 8	5.00 OZ	22,990.0
Total Acres Treated			29,410.0

WASTE WATER

<u>PEST OR USE</u>	<u>CHEMICAL</u>	<u>RATE/ACRE</u>	<u>ACRES</u>
Mosquitoes	Malathion 57	8.00 OZ	4,600.0
	Parathion 4	3.20 OZ	1,400.0
Total Acres Treated			6,000.0

WHEAT

<u>PEST OR USE</u>	<u>CHEMICAL</u>	<u>RATE/ACRE</u>	<u>ACRES</u>	
Aphids	Di-Syston	.33 PT	372.0	
		.66 PT	65.0	
		.75 PT	177.0	
	Dimethoate 400	8.00 OZ	1,690.0	
		.75 PT	260.0	
		Parathion	8.00 OZ	340.0
		Systox 6	.33 PT	774.0
		2,4-D Amine	.75 PT	60.0
			1.50 PT	115.0
			2.50 PT	160.0
Broadleaf Weeds	Banvel	2.33 OZ	55.0	
	Butyran Ester	1.50 QT	117.4	
Grasshoppers	Weedar 64A	2.50 PT	75.0	
		1.00 QT	274.5	
	Weedone 2,4-D	.50 PT	2,234.0	
	Parathion	6.00 OZ	20.0	
	Parathion 5	8.00 OZ	37.0	
	Grasshoppers/Aphids	Parathion	6.00 OZ	20.8
		.50 PT	120.0	
	Lygus	2,4-D Amine	1.50 QT	55.0
	Russian Wheat Aphids	Furadan	.50 PT	50.0
		Weeds	2,4-D Amine	1.00 QT
Total Acres Treated			10,167.7	

WINTER WHEAT

<u>PEST OR USE</u>	<u>CHEMICAL</u>	<u>RATE/ACRE</u>	<u>ACRES</u>
Broadleaf Weeds	2,4-D Ester	1.50 PT	473.0
Total Acres Treated			473.0

**DIRECTORY OF COUNTY EXTENSION AND ASCS OFFICE LOCATIONS**

NEVADA COOPERATIVE EXTENSION OFFICES

NEVADA ASCS OFFICES

**CENTRAL AREA**

Churchill County  
111 Sheckler Road  
Fallon, NV 89406  
(702) 423-5121

Humboldt County  
Fairgrounds  
Winnemucca, NV 89445  
(702) 623-6304

Lyon County  
P.O. Box 811  
26 Nevin Way  
Yerington, NV 89447  
(702) 463-3341 Ext. 236

Pershing County  
P.O. Box 239  
810 6th Street  
Lovelock, NV 89419  
(702) 273-2923

**SOUTHERN AREA**  
Clark County  
S. T. & P. Building, Ste. 207  
953 East Sahara  
Las Vegas, NV 89104  
(702) 731-3130

East Clark County  
P.O. Box 126  
Highway 169  
Logandale, NV 89021  
(702) 397-2604

Esmeralda / Northern Nye County  
P.O. Box 231  
Military Circle, Building 107  
Tonopah, NV 89049  
(702) 482-6794

Southern Nye County  
P.O. Box 1090  
Calvada Blvd. & Dandelion St.  
Pahrump, NV 89041  
(702) 727-5532

Lincoln County  
P.O. Box 68  
360 Lincoln Street  
Caliente, NV 89008  
(702) 726-3101

**WESTERN AREA**

Carson City / Storey County  
P.O. Box 662  
675 Fairview Drive, Ste. 229  
Carson City, NV 89702  
(702) 887-2252

Douglas County  
P.O. Box 338  
Hinden, NV 89423  
1329 Waterloo Lane  
Gardnerville, NV 89410  
(702) 782-9960

Washoe County  
P.O. Box 11130  
1001 E. 9th  
Reno, NV 89520  
(702) 328-2650

Washoe County / Incline Village Branch  
P.O. Box 8208  
865 Tahoe Blvd. Ste. 204  
Incline Village, NV 89450  
(702) 832-4150

**NORTHEASTERN AREA**

Elko County  
569 Court Street  
Elko, NV 89801  
(702) 738-7291

Eureka County  
P.O. Box 613  
Bateman & Monroe  
Eureka, NV 89316  
(702) 237-5326

Lander County  
125-04 Carson Rd #153-8  
Smith Plaza  
Battle Mountain, NV 89820  
(702) 635-5565

White Pine County  
P.O. Box 210  
10th & Campton  
Ely, NV 89301  
(702) 289-4459

Caliente ASCS Office  
360 Lincoln Street  
P.O. Box 8  
Caliente, NV 89008-0008  
(702) 726-3101  
(Serves Lincoln & White Pine Counties)

Elko ASCS Office  
2002 Idaho Street  
Elko, NV 89801-2627  
(702) 738-6445  
(Serves Elko & Eureka Counties)

Fallon ASCS Office  
111 Sheckler Road  
P.O. Box 1205  
Fallon, NV 89406  
(702) 423-5127  
(Serves Churchill, Storey & Washoe Cos)

Las Vegas ASCS Office  
3101 W. Charleston Blvd., Ste. A  
Las Vegas, NV 89102  
(702) 388-6311  
(Serves Clark & Nye Counties)

Hinden ASCS Office  
1694 County Road  
P.O. Box 1329  
Hinden, NV 89423-1329  
(702) 883-2623  
(Serves Douglas County and Carson City)

Pershing County ASCS Office  
Community Center Building  
810 Sixth Street  
P.O. Box 1070  
Lovelock, NV 89419-1070  
(702) 273-2922  
(Serves Pershing County)

Winnemucca ASCS Office  
1200 Winnemucca Blvd. East  
Winnemucca, NV 89445-2920  
(702) 623-5025  
(Serves Humboldt & Lander Counties)

Yerington ASCS Office  
28 N. Main Street  
P.O. Box C  
Yerington, NV 89447-0803  
(702) 463-2855  
(Serves Lyon, Esmeralda & Mineral Cos.)



