



Montana Wheat Varieties 2011

Cooperating with the Montana Department of Agriculture
10 W 15th Street, Suite 3100 · Helena, MT 59626

Released: July 11, 2011

WINTER WHEAT

Montana planted 2.3 million acres of winter wheat in 2011, up from 2.05 million acres planted in 2010. Montana is ranked fifth for winter wheat planted acres in the United States, according to the USDA National Agricultural Statistics Service, Montana Field Office. The top four varieties listed below account for over fifty-nine percent of the total winter wheat planted in Montana for 2011.

Genou is the top winter wheat variety planted in Montana for the fifth year in a row. Farmers planted 658,100 acres of the variety, which accounts for 28.6 percent of the total winter wheat acreage. Genou, released by Montana State University in 2004, is a solid-stem hard red winter wheat with enhanced yield potential and cold tolerance compared to Rampart. Test weight, maturity, height, and protein qualities are similar to Rampart and Vanguard.

Yellowstone is the second most common winter wheat variety for 2011. It accounts for 17.0 percent of the state's planted acreage with 391,500 acres seeded. Yellowstone, a hard red winter wheat developed by the Montana Agricultural Experiment Station became available in 2005. The variety is high yielding with medium test weight, maturity, height, and protein. It has excellent baking and good noodle quality. Yellowstone is moderately resistant to dwarf smut and stripe rust but is susceptible to stem rust.

CDC Falcon is the third leading winter wheat variety planted in Montana in 2011. A total of 185,000 acres were planted, or 8.1 percent of the total winter wheat acres planted. CDC Falcon is a semi-dwarf, hard red winter wheat developed by the Crop Development Center in Saskatoon, Saskatchewan and was registered in 1998. It is a high yielding wheat with a short strong straw, good winter-hardiness, and a resistance to stem and leaf rust. This variety has shown average to above average yields on dryland and good performance for irrigated fields.

Rampart is the fourth most common winter variety planted throughout Montana in 2011. A total of 127,400 acres were planted, or 5.5 percent of the state's total acreage. Rampart is a hard red winter wheat developed by the Montana Agricultural Experiment Station and released in 1996. It is an awned, red-chaffed, solid-stemmed variety. Kernels are hard red, with a mid-sized germ. Rampart is resistant to the wheat stem sawfly and to prevalent races of stem rust. It is susceptible to stripe rust, leaf rust, dwarf smut, and the Russian wheat aphid. Rampart has excellent milling and baking qualities.

SPRING WHEAT

In 2011, there were 3.0 million acres of spring wheat planted, up from 2.85 million acres in 2010. Montana remains the second largest spring wheat producer in the United States, according to the USDA National Agricultural Statistics Service, Montana Field Office. The top four spring wheat varieties account for over fifty-nine percent of all Montana's spring wheat acreage.

Vida became the leading spring wheat variety planted for 2011. Montana producers planted 679,600 acres of Vida this year, accounting for 22.6 percent of the total acres planted. Vida was derived from a cross of Scholar and Reeder in 1998 by the Montana Agricultural Experiment Station and released in 2005. It is a high yielding hard red spring with moderate resistance to leaf and stripe rust. Vida is a semi-dwarf with white glumes and awns, kernels are red ovate with rounded cheeks. Good milling and baking characteristics have made Vida a popular variety each year.

Choteau dropped to the second most common spring wheat variety in 2011 with 544,400 acres or 18.1 percent of Montana's spring wheat acreage. Choteau was developed by the Montana Agricultural Experiment Station in 2003. A semi-dwarf hard red spring wheat with solid stem prevents sawfly. The spike is lax and tapered with white awns and glumes. Kernels are a red ovate with a medium crease and brush. Choteau is resistant to the prevalent stem and tolerant to the Hessian fly. Yields are similar to McNeal in Montana.

Reeder is the third most common spring wheat variety planted this year with 343,200 acres planted or 11.4 percent of spring wheat in Montana. Reeder was developed by the North Dakota Agricultural Experiment Station, released in 1999. It is an awned, semi-dwarf, hard red spring wheat. Reeder is resistant to upper Midwest stem and leaf rust. It was developed by crossing a relative of Stoa and germplasm from Brazil. Its stay-green trait allows for a longer head-filling period and in turn higher yield.

Corbin is ranked fourth with 223,800 acres seeded or 7.4 percent of the total spring wheat acres planted. Corbin was developed and released by WestBred LLC, Bozeman, Montana in 2006. It came from a cross between Border and Conan. The line of Corbin is best fitted to the sawfly areas in Montana. The stem and leaves have a slight waxy coating and the chaff is white. It is a semi-dwarf with a resistance to strip rust. Milling and baking quality is acceptable for the market class being grown in Montana.



DURUM WHEAT

Montana producers planted 480,000 acres of durum wheat in 2011, down from the 540,000 acres planted in 2010. Behind North Dakota, Montana ranks second in the U.S. for durum acres planted in the United States, according to the USDA National Agricultural Statistics Service, Montana Field Office. The top four varieties, listed below, account for nearly 64 percent of the total durum wheat planted in Montana during 2011.

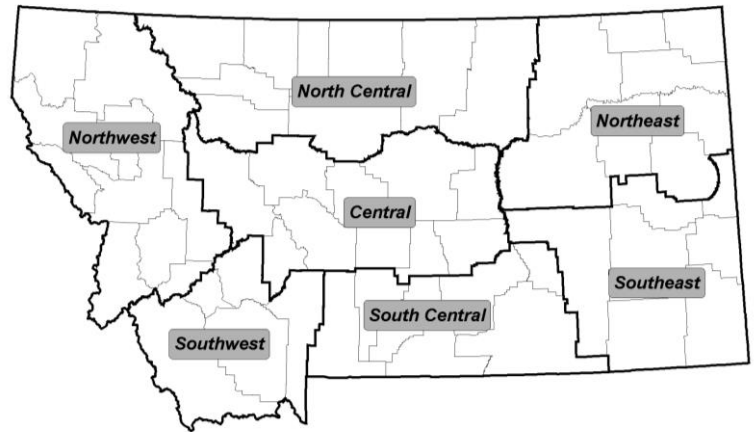
Mountrail has been the leading durum variety planted in the state for the last eight years in Montana. It was seeded on 130,200 acres or 27.1 percent of Montana's total durum planted acreage. Mountrail is a cross of D8479 and Renville, released by the North Dakota Agricultural Experiment Station in November 1998. This variety is medium height, late maturing and stiff-strawed. It is resistant to both leaf and stem rusts. Mountrail has an above average yield, an average test weight, medium to large kernels, and average protein. It is also known for having a high semolina extract with strong gluten.

Strongfield is the second most common durum wheat variety planted in 2011. There were 71,100 acres seeded in the state, accounting for 14.8 percent of Montana's planted acreage. Strongfield was released by Ag Canada in 2004. It is medium in height and maturity. Strongfield has good resistance to leaf and stem rusts but only moderately resistant to common bunt. The variety exhibits good end use qualities by having high protein, low grain cadmium concentration, high yellow pigment, and a moderately strong gluten content.

Divide in 2011 was third in the state with 57,000 acres planted throughout Montana. It accounts for 11.9 percent of the total durum acres planted. Divide was developed by the North Dakota Agricultural Experiment Station in cooperation with USDA-ARS and released on June 1, 2005. It has high grain yield potential, medium height, strong straw strength, medium maturity and excellent overall quality. Divide is rated as moderately resistant to scab and does provide slightly enhanced protection against scab relative to other durum varieties.

Alzada is ranked as the fourth most common durum variety with 47,200 acres planted in 2011, or 9.8 percent of Montana's total acres. Alzada was developed by WestBred, LLC in Bozeman, Montana and first released for commercial planting in 2004. The variety has competitive yields along with excellent straw strength and good sawfly tolerance. Alzada has a high test weight, protein content, and demonstrates good scores for semolina color and gluten strength.

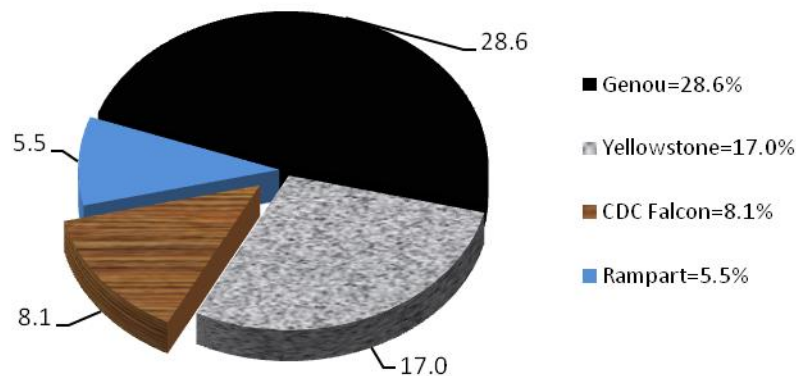
Montana's Agricultural Districts



Winter Wheat: 2011 Seeded Acreage and Percent of Total Seeded by Districts

Variety	Northwest		North Central		Northeast		Central		Southwest		South Central		Southeast		State Total	
	(000)	%	(000)	%	(000)	%	(000)	%	(000)	%	(000)	%	(000)	%	(000)	%
Genou	--	--	594.8	43.1	3.2	1.6	40.4	10.4	4.9	14.7	13.8	7.1	1.0	1.2	658.1	28.6
Yellowstone	0.6	3.1	155.9	11.3	84.4	42.2	67.9	17.5	10.6	32.1	41.1	21.1	31.0	36.1	391.5	17.0
CDC Falcon	0.6	3.2	127.0	9.2	5.8	2.9	41.9	10.8	3.6	10.9	5.9	3.0	0.2	0.2	185.0	8.1
Rampart	--	--	121.4	8.8	--	--	3.9	1.0	--	--	2.1	1.1	--	--	127.4	5.5
Ledger	--	--	95.2	6.9	--	--	22.1	5.7	--	--	1.8	0.9	--	--	119.1	5.2
AP503 CL2	0.7	3.8	15.2	1.1	0.2	.1	31.4	8.1	1.9	5.8	53.8	27.6	1.6	1.9	104.8	4.6
Jerry	0.6	3.6	6.9	0.5	47.4	23.7	14.0	3.6	--	--	--	--	9.0	10.5	77.9	3.4
Pryor	--	--	24.8	1.8	--	--	24.8	6.4	2.4	7.2	5.1	2.6	4.6	5.4	61.7	2.7
Jagalene	1.2	6.8	9.7	0.7	--	--	34.1	8.8	--	--	10.9	5.6	5.7	6.6	61.6	2.7
Morgan	--	--	38.6	2.8	14.8	7.4	--	--	--	--	0.4	0.2	--	--	53.8	2.3
Norris	0.3	1.9	38.6	2.8	--	--	1.9	0.5	1.3	3.8	8.6	4.4	--	--	50.7	2.2
Hawken	--	--	9.7	0.7	2.8	1.4	34.5	8.9	--	--	--	--	0.6	0.7	47.6	2.1
Neeley	--	--	8.3	0.6	0.4	0.2	16.3	4.2	1.7	5.0	8.0	4.1	1.6	1.9	36.3	1.6
Vanguard	--	--	16.6	1.2	--	--	13.2	3.4	--	--	--	--	--	--	29.8	1.3
Carter	--	--	27.6	2.0	--	--	0.4	0.1	--	--	--	--	--	--	28.0	1.2
Tiber	--	--	4.1	0.3	2.8	1.4	--	--	0.6	1.8	8.4	4.3	4.0	4.6	19.9	0.9
Willow Creek	0.6	3.2	2.8	0.2	6.6	3.3	5.4	1.4	--	--	0.8	0.4	0.6	0.7	16.8	0.7
Bynum	--	--	9.7	0.7	--	--	0.4	0.1	--	--	1.0	0.5	--	--	11.1	0.5
Rocky	--	--	9.7	0.7	--	--	--	--	--	--	--	--	--	--	9.7	0.4
Redwin	--	--	--	--	3.2	1.6	2.3	0.6	--	--	2.3	1.2	1.5	1.7	9.3	0.4
Promontory	2.1	11.6	--	--	--	--	1.9	0.5	--	--	5.1	2.6	--	--	9.1	0.4
Winalta	--	--	2.8	0.2	2.6	1.3	--	--	--	--	--	--	2.1	2.4	7.5	0.3
Carlisle	0.1	0.8	5.5	0.4	--	--	--	--	--	--	--	--	--	--	5.6	0.2
Other & Unknown	11.2	62.0	55.1	4.0	25.8	12.9	31.2	8.0	6.0	18.7	25.9	13.3	22.5	26.1	177.7	7.7
All Varieties	18.0	100.0	1,380.0	100.0	200.0	100.0	388.0	100.0	33.0	100.0	195.0	100.0	86.0	100.0	2,300.0	100.0

2011 Top Four Winter Wheat Varieties Percent of Total Acres



Winter Wheat: Percent of Total Seeded Acreage 2005-2011 & Seeded Acreage 2010-2011

Variety	Percent of Total Seeded Acreage							Seeded Acres (000)	
	2005	2006	2007	2008	2009	2010 1/	2011	2010 1/	2011
Genou	--	2.2	15.8	19.5	24.4	30.2	28.6	618.8	658.1
Yellowstone	--	--	3.7	8.2	12.8	18.1	17.0	370.1	391.5
CDC Falcon	3.9	10.9	13.3	13.2	9.0	7.4	8.1	150.7	185.0
Rampart	24.8	19.2	9.6	7.4	5.6	7.4	5.5	151.4	127.4
Ledger	--	2.4	5.8	6.8	6.5	4.2	5.2	85.0	119.1
AP503 CL2	--	--	--	--	--	1.2	4.6	25.1	104.8
Jerry	--	--	0.7	2.9	3.6	1.7	3.4	34.3	77.9
Pryor	1.7	3.3	4.6	3.5	2.3	2.9	2.7	59.7	61.7
Jagalene	1.5	6.2	5.6	5.7	5.5	5.0	2.7	103.2	61.6
Morgan	7.4	7.1	5.3	4.6	4.6	2.5	2.3	51.9	53.8
Norris	--	--	--	0.5	0.9	2.5	2.2	52.1	50.7
Hawken	--	--	--	--	--	--	2.1	--	47.6
Neeley	12.6	9.3	7.8	4.2	2.2	2.4	1.6	50.2	36.3
Vanguard	6.8	2.9	1.4	1.7	0.8	1.1	1.3	23.4	29.8
Carter	--	--	--	--	0.5	1.2	1.2	24.1	28.0
Tiber	10.0	7.1	5.0	5.6	4.0	2.2	0.9	45.0	19.9
Willow Creek	--	--	--	--	0.4	0.7	0.7	15.2	16.8
Bynum	--	--	--	--	0.5	0.4	0.5	7.2	11.1
Rocky	7.6	7.1	4.4	2.1	0.7	1.0	0.4	20.3	9.7
Redwin	2.5	1.7	1.4	1.0	1.5	0.5	0.4	11.0	9.3
Promontory	1.5	3.5	2.5	0.8	2.1	1.7	0.4	35.0	9.1
Winalta	1.4	1.0	0.8	0.4	0.4	0.3	0.3	6.2	7.5
Carlisle	--	--	--	0.6	0.6	0.3	0.2	6.3	5.6
Radiant	--	--	--	--	--	0.4	--	8.2	--
Other & Unknown	18.3	16.1	12.3	11.3	11.1	4.7	7.7	95.6	177.7
All Varieties	100.0	100.0	100.0	100.0	100.0	100.0	100.0	2,050.0	2,300.0

1/ Revised. --Data not published for the given year.

Winter Wheat: 2010 Seeded Acreage and Percent of Total Seeded by Districts 1/

Variety	Northwest		North Central		Northeast		Central		Southwest		South Central		Southeast		State Total	
	(000)	%	(000)	%	(000)	%	(000)	%	(000)	%	(000)	%	(000)	%	(000)	%
Genou	--	--	535.4	44.9	--	--	51.9	13.1	6.0	31.0	23.3	10.4	2.2	2.3	618.8	30.2
Yellowstone	0.9	7.5	143.1	12.0	27.1	24.4	88.8	22.4	7.9	40.9	68.8	30.7	33.5	35.4	370.1	18.1
Rampart	--	--	130.0	10.9	--	--	5.2	1.3	0.7	3.6	15.5	6.9	--	--	151.4	7.4
CDC Falcon	--	--	104.9	8.8	3.1	2.8	36.9	9.3	0.2	0.8	3.8	1.7	1.8	1.9	150.7	7.4
Jagalene	2.9	23.7	3.6	0.3	6.2	5.6	70.2	17.7	--	--	11.9	5.3	8.4	8.9	103.2	5.0
Ledger	--	--	59.6	5.0	--	--	25.4	6.4	--	--	--	--	--	--	85.0	4.2
Pryor	--	--	23.9	2.0	1.0	0.9	28.2	7.1	0.5	2.8	2.0	0.9	4.1	4.3	59.7	2.9
Norris	0.3	2.1	38.2	3.2	--	--	7.9	2.0	--	--	4.7	2.1	1.0	1.1	52.1	2.5
Morgan	--	--	37.0	3.1	10.3	9.3	2.8	0.7	--	--	--	--	1.8	1.9	51.9	2.5
Neeley	--	--	1.2	0.1	1.4	1.3	14.3	3.6	1.5	7.6	29.6	13.2	2.2	2.3	50.2	2.4
Tiber	--	--	6.0	0.5	5.2	4.7	7.5	1.9	0.9	4.5	16.8	7.5	8.6	9.1	45.0	2.2
Promontory	1.1	9.1	--	--	0.4	0.4	10.7	2.7	--	--	20.6	9.2	2.2	2.3	35.0	1.7
Jerry	--	--	--	--	25.5	23.0	2.0	0.5	--	--	--	--	6.8	7.2	34.3	1.7
AP503 CL2	--	--	2.4	0.2	--	--	12.7	3.2	--	--	8.5	3.8	1.5	1.6	25.1	1.2
Carter	--	--	22.7	1.9	--	--	1.2	0.3	--	--	0.2	0.1	--	--	24.1	1.2
Vanguard	--	--	14.3	1.2	--	--	9.1	2.3	--	--	--	--	--	--	23.4	1.1
Rocky	--	--	20.3	1.7	--	--	--	--	--	--	--	--	--	--	20.3	1.0
Willow Creek	0.2	1.6	2.4	0.2	9.1	8.2	2.8	0.7	--	--	0.7	0.3	--	--	15.2	0.7
Redwin	--	--	2.4	0.2	1.3	1.2	0.8	0.2	0.6	3.1	1.3	0.6	4.6	4.9	11.0	0.5
Radiant	--	--	6.0	0.5	1.4	1.3	--	--	--	--	--	--	0.8	0.8	8.2	0.4
Bynum	--	--	1.2	0.1	--	--	4.0	1.0	--	--	2.0	0.9	--	--	7.2	0.4
Winalta	--	--	--	--	5.7	5.1	--	--	--	--	--	--	0.5	0.5	6.2	0.3
Carlisle	1.5	12.1	4.8	0.4	--	--	--	--	--	--	--	--	--	--	6.3	0.3
Other & Unknown	5.3	43.9	33.1	2.8	13.3	11.8	14.1	3.6	1.0	5.7	14.3	6.4	14.5	15.5	95.6	4.7
All Varieties	12.2	100.0	1192.5	100.0	111.0	100.0	396.5	100.0	19.3	100.0	224.0	100.0	94.5	100.0	2050.0	100.0

1/ Revised.

Spring Wheat: 2011 Seeded Acreage and Percent of Total Seeded by Districts

Variety	Northwest		North Central		Northeast		Central		Southwest		South Central		Southeast		State Total	
	(000)	%	(000)	%	(000)	%	(000)	%	(000)	%	(000)	%	(000)	%	(000)	%
Vida	0.4	1.1	235.8	19.9	395.0	29.7	32.2	16.5	0.8	1.3	6.9	7.7	8.5	8.1	679.6	22.6
Choteau	0.1	0.3	311.7	26.3	174.2	13.1	23.0	11.8	7.2	12.0	11.3	12.5	16.9	16.1	544.4	18.1
Reeder	0.3	0.9	2.4	0.2	308.6	23.2	14.4	7.4	--	--	6.4	7.1	11.1	10.6	343.2	11.4
Corbin	--	--	215.7	18.2	5.3	0.4	1.8	0.9	--	--	1.0	1.1	--	--	223.8	7.4
McNeal	--	--	28.4	2.4	122.4	9.2	14.8	7.6	1.7	2.9	3.6	4.0	3.3	3.1	174.2	5.8
ONeal	0.2	0.7	110.2	9.3	16.0	1.2	34.1	17.5	0.7	1.2	2.1	2.3	2.3	2.2	165.6	5.5
Fortuna	--	--	71.1	6.0	--	--	21.6	11.1	--	--	5.7	6.3	--	--	98.4	3.3
Conan	--	--	83.0	7.0	8.0	0.6	--	--	--	--	0.5	0.5	--	--	91.5	3.1
AC Lillian	--	--	11.9	1.0	37.2	2.8	--	--	--	--	1.4	1.5	--	--	50.5	1.7
Kelby	3.8	10.8	--	--	22.6	1.7	5.1	2.6	0.7	1.1	1.5	1.7	4.3	4.1	38.0	1.3
Amidon	--	--	--	--	30.6	2.3	--	--	--	--	--	--	0.3	0.3	30.9	1.0
Steele	--	--	--	--	5.3	0.4	0.2	0.1	--	--	--	--	23.2	22.1	28.7	0.9
Hank	2.5	7.0	--	--	8.0	0.6	11.1	5.7	3.1	5.2	3.7	4.1	--	--	28.4	0.9
Solana	10.4	29.7	--	--	--	--	0.2	0.1	2.0	3.4	9.3	10.3	2.8	2.7	24.7	0.8
Ernest	--	--	19.0	1.6	5.3	0.4	--	--	--	--	--	--	--	--	24.3	0.8
Kuntz	2.1	6.0	3.6	0.3	8.0	0.6	6.2	3.2	3.7	6.1	--	--	--	--	23.6	0.8
WB Gunnison	--	--	21.3	1.8	--	--	--	--	--	--	--	--	--	--	21.3	0.7
Westbred 936	0.2	0.5	4.7	0.4	--	--	5.5	2.8	9.3	15.5	0.6	0.7	--	--	20.3	0.7
Glenn	--	--	--	--	18.6	1.4	--	--	1.4	2.3	--	--	--	--	20.0	0.7
Brennan	0.3	0.8	--	--	14.6	1.1	0.2	0.1	0.8	1.3	1.4	1.4	--	--	17.2	0.6
Jedd	0.2	0.6	7.1	0.6	--	--	4.3	2.2	--	--	5.4	6.0	--	--	17.0	0.6
Mott	1.1	3.0	3.6	0.3	12.0	0.9	--	--	--	--	--	--	--	--	16.7	0.6
Freyr	--	--	2.4	0.2	8.0	0.6	--	--	1.4	2.4	4.1	4.6	0.6	0.6	16.5	0.6
Scholar	--	--	--	--	13.3	1.0	0.6	0.3	--	--	--	--	0.3	0.3	14.2	0.5
Other & Unknown	13.4	38.6	53.1	4.5	117.0	8.8	19.7	10.1	27.2	45.3	25.2	28.2	31.4	29.8	287.0	9.6
All Varieties	35.0	100.0	1,185.0	100.0	1,330.0	100.0	195.0	100.0	60.0	100.0	90.0	100.0	105.0	100.0	3,000.0	100.0

Spring Wheat: Percent of Total Seeded Acreage 2005-2011 & Seeded Acreage 2010-2011

Variety	Percent of Total Seeded Acreage							Seeded Acres (000)	
	2005	2006	2007	2008	2009	2010 1/	2011	2010 1/	2011
Vida	--	--	--	--	5.0	12.8	22.6	365.9	679.6
Choteau	1.5	16.5	22.4	21.6	22.7	23.0	18.1	656.7	544.4
Reeder	26.4	27.6	28.1	25.0	24.0	16.5	11.4	471.1	343.2
Corbin	--	--	2.2	3.4	4.0	5.6	7.4	160.5	223.8
McNeal	29.0	21.3	14.9	12.1	10.6	8.4	5.8	238.9	174.2
ONeal	--	--	--	--	1.4	4.2	5.5	118.1	165.6
Fortuna	5.7	4.1	4.3	4.1	2.5	3.8	3.3	109.2	98.4
Conan	7.1	6.8	5.0	2.9	3.2	2.9	3.1	82.8	91.5
AC Lillian	--	--	--	2.9	1.6	2.5	1.7	71.9	50.5
Kelby	--	--	--	1.0	1.0	1.1	1.3	32.1	38.0
Amidon	2.5	1.8	1.7	1.7	1.0	0.5	1.0	14.4	30.9
Steele	--	--	--	--	0.5	0.4	0.9	11.7	28.7
Hank	2.2	2.3	1.9	2.6	1.7	1.5	0.9	41.6	28.4
Solano	--	--	--	--	0.8	0.6	0.8	15.7	24.7
Ernest	10.7	5.5	3.1	2.3	1.5	1.6	0.8	47.0	24.3
Kuntz	--	--	--	--	1.1	0.8	0.8	23.3	23.6
WB Gunnison	--	--	--	--	--	--	0.7	--	21.3
Westbred 936	1.0	0.7	0.9	0.8	1.3	0.7	0.7	18.5	20.3
Glenn	--	--	0.6	--	--	0.6	0.7	16.0	20.0
Brennan	--	--	--	--	--	--	0.6	--	17.2
Jedd	--	--	--	--	0.8	0.8	0.6	22.6	17.0
Mott	--	--	--	--	--	--	0.6	--	16.7
Freyr	--	--	0.7	0.6	1.0	0.9	0.6	24.1	16.5
Scholar	1.6	0.4	1.2	0.7	1.2	0.4	0.5	10.7	14.2
Outlook	--	0.5	0.6	1.5	--	0.6	--	17.8	--
AP 604 CL	--	--	--	--	0.6	0.9	--	25.3	--
Alsen	--	0.3	--	--	--	0.4	--	10.9	--
Other & Unknown	12.3	12.2	12.4	16.8	12.5	8.5	9.6	243.2	287.0
All Varieties	100.0	100.0	100.0	100.0	100.0	100.0	100.0	2,850.0	3,000.0

1/ Revised. --Data not published for the given year.

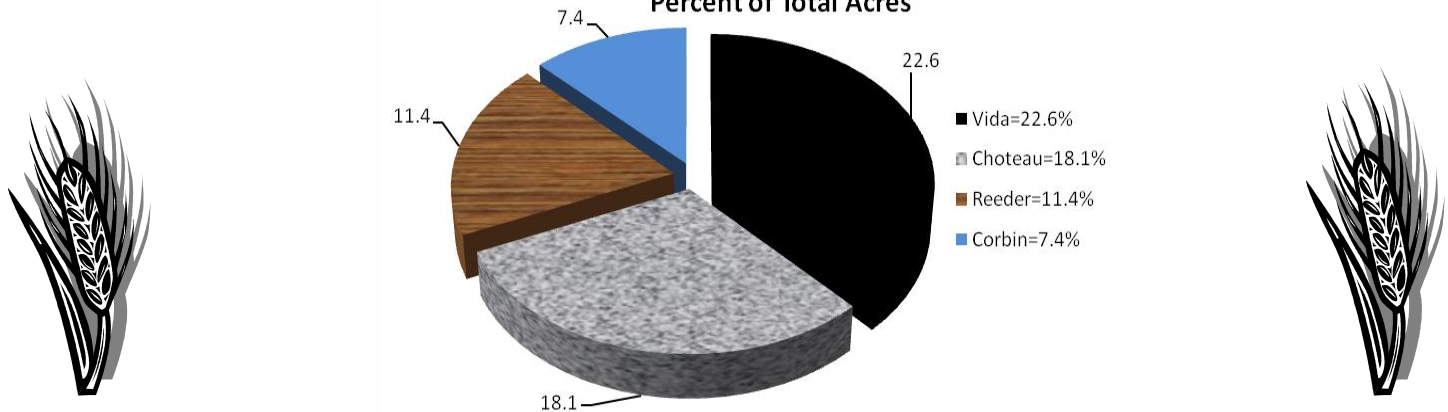


Spring Wheat: 2010 Seeded Acreage and Percent of Total Seeded by Districts 1/

Variety	Northwest		North Central		Northeast		Central		Southwest		South Central		Southeast		State Total	
	(000)	%	(000)	%	(000)	%	(000)	%	(000)	%	(000)	%	(000)	%	(000)	%
Choteau	0.1	0.4	366.6	34.2	230.5	17.7	36.5	17.8	5.4	9.4	11.5	18.5	6.1	4.9	656.7	23.0
Reeder	--	--	2.1	0.2	431.0	33.1	16.2	7.9	--	--	1.2	2.0	20.6	16.5	471.1	16.5
Vida	--	--	110.4	10.3	221.3	17.0	16.8	8.2	--	--	3.4	5.5	14.0	11.2	365.9	12.8
McNeal	--	--	41.8	3.9	135.4	10.4	21.5	10.5	3.2	5.7	7.6	12.3	29.4	23.5	238.9	8.4
Corbin	--	--	159.7	14.9	--	--	0.6	0.3	--	--	0.2	0.3	--	--	160.5	5.6
ONeal	--	--	83.6	7.8	16.9	1.3	15.2	7.4	0.1	0.2	1.9	3.1	0.4	0.3	118.1	4.2
Fortuna	--	--	91.1	8.5	--	--	9.4	4.6	--	--	8.7	14.1	--	--	109.2	3.8
Conan	--	--	75.0	7.0	7.8	0.6	--	--	--	--	--	--	--	--	82.8	2.9
AC Lilian	--	--	6.4	0.6	65.1	5.0	0.4	0.2	--	--	--	--	--	--	71.9	2.5
Ernest	--	--	39.7	3.7	5.2	0.4	0.8	0.4	--	--	0.2	0.3	1.1	0.9	47.0	1.6
Hank	5.9	22.0	1.1	0.1	5.2	0.4	25.0	12.2	1.7	3.0	2.7	4.3	--	--	41.6	1.5
Kelby	1.5	5.5	3.2	0.3	11.7	0.9	9.4	4.6	4.6	8.0	1.4	2.3	0.3	0.2	32.1	1.1
AP 604 CL	--	--	10.7	1.0	11.7	0.9	2.9	1.4	--	--	--	--	--	--	25.3	0.9
Freyr	0.1	0.4	1.1	0.1	5.2	0.4	--	--	5.5	9.6	0.2	0.3	12.0	9.6	24.1	0.9
Kuntz	7.1	26.3	3.2	0.3	3.9	0.3	6.2	3.0	2.6	4.5	0.3	0.5	--	--	23.3	0.8
Jedd	0.3	1.2	13.9	1.3	--	--	4.7	2.3	0.6	1.0	3.1	5.0	--	--	22.6	0.8
Westbred 936	--	--	2.1	0.2	--	--	5.3	2.6	11.1	19.4	--	--	--	--	18.5	0.7
Outlook	--	--	4.3	0.4	9.1	0.7	3.7	1.8	--	--	0.7	1.1	--	--	17.8	0.6
Glenn	--	--	--	--	3.9	0.3	--	--	8.0	14.0	--	--	4.1	3.3	16.0	0.6
Solano	6.4	23.8	--	--	3.9	0.3	1.0	0.5	0.2	0.3	3.8	6.2	0.4	0.3	15.7	0.6
Amidon	--	--	1.1	0.1	13.0	1.0	--	--	--	--	--	--	0.3	0.2	14.4	0.5
Steele	--	--	--	--	5.2	0.4	--	--	--	--	--	--	6.5	5.2	11.7	0.4
Alsen	--	--	--	--	10.4	0.8	--	--	--	--	--	--	0.5	0.4	10.9	0.4
Scholar	--	--	7.5	0.7	2.6	0.2	--	--	--	--	--	--	0.6	0.5	10.7	0.4
Other & Unknown	5.6	20.4	47.4	4.4	103.0	7.9	29.4	14.3	14.0	24.9	15.1	24.2	28.7	23.0	243.2	8.5
All Varieties	27.0	100.0	1072.0	100.0	1,302.0	100.0	205.0	100.0	57.0	100.0	62.0	100.0	125.0	100.0	2,850.0	100.0

1/ Revised.

**2011 Top Four Spring Wheat Varieties
Percent of Total Acres**



Durum Wheat: 2011 Seeded Acreage and Percent of Total Seeded by Districts

Variety	North Central		Northeast		Other Districts		State Total	
	(000)	%	(000)	%	(000)	%	(000)	%
Mountrail	--	--	130.2	31.3	--	--	130.2	27.1
Strongfield	6.8	13.5	63.2	15.2	1.1	7.5	71.1	14.8
Divide	1.3	2.6	55.7	13.4	--	--	57.0	11.9
Alzada	36.0	71.9	10.4	2.5	0.8	5.7	47.2	9.8
Lebsock	--	--	23.7	5.7	--	--	23.7	4.9
Kyle	1.0	2.0	22.5	5.4	--	--	23.5	4.9
Alkabo	--	--	22.0	5.3	--	--	22.0	4.6
Grenora	--	--	19.1	4.6	--	--	19.1	4.0
Westhope	--	--	10.0	2.4	--	--	10.0	2.1
Pierce	--	--	9.2	2.2	--	--	9.2	1.9
Dilse	--	--	2.1	0.5	5.0	35.8	7.1	1.5
Vic	--	--	5.8	1.4	--	--	5.8	1.2
Ward	--	--	3.7	0.9	--	--	3.7	0.8
AC Morse	2.7	5.3	--	--	--	--	2.7	0.6
Monroe	--	--	1.7	0.4	--	--	1.7	0.3
Other & Unknown	2.2	4.7	36.7	8.8	7.1	51.0	46.0	9.6
All Varieties	50.0	100.0	416.0	100.0	14.0	100.0	480.0	100.0



Durum Wheat: Percent of Total Seeded Acreage 2005-2011 & Seeded Acreage 2010-2011

Variety	Percent of Total Seeded Acreage							Seeded Acres (000)	
	2005	2006	2007	2008	2009	2010 1/	2011	2010 1/	2011
Mountrail	52.9	52.6	44.8	40.8	34.6	25.2	27.1	136.2	130.2
Strongfield	--	--	1.2	8.6	7.4	13.4	14.8	72.4	71.1
Divide	--	--	0.7	4.0	5.5	10.1	11.9	54.7	57.0
Alzada	1.3	4.8	5.1	6.4	7.3	9.2	9.8	49.5	47.2
Lebsock	5.4	10.1	12.3	6.0	7.7	6.0	4.9	32.7	23.7
Kyle	21.4	15.7	15.4	14.2	8.7	8.3	4.9	44.8	23.5
Alkabo	--	--	--	1.5	4.6	4.6	4.6	24.8	22.0
Grenora	--	--	0.6	4.0	6.5	5.9	4.0	31.7	19.1
Westhope	--	--	--	--	--	--	2.1	--	10.0
Pierce	1.3	5.6	5.3	2.7	1.9	1.2	1.9	6.5	9.2
Dilse	--	0.8	2.8	0.8	0.6	3.0	1.5	16.3	7.1
Vic	0.9	0.9	0.4	--	--	0.5	1.2	2.6	5.8
Ward	1.7	2.3	1.5	--	0.6	--	0.8	--	3.7
AC Morse	--	--	--	0.3	0.9	--	0.6	--	2.7
Monroe	1.9	0.6	1.3	2.1	2.3	0.9	0.3	5.1	1.7
Cando	--	--	--	--	--	0.8	--	4.1	--
AC Avonlea	5.3	2.3	1.0	1.3	3.1	1.8	--	9.5	--
Maier	0.6	0.8	0.3	1.1	--	2.3	--	12.3	--
Other & Unknown	7.3	3.5	7.3	6.2	8.3	6.8	9.6	36.8	46.0
All Varieties	100.0	100.0	100.0	100.0	100.0	100.0	100.0	540.0	480.0

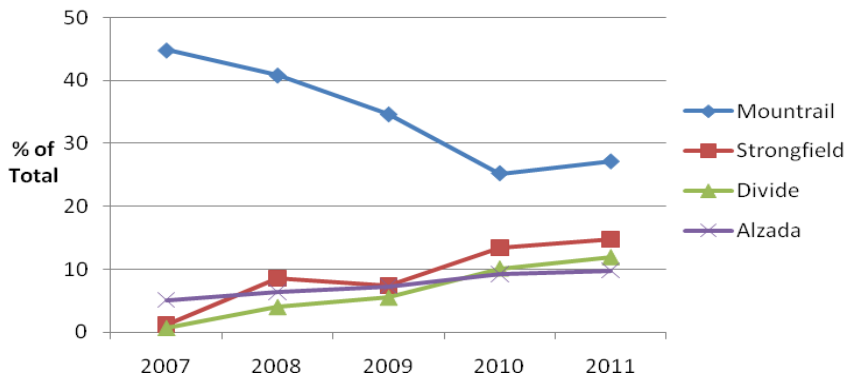
1/Revised

Durum Wheat: 2010 Seeded Acreage and Percent of Total Seeded by Districts 1/

Variety	Northeast		Other Districts		State Total	
	(000)	%	(000)	%	(000)	%
Mountrail	136.2	29.6	--	--	136.2	25.2
Strongfield	62.6	13.6	9.8	12.2	72.4	13.4
Divide	54.7	11.9	0.0	0.0	54.7	10.1
Alzada	7.8	1.7	41.7	52.1	49.5	9.2
Kyle	41.9	9.1	2.9	3.6	44.8	8.3
Lebsock	32.7	7.1	--	--	32.7	6.0
Grenora	31.3	6.8	0.4	0.5	31.7	5.9
Alkabo	24.8	5.4	--	--	24.8	4.6
Dilse	14.7	3.2	1.6	2.0	16.3	3.0
Maier	--	--	12.3	15.4	12.3	2.3
AC Avonlea	8.3	1.8	1.2	1.5	9.5	1.8
Piece	5.5	1.2	1.0	1.2	6.5	1.2
Monroe	5.1	1.1	--	--	5.1	0.9
Cando	4.1	0.9	--	--	4.1	0.8
Vic	--	--	2.6	3.2	2.6	0.5
Other & Unknown	30.3	6.6	6.5	8.3	36.8	6.8
All Varieties	460.0	100.0	80.0	100.0	540.0	100.0

1/ Revised

2011 Top Four Durum Varieties



Data compiled and summarized by the Montana Field Office of the National Agricultural Statistics Service, an agency of USDA, as a service provided for the Montana Wheat and Barley Committee.