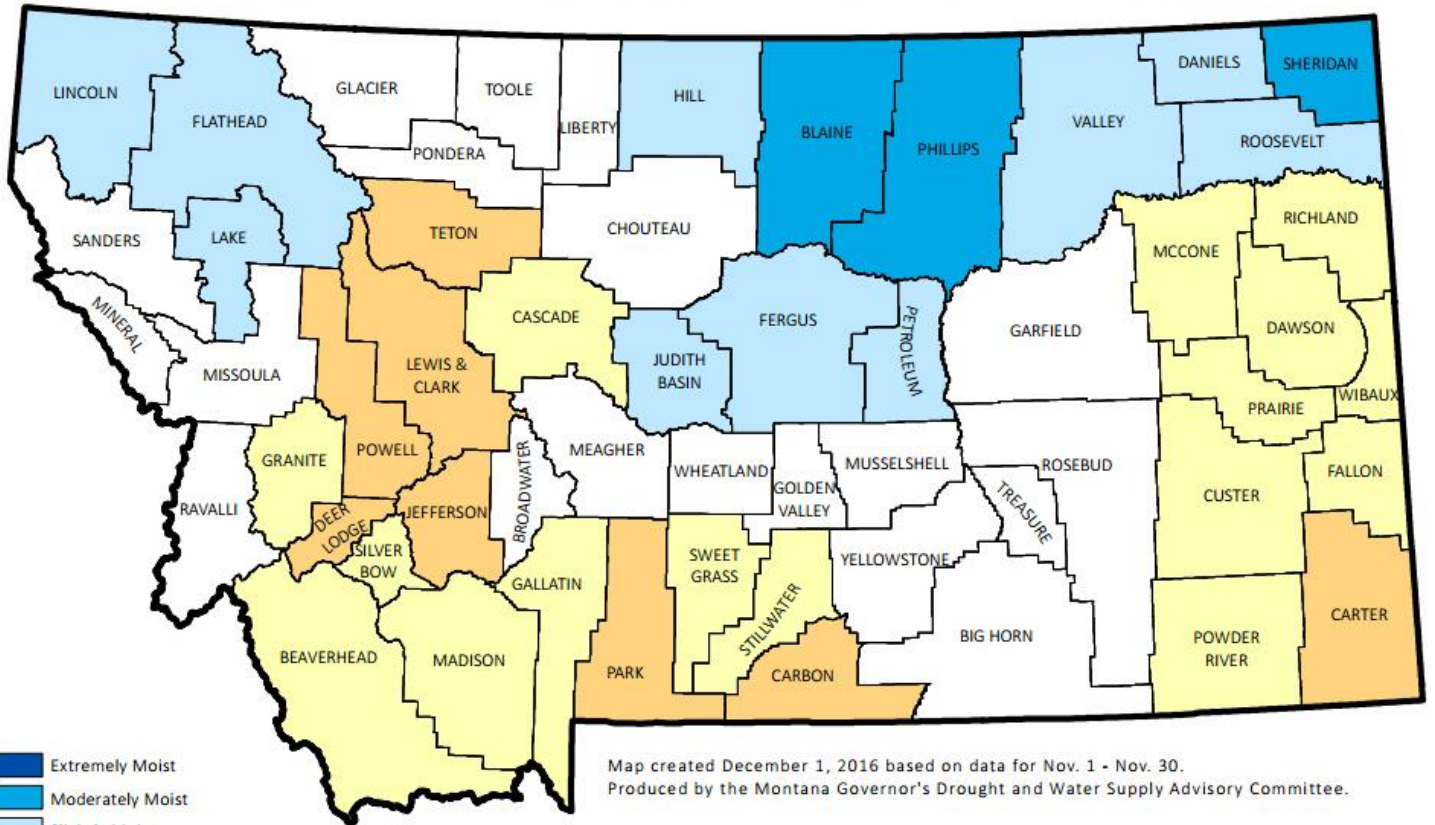


Weather Information for the Month Ending 12/31/2016

Station ID	Temperature				Precipitation December			Precipitation October 1 to date		
	High	Low	Avg	DFN	Total	DFN	% Nrm	Total	DFN	% Nrm
NORTHWEST										
Alberton	40	-11	20	-3	1.98	+0.82	170	6.43	+3.48	217
Corvallis	48	-16	21	-5	1.20	+0.46	162	3.35	+1.04	145
Creston	43	-24	18	-6	1.53	-0.05	96	7.84	+3.46	178
Deer Lodge	47	-35	16	-7	0.68	+0.31	183	1.72	+0.39	129
Hamilton	38	-16	19	-6	0.98	-0.16	85	3.59	+0.55	118
Heron	38	-11	23	-3	3.70	-0.74	83	15.91	+4.58	140
Kalispell	41	-20	18	-5	1.79	+0.15	109	7.25	+3.17	177
Libby	40	-7	23	+2	1.49	-1.44	50	8.91	+1.04	113
Missoula	41	-16	20	-3	1.57	+0.41	135	4.75	+1.80	161
Olney	35	-26	13	-6	1.30	-0.94	58	8.72	+2.63	143
Polson	41	-20	18	-9	1.60	+0.43	136	6.40	+3.01	188
Saint Ignatius	46	-20	22	-5	1.26	+0.19	117	3.95	+0.68	120
Seeley Lake	39	-23	18	-3	2.77	+0.23	109	6.18	-0.01	99
Superior	38	-8	23	-4	2.17	+0.55	133	8.55	+4.10	192
Thompson Falls	40	-8	24	-5	1.99	-0.75	72	9.19	+2.08	129
Yaak	36	-24	14	-10	2.00	-2.69	42	10.85	-1.76	86
NORTH CENTRAL										
Brady	43	-21	14	-8	0.82	+0.49	248	3.26	+1.70	208
Bynum	46	-27	15	-8	0.47	-0.05	90	1.90	+0.25	115
Chester	46	-31	12	-6	0.81	+0.41	202	3.42	+2.19	278
Chinook	45	-34	13	-3	0.06	-0.46	11	4.96	+3.34	306
Choteau	48	-24	15	-11	0.52	+0.30	236	2.20	+1.22	224
Cut Bank	46	-28	13	-8	0.04	-0.28	12	1.37	+0.17	114
Dunkirk	44	-35	9	-13	0.51	+0.09	121	2.54	+0.88	153
Fort Assiniboine	46	-31	14	-5	0.47	-0.05	90	4.04	+2.29	230
Fort Benton	51	-28	17	-8	0.30	-0.22	57	2.85	+1.00	154
Fort Belknap	44	-34	13	-4	0.16	-0.25	39	5.58	+4.24	416
Goldbutte	42	-20	15	-7	0.14	-0.28	33	2.44	+0.78	146
Havre	46	-31	15	-4	0.47	-0.05	90	4.29	+2.72	273
Heart Butte	38	-25	10	-12	0.41	-2.67	13	3.23	-4.98	39
Loma	47	-34	15	-7	0.43	-0.05	89	4.03	+2.30	232
Port of Morgan	38	-30	9	-6	0.22	+0.04	122	7.13	+6.06	666
Malta	44	-28	15	+0	0.17	-0.23	42	6.82	+5.15	408
Rudyard	46	-33	12	-8	0.37	+0.14	160	2.41	+1.44	248
Saco	42	-33	13	-2	0.16	-0.24	40	6.03	+4.41	372
Shelby	46	-29	13	-9	0.65	+0.20	144	2.56	+1.06	170
Turner	41	-28	11	-5	0.34	-0.01	97	5.01	+3.64	365
Zortman	44	-20	14	-8	0.65	+0.14	127	7.23	+5.57	435
NORTHEAST										
Bredette	36	-29	9	-6	0.78	+0.45	236	3.44	+2.04	245
Brockway	44	-31	13	-6	0.71	+0.44	262	1.40	+0.11	108
Circle	43	-28	13	-7	0.57	+0.13	129	1.82	+0.04	102
Culbertson	40	-27	9	-6	0.91	+0.55	252	2.55	+0.93	157
Glasgow	43	-29	13	-2	0.40	+0.02	105	3.15	+1.69	215
Glendive	41	-25	15	-4	0.87	+0.47	217	1.88	+0.01	100
Jordan	48	-38	14	-4	0.39	-0.13	75	3.28	+1.47	181
Nashua	41	-29	13	-7	0.35	+0.05	116	2.89	+1.52	210
Plentywood	36	-31	8	-5	1.18	+0.82	327	4.73	+3.26	321
Saint Marie	41	-24	12	-3	0.12	-0.26	31	2.58	+1.12	176
Savage	39	-26	13	-5	0.71	+0.33	186	1.66	-0.21	88
Scobey	35	-33	9	-3	0.25	-0.08	75	3.01	+1.71	231
Sidney	38	-26	13	-5	0.99	+0.51	206	1.82	-0.29	86
Wolf Point	44	-33	12	-4	0.32	-0.03	91	1.87	+0.44	130
CENTRAL										
Denton	43	-29	15	-5	0.42	-0.09	82	3.83	+1.95	203
Grass Range	46	-27	18	-7	0.53	-0.12	81	6.38	+4.22	295
Great Falls	43	-26	16	-8	0.89	+0.21	130	2.93	+0.75	134
Harlowton	42	-34	16	-9	0.87	+0.39	181	2.95	+1.19	167
Helena	48	-28	17	-4	1.28	+0.82	278	2.98	+1.39	187
Holter Dam	48	-23	19	-11	0.96	+0.61	274	2.65	+1.15	176
Judith Gap	44	-24	15	-7	1.06	+0.44	170	3.81	+1.96	205
Lewistown	43	-29	16	-7	0.33	-0.51	39	4.40	+1.78	167
Melstone	48	-38	15	-10	0.70	+0.09	114	2.70	+0.47	121
Millegan	38	-32	12	-9	1.10	+0.08	107	4.89	+1.90	163
Neihart	44	-26	16	-9	0.78	-0.24	76	3.28	-0.10	97
Roundup	44	-20	19	-7	1.16	+0.69	246	4.71	+2.90	260
Ryegate	43	-26	17	-8	1.30	+0.87	302	3.25	+1.50	185
Stanford	48	-22	16	-10	0.62	-0.07	89	3.75	+1.47	164
Townsend	44	-32	17	-8	0.54	+0.19	154	2.15	+0.80	159
Valentine	47	-34	14	-5	0.33	-0.22	60	5.35	+3.61	307
White Sulphur Springs	43	-26	17	-5	0.89	+0.41	185	3.44	+1.56	182
SOUTHWEST										
Boulder	48	-20	16	-7	0.50	+0.08	119	1.80	+0.21	113
Bozeman	45	-25	17	-7	1.36	+0.57	172	5.89	+2.42	169
Butte	42	-36	14	-4	0.44	-0.09	83	3.24	+1.33	169
Dillon	39	-25	16	-6	0.05	-0.18	21	2.54	+1.33	209
Divide	39	-25	15	-3	0.26	-0.26	50	3.06	+1.28	171
Ennis	44	-31	18	-7	0.45	-0.01	97	3.95	+1.88	190
Logan	44	-30	15	-4	0.44	-0.13	77	2.94	+0.47	119
Twin Bridges	39	-25	17	-6	0.22	-0.01	95	2.95	+1.77	250
West Yellowstone	31	-43	7	-5	3.78	+1.49	165	11.70	+6.06	207
Wisdom	35	-43	9	-6	0.82	+0.13	118	3.86	+1.62	172
SOUTH CENTRAL										
Big Timber	44	-29	20	-6	1.41	+0.72	204	4.88	+2.13	177
Billings	47	-19	19	-7	1.67	+0.99	245	5.56	+2.90	209
Busby	46	-31	13	-8	1.32	+0.65	197	5.00	+2.11	173
Gardiner	34	-15	16	-8	1.90	+1.45	422	5.75	+3.93	315
Hardin	47	-30	17	-8	1.58	+1.10	329	5.53	+3.20	237
Huntley	49	-30	15	-8	1.17	+0.55	188	4.50	+2.14	190
Hysham	48	-33	17	-6	1.17	+0.71	254	4.22	+2.01	190
Joliet	46	-27	14	-10	1.53	+0.88	235	4.98	+2.11	173
Livingston	45	-27	19	-8	0.95	+0.39	169	4.46	+1.99	180
Melville	45	-32	15	-8	1.39	+0.83	248	3.85	+1.42	158
Pompey's Pillar	47	-32	15	-8	0.79	+0.20	133	3.66	+1.19	148
Rapelje	44	-33	17	-9	0.84	+0.29	152	3.37	+0.91	136
Red Lodge	45	-26	16	-8	1.34	+0.21	118	5.80	+1.28	128
Wilsall	44	-27	17	-7	0.89	-0.01	98	4.49	+1.15	134
Yellowtail	46	-18	20	-11	1.59	+0.71	180	5.86	+2.19	159
SOUTHEAST										
Baker	43	-26	12	-7	0.78	+0.35	181	2.04	-0.19	91
Biddle	45	-25	15	-7	0.52	+0.01	101	1.21	-1.11	52
Brandenberg	45	-33	14	-10	1.08	+0.48	180	2.59	-0.04	98
Broadus	46	-27	15	-8	0.46	-0.05	90	1.61	-0.70	69
Colstrip	47	-25	17	-8	1.20	+0.72	250	3.12	+0.67	127
Ekalaka	42	-23	14	-8	0.54	-0.03	94	2.70	-0.21	92
Forsyth	47	-27	16	-7	1.36	+0.84	261	3.11	+0.71	129
Miles City	47	-27	15	-5	0.52	+0.06	113	1.49	-0.59	71
Mizpah	43	-34	10	-9	0.79	+0.42	213	2.19	+0.18	108
Plevna	42	-30	11	-8	0.74	+0.31	172	1.67	-0.56	74
Ridgeway	40	-27	12	-7	0.85	+0.40	188	2.87	+0.65	129
Terry	46	-28	13	-6	0.57	+0.33	237	1.73	+0.14	108
Wibaux	38	-22	11	-6	0.67	+0.42	268	2.17	+0.28	114

Montana Drought Status by County - December 1, 2016



- Extremely Moist
- Moderately Moist
- Slightly Moist
- Near Average
- Slightly Dry (D0)
- Moderately Dry (D1)
- Severely Dry (D2)
- Extremely Dry (D3)
- Exceptionally Dry (D4)

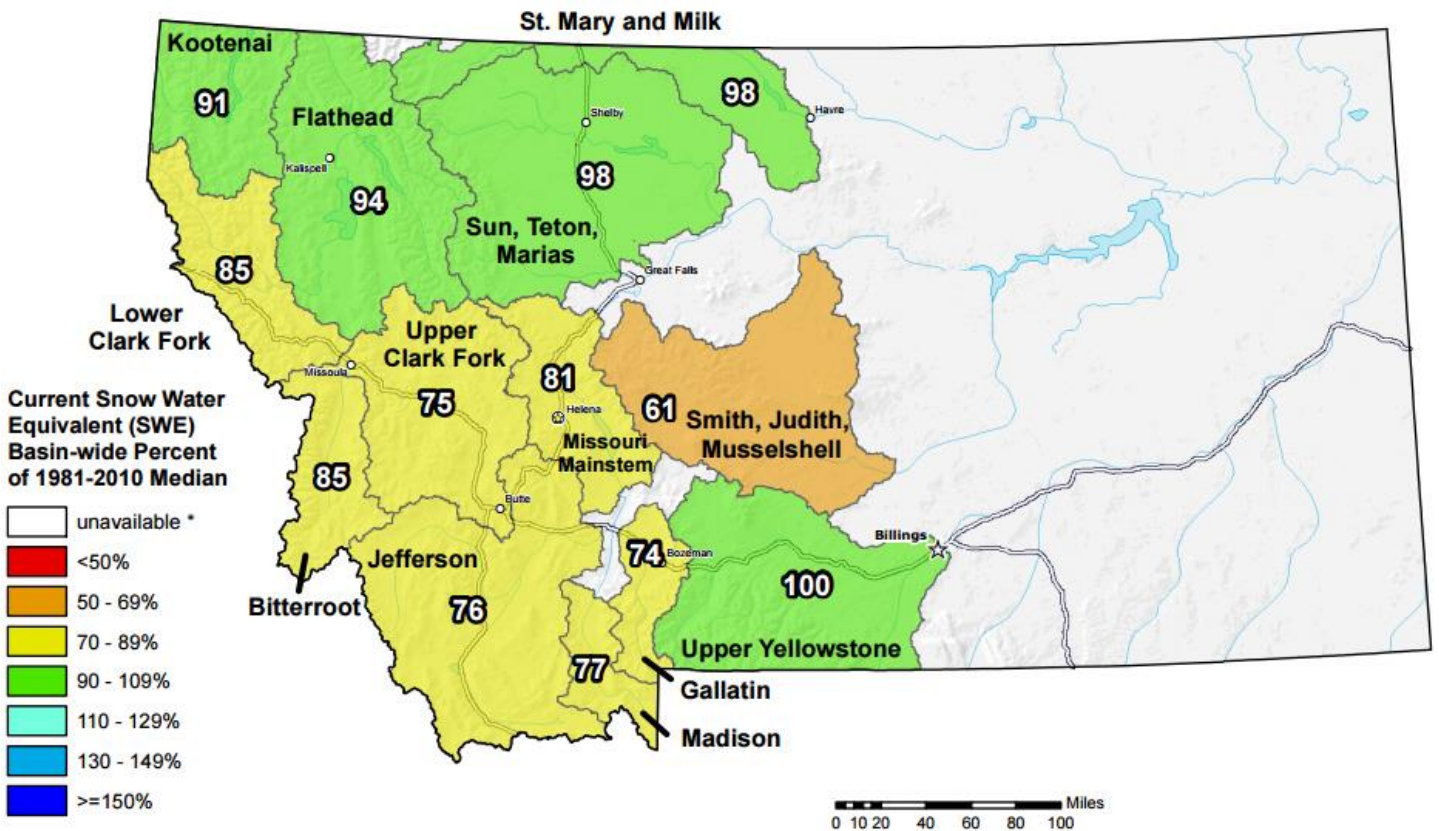


More information: <http://drought.mt.gov>

<http://nris.mt.gov/drought>

Montana SNOTEL Current Snow Water Equivalent (SWE) % of Normal

Jan 03, 2017



* Data unavailable at time of posting or measurement is not representative at this time of year

**Provisional Data
Subject to Revision**



The snow water equivalent percent of normal represents the current snow water equivalent found at selected SNOTEL sites in or near the basin compared to the average value for those sites on this day. Data based on the first reading of the day (typically 00:00).

Prepared by:
USDA/NRCS National Water and Climate Center
Portland, Oregon
<http://www.wcc.nrcs.usda.gov>