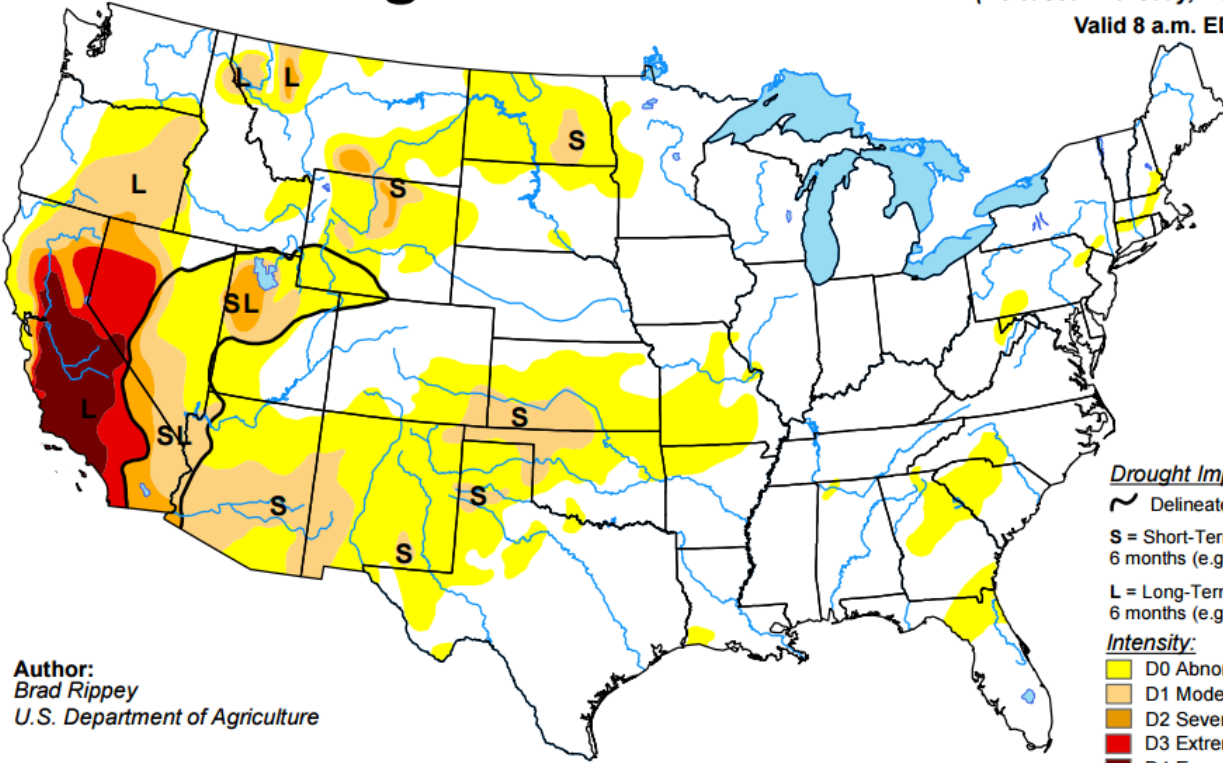


**Weather Information for the Week ending 04/03/2016**

Station ID	Temperature			GDDs		This Week		Precipitation			October 1 to Date		
	Hi	LOW	AVG	B50	DFN	Total	DFN	April 1 to Date			October 1 to Date		
								Total	DFN	%NRM	Total	DFN	%NRM
<b>NORTHWEST</b>													
Alberton	70	24	43	1	+1	0.09	-0.12	0.00	-0.09	0	9.59	+3.74	164
Corvallis	70	25	46	7	+7	0.04	-0.16	0.00	-0.09	0	4.51	+0.15	103
Creston	71	24	45	4	+4	0.06	-0.29	0.00	-0.15	0	8.07	-0.33	96
Deer Lodge	67	16	40	0	+0	0.08	+0.01	0.00	-0.03	0	2.80	+0.33	113
Hamilton	70	25	43	3	+3	0.07	-0.14	0.04	-0.05	44	7.20	+1.17	119
Heron	69	26	46	0	+0	0.13	-0.38	0.00	-0.21	0	24.85	+2.98	114
Kalispell	71	24	42	2	+2	0.13	-0.08	0.00	-0.09	0	7.64	-0.27	97
Libby	70	21	43	3	+3	0.00	-0.35	0.00	-0.15	0	17.29	+2.38	116
Missoula	71	24	44	2	+2	0.03	-0.18	0.01	-0.08	11	3.75	-2.10	64
Olney	67	21	38	0	+0	0.15	-0.13	0.00	-0.12	0	9.58	-2.38	80
Polson	69	25	44	2	+2	0.24	-0.03	0.00	-0.12	0	11.40	+4.82	173
Saint Ignatius	72	26	47	11	11	0.03	-0.25	0.01	-0.11	8	5.81	-0.55	91
Seeley Lake	69	18	42	3	+3	0.00	-0.21	0.00	-0.09	0	8.20	-3.45	70
Superior	71	27	46	6	+6	0.15	-0.13	0.00	-0.12	0	15.36	+6.89	181
Thompson Falls	68	27	47	3	+3	0.02	-0.33	0.00	-0.15	0	12.19	-1.49	89
Yaak	68	21	44	2	+2	0.00	-0.57	0.00	-0.25	0	14.74	-8.24	64
<b>NORTH CENTRAL</b>													
Brady	71	24	43	3	+3	0.13	-0.03	0.00	-0.06	0	2.59	-0.55	82
Bynum	68	29	42	0	+0	0.19	-0.02	0.06	-0.03	67	2.59	-0.82	76
Chester	72	20	42	3	+3	0.23	+0.09	0.04	-0.02	67	3.59	+1.13	146
Chinook	76	19	42	1	+1	0.26	+0.12	0.00	-0.06	0	2.68	-0.46	85
Choteau	69	17	44	5	+5	0.11	+0.01	0.00	-0.03	0	1.76	-0.05	97
Cut Bank	68	23	43	7	+7	0.10	-0.04	0.00	-0.06	0	1.32	-1.20	52
Dunkirk	72	20	41	1	+1	0.07	-0.14	0.00	-0.09	0	1.54	-1.70	48
Fort Assiniboine	75	26	44	9	+9	0.28	+0.11	0.00	-0.06	0	3.67	+0.36	111
Fort Benton	76	21	44	10	+10	0.23	+0.02	0.02	-0.07	22	3.79	+0.02	101
Fort Belknap	74	21	42	3	+3	0.24	+0.14	0.01	-0.02	33	3.29	+0.79	132
Goldbutte	71	22	43	2	+2	0.09	-0.12	0.00	-0.09	0	4.59	+1.35	142
Havre	76	26	44	9	+9	0.18	+0.04	0.01	-0.05	17	3.28	+0.09	103
Heart Butte	69	23	42	3	+3	0.09	-0.33	0.00	-0.18	0	5.28	-10.44	34
Loma	70	19	43	0	+0	0.43	+0.22	0.08	-0.01	89	4.70	+1.10	131
Malta	74	26	47	11	+11	0.00	-0.14	0.00	-0.06	0	3.19	+0.16	105
Port of Morgan	72	23	44	6	+6	0.00	-0.07	0.00	-0.03	0	3.53	+1.78	202
Rudyard	71	20	41	0	+0	0.15	+0.08	0.06	+0.03	200	2.03	+0.17	109
Saco	74	21	42	0	+0	0.02	-0.12	0.01	-0.05	17	3.34	+0.37	112
Shelby	71	20	42	1	+1	0.03	-0.16	0.00	-0.08	0	2.70	-0.34	89
Turner	73	22	44	7	+7	0.00	-0.07	0.00	-0.03	0	2.66	+0.37	116
Zortman	67	27	40	0	+0	0.55	+0.34	0.02	-0.07	22	5.62	+2.21	165
<b>NORTHEAST</b>													
Bredette	73	13	41	0	+0	0.05	-0.09	0.00	-0.06	0	2.94	+0.45	118
Brockway	71	19	44	8	+8	0.25	+0.11	0.00	-0.06	0	2.61	+0.38	117
Circle	73	19	44	4	+4	0.66	+0.45	0.00	-0.09	0	3.34	+0.00	100
Culbertson	74	18	45	10	+10	0.06	-0.08	0.00	-0.06	0	2.25	-0.51	82
Glasgow	74	20	45	9	+9	0.04	-0.10	0.00	-0.06	0	4.08	+1.45	155
Glendive	72	21	47	15	+15	0.07	-0.14	0.00	-0.09	0	1.91	-1.41	58
Jordan	72	23	43	6	+6	0.37	+0.23	0.07	+0.01	117	5.57	+2.18	164
Nashua	74	20	45	7	+7	0.08	-0.06	0.00	-0.06	0	3.07	+0.71	130
Plentywood	74	15	39	1	+1	0.00	-0.14	0.00	-0.06	0	3.31	+0.47	117
Saint Marie	70	19	45	7	+7	0.00	-0.14	0.00	-0.06	0	3.11	+0.48	118
Savage	73	19	45	8	+8	0.02	-0.17	0.00	-0.09	0	1.68	-1.51	53
Scobey	73	19	44	9	+9	0.04	-0.10	0.00	-0.06	0	2.72	+0.38	116
Sidney	73	19	46	9	+9	0.12	-0.05	0.00	-0.09	0	2.29	-1.29	64
Wolf Point	76	18	45	12	+12	0.07	-0.07	0.00	-0.06	0	2.88	+0.16	106
<b>CENTRAL</b>													
Denton	71	22	42	2	+2	0.36	+0.15	0.04	-0.05	44	4.96	+1.40	139
Grass Range	70	30	46	8	+8	0.58	+0.30	0.00	-0.12	0	5.23	+0.81	118
Great Falls	72	21	44	7	+7	0.09	-0.19	0.03	-0.09	25	6.24	+1.69	137
Harlowton	69	30	45	9	+9	0.45	+0.24	0.00	-0.09	0	2.36	-1.11	68
Helena	71	30	45	8	+8	0.09	-0.06	0.02	-0.04	33	2.36	-0.85	74
Holter Dam	68	25	46	8	+8	0.60	+0.41	0.01	-0.08	11	4.26	+1.44	151
Judith Gap	68	26	39	1	+1	0.69	+0.42	0.08	-0.04	67	5.02	+1.04	126
Lewistown	69	28	43	9	+9	0.30	+0.02	0.05	-0.07	42	4.08	-1.33	75
Melstone	70	27	45	10	+10	0.54	+0.26	0.00	-0.12	0	4.36	+0.06	101
Millegan	68	22	40	5	+5	0.52	+0.17	0.00	-0.15	0	7.47	+1.45	124
Neihart	65	26	41	1	+1	0.76	+0.41	0.00	-0.15	0	6.54	-0.03	100
Roundup	71	24	42	3	+3	0.68	+0.47	0.07	-0.02	78	5.57	+2.19	165
Ryegate	69	31	46	12	+12	0.58	+0.43	0.00	-0.07	0	4.78	+1.56	148
Stanford	66	26	43	7	+7	0.36	+0.08	0.00	-0.12	0	3.81	-0.79	83
Townsend	71	28	45	5	+5	0.04	-0.10	0.00	-0.06	0	2.66	+0.11	104
Valentine	72	20	42	0	+0	0.15	+0.00	0.03	-0.03	50	4.02	+0.54	116
White Sulphur Springs	69	29	45	6	+6	0.31	+0.10	0.00	-0.09	0	4.27	+0.56	115
<b>SOUTHWEST</b>													
Boulder	66	24	42	1	+1	0.02	-0.12	0.00	-0.06	0	2.11	--0.79	73
Bozeman	65	28	43	2	+2	0.68	+0.28	0.00	-0.18	0	8.07	+1.39	121
Butte	63	20	38	0	+0	0.00	-0.21	0.00	-0.09	0	3.66	-0.21	95
Dillon	66	20	41	2	+2	0.13	-0.01	0.05	-0.01	83	2.72	+0.42	118
Divide	67	22	40	0	+0	0.16	-0.05	0.00	-0.09	0	5.46	+1.89	153
Ennis	68	24	41	1	+1	0.29	+0.05	0.02	-0.09	18	4.08	+0.05	101
Logan	67	25	43	0	+0	0.09	-0.19	0.00	-0.12	0	4.16	-0.65	86
Twin Bridges	66	25	42	1	+1	0.02	-0.12	0.00	-0.06	0	3.84	+1.68	178
West Yellowstone	53	19	34	0	+0	0.48	+0.13	0.00	-0.15	0	10.39	-0.97	91
Wisdom	67	11	36	1	+1	0.00	-0.19	0.00	-0.08	0	4.94	+0.79	119
<b>SOUTH CENTRAL</b>													
Big Timber	70	34	47	12	+12	0.17	--0.13	0.00	-0.14	0	6.20	+1.16	123
Billings	73	33	46	16	+16	1.08	+0.74	0.10	-0.05	67	4.97	-0.42	92
Busby	70	24	43	4	+4	0.62	+0.35	0.02	-0.10	17	4.56	-0.60	88
Gardiner	63	29	42	0	+0	0.26	+0.13	0.00	-0.05	0	3.11	-0.13	96
Hardin	74	22	46	11	+11	0.58	+0.36	0.10	+0.00	100	5.03	+0.91	122
Huntley	75	27	44	9	+9	0.80	+0.52	0.03	-0.09	25	4.80	+0.27	106
Hysham	74	29	46	8	+8	0.47	+0.26	0.00	-0.09	0	4.07	+0.04	101
Joliet	72	23	42	4	+4	0.61	+0.26	0.04	-0.11	27	4.36	-1.37	76
Livingston	69	32	44	10	+10	0.44	+0.16	0.04	-0.08	33	4.97	+0.34	107
Melville	69	28	43	9	+9	0.32	-0.03	0.00	-0.15	0	6.26	+1.31	126
Pompey's Pillar	71	17	41	4	+4	0.75	+0.47	0.10	-0.02	83	4.17	-0.39	91
Rapelje	71	21	44	5	+5	0.28	+0.00	0.00	-0.12	0	4.46	-0.38	92
Red Lodge	66	25	42	6	+6	2.02	+1.45	0.00	-0.24	0	7.56	-1.95	79
Wilsall	69	20	40	2	+2	0.52	+0.10	0.04	-0.14	22	7.88	+1.08	116
Yellowtail	69	29	43	3	+3	1.14	+0.74	0.06	-0.12	33	5.03	-1.89	73
<b>SOUTHEAST</b>													
Baker	72	18	44	10	+10	0.16	-0.07	0.02	-0.09	18	2.19	-1.97	53
Biddle	70	21	44	6	+6	0.34	+0.06	0.00	-0.12	0	3.87	-0.37	91
Brandenberg	73	24	45	6	+6	0.12	-0.16	0.00	-0.12	0	3.03	-1.72	64
Broadus	70	22	43	7	+7	0.44	+0.16	0.05	-0.07	42	3.23	-1.03	76
Colstrip	68	27	42	3	+3	0.45	+0.24	0.15	+0.06	167	5.20	+0.72	116
Ekalaka	68	17	44	7	+7	0.20	-0.11	0.00	-0.15	0	3.60	-1.45	71
Forsyth	72	28	46	10	+10	0.31	+0.06	0.00	-0.12	0	3.24	-1.02	76
Miles City	74	21	46	11	+11	0.05	-0.17	0.04	-0.06	40	2.36	-1.29	65
Mizpah	74	9	44	5	+5	0.19	-0.02	0.00	-0.09	0	2.95	-0.52	85
Plevna	72	16	45	9	+9	0.15	-0.08	0.00	-0.11	0	2.64	-1.52	63
Ridgeway	70	19	45	7	+7	0.10	-0.14	0.00	-0.12	0	3.24	-0.66	83
Terry	73	23	45	0	+0	0.00	-0.15	0.00	-0.07	0	2.21	-	

# U.S. Drought Monitor

March 29, 2016  
 (Released Thursday, Mar. 31, 2016)  
 Valid 8 a.m. EDT



Author:  
 Brad Rippey  
 U.S. Department of Agriculture

**Drought Impact Types:**

- ~ Delineates dominant impacts
- S = Short-Term, typically less than 6 months (e.g. agriculture, grasslands)
- L = Long-Term, typically greater than 6 months (e.g. hydrology, ecology)

**Intensity:**

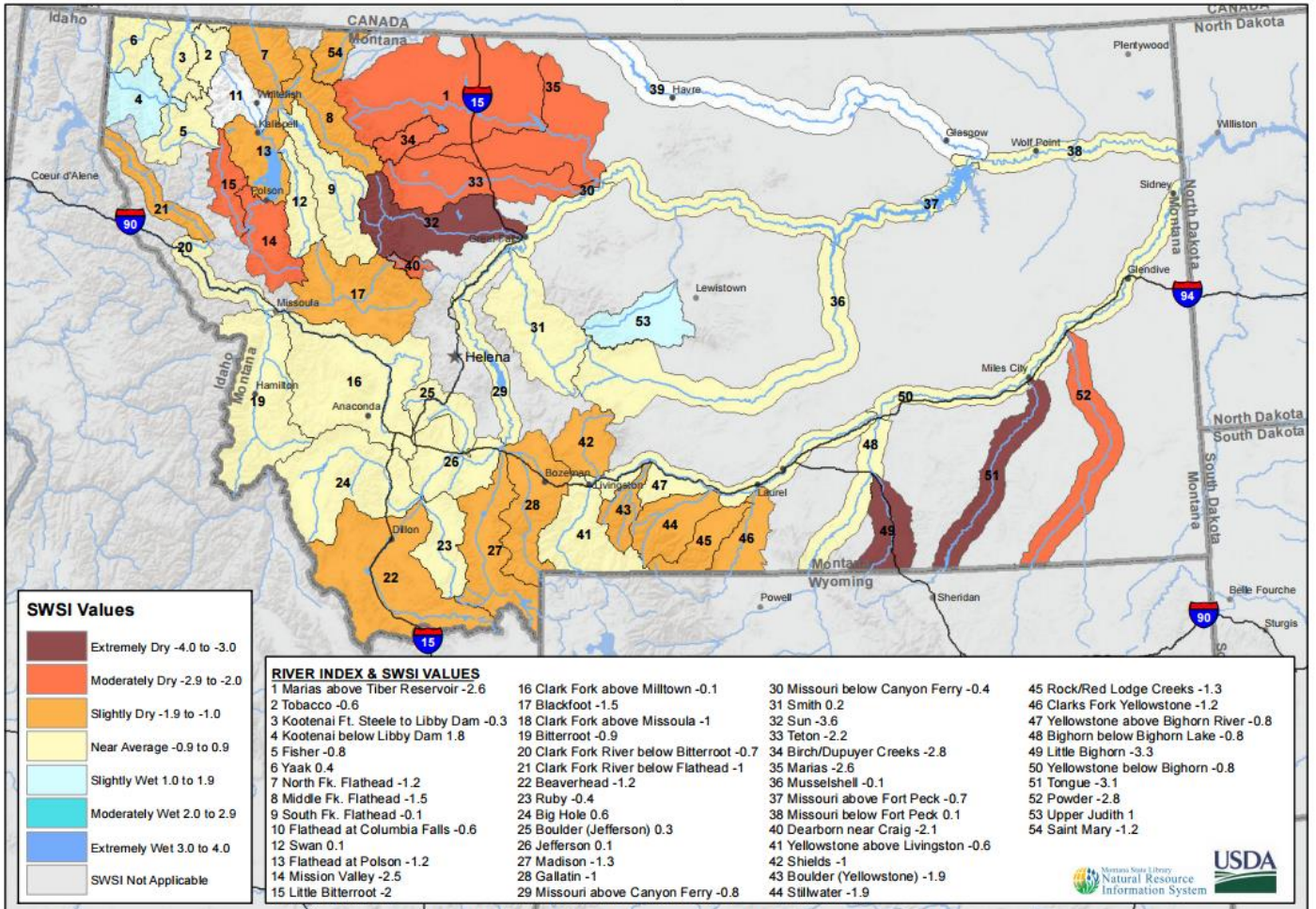
- D0 Abnormally Dry
- D1 Moderate Drought
- D2 Severe Drought
- D3 Extreme Drought
- D4 Exceptional Drought

The Drought Monitor focuses on broad-scale conditions. Local conditions may vary. See accompanying text summary for forecast statements.



<http://droughtmonitor.unl.edu/>

Montana Data Collection Office  
 Surface Water Supply Index (SWSI)  
 March 1, 2016



Note: Data used to generate this map are PROVISIONAL and SUBJECT TO CHANGE