

Montana

AGRICULTURAL STATISTICS

2019



Montana Agricultural Statistics Districts



CDL2018 Montana



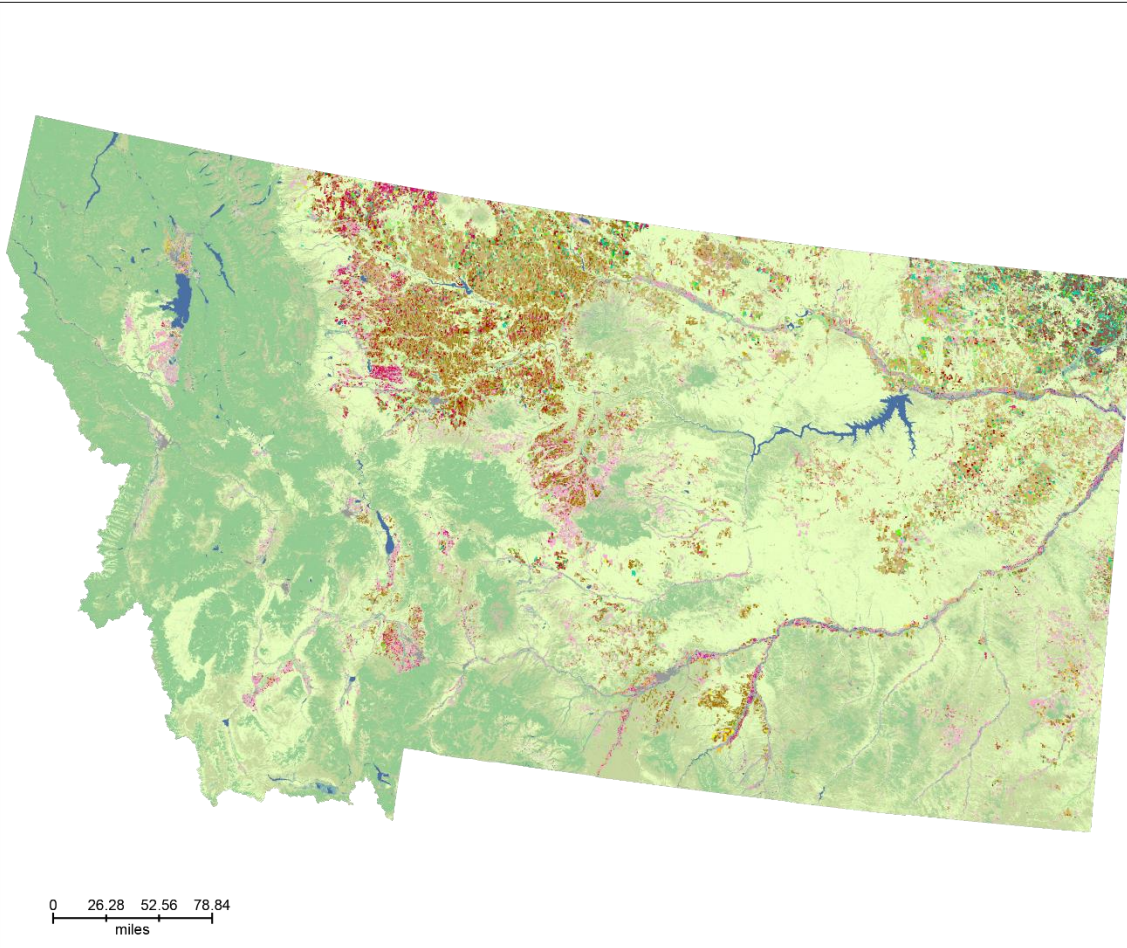
Land Cover Categories
(by decreasing acreage)

AGRICULTURE*

- Grass/Pasture
- Spring Wheat
- Alfalfa
- Other Hay/Non Alfalfa
- Fallow/Idle Cropland
- Winter Wheat
- Durum Wheat
- Barley
- Lentils
- Dry Beans
- Peas
- Canola
- Corn
- Mustard
- Sugarbeets
- Millet

NON-AGRICULTURE**

- Evergreen Forest
- Shrubland
- Woody Wetlands
- Developed/Open Space
- Open Water
- Barren



Produced by CropScape - <http://nassgeodata.gmu.edu/CropScape>

* Only top 16 agriculture categories are listed. ** Only top 6 non-agriculture categories are listed.

On the Cover

Judith Mountain Memories

Photograph by: Todd Klassy

Montana's Website: www.nass.usda.gov/mt

MONTANA AGRICULTURAL STATISTICS

Issn: 1095-7278

Volume LVI

October 2019

State of Montana
Steve Bullock, Governor

Issued Cooperatively by



Montana Department of Agriculture
Ben Thomas, Director
302 N. Roberts
Helena, MT 59620



U.S. Department of Agriculture
National Agricultural Statistics Service
Hubert Hamer, Administrator
Washington, D.C. 20250

Compiled by
**USDA, NASS, MOUNTAIN REGION –
MONTANA FIELD OFFICE**

Eric Sommer, State Statistician
Thomas Chard II, Survey Coordinator
10 West 15th Street, Suite 3100
Helena, MT 59626-3100
(406) 389-3600 or 1-800-835-2612
E-mail: nassrfomtr@nass.usda.gov
Website: www.nass.usda.gov/mt

Table of Contents

Comments from the Governor	4
Message from the Director of Montana Department of Agriculture	5
Notes from the State Statistician.....	5
General	
Montana Department of Agriculture	6-7
Montana Facts & Figures	8
Montana Population & Land Utilization	8
Farm Financial Indicators	8
Land in Farms & Ranches	8
Number of Farms – Montana: 1910-1949	9
Number of Farms, All Land in Farms, & Average Size of Farms – Montana: 1950-2018.....	9
Census of Agriculture: Number of Farms by Size.....	10
Census of Agriculture: Number of Farms by Value of Sales	10
Census of Agriculture: Number of Farms Reporting Cropland.....	10
Farms: Acres by Economic Sales Class – Montana: 2009-2018	11
Farms: Number of Farms, Land in Farms, & Average Size – Montana & U.S. 2009-2018	11
Farm Real Estate: Average Value per Acre by Type of Land – Montana & United States: 2009-2018.....	11
Census of Agriculture: Number of Farms, Land in Farms, & Average Farms Size, by County - Montana: 2012 & 2017.....	12
Economics	
Selected Montana Industries Comparison.....	13
Montana Selected Industries Comparison 2016-2018.....	13
Value Added to the U.S. Economy by the Agricultural Sector – Montana: 2014-2018.....	14
Farm Income & Expenses by Counties & Districts – Montana: 2017	15
Cash Rent: Dollars per Acre by Counties & Districts – Montana: 2016-2017.....	16
Cash Rent: Dollars per Acre by Counties & Districts – Montana: 2018-2019.....	17
Farm Real Estate Values, Annual Cash Rent per Acre, & Rent to Value – Montana: 2010-2019	18
Cash Receipts from Sales of Principal Products & Government Payments – Montana: 2009-2018.....	18
Cash Receipts from Sales of Principal Products & Government Payments – Montana: 2018	18
Cash Receipts from Marketing by Commodities – Montana: 2014-2018.....	19
Monthly Prices Received by Farmers, Select Commodities – Montana: 2014-2018.....	20
Marketing Year Average Prices, by Commodity – Montana: 2010-2018.....	21
Marketing of Major Montana Crops: Estimated Percent of Monthly Farm Sales – Montana: 2013-2018.....	21
Rankings	
Record Highs & Lows: Acreage, Yield, & Production of Crops – Montana	22
Record Highs & Lows: Livestock, Poultry, Honey, & Mink – Montana.....	23
Rank & Quantity Produced, Selected Commodities – Montana, Leading State, & United States: 2018.....	24
State Crops	
Crop Summary – Montana: 2018.....	25
Crop Summary – Montana: 2017.....	25
Usual Planting & Harvesting Dates by Crop – Montana	26
Acreage, Production & Value	
All Wheat: Area Planted & Harvested, Yield, Production, Price, & Value – Montana: 2009-2018	26
Winter Wheat: Area Planted & Harvested, Yield, Production, Price, & Value – Montana: 2009-2018	26
Durum Wheat: Area Planted & Harvested, Yield, Production, Price, & Value – Montana: 2009-2018.....	27
Other Spring Wheat: Area Planted & Harvested, Yield, Production, Price, & Value – Montana: 2009-2018	27
Barley: Area Planted & Harvested, Yield, Production, Price, & Value – Montana: 2009-2018	28
Oats: Area Planted & Harvested, Yield, Production, Price, & Value – Montana: 2009-2018.....	28
Corn: Acreage, Production, & Value – Montana: 2009-2018	29
Potatoes: Area Planted & Harvested, Yield, Production, Price, & Value – Montana: 2009-2018	29
Sugar Beets: Area Planted & Harvested, Yield, Production, Price, & Value – Montana: 2009-2018	29
Lentils: Area Planted & Harvested, Yield, Production, Price, & Value – Montana: 2009-2018.....	30
Dry Edible Beans: Area Planted & Harvested, Yield, Production, Price, & Value – Montana: 2009-2018	30
Pinto Beans: Acreage & Production – Montana: 2009-2018.....	30
Garbanzo Beans: Acreage & Production – Montana: 2009-2018.....	30
Dry Edible Peas: Area Planted & Harvested, Yield, Production, Price, & Value – Montana: 2009-2018	31
Austrian Winter Peas: Area Planted & Harvested, Yield, Production, Price, & Value – Montana: 2009-2018	31
Canola: Area Planted & Harvested, Yield, Production, Price, & Value – Montana: 2009-2018	31
Mustard Seed: Acreage & Production – Montana: 2009-2018.....	32
Flaxseed: Area Planted & Harvested, Yield, Production, Price, & Value – Montana: 2009-2018.....	32
Safflower: Area Planted & Harvested, Yield, Production, Price, & Value – Montana: 2009-2018.....	32

Acreage, Production & Value (Continued)

Alfalfa Seed: Acreage, Production, & Value – Montana: 2009-2018.....	33
All Hay: Area Harvested, Yield, Production, Price, & Value – Montana: 2009-2018.....	33
Alfalfa Hay: Area Harvested, Yield, Production, Price, & Value – Montana: 2009-2018.....	34
Other Hay: Area Harvested, Yield, Production, Price, & Value – Montana: 2009-2018.....	34
All Wheat, All Barley, & Oats, Quarterly Stocks – Montana: 2009-2018.....	35
Planted Wheat Acreage by Type – Montana: 2009-2018.....	35

County Crops

Winter Wheat: Acreage, Yield, & Production by County & District – Montana: 2017.....	36
Winter Wheat: Acreage, Yield, & Production by County & District – Montana: 2018.....	37
Spring Wheat: Acreage, Yield, & Production by County & District – Montana: 2017.....	38
Spring Wheat: Acreage, Yield, & Production by County & District – Montana: 2018.....	39
Durum Wheat: Acreage, Yield, & Production by County & District – Montana: 2017.....	40
Durum Wheat: Acreage, Yield, & Production by County & District – Montana: 2018.....	40
Barley: Acreage, Yield, & Production by County & District – Montana: 2017.....	41
Barley: Acreage, Yield, & Production by County & District – Montana: 2018.....	42
Oats: Acreage, Yield, & Production by County & District – Montana: 2017.....	43
Oats: Acreage, Yield, & Production by County & District – Montana: 2018.....	43
Dry Peas: Acreage, Yield, & Production by County & District – Montana: 2017-2018.....	44
All Dry Beans: Acreage, Yield, & Production by County & District – Montana: 2017-2018.....	45
Garbanzo Beans: Acreage, Yield, & Production by County & District – Montana: 2017-2018.....	45
Lentils: Acreage, Yield, & Production by County & District – Montana: 2017-2018.....	46
Sugar Beets: Acreage, Yield, & Production by County & District – Montana: 2017-2018.....	47
Canola: Acreage, Yield, & Production by County & District – Montana: 2017-2018.....	47
Alfalfa Hay: Acreage, Yield, & Production by County & District – Montana: 2017-2018.....	48
Other Hay: Acreage, Yield, & Production by County & District – Montana: 2017-2018.....	49

Cattle & Calves

Cattle & Calves: Number by Class & Calf Crop – Montana: January 1, 2015-2019.....	50
Calf Crop & Disposition – Montana: 2009-2018.....	50
Grazing Fees: Annual Average Rates – Montana: 2009-2018.....	50
All Cattle & Calves: Production & Income – Montana: 2009-2018.....	51
Milk & Cream: Marketings, Used on Farm, Income, & Value – Montana: 2014-2018.....	51

Sheep, Lamb & Goats

Sheep & Lamb: Lamb Crop, Farm Slaughter, & Death Loss – Montana: 2010-2019.....	52
Wool: Production, Price, & Value – Montana: 2009-2018.....	52

Hogs & Pigs

Hogs & Pigs: Total Breeding & Market Inventory, Farrowings, Pigs per Litter, Pig Crop, & Marketings – Montana: December 1, 2009-2018.....	53
Hogs & Pigs: Annual Farrowings & Disposition – Montana: 2009-2018.....	53
Hogs & Pigs: Production, Marketings, & Income – Montana: 2009-2018.....	53

Miscellaneous Livestock and Livestock Products

Chickens: Inventory by Class & Total Value – Montana: December 1, 2009-2018.....	54
Eggs: Production & Income – Montana: 2009-2018.....	54
Honey: Number of Colonies, Yield, Production, Stocks, Price, & Value – Montana: 2009-2018.....	54

Commercial Livestock Slaughter

Commercial Red Meat Production by Month – Montana: 2009-2018.....	55
Monthly Slaughter by Class – Montana: 2009-2018.....	55

County Livestock

All Cattle & Calves, Beef Cows & Heifers That Have Calved, Inventory by County – Montana: January 1, 2017-2019.....	56
Milk Cows & Heifers That Have Calved, Inventory by County – Montana: January 1, 2017-2019.....	57
All Sheep & Lambs: Inventory by County – Montana: January 1, 2017-2019.....	58
Hogs & Pigs: Inventory by County – Montana: December 1, 2016-2018.....	59

General Information

NASS Report Release Schedule.....	60
How to Subscribe to NASS Reports.....	60

OFFICE OF THE GOVERNOR
STATE OF MONTANA

Steve Bullock
GOVERNOR



Mike Cooney
LT. GOVERNOR

August 21, 2019

Welcome to the 2019 edition of the Montana Agricultural Statistics.

Agriculture continues to be our most important industry here in Montana. People across our state and throughout the world associate Montana agriculture with high quality ag products, and that's not by accident. For generations, our producer's wisdom, foresight, and resiliency has made Montana's ag industry the backbone of our state's economy.

Montana's producers raise some of the finest quality pulses, wheat, barley and beef in the world. Our producers are taking advantage of new industries like industrial hemp, and we've seen significant growth in specialty crops over the past several years. They are also capitalizing on the local food movement, creating another market opportunity while also providing consumers with fresh and local ingredients.



So, let's give thanks to the past, present, and future generations of Montana producers who make Montana agriculture what it is. We aren't short on challenges, but we are long on talent, and that should give us all reason to celebrate. If you have ideas or suggestions for agriculture development or business opportunities, feel free to send me a note on the www.governor.mt.gov website, or give my office a call at (406) 444-3111.

Thanks again and I look forward to hearing from you.

Sincerely,

A handwritten signature in blue ink, appearing to read "S. Bullock".

STEVE BULLOCK
Governor

**MESSAGE FROM
THE DIRECTOR**



Director Thomas's message for 2019 Agricultural Statistics publication

Agriculture is Montana's most important industry and the cornerstone of our rural economies. While our producers are faced with more uncertainty than ever before, they continue to be at the forefront of an ever-changing industry.

Montana continues to be a leading producer of pulse crops, and our wheat remains among the best quality in the world. Beef, barley, sugar beets, seed potatoes, canola and organics continue to be vital pieces of our diverse agriculture industry. In 2018, we were the leading producer of hemp in the US and that program is poised for significant and continued growth as our producers gain more experience and more processing capabilities come online.

Here at the Montana Department of Agriculture, we are proud to serve Montana's ag industry and the people who power it. Whether it's through grant funds or direct technical assistance, the Department is working with and for Montana's producers and consumers to promote and protect our #1 industry.

If you have a question or idea, don't hesitate to contact the Department at agr@mt.gov or (406) 444-3144. Updates to this annual Montana Agricultural Statistics bulletin, produced in cooperation with the National Agricultural Statistics Service, are available electronically at www.nass.usda.gov/mt.

Sincerely,

A handwritten signature in blue ink that reads "Ben Thomas".

Ben Thomas, Director, Montana Department of Agriculture

I proudly introduce the 56th edition of the Montana Agricultural Statistics Bulletin. This publication is the culmination of a year's worth of data collection and analysis. While this book is filled with interesting facts and figures, it also contains the story of Montana Agriculture. Many producers volunteered their time and information to give the most current picture of the health of agricultural community.

It is amazing how different each crop year can be and how the industry responds to all the different challenges. The 2018 crop year was a story of recovery, how the land and plants respond after such a horrible drought, how the industry can rebound, and what changes need to be made to keep our industry viable and productive. This bulletin tells the story of the Montana producer and how our great state can continue to produce the highest quality agricultural products.

Producers will always face challenges whether its prices, drought, or economic downturns. It is NASS's job to share the producers and the industries story. We cannot continue sharing the story without the support of commodity groups, agribusinesses, and the producers.

Thank you to all of Montana's farmers, ranchers, and agribusinesses that made this publication possible. Thank you to all the producers and commodity groups that I have the opportunity to meet, work, and socialize with throughout the year. I would also like to recognize National Association of State Departments of Agriculture employees across the state and the NASS staff (current and retired) for everything you do to make this publication possible.

A handwritten signature in black ink that reads "Eric Sommer".

Eric Sommer, State Statistician, USDA, NASS, Montana Field Office

**NOTES FROM THE
STATE
STATISTICIAN**





Department Mission

"To protect producers and consumers, and to enhance and develop agriculture and allied industries."

Director: Ben Thomas, (406) 444-3144

Deputy Director: Kim Mangold

Central Services Administrator: Cindy Trimp

Chief Legal Counsel: Cort Jensen

Communications Officer: VACANT

Executive Assistant: Chelsi Bay

Department Programs & Background

Montana Department of Agriculture operates 30 programs, many funded entirely through user fees. These include regulatory programs that protect producers, consumers and the environment, as well as development and marketing programs to foster growth in Montana agriculture. The Director's Office also serves as an advocate for Montana agriculture in national and international forums, and works to make the department's programs accessible to the public.

Agricultural Development Division

Administrator: Kim Mangold (406) 444-5406

Ag Development & Marketing Bureau

Bureau Chief: Andy Fjeseth (406) 444-3571

- Marketing and Business Assistance
- Grants and Loans
- Agricultural Curriculum Development
- Agricultural Finance
- Agricultural Statistics
- State Hail Insurance
- Commodity Check-off Programs

Wheat & Barley Bureau, Great Falls

Interim Bureau Chief: Cassidy Marn, (406) 761-7732

- Producer Funded Research & Marketing
- Hosts Foreign Buyers and Delegations

State Grain Laboratory, Great Falls

Bureau Chief: VACANT, (406) 452-9561

- Federally licensed grain inspection

Marketing Assistance programs assist companies in developing and marketing their products, facilitating nearly \$1,000,000 in trade show sales and \$1,000,000 in sales from export trade activities.

Growth Through Agriculture awards grants and loans to businesses and individuals for value-added agriculture projects.

State Hail Insurance insured 720,000 acres in 2018. The program insured nearly \$47 million in crop value.

Agricultural Finance programs have a combined loan portfolio of more than \$3.6 million.

Specialty Crop Block Grant Program awards \$1.5 million to various agricultural marketing and research projects throughout the state.

State Grain Laboratory completes tests for grade, protein, germination, falling numbers and vomitoxin for wheat, barley, canola, dry peas, lentils, garbanzo beans and various other commodities. Both the Great Falls and Plentywood facilities are designated as an official agency of the Federal Grain Inspections Service under USDA Agriculture Marketing Service authorized to completed official inspections for all domestic and foreign exports.

Wheat & Barley Committee annually hosts an average of 13 foreign trade delegations and 60 visitors from seven nations that have an interest in purchasing Montana grains. The Committee represents producers on transportation issues, research, and market development.

Food and Agriculture Development Centers assisted clients with regional food and farm-derived energy projects, helping to introduce new products, start new businesses and assist business expansions.

Agricultural Sciences Division

Administrator: Christy Clark (406) 444-2945

Analytical Laboratory Bureau, Bozeman

Bureau Chief: Jona Verreth, (406) 994-3383
- Provides testing services for feed, fertilizer, pesticide and ground water programs

Commodity Services Bureau

Bureau Chief: Ian Foley (406) 444-9454
- Anhydrous Ammonia
- Feed/Fertilizer
- Grain Warehouses and Auditing
- Organic Certification
- Produce/Seed/Seed Potatoes
- Cooperative Ag. Pest Survey
- Food Safety

Agricultural Services Bureau

Bureau Chief: Beth Eiring, (406) 444-9431
- Apiary/Alfalfa Leaf Cutter Bees
- Noxious Weeds
- Noxious Weed Seed Free Forage
- Ground Water
- Pesticide Licensing and Registration
- Pesticide Recycling & Disposal
- Pesticide Compliance
- Driftwatch
- Vertebrate Pests
- Nursery/Quarantine

The Division:

- Licenses about 500 pesticide dealers and registers 12,000 pesticide products.
- Licenses about 5,800 private and 1,900 commercial and government pesticide applicators and 450 pesticide dealers.
- Certifies 93 commercial honeybee beekeepers and registers 6,187 apiary locations.
- Issues about 2,000 plant health and export certificates annually
- Licenses 922 nurseries to assure safe products.
- Issued 3,134 inspection certificates on 291,868,000 pounds of potatoes shipped for seed in 2017.
- Licenses over 1,000 feed manufacturer/distributors and registered over 10,000 pet food products annually.
- Licenses 227 Commodity Dealer and Warehouse locations. Each of the locations are audited annually for compliance.

Analytical Laboratory, operated jointly with MSU at Bozeman, reports about 70,000 individual test results annually on 2,000 feed, fertilizer, soil, plant tissue and water samples.

Pesticide Disposal Program assists homeowners, businesses and producers in disposing of unwanted and unusable pesticides – a total of 638,000 pounds since 1994.

Pesticide Container Recycling Program was created to keep pesticide container plastic out of Montana's landfills. The PCRCP truck will arrive at predetermined collection sites to collect and grind all cleaned and prepared #2 HDPE pesticide plastic. The program has collected approximately 525,300 lbs. since 2011.

Fertilizer Program annually registers more than 5,000 fertilizer and soil amending products and licenses over 600 businesses.

Organic Program annually inspects and certified 241 producers and 70 food handlers as compliant with USDA organic standards. Organic certification allows access to local, national and international value-added markets for organic food products.

Noxious Weed Trust Fund annually distributes more than \$2 million in grants for weed management, research and education from vehicle license fee, federal grants and interest received from the Noxious Weed Trust Fund principal.

Food Safety Unit performs inspections and certifications, offers trainings, and implements the Food Safety Modernization Act.

Seed Program licenses 491 seed locations that include the following number of licenses: 333 Montana seed dealers, 48 Montana seed labelers, 29 Montana seed growers, 81 seed conditioners, 66 non-resident seed dealers, and 92 non-resident seed labelers.

Board, Councils and Committees

- | | |
|--|--|
| - Agriculture Development Council | - Noxious Weed Seed Free Forage Advisory Council |
| - Alfalfa Seed Committee | - Organic Commodity Advisory Council |
| - Hail Insurance Board | - Potato Advisory Committee |
| - Hemp Advisory Committee | - Pulse Crop Committee |
| - Noxious Weed Management Advisory Council | - Wheat & Barley Committee |

Montana Facts and Figures

Montana's 2010 population, at 989,415, was up 9.7 percent from 2000. Population density, measured in people per square mile, was 6.8 in 2010--third lowest in the United States. Montana's 58.0 million acres of land in farms and ranches ranks second in the nation behind Texas.

Montana Population ¹		Land and Land Utilization	
Total, 2010 Census	989,415	Montana Total Land Area, Square Miles ¹	145,546
People Per Square Mile	6.8	Montana Total Land Area, Acres ¹	93,149,312
		All Land in Farms & Ranches, Acres ²	58,122,878
		Proportion of Land in Farms & Ranches ²	62.4%

¹ 2010 U.S. Population Census.

² 2017 U.S. Census of Agriculture.

Farm Financial Indicators

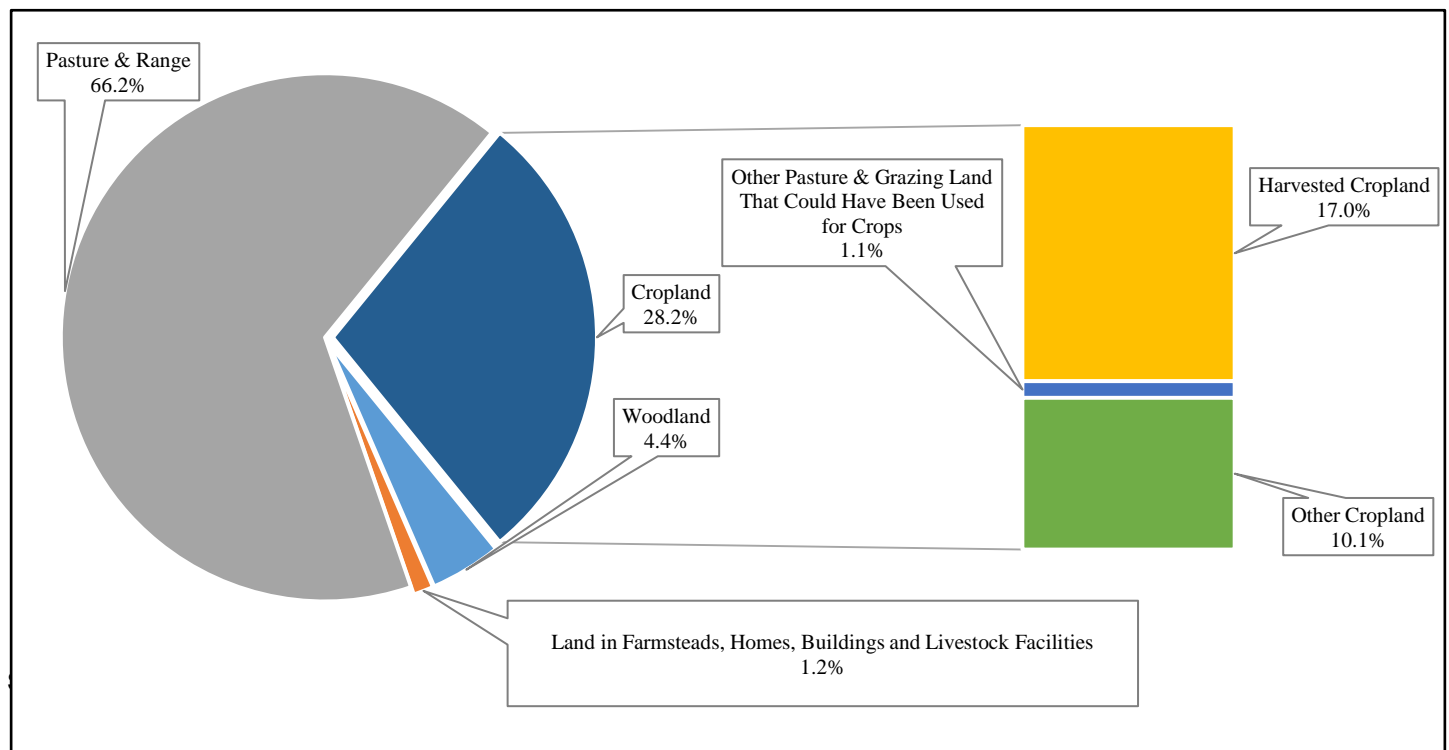
(1,000)

Number of Farms & Ranches ¹	26,900		Value of Crop Production ²	\$1,475,312
Average Size of Farm or Ranch ¹	2,156	Acres	Value of Animals & Products Production ²	\$1,588,241
Gross Farm Income ²	\$4.39	Billion	Farm-Related Income ²	\$954,550
Value of Agriculture Sector Production ²	\$4.02	Billion	Net Farm Income ²	\$351,014

¹ Places with annual sale of agricultural products of \$1,000 or more.

² Source: USDA, Economic Research Service, Farm Financial Indicators State Rankings, 2017 figures.

Land in Farms & Ranches: Utilization as a Percentage of Total



Number of Farms – Montana: 1910 - 1949

Year	Number of Farms (1,000)	Year	Number of Farms (1,000)	Year	Number of Farms (1,000)	Year	Number of Farms (1,000)
1910	28.8	1920	57.7	1930	55.0	1940	44.5
1911	31.5	1921	57.0	1931	54.5	1941	42.0
1912	34.0	1922	55.0	1932	54.0	1942	41.0
1913	37.0	1923	52.5	1933	53.5	1943	40.8
1914	40.0	1924	51.0	1934	53.0	1944	40.6
1915	45.0	1925	50.0	1935	52.0	1945	40.4
1916	50.0	1926	51.0	1936	50.0	1946	39.8
1917	54.0	1927	52.5	1937	48.0	1947	39.2
1918	56.0	1928	53.5	1938	46.0	1948	38.5
1919	57.0	1929	54.0	1939	45.0	1949	37.8

Number of Farms, All Land in Farms, & Average Size of Farms – Montana: 1950 - 2018

Year ¹	Number of Farms (1,000)	All Land in Farms (1,000 Acres)	Average Size of All Farms Acres	Year	Number of Farms (1,000)	All Land in Farms (1,000 Acres)	Average Size of All Farms Acres
1950	37.2	65,000	1,747	1990	24.7	60,500	2,449
1951	36.8	65,200	1,772	1991	24.7	60,300	2,441
1952	36.4	65,500	1,799	1992	24.3	60,000	2,469
1953	35.9	65,800	1,833	1993	25.0	59,900	2,396
1954	35.4	66,100	1,867	1994	26.0	59,600	2,292
1955	34.8	66,100	1,899	1995	26.0	59,400	2,285
1956	34.2	66,200	1,936	1996	26.5	58,500	2,208
1957	33.6	66,300	1,973	1997	27.0	57,800	2,141
1958	33.0	66,500	2,015	1998	27.5	59,000	2,145
1959	32.4	66,600	2,056	1999	27.8	59,200	2,129
1960	31.7	66,700	2,104	2000	27.8	59,300	2,133
1961	30.8	66,800	2,169	2001	27.8	59,600	2,144
1962	30.1	66,800	2,219	2002	27.9	59,800	2,143
1963	29.5	66,800	2,264	2003	28.0	60,300	2,154
1964	28.9	67,200	2,325	2004	28.0	60,400	2,157
1965	28.4	66,700	2,349	2005	28.0	60,600	2,164
1966	28.0	66,200	2,364	2006	28.1	60,800	2,164
1967	27.6	65,700	2,380	2007	29.5	60,900	2,064
1968	27.1	65,200	2,406	2008	29.3	60,600	2,068
1969	26.7	64,700	2,423	2009	29.5	60,500	2,051
1970	26.4	64,200	2,432	2010	29.1	60,600	2,082
1971	26.0	63,700	2,450	2011	28.7	60,700	2,115
1972	25.5	63,200	2,478	2012	28.0	59,800	2,136
1973	25.1	63,000	2,510	2013	28.1	59,700	2,125
1974	24.6	62,800	2,553	2014	27.8	59,700	2,147
1975	23.4	62,200	2,658	2015	27.5	59,700	2,171
1976	23.4	62,200	2,658	2016	27.4	59,700	2,179
1977	23.5	62,100	2,643	2017	27.1	59,800	2,207
1978	23.6	62,100	2,631	2018	26.9	58,000	2,156
1979	23.7	62,100	2,620				
1980	23.8	61,900	2,601				
1981	23.9	61,700	2,582				
1982	24.0	61,500	2,563				
1983	24.1	61,300	2,544				
1984	24.2	61,100	2,525				
1985	24.3	61,000	2,510				
1986	24.4	60,900	2,496				
1987	24.5	60,800	2,482				
1988	24.6	60,700	2,467				
1989	24.7	60,600	2,453				

¹ Beginning in 1975, number of farms refers to places that had annual sales of agricultural products of \$1,000 or more.

Census of Agriculture: Number of Farms by Size

Acres	1-9	10-49	50-179	180-499	500-999	1,000-1,999	2,000 or More	Total No. of Farms
Year	Number of Farms							
1954	1,455	1,893	4,800	5,952	5,553	(1)	13,408	33,061
1959	675	1,690	3,804	4,983	4,671	(1)	13,181	28,959
1964	704	1,641	3,393	4,396	3,954	5,101	7,831	27,020
1969	1,283	1,485	2,791	3,757	3,339	4,700	7,596	24,951
1974	1,177	1,550	2,707	3,436	2,990	4,053	7,411	23,324
1978	1,255	1,889	2,987	3,420	2,928	4,011	7,075	23,565
1982	1,551	2,673	3,080	3,097	2,640	3,345	7,184	23,570
1987	1,940	2,745	3,019	3,315	2,737	3,460	7,352	24,568
1992	1,209	2,804	3,061	2,964	2,521	3,040	7,222	27,821
1997	1,195	4,673	4,414	4,032	3,067	3,382	6,869	27,632
2002	1,484	5,005	4,497	3,964	2,770	3,034	7,116	27,870
2007	1,917	5,462	4,971	4,464	2,919	2,935	6,856	29,524
2012	2,365	5,518	4,478	3,835	2,560	2,771	6,481	28,008
2017	2,516	5,836	4,332	3,570	2,210	2,246	6,338	27,048

¹ Combined with "2,000 acres or more".

Census of Agriculture: Number of Farms by Value of Sales

Value	Less than \$2,500	\$2,500-\$4,999	\$5,000-\$9,999	\$10,000-\$24,999	\$25,000-\$49,999	\$50,000-\$99,999	\$100,000-\$499,999	\$500,000 or More	Total No. of Farms
Year	Number of Farms								
1954	9,654	600	7,760	3,905	2,581	--	--	--	33,061
1959	6,469	4,024	6,570	11,691	--	--	--	--	28,959
1964	5,886	3,522	6,518	(1)	11,753	(2)	251	(2)	27,020
1969	4,525	2,375	3,800	(1)	13,512	(2)	597	49	24,951
1974	3,340	1,655	2,520	(1)	13,565	(2)	2,036	106	23,324
1978	2,842	1,991	2,538	4,573	4,757	(2)	2,567	160	23,565
1982	3,914	1,795	2,295	3,703	3,592	3,928	3,981	263	23,570
1987	4,320	2,006	2,374	3,912	3,695	4,064	3,945	252	24,568
1992	4,073	1,764	2,131	3,413	3,051	3,528	4,492	369	27,821
1997	7,129	2,314	2,559	3,666	3,066	3,425	4,988	485	27,632
2002	10,117	1,776	2,162	3,043	2,718	3,027	4,507	520	27,870
2007	11,977	1,784	1,934	2,770	2,215	2,464	5,247	1,133	29,524
2012	8,092	2,112	2,457	3,038	2,442	2,333	5,268	2,266	28,008
2017	9,962	1,711	1,967	2,235	2,138	2,119	5,086	1,424	27,048

-- Not available.

¹ Combined with "\$25,000-\$49,999".

² Combined with "\$100,000-\$499,999".

Census of Agriculture: Number of Farms Reporting Cropland

Year	Farms Reporting Cropland	Acres of Cropland	Cropland Acres Average Per Farm
1954	31,218	14,508,389	465
1959	27,486	15,077,067	549
1964	25,212	15,388,431	610
1969	22,709	16,108,575	709
1974	21,368	15,445,720	723
1978	21,437	16,232,608	757
1982	20,717	16,452,331	794
1987	21,064	17,829,766	846
1992	19,442	17,494,553	900
1997	22,803	18,238,158	800
2002	21,854	18,315,514	838
2007	21,809	18,241,710	836
2012	19,888	17,022,177	856
2017	19,101	16,406,300	859

Farms: Acres by Economic Sales Class – Montana: 2009-2018

Year	\$1000-\$9,999	\$10,000-\$99,999	\$100,000-\$249,999	\$250,000-\$499,999	\$500,000-999,999 ¹	\$1,000,000 & Over	Total
	(1,000 Acres)	(1,000 Acres)	(1,000 Acres)	(1,000 Acres)	(1,000 Acres)	(1,000 Acres)	(1,000 Acres)
2009	3,300	11,400	14,300	13,800	17,700	(2)	60,500
2010	3,500	10,900	13,100	12,700	20,400	(2)	60,600
2011	4,200	10,400	12,300	13,300	20,500	(2)	60,700
2012	3,100	9,300	9,900	12,400	25,100	(2)	59,800
2013	2,900	9,400	10,100	12,500		11,700	59,400
2014	2,600	9,600	10,000	12,600	12,900	11,300	59,000
2015	2,400	9,600	10,000	12,800	12,800	11,100	58,700
2016	2,100	9,900	10,200	13,200	12,400	10,600	58,400
2017	2,000	10,100	10,300	13,300	12,200	10,200	58,100
2018	1,900	10,400	10,200	13,400	12,200	9,900	58,000

¹ \$500,000 & over before 2013 & \$500,000 - \$999,999 2013 & later.

² \$1,000,000 & over economic sales class not published before 2013.

Farms: Number of Farms, Land in Farms, & Average Size – Montana & U.S. 2009-2018

Year	Montana			United States		
	Farms ¹	Land in Farms	Average Size	Farms ¹	Land in Farms	Average Size
	(Number)	(1,000 Acres)	(Acres)	(Number)	(1,000 Acres)	(Acres)
2009.....	29,500	60,500	2,051	2,169,660	917,590	423
2010.....	29,100	60,600	2,082	2,149,520	915,660	426
2011.....	28,700	60,700	2,115	2,131,240	914,420	429
2012.....	28,000	59,800	2,136	2,109,810	914,600	433
2013.....	28,100	59,400	2,114	2,100,350	911,720	434
2014.....	27,800	59,000	2,122	2,082,440	908,920	436
2015.....	27,500	58,700	2,135	2,063,890	905,790	439
2016.....	27,400	58,400	2,131	2,055,340	902,680	439
2017.....	27,000	58,100	2,152	2,042,000	900,370	441
2018.....	26,900	58,000	2,156	2,029,200	899,500	443

¹ Annual sales of agricultural products of \$1,000 or more.

Farm Real Estate: Average Value per Acre by Type of Land – Montana & United States: 2009-2018

Year	Montana					United States		
	All Land	All Cropland	Irrigated Cropland	Non-Irrigated Cropland	Pasture	All Land	All Cropland	Pasture
	(Dollars/Acre)	(Dollars/Acre)	(Dollars/Acre)	(Dollars/Acre)	(Dollars/Acre)	(Dollars/Acre)	(Dollars/Acre)	(Dollars/Acre)
2009.....	700	788	2,800	600	530	2,090	2,640	1,060
2010.....	700	779	2,690	600	530	2,150	2,700	1,060
2011.....	710	806	2,690	630	530	2,300	2,980	1,070
2012.....	760	852	2,690	680	570	2,520	3,350	1,110
2013.....	790	890	2,780	710	580	2,730	3,810	1,170
2014.....	860	987	2,950	800	640	2,950	4,100	1,300
2015.....	890	997	2,960	810	650	3,020	4,130	1,330
2016.....	900	1,010	2,980	820	650	3,010	4,090	1,330
2017.....	920	1,020	2,980	830	660	3,080	4,090	1,350
2018.....	920	1,030	3,000	840	670	3,140	4,130	1,390

Census of Agriculture: Number of Farms, Land in Farms, & Average Farms Size, by County - Montana: 2012 & 2017

County & District	2012			2017		
	Number of Farms	Land in Farms	Average Size of Farms	Number of Farms	Land in Farms	Average Size of Farms
		(Acres)	(Acres)		(Acres)	(Acres)
Deer Lodge	93	66,577	716	77	74,083	962
Flathead	1,035	169,898	164	1,146	181,882	159
Granite	163	285,419	1,751	151	285,656	1,892
Lake	1,156	555,766	481	1,170	641,471	548
Lincoln.....	325	47,284	145	345	47,783	139
Mineral.....	95	17,049	179	93	18,408	198
Missoula.....	637	247,141	388	576	260,117	452
Powell.....	263	589,239	2,240	254	572,388	2,253
Ravalli.....	1,438	234,782	163	1,576	241,233	153
Sanders.....	492	338,725	688	521	642,640	1,233
Northwest						
Blaine	546	2,204,248	4,037	491	2,040,127	4,155
Chouteau	774	2,071,771	2,677	633	2,070,530	3,271
Glacier.....	602	1,570,323	2,609	637	1,185,873	1,862
Hill	802	1,597,982	1,992	698	1,615,704	2,315
Liberty.....	304	897,946	2,954	246	913,576	3,714
Phillips.....	507	2,066,540	4,076	445	1,936,545	4,352
Pondera.....	505	956,635	1,894	486	804,578	1,656
Teton.....	742	975,173	1,314	686	887,436	1,294
Toole.....	423	1,128,523	2,668	362	1,094,910	3,025
North Central.....						
Daniels.....	338	768,240	2,273	277	769,786	2,779
Dawson.....	485	1,258,119	2,594	487	1,132,990	2,326
Garfield.....	297	2,190,715	7,376	260	2,214,815	8,519
McCone.....	489	1,371,908	2,806	437	1,339,597	3,065
Richland.....	544	1,293,012	2,377	527	1,270,080	2,410
Roosevelt.....	606	1,239,688	2,046	501	1,307,366	2,610
Sheridan.....	527	1,041,794	1,977	458	1,064,068	2,323
Valley.....	654	1,634,642	2,499	557	1,630,027	2,926
Northeast						
Broadwater.....	287	476,797	1,661	296	466,920	1,577
Cascade.....	1,105	1,254,745	1,136	1,027	1,270,192	1,237
Fergus.....	790	1,961,057	2,482	845	2,188,069	2,589
Golden Valley.....	157	708,186	4,511	157	683,145	4,351
Judith Basin.....	324	1,034,416	3,193	357	860,136	2,409
Lewis & Clark.....	703	843,160	1,199	707	800,658	1,132
Meagher.....	136	812,325	5,973	145	882,177	6,084
Musselshell.....	356	1,017,953	2,859	346	1,103,333	3,189
Petroleum.....	100	689,752	6,898	104	592,558	5,698
Wheatland.....	154	873,959	5,675	174	860,203	4,944
Central.....						
Beaverhead.....	430	1,380,888	3,211	494	1,233,811	2,498
Gallatin.....	1,163	702,713	604	1,123	700,462	624
Jefferson.....	401	371,205	926	370	352,128	952
Madison.....	571	1,085,291	1,901	605	923,307	1,526
Silver Bow.....	140	69,740	498	142	60,306	425
Southwest.....						
Big Horn.....	527	3,148,871	5,975	353	3,188,139	9,032
Carbon.....	726	791,295	1,090	725	815,758	1,125
Park.....	564	774,057	1,372	575	711,966	1,238
Stillwater.....	593	809,443	1,365	562	762,568	1,357
Sweet Grass.....	332	855,709	2,577	301	826,134	2,745
Treasure.....	109	617,635	5,666	121	614,142	5,076
Yellowstone.....	1,330	1,668,346	1,254	1,314	1,602,794	1,220
South Central						
Carter.....	327	1,778,011	5,437	323	1,767,723	5,473
Custer.....	423	2,189,930	5,177	441	2,088,806	4,737
Fallon.....	295	979,692	3,321	289	902,019	3,121
Powder River.....	328	1,588,599	4,843	325	1,626,630	5,005
Prairie.....	186	769,046	4,135	179	747,256	4,175
Rosebud.....	437	3,141,524	7,189	414	2,732,466	6,600
Wibaux.....	172	545,433	3,171	137	515,403	3,762
Southeast.....						
Montana	28,008	59,758,917	2,134	27,048	58,122,878	2,149

Agriculture Remains Montana's Number One Industry in 2018

A comparison of selected Montana industries shows Agriculture continues to outpace all other industry sectors, although all sectors saw increased activity. The 2018 value of crop production increased to \$2.1 billion, an increase of \$606 million or 41.4 percent above 2017. The value of livestock decreased in 2018 to \$1.54 billion, down \$55.6 million from 2017.

When comparing major industrial sectors in Montana, all receipts were up compared to a year ago. Agriculture showed a 10 percent increase, up \$382.1 million from 2017. Mining showed a 21 percent increase, up \$300.5 million from the previous year. Gas & Oil showed an increase of 29 percent, up \$297.4 million from 2017. Non-residential Travel showed an increase of 6 percent in 2017, up \$214.7 million from 2017. Wood and Paper Products also saw an increase from 2017, up 5 percent or \$30 million.

Selected Montana Industries Comparison

Industry	2017 Million Dollars			2017/2018 Percent
	2016	2017	2018 ⁵	
Agriculture ¹	4,323.1	4,029.9	4,402.4	+10%
Mining ²	1,224.8	1,466.6	1,767.1	+21%
Gas & Oil ²	872.4	1,017.9	1,315.3	+29%
Travel ³	3,015.7	3,364.8	3,579.5	+6%
Wood & Paper Products ⁴	563.0	569.0	599.0	+5%

¹ Value of agricultural sector production.

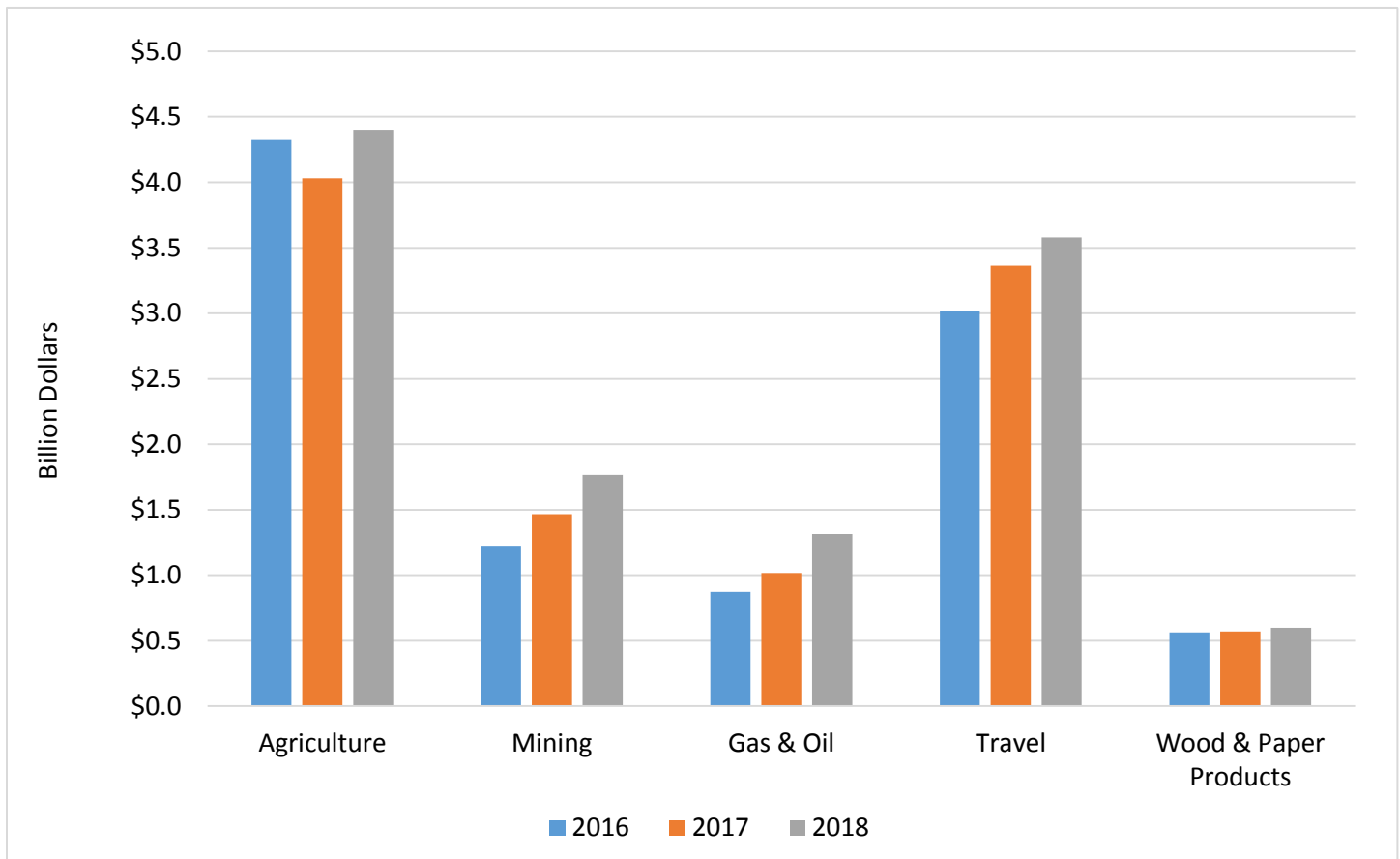
² Gross value, Montana Department of Revenue.

³ Non-resident Direct Economic Impact, Institute for Tourism and Recreation Research, The University of Montana.

⁴ Bureau of Business and Economic Research, The University of Montana.

⁵ 2018 preliminary.

Montana Selected Industries Comparison 2016-2018



Value Added to the U.S. Economy by the Agricultural Sector – Montana: 2014-2018

Montana	2014	2015	2016	2017	2018
	\$1,000	\$1,000	\$1,000	\$1,000	\$1,000
Value of Crop Production	2,201,438	1,824,779	1,976,258	1,464,946	2,071,093
Crop Cash Receipts	2,353,754	1,886,329	2,031,497	1,817,612	1,888,031
Feed Crops.....	662,825	574,513	525,338	556,340	572,185
Food Grains.....	1,331,875	910,915	918,994	816,857	875,770
Fruits & Nuts.....	3,991	1,769	NA	NA	NA
Oil Crops.....	37,122	31,174	30,062	40,442	27,546
Vegetables & Melons.....	193,961	221,489	407,366	265,931	276,566
All Other Crops.....	123,980	146,468	149,737	138,042	135,965
Home Consumption.....	5,287	1,577	1,636	2,158	1,550
Inventory Adjustment.....	-157,602	-63,127	-56,875	-354,825	181,513
Value of Animals & Products Production	2,167,542	2,152,220	1,621,778	1,599,244	1,543,595
Animals & Products Cash Receipts	2,251,104	1,869,295	1,616,941	1,721,136	1,605,796
Dairy Products, Milk.....	65,120	43,806	45,820	49,525	43,200
Meat Animals.....	2,062,542	1,699,046	1,461,379	1,558,359	1,422,400
Miscellaneous Livestock	99,748	92,212	89,888	92,592	98,427
Poultry & Eggs.....	23,694	34,231	19,855	20,660	41,769
Home Consumption.....	5,228	6,313	5,219	4,928	4,587
Inventory Adjustment.....	-88,790	276,612	-383	-126,820	-66,788
Farm-Related Income	728,879	756,845	711,551	956,188	787,740
Forest Products Sold.....	2,080	1,937	3,146	2,017	3,070
Gross Imputed Rental Value of Farm Dwellings.....	355,806	396,302	368,923	407,340	421,105
Machine Hire & Custom Work	55,113	60,983	44,932	37,132	41,949
Other Farm Income	315,880	297,623	294,550	509,699	321,616
Total Commodity Insurance Indemnities	86,954	154,471	115,667	304,365	195,223
Federal Commodity Insurance Indemnities.....	74,576	129,204	75,962	235,764	116,564
Net Cash Rent Received by Operator Landlords ¹	12,580	18,530	15,900	11,028	5,724
Value of Agricultural Sector Production	5,097,859	4,733,845	4,309,587	4,020,378	4,402,429
Intermediate Product Expenses ²	2,542,726	2,183,200	2,000,340	2,246,087	2,131,856
Farm Origin	709,498	604,562	470,193	559,235	579,601
Feed Purchases.....	374,446	320,578	259,226	274,310	243,652
Livestock & Poultry Purchases.....	202,725	192,454	106,666	118,658	128,115
Seed Purchases	132,327	91,530	104,301	166,267	207,834
Manufactured Inputs.....	938,146	823,071	758,385	817,263	773,420
Electricity	69,318	75,929	58,140	87,139	105,487
Fertilizer, Lime, & Soil Conditioners	374,424	364,668	313,693	303,592	289,221
Pesticides	215,265	189,617	201,227	209,830	173,254
Fuel & Oils.....	279,138	192,856	185,326	216,701	205,457
Other Intermediate Expenses ²	895,082	755,567	771,762	869,590	778,835
Machine Hire & Custom Work.....	61,489	40,405	51,001	57,066	54,477
Marketing, Storage, & Transportation.....	103,593	82,158	99,253	91,055	62,688
Repair & Maintenance ²	283,364	251,779	219,502	279,629	248,766
Miscellaneous Expenses ²	446,637	381,226	402,006	441,839	412,905
Total Insurance Premiums ³	156,844	129,940	129,786	148,589	163,839
Federal Commodity Insurance Premiums	57,888	57,747	55,042	63,525	73,212
Irrigation.....	27,822	29,845	29,325	29,625	21,566
Contract Labor	54,512	29,447	45,210	30,435	26,518
Net Government Transactions	-92,047	-92,400	28,169	184,580	160,530
Direct Government Payments.....	158,925	131,273	235,107	374,556	340,924
Property Taxes & Fees ²	250,972	223,672	206,938	189,976	180,395
Motor Vehicle Registration & Licensing Fees	15,667	14,140	14,687	15,557	18,004
Gross Value Added	2,408,574	2,428,797	2,292,206	1,928,436	2,404,584
Capital Consumption ²	936,698	730,800	799,009	606,395	521,648
Net Value Added	1,471,876	1,697,997	1,493,196	1,322,040	1,882,936
Factor Payments to Stakeholders	808,314	762,441	800,044	789,165	778,184
Hired Labor & Non-Cash Employee Compensation	285,163	239,760	275,345	293,303	292,697
Net Rent Paid to Operator Landlords.....	32,139	30,577	28,550	27,331	21,917
Net Rent Paid to Non-Operator Landlords	211,724	201,438	188,081	180,055	144,388
Total Interest Expenses ²	279,287	290,665	308,068	288,476	319,181
Net farm income	663,562	935,556	693,152	532,875	1,104,753

Data as of August 30, 2019, NA = Data are not available/applicable. Values are rounded to the nearest thousand.

¹ Share rent income is included in cash receipts.

² Includes expenses associated with operator dwellings.

³ Includes federal and private crop and livestock insurance premiums as well as casualty, hail, motor vehicle and all other insurance premiums.

Source: USDA/ERS Farm Income and Wealth Statistics: <https://www.ers.usda.gov/data-products/farm-income-and-wealth-statistics.aspx>

Farm Income & Expenses by Counties & Districts – Montana: 2017

County & District	Cash Receipts		Other Farm Income (1,000 Dollars)	Government Payments (1,000 Dollars)	Production Expenses (1,000 Dollars)	Gross Farm Income (1,000 Dollars)	Realized Net Farm Income (1,000 Dollars)
	Livestock & Products (1,000 Dollars)	Crops (1,000 Dollars)					
Deer Lodge	3,466	2,156	444	204	6,100	6,066	-34
Flathead.....	7,087	32,951	10,660	1,536	46,893	50,698	3,805
Granite.....	15,087	3,969	2,851	474	17,940	21,907	3,967
Lake.....	30,794	38,203	13,959	1,985	76,197	82,956	6,759
Lincoln.....	2,520	1,687	5,812	191	10,475	10,019	-456
Mineral.....	866	333	352	62	1,778	1,551	-227
Missoula.....	9,369	6,322	20,948	295	37,021	36,639	-382
Powell.....	25,237	8,345	4,302	756	37,428	37,884	456
Ravalli.....	23,783	13,307	6,286	297	55,260	43,376	-11,884
Sanders.....	8,264	7,548	2,905	369	19,149	18,717	-432
NORTHWEST	126,473	114,821	68,519	6,169	308,241	309,813	1,572
Blaine.....	41,090	43,641	28,501	11,931	104,392	113,232	8,840
Chouteau.....	26,377	127,932	49,216	29,450	179,655	203,525	23,870
Glacier.....	38,241	55,754	26,326	7,598	97,201	120,321	23,120
Hill.....	25,269	131,246	36,956	22,684	150,553	193,471	42,918
Liberty.....	16,173	67,540	20,635	13,868	80,831	104,348	23,517
Phillips.....	34,915	28,405	23,795	12,703	87,236	87,115	-121
Pondera.....	30,082	60,731	29,226	14,081	113,458	120,039	6,581
Teton.....	56,866	74,524	30,089	13,365	136,574	161,479	24,905
Toole.....	22,234	63,899	27,385	14,873	94,337	113,518	19,181
NORTH CENTRAL	291,247	653,672	272,129	140,553	1,044,237	1,217,048	172,811
Daniels.....	7,113	30,658	24,179	12,431	86,289	61,950	-24,339
Dawson.....	22,955	25,603	21,904	12,435	83,697	70,462	-13,235
Garfield.....	43,740	16,969	17,954	8,245	65,423	78,663	13,240
McCone.....	24,295	38,192	24,095	13,021	98,556	86,582	-11,974
Richland.....	42,795	75,498	22,987	10,663	136,265	141,280	5,015
Roosevelt.....	12,476	36,803	37,774	15,754	115,563	87,053	-28,510
Sheridan.....	14,190	61,529	31,272	13,607	96,853	106,991	10,138
Valley.....	30,488	41,004	39,611	18,848	129,584	111,103	-18,481
NORTHEAST	198,052	326,256	219,776	105,004	812,230	744,084	-68,146
Broadwater.....	17,084	21,870	11,657	3,491	45,741	50,611	4,870
Cascade.....	56,363	50,325	19,591	9,822	112,359	126,279	13,920
Fergus.....	68,941	62,762	25,695	15,040	141,388	157,398	16,010
Golden Valley.....	13,688	8,985	4,734	3,052	25,812	27,407	1,595
Judith Basin.....	60,760	27,648	13,515	5,052	68,972	101,923	32,951
Lewis & Clark.....	29,118	28,168	8,748	1,201	54,241	66,034	11,793
Meagher.....	28,821	8,937	2,910	827	32,252	40,668	8,416
Musselshell.....	25,948	8,176	7,223	3,655	42,224	41,347	-877
Petroleum.....	18,324	7,556	5,544	1,735	26,779	31,424	4,645
Wheatland.....	35,874	9,252	5,937	3,278	44,063	51,063	7,000
CENTRAL	453,278	256,050	104,458	44,694	678,216	813,786	135,570
Beaverhead.....	115,441	44,241	10,561	1,032	130,126	170,243	40,117
Gallatin.....	47,239	109,343	19,208	4,071	123,171	175,790	52,619
Jefferson.....	16,846	5,093	2,494	692	21,474	24,433	2,959
Madison.....	51,415	33,995	11,669	1,092	86,405	97,079	10,674
Silver Bow.....	3,202	934	977	19	4,485	5,113	628
SOUTHWEST	234,143	193,606	44,909	6,906	365,661	472,658	106,997
Big Horn.....	52,326	44,368	18,811	7,279	105,413	115,505	10,092
Carbon.....	48,102	22,534	9,293	2,388	83,637	79,929	-3,708
Park.....	24,105	14,404	17,737	862	50,748	56,246	5,498
Stillwater.....	41,793	11,878	17,568	5,217	57,904	71,239	13,335
Sweet Grass.....	27,705	4,713	4,943	885	47,183	37,361	-9,822
Treasure.....	22,873	20,557	5,345	1,350	38,017	48,775	10,758
Yellowstone.....	151,616	59,375	20,894	8,098	195,750	231,885	36,135
SOUTH CENTRAL.....	368,520	177,829	94,591	26,079	578,652	640,940	62,288
Carter.....	66,680	9,125	18,837	10,093	74,941	94,642	19,701
Custer.....	93,300	20,011	13,779	6,780	107,800	127,090	19,290
Fallon.....	41,286	15,950	11,107	6,617	58,968	68,343	9,375
Powder River.....	51,400	7,077	11,593	6,235	62,356	70,070	7,714
Prairie.....	15,195	12,582	7,263	4,571	32,045	35,040	2,995
Rosebud.....	61,694	21,598	12,965	5,304	96,243	96,257	14
Wibaux.....	12,395	20,327	5,462	3,092	29,766	38,184	8,418
SOUTHEAST	341,950	106,670	81,006	42,692	462,119	529,626	67,507
MONTANA.....	1,915,306	1,806,533	886,484	374,556	4,164,971	4,608,323	443,352

(L) Less than \$50,000, but the estimates for this item are included in the totals.

¹ Payments of less than \$50,000 are included in State totals.

SOURCE: Bureau of Economic Analysis, U.S. Department of Commerce, Washington, D.C.

Cash Rent: Dollars per Acre by Counties & Districts – Montana: 2016 & 2017

County & Districts ¹	Irrigated		Non-Irrigated		Pasture	
	2016	2017	2016	2017	2016	2017
	(Dollars/Acre)	(Dollars/Acre)	(Dollars/Acre)	(Dollars/Acre)	(Dollars/Acre)	(Dollars/Acre)
Deer Lodge	(D)	(D)	(D)	(D)	(D)	13.50
Flathead	50.00	49.00	35.50	34.00	(D)	(D)
Granite	77.50	69.00	(D)	(D)	6.20	(D)
Lake	60.00	60.00	26.50	27.00	10.00	7.00
Lincoln	(D)	(D)	(D)	(D)	(D)	(D)
Mineral	(D)	(D)	(D)	(D)	(D)	(D)
Missoula	48.00	45.00	14.00	13.00	12.50	17.00
Powell	51.50	58.00	18.00	(D)	5.10	4.10
Ravalli	62.00	62.00	(D)	16.50	25.50	14.50
Sanders	(D)	(D)	20.50	17.50	5.60	4.30
Other	39.00	48.50	18.50	16.50	12.50	6.40
Northwest	58.50	59.00	27.50	24.50	8.80	8.40
Blaine	40.50	44.00	21.00	23.50	5.20	8.20
Chouteau	83.00	74.00	31.00	28.50	7.30	6.50
Glacier	30.50	30.50	22.00	21.00	4.70	5.60
Hill	(D)	(D)	28.50	24.50	9.50	7.10
Liberty	(D)	(D)	25.00	26.00	7.60	7.60
Phillips	35.50	35.50	23.00	22.50	4.90	5.90
Pondera	63.00	55.00	35.50	36.50	7.90	10.50
Teton	88.00	84.50	35.50	33.50	9.50	6.80
Toole	(D)	(D)	29.00	29.50	6.20	5.30
Other	44.00	57.50	-	-	-	-
North Central	61.50	62.00	27.50	27.00	5.80	6.60
Daniels	(D)	(D)	28.00	26.50	6.60	6.40
Dawson	99.50	102.00	24.50	25.50	5.50	3.40
Garfield	(D)	(D)	15.50	13.50	9.00	5.40
McCone	(D)	49.50	22.50	22.00	9.30	9.00
Richland	124.00	121.00	23.50	23.50	6.60	5.60
Roosevelt	(D)	(D)	27.50	26.50	5.60	4.20
Sheridan	(D)	(D)	32.50	33.00	5.40	6.80
Valley	43.00	41.50	25.50	26.50	5.50	5.00
Other	50.50	55.50	-	-	-	-
Northeast	81.00	66.50	27.00	27.50	6.90	5.40
Broadwater	116.00	120.00	19.00	(D)	4.60	7.70
Cascade	65.00	68.00	27.50	32.00	10.00	8.30
Fergus	(D)	65.00	26.50	23.00	11.00	12.50
Golden Valley	(D)	(D)	19.00	(D)	(D)	5.10
Judith Basin	(D)	(D)	27.50	29.00	10.50	12.50
Lewis & Clark	79.50	89.00	42.50	34.00	7.10	7.00
Meagher	(D)	(D)	(D)	(D)	6.00	8.60
Musselshell	(D)	(D)	14.00	13.00	4.50	4.50
Petroleum	(D)	(D)	(D)	18.50	(D)	8.00
Wheatland	(D)	42.50	14.00	12.50	6.80	7.90
Other	63.50	36.50	18.00	19.00	6.20	-
Central	83.00	76.50	25.50	23.50	7.30	7.80
Beaverhead	92.50	94.00	15.00	(D)	12.50	10.50
Gallatin	95.50	105.00	38.00	37.50	12.50	10.50
Jefferson	41.50	(D)	12.00	(D)	10.50	4.70
Madison	80.00	85.50	(D)	(D)	9.40	10.00
Silver Bow	73.00	(D)	(D)	(D)	11.50	9.00
Other	-	50.50	27.50	32.50	-	-
Southwest	90.00	92.50	30.50	34.50	11.00	8.00
Big Horn	80.00	83.50	20.00	23.00	5.20	5.80
Carbon	96.00	86.00	15.50	20.00	8.00	8.60
Park	60.00	58.00	17.50	20.00	7.40	8.60
Stillwater	60.50	57.00	19.50	17.50	7.70	5.40
Sweet Grass	56.50	50.00	16.50	14.00	8.70	4.80
Treasure	121.00	120.00	21.00	24.50	3.70	4.00
Yellowstone	103.00	104.00	21.00	22.00	5.80	5.90
Other	-	-	-	-	-	-
South Central	94.50	90.00	19.50	21.00	6.00	5.90
Carter	(D)	(D)	(D)	20.00	7.10	5.00
Custer	76.00	78.00	(D)	17.50	4.50	4.10
Fallon	(D)	(D)	18.50	17.50	6.90	9.10
Powder River	(D)	(D)	(D)	16.00	6.70	5.00
Prairie	(D)	93.50	25.50	21.50	8.50	5.40
Rosebud	94.50	96.50	17.00	14.00	3.90	4.40
Wibaux	(D)	(D)	24.00	24.00	7.50	8.50
Other	95.00	-	19.00	-	-	-
Southeast	88.00	90.00	20.00	18.50	5.70	5.40
Montana	78.00	75.00	26.50	26.00	6.60	6.30

(D) Withheld to avoid disclosing data for individual operations.

- Represents zero.

¹ Counties with no acres planted or counties that are combined into "Other" counties/districts to avoid disclosure of individual information.

Cash Rent: Dollars per Acre by Counties & Districts – Montana: 2018 & 2019

County & Districts ¹	Irrigated Cropland		Non-Irrigated Cropland		Pasture	
	2018 ²	2019	2018 ²	2019	2018 ²	2019
	(Dollars/Acre)	(Dollars/Acre)	(Dollars/Acre)	(Dollars/Acre)	(Dollars/Acre)	(Dollars/Acre)
Deer Lodge.....	-	(D)	-	(D)	-	(D)
Flathead.....	-	64.00	-	37.00	-	(D)
Granite.....	-	79.00	-	23.00	-	8.00
Lake.....	-	71.00	-	27.00	-	8.30
Lincoln.....	-	(D)	-	(D)	-	(D)
Mineral.....	-	(D)	-	(D)	-	(D)
Missoula.....	-	36.00	-	15.00	-	10.50
Powell.....	-	(D)	-	(D)	-	3.70
Ravalli.....	-	66.00	-	(D)	-	15.00
Sanders.....	-	65.00	-	25.00	-	3.80
Other.....	-	49.50	-	22.50	-	13.00
Northwest.....	-	65.00	-	31.00	-	7.20
Blaine.....	-	(D)	-	24.00	-	7.20
Chouteau.....	-	(D)	-	31.00	-	7.40
Glacier.....	-	26.00	-	22.00	-	5.80
Hill.....	-	(D)	-	26.00	-	6.60
Liberty.....	-	(D)	-	26.00	-	7.30
Phillips.....	-	38.00	-	21.00	-	4.70
Pondera.....	-	66.00	-	39.00	-	13.00
Teton.....	-	84.00	-	36.00	-	8.10
Toole.....	-	(D)	-	28.00	-	6.80
Other.....	-	71.00	-	-	-	-
North Central.....	-	66.00	-	28.00	-	6.40
Daniels.....	-	(D)	-	27.00	-	5.50
Dawson.....	-	109.00	-	25.50	-	4.30
Garfield.....	-	(D)	-	20.00	-	5.10
McCone.....	-	(D)	-	24.00	-	7.30
Richland.....	-	130.00	-	23.00	-	6.20
Roosevelt.....	-	(D)	-	26.50	-	6.00
Sheridan.....	-	(D)	-	33.00	-	6.40
Valley.....	-	50.00	-	25.00	-	7.30
Other.....	-	57.50	-	-	-	-
Northeast.....	-	77.50	-	27.50	-	5.60
Broadwater.....	-	152.00	-	21.00	-	4.20
Cascade.....	-	75.00	-	37.00	-	9.00
Fergus.....	-	69.00	-	25.00	-	8.70
Golden Valley.....	-	(D)	-	(D)	-	4.90
Judith Basin.....	-	28.00	-	30.00	-	11.00
Lewis & Clark.....	-	70.00	-	(D)	-	5.50
Meagher.....	-	(D)	-	(D)	-	7.80
Musselshell.....	-	(D)	-	17.00	-	5.00
Petroleum.....	-	(D)	-	(D)	-	6.00
Wheatland.....	-	(D)	-	(D)	-	7.30
Other.....	-	45.50	-	18.00	-	-
Central.....	-	96.00	-	28.00	-	7.80
Beaverhead.....	-	85.00	-	(D)	-	14.00
Gallatin.....	-	107.00	-	38.00	-	10.00
Jefferson.....	-	(D)	-	(D)	-	4.30
Madison.....	-	74.00	-	36.00	-	14.00
Silver Bow.....	-	(D)	-	(D)	-	8.00
Other.....	-	44.50	-	27.00	-	-
Southwest.....	-	92.50	-	34.50	-	8.80
Big Horn.....	-	89.00	-	18.00	-	5.30
Carbon.....	-	84.00	-	27.00	-	8.50
Park.....	-	70.00	-	19.00	-	6.00
Stillwater.....	-	75.00	-	22.00	-	6.20
Sweet Grass.....	-	45.00	-	15.00	-	5.40
Treasure.....	-	125.00	-	18.00	-	4.60
Yellowstone.....	-	115.00	-	26.50	-	6.00
Other.....	-	-	-	-	-	-
South Central.....	-	93.00	-	20.00	-	5.80
Carter.....	-	(D)	-	18.00	-	7.60
Custer.....	-	73.00	-	15.00	-	10.00
Fallon.....	-	(D)	-	21.00	-	8.70
Powder River.....	-	(D)	-	12.00	-	6.20
Prairie.....	-	(D)	-	21.50	-	8.60
Rosebud.....	-	88.00	-	20.00	-	4.30
Wibaux.....	-	(D)	-	27.00	-	5.80
Other.....	-	75.00	-	-	-	-
Southeast.....	-	82.00	-	20.00	-	7.30
Montana.....	-	82.00	26.50	27.00	6.30	6.60

(D) Withheld to avoid disclosing data for individual operations.

- Represents zero.

¹ Counties with no acres planted or counties that are combined into "Other" counties/districts to avoid disclosure of individual information.

² County Cash Rents estimates not set in 2018.

Farm Real Estate Values, Annual Cash Rent per Acre, & Rent to Value – Montana: 2010-2019

Year	Land Value					Annual Cash Rent			Rent to Value ¹		
	All	Cropland			Pasture	Cropland		Pasture	Cropland		Pasture
		All	Non-Irrigated	Irrigated		Non-Irrigated	Irrigated		Non-Irrigated	Irrigated	
	Dollars/Acre					Dollars/Acre					
2010	700	779	600	2,690	530	22.00	85.00	4.80	3.7	3.2	0.9
2011	710	806	630	2,690	530	23.50	72.00	5.60	3.7	2.7	1.1
2012	760	852	680	2,690	570	23.00	80.00	5.90	3.4	3.0	1.0
2013	790	890	710	2,780	580	23.50	86.00	6.00	3.3	3.1	1.0
2014	860	987	800	2,950	640	25.50	81.00	5.60	3.2	2.7	0.9
2015	890	997	810	2,960	650	26.00	83.00	5.80	3.2	2.8	0.9
2016	900	1,010	820	2,980	650	26.50	78.00	6.60	3.2	2.6	1.0
2017	920	1,020	830	2,980	660	26.00	75.00	6.30	3.1	2.5	1.0
2018	920	1,030	840	3,000	670	26.50	(D)	6.30	3.2		0.9

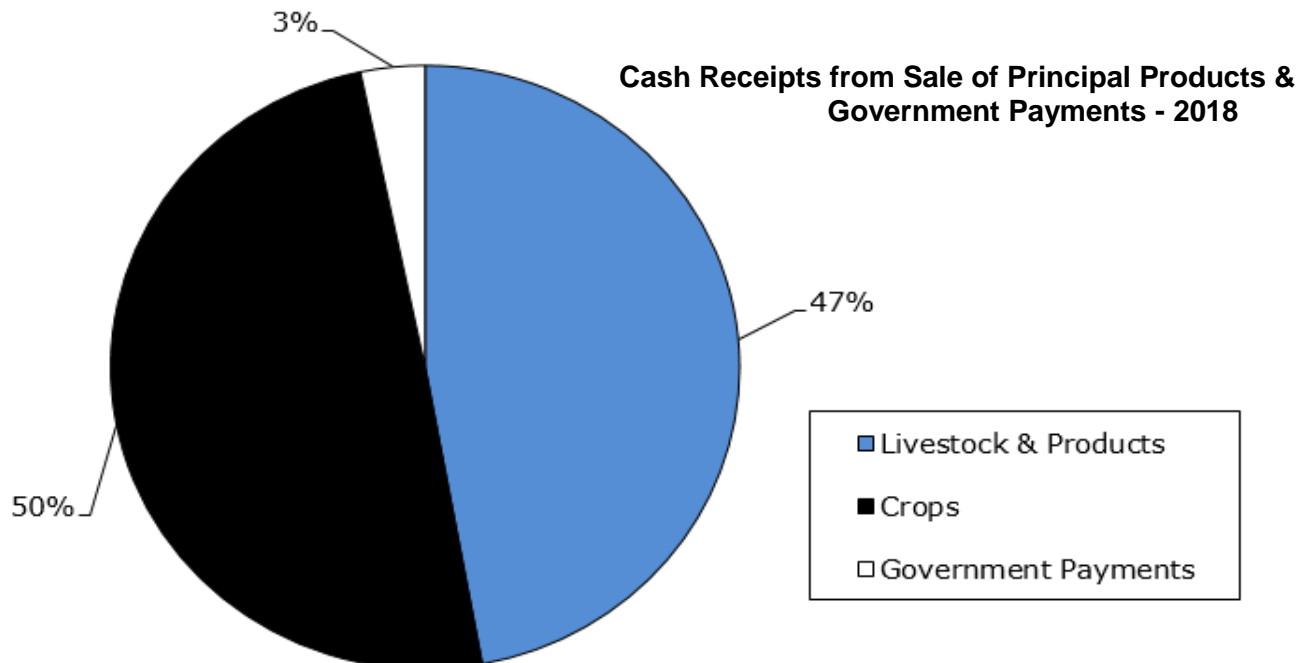
(D) Withheld to avoid disclosing data for individual operations.

¹ Rent to Value is rent as a percentage of per acre value of rented land.

Cash Receipts from Sale of Principal Products and Government Payments

Year	Livestock & Livestock Products	Crops	Total Receipts From Marketings (1,000 Dollars)	Government Payments	Total All Cash Receipts
2009.....	1,140,332	1,654,032	2,794,364	256,273	3,121,476
2010.....	1,282,444	1,755,737	3,038,181	327,112	3,667,294
2011.....	1,439,981	2,260,909	3,700,890	298,649	4,302,520
2012.....	1,574,278	2,342,499	3,916,777	239,263	4,753,601
2013.....	1,753,540	2,356,371	4,109,910	250,350	5,053,607
2014.....	2,251,104	2,353,754	4,604,857	158,925	5,097,856
2015.....	1,869,295	1,886,329	3,755,623	131,273	4,733,845
2016.....	1,616,941	2,031,497	3,648,438	235,107	4,309,587
2017.....	1,721,136	1,817,612	3,538,749	374,556	4,020,378
2018.....	1,605,796	1,888,031	3,493,827	340,924	4,402,429

Details may not add due to rounding.



Cash Receipts from Marketing by Commodities – Montana: 2014-2018

Montana	2014	2015	2016	2017	2018
	\$1,000	\$1,000	\$1,000	\$1,000	\$1,000
All Commodities	4,604,857	3,755,623	3,648,438	3,538,749	3,493,827
Animals & Products	2,251,104	1,869,295	1,616,941	1,721,136	1,605,796
Meat Animals	2,062,542	1,699,046	1,461,379	1,558,359	1,422,400
Cattle & Calves	1,984,463	1,639,423	1,412,058	1,504,559	1,365,683
Hogs	78,079	59,623	49,321	53,800	56,717
Dairy Products, Milk	65,120	43,806	45,820	49,525	43,200
Poultry & Eggs	23,694	34,231	19,855	20,660	41,769
Chicken Eggs	12,775	22,500	7,870	11,192	33,674
Farm Chickens.....	13	15	13	8	7
Turkeys	10,906	11,716	11,971	9,460	8,088
Miscellaneous Animals & Products	99,748	92,212	89,888	92,592	98,427
Sheep & Lambs	NA	NA	NA	NA	NA
Honey	29,795	23,509	21,670	23,386	28,262
Mohair.....	5	5	5	5	5
Other Animals & Products	66,545	65,202	64,793	65,877	66,135
All Other Animals & Products...	65,060	64,725	64,380	64,810	65,450
Mink Pelts	1,485	477	413	1,067	685
Wool	3,403	3,496	3,420	3,325	4,025
Crops.....	2,353,754	1,886,329	2,031,497	1,817,612	1,888,031
Food Grains	1,331,875	910,915	918,994	816,857	875,770
Wheat	1,331,875	910,915	918,994	816,857	875,770
Feed Crops	662,825	574,513	525,338	556,340	572,185
Barley	239,822	227,938	177,159	174,403	121,479
Corn.....	31,772	23,505	20,573	18,282	16,018
Hay	390,240	320,572	324,448	362,784	433,082
Oats.....	990	2,498	3,158	871	1,606
Oil Crops	37,122	31,174	30,062	40,442	27,546
Flaxseed.....	5,075	3,915	4,424	3,646	4,478
Miscellaneous Oil Crops.....	20,200	16,715	17,796	31,927	18,311
Canola.....	14,883	11,875	10,198	21,070	18,311
Mustard Seed.....	5,317	4,839	7,599	10,856	NA
Safflower.....	11,847	10,544	7,841	4,869	4,756
Vegetables & Melons	193,961	221,489	407,366	265,931	276,566
Dry Beans.....	12,548	16,145	34,591	70,164	110,406
Dry Peas.....	101,270	90,168	120,445	42,970	49,589
Dry Peas, Austrian Winter	1,478	848	1,690	576	775
Dry Peas, Edible	99,792	89,320	118,755	42,394	48,814
Lentils	40,151	73,993	210,131	110,182	73,872
Potatoes	39,992	41,184	42,199	42,615	42,699
Potatoes, Fall	39,992	41,184	42,199	42,615	42,699
Fruits & Nuts	3,991	1,769	NA	NA	NA
Cherries	3,991	1,769	NA	NA	NA
Cherries, Sweet.....	3,991	1,769	NA	NA	NA
All Other Crops.....	123,980	146,468	149,737	138,042	135,965
Sugar Beets.....	54,838	71,743	70,198	57,913	61,220
Mushrooms.....	3,132	3,085	2,869	3,429	3,450
Miscellaneous Crops	66,010	71,640	76,670	76,700	71,295

Data as of August 30, 2019

'NA' in a forecast year indicates that insufficient data exists to forecast cash receipts for that commodity, and the amounts are instead included in the aggregate forecast totals. 'NA' in an estimate year indicates that commodity survey data is not available, and the amounts are instead included in either the 'miscellaneous crops' or 'all other animals and products' category, depending on the commodity type.

Values are rounded to the nearest thousand.

Source: USDA/ERS Farm Income and Wealth Statistics: <https://www.ers.usda.gov/data-products/farm-income-and-wealth-statistics.aspx>

Monthly Prices Received by Farmers, Select Commodities – Montana: 2014-2018

Commodity & Year	Jan	Feb	Mar	Apr	May	Jun	Jul	Aug	Sep	Oct	Nov	Dec
All Wheat	(Dollars/Bushel)											
2014	6.81	6.57	6.57	6.60	6.79	6.79	6.53	6.22	5.86	5.87	6.82	6.36
2015	6.76	6.48	6.14	6.18	5.67	5.42	5.31	4.91	4.67	4.95	5.13	5.17
2016	5.05	4.74	4.53	4.62	4.62	4.40	4.62	4.05	4.04	4.19	4.40	4.52
2017	4.47	4.51	4.57	4.52	4.57	4.63	5.00	5.13	5.14	5.26	5.42	5.30
2018	5.34	5.44	5.35	5.58	5.80	5.74	5.67	5.32	5.21	5.30	5.18	5.36
Winter Wheat												
2014	7.02	6.85	6.83	6.78	6.89	7.08	6.51	6.18	5.74	5.45	5.71	5.99
2015	6.31	5.85	5.57	5.75	5.54	5.57	5.21	4.80	4.52	4.75	4.78	4.91
2016	4.80	4.49	4.44	4.32	4.34	4.08	4.18	3.73	3.61	3.47	3.67	3.95
2017	4.09	3.93	3.78	3.92	3.94	4.01	4.41	4.39	4.15	4.55	4.78	4.78
2018	4.74	5.02	4.96	5.18	5.28	5.37	5.37	5.22	5.13	5.20	4.86	5.36
Spring Wheat												
2014	6.59	6.41	6.42	6.48	6.75	6.56	6.32	6.06	5.80	6.05	6.58	6.21
2015	6.51	5.91	6.01	6.44	5.56	5.12	5.22	4.69	4.79	4.82	5.11	4.95
2016	4.89	4.79	4.47	4.70	4.72	4.63	4.75	4.36	4.29	4.38	4.56	4.77
2017	4.67	4.92	5.03	5.00	4.96	5.42	5.92	6.17	6.13	5.98	6.27	6.33
2018	6.42	6.36	6.31	6.27	6.39	6.17	6.04	5.70	5.24	5.42	5.61	5.36
Durum Wheat												
2014	7.01	6.57	6.55	6.81	(D)	(D)	7.63	7.74	8.37	(D)	10.90	10.60
2015	(D)	10.80	10.20	(D)	8.22	(D)	(D)	(S)	(D)	(D)	(D)	(D)
2016	(D)	(D)	(D)	(D)	(D)	6.36	6.36	(D)	(D)	(D)	5.91	5.75
2017	6.07	5.98	5.91	5.97	5.85	6.03	(D)	6.87	(D)	(D)	(D)	(D)
2018	(D)	(D)	6.22	(D)	6.04	6.03	5.29	5.39	5.62	5.44	4.98	5.31
All Barley												
2014	6.49	6.38	6.14	5.82	5.62	5.95	5.53	6.02	5.36	5.54	4.98	4.90
2015	4.60	5.05	4.65	5.07	4.45	4.82	5.31	5.78	6.19	5.85	5.86	6.06
2016	5.88	5.97	5.40	5.22	(D)	4.37	5.22	5.28	5.16	5.26	4.93	5.19
2017	5.10	5.15	5.01	5.15	5.01	4.19	4.48	4.63	4.02	3.80	4.27	4.21
2018	4.34	4.05	4.49	4.32	4.51	3.94	3.59	4.53	4.89	4.17	4.94	4.62
Feed Barley												
2014	3.36	3.20	3.38	3.16	3.39	3.36	2.99	2.60	2.64	2.41	2.25	2.71
2015	2.36	2.43	2.71	2.52	2.51	2.49	2.62	2.76	2.65	2.78	2.80	(D)
2016	2.66	2.76	(D)	(D)	(D)	2.85	2.63	2.66	2.43	(D)	2.57	2.38
2017	2.38	2.61	2.34	2.44	2.19	(D)	2.29	2.63	2.34	2.52	2.67	2.66
2018	2.60	2.42	2.77	2.73	(D)	3.11	3.51	3.78	2.88	3.46	4.10	3.85
Malt Barely												
2014	6.58	6.49	6.27	5.97	5.95	6.14	6.06	6.17	5.72	5.93	5.69	5.58
2015	5.59	5.82	5.65	6.33	5.72	6.20	6.10	6.14	6.22	5.93	6.04	6.11
2016	5.97	6.10	5.67	5.61	(D)	(D)	5.45	5.36	5.23	5.29	5.00	5.22
2017	5.13	5.16	5.06	5.28	5.12	4.29	4.67	4.68	4.33	4.16	4.38	4.38
2018	4.45	4.50	4.51	4.50	(D)	4.40	(D)	4.61	4.97	4.29	4.96	4.63
Alfalfa Hay	Dollars/Ton											
2014	145.00	140.00	140.00	140.00	135.00	130.00	125.00	130.00	130.00	130.00	130.00	125.00
2015	125.00	125.00	125.00	125.00	125.00	125.00	130.00	135.00	125.00	125.00	125.00	120.00
2016	115.00	120.00	120.00	125.00	130.00	130.00	130.00	135.00	135.00	135.00	135.00	130.00
2017	135.00	140.00	140.00	130.00	130.00	135.00	135.00	145.00	145.00	145.00	145.00	140.00
2018	135.00	140.00	150.00	160.00	155.00	160.00	160.00	150.00	140.00	140.00	145.00	145.00
Other Hay												
2014	120.00	110.00	110.00	115.00	105.00	110.00	110.00	120.00	120.00	120.00	120.00	115.00
2015	115.00	120.00	115.00	115.00	115.00	120.00	125.00	125.00	120.00	120.00	120.00	110.00
2016	110.00	110.00	110.00	115.00	115.00	120.00	120.00	125.00	125.00	125.00	125.00	130.00
2017	125.00	130.00	130.00	130.00	130.00	135.00	135.00	140.00	140.00	140.00	140.00	135.00
2018	130.00	130.00	130.00	135.00	135.00	135.00	135.00	135.00	125.00	125.00	130.00	130.00

(D) Withheld to avoid disclosing data for individual operations.

(S) Insufficient number of reports to establish an estimate.

Marketing Year Average Prices, by Commodity – Montana: 2010-2018

Commodity	Unit	2010	2011	2012	2013	2014	2015	2016	2017	2018
Wheat, All	Bu	6.29	7.68	8.15	6.87	6.23	4.83	4.43	5.34	5.30
Wheat, Winter.....	Bu	5.81	6.74	7.96	7.05	5.86	4.59	3.88	4.76	5.15
Wheat, Spring.....	Bu	6.87	8.36	8.39	6.70	6.08	4.80	4.76	6.21	5.50
Corn, Grain	Bu	6.00	6.47	7.21	4.27	3.77	4.01	4.15	3.41	3.50
Barley, All	Bu	4.08	5.27	6.41	6.32	5.33	5.82	5.12	4.34	4.70
Dry Beans ¹	Cwt	27.00	34.70	37.60	30.10	20.80	28.90	26.00	33.80	24.60
Sugarbeets	Ton	64.00	71.90	63.80	39.40	49.70	52.90	36.60	41.30	(²)
Oats	Bu	2.66	3.04	3.74	2.87	3.30	3.33	3.20	2.86	2.90
Hay, All (Baled)....	Ton	80.00	98.00	143.00	138.00	126.00	124.00	132.00	141.00	145.00
Alfalfa.....	Ton	79.00	98.00	146.00	141.00	127.00	125.00	134.00	142.00	148.00
Other Hay	Ton	83.00	94.00	126.00	122.00	117.00	117.00	126.00	136.00	131.00
Potatoes, All	Cwt	11.50	12.50	12.00	12.90	12.80	13.00	12.70	12.80	13.00
Fall.....	Cwt	11.50	12.50	12.00	12.90	12.80	13.00	12.70	12.80	13.00
Milk Cows	Hd	1,340.00	1,390.00	1,390.00	1,400.00	1,680.00	1,880.00	1,710.00	1,590.00	1,410.00
Milk, All	Cwt	16.90	19.90	18.00	18.70	22.00	14.90	15.80	17.50	16.00

¹ Prices applies on clean basis.

² Prices available 2020.

Marketing of Major Montana Crops: Estimated Percent of Monthly Farm Sales – Montana: 2013-2018

Marketing Year	Jul	Aug	Sep	Oct	Nov	Dec	Jan	Feb	Mar	Apr	May	Jun
All Wheat	Percent											
2013-2014	3	7	11	11	9	9	10	7	11	9	5	8
2014-2015	8	11	10	9	7	12	10	8	9	6	5	5
2015-2016	8	8	3	7	6	12	10	5	11	9	8	13
2016-2017	13	13	7	6	7	5	7	5	11	9	6	11
2017-2018	11	12	9	5	7	11	10	6	7	8	5	9
All Barley	Percent											
2013-2014	3	20	11	14	10	6	11	6	7	3	4	5
2014-2015	7	31	11	5	6	5	5	8	9	4	5	4
2015-2016	9	11	7	8	8	26	9	12	5	2	1	2
2016-2017	6	15	5	6	8	9	7	24	8	4	5	3
2017-2018	17	13	5	3	4	13	9	6	15	7	4	4
Oats	Percent											
2013-2014	(NA)	(NA)	4	65	15	(NA)	(NA)	(NA)	(NA)	8	8	(NA)
2014-2015	(NA)	(NA)	8	(NA)	10	6	(NA)	5	(NA)	(NA)	65	6
2015-2016	(NA)	(NA)	(NA)	17	13	(NA)	28	12	(NA)	23	(NA)	7
2016-2017	14	19	17	(NA)	10	13	8	11	4	1	(NA)	3
2017-2018	(NA)	8	8	(NA)	3	(NA)	5	5	(NA)	56	(NA)	15
Marketing Year	Jun	Jul	Aug	Sep	Oct	Nov	Dec	Jan	Feb	Mar	Apr	May
All Hay	Percent											
2013-2014	4	11	13	12	9	11	12	9	8	6	3	2
2014-2015	4	11	14	12	9	10	12	9	8	6	3	2
2015-2016	4	16	12	9	9	11	11	9	8	6	3	2
2016-2017	4	13	12	11	9	11	12	9	8	6	3	2
2017-2018	4	13	12	11	9	11	12	9	8	6	3	2

(NA) Not Available.

Record Highs & Lows: Acreage, Yield, & Production of Crops – Montana

	Units	Record High		Record Low		Record Began
		(Quantity)	(Year)	(Quantity)	(Year)	(Year)
Barley						
Harvested	(1,000 Acres)	2,180	1986	2	1882, 1883	1879
Yield	(Bushels/Acre)	62.0	2010	12.0	1919	1879
Production	(1,000 Bushels)	94,500	1987	79	1883	1879
Corn for Grain						
Harvested	(1,000 Acres)	101	1923	2	1892-1897	1879
Yield	(Bushels/Acre)	152.0	2009	8.5	1919	1879
Production	(1,000 Bushels)	8,625	2013	42	1897	1879
Corn for Silage						
Harvested	(1,000 Acres)	75	1989	2	1919, 1926-1931	1919
Yield	(Tons/Acre)	24.0	2003, 2005, 2010	1.5	1934	1919
Production	(1,000 Tons)	1,491	1978	7	1926, 1928	1919
All Dry Beans						
Harvested	(1,000 Acres)	386	2018	2	1916, 1919	1909
Yield	(Lbs/Acre)	2,280.0	1996	750.0	1917, 1924	1909
Production	(1,000 Cwt)	5,214	2018	14	1919	1909
All Hay						
Harvested	(1,000 Acres)	3,000	2005	1,125	1910	1909
Yield	(Tons/Acre)	2.23	1995	0.88	1936	1909
Production	(1,000 Tons)	6,105	2010	1,283	1910	1909
Alfalfa Hay						
Harvested	(1,000 Acres)	2,000	2011	374	1919	1919
Yield	(Tons/Acre)	2.60	1981	1.20	1935	1919
Production	(1,000 Tons)	4,485	2010	598	1919	1919
Other Hay						
Harvested	(1,000 Acres)	1,390	1965	650	1994	1919
Yield	(Tons/Acre)	1.80	2010	0.39	1941	1919
Production	(1,000 Tons)	2,000	2005	347	1941	1919
Oats						
Harvested	(1,000 Acres)	650	1918	16	2014	1879
Yield	(Bushels/Acre)	69.0	2014	13.5	1919	1879
Production	(1,000 Bushels)	25,650	1915	810	2012	1879
Onions						
Harvested	(1,000 Acres)	17.8	1995	700	1918	1918
Yield	(Cwt/Acre)			120	1934	1918
Production	(1,000 Cwt)	6,141	1995	97	1918	1918
All Potatoes						
Harvested	(1,000 Acres)	32	1917	2	1882	1879
Yield	(Cwt/Acre)	345	2018	45	1919	1879
Production	(1,000 Acre)	3,830	2018	163	1882	1879
Sugarbeets						
Harvested	(1,000 Acres)	83	1940	24.6	1984	1924
Yield	(Tons/Acre)	35.0	2016	9.2	1928	1924
Production	(1,000 Tons)	1,586	2016	258	1928	1924
All Wheat						
Harvested	(1,000 Acres)	6,360	1996	9	1876	1869
Yield	(Bushels/Acre)	42.4	2016	5.0	1919	1869
Production	(1,000 Bushels)	214,180	2010	162	1876	1869
Spring Wheat						
Harvested	(1,000 Acres)	4,576	1951	1,104	1969	1919
Yield	(Bushels/Acre)	38.0	2010	4.9	1919	1919
Production	(1,000 Bushels)	133,000	1995	5,695	1919	1919
Winter Wheat						
Harvested	(1,000 Acres)	3,080	1976	127	1909	1909
Yield	(Bushels/Acre)	50.0	2018	5.2	1919	1909
Production	(1,000 Bushels)	105,350	2016	2,798	1919	1909

Record Highs & Lows: Livestock, Poultry, Honey, & Mink – Montana

Unit	Record High		Record Low		Record Began (Year)
	(Quantity)	(Year)	(Quantity)	(Year)	
Cattle & Calves					
Inventory Jan. 1 (1,000 Hd)	3,380	1974	67	1867	1867
Calf Crop (Annual) (1,000 Hd)	1,640	1983	1,280	1987	1977
Beef Cows Jan. 1 ¹ (1,000 Hd)	1,746	1974	294	1938	1920
Milk Cows Jan. 1 ¹ (1,000 Hd)	215	1934	3	1867	1867
Milk Production (Annual) (Million Lbs)	793	1930	274	2018	1924
Cattle on Feed Jan. 1 (1,000 Hd)	165	1972	26	2010	1965
Hogs & Pigs					
Inventory Dec. 1 ² (1,000 Hd)	445	1943	1	1866, 1867	1866
Sheep & Lambs					
Total Inventory Jan. 1 (1,000 Hd)	4,280	1934	215	2015, 2019	1920
Breeding Inventory Jan. 1 (1,000 Hd)	4,060	1934	183	2019	1920
Lamb Crop (Annual) (1,000 Hd)	2,695	1934	180	2018	1924
Market Sheep & Lambs Jan. 1 (1,000 Hd)	40	1995	15	2010-2012	1994
Chickens					
Layers Dec. 1 (1,000 Hd)	1,000	2018	350	2008	2008
Egg Production ³ (Million Eggs)	293	2018	107	2009	2008
Honey					
Production (Annual) (1,000 Lbs)	14,946	2013	5,040	1988	1987
Mink					
Pelts Produced (1,000 Pelts)	25,730	2014	11,900	2016	2014

¹ Cows and heifers two years old and over prior to 1970; cows that have calved beginning in 1970.

² January 1, estimates discontinued in 1969. December 1, estimates beginning in 1969.

³ Annual egg production estimates cover the period December 1, previous year through November 30.

Rank & Quantity Produced, Selected Commodities – Montana, Leading State, & United States: 2018

Commodity	Unit	Montana		Leading State		United States
		Rank	Production	State	Production	
Field Crops						
Barley	(1,000 Bu)	2	33,600	Idaho	53,530	153,082
Beans, Dry Edible.....	(1,000 Cwt)	2	5,214	North Dakota	10,806	37,494
Garbanzo Beans.....	(1,000 Cwt)	1	5,138	Montana	5,138	12,742
Pinto Beans	(1,000 Cwt)	8	62	North Dakota	5,352	8,792
Dry Edible Peas.....	(1,000 Cwt)	2	5,022	North Dakota	8,030	15,929
Austrian Winter Peas.....	(1,000 Cwt)	1	76	Montana	76	124
Canola.....	(1,000 Lbs)	2	131,040	North Dakota	3,096,800	3,616,560
Corn, Grain.....	(1,000 Bu)	38	5,780	Iowa	2,508,800	14,420,101
Corn, Silage.....	(1,000 Tons)	29	740	Wisconsin	13,400	121,361
Flaxseed.....	(1,000 Bu)	2	629	North Dakota	3,792	4,466
Hay, All.....	(1,000 Tons)	5	5,595	Texas	8,374	123,600
Hay, Alfalfa.....	(1,000 Tons)	3	3,895	Idaho	4,410	52,634
Hay, Other.....	(1,000 Tons)	17	1,700	Texas	7,590	70,966
Lentils.....	(1,000 Cwt)	1	4,860	Montana	4,860	8,408
Oats.....	(1,000 Bu)	15	989	North Dakota	8,610	56,130
Potatoes, Fall	(1,000 Cwt)	12	3,830	Idaho	140,175	420,281
Safflower	(1,000 Lbs)	2	35,640	California	142,800	236,380
Sugarbeets.....	(1,000 Tons)	6	1,319	Minnesota	10,486	33,145
Wheat, All.....	(1,000 Bu)	3	197,630	North Dakota	363,483	1,884,458
Wheat, Other Spring.....	(1,000 Bu)	2	95,880	North Dakota	318,010	623,232
Wheat, Durum	(1,000 Bu)	2	23,250	North Dakota	42,463	77,287
Wheat, Winter.....	(1,000 Bu)	3	78,500	Kansas	277,400	1,183,939
Livestock ¹						
All Cattle & Calves.....	(1,000 Head)	11	2,500	Texas	13,000	94,760
All Cows ²	(1,000 Head)	9	1,460	Texas	5,200	41,119
Calf Crop	(1,000 Head)	8	1,450	Texas	4,750	36,403
Beef Cows ²	(1,000 Head)	7	1,448	Texas	4,655	31,766
Milk Cows ²	(1,000 Head)	37	12	California	1,730	9,353
Milk Production	(Mil Lbs)	36	274	California	40,413	217,575
Cattle on Feed ³	(1,000 Head)	23	40	Nebraska, Texas	2,750	14,371
All Chickens (Excl Broilers).....	(1,000 Head)	33	1,236	Iowa	72,579	527,573
All Layers.....	(1,000 Head)	33	1,000	Iowa	58,188	396,870
Egg Production ⁴	(Mil Eggs)	33	293	Iowa	16,274	109,192
All Hogs & Pigs.....	(1,000 Head)	23	192	Iowa	23,300	74,550
Breeding Hogs & Pigs	(1,000 Head)	22	33	Iowa	1,020	6,326
Pig Crop ⁴	(1,000 Head)	23	581	Iowa	25,034	133,341
Market Hogs & Pigs.....	(1,000 Head)	23	159	Iowa	22,280	68,225
Honey Production.....	(1,000 Lbs)	2	14,720	North Dakota	38,160	152,348
All Sheep & Lambs	(1,000 Head)	8	215	Texas	750	5,230
Breeding Sheep & Lambs.....	(1,000 Lambs)	7	183	Texas	590	3,820
Lamb Crop.....	(1,000 Head)	7	180	Texas	365	3,235
Market Sheep & Lambs	(1,000 Head)	10	32	California	245	1,410
Wool Production	(1,000 Lbs)	7	1,610	California, Wyoming	2,400	24,400
Miscellaneous						
Farms	(Number)	30	26,900	Texas	247,000	2,029,200
Land in Farms	(1,000 Acres)	2	58,000	Texas	127,000	899,500
Average Size of Farm.....	(Acres)	2	2,156	Wyoming	2,437	443
Organics						
Spring Wheat.....	(1,000 Bu)	1	1,314	Montana	1,314	2,720
Winter Wheat.....	(1,000 Bu)	2	690	Wyoming	1,017	7,350
Durum Wheat	(1,000 Bu)	1	223	Montana	223	481
Barley	(1,000 Bu)	8	52	Oregon	882	2,718
Lentils.....	(1,000 Cwt)	1	25	Montana	25	36
Dry Peas.....	(1,000 Cwt)	1	26	Montana	26	90
Dry Beans.....	(1,000 Cwt)	(NA)	(D)	Michigan	105	396

(D) Withheld to avoid disclosing data for individual operations.

(NA) Not Available.

¹ Inventory January 1, 2019 for cattle and sheep; December 1, 2018 for hogs and chickens.

² Cows and heifers that have calved.

³ Feedlots greater than 1,000 head.

⁴ Pig crop & egg production for the marketing year December 1, 2017-November 30, 2018.

Crop Summary – Montana: 2018

2018	Planted	Harvested	Yield	Production	Unit	Value/Unit	Total Value
	(Acres)	(Acres)	(Per Acre)			(Dollars)	(1,000 Dollars)
Winter Wheat.....	1,650,000	1,570,000	50.0	78,500,000	Bu	5.15	404,275
Spring Wheat.....	2,900,000	2,820,000	34.0	95,880,000	Bu	5.50	527,340
Durum Wheat.....	840,000	775,000	30.0	23,250,000	Bu	5.30	123,225
All Wheat.....	5,390,000	5,165,000	38.3	197,630,000	Bu	5.30	1,054,840
Barley.....	790,000	600,000	56.0	33,600,000	Bu	4.70	157,920
Oats.....	70,000	23,000	43.0	989,000	Bu	2.90	2,868
Corn, All Purposes.....	115,000						
Corn for Grain.....		68,000	85.0	5,780,000	Bu	3.50	20,230
Corn for Silage.....		37,000	20.0	740,000	Tons	(NA)	(NA)
Potatoes.....	11,100	11,100	345.0	3,830,000	Cwt	13.00	49,790
Sugar Beets.....	43,500	42,400	31.1	1,319,000	Tons	(NA)	(NA)
Pinto Beans.....	3,000	2,600	2,380.0	62,000	Cwt	(NA)	(NA)
Garbanzo Beans.....	390,000	382,000	1,350.0	5,138,000	Cwt	(NA)	(NA)
All Dry Beans.....	395,000	386,000	1,350.0	5,214,000	Cwt	24.60	128,264
All Dry Peas.....	335,000	310,000	1,620.0	5,022,000	Cwt	9.70	48,814
Lentils.....	500,000	450,000	1,080.0	4,860,000	Cwt	15.20	73,872
Austrian Winter Peas.....	12,000	8,000	950.0	76,000	Cwt	(D)	(D)
Flaxseed.....	39,000	37,000	17.0	629,000	Bu	9.00	5,661
Safflower.....	42,000	36,000	990.0	35,640,000	Lbs	22.00	7,841
Mustard Seed.....	(D)	(D)	(D)	(D)	Lbs	(D)	(D)
Canola.....	120,000	117,000	1,120.0	131,040,000	Lbs	14.80	19,394
Alfalfa Seed.....		7,700	398.0	3,063,000	Lbs	(NA)	(NA)
Alfalfa Hay.....		1,900,000	2.05	3,895,000	Tons	148.00	576,460
Other Hay.....		1,000,000	1.70	1,700,000	Tons	131.00	222,700
All Hay.....		2,900,000	1.93	5,595,000	Tons	145.00	799,160

(D) Withheld to avoid disclosing data for individual operations.
(NA) Not Available.

Crop Summary – Montana: 2017

2017	Planted	Harvested	Yield	Production	Unit	Value/Unit	Total Value
	(Acres)	(Acres)	(Per Acre)			(Dollars)	(1,000 Dollars)
Winter Wheat.....	1,750,000	1,590,000	42.0	66,780,000	Bu	4.76	317,873
Spring Wheat.....	2,500,000	2,290,000	21.0	48,090,000	Bu	6.21	298,639
Durum Wheat.....	890,000	785,000	16.0	12,560,000	Bu	6.32	79,379
All Wheat.....	5,140,000	4,665,000	27.3	127,430,000	Bu	5.34	695,891
Barley.....	770,000	565,000	51.0	28,815,000	Bu	4.34	125,057
Oats.....	70,000	18,000	47.0	846,000	Bu	2.86	2,420
Corn, All Purposes.....	115,000						
Corn for Grain.....		65,000	70.0	4,550,000	Bu	3.41	15,516
Corn for Silage.....		25,000	20.0	500,000	Tons	(NA)	(NA)
Potatoes.....	11,100	11,100	340.0	3,774,000	Cwt	12.80	48,307
Sugar Beets.....	42,900	42,700	32.7	1,396,000	Tons	41.30	57,655
Pinto Beans.....	6,000	6,000	2,500.0	150,000	Cwt	(NA)	(NA)
Garbanzo Beans.....	269,000	259,000	960.0	2,493,000	Cwt	(NA)	(NA)
All Dry Beans.....	275,000	265,000	1,000.0	2,643,000	Cwt	33.80	89,333
All Dry Peas.....	525,000	470,000	820.0	3,854,000	Cwt	11.00	42,394
Lentils.....	730,000	670,000	650.0	4,355,000	Cwt	25.30	110,182
Austrian Winter Peas.....	20,000	4,000	710.0	28,000	Cwt	(D)	(D)
Flaxseed.....	52,000	38,000	9.0	342,000	Bu	8.73	2,986
Safflower.....	39,000	28,000	610.0	17,080,000	Lbs	(D)	(D)
Mustard Seed.....	(D)	(D)	(D)	(D)	Lbs	(D)	(D)
Canola.....	155,000	137,000	860.0	117,820,000	Lbs	15.70	18,498
Alfalfa Seed.....		12,800	360.0	4,610,000	Lbs	(NA)	(NA)
Alfalfa Hay.....		1,650,000	2.10	3,465,000	Tons	142.00	492,030
Other Hay.....		850,000	1.50	1,275,000	Tons	136.00	173,400
All Hay.....		2,500,000	1.90	4,740,000	Tons	141.00	665,430

(D) Withheld to avoid disclosing data for individual operations.
(NA) Not Available.

Usual Planting & Harvesting Dates by Crop – Montana

Crop	Usual Planting Dates			Usual Harvesting Dates		
	Begin	Most Active	End	Begin	Most Active	End
Barley, Spring.....	Apr 3	Apr 13 - May 11	May 20	Jul 27	Aug 3 - Sep 2	Sep 10
Beans, Dry.....	May 5	May 10 - Jun 3	Jun 9	Aug 27	Sep 3 - Oct 2	Oct 11
Corn for Grain.....	Apr 26	May 4 - May 28	Jun 4	Oct 4	Oct 25 - Dec 3	Dec 8
Corn for Silage.....	Apr 26	May 4 - May 28	Jun 4	Aug 26	Sep 6 - Oct 1	Oct 10
Hay, Alfalfa.....	--	--	--	Jun 18	--	Sep 23
Hay, Other.....	--	--	--	Jun 20	--	Oct 7
Oats, Spring.....	Apr 18	Apr 26 - May 28	Jun 5	Aug 8	Aug 15 - Sep 9	Sep 22
Potatoes, Fall.....	May 7	May 17 - Jun 7	Jun 13	Sep 19	Sep 22 - Oct 23	Oct 31
Sugar Beets.....	Apr 14	Apr 20 - May 12	May 18	Sep 28	Oct 9 - Oct 27	Nov 4
Wheat, Durum.....	Apr 25	May 1 - Jun 1	Jun 15	Aug 11	Aug 19 - Sep 22	Oct 4
Wheat, Spring.....	Apr 6	Apr 14 - May 12	May 18	Jul 30	Aug 7 - Sep 6	Sep 13
Wheat, Winter.....	Sep 6	Sep 12 - Oct 7	Oct 16	Jul 22	Jul 26 - Aug 12	Aug 17

(--) There are no planting days or most active harvesting days associated with Hay or Alfalfa.

All Wheat: Area Planted & Harvested, Yield, Production, Price, & Value – Montana: 2009-2018

Year	Area Planted	Area Harvested	Yield per Acre	Production	Price per Bushel ¹	Value of Production
	(1,000 Acres)	(1,000 Acres)	(Bushels)	(1,000 Bushels)	(Dollars)	(1,000 Dollars)
2009.....	5,470	5,255	33.3	175,125	5.18	908,990
2010.....	5,370	5,140	41.7	214,180	6.29	1,361,460
2011.....	5,100	4,975	35.2	174,970	7.68	1,338,203
2012.....	5,800	5,615	34.8	195,590	8.15	1,600,489
2013.....	5,400	5,165	39.0	201,635	6.87	1,386,401
2014.....	5,985	5,650	37.1	209,470	6.23	1,298,295
2015.....	5,620	5,365	35.1	188,515	4.83	924,768
2016.....	5,130	4,975	42.4	210,875	4.43	947,754
2017.....	5,140	4,665	27.3	127,430	5.34	695,891
2018.....	5,390	5,165	38.3	197,630	5.30	1,054,840

¹ Marketing year average price.

Winter Wheat: Area Planted & Harvested, Yield, Production, Price, & Value – Montana: 2009-2018

Year	Area Planted	Area Harvested	Yield per Acre	Production	Price per Bushel ¹	Value of Production
	(1,000 Acres)	(1,000 Acres)	(Bushels)	(1,000 Bushels)	(Dollars)	(1,000 Dollars)
2009.....	2,550	2,420	37.0	89,540	4.79	428,897
2010.....	2,000	1,900	49.0	93,100	5.81	540,911
2011.....	2,250	2,190	41.0	89,790	6.74	605,185
2012.....	2,300	2,170	39.0	84,630	7.96	673,655
2013.....	2,000	1,900	43.0	81,700	7.05	575,985
2014.....	2,500	2,240	41.0	91,840	5.86	538,182
2015.....	2,350	2,220	41.0	91,020	4.59	417,782
2016.....	2,250	2,150	49.0	105,350	3.88	408,758
2017.....	1,750	1,590	42.0	66,780	4.76	317,873
2018.....	1,650	1,570	50.0	78,500	5.15	404,275

¹ Marketing year average price.

Durum Wheat: Area Planted & Harvested, Yield, Production, Price, & Value – Montana: 2009-2018

Year	Area Planted	Area Harvested	Yield per Acre	Production	Price per Bushel ¹	Value of Production
	(1,000 Acres)	(1,000 Acres)	(Bushels)	(1,000 Bushels)	(Dollars)	(1,000 Dollars)
2009.....	570	535	31.0	16,585	5.15	85,413
2010.....	520	510	34.0	17,340	6.22	107,855
2011.....	400	385	28.0	10,780	10.30	111,034
2012.....	550	545	28.0	15,260	8.12	123,911
2013.....	450	435	35.0	15,225	7.15	108,859
2014.....	435	430	31.0	13,330	9.45	125,969
2015.....	620	605	31.0	18,755	6.88	129,034
2016.....	780	765	41.0	31,365	5.93	185,994
2017.....	890	785	16.0	12,560	6.32	79,379
2018.....	840	775	30.0	23,250	5.30	123,225

¹ Marketing year average price.

Other Spring Wheat: Area Planted & Harvested, Yield, Production, Price, & Value – Montana: 2009-2018

Year	Planted	Harvested for Grain	Yield per Acre	Production	Price per Bushel ¹	Value of Production
	(1,000 Acres)	(1,000 Acres)	(Bushels)	(1,000 Bu)	(Dollars)	(1,000 Dollars)
2009.....	2,350	2,300	30.0	69,000	5.72	394,680
2010.....	2,850	2,730	38.0	103,740	6.87	712,694
2011.....	2,450	2,400	31.0	74,400	8.36	621,984
2012.....	2,950	2,900	33.0	95,700	8.39	802,923
2013.....	2,950	2,830	37.0	104,710	6.70	701,557
2014.....	3,050	2,980	35.0	104,300	6.08	634,144
2015.....	2,650	2,540	31.0	78,740	4.80	377,952
2016.....	2,100	2,060	36.0	74,160	4.76	353,002
2017.....	2,500	2,290	21.0	48,090	6.21	298,639
2018.....	2,900	2,820	34.0	95,880	5.50	527,340

¹ Marketing year average price.

Barley: Area Planted & Harvested, Yield, Production, Price, & Value – Montana: 2009-2018

Year	Area Planted	Area Harvested	Yield per Acre	Production	Price per Bushel ¹	Value of Production
	(1,000 Acres)	(1,000 Acres)	(Bushels)	(1,000 Bushels)	(Dollars)	(1,000 Dollars)
2009	870	720	56.0	40,320	4.86	195,955
2010	760	620	62.0	38,440	4.08	156,835
2011	700	620	48.0	29,760	5.27	156,835
2012	900	790	51.0	40,290	6.41	258,259
2013	990	830	52.0	43,160	6.32	272,771
2014	920	770	58.0	44,660	5.33	238,038
2015	990	860	52.0	44,720	5.82	260,270
2016	990	780	60.0	46,800	5.12	239,616
2017	770	565	51.0	28,815	4.34	125,057
2018	790	600	56.0	33,600	4.70	157,920

¹ Marketing year average price.

Oats: Area Planted & Harvested, Yield, Production, Price, & Value – Montana: 2009-2018

Year	Area Planted	Area Harvested	Yield per Acre	Production	Price per Bushel ¹	Value of Production
	(1,000 Acres)	(1,000 Acres)	(Bushels)	(1,000 Bushels)	(Dollars)	(1,000 Dollars)
2009	70.0	32.0	56.0	1,792	2.54	4,552
2010	65.0	22.0	61.0	1,342	2.66	3,570
2011	40.0	18.0	50.0	900	3.04	2,736
2012	45.0	18.0	45.0	810	3.74	3,029
2013	50.0	22.0	54.0	1,188	2.87	3,410
2014	45.0	16.0	69.0	1,104	3.30	3,643
2015	50.0	22.0	53.0	1,166	3.33	3,883
2016	60.0	28.0	47.0	1,316	3.20	4,211
2017	70.0	18.0	47.0	846	2.86	2,420
2018	70.0	23.0	43.0	989	2.90	2,868

¹ Marketing year average price.

Corn: Acreage, Production, & Value – Montana: 2009-2018

Year	Total		Harvested for Grain				Harvested for Silage			
	Planted	Harvested	Harvested	Yield	Production	Price/Bu ¹	Value	Harvested	Yield	Production
	(Acres)	(Acres)	(Acres)	(Bu/Acre)	(1,000 Bu)	(Dollars)	(\$1,000)	(Acres)	(Tons/Acre)	(1,000 Tons)
2009.....	72,000	71,000	26,000	152.0	3,952	4.23	16,717	45,000	23.0	1,035
2010.....	80,000	79,000	34,000	135.0	4,590	6.00	27,540	45,000	24.0	1,080
2011.....	77,000	74,000	36,000	127.0	4,572	6.47	29,581	38,000	21.0	798
2012.....	105,000	102,000	60,000	104.0	6,240	7.21	44,990	42,000	20.0	840
2013.....	120,000	116,000	75,000	115.0	8,625	4.27	36,829	41,000	23.0	943
2014.....	130,000	126,000	75,000	100.0	7,500	3.77	28,275	51,000	22.0	1,122
2015.....	105,000	100,000	50,000	110.0	5,500	4.01	22,055	50,000	23.0	1,150
2016.....	115,000	110,000	55,000	100.0	5,500	4.15	22,825	55,000	22.0	1,210
2017.....	115,000	90,000	65,000	70.0	4,550	3.41	15,516	25,000	20.0	500
2018.....	115,000	105,000	68,000	85.0	5,780	3.50	20,230	37,000	20.0	740

¹ Marketing year average price.

Potatoes: Area Planted & Harvested, Yield, Production, Price, & Value – Montana: 2009-2018

Year	Area Planted	Area Harvested	Yield per Acre	Production	Price per Cwt ¹	Value of Production
	(1,000 Acres)	(1,000 Acres)	(Cwt)	(1,000 Cwt)	(Dollars)	(1,000 Dollars)
2009.....	11.2	9.7	340	3,298	10.60	34,959
2010.....	11.5	11.3	325	3,673	11.50	42,240
2011.....	11.7	11.5	330	3,795	12.50	47,438
2012.....	12.0	11.7	320	3,744	12.00	44,928
2013.....	11.3	11.1	310	3,441	12.90	44,389
2014.....	11.5	11.3	320	3,616	12.80	46,285
2015.....	11.0	10.9	325	3,543	13.00	46,059
2016.....	11.1	11.0	335	3,685	12.70	46,800
2017.....	11.1	11.1	340	3,774	12.80	48,307
2018.....	11.1	11.1	345	3,830	13.00	49,790

¹ Marketing year average price.

Sugar Beets: Area Planted & Harvested, Yield, Production, Price, & Value – Montana: 2009-2018

Year	Area Planted	Area Harvested	Yield per Acre	Production	Price per Ton ¹	Value of Production
	(1,000 Acres)	(1,000 Acres)	(Tons)	(1,000 Tons)	(Dollars)	(1,000 Dollars)
2009.....	38.4	33.6	29.8	1,001	53.40	53,453
2010.....	42.6	42.5	29.5	1,254	64.00	80,256
2011.....	45.0	43.0	25.9	1,114	71.90	80,097
2012.....	46.6	45.8	28.2	1,292	63.80	82,430
2013.....	43.4	42.8	29.2	1,250	39.40	49,250
2014.....	45.1	44.4	32.3	1,434	49.70	71,270
2015.....	44.0	43.7	33.0	1,442	52.90	76,282
2016.....	45.6	45.3	35.0	1,586	36.60	58,048
2017.....	42.9	42.7	32.7	1,396	41.30	57,655
2018.....	43.5	42.4	31.1	1,319	(²)	(²)

¹ Marketing year average price.

² Published in February 2020.

Lentils: Area Planted & Harvested, Yield, Production, Price, & Value – Montana: 2009-2018

Year	Area Planted	Area Harvested	Yield per Acre	Production	Price per Cwt ¹	Value of Production
	(1,000 Acres)	(1,000 Acres)	(Pounds)	(1,000 Cwt)	(Dollars)	(1,000 Dollars)
2009	122	116	1,380	1,601	27.20	43,547
2010	260	247	1,360	3,359	23.90	80,280
2011	260	247	1,100	2,717	23.70	64,393
2012	205	195	1,100	2,145	19.50	41,828
2013	140	129	1,500	1,935	18.30	35,411
2014	130	119	1,480	1,761	22.80	40,151
2015	235	222	1,100	2,442	30.30	73,993
2016	520	505	1,460	7,373	28.50	210,131
2017	730	670	650	4,355	25.30	110,182
2018	500	450	1,080	4,860	15.20	73,872

¹ Marketing year average price.

Dry Edible Beans: Area Planted & Harvested, Yield, Production, Price, & Value – Montana: 2009-2018

Year	Area Planted	Area Harvested	Yield per Acre	Production	Price per Cwt ¹	Value of Production
	(1,000 Acres)	(1,000 Acres)	(Pounds)	(1,000 Cwt)	(Dollars)	(1,000 Dollars)
2009	11.9	11.5	2,100.0	242	28.60	6,921
2010	18.8	17.7	2,030.0	359	27.00	9,693
2011	15.0	14.8	1,820.0	270	34.70	9,369
2012	32.0	31.1	1,500.0	466	37.60	17,522
2013	24.0	23.6	1,920.0	453	30.10	13,635
2014	37.5	37.0	1,630.0	603	20.80	12,542
2015	49.0	46.5	1,340.0	624	28.90	18,034
2016	103.0	99.5	1,620.0	1,613	26.00	41,938
2017	275.0	265.0	1,000.0	2,643	33.80	89,333
2018	395.0	386.0	1,350.0	5,214	24.60	128,264

¹ Marketing year average price.

Pinto Beans: Acreage & Production – Montana: 2009-2018

Year	Planted	Harvested	Yield per Acre	Production
	(1,000 Acres)	(1,000 Acres)	(Pounds)	(1,000 Cwt)
2009	9.6	9.2	2,440	224
2010	12.5	11.8	2,330	275
2011	5.0	5.0	2,600	130
2012	9.0	8.5	2,500	213
2013	5.8	5.7	2,400	137
2014	6.0	5.8	2,200	128
2015	4.4	4.3	2,000	86
2016	4.0	3.5	2,300	81
2017	6.0	6.0	2,500	150
2018	3.0	2.6	2,380	62

Garbanzo Beans: Acreage & Production – Montana: 2009-2018

Year	Planted	Harvested	Yield per Acre	Production
	(1,000 Acres)	(1,000 Acres)	(Pounds)	(1,000 Cwt)
2009	2.3	2.3	780	18
2010	6.3	5.9	1,420	84
2011	9.0	8.9	1,340	119
2012	23.0	22.6	1,120	253
2013	18.0	17.7	1,760	312
2014	31.5	31.2	1,520	475
2015	43.0	40.6	1,270	517
2016	99.0	96.0	1,600	1,532
2017	269.0	259.0	960	2,493
2018	390.0	382.0	1,350	5,138

Dry Edible Peas: Area Planted & Harvested, Yield, Production, Price, & Value – Montana: 2009-2018

Year	Area Planted	Area Harvested	Yield per Acre	Production	Price per Cwt ¹	Value of Production
	(1,000 Acres)	(1,000 Acres)	(Pounds)	(1,000 Cwt)	(Dollars)	(1,000 Dollars)
2009.....	240	226	1,330	3,006	8.46	25,431
2010.....	220	207	2,000	4,140	9.13	37,798
2011.....	190	177	1,500	2,655	14.80	39,294
2012.....	315	293	1,500	4,395	14.60	64,167
2013.....	440	395	1,800	7,110	13.50	95,985
2014.....	525	504	1,800	9,072	11.00	99,792
2015.....	595	550	1,450	7,975	11.20	89,320
2016.....	610	580	1,950	11,310	10.50	118,755
2017.....	525	470	820	3,854	11.00	42,394
2018.....	335	310	1,620	5,022	9.70	48,814

¹ Marketing year average price.

Austrian Winter Peas: Area Planted & Harvested, Yield, Production, Price, & Value – Montana: 2009-2018

Year	Area Planted	Area Harvested	Yield per Acre	Production	Price per Cwt ¹	Value of Production
	(Acres)	(Acres)	(Pounds)	(1,000 Cwt)	(Dollars)	(1,000 Dollars)
2009.....	10,000	6,000	930	56	21.70	1,211
2010.....	16,000	7,000	1,570	110	15.50	1,705
2011.....	10,000	6,000	1,200	72	20.00	1,440
2012.....	11,000	6,900	1,000	69	21.90	1,511
2013.....	10,000	8,000	1,550	124	19.50	2,418
2014.....	12,000	7,000	1,100	77	19.20	1,478
2015.....	15,000	5,000	1,050	53	16.00	848
2016.....	15,000	7,000	1,300	91	(D)	(D)
2017.....	20,000	4,000	710	28	(D)	(D)
2018.....	12,000	8,000	950	76	(D)	(D)

(D) Withheld to avoid disclosing data for individual operations.

¹ Marketing year average price.

Canola: Area Planted & Harvested, Yield, Production, Price, & Value – Montana: 2009-2018

Year	Area Planted	Area Harvested	Yield per Acre	Production	Price per Cwt ¹	Value of Production
	(1,000 Acres)	(1,000 Acres)	(Pounds)	(1,000 Pounds)	(Dollars)	(1,000 Dollars)
2009.....	6,500	6,500	1,660	10,790	13.50	1,457
2010.....	17,500	17,100	1,730	29,583	20.00	5,917
2011.....	31,000	30,500	1,370	41,785	22.00	9,193
2012.....	51,000	49,500	1,200	59,400	26.20	15,563
2013.....	72,000	69,000	1,540	106,260	19.00	20,189
2014.....	63,000	61,000	1,380	84,180	16.10	13,553
2015.....	82,000	77,000	1,220	93,940	13.40	12,588
2016.....	62,000	60,000	1,670	100,200	14.60	14,629
2017.....	155,000	137,000	860	117,820	15.70	18,498
2018.....	120,000	117,000	1,120	131,040	14.80	19,394

¹ Marketing year average price.

Mustard Seed: Acreage & Production – Montana: 2009-2018

Year	Area Planted	Area Harvested	Yield/Acre	Production
	(1,000 Acres)	(1,000 Acres)	(Pounds)	(1,000 Pounds)
2009.....	18.0	17.7	920	16,284
2010.....	16.5	16.0	800	12,800
2011.....	11.0	10.3	490	5,047
2012.....	25.0	24.5	490	12,005
2013.....	22.0	21.0	650	13,650
2014.....	16.5	15.2	990	15,048
2015.....	23.0	21.0	620	13,020
2016.....	52.0	50.0	990	49,500
2017.....	75.0	70.0	500	35,000
2018.....	(1)	(1)	(1)	(1)

¹ Mustard seed estimates are no longer published at the state level starting in 2018.

Flaxseed: Area Planted & Harvested, Yield, Production, Price, & Value – Montana: 2009-2018

Year	Area Planted	Area Harvested	Yield per Acre	Production	Price per Bu ¹	Value of Production
	(1,000 Acres)	(1,000 Acres)	(Bushels)	(1,000 Bu)	(Dollars)	(1,000 Dollars)
2009.....	11	10	16.0	160	7.80	1,248
2010.....	15	15	17.0	255	11.20	2,856
2011.....	17	16	13.0	208	13.10	2,725
2012.....	18	13	12.0	156	13.60	2,122
2013.....	20	16	15.0	240	14.00	3,360
2014.....	28	25	17.0	425	11.80	5,015
2015.....	31	30	15.0	450	9.80	4,410
2016.....	29	28	22.0	616	8.04	4,953
2017.....	52	38	9.0	342	8.73	2,986
2018.....	39	37	17.0	629	9.00	5,661

¹ Marketing year average price.

Safflower: Area Planted & Harvested, Yield, Production, Price, & Value – Montana: 2009-2018

Year	Area Planted	Area Harvested	Yield per Acre	Production	Price per Cwt ¹	Value of Production
	(Acres)	(Acres)	(Pounds)	(1,000 Pounds)	(Dollars)	(1,000 Dollars)
2009.....	31,000	30,500	770	23,485	19.00	4,462
2010.....	28,000	27,000	850	22,950	19.00	4,361
2011.....	14,000	13,800	850	11,730	28.00	3,284
2012.....	27,000	25,800	730	18,834	34.00	6,404
2013.....	36,000	35,000	1,110	38,850	31.00	12,044
2014.....	54,000	50,500	840	42,420	27.00	11,453
2015.....	50,000	44,000	840	36,960	24.00	8,870
2016.....	37,000	34,000	810	27,540	(D)	(D)
2017.....	39,000	28,000	610	17,080	(D)	(D)
2018.....	42,000	36,000	990	35,640	22.00	7,841

(D) Withheld to avoid disclosing data for individual operations.

¹ Marketing year average price.

Alfalfa Seed: Acreage, Production, & Value – Montana: 2009-2018

Year	All					Irrigated		Non-Irrigated	
	Harvested	Yield per Acre	Production	Price per Pound	Value of Production	Harvested	Yield per Acre	Harvested	Yield per Acre
	(1,000 Acres)	(Pounds)	(1,000 Pounds)	(Dollars)	(Dollars)	(1,000 Acres)	(Pounds)	(1,000 Acres)	(Pounds)
2009.....	7.1	459	3,259	1.94	6,322,460	5,900.0	499	1,200.0	262
2010.....	7.0	465	3,258	1.66	5,408,280	6,600.0	486	400	125
2011.....	6.6	415	2,742	2.02	5,538,840	4,900.0	496	1,700	183
2012.....	7.0	403	2,820	2.11	5,950,200	4,300.0	600	2,700.0	89
2013.....	9.4	353	3,320	1.54	5,112,800	7,000.0	440	2,400.0	100
2014.....	10.0	340	3,395	2.36	8,012,200	7,000.0	440	3,000.0	105
2015.....	12.0	412	4,944	2.46	12,162,240	7,200.0	600	4,800.0	130
2016.....	12.6	473	5,957	2.33	13,879,810	9,200.0	605	3,400.0	115
2017.....	12.8	360	4,610	2.29	10,556,900	9,100.0	470	3,700.0	90
2018.....	7.7	398	3,063	2.16	6,616,080	6,000.0	485	1,700.0	90

All Hay: Area Harvested, Yield, Production, Price, & Value – Montana: 2009-2018

Year	Area Harvested	Yield per Acre	Production	Price per Ton ¹	Value of Production
	(1,000 Acres)	(Tons)	(1,000 Tons)	(Dollars)	(1,000 Dollars)
2009.....	2,500	1.91	4,770	95.50	457,920
2010.....	2,850	2.14	6,105	80.00	488,775
2011.....	2,700	2.07	5,590	98.00	543,060
2012.....	2,200	1.87	4,120	143.00	579,120
2013.....	2,800	1.95	5,460	138.00	741,360
2014.....	2,730	1.97	5,381	126.00	668,427
2015.....	2,500	1.87	4,680	124.00	574,760
2016.....	2,600	1.92	5,000	132.00	658,800
2017.....	2,500	1.90	4,740	141.00	665,430
2018.....	2,900	1.93	5,595	145.00	799,160

¹ Marketing year average price.

Alfalfa Hay: Area Harvested, Yield, Production, Price, & Value – Montana: 2009-2018

Year	Area Harvested	Yield per Acre	Production	Price per Ton ¹	Value of Production
	(1,000 Acres)	(Tons)	(1,000 Tons)	(Dollars)	(1,000 Dollars)
2009	1,700	2.10	3,570	96.00	342,720
2010	1,950	2.30	4,485	79.00	354,315
2011	2,000	2.20	4,400	98.00	431,200
2012	1,500	2.00	3,000	146.00	438,000
2013	1,800	2.20	3,960	141.00	558,360
2014	1,850	2.10	3,885	127.00	493,395
2015	1,700	2.00	3,400	125.00	425,000
2016	1,800	2.00	3,600	134.00	482,400
2017	1,650	2.10	3,465	142.00	492,030
2018	1,900	2.05	3,895	148.00	576,460

¹ Marketing year average price.

Other Hay: Area Harvested, Yield, Production, Price, & Value – Montana: 2009-2018

Year	Area Harvested	Yield per Acre	Production	Price per Ton ¹	Value of Production
	(1,000 Acres)	(Tons)	(1,000 Tons)	(Dollars)	(1,000 Dollars)
2009	800	1.50	1,200	96.00	115,200
2010	900	1.80	1,620	83.00	134,460
2011	700	1.70	1,190	94.00	111,860
2012	700	1.60	1,120	126.00	141,120
2013	1,000	1.50	1,500	122.00	183,000
2014	880	1.70	1,496	117.00	175,032
2015	800	1.60	1,280	117.00	149,760
2016	800	1.75	1,400	126.00	176,400
2017	850	1.50	1,275	136.00	173,400
2018	1,000	1.70	1,700	131.00	222,700

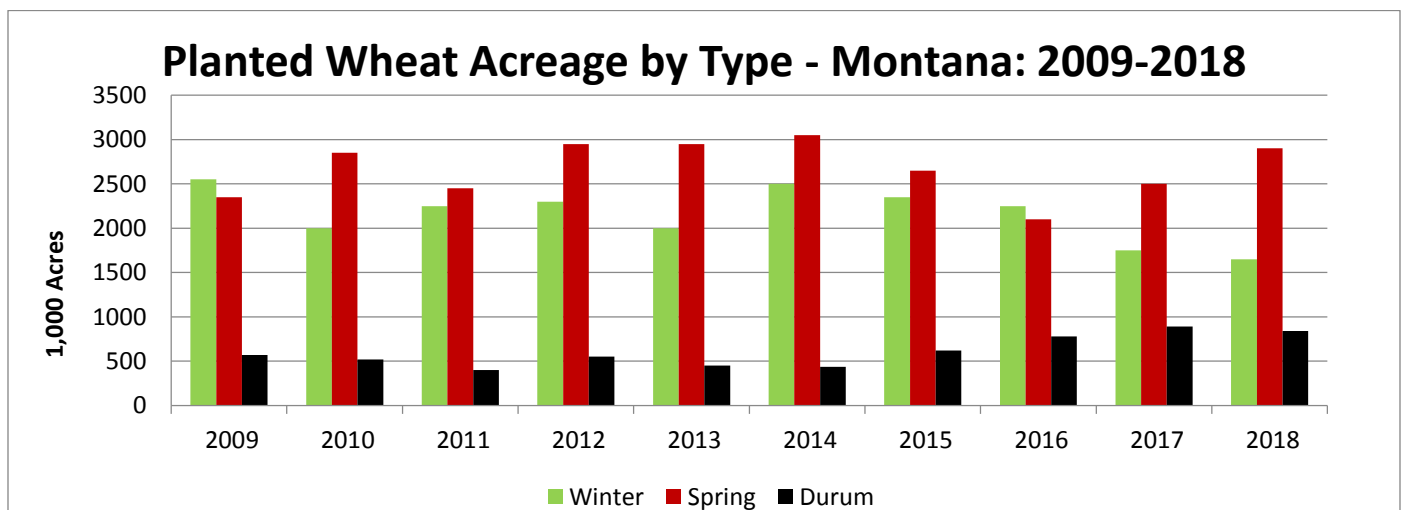
¹ Marketing year average price.

All Wheat, All Barley, & Oats, Quarterly Stocks – Montana: 2009-2018

year	March 1		June 1		September 1		December 1	
	On Farm Total	All Positions Total ¹	On Farm Total	All Positions Total ¹	On Farm Total	All Positions Total ¹	On Farm Total	All Positions Total ¹
All Barley	(1,000 Bushels)							
2009.....	8,500	19,910	5,000	13,770	35,000	43,600	26,000	36,890
2010.....	14,000	27,895	8,000	18,894	34,000	48,050	28,000	41,261
2011.....	17,000	29,768	6,500	16,810	28,000	39,082	20,000	31,970
2012.....	10,500	21,946	3,600	12,820	33,000	46,357	20,500	32,690
2013.....	9,500	21,945	3,650	12,488	33,000	45,035	24,000	38,183
2014.....	11,500	24,355	4,700	15,962	30,000	42,598	22,500	36,047
2015.....	14,500	26,961	5,500	15,782	32,500	45,527	20,000	33,376
2016.....	11,000	24,608	4,400	16,617	39,000	50,976	29,000	40,347
2017.....	17,000	29,013	7,100	18,504	26,000	38,890	18,000	29,195
2018.....	13,500	24,941	5,700	15,434	26,000	36,080	19,500	32,128
Oats	(1,000 Bushels)							
2009.....	1,000	1,055	700	730	1,900	1,960	1,400	1,475
2010.....	900	947	450	501	1,500	1,586	1,300	1,392
2011.....	1,200	1,266	650	702	1,200	1,265	1,000	1,040
2012.....	800	830	600	617	1,300	1,332	900	937
2013.....	600	652	400	428	1,350	1,421	1,100	1,172
2014.....	700	761	400	441	1,100	1,171	950	1,040
2015.....	760	834	500	536	1,100	1,124	850	879
2016.....	550	593	450	471	1,100	1,253	850	932
2017.....	660	768	380	404	800	(D)	700	791
2018.....	540	598	300	329	1,100	1,138	800	836
All Wheat	(1,000 Bushels)							
2009.....	54,000	73,510	26,000	40,350	159,500	186,160	119,000	148,700
2010.....	68,000	92,433	37,000	54,354	203,000	234,569	142,000	171,172
2011.....	81,000	106,270	36,000	49,819	157,000	186,726	105,000	130,935
2012.....	55,000	78,193	31,000	45,390	150,000	186,404	95,000	124,366
2013.....	48,000	75,646	24,000	36,558	144,000	173,173	115,000	145,615
2014.....	62,000	90,359	22,500	38,345	151,000	180,910	115,000	144,957
2015.....	67,000	95,113	37,000	55,185	154,000	187,929	119,000	151,022
2016.....	69,000	94,147	38,000	57,119	162,000	200,056	122,000	160,541
2017.....	72,000	107,623	38,000	61,035	94,000	131,792	76,000	109,445
2018.....	51,000	80,994	28,000	46,937	157,000	197,320	112,000	150,934

(D) Withheld to avoid disclosing data for individual operations.

¹ Includes on-farm stocks and stocks at mills, elevators, warehouses, terminals, and stocks owned by Commodity Credit Corporations.



Winter Wheat: Acreage, Yield, & Production by County & District – Montana: 2017

Counties & Districts ¹	Area Planted	Area Harvested	Yield	Production
	(Acres)	(Acres)	(Bushels/Acre)	(Bushels)
Flathead.....	5,200	5,100	65.3	333,000
Other.....	4,300	2,700	68.5	185,000
Northwest.....	9,500	7,800	66.4	518,000
Blaine.....	39,000	37,000	29.7	1,098,000
Chouteau.....	339,000	330,000	48.9	16,129,000
Glacier.....	74,000	64,000	48.8	3,120,000
Hill.....	225,000	218,000	35.6	7,760,000
Liberty.....	107,000	105,000	40.5	4,250,000
Phillips.....	21,000	13,500	26.6	359,000
Pondera.....	81,000	77,000	49.0	3,770,000
Teton.....	90,000	90,000	48.3	4,345,000
Toole.....	77,000	75,500	36.5	2,755,000
North Central.....	1,053,000	1,010,000	43.2	43,586,000
Garfield.....	31,000	19,000	26.7	508,000
McCone.....	10,000	8,100	14.9	121,000
Other.....	33,500	17,400	25.7	447,000
Northeast.....	74,500	44,500	24.2	1,076,000
Broadwater.....	11,000	11,000	47.5	522,000
Cascade.....	101,000	94,500	52.0	4,918,000
Fergus.....	105,000	90,500	36.3	3,288,000
Golden Valley.....	22,000	20,100	48.4	973,000
Judith Basin.....	50,000	47,200	37.0	1,745,000
Lewis & Clark.....	5,000	3,100	47.1	146,000
Meagher.....	4,500	4,300	37.9	163,000
Musselshell.....	15,000	12,400	28.5	354,000
Petroleum.....	11,500	9,900	20.5	203,000
Wheatland.....	22,000	21,500	30.8	662,000
Central.....	347,000	314,500	41.3	12,974,000
Gallatin.....	17,700	17,400	54.8	954,000
Other.....	5,800	5,600	35.7	200,000
Southwest.....	23,500	23,000	50.2	1,154,000
Big Horn.....	79,400	76,000	44.8	3,402,000
Park.....	3,100	2,700	39.6	107,000
Stillwater.....	24,000	20,500	36.4	747,000
Yellowstone.....	61,000	57,700	40.6	2,340,000
Other.....	8,000	5,100	41.0	209,000
South Central.....	175,500	162,000	42.0	6,805,000
Rosebud.....	13,000	8,500	27.6	235,000
Other.....	54,000	19,700	21.9	432,000
Southeast.....	67,000	28,200	23.7	667,000
Montana.....	1,750,000	1,590,000	42.0	66,780,000

¹ Counties with no acres planted or counties that are combined into "Other" counties/districts to avoid disclosure of individual information.

Winter Wheat: Acreage, Yield, & Production by County & District – Montana: 2018

Counties & Districts ¹	Area Planted	Area Harvested	Yield	Production
	(Acres)	(Acres)	(Bushels/Acre)	(Bushels)
Flathead.....	4,600	4,050	75.3	305,000
Other.....	3,400	2,950	69.5	205,000
Northwest.....	8,000	7,000	72.9	510,000
Chouteau.....	348,000	343,000	56.2	19,270,000
Glacier.....	42,000	38,400	50.8	1,950,000
Hill.....	195,000	193,900	42.8	8,290,000
Liberty.....	71,000	70,600	45.3	3,195,000
Pondera.....	85,000	84,400	47.1	3,975,000
Teton.....	96,000	95,100	54.7	5,200,000
Toole.....	40,500	40,100	34.5	1,385,000
Other.....	41,500	32,500	31.2	1,014,000
North Central.....	919,000	898,000	49.3	44,279,000
Garfield.....	28,000	24,000	38.1	915,000
McCone.....	6,300	5,800	44.0	255,000
Valley.....	5,800	4,600	35.4	163,000
Other.....	40,900	31,100	44.1	1,370,000
Northeast.....	81,000	65,500	41.3	2,703,000
Broadwater.....	10,000	9,900	49.3	488,000
Cascade.....	112,000	110,600	61.0	6,747,000
Fergus.....	113,000	111,100	51.8	5,750,000
Golden Valley.....	24,000	22,000	59.1	1,301,000
Judith Basin.....	51,000	50,800	55.2	2,802,000
Musselshell.....	15,100	13,500	38.3	517,000
Wheatland.....	21,800	21,800	48.7	1,062,000
Other.....	25,100	22,800	39.8	908,000
Central.....	372,000	362,500	54.0	19,575,000
Madison.....	1,400	1,400	70.0	98,000
Other.....	23,600	23,300	72.6	1,691,000
Southwest.....	25,000	24,700	72.4	1,789,000
Big Horn.....	83,000	78,400	53.5	4,195,000
Park.....	5,000	4,300	48.6	209,000
Stillwater.....	21,900	20,100	36.4	732,000
Treasure.....	4,700	3,350	46.0	154,000
Yellowstone.....	59,000	57,900	49.1	2,840,000
Other.....	4,400	3,950	36.5	144,000
South Central.....	178,000	168,000	49.3	8,274,000
Carter.....	21,000	12,700	31.7	402,000
Custer.....	8,600	7,500	29.1	218,000
Fallon.....	7,700	5,500	33.8	186,000
Powder River.....	5,700	2,000	26.5	53,000
Prairie.....	7,700	7,600	34.9	265,000
Rosebud.....	12,600	6,500	22.8	148,000
Wibaux.....	3,700	2,500	39.2	98,000
Southeast.....	67,000	44,300	30.9	1,370,000
Montana.....	1,650,000	1,570,000	50.0	78,500,000

¹ Counties with no acres planted or counties that are combined into "Other" counties/districts to avoid disclosure of individual information.

Spring Wheat: Acreage, Yield, & Production by County & District – Montana: 2017

Counties & Districts ¹	Area Planted	Area Harvested	Yield	Production
	(Acres)	(Acres)	(Bushels/Acre)	(Bushels)
Flathead.....	10,000	10,000	46.4	464,000
Lake.....	5,300	5,200	60.4	314,000
Ravalli.....	800	700	71.4	50,000
Other.....	1,900	1,800	48.3	87,000
Northwest.....	18,000	17,700	51.7	915,000
Blaine.....	155,000	145,000	18.5	2,677,000
Chouteau.....	168,000	157,000	25.9	4,063,000
Hill.....	239,000	236,000	29.7	7,000,000
Liberty.....	101,000	100,000	27.7	2,767,000
Phillips.....	94,500	75,600	16.9	1,280,000
Teton.....	53,000	52,800	35.7	1,885,000
Toole.....	134,000	133,600	21.4	2,865,000
Other.....	114,500	112,000	30.5	3,412,000
North Central.....	1,059,000	1,012,000	25.6	25,949,000
Daniels.....	117,000	107,000	13.5	1,443,000
Dawson.....	140,000	126,000	13.7	1,730,000
Garfield.....	58,000	44,300	12.9	572,000
McCone.....	182,000	159,500	11.9	1,892,000
Richland.....	145,000	135,500	18.1	2,455,000
Roosevelt.....	223,000	190,000	8.8	1,675,000
Sheridan.....	26,000	22,700	6.6	149,000
Valley.....	255,000	215,000	13.6	2,920,000
Northeast.....	1,146,000	1,000,000	12.8	12,836,000
Broadwater.....	11,700	11,700	50.7	593,000
Cascade.....	17,400	17,300	27.8	481,000
Fergus.....	42,900	42,100	22.3	940,000
Judith Basin.....	20,800	20,500	18.8	385,000
Meagher.....	1,800	1,800	26.7	48,000
Musselshell.....	4,500	4,400	21.4	94,000
Petroleum.....	5,000	4,200	9.5	40,000
Other.....	23,400	23,000	33.8	777,000
Central.....	127,500	125,000	26.9	3,358,000
Beaverhead.....	5,400	5,400	101.9	550,000
Gallatin.....	22,800	22,800	69.9	1,594,000
Other.....	6,800	6,700	68.1	456,000
Southwest.....	35,000	34,900	74.5	2,600,000
Big Horn.....	14,000	12,600	33.4	421,000
Treasure.....	3,000	2,800	57.1	160,000
Yellowstone.....	16,000	14,800	42.3	626,000
Other.....	7,000	5,800	27.4	159,000
South Central.....	40,000	36,000	37.9	1,366,000
Other.....	74,500	64,400	16.6	1,066,000
Southeast.....	74,500	64,400	16.6	1,066,000
Montana.....	2,500,000	2,290,000	21.0	48,090,000

¹ Counties with no acres planted or counties that are combined into "Other" counties/districts to avoid disclosure of individual information.

Spring Wheat: Acreage, Yield, & Production by County & District – Montana: 2018

Counties & Districts ¹	Area Planted	Area Harvested	Yield	Production
	(Acres)	(Acres)	(Bushels/Acre)	(Bushels)
Flathead.....	13,000	13,000	61.5	800,000
Lake.....	6,700	6,650	85.1	566,000
Other.....	2,300	2,250	67.6	152,000
Northwest.....	22,000	21,900	69.3	1,518,000
Blaine.....	172,000	169,800	28.7	4,875,000
Chouteau.....	164,000	163,900	40.9	6,700,000
Glacier.....	77,000	75,500	36.2	2,735,000
Hill.....	300,000	299,000	34.6	10,358,000
Liberty.....	152,000	152,000	33.7	5,125,000
Phillips.....	106,000	92,800	19.1	1,773,000
Pondera.....	80,000	79,600	46.9	3,733,000
Teton.....	43,000	42,600	53.2	2,268,000
Toole.....	172,000	171,800	27.6	4,745,000
North Central.....	1,266,000	1,247,000	33.9	42,312,000
Daniels.....	148,000	146,500	30.4	4,448,000
Garfield.....	50,000	49,400	30.2	1,490,000
McCone.....	197,000	196,600	29.0	5,692,000
Richland.....	158,000	157,800	37.7	5,943,000
Roosevelt.....	277,000	236,000	21.9	5,163,000
Valley.....	300,000	295,500	28.1	8,298,000
Other.....	196,000	194,200	36.8	7,146,000
Northeast.....	1,326,000	1,276,000	29.9	38,180,000
Broadwater.....	12,200	12,200	73.3	894,000
Cascade.....	19,700	19,100	39.5	754,000
Fergus.....	41,100	41,000	42.4	1,740,000
Judith Basin.....	19,300	19,300	56.1	1,083,000
Lewis & Clark.....	3,200	3,200	60.3	193,000
Musselshell.....	4,400	4,400	43.9	193,000
Petroleum.....	2,500	2,500	30.8	77,000
Wheatland.....	10,000	9,800	42.7	418,000
Other.....	6,600	6,500	37.1	241,000
Central.....	119,000	118,000	47.4	5,593,000
Beaverhead.....	5,500	5,400	117.6	635,000
Other.....	32,500	32,300	74.8	2,415,000
Southwest.....	38,000	37,700	80.9	3,050,000
Big Horn.....	12,600	11,800	60.3	711,000
Carbon.....	1,600	1,600	46.3	74,000
Treasure.....	4,000	3,500	86.6	303,000
Yellowstone.....	13,300	13,000	54.0	702,000
Other.....	4,500	4,500	51.1	230,000
South Central.....	36,000	34,400	58.7	2,020,000
Wibaux.....	22,800	22,400	32.4	725,000
Other.....	70,200	62,600	39.6	2,482,000
Southeast.....	93,000	85,000	37.7	3,207,000
Montana.....	2,900,000	2,820,000	34.0	95,880,000

¹ Counties with no acres planted or counties that are combined into "Other" counties/districts to avoid disclosure of individual information.

Durum Wheat: Acreage, Yield, & Production by County & District – Montana: 2017

Counties & Districts ¹	Area Planted	Area Harvested	Yield	Production
	(Acres)	(Acres)	(Bushels/Acre)	(Bushels)
Blaine	18,000	17,000	14.5	247,000
Chouteau	16,800	15,500	24.0	372,000
Glacier	19,000	19,000	22.4	426,000
Hill	27,000	26,200	28.7	751,000
Pondera	32,000	32,000	36.8	1,177,000
Teton	9,700	9,700	36.3	352,000
Toole	25,000	25,000	24.9	623,000
Other	50,000	41,600	22.3	926,000
North Central	197,500	186,000	26.2	4,874,000
Daniels	150,000	142,000	13.7	1,945,000
Richland	21,000	17,600	14.9	263,000
Roosevelt	113,000	97,500	12.9	1,255,000
Sheridan	295,000	242,000	10.9	2,630,000
Valley	55,500	48,000	14.3	684,000
Other	21,500	19,900	12.6	251,000
Northeast	656,000	567,000	12.4	7,028,000
Other Districts	36,500	32,000	20.6	658,000
Montana	890,000	785,000	16.0	12,560,000

¹ Counties with no acres planted or counties that are combined into "Other" counties/districts to avoid disclosure of individual information.

Durum Wheat: Acreage, Yield, & Production by County & District – Montana: 2018

Counties & Districts ¹	Area Planted	Area Harvested	Yield	Production
	(Acres)	(Acres)	(Bushels/Acre)	(Bushels)
Chouteau	12,000	11,500	45.6	524,000
Hill	18,500	17,800	42.8	762,000
Liberty	22,600	21,700	29.4	639,000
Phillips	10,000	9,500	18.8	179,000
Pondera	21,300	20,500	54.2	1,111,000
Teton	11,000	10,600	56.7	601,000
Toole	23,300	22,300	32.1	716,000
Other	26,300	25,100	23.0	577,000
North Central	145,000	139,000	36.8	5,109,000
Daniels	148,000	139,000	33.4	4,638,000
Richland	14,000	13,500	26.9	363,000
Sheridan	335,000	314,000	27.3	8,571,000
Other	169,000	146,500	25.7	3,771,000
Northeast	666,000	613,000	28.3	17,343,000
Other	6,700	6,600	45.8	302,000
Central	6,700	6,600	45.8	302,000
Wibaux	16,300	10,500	27.9	293,000
Other	4,200	4,200	31.9	134,000
Southeast	20,500	14,700	29.0	427,000
Other Districts	1,800	1,700	40.6	69,000
Montana	840,000	775,000	30.0	23,250,000

¹ Counties with no acres planted or counties that are combined into "Other" counties/districts to avoid disclosure of individual information.

Barley: Acreage, Yield, & Production by County & District – Montana: 2017

Counties & Districts ¹	Area Planted (Acres)	Area Harvested (Acres)	Yield (Bushels/Acre)	Production (Bushels)
Other.....	7,900	4,200	63.1	265,000
Northwest	7,900	4,200	63.1	265,000
Blaine.....	14,500	10,800	17.1	185,000
Chouteau	62,000	56,000	44.3	2,478,000
Glacier	60,000	55,000	40.3	2,217,000
Hill.....	24,000	22,500	22.1	498,000
Liberty	17,500	16,900	24.1	407,000
Phillips	21,500	3,000	13.3	40,000
Pondera	52,000	50,300	51.2	2,574,000
Teton.....	67,500	62,000	63.5	3,939,000
Toole.....	67,500	62,500	37.4	2,338,000
North Central.....	386,500	339,000	43.3	14,676,000
Dawson.....	14,100	1,500	21.4	32,100
McCone	18,500	3,700	21.1	78,000
Richland.....	13,700	1,100	28.2	31,000
Other.....	45,900	6,400	27.5	175,900
Northeast	92,200	12,700	25.0	317,000
Broadwater	5,700	4,700	100.6	473,000
Cascade.....	41,900	40,000	54.4	2,175,000
Fergus.....	35,300	24,300	31.5	765,000
Judith Basin	15,400	13,700	35.6	488,000
Lewis & Clark.....	8,500	6,900	73.5	507,000
Meagher.....	9,300	7,900	54.6	431,000
Wheatland.....	11,200	6,600	38.3	253,000
Other.....	14,700	7,900	32.0	253,000
Central	142,000	112,000	47.7	5,345,000
Gallatin.....	31,200	28,300	80.5	2,278,000
Madison	4,700	2,700	114.8	310,000
Other.....	5,300	2,200	94.1	207,000
Southwest.....	41,200	33,200	84.2	2,795,000
Big Horn.....	14,200	12,800	77.3	989,000
Carbon	9,000	8,400	126.5	1,063,000
Park	5,600	4,700	61.3	288,000
Treasure	4,400	4,300	130.2	560,000
Yellowstone	23,700	21,300	76.1	1,620,000
Other.....	5,400	4,400	40.9	180,000
South Central	62,300	55,900	84.1	4,700,000
Powder River	4,500	800	23.3	18,600
Rosebud	11,300	6,000	113.3	680,000
Other.....	22,100	1,200	15.3	18,400
Southeast	37,900	8,000	89.6	717,000
Montana	770,000	565,000	51.0	28,815,000

¹ Counties with no acres planted or counties that are combined into "Other" counties/districts to avoid disclosure of individual information.

Barley: Acreage, Yield, & Production by County & District – Montana: 2018

Counties & Districts ¹	Area Planted (Acres)	Area Harvested (Acres)	Yield (Bushels/Acre)	Production (Bushels)
Flathead	2,500	2,200	56.4	124,000
Ravalli	900	400	43.8	17,500
Other	4,000	1,000	73.5	73,500
Northwest	7,400	3,600	59.7	215,000
Blaine	17,000	8,900	28.4	253,000
Chouteau	68,200	62,900	54.8	3,445,000
Glacier	68,700	66,300	38.9	2,580,000
Hill	18,600	16,800	38.0	639,000
Liberty	20,300	20,100	40.5	815,000
Phillips	32,300	5,700	30.9	176,000
Pondera	60,200	59,400	61.3	3,640,000
Teton	67,500	66,600	66.4	4,425,000
Toole	72,200	70,800	41.7	2,955,000
North Central	425,000	377,500	50.1	18,928,000
Dawson	16,700	2,600	41.2	107,000
Garfield	15,000	2,900	32.4	94,000
McCone	22,900	6,900	49.4	341,000
Other	51,400	12,800	51.4	658,000
Northeast	106,000	25,200	47.6	1,200,000
Broadwater	5,400	4,300	87.7	377,000
Cascade	39,700	37,500	61.5	2,305,000
Fergus	39,800	35,500	59.7	2,120,000
Judith Basin	15,700	13,900	57.4	798,000
Lewis & Clark	6,100	5,700	97.0	553,000
Meagher	6,900	6,500	71.1	462,000
Other	22,900	16,600	53.6	890,000
Central	136,500	120,000	62.5	7,505,000
Beaverhead	5,000	3,500	113.1	396,000
Other	31,600	25,200	85.5	2,154,000
Southwest	36,600	28,700	88.9	2,550,000
Big Horn	10,800	7,700	75.5	581,000
Carbon	6,500	6,100	64.4	393,000
Park	5,000	4,400	76.1	335,000
Treasure	4,400	3,600	100.0	360,000
Yellowstone	15,700	15,000	76.5	1,147,000
Other	4,300	2,500	55.2	138,000
South Central	46,700	39,300	75.2	2,954,000
Powder River	4,200	2,200	46.4	102,000
Other	27,600	3,500	41.7	146,000
Southeast	31,800	5,700	43.5	248,000
Montana	790,000	600,000	56.0	33,600,000

¹ Counties with no acres planted or counties that are combined into "Other" counties/districts to avoid disclosure of individual information.

Oats: Acreage, Yield, & Production by County & District – Montana: 2017

Counties & Districts ¹	Area Planted	Area Harvested	Yield	Production
	(Acres)	(Acres)	(Bushels/Acre)	(Bushels)
Lake	700	150	90.0	13,500
Other	2,100	450	67.8	30,500
Northwest	2,800	600	73.3	44,000
Hill	2,100	950	24.7	23,500
Other	16,100	6,450	37.9	244,500
North Central	18,200	7,400	36.2	268,000
Other	1,700	900	77.8	70,000
Southwest	1,700	900	77.8	70,000
Other	2,700	1,200	45.8	55,000
South Central	2,700	1,200	45.8	55,000
Other Districts	44,600	7,900	51.8	409,000
Montana	70,000	18,000	47.0	846,000

¹ Counties with no acres planted or counties that are combined into "Other" counties/districts to avoid disclosure of individual information.

Oats: Acreage, Yield, & Production by County & District – Montana: 2018

Counties & Districts ¹	Area Planted	Area Harvested	Yield	Production
	(Acres)	(Acres)	(Bushels/Acre)	(Bushels)
Other	1,500	800	63.8	51,000
Northwest	1,500	800	63.8	51,000
Phillips	3,900	1,300	27.4	35,600
Other	12,600	4,200	40.6	170,400
North Central	16,500	5,500	37.5	206,000
Dawson	4,800	2,000	41.3	82,500
Garfield	2,800	850	49.4	42,000
McCone	5,500	1,000	35.7	35,700
Richland	7,700	2,300	54.3	125,000
Valley	5,700	2,600	9.9	25,800
Other	9,100	2,250	51.1	115,000
Northeast	35,600	11,000	38.7	426,000
Cascade	500	250	38.4	9,600
Other	5,100	2,450	52.0	127,400
Central	5,600	2,700	50.7	137,000
Other	1,500	500	108.0	54,000
Southwest	1,500	500	108.0	54,000
Big Horn	500	400	68.5	27,400
Other	1,500	700	76.6	53,600
South Central	2,000	1,100	73.6	81,000
Other	7,300	1,400	24.3	34,000
Southeast	7,300	1,400	24.3	34,000
Montana	70,000	23,000	43.0	989,000

¹ Counties with no acres planted or counties that are combined into "Other" counties/districts to avoid disclosure of individual information.

Dry Peas: Acreage, Yield, & Production by County & District – Montana: 2017-2018

Counties & Districts ¹	2017				2018			
	Area Planted	Area Harvested	Yield per Acre	Production	Area Planted	Area Harvested	Yield per Acre	Production
	(Acres)	(Acres)	(Pounds)	(Cwt)	(Acres)	(Acres)	(Pounds)	(Cwt)
Other	(NA)	(NA)	(NA)	(NA)	2,700	2,700	3,070.0	83,000
Northwest.....	(NA)	(NA)	(NA)	(NA)	2,700	2,700	3,070.0	83,000
Chouteau.....	21,900	21,000	1,420.0	299,000	18,500	17,600	1,950.0	344,000
Glacier	19,200	18,500	1,300.0	240,000	12,600	12,600	1,410.0	178,000
Hill	31,200	30,000	890.0	268,000	24,400	21,100	1,270.0	268,000
Liberty.....	17,900	17,500	740.0	129,000	(NA)	(NA)	(NA)	(NA)
Phillips.....	(NA)	(NA)	(NA)	(NA)	10,200	9,000	1,160.0	104,000
Pondera.....	5,300	5,300	1,810.0	96,000	(NA)	(NA)	(NA)	(NA)
Teton	(NA)	(NA)	(NA)	(NA)	2,400	2,000	2,150.0	43,000
Toole	22,900	22,500	1,090.0	245,000	17,100	17,100	1,230.0	210,000
Other	43,100	39,400	730.0	287,000	15,800	13,900	1,430.0	199,000
North Central	161,500	154,200	1,010.0	1,564,000	101,000	93,300	1,440.0	1,346,000
McCone	41,700	34,800	720.0	251,000	(NA)	(NA)	(NA)	(NA)
Roosevelt	58,000	44,300	550.0	245,000	33,900	28,700	1,160.0	334,000
Sheridan	50,900	45,200	640.0	288,000	49,100	45,100	1,680.0	756,000
Valley.....	60,700	53,900	440.0	238,000	39,000	35,500	1,620.0	575,000
Other	83,200	73,800	700.0	515,000	68,000	65,100	1,820.0	1,184,000
Northeast.....	294,500	252,000	610.0	1,537,000	190,000	174,400	1,630.0	2,849,000
Cascade	2,800	2,800	1,830.0	51,300	2,900	2,900	1,480.0	43,000
Judith Basin.....	4,600	4,600	1,070.0	49,200	2,900	2,900	1,660.0	48,000
Other	15,400	15,100	960.0	144,500	7,200	7,200	2,290.0	165,000
Central	22,800	22,500	1,090.0	245,000	13,000	13,000	1,970.0	256,000
Yellowstone	7,200	7,200	1,380.0	99,300	(NA)	(NA)	(NA)	(NA)
Other	3,700	3,400	1,840.0	62,700	(NA)	(NA)	(NA)	(NA)
South Central....	10,900	10,600	1,530.0	162,000	(NA)	(NA)	(NA)	(NA)
Fallon.....	(NA)	(NA)	(NA)	(NA)	2,800	2,400	1,900.0	45,500
Rosebud.....	(NA)	(NA)	(NA)	(NA)	2,900	2,200	1,860.0	41,000
Other	(NA)	(NA)	(NA)	(NA)	13,400	13,300	1,610.0	213,500
Southeast	(NA)	(NA)	(NA)	(NA)	19,100	17,900	1,680.0	300,000
Other Districts ...	35,300	30,700	1,130.0	346,000	9,200	8,700	2,160.0	188,000
Montana.....	525,000	470,000	820.0	3,854,000	335,000	310,000	1,620.0	5,022,000

(NA) Not Available.

¹ Counties with no acres planted or counties that are combined into "Other" counties/districts to avoid disclosure of individual information.

All Dry Beans: Acreage, Yield, & Production by County & District – Montana: 2017-2018

Counties & Districts ¹	2017				2018			
	Area Planted	Area Harvested	Yield per Acre	Production	Area Planted	Area Harvested	Yield per Acre	Production
	(Acres)	(Acres)	(Pounds)	(Cwt)	(Acres)	(Acres)	(Pounds)	(Cwt)
Chouteau	36,900	36,700	1,130.0	415,000	58,400	57,500	1,630.0	935,000
Glacier	24,300	24,300	1,160.0	281,000	33,000	31,400	1,140.0	357,000
Hill	14,800	14,700	1,410.0	208,000	26,000	25,800	1,130.0	292,000
Liberty	26,200	26,200	930.0	243,000	33,200	33,100	1,060.0	351,000
Pondera	20,100	19,600	1,330.0	261,000	24,800	24,800	1,360.0	338,000
Teton	33,200	33,200	920.0	304,000	30,800	30,700	1,470.0	451,000
Toole	13,400	13,200	1,260.0	166,000	26,500	26,500	1,060.0	281,000
Other	5,600	5,300	680.0	36,000	6,800	6,700	670.0	45,000
North Central.....	174,500	173,200	1,110.0	1,914,000	239,500	236,500	1,290.0	3,050,000
Dawson	7,400	7,300	1,150.0	83,900	(NA)	(NA)	(NA)	(NA)
McCone	21,800	20,100	480.0	96,200	26,300	25,700	1,410.0	362,000
Roosevelt	8,800	7,700	550.0	42,300	19,500	17,600	1,070.0	188,000
Sheridan	(NA)	(NA)	(NA)	(NA)	30,500	28,800	1,590.0	457,000
Valley	(NA)	(NA)	(NA)	(NA)	13,900	13,300	1,270.0	169,000
Other	26,600	22,200	870.0	193,600	21,800	21,500	1,610.0	346,000
Northeast.....	64,600	57,300	730.0	416,000	112,000	106,900	1,420.0	1,522,000
Cascade	9,500	8,700	910.0	79,600	17,200	16,900	1,550.0	262,000
Judith Basin	(NA)	(NA)	(NA)	(NA)	3,200	3,200	1,380.0	44,000
Other	11,900	11,700	770.0	90,400	12,600	12,500	1,450.0	181,000
Central	21,400	20,400	830.0	170,000	33,000	32,600	1,490.0	487,000
Other	1,300	1,200	1,300.0	15,600	(NA)	(NA)	(NA)	(NA)
Southwest	1,300	1,200	1,300.0	15,600	(NA)	(NA)	(NA)	(NA)
Stillwater	1,300	1,300	1,520.0	19,800	(NA)	(NA)	(NA)	(NA)
Other	2,300	2,200	1,480.0	32,500	3,600	3,300	1,720.0	56,800
South Central	3,600	3,500	1,490.0	52,300	3,600	3,300	1,720.0	56,800
Other	(NA)	(NA)	(NA)	(NA)	5,400	5,400	1,170.0	63,100
Southeast	(NA)	(NA)	(NA)	(NA)	5,400	5,400	1,170.0	63,100
Other Districts.....	9,600	9,400	800.0	75,100	1,500	1,300	2,700.0	35,100
Montana	275,000	265,000	1,000.0	2,643,000	395,000	386,000	1,350.0	5,214,000

(NA) Not Available.

¹ Counties with no acres planted or counties that are combined into "Other" counties/districts to avoid disclosure of individual information.

Garbanzo Beans: Acreage, Yield, & Production by County & District – Montana: 2017-2018

Counties & Districts ¹	2017				2018			
	Area Planted	Area Harvested	Yield per Acre	Production	Area Planted	Area Harvested	Yield per Acre	Production
	(Acres)	(Acres)	(Pounds)	(Cwt)	(Acres)	(Acres)	(Pounds)	(Cwt)
Glacier	(NA)	(NA)	(NA)	(NA)	33,000	31,400	1,140.0	357,000
Hill	(NA)	(NA)	(NA)	(NA)	26,000	25,800	1,130.0	292,000
Pondera	(NA)	(NA)	(NA)	(NA)	24,800	24,800	1,360.0	338,000
Teton	(NA)	(NA)	(NA)	(NA)	29,800	29,700	1,510.0	449,000
Toole	(NA)	(NA)	(NA)	(NA)	26,500	26,500	1,060.0	281,000
Other	(NA)	(NA)	(NA)	(NA)	97,900	97,300	1,370.0	1,331,000
North Central.....	(NA)	(NA)	(NA)	(NA)	238,000	235,500	1,290.0	3,048,000
McCone	(NA)	(NA)	(NA)	(NA)	26,300	25,700	1,410.0	362,000
Valley	(NA)	(NA)	(NA)	(NA)	13,900	13,300	1,270.0	169,000
Other	(NA)	(NA)	(NA)	(NA)	69,800	66,100	1,430.0	947,000
Northeast.....	(NA)	(NA)	(NA)	(NA)	110,000	105,100	1,410.0	1,478,000
Cascade	9,500	8,700	910.0	79,600	17,200	16,900	1,550.0	262,000
Judith Basin	(NA)	(NA)	(NA)	(NA)	3,200	3,200	1,380.0	44,000
Other	11,900	11,700	770.0	90,400	12,600	12,500	1,450.0	181,000
Central	21,400	20,400	830.0	170,000	33,000	32,600	1,490.0	487,000
Other	1,300	1,200	1,300.0	15,600	(NA)	(NA)	(NA)	(NA)
Southwest	1,300	1,200	1,300.0	15,600	(NA)	(NA)	(NA)	(NA)
Other Districts.....	246,300	237,400	970.0	2,307,400	9,000	8,800	1,420.0	125,000
Montana	269,000	259,000	960.0	2,493,000	390,000	382,000	1,350.0	5,138,000

(NA) Not Available.

¹ Counties with no acres planted or counties that are combined into "Other" counties/districts to avoid disclosure of individual information.

Lentils: Acreage, Yield, & Production by County & District – Montana: 2017-2018

Counties & Districts ¹	2017				2018			
	Area Planted	Area Harvested	Yield per Acre	Production	Area Planted	Area Harvested	Yield per Acre	Production
	(Acres)	(Acres)	(Pounds)	(Cwt)	(Acres)	(Acres)	(Pounds)	(Cwt)
Other	700	700	1,170.0	8,200	(NA)	(NA)	(NA)	(NA)
Northwest.....	700	700	1,170.0	8,200	(NA)	(NA)	(NA)	(NA)
Blaine	(NA)	(NA)	(NA)	(NA)	13,800	12,700	440.0	56,500
Chouteau	26,300	25,500	920.0	235,000	17,800	17,800	1,190.0	212,000
Glacier	21,800	21,600	980.0	212,000	13,800	13,800	1,000.0	138,000
Hill	56,600	54,100	900.0	488,000	46,500	45,600	740.0	339,000
Liberty	38,600	38,600	800.0	309,000	28,800	28,700	1,050.0	302,000
Phillips	29,200	28,300	630.0	179,000	21,600	16,000	580.0	93,000
Pondera.....	19,100	18,700	930.0	174,000	9,700	9,400	1,310.0	123,000
Teton	(NA)	(NA)	(NA)	(NA)	3,200	3,200	1,140.0	36,500
Toole	23,000	23,000	1,020.0	235,000	19,800	19,400	1,020.0	197,000
Other	39,400	37,700	580.0	217,000	(NA)	(NA)	(NA)	(NA)
North Central	254,000	247,500	830.0	2,049,000	175,000	166,600	900.0	1,497,000
Daniels	77,000	74,600	480.0	357,000	62,000	58,400	1,280.0	745,000
McCone.....	31,600	28,700	440.0	127,000	26,700	22,600	1,340.0	303,000
Roosevelt	66,100	50,400	540.0	274,000	41,400	28,100	1,150.0	324,000
Sheridan	134,500	127,400	510.0	650,000	84,400	68,300	1,120.0	764,000
Valley	63,900	48,400	490.0	237,000				
Other	40,400	33,000	530.0	176,000	72,500	69,600	1,110.0	774,000
Northeast.....	413,500	362,500	500.0	1,821,000	287,000	247,000	1,180.0	2,910,000
Cascade	(NA)	(NA)	(NA)	(NA)	7,900	7,100	980.0	69,700
Fergus	(NA)	(NA)	(NA)	(NA)	3,700	3,700	1,750.0	64,800
Judith Basin.....	(NA)	(NA)	(NA)	(NA)	1,700	1,700	1,620.0	27,500
Other	(NA)	(NA)	(NA)	(NA)	10,300	10,000	1,300.0	130,000
Central.....	(NA)	(NA)	(NA)	(NA)	23,600	22,500	1,300.0	292,000
Other	2,000	2,000	1,420.0	28,400	(NA)	(NA)	(NA)	(NA)
Southwest	2,000	2,000	1,420.0	28,400	(NA)	(NA)	(NA)	(NA)
Other	(NA)	(NA)	(NA)	(NA)	2,200	2,200	1,270.0	27,900
South Central.....	(NA)	(NA)	(NA)	(NA)	2,200	2,200	1,270.0	27,900
Carter	(NA)	(NA)	(NA)	(NA)	1,200	1,150	390.0	4,500
Fallon	(NA)	(NA)	(NA)	(NA)	1,800	1,800	1,040.0	18,700
Other	(NA)	(NA)	(NA)	(NA)	7,800	7,350	1,220.0	89,800
Southeast.....	(NA)	(NA)	(NA)	(NA)	10,800	10,300	1,100.0	113,000
Other Districts	59,800	57,300	780.0	448,400	1,400	1,400	1,440.0	20,100
Montana.....	730,000	670,000	650.0	4,355,000	500,000	450,000	1,080.0	4,860,000

(NA) Not Available.

¹ Counties with no acres planted or counties that are combined into "Other" counties/districts to avoid disclosure of individual information.

Sugar Beets: Acreage, Yield, & Production by County & District – Montana: 2017-2018

Counties & Districts ¹	2017				2018			
	Area Planted	Area Harvested	Yield per Acre	Production	Area Planted	Area Harvested	Yield per Acre	Production
	(Acres)	(Acres)	(Tons)	(Tons)	(Acres)	(Acres)	(Tons)	(Tons)
Dawson.....	2,200	2,200	28.2	62,000	2,300	2,100	32.4	68,000
Richland.....	13,700	13,700	32.8	449,000	13,700	13,500	31.1	420,000
Roosevelt.....	2,200	2,200	28.6	63,000	3,000	3,000	33.0	99,000
Northeast.....	18,100	18,100	31.7	574,000	19,000	18,600	31.6	587,000
Big Horn.....	8,100	8,000	33.8	270,000	7,900	7,700	29.7	229,000
Carbon.....	2,800	2,800	33.6	94,000	2,900	2,800	29.3	82,000
Treasure.....	3,200	3,200	36.3	116,000	2,900	2,800	34.3	96,000
Yellowstone.....	6,300	6,300	33.0	208,000	6,300	6,200	31.6	196,000
South Central.....	20,400	20,300	33.9	688,000	20,000	19,500	30.9	603,000
Custer.....	200	200	35.5	7,100	(NA)	(NA)	(NA)	(NA)
Prairie.....	2,200	2,100	27.9	58,500	(NA)	(NA)	(NA)	(NA)
Rosebud.....	2,000	2,000	34.2	68,400	2,200	2,000	29.4	58,800
Other.....	(NA)	(NA)	(NA)	(NA)	2,300	2,300	30.5	70,200
Southeast.....	4,400	4,300	31.2	134,000	4,500	4,300	30.0	129,000
Montana.....	42,900	42,700	32.7	1,396,000	43,500	42,400	31.1	1,319,000

(NA) Not Available.

¹ Counties with no acres planted or counties that are combined into "Other" counties/districts to avoid disclosure of individual information.

Canola: Acreage, Yield, & Production by County & District – Montana: 2017-2018

Counties & Districts ¹	2017				2018			
	Area Planted	Area Harvested	Yield per Acre	Production	Area Planted	Area Harvested	Yield per Acre	Production
	(Acres)	(Acres)	(Pounds)	(Pounds)	(Acres)	(Acres)	(Pounds)	(Pounds)
Chouteau.....	6,500	5,600	900.0	5,020,000	4,000	4,000	1,280.0	5,129,000
Glacier.....	4,900	4,900	1,410.0	6,900,000	9,500	9,250	540.0	5,020,000
Liberty.....	5,100	4,800	580.0	2,775,000	(NA)	(NA)	(NA)	(NA)
Phillips.....	3,500	2,950	510.0	1,508,000	4,400	3,500	400.0	1,394,000
Pondera.....	9,700	9,250	1,900.0	17,555,000	(NA)	(NA)	(NA)	(NA)
Teton.....	3,500	3,450	2,300.0	7,933,000	4,600	4,450	1,320.0	5,853,000
Toole.....	7,700	7,700	1,330.0	10,220,000	14,700	14,200	760.0	10,833,000
Other.....	13,800	13,150	610.0	8,058,000	20,800	20,200	1,160.0	23,492,000
North Central.....	54,700	51,800	1,160.0	59,969,000	58,000	55,600	930.0	51,721,000
Daniels.....	11,400	9,700	380.0	3,645,000	7,600	7,600	1,130.0	8,551,000
Dawson.....	2,700	2,300	550.0	1,260,000	(NA)	(NA)	(NA)	(NA)
Richland.....	5,500	5,500	960.0	5,283,000	(NA)	(NA)	(NA)	(NA)
Roosevelt.....	21,900	17,800	500.0	8,980,000	10,400	10,200	1,010.0	10,252,000
Valley.....	28,100	22,600	610.0	13,750,000	18,500	18,500	1,280.0	23,647,000
Other.....	9,100	6,800	440.0	2,962,000	8,500	8,300	1,130.0	9,389,000
Northeast.....	78,700	64,700	550.0	35,880,000	45,000	44,600	1,160.0	51,839,000
Fergus.....	1,500	1,500	810.0	1,210,000	2,000	2,000	1,380.0	2,752,000
Other.....	4,700	4,600	870.0	3,986,000	4,700	4,500	1,240.0	5,586,000
Central.....	6,200	6,100	850.0	5,196,000	6,700	6,500	1,280.0	8,338,000
Other Districts.....	15,400	14,400	1,160.0	16,775,000	10,300	10,300	1,860.0	19,142,000
Montana.....	155,000	137,000	860.0	117,820,000	120,000	117,000	1,120.0	131,040,000

(NA) Not Available.

¹ Counties with no acres planted or counties that are combined into "Other" counties/districts to avoid disclosure of individual information.

Alfalfa Hay: Acreage, Yield, & Production by County & District – Montana: 2017-2018

Counties & Districts ¹	2017			2018		
	Area Harvested	Yield per Acre	Production	Area Harvested	Yield per Acre	Production
	(Acres)	(Tons)	(Tons)	(Acres)	(Tons)	(Tons)
Deer Lodge	4,500	3.70	16,700	4,200	3.35	14,000
Flathead	15,200	3.20	48,500	15,400	2.10	32,500
Granite	7,200	3.25	23,500	6,700	3.45	23,200
Lake	39,200	3.30	129,600	33,700	2.85	95,900
Lincoln	2,600	1.90	4,900	1,800	1.90	3,400
Mineral	1,200	1.35	1,600	1,400	1.00	1,400
Missoula	5,100	2.55	13,100	6,800	2.05	13,800
Powell	16,000	3.50	56,100	15,100	3.10	46,600
Ravalli	9,500	4.45	42,500	7,900	3.60	28,600
Sanders	14,000	2.80	39,500	13,000	2.40	31,300
Northwest	114,500	3.30	376,000	106,000	2.75	290,700
Blaine	40,300	1.70	68,300	50,700	1.75	87,800
Chouteau	21,700	1.60	34,400	24,200	1.45	35,600
Glacier	32,000	1.65	53,300	31,200	2.00	62,600
Hill	14,400	1.45	20,800	(NA)	(NA)	(NA)
Phillips	35,100	1.70	60,000	37,700	1.20	44,300
Pondera	27,900	2.90	80,800	28,400	2.25	63,800
Teton	(NA)	(NA)	(NA)	37,400	3.15	118,100
Toole	14,400	1.60	23,000	15,500	1.50	23,000
Other	38,200	2.15	81,400	27,900	1.20	33,600
North Central	224,000	1.90	422,000	253,000	1.85	468,800
Daniels	(NA)	(NA)	(NA)	28,000	0.80	22,300
Garfield	24,700	0.75	19,000	42,000	1.15	47,800
McCone	(NA)	(NA)	(NA)	27,200	1.20	32,100
Richland	39,200	1.70	67,500	35,000	1.30	46,300
Sheridan	20,600	0.95	19,400	23,000	2.00	46,300
Other	148,500	1.75	263,100	157,800	1.55	242,800
Northeast	233,000	1.60	369,000	313,000	1.40	437,600
Broadwater	22,700	4.50	101,900	21,900	3.95	86,600
Cascade	65,000	1.75	113,700	(NA)	(NA)	(NA)
Fergus	153,400	1.40	211,600	171,000	1.65	282,000
Golden Valley	23,500	2.00	47,100	(NA)	(NA)	(NA)
Judith Basin	86,200	1.50	128,000	84,200	1.70	141,200
Lewis & Clark	21,800	3.30	72,000	22,000	2.95	64,700
Meagher	18,200	3.25	59,400	19,500	2.70	52,400
Musselshell	25,800	1.75	44,600	35,000	1.85	65,400
Petroleum	14,400	1.90	27,200	18,600	2.55	47,700
Wheatland	34,000	1.45	48,500	33,800	2.00	68,400
Other	(NA)	(NA)	(NA)	86,000	2.25	192,600
Central	465,000	1.85	854,000	492,000	2.05	1,001,000
Beaverhead	26,600	3.85	102,500	39,300	4.00	157,600
Gallatin	(NA)	(NA)	(NA)	38,800	3.55	138,000
Jefferson	10,100	3.05	31,000	10,500	3.05	32,200
Madison	38,200	4.05	154,200	48,400	3.70	178,700
Silver Bow	(NA)	(NA)	(NA)	2,000	3.85	7,700
Other	39,600	3.95	156,300	(NA)	(NA)	(NA)
Southwest	114,500	3.90	444,000	139,000	3.70	514,200
Big Horn	41,300	3.40	140,600	47,500	3.05	143,700
Carbon	(NA)	(NA)	(NA)	30,100	2.95	88,800
Park	38,200	2.40	91,500	38,100	2.70	102,000
Stillwater	48,000	1.60	76,800	58,000	1.90	111,500
Sweet Grass	19,600	1.90	37,000	23,300	2.05	48,000
Treasure	8,300	3.50	29,200	(NA)	(NA)	(NA)
Other	67,600	2.95	198,900	54,000	3.10	167,000
South Central	223,000	2.55	574,000	251,000	2.65	661,000
Carter	63,500	0.95	59,900	73,000	1.25	92,200
Custer	35,600	2.55	91,500	46,000	2.75	125,700
Fallon	(NA)	(NA)	(NA)	67,000	1.10	74,100
Powder River	66,500	1.20	80,000	75,000	1.40	105,400
Rosebud	41,300	2.90	120,000	38,000	1.65	63,000
Wibaux	15,000	0.80	12,200	(NA)	(NA)	(NA)
Other	54,100	1.15	62,400	47,000	1.30	61,300
Southeast	276,000	1.55	426,000	346,000	1.50	521,700
Montana	1,650,000	2.10	3,465,000	1,900,000	2.05	3,895,000

(NA) Not Available.

¹ Counties with no acres planted or counties that are combined into "Other" counties/districts to avoid disclosure of individual information.

Other Hay: Acreage, Yield, & Production by County & District – Montana: 2017-2018

Counties & Districts ¹	2017			2018		
	Area Harvested	Yield per Acre	Production	Area Harvested	Yield per Acre	Production
	(Acres)	(Tons)	(Tons)	(Acres)	(Tons)	(Tons)
Deer Lodge	4,500	2.35	10,500	4,500	2.10	9,500
Flathead	(NA)	(NA)	(NA)	10,200	1.45	14,900
Granite	11,500	2.20	25,500	10,300	2.50	25,900
Lincoln	1,500	1.35	2,000	(NA)	(NA)	(NA)
Mineral	1,000	1.00	1,000	1,000	1.20	1,200
Missoula	6,500	2.00	13,000	6,000	1.80	10,700
Powell	24,000	2.05	49,000	23,000	2.20	50,300
Ravalli	16,500	1.90	31,000	15,200	2.40	36,400
Sanders	5,500	1.45	8,000	8,000	1.60	12,900
Other	19,000	1.85	35,000	15,800	1.25	19,900
Northwest	90,000	1.95	175,000	94,000	1.95	181,700
Blaine	19,500	1.40	27,000	22,500	1.40	32,000
Chouteau	(NA)	(NA)	(NA)	24,000	1.85	44,800
Glacier	10,500	1.65	17,500	15,000	1.60	23,700
Hill	20,000	1.30	26,000	14,000	1.45	20,000
Liberty	4,500	1.35	6,000	3,800	1.75	6,600
Phillips	37,000	1.40	51,000	43,300	1.35	57,600
Pondera	8,500	1.80	15,500	12,800	2.25	28,800
Toole	6,000	0.85	5,000	(NA)	(NA)	(NA)
Other	38,000	1.65	63,000	27,600	1.50	40,900
North Central	144,000	1.45	211,000	163,000	1.55	254,400
Daniels	14,000	0.80	11,000	12,300	1.10	13,300
Dawson	22,500	0.75	17,000	29,200	1.70	49,500
Garfield	26,000	1.40	36,500	36,700	1.80	66,400
McCone	19,500	0.80	16,000	35,000	1.50	53,000
Richland	26,500	0.85	22,000	(NA)	(NA)	(NA)
Roosevelt	15,500	1.00	15,500	(NA)	(NA)	(NA)
Sheridan	16,500	0.80	13,500	15,600	1.35	20,900
Valley	16,500	1.35	22,500	26,500	1.20	31,900
Other	(NA)	(NA)	(NA)	74,700	1.55	116,400
Northeast	157,000	1.00	154,000	230,000	1.55	351,400
Broadwater	6,000	2.35	14,000	7,000	2.70	19,000
Cascade	24,000	1.30	31,000	(NA)	(NA)	(NA)
Fergus	32,000	1.10	35,000	52,800	1.55	80,800
Golden Valley	5,500	2.10	11,500	7,400	2.20	16,400
Judith Basin	15,000	1.45	21,500	16,900	1.75	29,500
Lewis & Clark	7,500	1.65	12,500	(NA)	(NA)	(NA)
Meagher	18,500	1.75	32,500	27,900	1.70	47,000
Musselshell	8,500	0.80	7,000	13,500	1.95	26,000
Petroleum	5,500	1.35	7,500	7,400	2.10	15,400
Wheatland	10,500	1.10	11,500	9,600	2.00	19,200
Other	(NA)	(NA)	(NA)	25,000	2.15	54,000
Central	133,000	1.40	184,000	167,500	1.85	307,300
Beaverhead	56,000	2.50	139,000	60,000	2.20	132,600
Jefferson	10,000	1.80	18,000	(NA)	(NA)	(NA)
Madison	(NA)	(NA)	(NA)	25,000	2.10	52,300
Silver Bow	2,000	2.50	5,000	2,000	2.00	4,000
Other	42,000	2.20	93,000	22,500	2.45	54,900
Southwest	110,000	2.30	255,000	109,500	2.25	243,800
Big Horn	12,500	1.50	18,500	14,400	1.55	22,000
Carbon	19,500	2.50	48,500	(NA)	(NA)	(NA)
Park	12,500	1.85	23,000	(NA)	(NA)	(NA)
Stillwater	(NA)	(NA)	(NA)	18,200	1.80	33,000
Sweet Grass	7,500	1.85	14,000	8,000	1.65	13,300
Treasure	3,000	1.50	4,500	3,900	1.55	6,100
Other	27,000	1.95	52,500	49,000	2.10	102,400
South Central	82,000	1.95	161,000	93,500	1.90	176,800
Carter	30,000	1.05	31,000	35,000	1.10	38,000
Custer	(NA)	(NA)	(NA)	28,000	1.10	31,000
Fallon	17,000	1.20	20,000	18,900	1.70	31,800
Powder River	35,000	0.70	24,000	19,000	1.40	26,600
Prairie	11,000	1.45	16,000	12,600	1.45	18,200
Rosebud	15,500	1.35	21,000	14,300	1.45	20,700
Wibaux	(NA)	(NA)	(NA)	14,700	1.25	18,300
Other	25,500	0.90	23,000	(NA)	(NA)	(NA)
Southeast	134,000	1.00	135,000	142,500	1.30	184,600
Montana	850,000	1.50	1,275,000	1,000,000	1.70	1,700,000

(NA) Not Available.

¹ Counties with no acres planted or counties that are combined into "Other" counties/districts to avoid disclosure of individual information.

Cattle & Calves: Number by Class & Calf Crop – Montana: January 1, 2015-2019

Class	2015	2016	2017	2018	2019
	(Head)	(Head)	(Head)	(Head)	(Head)
All Cattle & Calves	2,500,000	2,650,000	2,650,000	2,550,000	2,500,000
Cows & Heifers, That Have Calved.....	1,510,000	1,500,000	1,500,000	1,510,000	1,460,000
Beef Cows.....	1,496,000	1,486,000	1,486,000	1,497,000	1,448,000
Milk Cows.....	14,000	14,000	14,000	13,000	12,000
Calves, Under 500 Pounds	75,000	125,000	130,000	105,000	80,000
Steers, 500 Pounds & Over	175,000	230,000	230,000	210,000	240,000
Heifers, 500 Pounds & Over					
Beef Cow Replacements.....	435,000	420,000	425,000	390,000	380,000
Milk Cow Replacements.....	7,000	8,000	9,000	7,000	8,000
Other Heifers.....	198,000	262,000	256,000	223,000	232,000
Bulls, 500 Pounds & Over.....	100,000	105,000	100,000	105,000	100,000
Cattle on Feed	40,000	50,000	45,000	45,000	40,000
Calf Crop.....	1,470,000	1,450,000	1,480,000	1,450,000	(1)
Unit	Value of Inventory ²				
Value per Head..... (Dollars)	2,040	1,620	1,230	1,350	1,310
Value of Inventory..... (Dollars)	5,100,000	4,293,000	3,259,500	3,442,500	3,275,000

¹ Data available 2020

² Value of all cattle & calves.

Calf Crop & Disposition – Montana: 2009-2018

Year	Calves Born	Inshipments	Marketings ¹		On Farm Slaughter ²	Death Losses	
			Cattle			Cattle	Calves
	(1,000 Head)	(1,000 Head)	(1,000 Head)	(1,000 Head)	(Head)	(Head)	(Head)
2009.....	1,480	105	1,345	245.0	5,000	27,000	63,000
2010.....	1,490	106	1,307	255.0	4,000	23,000	57,000
2011.....	1,470	110	1,278	211.0	4,000	25,000	62,000
2012.....	1,500	150	1,257	205.0	2,000	28,000	58,000
2013.....	1,460	148	1,357	210.0	2,000	29,000	60,000
2014.....	1,470	169	1,376	220.0	3,000	29,000	61,000
2015.....	1,470	160	1,239	150.5	2,500	26,000	62,000
2016.....	1,450	140	1,360	151.0	2,000	22,000	55,000
2017.....	1,480	113	1,445	160.5	3,000	25,000	60,000
2018.....	1,450	125	1,371	150.5	3,500	30,000	70,000

¹ Marketings exclude interfarm sales.

² On farm slaughter excludes animals custom slaughtered in commercial establishments for farmers.

Grazing Fees: Annual Average Rates – Montana: 2009-2018

Year	Per Animal Unit ¹	Cow-Calf	Per Head
	(Dollars per Month)	(Dollars per Month)	(Dollars per Month)
2009.....	18.00	20.20	18.90
2010.....	18.40	20.20	19.30
2011.....	19.40	21.60	19.50
2012.....	20.50	23.60	20.30
2013.....	21.00	23.60	20.80
2014.....	23.00	26.00	23.00
2015.....	23.00	26.00	23.00
2016.....	24.00	26.00	24.00
2017.....	24.50	27.00	24.00
2018.....	24.50	26.00	24.50

¹ Includes animal unit plus cow-calf rate converted to animal unit (AUM) using (1 aum=cow-calf * 0.833)

All Cattle & Calves: Production & Income – Montana: 2009-2018

Year	Production ¹	Marketings ²	Value of Production	Cash Receipts ³	Value of Home Consumption	Gross Income
	(1,000 Pounds)	(1,000 Pounds)	(1,000 Dollars)	(1,000 Dollars)	(1,000 Dollars)	(1,000 Dollars)
2009.....	961,047	1,182,250	773,385	952,014	9,283	961,297
2010.....	1,110,597	1,154,750	1,041,683	1,083,920	11,697	1,095,617
2011.....	1,020,050	1,110,500	1,107,700	1,207,605	16,045	1,223,650
2012.....	1,053,913	1,129,750	1,263,600	1,349,950	12,205	1,362,155
2013.....	1,104,760	1,235,250	1,348,847	1,513,350	12,425	1,525,775
2014.....	1,107,994	1,265,450	1,750,836	1,984,463	14,643	1,999,106
2015.....	1,119,577	1,121,650	1,659,653	1,639,423	12,119	1,651,542
2016.....	1,122,762	1,224,500	1,295,999	1,412,058	9,264	1,421,322
2017.....	1,150,243	1,303,358	1,326,412	1,504,559	14,116	1,518,675
2018.....	1,110,654	1,228,230	1,225,900	1,365,683	12,325	1,378,008

¹ Adjustments made for changes in inventory and in shipments.

² Excludes custom slaughter for use on farms where produced and inter-farm sales within the state.

³ Receipts from marketings and sale of farms slaughter.

Milk & Cream: Marketings, Used on Farm, Income, & Value – Montana: 2014-2018

Unit	2014	2015	2016	2017	2018
Combined Marketings of Milk & Cream					
Milk Sold ¹ (Million Pounds)	296	294	290	283	270
Average Price					
Per 100 Pounds of Milk ²(Dollars)	22.00	14.90	15.80	17.50	16.00
Per Pound of Milkfat.....(Dollars)	5.85	4.01	4.24	4.67	4.21
Value of Milk Marketings(1,000 Dollars)	65,120	43,806	45,820	49,525	43,200
Used for Milk, Cream, & Butter by Producers					
Milk Utilized (Million Pounds)	2.00	2.00	2.00	2.00	2.00
Value(Dollars)	440,000	298,000	316,000	350,000	320,000
Milk Used on Farm for Feed... (Million Pounds)	3.00	3.00	3.00	3.00	2.00
Gross Producer Income ³(1,000 Dollars)	65,560	44,104	46,136	49,875	43,520
Value of Milk Produced ⁴(1,000 Dollars)	66,220	44,551	46,610	50,400	43,840

¹ Milk sold to plants & dealers as whole milk & equivalent amounts of milk for cream. Includes milk produced by dealers' own herds & small amounts sold directly to consumers. Includes milk produced by institutional herds.

² Average price for marketing year.

³ Cash receipts from marketings of milk & cream, plus value of milk used for home consumption.

⁴ Includes value of milk fed to calves.

Sheep & Lamb: Lamb Crop, Farm Slaughter, & Death Loss – Montana: 2010-2019

Year	Ewes 1 Year & Older January 1	Lambs per 100 Ewes January 1	Lamb Crop ¹	Farm Slaughter ²	Deaths	
					Sheep	Lambs
	(Head)	(Number)	(Head)	(Head)	(Head)	(Head)
2010.....	185,000	119	220,000	1,500	13,000	17,000
2011.....	170,000	121	205,000	1,500	12,000	16,000
2012.....	165,000	127	210,000	1,500	12,000	16,000
2013.....	155,000	129	200,000	1,500	11,000	16,000
2014.....	155,000	129	200,000	1,500	12,000	15,000
2015.....	153,000	124	190,000	1,500	11,000	16,000
2016.....	159,000	119	190,000	1,900	11,000	16,000
2017.....	159,000	119	190,000	1,900	11,000	16,000
2018.....	150,000	120	180,000	1,900	11,000	17,000
2019.....	141,000	(3)	(3)	(3)	(3)	(3)

¹ Lamb crop is defined as lambs born in the eastern states & lambs docked or branded in the western states.

² Excludes custom slaughter for farmers at commercial establishments.

³ Data not available till January, 2020.

Wool: Production, Price, & Value – Montana: 2009-2018

Year	Sheep Shorn	Weight per Fleece	Production	Price per Pound ¹	Value of Production ²
	(1,000 Head)	(Pounds)	(1,000 Pounds)	(Dollars)	(1,000 Dollars)
2009.....	230.0	9.3	2,150	1.10	2,365
2010.....	215.0	9.3	2,000	1.60	3,200
2011.....	200.0	9.3	1,850	2.40	4,440
2012.....	200.0	9.0	1,790	2.10	3,759
2013.....	200.0	8.9	1,770	2.20	3,894
2014.....	185.0	9.0	1,660	2.05	3,403
2015.....	205.0	9.0	1,840	1.90	3,496
2016.....	200.0	9.0	1,800	1.90	3,420
2017.....	195.0	9.0	1,750	1.90	3,325
2018.....	180.0	8.9	1,610	2.50	4,025

¹ Marketing year average price.

² Production multiplied by marketing year average price.

Hogs & Pigs: Total Breeding & Market Inventory, Farrowings, Pigs per Litter, Pig Crop, & Marketings – Montana: December 1, 2009-2018

[Farrowings, Pigs per Litter, Pig Crop, & Marketings for the Year, December 1, previous year, through November 30.]

Year	Inventory			Sows Farrowing	Pigs per Litter	Pig Crop	Marketings ¹
	Total	Breeding	Market				
	(1,000 Head)	(1,000 Head)	(1,000 Head)	(1,000 Head)	(Head)	(1,000 Head)	(1,000 Head)
2009.....	175	23	152	42,500	10.14	431	421.0
2010.....	180	23	157	44,500	9.91	441	429.0
2011.....	180	22	158	42,500	10.28	437	432.1
2012.....	175	22	153	43,500	10.39	452	447.8
2013.....	166	24	142	45,000	10.27	462	464.2
2014.....	176	24	152	46,500	10.34	481	491.3
2015.....	175	24	151	45,500	10.73	488	480.0
2016.....	175	24	151	47,000	10.96	515	507.5
2017.....	179	25	154	47,500	10.99	522	507.5
2018.....	192	33	159	53,000	10.96	581	556.0

¹ Includes custom slaughter for use on farms where produced and state outshipments, but excludes interfarm sales within the state.

Hogs & Pigs: Annual Farrowings & Disposition – Montana: 2009-2018

Year	Annual Farrowings ¹			Inshipments	Marketings ²	On Farm Slaughter ³	Death Losses
	Sows Farrowed	Pigs per Litter	Pig Crop				
	(Head)	(Head)	(Head)	(Head)	(Head)	(Head)	(Head)
2009.....	42,500	10.14	431,000	11,000	421,000	1,900	19,100
2010.....	44,500	9.91	441,000	13,000	429,000	2,800	17,200
2011.....	42,500	10.28	437,000	15,000	432,100	2,500	17,400
2012.....	43,500	10.39	452,000	12,000	447,800	2,100	19,100
2013.....	45,000	10.27	462,000	12,000	464,200	2,000	16,800
2014.....	46,500	10.34	481,000	38,500	491,300	2,000	16,200
2015.....	45,500	10.73	488,000	6,000	480,000	2,000	13,000
2016.....	47,000	10.96	515,000	10,000	507,500	2,000	15,500
2017.....	47,500	10.99	522,000	5,000	507,500	2,000	13,500
2018.....	53,000	10.96	581,000	5,000	556,000	2,000	15,000

¹ Annual farrowing refers to the December-November marketing year.

² Marketings include animals custom slaughtered in commercial establishments for use on farms where produced.

³ On farm slaughter excludes animals custom slaughtered in commercial establishments for farmers.

Hogs & Pigs: Production, Marketings, & Income – Montana: 2009-2018

[Dollar values based on data received from U. S. Department of Agriculture's Agricultural Marketing Service]

Year	Production ¹	Marketings ²	Value of Production ³	Cash Receipts ^{3, 4}	Value of Home Consumption	Gross Income
	(1,000 Pounds)	(1,000 Pounds)	(1,000 Dollars)	(1,000 Dollars)	(1,000 Dollars)	(1,000 Dollars)
2009.....	78,601	80,750	33,794	36,502	391	36,893
2010.....	79,932	81,275	43,709	46,771	612	47,383
2011.....	77,175	80,305	54,381	58,889	612	59,501
2012.....	81,659	84,455	58,332	60,486	485	60,971
2013.....	84,479	87,038	61,604	63,231	481	63,712
2014.....	83,619	92,194	71,353	78,079	533	78,612
2015.....	95,693	95,985	59,652	59,623	387	60,010
2016.....	79,697	81,763	48,482	49,321	358	49,679
2017.....	86,586	86,298	54,142	53,800	503	54,303
2018.....	99,512	97,565	57,950	56,717	476	57,193

¹ Adjustments made for changes in inventory and for inshipments.

² Excludes custom slaughter for use on farms where produced and interfarm sales within the State.

³ Includes allowance for higher average price of State inshipments and outshipments of feeder pigs.

⁴ Receipts from marketings and sale of farm slaughter.

Chickens: Inventory by Class & Total Value – Montana: December 1, 2009-2018

Year	All Layers (1,000 Head)	Pullets (1,000 Head)	All Chickens		
			Number (1,000 Head)	Value per Head (Dollars)	Total Value (1,000 Dollars)
2009	375	165	540	4.10	2,214
2010	375	160	535	4.80	2,568
2011	380	165	545	4.00	2,180
2012	464	210	674	6.40	4,314
2013	455	184	639	4.80	3,067
2014	458	162	620	5.10	3,162
2015	439	150	589	8.50	5,007
2016	412	126	538	5.70	3,067
2017	942	244	1,186	5.70	6,760
2018	1,000	236	1,236	8.60	10,630

Eggs: Production & Income – Montana: 2009-2018

Year ¹	Average Number of Layers (1,000)	Eggs per Layer (Number)	Total Produced (Million)	Gross Income (1,000 Dollars)
2009	351	305	107	6,890
2010	375	317	119	6,619
2011	375	317	119	8,682
2012	384	313	120	8,642
2013	436	326	142	10,642
2014	454	311	141	12,775
2015	456	312	142	22,500
2016	436	312	136	7,870
2017	523	294	154	11,192
2018	900	325	293	33,674

¹ December of the preceding year.

Honey: Number of Colonies, Yield, Production, Stocks, Price, & Value – Montana: 2009-2018

[Producers with 5 or more colonies.]

Year	Honey Producing Colonies ¹	Yield per Colony	Production	Stocks December 15 ²	Average Price per Pound ³	Value of Production ⁴
	(Number)	(Pounds)	(1,000 Pounds)	(Pounds)	(Dollars)	(1,000 Dollars)
2009	146,000	70	10,220	3,577,000	1.46	14,921
2010	157,000	74	11,618	2,905,000	1.58	18,356
2011	145,000	92	13,340	3,202,000	1.70	22,678
2012	145,000	52	7,540	2,413,000	1.95	14,703
2013	159,000	94	14,946	5,231,000	2.09	31,237
2014	162,000	88	14,256	5,132,000	2.09	29,795
2015	146,000	83	12,118	3,757,000	1.94	23,509
2016	159,000	77	12,243	3,183,000	1.77	21,670
2017	145,000	72	10,440	2,506,000	2.24	23,386
2018	160,000	92	14,720	3,680,000	1.92	28,262

¹ Honey producing colonies are the maximum number of colonies from which honey was taken during the year. It is possible to take honey from colonies which did not survive the entire year.

² Stocks held by producers.

³ Average price per pound based on expanded sales.

⁴ Value of production is equal to production multiplied by average price per pound.

Commercial Red Meat Production by Month – Montana: 2009-2018

Year	Jan	Feb	Mar	Apr	May	Jun	Jul	Aug	Sep	Oct	Nov	Dec
	(Million Pounds)	(Million Pounds)	(Million Pounds)	(Million Pounds)	(Million Pounds)	(Million Pounds)	(Million Pounds)	(Million Pounds)	(Million Pounds)	(Million Pounds)	(Million Pounds)	(Million Pounds)
2009	1.0	0.9	0.9	1.7	1.6	1.7	1.3	1.3	1.3	2.2	2.1	2.3
2010	1.0	0.9	0.9	1.6	1.5	1.7	1.4	1.7	1.4	1.8	1.7	1.7
2011	0.8	0.8	0.8	1.6	1.5	1.7	1.0	1.2	1.1	1.8	1.8	1.8
2012	0.8	0.7	0.7	1.7	1.5	1.8	1.1	1.3	1.0	2.0	1.8	1.8
2013	0.9	0.8	0.8	1.6	1.5	1.7	1.2	1.3	1.0	2.0	1.8	1.9
2014	0.8	0.9	1.3	1.4	1.3	1.5	1.8	1.3	1.5	2.0	1.5	1.3
2015	0.6	0.7	1.8	1.2	1.6	1.3	1.1	1.1	1.9	1.4	2.5	1.1
2016	0.9	1.1	2.0	1.1	1.6	1.4	0.7	2.0	2.8	1.9	1.2	1.1
2017	0.8	1.0	2.5	2.0	2.8	1.8	1.0	1.5	3.4	2.8	1.5	1.3
2018	0.9	1.2	1.9	2.8	1.8	1.3	1.0	1.2	2.0	2.9	3.1	1.1

Monthly Slaughter by Class – Montana: 2009-2018

Cattle & Calves												
Year	Jan	Feb	Mar	Apr	May	Jun	Jul	Aug	Sep	Oct	Nov	Dec
	(1,000 Head)	(1,000 Head)	(1,000 Head)	(1,000 Head)	(1,000 Head)	(1,000 Head)	(1,000 Head)	(1,000 Head)	(1,000 Head)	(1,000 Head)	(1,000 Head)	(1,000 Head)
2009	1.3	1.2	1.1	2.2	2.1	2.2	1.5	1.4	1.4	2.8	2.7	2.9
2010	1.2	1.2	1.1	2.0	2.0	2.1	1.6	1.9	1.7	2.2	2.1	2.2
2011	1.0	0.9	0.9	2.1	2.0	2.2	1.2	1.3	1.3	2.4	2.2	2.3
2012	1.0	0.9	0.9	2.1	2.1	2.3	1.3	1.4	1.1	2.6	2.2	2.3
2013	1.1	1.0	1.0	2.1	2.1	2.2	1.3	1.4	1.1	2.6	2.3	2.5
2014	1.0	1.1	1.8	1.8	1.8	2.0	2.2	1.4	1.9	2.6	1.9	1.7
2015	0.8	0.8	2.3	1.5	2.1	1.6	1.2	1.2	2.1	1.8	3.1	1.3
2016	1.2	1.4	2.6	1.4	2.0	1.6	0.7	2.2	3.3	2.4	1.4	1.4
2017	0.9	1.1	2.7	2.1	3.0	1.9	0.9	1.3	3.4	2.8	1.5	1.3
2018	0.9	1.3	2.1	2.9	1.9	1.4	0.9	1.1	1.9	3.0	3.1	1.2
Sheep & Lambs												
2009	0.2	0.2	0.2	0.3	0.3	0.3	0.3	0.4	0.4	0.6	0.5	0.5
2010	0.2	0.2	0.2	0.2	0.3	0.3	0.3	0.4	0.4	0.5	0.4	0.4
2011	0.2	0.1	0.2	0.2	0.3	0.3	0.2	0.4	0.4	0.6	0.5	0.4
2012	0.2	0.2	0.1	0.2	0.3	0.3	0.3	0.3	0.5	0.5	0.5	0.5
2013	0.3	0.2	0.4	0.2	0.3	0.2	0.4	0.5	0.5	0.6	0.5	0.5
2014	0.2	0.3	0.2	0.4	0.3	0.5	0.5	0.4	0.4	0.7	0.5	0.4
2015	0.2	0.2	0.6	0.4	0.3	0.5	0.4	0.5	0.5	0.4	0.6	0.5
2016	0.2	0.3	0.6	0.4	0.4	0.6	0.3	0.6	0.6	0.5	0.5	0.4
2017	0.2	0.2	0.4	0.4	0.6	0.7	0.3	0.5	0.6	0.6	0.3	0.4
2018	0.3	0.2	0.3	0.4	0.3	0.4	0.4	0.4	0.4	0.6	0.6	0.4
Hogs & Pigs												
2009	0.7	0.7	0.6	1.0	1.1	1.2	1.3	1.5	1.2	1.3	1.3	1.4
2010	0.7	0.7	0.7	1.0	1.0	1.1	1.4	1.6	1.3	1.2	1.3	1.4
2011	0.7	0.7	0.7	1.1	1.1	1.2	1.2	1.5	1.2	1.2	1.3	1.4
2012	0.7	0.7	0.7	1.1	1.1	1.3	1.3	1.4	1.4	1.6	1.7	1.8
2013	0.8	0.7	0.8	1.1	1.1	1.2	1.4	1.5	1.5	1.4	1.5	1.7
2014	0.6	0.8	0.7	1.5	1.1	0.9	1.7	1.6	1.4	1.7	1.1	1.2
2015	0.6	0.7	1.8	1.0	1.2	1.1	1.3	1.6	2.6	1.1	2.8	1.2
2016	0.9	0.9	1.9	1.1	1.3	1.3	1.1	2.6	3.2	1.6	1.2	0.9
2017	0.6	0.9	1.9	1.5	1.8	1.2	1.2	1.9	3.0	2.1	1.6	1.1
2018	0.7	0.8	1.2	2.1	1.1	0.9	1.3	1.5	1.9	2.1	2.3	0.9

All Cattle & Calves, Beef Cows & Heifers That Have Calved, Inventory by County – Montana: January 1, 2017-2019

County & Districts ¹	All Cattle & Calves			Beef Cows & Heifers That Have Calved		
	(2017)	(2018)	(2019)	(2017)	(2018)	(2019)
Deer Lodge	5,300	7,000	7,000	(D)	4,900	4,700
Flathead	8,500	8,500	8,400	(D)	(D)	(D)
Granite	19,500	19,600	19,200	(D)	14,300	13,900
Lake	42,000	50,000	48,000	26,500	27,000	26,000
Lincoln	2,400	2,100	2,100	1,500	(D)	(D)
Mineral	300	400	400	(D)	(D)	(D)
Missoula	10,800	5,500	5,700	5,200	3,700	3,600
Powell	39,500	35,500	35,000	(D)	(D)	(D)
Ravalli	32,500	27,500	27,000	15,200	15,300	14,800
Sanders	13,100	14,000	15,400	9,400	10,200	9,900
Northwest						
Blaine	69,000	72,000	72,000	45,000	(D)	(D)
Chouteau	37,500	38,000	37,500	24,500	(D)	(D)
Glacier	48,000	44,500	43,500	30,000	31,500	30,500
Hill	24,000	18,000	16,700	(D)	12,200	11,800
Liberty	15,700	10,400	10,200	10,300	7,600	7,300
Phillips	86,000	78,000	79,000	53,000	52,000	50,000
Pondera	26,500	24,500	24,000	17,600	15,400	14,900
Teton	56,000	48,000	45,500	23,500	(D)	(D)
Toole	21,500	18,500	18,100	13,100	12,100	11,700
North Central						
Daniels	14,500	14,500	14,300	9,600	11,500	11,100
Dawson	41,000	37,000	36,000	25,500	24,500	24,000
Garfield	87,000	75,000	74,000	53,000	47,500	46,000
McCone	37,500	40,500	40,000	(D)	(D)	(D)
Richland	68,000	64,000	63,000	35,000	33,500	32,500
Roosevelt	23,000	27,500	27,000	(D)	20,000	19,300
Sheridan	27,500	18,000	17,500	(D)	(D)	(D)
Valley	66,000	63,000	62,000	(D)	(D)	(D)
Northeast						
Broadwater	24,000	23,500	23,000	(D)	(D)	(D)
Cascade	63,000	66,000	65,000	38,000	39,500	38,500
Fergus	99,000	120,000	120,000	65,000	80,000	78,000
Golden Valley	22,500	16,500	16,300	(D)	(D)	(D)
Judith Basin	84,000	73,000	72,000	(D)	(D)	(D)
Lewis & Clark	38,500	40,500	40,000	24,500	24,500	23,500
Meagher	42,000	51,000	51,000	(D)	(D)	(D)
Musselshell	34,500	39,500	38,500	22,000	25,500	24,500
Petroleum	33,000	23,000	22,000	19,100	13,500	13,000
Wheatland	41,000	43,500	42,500	(D)	(D)	(D)
Central						
Beaverhead	155,000	130,000	125,000	80,000	72,000	70,000
Gallatin	50,000	41,500	41,000	19,000	16,300	15,800
Jefferson	27,500	25,000	24,500	17,100	16,800	16,300
Madison	75,000	80,000	80,000	47,000	53,000	51,000
Silver Bow	4,900	4,000	3,700	(D)	2,600	2,500
Southwest						
Big Horn	76,000	85,000	83,000	49,000	53,000	51,000
Carbon	73,000	80,000	78,000	35,500	34,000	33,000
Park	44,500	39,000	37,000	30,500	25,000	24,000
Stillwater	43,000	47,500	46,500	23,500	26,000	25,500
Sweet Grass	38,000	36,000	33,500	26,000	24,500	23,500
Treasure	28,000	29,000	28,000	13,100	(D)	(D)
Yellowstone	120,000	115,000	110,000	(D)	37,000	36,000
South Central						
Carter	95,000	92,000	91,000	53,000	55,000	53,000
Custer	115,000	95,000	90,000	(D)	56,000	54,000
Fallon	56,000	47,500	46,000	30,500	29,000	28,000
Powder River	91,000	86,000	84,000	53,000	49,500	48,000
Prairie	34,500	45,000	48,000	21,000	24,000	23,000
Rosebud	95,000	93,000	91,000	51,000	51,000	49,000
Wibaux	24,500	21,500	21,000	(D)	(D)	(D)
Southeast						
Other Counties				370,300	346,100	334,900
Montana	2,650,000	2,550,000	2,500,000	1,486,000	1,497,000	1,448,000

(D) Withheld to avoid disclosing data for individual operations.

¹ Counties with no inventory or counties that are combined into "Other" counties/districts to avoid disclosure of individual information.

Milk Cows & Heifers That Have Calved, Inventory by County – Montana: January 1, 2017-2019

County & Districts ¹	Milk Cows & Heifers That Have Calved		
	(2017)	(2018)	(2019)
Deer Lodge	(D)	(D)	(D)
Flathead	(D)	(D)	(D)
Lake	300	300	700
Lincoln.....	(D)	(D)	(D)
Missoula.....	(D)	(D)	(D)
Powell	(D)	(D)	(D)
Ravalli	900	800	800
Sanders.....	(D)	(D)	(D)
Northwest			
Blaine	100	(D)	(D)
Glacier.....	1,100	1,000	900
Hill	(D)	(D)	(D)
Liberty	500	500	400
Phillips.....	(D)	(D)	(D)
Pondera	1,000	900	800
Teton.....	200	(D)	(D)
Toole	500	400	300
North Central			
Dawson	(D)	(D)	(D)
Garfield	(D)	(D)	(D)
Richland	(D)	(D)	(D)
Northeast			
Broadwater.....	(D)	(D)	(D)
Cascade	1,300	1,200	1,100
Fergus.....	500	400	400
Golden Valley.....	(D)	(D)	(D)
Judith Basin	(D)	(D)	(D)
Lewis & Clark	100	100	100
Meagher.....	(D)	(D)	(D)
Musselshell	(D)	(D)	(D)
Petroleum.....	(D)	(D)	(D)
Wheatland.....	(D)	(D)	(D)
Central			
Beaverhead.....	(D)	(D)	(D)
Gallatin.....	4,300	3,900	3,500
Madison	(D)	(D)	(D)
Silver Bow	(D)	(D)	(D)
Southwest			
Carbon	(D)	(D)	(D)
Park	100	100	100
Stillwater	(D)	(D)	(D)
Sweet Grass.....	(D)	(D)	(D)
Yellowstone.....	(D)	(D)	300
South Central			
Carter	(D)	(D)	(D)
Custer	(D)	(D)	(D)
Powder River.....	(D)	(D)	(D)
Prairie.....	(D)	(D)	(D)
Rosebud.....	(D)	(D)	(D)
Southeast			
Other Counties	3,100	3,400	2,600
Montana	14,000	13,000	12,000

(D) Withheld to avoid disclosing data for individual operations.

¹ Counties with no inventory or counties that are combined into "Other" counties/districts to avoid disclosure of individual information.

All Sheep & Lambs: Inventory by County – Montana: January 1, 2017-2019

County & Districts ¹	All Sheep & Lambs		
	(2017)	(2018)	(2019)
Deer Lodge	600	400	200
Flathead	400	600	700
Granite	400	800	1,100
Lake	2,000	1,700	1,400
Lincoln	400	(D)	(D)
Missoula	1,400	1,100	700
Powell	400	500	500
Ravalli	2,500	2,300	2,200
Sanders	600	400	200
Northwest			
Blaine	(D)	(D)	3,000
Chouteau	1,600	1,000	600
Glacier	1,500	1,000	600
Hill	600	500	400
Liberty	(D)	(D)	
Phillips	5,900	4,400	2,800
Pondera	4,700	4,700	4,500
Teton	6,900	6,900	6,700
Toole	3,000	2,700	2,300
North Central			
Daniels	100	200	300
Dawson	1,700	1,900	2,000
Garfield	17,500	15,000	12,400
McCone	7,100	7,800	8,100
Richland	4,300	4,500	4,500
Roosevelt	800	700	600
Sheridan	1,000	700	500
Valley	1,000	800	500
Northeast			
Broadwater	(D)	(D)	2,400
Cascade	6,100	6,300	6,300
Fergus	2,400	2,700	2,900
Golden Valley	18,700	17,700	16,400
Judith Basin	7,000	7,500	7,900
Lewis & Clark	2,900	2,900	2,300
Meagher	(D)	(D)	3,000
Musselshell	2,300	3,400	4,500
Petroleum	(D)	(D)	(D)
Wheatland	10,600	11,500	12,300
Central			
Beaverhead	15,700	14,500	13,100
Gallatin	1,900	2,700	3,100
Jefferson	900	2,000	2,900
Madison	3,500	4,000	4,400
Silver Bow	200	200	300
Southwest			
Big Horn	600	500	400
Carbon	7,700	7,200	6,700
Park	2,500	3,200	3,800
Stillwater	17,600	15,500	13,300
Sweet Grass	4,400	3,900	3,400
Treasure	(D)	(D)	500
Yellowstone	2,700	2,400	2,000
South Central			
Carter	25,500	23,000	20,500
Custer	4,900	5,200	5,400
Fallon	1,300	1,800	2,200
Powder River	9,000	9,900	10,400
Prairie	400	700	1,000
Rosebud	1,000	2,400	3,700
Wibaux	100	900	1,600
Southeast			
Other Counties	13,700	12,400	1,500
Montana	230,000	225,000	215,000

(D) Withheld to avoid disclosing data for individual operations.

¹ Counties with no inventory or counties that are combined into "Other" counties/districts to avoid disclosure of individual information.

Hogs & Pigs: Inventory by County – Montana: December 1, 2016-2018

County & Districts ¹	Hogs & Pigs		
	(2016)	(2017)	(2018)
Flathead.....	1,200	1,200	1,300
Granite.....	200	(D)	(D)
Lake.....	300	200	200
Missoula.....	(D)	100	200
Ravalli.....	300	200	300
Sanders.....	100	200	300
Northwest			
Glacier.....	21,000	20,000	21,500
Liberty.....	18,000	19,600	21,000
Phillips.....	200	(D)	(D)
Pondera.....	23,500	24,500	26,000
Toole.....	9,700	(D)	(D)
North Central			
Garfield.....	(D)	(D)	100
Roosevelt.....	(D)	100	100
Northeast			
Broadwater.....	(D)	300	300
Cascade.....	24,500	30,000	32,000
Fergus.....	300	200	200
Judith Basin.....	200	100	100
Wheatland.....	15,000	17,000	18,200
Central			
Beaverhead.....	100	(D)	
Gallatin.....	300	200	200
Jefferson.....	100	(D)	(D)
Madison.....	(D)	(D)	100
Southwest			
Carbon.....	200	200	200
Stillwater.....	100	200	300
Sweet Grass.....	(D)	(D)	100
South Central			
Rosebud.....	(D)	600	700
Other Counties.....	59,700	64,100	68,600
Montana.....	175,000	179,000	192,000

(D) Withheld to avoid disclosing data for individual operations.

¹ Counties with no inventory or counties that are combined into "Other" counties/districts to avoid disclosure of individual information.

Report	Frequency	Approximate Date of Publication
Montana Reports:		
Crop Progress Report Weekly	Weekly	Mondays, April-November
Crop Progress Report Monthly	Monthly	1st Monday of the Month, December-March
Montana Agriculture Statistical Bulletin	Annually	November
Wheat Varieties	Annually	Mid-July
National Reports:		
Crops:		
Crop Forecasts	Monthly	12th of the Month
Winter Wheat Seedings	Annually	Mid-January
Prospective Plantings	Annually	Late March
Annual Crop Summary	Annually	Mid-January
Crop Values	Annually	Late February
Grain Stocks	Quarterly	January, March, June, September
Livestock, Dairy, & Poultry:		
Livestock Slaughter	Monthly	15 of the Month, December-June
Cattle Inventory & Calf Crop	Annually	Late January
Hog Inventory & Pig Crop	Quarterly	March, June, September, & December
Meat Animals Marketings & Cash Receipts	Annually	Late April
Prices:		
Agricultural Prices	Monthly	End of the Month

Statistics in the National program are released in Washington D.C. and locally according to strict, predetermined dates.

All Reports Are Available on the Internet
Montana's Website: www.nass.usda.gov/mt/

The screenshot shows the USDA National Agricultural Statistics Service website. The header includes the USDA logo, the text 'United States Department of Agriculture National Agricultural Statistics Service', and social media icons for Twitter, YouTube, RSS, and Facebook. A search bar is located in the top right corner.

The main navigation menu includes: Data & Statistics, Publications, Newsroom, Surveys, Census, About NASS, Contact Us, and Help. The breadcrumb trail reads: Home / Statistics by State / Montana / Subscribe to MT Reports. A dropdown menu for 'Statistics by State' is visible.

The page content is titled 'USDA's National Agricultural Statistics Service Montana Field Office (Part of the Mountain Regional Field Office)'. It features a 'Subscribe to MT reports' section with the following details:

- Electronic Reports:** Complete this form and click on the Subscribe button to receive Montana agricultural statistics reports via Email. You can also [sign up and subscribe to National reports](#) through the USDA Economics, Statistics and Market Information System.
- Select the Reports to Subscribe:** A dropdown menu is set to 'Montana All Reports'.
- Form Fields:** Two text boxes for '*Enter your first and last name:' and '*Enter your Email:'.
- Buttons:** 'Subscribe' and 'Unsubscribe' buttons.
- Printed Reports:** Printed Montana reports are also available by mail. [Click here for subscription instructions.](#)

At the bottom of the page, there is a footer with contact information: 'Questions? Comments? Suggestions? Please email nassrfomtr@nass.usda.gov or call (406) 441-1240'. The footer also includes the tagline '~ Providing Timely, Accurate and Useful Statistics in Service to U.S. Agriculture ~' and a list of links: NASS Home, USDA.gov, Data.gov, USA.gov, WhiteHouse.gov, Economics, Statistics and Market Information System (ESMIS), No Fear Act - NASS Data, FOIA, Privacy Policy and Assessments, Security Statement, Information Quality, Non-Discrimination Statement, Guidance Documents, and USDA Policies and Links. The date 'Last Modified: 02/05/2019' is also present.



USDA-NASS

MOUNTAIN REGION: MONTANA FIELD OFFICE
FACT FINDERS FOR AGRICULTURE

10 West 15th Street, Suite 3100
Helena, MT 59626-3100
(800) 835-2612
nass-mt@nass.usda.gov
www.nass.usda.gov/mt



303 N. Roberts
Helena, MT 59620
(406)444-3144
agr@mt.gov
www.agr.mt.gov