

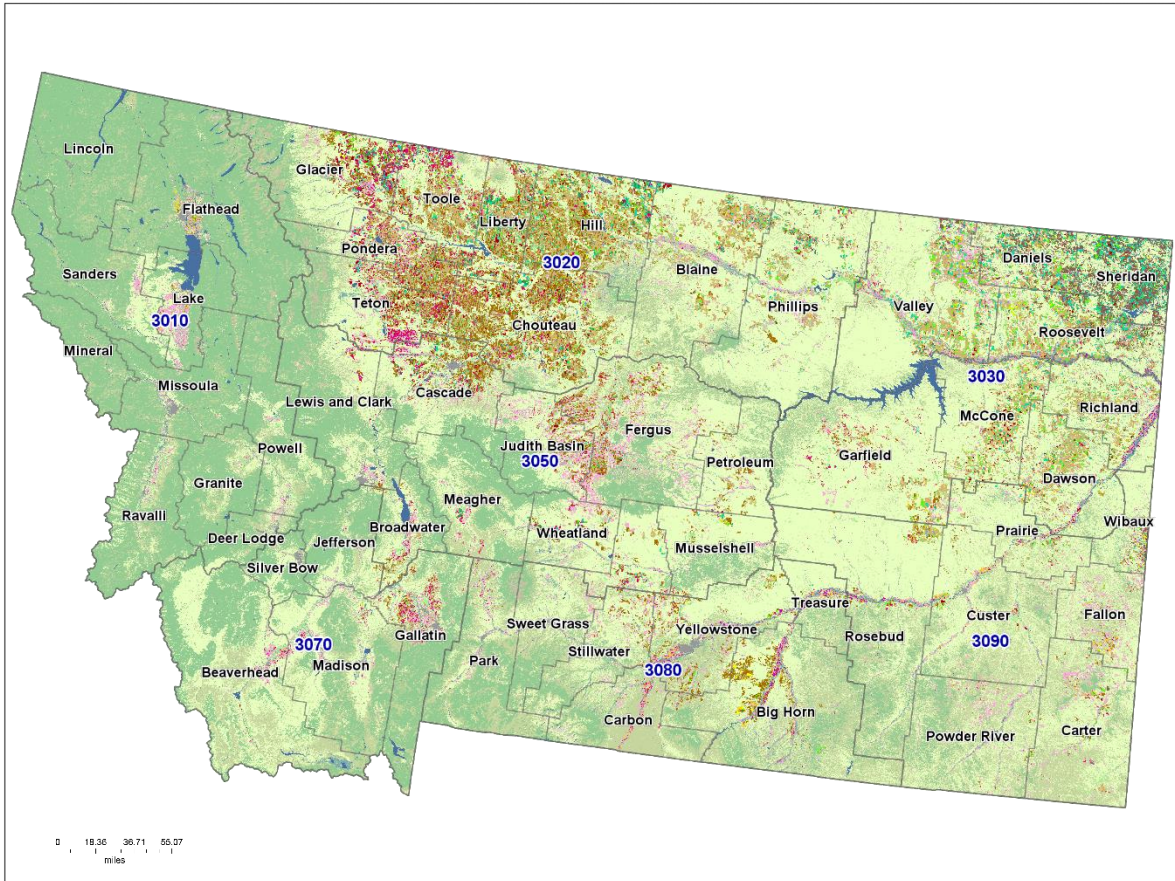
Montana

AGRICULTURAL STATISTICS

2018



Montana Cropland Data Layer



Land Cover Categories
(by decreasing acreage)

AGRICULTURE*

- Grass/Pasture
- Spring Wheat
- Alfalfa
- Winter Wheat
- Other Hay/Non Alfalfa
- Fallow/Idle Cropland
- Durum Wheat
- Barley
- Lentils
- Peas
- Dry Beans
- Canola
- Corn
- Mustard
- Flaxseed
- Sugarbeets

NON-AGRICULTURE**

- Evergreen Forest
- Shrubland
- Woody Wetlands
- Developed/Open Space
- Open Water
- Barren

On the Cover

Chickpeas at Inbody Farms near Choteau, MT

Photograph by: Todd Klassy

MONTANA AGRICULTURAL STATISTICS

Issn: 1095-7278

Volume LV

October 2018

State of Montana
Steve Bullock, Governor

Issued Cooperatively by



Montana Department of Agriculture
Ben Thomas, Director
303 N. Roberts, Room 317
Helena, MT 59620



U.S. Department of Agriculture
National Agricultural Statistics Service
Hubert Hamer, Administrator
Washington, D.C. 20250

Complied by
**USDA, NASS, MOUNTAIN REGION –
MONTANA FIELD OFFICE**

Eric Sommer, State Statistician
Thomas Chard II, Survey Coordinator
10 West 15th Street, Suite 3100
Helena, MT 59626-3100
(406) 389-3600 or 1-800-835-2612
E-mail: nassrfomtr@nass.usda.gov
Website: www.nass.usda.gov/mt

Table of Contents

Comments from the Governor.....	4
Message from the Director of MT Department of Agriculture.....	5
Notes from the State Statistician.....	5
General	
Montana Department of Agriculture	6-7
Montana's Annual & Growing Season Precipitation 2017.....	8
Montana Facts & Figures.....	9
Farm Counts & Measurements	9
Land in Farms & Ranches	9
Number of Farms – Montana: 1910-1949	10
Number of Farms, All Land in Farms, & Average Size of Farms – Montana: 1950-2017	10
Census of Agriculture: Number of Farms by Size.....	11
Census of Agriculture: Number of Farms by Value of Sales.....	11
Census of Agriculture: Number of Farms Reporting Cropland.....	11
Farms: Acres by Economic Sales Class – Montana: 2008-2017	12
Farms: Number of Farms, Land in Farms, & Average Size – Montana & U.S. 2008-2017.....	12
Farm Real Estate: Average Value per Acre by Type of Land – Montana & United States: 2008-2017.....	12
Census of Agriculture: Number of Farms, Land in Farms, & Average Farms Size, by County - Montana: 2007 & 2012	13
Economics	
Selected Montana Industries Comparison, 2017.....	14
Montana Selected Industries Comparison, 2015-2017.....	14
Value Added to the U.S. Economy by the Agricultural Sector – Montana: 2013-2017	15
Farm Income & Expenses by Counties & Districts – Montana: 2017.....	16
Cash Rent: Dollars per Acre by Counties & Districts – Montana: 2013-2014.....	17
Cash Rent: Dollars per Acre by Counties & Districts – Montana: 2016-2017.....	18
Farm Real Estate Values, Annual Cash Rent per Acre, & Rent to Value – Montana: 2009-2018.....	19
Cash Receipts from Sales of Principal Products & Government Payments – Montana: 2008-2017.....	19
Cash Receipts from Sales of Principal Products & Government Payments – Montana: 2017.....	19
Cash Receipts from Marketing by Commodities – Montana: 2013-2017	20
Monthly Prices Received by Farmers, Select Commodities – Montana: 2013-2017	21
Marketing Year Average Prices, by Commodity – Montana: 2009-2017.....	22
Marketing of Major Montana Crops: Estimated Percent of Monthly Farm Sales – Montana: 2012-2017.....	22
Rankings	
Record Highs & Lows: Acreage, Yield, & Production of Crops – Montana.....	23
Record Highs & Lows: Livestock, Poultry, Honey, & Mink – Montana.....	24
Rank & Quantity Produced, Selected Commodities – Montana, Leading State, & United States: 2017	25
State Crops	
Crop Summary – Montana: 2017	26
Crop Summary – Montana: 2016.....	26
Usual Planting & Harvesting Dates by Crop – Montana	27
Acreage, Production & Value	
All Wheat: Area Planted & Harvested, Yield, Production, Price, & Value – Montana: 2008-2017.....	27
Winter Wheat: Area Planted & Harvested, Yield, Production, Price, & Value – Montana: 2008-2017	27
Winter Wheat: Acreage & Production for Irrigated & Non-Irrigated Practices – Montana: 2008-2017	28
Durum Wheat: Area Planted & Harvested, Yield, Production, Price, & Value – Montana: 2008-2017.....	28
Other Spring Wheat: Area Planted & Harvested, Yield, Production, Price, & Value – Montana: 2008-2017.....	28
Other Spring Wheat: Acreage & Production for Irrigated & Non-Irrigated Practices – Montana: 2008-2017.....	29
Barley: Area Planted & Harvested, Yield, Production, Price, & Value – Montana: 2008-2017.....	29
Oats: Area Planted & Harvested, Yield, Production, Price, & Value – Montana: 2008-2017	29
Corn: Acreage, Production, & Value – Montana: 2008-2017	30
Potatoes: Area Planted & Harvested, Yield, Production, Price, & Value – Montana: 2008-2017.....	30
Sugar Beets: Area Planted & Harvested, Yield, Production, Price, & Value – Montana: 2008-2017	30
Lentils: Area Planted & Harvested, Yield, Production, Price, & Value – Montana: 2008-2017	31
Dry Edible Beans: Area Planted & Harvested, Yield, Production, Price, & Value – Montana: 2008-2017	31
Pinto Beans: Acreage & Production – Montana: 2008-2017.....	31
Garbanzo Beans: Acreage & Production – Montana: 2008-2017	31
Dry Edible Peas: Area Planted & Harvested, Yield, Production, Price, & Value – Montana: 2008-2017	32
Austrian Winter Peas: Area Planted & Harvested, Yield, Production, Price, & Value – Montana: 2008-2017.....	32
Canola: Area Planted & Harvested, Yield, Production, Price, & Value – Montana: 2008-2017	32
Camelina: Acreage & Production – Montana: 2008-2017.....	33

Acreage, Production & Value (Continued)

Mustard Seed: Acreage & Production – Montana: 2008-2017.....	33
Flaxseed: Area Planted & Harvested, Yield, Production, Price, & Value – Montana: 2008-2017	33
Safflower: Area Planted & Harvested, Yield, Production, Price, & Value – Montana: 2008-2017	33
Sweet Cherry: Acreage, Yield, Production, Price, & Value – Montana: 2009-2017.....	34
Alfalfa Seed: Acreage, Production, & Value – Montana: 2008-2017.....	34
All Hay: Area Harvested, Yield, Production, Price, & Value – Montana: 2008-2017	34
Alfalfa Hay: Area Harvested, Yield, Production, Price, & Value – Montana: 2008-2017	35
Other Hay: Area Harvested, Yield, Production, Price, & Value – Montana: 2008-2017	35
All Wheat, All Barley, & Oats, Quarterly Stocks – Montana.....	36
Planted Wheat Acreage by Type – Montana: 2008-2017	36

County Crops

Winter Wheat: Acreage, Yield, & Production by County & District – Montana: 2016.....	37
Winter Wheat: Acreage, Yield, & Production by County & District – Montana: 2017.....	38
Spring Wheat: Acreage, Yield, & Production by County & District – Montana: 2016.....	39
Spring Wheat: Acreage, Yield, & Production by County & District – Montana: 2017.....	40
Durum Wheat: Acreage, Yield, & Production by County & District – Montana: 2016	41
Durum Wheat: Acreage, Yield, & Production by County & District – Montana: 2017	41
Barley: Acreage, Yield, & Production by County & District – Montana: 2016.....	42
Barley: Acreage, Yield, & Production by County & District – Montana: 2017	43
Oats: Acreage, Yield, & Production by County & District – Montana: 2016	44
Oats: Acreage, Yield, & Production by County & District – Montana: 2017	44
Dry Peas: Acreage, Yield, & Production by County & District – Montana: 2016-2017	45
All Dry Beans: Acreage, Yield, & Production by County & District – Montana: 2016-2017.....	46
Garbanzo Beans: Acreage, Yield, & Production by County & District – Montana: 2016-2017.....	46
Lentils: Acreage, Yield, & Production by County & District – Montana: 2016-2017.....	47
Potatoes: Acreage, Yield, & Production by County & District – Montana: 2016-2017	47
Sugar Beets: Acreage, Yield, & Production by County & District – Montana: 2016-2017.....	48
Canola: Acreage, Yield, & Production by County & District – Montana: 2016-2017.....	48
Alfalfa Hay: Acreage, Yield, & Production by County & District – Montana: 2016-2017	49
Other Hay: Acreage, Yield, & Production by County & District – Montana: 2016-2017	50

Cattle & Calves

Cattle & Calves: Number by Class & Calf Crop – Montana: January 1, 2014-2018.....	51
Calf Crop & Disposition – Montana: 2008-2017	51
Grazing Fees: Annual Average Rates – Montana: 2008-2017	51
All Cattle & Calves: Production & Income – Montana: 2008-2017	52
Milk & Cream: Marketings, Used on Farm, Income, & Value – Montana: 2013-2017	52

Sheep, Lamb, & Goats

Sheep & Lamb: Lamb Crop, Farm Slaughter, & Death Loss – Montana: 2009-2018.....	53
Wool: Production, Price, & Value – Montana: 2008-2017.....	53

Hogs & Pigs

Hogs & Pigs: Total Breeding & Market Inventory, Farrowings, Pigs per Litter, Pig Crop, & Marketings – Montana: December 1, 2008-2017.....	54
Hogs & Pigs: Annual Farrowings & Disposition – Montana: 2008-2017	54
Hogs & Pigs: Production, Marketings, & Income – Montana: 2008-2017.....	54

Miscellaneous Livestock & Livestock Products

Chickens: Inventory by Class & Total Value – Montana: December 1, 2008-2017	55
Eggs: Production & Income – Montana: 2008-2017	55
Honey: Number of Colonies, Yield, Production, Stocks, Price, & Value – Montana: 2008-2017	55

Commercial Livestock Slaughter

Commercial Red Meat Production by Month – Montana: 2008-2017	56
Monthly Slaughter by Class – Montana: 2008-2017.....	56

County Livestock

All Cattle & Calves, Beef Cows & Heifers That Have Calved, Inventory by County – Montana: January 1, 2016-2018	57
Milk Cows & Heifers That Have Calved, Inventory by County – Montana: January 1, 2016-2018	58
All Sheep & Lambs: Inventory by County – Montana: January 1, 2016-2018	59
Hogs & Pigs: Inventory by County – Montana: December 1, 2015-2017.....	60

General Information

NASS Report Release Schedule	61
How to Subscribe to NASS Reports.....	61

OFFICE OF THE GOVERNOR
STATE OF MONTANA

Steve Bullock
GOVERNOR



Mike Cooney
LT. GOVERNOR

September 27, 2018

Welcome to the 2018 edition of the Montana Agricultural Statistics.

Agriculture continues to be our most important industry in Montana. Agriculture is especially vital to rural Montana, and my administration is working with community and industry leaders across Montana to ensure they have the necessary tools to promote opportunity and enhance resiliency.

Montana's producers lead the nation in pulse production and we're proud to continue our tradition of raising some of the highest quality wheat, barley and beef genetics in the world. We're seeing significant growth in the amount of specialty crops grown in our state, adding to the diversity of our already diverse industry. We're also seeing an increased demand for local foods, and we're working with producers across the state to add value to their products while making them available to consumers here at home.



I want to thank our farmers and ranchers for all the hard work they do year-round to feed the world and ensure our strong tradition of agriculture continues to thrive in Montana. If you have ideas or suggestions for agriculture development or business opportunities, feel free to send me a note on the www.governor.mt.gov website, or give my office a call at (406) 444-3111.

Thanks again and I look forward to hearing from you.

Sincerely,

A blue ink signature of Steve Bullock.

STEVE BULLOCK
Governor

**MESSAGE FROM
THE DIRECTOR**



Agriculture is the backbone of Montana’s economy and the lifeblood of communities all across the state. While our producers face more uncertainty than ever before, they continue to produce some of the highest quality ag products in the world.

Montana continues to be the leading producer of pulse crops, and our wheat remains among the best quality in the world. Beef, barley, sugar beets, seed potatoes, canola and organics continue to be vital pieces of our diverse agriculture industry. We’re entering the second year of our industrial hemp program, and we’ve seen significant growth in those acres across the state. Our producers are also tapping into Montana’s tourism economy, with new and exciting opportunities in agritourism.

At the Montana Department of Agriculture (MDA), we are proud to carry on the tradition of hard work that embodies Montana’s ag industry. The most important part of Montana agriculture is its people, and we work with them every day to promote and protect our #1 industry. Whether it’s through grant funds or direct technical assistance, MDA is working hard on behalf of Montana’s producers and consumers.

If you have an idea, don’t hesitate to contact the department at agr@mt.gov or call (406) 444-3144. Updates to this annual Montana Agricultural Statistics bulletin, produced in cooperation with the National Agricultural Statistics Service, are available electronically at www.nass.usda.gov/mt.

Sincerely,

A handwritten signature in black ink, appearing to read "Ben Thomas".

Ben Thomas, Director, Montana Department of Agriculture

I am proud to introduce the 55th edition of the Montana Agricultural Statistics Bulletin. This publication is a culmination of data collected by USDA’s National Agricultural Statistics Service (NASS) and highlights the 2017 crop and livestock estimates. While this book is filled with interesting historic facts and figures, it also contains the story of Montana Agriculture. Many producers volunteered their time and information to give the most current picture of the health of our agricultural community.

2017 was defined by drought and fire, and the data shows the struggle and impact of those events. The Census of Agriculture was also conducted in 2018 focusing on the 2017 crop year. As NASS continues to analyze this data, we believe the possibility that the results impacting farm polices for the next five years could be immense.

NASS has cooperative agreements with many partners and organizations across the state. Working closely with other federal agencies, the State of Montana, and farm commodity groups allows NASS to produce the best product possible and fulfill our goal of providing timely, accurate, and useful statistics in service to U.S. agriculture.

Thank you to all of Montana’s farmers, ranchers, and agribusinesses that made this publication possible. Thank you to all the producers and commodity groups that I have had the opportunity to meet, work and socialize with throughout the year. I would also like to recognize National Association of State Departments of Agriculture employees across the state and the NASS staff (current and retired) for everything you do to make this publication possible.

A handwritten signature in black ink, appearing to read "Eric Sommer".

Eric Sommer, State Statistician, USDA, NASS, Montana Field Office

**NOTES FROM THE
STATE STATISTICIAN**





Department Mission

"To protect producers and consumers, and to enhance and develop agriculture and allied industries."

Director: Ben Thomas, (406) 444-3144

Deputy Director: Kim Mangold

Central Services Administrator: Cindy Trimp

Chief Legal Counsel: Cort Jensen

Communications Officer: Andy Fjeseth

Executive Assistant: Chelsi Bay

Department Programs & Background

Montana Department of Agriculture operates 30 programs, many funded entirely through user fees. These include regulatory programs that protect producers, consumers and the environment, as well as development and marketing programs to foster growth in Montana agriculture. The Director's Office also serves as an advocate for Montana agriculture in national and international forums, and works to make the department's programs accessible to the public.

Agricultural Development Division

Administrator: Kim Mangold (406) 444-5406

Ag Development & Marketing Bureau

Bureau Chief: Christy Clark (406) 444-2402

- Marketing and Business Assistance
- Grants and Loans
- Agricultural Curriculum Development
- Agricultural Finance
- Agricultural Statistics
- State Hail Insurance
- Commodity Check-off Programs

Wheat & Barley Bureau, Great Falls

Executive Vice President: Collin Watters, (406) 761-7732

- Producer Funded Research & Marketing
- Hosts Foreign Buyers and Delegations

State Grain Laboratory, Great Falls

Bureau Chief: Greg Stordahl, (406) 452-9561

- Federally licensed grain inspection

Marketing Assistance programs assist companies in developing and marketing their products, facilitating nearly \$1,000,000 in trade show sales and \$1,000,000 in sales from export trade activities.

Growth Through Agriculture grants and loans during FY 2017 totaled more than \$725,000 to 25 businesses and individuals for value-added agriculture projects.

State Hail Insurance insured 570,000 acres in 2017. The program insured nearly \$37 million in crop value.

Rural Development finance programs have a combined loan portfolio of more than \$3.6 million.

State Grain Laboratory completed over 37,000 tests for grade, protein, germination, falling numbers and vomitoxin for wheat, barley, canola, dry peas, lentils, garbanzo beans and various other commodities. Pulse Crops account for nearly 7,600 of these tests which has drastically increased in recent years. Both the Great Falls and Plentywood facilities are designated as an official agency of the Federal Grain Inspections Service under USDA Agriculture Marketing Service authorized to completed official inspections for all domestic and foreign exports. Grain Lab staff travel over 180,000 miles annually collecting official samples.

Wheat & Barley Committee annually hosts an average of 13 foreign trade delegations and 60 visitors from seven nations that have an interest in purchasing Montana grains. The Committee represents producers on transportation issues, research, and market development.

Food and Agriculture Development Centers assisted clients with regional food and farm-derived energy projects, helping to introduce new products, start new businesses and assist business expansions.

Agricultural Sciences Division

Administrator: Dr. Mark Nechodom (406) 444-2944

Analytical Laboratory Bureau, Bozeman

Bureau Chief: Jona Verreth, (406) 994-3383
- Provides testing services for feed, fertilizer, pesticide and ground water programs

Commodity Services Bureau

Bureau Chief: Andy Gray (406) 444-0512
- Anhydrous Ammonia
- Feed/Fertilizer
- Grain Warehouses and Auditing
- Organic Certification
- Produce/Seed/Seed Potatoes
- Cooperative Ag. Pest Survey

Agricultural Services Bureau

Bureau Chief: Beth Eiring, (406) 444-9066
- Apiary/Alfalfa Leaf Cutter Bees
- Noxious Weeds
- Noxious Weed Seed Free Forage
- Nursery/Quarantine
- Ground Water
- Pesticide Licensing and Registration
- Pesticide Recycling & Disposal
- Pesticide Compliance
- Driftwatch
- Vertebrate Pests

The Department:

- Licenses about 500 pesticide dealers and registers 11,000 pesticide products.
- Licenses about 5,800 private and 2,000 commercial and government pesticide applicators.
- Certifies 98 commercial honeybee beekeepers and registers 5,586 apiary locations.
- Issues about 1,500 plant health and export certificates annually, enabling products to be shipped to other states and countries.
- Licenses 914 nurseries to assure quality products.
- Issued 3,134 inspection certificates on 291,868,000 pounds of potatoes shipped for seed in 2017.
- Licenses over 1,000 feed manufacturer/distributors and registered over 10,000 pet food products annually.
- Licenses 180 commodity dealer locations and 25 commodity warehouses audited annually.

Analytical Laboratory, operated jointly with MSU at Bozeman, reports about 70,000 individual test results annually on 2,000 feed, fertilizer, soil, plant tissue and water samples.

Pesticide Disposal Program assists homeowners, businesses and producers in disposing of unwanted and unusable pesticides – a total of 586,860 pounds since 1994.

Pesticide Container Recycling Program was created to keep pesticide container plastic out of Montana's landfills. The PCRPP truck will arrive at predetermined collection sites to collect and grind all cleaned and prepared #2 HDPE pesticide plastic. The program has collected approximately 391,419 lbs. since 2009.

Fertilizer Program registered more than 5,000 fertilizer and soil amending products and licensed over 600 businesses in 2017. Reports indicate over 840,000 tons of fertilizer was distributed in Montana during 2016.

Organic Program annually inspects and certified 162 farms and ranches and 55 food handlers as compliant with USDA organic standards. Organic certification allows access to local, national and international value-added markets for organic food products.

Noxious Weed Trust Fund annually distributes more than \$2 million in grants for weed management, research and education from vehicle license fee, federal grants and interest received from the Noxious Weed Trust Fund principal.

Seed Program licenses 491 seed locations that include the following number of licenses: 333 Montana seed dealers, 48 Montana seed labelers, 29 Montana seed growers, 81 seed conditioners, 66 non-resident seed dealers, and 92 non-resident seed labelers.

Montana's Annual & Growing Season Precipitation 2017

DISTRICT	PRECIPITATION IN INCHES													
	MONTHLY												ANNUAL	
	JAN	FEB	MAR	APR	MAY	JUN	JUL	AUG	SEP	OCT	NOV	DEC	TOTAL	DFN
NORTHWEST														
Corvallis.....	0.87	1.28	1.84	0.84	1.20	2.32	0.05	0.77	0.71	0.64	0.99	1.08	12.59	1.24
Deer Lodge.....	0.28	0.39	0.54	0.63	2.06	3.21	0.37	0.09	1.20	0.80	0.83	0.69	11.09	0.47
Hamilton.....	1.18	2.01	1.92	1.36	1.67	3.18	0.20	0.25	0.80	0.73	2.63	2.33	18.26	5.13
Kalispell.....	0.97	2.78	2.71	2.36	0.80	1.48	0.07	0.16	0.52	1.23	1.55	2.37	17.00	0.01
Libby.....	1.03	3.16	2.24	1.77	0.47	0.63	0.00	0.21	0.98	1.82	2.75	2.17	17.23	0.14
Missoula.....	0.98	2.28	2.02	1.36	1.39	2.02	0.00	0.20	1.17	0.59	1.61	1.62	15.24	1.11
Olney.....	1.77	1.59	1.16	1.58	4.38	0.67	1.40	0.46	1.27	5.82	1.60	1.30	23.00	0.26
Polson.....	1.27	1.98	2.99	2.16	0.96	1.16	0.03	0.19	1.04	1.93	2.05	2.06	17.82	2.29
Seeley Lake.....	1.04	5.75	4.22	2.15	1.40	3.32	0.11	0.24	1.09	1.37	6.09	3.58	30.36	10.17
Superior.....	0.98	2.43	5.16	2.16	1.54	0.52	0.02	0.00	0.80	1.87	2.90	2.58	20.96	4.48
Thompson Falls.....	1.24	3.88	4.67	2.25	1.10	0.92	0.05	0.03	0.86	3.11	3.73	2.62	24.46	2.22
Yaak.....	0.89	6.96	4.30	1.46	1.06	0.84	0.00	0.02	0.95	2.04	3.70	2.25	24.47	1.94
NORTH CENTRAL														
Brady.....	1.15	1.01	0.56	2.62	1.13	0.85	0.14	0.01	1.50	0.57	1.11	2.16	12.81	2.63
Chester.....	1.06	0.80	0.47	2.63	2.23	1.75	0.59	0.18	1.73	2.56	0.97	1.89	16.86	5.80
Choteau.....	0.79	0.46	0.86	1.54	2.47	2.15	0.26	0.22	2.03	0.37	0.65	1.20	13.00	2.40
Cut Bank.....	0.60	0.82	0.46	2.18	0.96	2.48	0.01	0.00	0.57	0.50	0.51	0.09	9.18	-1.72
Dunkirk.....	0.32	0.27	0.37	2.33	1.41	2.18	0.73	0.03	0.50	0.66	0.59	1.00	10.39	-1.03
Fort Belknap.....	0.32	0.53	0.20	0.70	1.30	0.92	0.36	0.24	0.78	1.20	0.47	0.58	7.60	-4.01
Fort Benton.....	0.91	0.64	0.35	3.21	1.20	1.63	0.14	0.12	1.13	0.43	0.47	1.29	11.52	-1.68
Goldbutte.....	0.68	0.65	0.37	1.32	1.58	2.81	0.22	0.10	0.53	3.22	0.82	0.85	13.15	-1.02
Havre.....	0.69	0.69	0.15	0.66	0.34	0.68	0.23	0.15	0.97	1.92	0.38	1.22	8.08	-3.12
Loma.....	1.03	0.89	0.53	2.50	1.30	1.90	0.16	0.33	1.38	1.05	0.55	1.42	13.04	0.60
Malta.....	0.46	0.59	0.20	1.19	0.84	0.89	0.93	0.25	0.90	1.87	0.28	1.24	9.64	-3.37
Turner.....	0.22	0.56	0.51	1.07	0.42	0.59	0.59	0.27	0.25	0.62	0.18	1.02	6.30	-5.46
Zortman.....	0.73	1.26	0.66	1.15	1.35	1.27	0.67	0.08	2.19	1.93	0.96	2.08	14.33	-2.85
NORTHEAST														
Brockway.....	0.27	0.39	0.06	0.86	0.02	2.12	0.46	0.14	1.64	0.42	0.00	1.21	7.59	-3.85
Glasgow.....	0.47	0.55	0.49	0.52	0.58	0.14	0.69	0.28	1.12	0.91	0.17	0.72	6.64	-5.02
Glendive.....	0.39	0.50	0.73	0.96	0.75	1.66	1.00	0.37	2.26	0.24	0.25	0.43	9.54	-4.01
Jordan.....	0.56	0.58	0.57	0.51	0.29	0.77	0.30	0.12	1.54	0.72	0.28	0.94	7.18	-5.49
Plentywood.....	0.43	0.66	0.98	0.98	0.40	0.44	0.18	1.64	0.97	0.78	0.38	0.38	8.22	-5.02
Scobey.....	0.10	0.42	0.45	1.13	0.72	0.58	0.22	0.54	0.90	0.31	0.15	0.11	5.63	-6.88
Sidney.....	0.90	0.42	1.05	1.00	1.01	1.68	0.63	2.39	2.68	1.12	0.36	0.79	14.03	-0.29
St. Marie.....	0.10	0.16	0.07	0.15	0.59	0.58	0.55	0.33	0.84	0.49	0.00	0.52	4.38	-7.75
Wolf Point.....	0.11	0.23	0.14	0.88	0.33	0.23	0.10	0.55	1.26	0.47	0.17	0.17	4.64	-7.54
CENTRAL														
Great Falls.....	0.75	0.53	0.35	3.72	2.20	2.45	0.15	0.06	2.46	0.50	0.83	1.03	15.03	0.40
Helena.....	0.62	0.68	0.42	0.72	1.39	1.25	0.19	0.00	1.92	0.44	1.06	1.83	10.52	-0.70
Judith Gap.....	0.24	0.45	1.07	1.23	4.19	1.15	2.11	1.16	2.64	2.64	0.11	1.06	18.05	2.65
Lewistown.....	0.35	0.68	0.43	2.66	1.69	1.75	0.18	0.25	2.62	0.98	0.40	0.62	12.61	-4.24
Roundup.....	0.69	0.46	1.41	2.53	1.00	0.43	0.24	0.15	3.26	0.49	0.64	1.46	12.76	-1.39
Ryegate.....	0.40	0.65	0.96	1.49	0.90	1.73	0.06	0.08	2.21	0.35	0.84	1.52	11.19	-1.64
Stanford.....	0.64	0.46	0.67	2.15	2.57	1.37	0.16	0.52	3.31	0.69	1.09	1.51	15.14	-1.61
Townsend.....	0.24	0.39	0.25	1.93	1.83	1.80	0.58	0.30	1.18	0.27	0.88	0.92	10.57	0.17
White Sulphur Springs.....	0.32	0.43	0.39	1.23	1.51	1.83	0.35	0.20	1.78	0.50	1.25	1.64	11.43	-1.56
SOUTHWEST														
Boulder.....	0.24	0.18	0.39	0.52	1.00	1.68	0.55	0.01	0.82	0.36	1.00	0.66	7.41	-3.96
Bozeman.....	0.74	0.93	1.67	3.29	2.84	2.78	0.27	0.95	2.40	1.50	2.46	2.09	21.92	2.21
Butte.....	0.31	0.48	0.93	2.02	1.59	2.78	0.50	0.16	1.76	0.17	0.74	0.53	11.97	-0.80
Dillon.....	0.06	0.15	0.65	1.88	1.49	1.37	0.65	0.20	2.21	0.16	0.52	0.45	9.79	-0.78
Divide.....	1.70	2.30	1.80	3.70	2.80	3.20	0.40	0.70	2.20	1.80	2.20	1.30	24.10	-0.60
Ennis.....	0.29	0.50	1.31	1.96	1.42	1.63	0.89	0.97	1.34	0.53	1.64	1.18	13.66	0.30
West Yellowstone.....	1.93	4.15	2.91	2.93	0.67	1.37	0.52	1.03	4.55	1.04	5.78	1.97	28.85	6.01
SOUTH CENTRAL														
Billings.....	0.67	0.79	2.24	3.60	1.60	2.08	0.31	0.52	2.60	0.43	1.38	1.84	18.06	3.29
Hardin.....	1.16	0.37	1.89	2.12	1.19	1.04	0.41	0.94	2.83	0.40	1.56	1.27	15.18	3.15
Hysham.....	0.64	0.43	1.24	1.64	0.78	1.82	0.25	0.46	2.26	0.55	0.52	0.89	11.48	-2.13
Livingston.....	0.41	0.91	1.21	2.45	3.23	1.65	0.42	0.68	2.94	0.24	1.47	0.77	16.38	1.57
Melville.....	0.69	1.03	1.63	2.38	3.23	2.78	0.77	0.33	4.23	0.43	2.43	1.35	21.28	3.42
Rapelje.....	0.48	0.74	1.54	1.52	1.93	1.92	0.52	0.47	3.95	0.73	1.51	2.68	17.99	3.54
Red Lodge.....	0.78	0.87	1.61	3.26	3.35	1.70	1.11	0.79	3.60	1.01	1.98	1.72	21.78	-0.48
Yellowtail.....	1.02	1.18	2.51	4.03	1.83	0.39	0.02	0.12	5.32	0.60	2.18	1.41	20.61	3.46
SOUTHEAST														
Baker.....	0.07	0.15	0.60	0.82	1.57	0.56	0.60	0.71	2.97	0.73	0.26	0.02	9.06	-5.56
Broadus.....	0.49	0.16	1.88	2.70	0.93	0.92	1.87	0.36	4.08	0.30	0.48	0.63	14.80	0.83
Colstrip.....	0.70	0.31	1.55	2.28	0.74	1.65	0.18	0.58	2.09	0.72	1.06	2.24	14.10	-0.53
Ekalaka.....	0.32	0.21	1.11	2.20	2.04	0.91	0.76	1.03	3.13	0.41	0.37	0.65	13.14	-3.67
Miles City.....	0.07	0.39	0.57	0.98	0.43	0.74	0.00	0.15	1.81	0.72	0.25	0.22	6.33	-6.11
Terry.....	0.43	0.44	0.41	1.39	0.97	0.72	0.82	0.08	3.44	0.29	0.23	0.82	10.04	-1.94
Wibaux.....	0.11	0.20	0.47	0.79	1.09	0.57	0.69	2.38	2.85	0.68	0.07	0.48	10.38	-4.15

Summary based on NOAA Regional Climate Centers (RCCs) data. DFN = departure from normal. Precipitation (rain or melted snow/ice) in inches. Air temperature in degrees Fahrenheit. Climate normals used are for the 1981-2010 period.

Montana Facts & Figures

Montana Population ¹		Land & Land Utilization ²	
Total, 2010 Census	989,415	Montana Total Land Area, Square Miles	145,522
People Per Square Mile	6.8	Total Land Area, Acres	93,134,579
		All Land in Farms & Ranches, Acres	59,758,917
		Proportion of Land in Farms & Ranches	64.2%

¹ 2010 U.S. Population Census.

² 2012 U.S. Census of Agriculture.

Farms Counts & Measurements

Number of Farms & Ranches ¹	27,100	Real Estate Value/Farm or Ranch ³	\$1,776,943
Average Size of Farm or Ranch	2,207 Acres	Average Value per Acre ⁴	\$920
Total Farm & Ranch Assets ^{2,3}	\$58.4 Billion	Farm & Ranch Debt per Operation ³	\$282,820
Average Value Per Farm or Ranch ³	\$2,153,672		

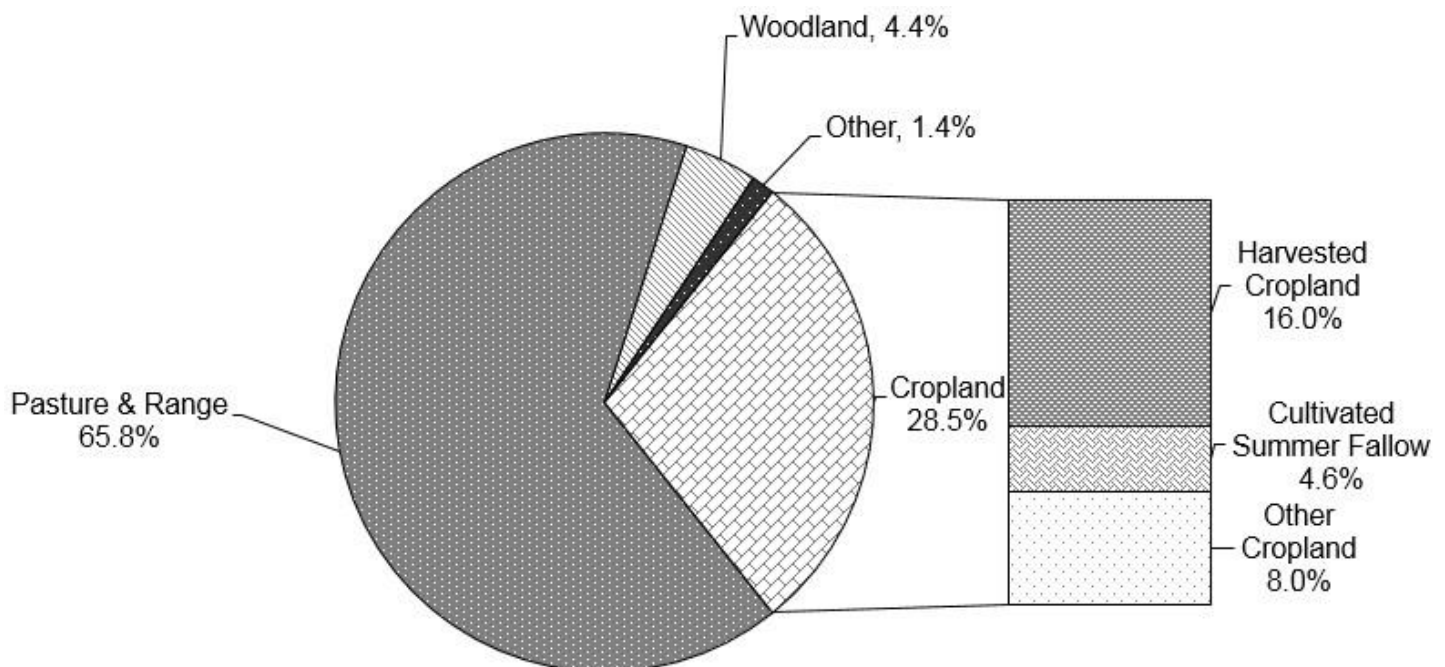
¹ Places with annual sales of agricultural products of \$1,000 or more, 2017 figure.

² Excludes farm operators' household assets and debt.

³ Source: Economic Indicators of the Farm Sector, State Income and Balance Sheet Statistics, USDA–Economic Research Service. Figures are for 2017.

⁴ Per acre, land and buildings, January 1, 2017.

Land in Farms & Ranches:
Utilization as a Percentage of Total



Source: 2012 Census of Agriculture

Number of Farms – Montana: 1910-1949

Year	Number of Farms (1,000)	Year	Number of Farms (1,000)	Year	Number of Farms (1,000)	Year	Number of Farms (1,000)
1910	28.8	1920	57.7	1930	55.0	1940	44.5
1911	31.5	1921	57.0	1931	54.5	1941	42.0
1912	34.0	1922	55.0	1932	54.0	1942	41.0
1913	37.0	1923	52.5	1933	53.5	1943	40.8
1914	40.0	1924	51.0	1934	53.0	1944	40.6
1915	45.0	1925	50.0	1935	52.0	1945	40.4
1916	50.0	1926	51.0	1936	50.0	1946	39.8
1917	54.0	1927	52.5	1937	48.0	1947	39.2
1918	56.0	1928	53.5	1938	46.0	1948	38.5
1919	57.0	1929	54.0	1939	45.0	1949	37.8

Number of Farms, All Land in Farms, & Average Size of Farms – Montana: 1950-2017

Year ¹	Number of Farms (1,000)	All Land in Farms (1,000 Acres)	Average Size of All Farms Acres	Year	Number of Farms (1,000)	All Land in Farms (1,000 Acres)	Average Size of All Farms Acres
1950	37.2	65,000	1,747	1990	24.7	60,500	2,449
1951	36.8	65,200	1,772	1991	24.7	60,300	2,441
1952	36.4	65,500	1,799	1992	24.3	60,000	2,469
1953	35.9	65,800	1,833	1993	25.0	59,900	2,396
1954	35.4	66,100	1,867	1994	26.0	59,600	2,292
1955	34.8	66,100	1,899	1995	26.0	59,400	2,285
1956	34.2	66,200	1,936	1996	26.5	58,500	2,208
1957	33.6	66,300	1,973	1997	27.0	57,800	2,141
1958	33.0	66,500	2,015	1998	27.5	59,000	2,145
1959	32.4	66,600	2,056	1999	27.8	59,200	2,129
1960	31.7	66,700	2,104	2000	27.8	59,300	2,133
1961	30.8	66,800	2,169	2001	27.8	59,600	2,144
1962	30.1	66,800	2,219	2002	27.9	59,800	2,143
1963	29.5	66,800	2,264	2003	28.0	60,300	2,154
1964	28.9	67,200	2,325	2004	28.0	60,400	2,157
1965	28.4	66,700	2,349	2005	28.0	60,600	2,164
1966	28.0	66,200	2,364	2006	28.1	60,800	2,164
1967	27.6	65,700	2,380	2007	29.5	60,900	2,064
1968	27.1	65,200	2,406	2008	29.3	60,600	2,068
1969	26.7	64,700	2,423	2009	29.5	60,500	2,051
1970	26.4	64,200	2,432	2010	29.1	60,600	2,082
1971	26.0	63,700	2,450	2011	28.7	60,700	2,115
1972	25.5	63,200	2,478	2012	28.0	59,800	2,136
1973	25.1	63,000	2,510	2013	28.1	59,700	2,125
1974	24.6	62,800	2,553	2014	27.8	59,700	2,147
1975	23.4	62,200	2,658	2015	27.5	59,700	2,171
1976	23.4	62,200	2,658	2016	27.4	59,700	2,179
1977	23.5	62,100	2,643	2017	27.1	59,800	2,207
1978	23.6	62,100	2,631				
1979	23.7	62,100	2,620				
1980	23.8	61,900	2,601				
1981	23.9	61,700	2,582				
1982	24.0	61,500	2,563				
1983	24.1	61,300	2,544				
1984	24.2	61,100	2,525				
1985	24.3	61,000	2,510				
1986	24.4	60,900	2,496				
1987	24.5	60,800	2,482				
1988	24.6	60,700	2,467				
1989	24.7	60,600	2,453				

¹ Beginning in 1975, number of farms refers to places that had annual sales of agricultural products of \$1,000 or more.

Census of Agriculture: Number of Farms by Size

Acres	1-9	10-49	50-179	180-499	500-999	1,000-1,999	2,000 or More	Total No. of Farms
Year	Number of Farms							
1954.....	1,455	1,893	4,800	5,952	5,553	(1)	13,408	33,061
1959.....	675	1,690	3,804	4,983	4,671	(1)	13,181	28,959
1964.....	704	1,641	3,393	4,396	3,954	5,101	7,831	27,020
1969.....	1,283	1,485	2,791	3,757	3,339	4,700	7,596	24,951
1974.....	1,177	1,550	2,707	3,436	2,990	4,053	7,411	23,324
1978.....	1,255	1,889	2,987	3,420	2,928	4,011	7,075	23,565
1982.....	1,551	2,673	3,080	3,097	2,640	3,345	7,184	23,570
1987.....	1,940	2,745	3,019	3,315	2,737	3,460	7,352	24,568
1992.....	1,209	2,804	3,061	2,964	2,521	3,040	7,222	27,821
1997.....	1,195	4,673	4,414	4,032	3,067	3,382	6,869	27,632
2002.....	1,484	5,005	4,497	3,964	2,770	3,034	7,116	27,870
2007.....	1,917	5,462	4,971	4,464	2,919	2,935	6,856	29,524
2012.....	2,365	5,518	4,478	3,835	2,560	2,771	6,481	28,008

¹ Combined with "2,000 acres or more".

Census of Agriculture: Number of Farms by Value of Sales

Value	Less than \$2,500	\$2,500-\$4,999	\$5,000-\$9,999	\$10,000-\$24,999	\$25,000-\$49,999	\$50,000-\$99,999	\$100,000-\$499,999	\$500,000 or More	Total No. of Farms
Year	Number of Farms								
1954.....	9,6	600	7,760	3,905	2,581	(NA)	(NA)	(NA)	33,061
1959.....	6,4	4,024	6,570	11,691	(NA)	(NA)	(NA)	(NA)	28,959
1964.....	5,8	3,522	6,518	(1)	11,753	(1)	251	(2)	27,020
1969.....	4,5	2,375	3,800	(1)	13,512	(1)	597	49	24,951
1974.....	3,3	1,655	2,520	(1)	13,565	(1)	2,036	106	23,324
1978.....	2,8	1,991	2,538	4,573	4,757	(1)	2,567	160	23,565
1982.....	3,9	1,795	2,295	3,703	3,592	3,928	3,981	263	23,570
1987.....	4,3	2,006	2,374	3,912	3,695	4,064	3,945	252	24,568
1992.....	4,0	1,764	2,131	3,413	3,051	3,528	4,492	369	27,821
1997.....	7,1	2,314	2,559	3,666	3,066	3,425	4,988	485	27,632
2002.....	10,1	1,776	2,162	3,043	2,718	3,027	4,507	520	27,870
2007.....	11,9	1,784	1,934	2,770	2,215	2,464	5,247	1,133	29,524
2012.....	8,0	2,112	2,457	3,038	2,442	2,333	5,268	2,266	28,008

(NA) Not available.

¹ Combined with "\$25,000-\$49,999".

² Combined with "\$100,000-\$499,999".

Census of Agriculture: Number of Farms Reporting Cropland

Year	Farms Reporting Cropland	Acres of Cropland	Cropland Acres Average Per Farm
1954.....	31,218	14,508,389	465
1959.....	27,486	15,077,067	549
1964.....	25,212	15,388,431	610
1969.....	22,709	16,108,575	709
1974.....	21,368	15,445,720	723
1978.....	21,437	16,232,608	757
1982.....	20,717	16,452,331	794
1987.....	21,064	17,829,766	846
1992.....	19,442	17,494,553	900
1997.....	22,803	18,238,158	800
2002.....	21,854	18,315,514	838
2007.....	29,524	18,241,710	836
2012.....	28,008	17,022,177	608

Farms: Acres by Economic Sales Class – Montana: 2008-2017

Year	\$1000- \$9,999	\$10,000- \$99,999	\$100,000- \$249,999	\$250,000- \$499,999	\$500,000- 999,999 ¹	\$1,000,000 & Over ²	Total
	(1,000 Acres)	(1,000 Acres)	(1,000 Acres)	(1,000 Acres)	(1,000 Acres)	(1,000 Acres)	(1,000 Acres)
2008	2,900	11,700	14,800	14,100	17,100	(2)	60,600
2009	3,300	11,400	14,300	13,800	17,700	(2)	60,500
2010	3,500	10,900	13,100	12,700	20,400	(2)	60,600
2011	4,200	10,400	12,300	13,300	20,500	(2)	60,700
2012	3,100	9,300	9,900	12,400	25,100	(2)	59,800
2013	3,100	9,100	10,000	12,300	13,000	12,200	59,700
2014	2,900	9,100	9,800	12,200	13,500	12,200	59,700
2015	2,800	8,800	9,700	12,200	13,600	12,600	59,700
2016	2,700	8,900	9,800	12,300	13,500	12,500	59,700
2017	2,800	8,800	9,800	12,200	13,500	12,700	59,800

¹ \$500,000 & over before 2013 & \$500,000 - \$999,999 2013 & later.

² \$1,000,000 & over economic sales class not published before 2013.

Farms: Number of Farms, Land in Farms, & Average Size – Montana & U.S. 2008-2017

	Montana			United States		
	Farms ¹	Land in Farms	Average Size	Farms ¹	Land in Farms	Average Size
	(Number)	(1,000 Acres)	(Acres)	(Number)	(1,000 Acres)	(Acres)
2008	29,300	60,600	2,068	2,184,500	918,600	421
2009	29,500	60,500	2,051	2,169,660	917,590	423
2010	29,100	60,600	2,082	2,149,520	915,660	426
2011	28,700	60,700	2,115	2,131,240	914,420	429
2012	28,000	59,800	2,136	2,109,810	914,600	433
2013	28,100	59,700	2,125	2,102,010	914,030	435
2014	27,800	59,700	2,147	2,085,000	913,000	438
2015	27,500	59,700	2,171	2,068,000	912,000	441
2016	27,400	59,700	2,179	2,060,000	911,000	442
2017	27,100	59,800	2,207	2,048,000	910,000	444

¹ Annual sales of agricultural products of \$1,000 or more.

Farm Real Estate: Average Value per Acre by Type of Land – Montana & United States: 2008-2017

Year	Montana					United States		
	All Land	All Cropland	Irrigated Cropland	Non-Irrigated Cropland	Pasture	All Land	All Cropland	Pasture
	(Dollars/Acre)	(Dollars/Acre)	(Dollars/Acre)	(Dollars/Acre)	(Dollars/Acre)	(Dollars/Acre)	(Dollars/Acre)	(Dollars/Acre)
2008	900	811	3,300	580	760	2,170	2,760	1,090
2009	700	788	2,800	600	530	2,090	2,640	1,060
2010	700	779	2,690	600	530	2,150	2,700	1,060
2011	710	806	2,690	630	530	2,300	2,980	1,070
2012	760	852	2,690	680	570	2,520	3,350	1,110
2013	790	890	2,780	710	580	2,730	3,810	1,170
2014	860	987	2,950	800	640	2,950	4,100	1,300
2015	890	997	2,960	810	650	3,020	4,130	1,330
2016	900	1,010	2,980	820	650	3,010	4,090	1,330
2017	920	1,020	2,980	830	660	3,080	4,090	1,350

**Census of Agriculture: Number of Farms, Land in Farms, & Average Farms Size, by County
– Montana: 2007 & 2012**

County & District	2007			2012		
	Number of Farms	Land in Farms	Average Size of Farms	Number of Farms	Land in Farms	Average Size of Farms
		(Acres)	(Acres)		(Acres)	(Acres)
Deer Lodge	123	79,335	645	93	66,577	716
Flathead	1,094	251,597	230	1,035	169,898	164
Granite	166	302,973	1,825	163	285,419	1,751
Lake	1,280	637,306	498	1,156	555,766	481
Lincoln	350	51,885	148	325	47,284	145
Mineral	99	22,654	229	95	17,049	179
Missoula	699	281,893	403	637	247,141	388
Powell	273	670,354	2,456	263	589,239	2,240
Ravalli	1,532	262,872	172	1,438	234,782	163
Sanders	508	341,913	673	492	338,725	688
Northwest						
Blaine	655	2,330,605	3,558	546	2,204,248	4,037
Chouteau	849	2,277,842	2,683	774	2,071,771	2,677
Glacier	625	1,700,179	2,720	602	1,570,323	2,609
Hill	854	1,697,232	1,987	802	1,597,982	1,992
Liberty	299	904,327	3,025	304	897,946	2,954
Phillips	556	2,006,068	3,608	507	2,066,540	4,076
Pondera	542	944,486	1,743	505	956,635	1,894
Teton	770	1,152,691	1,497	742	975,173	1,314
Toole	428	1,115,019	2,605	423	1,128,523	2,668
North Central						
Daniels	397	860,238	2,167	338	768,240	2,273
Dawson	535	1,378,564	2,577	485	1,258,119	2,594
Garfield	288	2,391,958	8,305	297	2,190,715	7,376
McCone	489	1,506,824	3,081	489	1,371,908	2,806
Richland	548	1,279,300	2,334	544	1,293,012	2,377
Roosevelt	728	1,451,828	1,994	606	1,239,688	2,046
Sheridan	602	1,065,503	1,770	527	1,041,794	1,977
Valley	770	2,061,260	2,677	654	1,634,642	2,499
Northeast						
Broadwater	302	474,892	1,572	287	476,797	1,661
Cascade	1,112	1,379,645	1,241	1,105	1,254,745	1,136
Fergus	898	2,446,047	2,724	790	1,961,057	2,482
Golden Valley	153	671,764	4,391	157	708,186	4,511
Judith Basin	306	838,477	2,740	324	1,034,416	3,193
Lewis & Clark	675	971,240	1,439	703	843,160	1,199
Meagher	138	812,412	5,887	136	812,325	5,973
Musselshell	373	1,133,030	3,038	356	1,017,953	2,859
Petroleum	103	640,707	6,220	100	689,752	6,898
Wheatland	137	822,253	6,002	154	873,959	5,675
Central						
Beaverhead	431	1,239,068	2,875	430	1,380,888	3,211
Gallatin	1,071	776,868	725	1,163	702,713	604
Jefferson	370	391,248	1,057	401	371,205	926
Madison	585	1,060,883	1,813	571	1,085,291	1,901
Silver Bow	175	101,081	578	140	69,740	498
Southwest						
Big Horn	695	2,899,620	4,172	527	3,148,871	5,975
Carbon	715	793,628	1,110	726	791,295	1,090
Park	535	762,753	1,426	564	774,057	1,372
Stillwater	635	857,474	1,350	593	809,443	1,365
Sweet Grass	355	812,759	2,289	332	855,709	2,577
Treasure	101	461,790	4,572	109	617,635	5,666
Yellowstone	1,407	1,615,769	1,148	1,330	1,668,346	1,254
South Central						
Carter	308	1,698,363	5,514	327	1,778,011	5,437
Custer	411	2,127,013	5,175	423	2,189,930	5,177
Fallon	296	978,818	3,307	295	979,692	3,321
Powder River	319	1,620,068	5,079	328	1,588,599	4,843
Prairie	173	767,508	4,436	186	769,046	4,135
Rosebud	478	2,714,024	5,678	437	3,141,524	7,189
Wibaux	208	492,554	2,368	172	545,433	3,171
Southeast						
Montana	29,524	61,388,462	2,079	28,008	59,758,917	2,134

Agriculture Remains Montana's Number One Industry in 2017

A comparison of selected Montana industries shows Agriculture continues to outpace all other industry sectors, although most all sectors saw an increase in activity, agriculture decreased in 2017. The 2017 value of crop production decreased to \$1.48 billion, a decrease of \$501.6 million or 25 percent below 2016. The value of livestock decreased in 2017 to \$1.5 billion, down \$34.4 million from 2016.

When comparing major industrial sectors in Montana, receipts were down compared to a year ago. Agriculture showed a 6.8 percent decrease, down \$293.2 million from 2016. Mining showed a 19.7 percent increase, up \$241.8 million from the previous year. Gas & Oil showed an increase of 16.6 percent, up \$145.5 million from 2016. Non-residential Travel showed an increase of 11.5 percent in 2017, up \$349.1 million from 2016. Wood and Paper Products also saw an increase from 2016, and was up 1 percent or \$6 million.

Selected Montana Industries Comparison

Industry	2015	2016		2017	2017/2016 Percent
		Million Dollars			
Agriculture ¹	4,735.8	4,323.1	4,029.9	93.2	
Mining ²	1,352.1	1,224.8	1,466.6	119.7	
Gas & Oil ²	1,239.1	872.4	1,017.9	116.6	
Travel ³	3,100.1	3,015.7	3,364.8	111.5	
Wood & Paper Products ⁴	589.0	563.0	569.0	101.0	

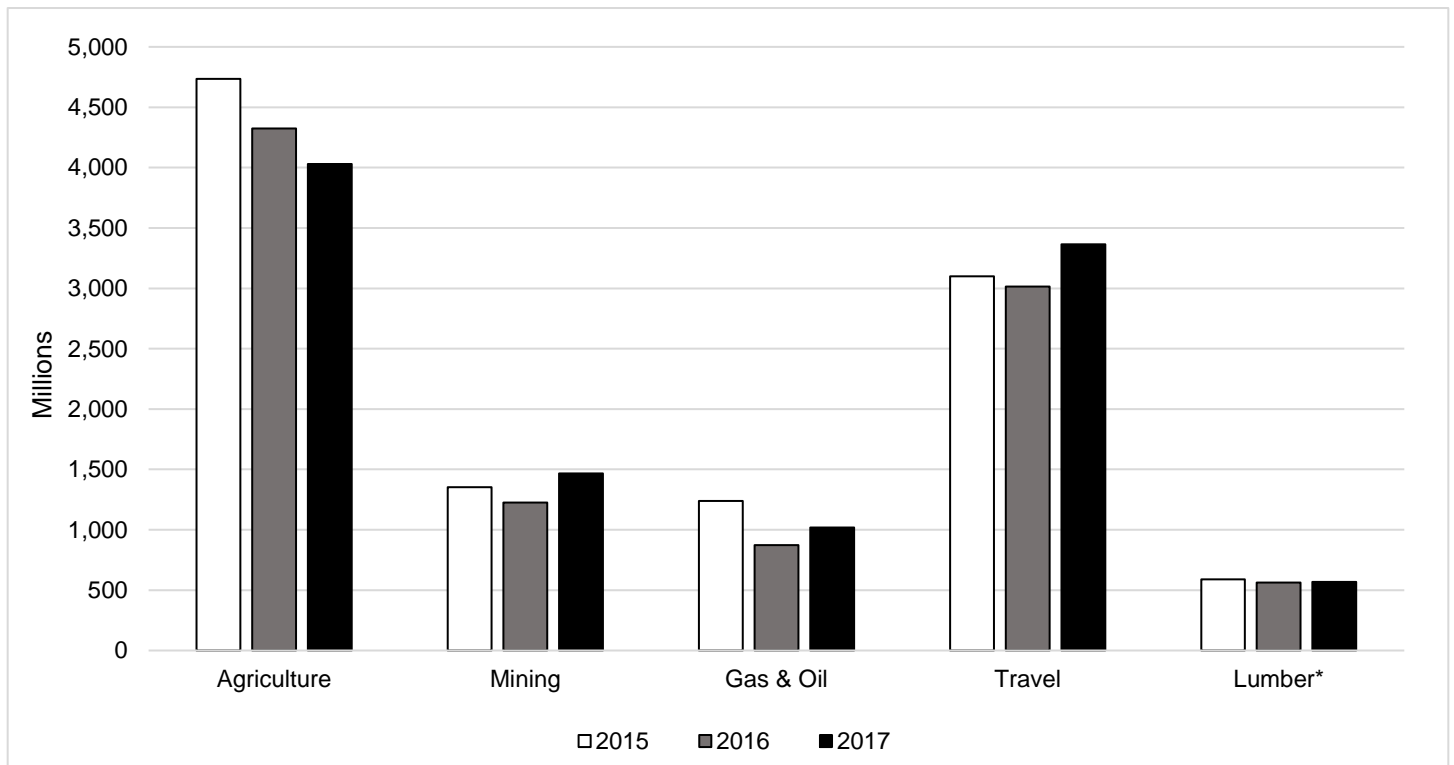
¹ Value of agricultural sector production.

² Gross value, Montana Department of Revenue.

³ Non-resident Direct Economic Impact, Institute for Tourism and Recreation Research, The University of Montana.

⁴ Bureau of Business and Economic Research, The University of Montana.

Montana Selected Industries Comparison 2015-2017



* Wood & Paper Products

Value Added to the U.S. Economy by the Agricultural Sector – Montana: 2013-2017

Montana	2013	2014	2015	2016	2017
	\$1,000	\$1,000	\$1,000	\$1,000	\$1,000
Value of Crop Production	2,569,921	2,204,173	1,826,410	1,988,852	1,487,167
Crop Cash Receipts	2,360,222	2,356,489	1,887,960	2,038,325	1,804,675
Feed Crops	713,182	662,825	574,513	531,702	565,034
Food Grains	1,284,477	1,331,875	910,915	918,994	795,402
Fruits & Nuts	3,702	3,991	1,769	NA	NA
Oil crops	32,256	37,122	31,174	30,062	35,518
Vegetables & Melons	188,814	193,961	221,489	407,547	271,729
All Other Crops	137,791	126,716	148,099	150,019	136,993
Home Consumption	4,169	5,287	1,577	1,636	2,827
Inventory Adjustment	205,531	-157,602	-63,127	-51,109	-320,334
Value of Animals & Products Production	1,692,157	2,168,011	2,152,534	1,622,704	1,588,241
Animals & Products Cash Receipts	1,764,065	2,251,570	1,869,607	1,617,868	1,709,810
Dairy Products, Milk	54,791	65,120	43,806	45,820	49,525
Meat Animals	1,586,552	2,062,542	1,699,046	1,461,379	1,546,060
Miscellaneous Livestock	102,283	100,503	93,037	91,338	93,979
Poultry & Eggs	20,439	23,405	33,718	19,331	20,246
Home Consumption	5,018	5,228	6,313	5,219	5,022
Inventory Adjustment	-76,925	-88,788	276,614	-383	-126,591
Farm-related Income	805,926	728,947	756,909	711,564	954,576
Forest Products Sold	1,083	2,080	1,937	3,146	2,297
Gross Imputed Rental Value of Farm Dwellings	429,967	355,806	396,302	368,923	431,023
Machine Hire & Custom Work	70,574	55,113	60,983	44,932	36,695
Other Farm Income	304,302	315,948	297,686	294,563	484,560
Total Commodity Insurance Indemnities	127,764	86,954	154,471	115,667	271,314
Federal Commodity Insurance Indemnities	116,093	74,576	129,204	75,962	235,764
Net Cash Rent Received by Operator Landlords ¹	15,837	12,648	18,593	15,913	18,444
Value of Agricultural Sector Production	5,068,004	5,101,131	4,735,853	4,323,121	4,029,984
Intermediate Product Expenses ²	2,323,296	2,542,724	2,183,957	2,000,340	2,258,567
Farm Origin	601,057	709,496	605,318	470,193	533,115
Feed Purchases	318,367	374,446	320,578	259,226	285,756
Livestock & Poultry Purchases	139,010	202,723	193,211	106,666	121,772
Seed Purchases	143,680	132,327	91,530	104,301	125,587
Manufactured Inputs	926,225	938,146	823,071	758,385	847,014
Electricity	73,008	69,318	75,929	58,140	83,152
Fertilizer, Lime, & Soil Conditioners	382,314	374,424	364,668	313,693	339,181
Pesticides	187,683	215,265	189,617	201,227	207,031
Fuel & Oils	283,221	279,138	192,856	185,326	217,649
Other Intermediate Expenses ²	796,014	895,082	755,567	771,762	878,438
Machine Hire & Custom Work	56,517	61,489	40,405	51,001	60,046
Marketing, Storage, & Transportation	72,387	103,593	82,158	99,253	103,832
Repair & Maintenance ²	256,618	283,364	251,779	219,502	279,436
Miscellaneous Expenses ²	410,492	446,637	381,226	402,006	435,123
Total Insurance Premiums ³	165,575	156,844	129,940	129,786	146,105
Federal Commodity Insurance Premiums	79,648	57,888	57,747	55,042	63,525
Irrigation	24,421	27,822	29,845	29,325	28,039
Contract Labor	33,908	54,512	29,447	45,210	43,626
Net Government Transactions	70,516	-92,047	-92,400	28,169	169,132
Direct Government Payments	250,350	158,925	131,273	235,107	374,556
Property Taxes & Fees ²	179,834	250,972	223,672	206,938	205,425
Motor Vehicle Registration & Licensing Fees	16,087	15,667	14,140	14,687	15,334
Gross Value Added	2,781,317	2,411,847	2,430,049	2,305,739	1,896,922
Capital Consumption ²	693,750	927,492	722,262	797,296	630,155
Net Value Added	2,087,566	1,484,355	1,707,788	1,508,444	1,266,767
Factor Payments to Stakeholders ⁴	847,040	808,830	762,920	800,140	900,498
Hired Labor & Non-Cash Employee Compensation	296,112	285,163	239,760	275,345	298,933
Net Rent Paid to Operator Landlords	27,475	32,207	30,640	28,562	35,493
Net Rent Paid to Non-Operator Landlords	259,341	212,173	201,854	188,164	233,819
Total Interest Expenses ²	264,111	279,287	290,665	308,068	332,253
Net farm Income	1,240,527	675,525	944,867	708,304	366,269

Data as of August 30, 2018 NA = Data are not available/applicable. Values are rounded to the nearest thousand.

¹ Share rent income is included in cash receipts.

² Includes expenses associated with operator dwellings.

³ Includes federal and private crop and livestock insurance premiums as well as casualty, hail, motor vehicle and all other insurance premiums.

⁴ Prior to 2008 estimates, factor payments to stakeholders only includes net rent paid to non-operator landlords.

Farm Income & Expenses by Counties & Districts – Montana: 2016

County & District	Cash Receipts		Other Farm Income (1,000 Dollars)	Government Payments (1,000 Dollars)	Production Expenses (1,000 Dollars)	Gross Farm Income (1,000 Dollars)	Realized Net Farm Income (1,000 Dollars)
	Livestock & Products	Crops (1,000 Dollars)					
Deer Lodge	3,191	2,105	485	356	6,128	5,781	-347
Flathead	6,243	34,844	5,994	1,050	46,985	47,081	96
Granite	14,057	3,698	1,824	625	18,269	19,579	1,310
Lake	27,624	53,567	7,702	1,602	76,859	88,893	12,034
Lincoln.....	2,137	1,844	3,146	305	10,367	7,127	-3,240
Mineral	706	245	246	87	1,847	1,197	-650
Missoula.....	8,365	5,803	10,697	361	34,920	24,865	-10,055
Powell	23,320	8,203	3,126	1,333	37,851	34,649	-3,202
Ravalli	21,795	14,033	3,517	335	56,169	39,345	-16,824
Sanders	7,644	7,088	2,124	757	19,462	16,856	-2,606
NORTHWEST.....	115,082	131,430	38,861	6,811	308,857	285,373	-23,484
Blaine	36,732	58,604	17,418	7,211	105,224	112,754	7,530
Chouteau.....	24,191	114,218	32,760	18,196	179,453	171,169	-8,284
Glacier.....	36,646	55,034	20,466	7,770	98,375	112,146	13,771
Hill	22,784	117,962	30,032	18,804	149,777	170,778	21,001
Liberty	15,846	65,730	15,702	11,293	81,218	97,278	16,060
Phillips.....	32,768	45,708	12,425	6,696	88,485	90,901	2,416
Pondera	28,210	68,404	18,826	9,528	114,540	115,440	900
Teton.....	53,082	72,353	17,708	8,545	138,195	143,143	4,948
Toole.....	21,476	68,148	21,068	10,775	94,853	110,692	15,839
NORTH CENTRAL.....	271,735	666,161	186,405	98,818	1,050,120	1,124,301	74,181
Daniels	8,028	53,385	13,026	8,047	86,112	74,439	-11,673
Dawson	21,526	34,186	14,779	10,016	84,350	70,491	-13,859
Garfield	47,410	23,645	9,850	4,679	66,633	80,905	14,272
McCone.....	21,752	64,525	11,173	6,599	98,782	97,450	-1,332
Richland.....	39,305	89,668	12,005	6,208	136,377	140,978	4,601
Roosevelt.....	11,542	79,689	15,274	7,845	114,925	106,505	-8,420
Sheridan.....	13,201	90,238	13,410	8,141	96,897	116,849	19,952
Valley	28,408	80,053	16,812	8,496	130,280	125,273	-5,007
NORTHEAST.....	191,172	515,389	106,329	60,031	814,356	812,890	-1,466
Broadwater.....	15,121	23,112	6,737	2,374	46,221	44,970	-1,251
Cascade.....	53,652	44,565	11,540	5,785	114,429	109,757	-4,672
Fergus.....	64,243	64,550	18,417	5,905	143,176	147,210	4,034
Golden Valley.....	11,982	7,754	3,433	2,344	26,199	23,169	-3,030
Judith Basin.....	67,030	27,443	8,096	1,993	70,359	102,569	32,210
Lewis & Clark.....	25,850	32,699	5,437	1,228	54,680	63,986	9,306
Meagher.....	26,201	8,873	1,689	498	32,629	36,763	4,134
Musselshell.....	24,382	9,037	4,131	1,966	43,033	37,550	-5,483
Petroleum.....	20,185	10,524	2,937	678	26,740	33,646	6,906
Wheatland.....	36,902	9,448	5,429	2,409	45,095	51,779	6,684
CENTRAL.....	345,548	238,005	67,846	25,180	602,561	651,399	48,838
Beaverhead.....	106,796	48,950	7,363	2,412	132,914	163,109	30,195
Gallatin.....	41,451	140,621	10,792	2,982	124,214	192,864	68,650
Jefferson	15,634	4,976	1,851	802	21,786	22,461	675
Madison	46,060	39,233	6,153	680	87,002	91,446	4,444
Silver Bow.....	2,909	870	596	104	4,600	4,375	-225
SOUTHWEST.....	212,850	234,650	26,755	6,980	370,516	474,255	103,739
Big Horn	48,881	42,533	11,062	3,832	106,732	102,476	-4,256
Carbon	44,559	20,087	5,185	1,358	85,868	69,831	-16,037
Park.....	22,103	13,748	9,012	453	50,834	44,863	-5,971
Stillwater.....	38,254	11,540	9,810	3,194	59,588	59,604	(L)
Sweet Grass.....	25,383	4,685	2,653	509	48,498	32,721	-15,777
Treasure	25,111	18,880	2,954	762	38,793	46,945	8,152
Yellowstone.....	141,417	54,364	12,487	4,392	201,494	208,268	6,774
SOUTH CENTRAL.....	345,708	165,837	53,163	14,500	591,807	564,708	-27,115
Carter	72,748	12,124	14,248	6,107	76,579	99,120	22,541
Custer	87,566	17,559	7,863	3,863	111,331	112,988	1,657
Fallon	38,409	13,722	7,335	2,415	59,652	59,466	-186
Powder River.....	56,176	7,047	7,356	3,066	64,215	70,579	6,364
Prairie.....	14,300	11,390	4,247	2,437	32,698	29,937	-2,761
Rosebud.....	57,267	21,962	8,054	4,029	97,693	87,283	-10,410
Wibaux.....	11,598	15,582	2,448	870	29,735	29,628	-107
SOUTHEAST.....	338,064	99,386	51,551	22,787	471,903	489,001	17,098
MONTANA.....	1,820,159	2,050,858	530,910	235,107	4,210,120	4,401,927	191,807

(L) Less than \$50,000, but the estimates for this item are included in the totals.

Note-- All dollar estimates are in current dollars (not adjusted for inflation)

SOURCE: Bureau of Economic Analysis, U.S. Department of Commerce, Washington, D.C.

Cash Rent: Dollars per Acre by Counties & Districts – Montana: 2013-2014

County & Districts ¹	Irrigated		Non-Irrigated		Pasture	
	2013	2014	2013	2014	2013	2014
	(Dollars/Acre)	(Dollars/Acre)	(Dollars/Acre)	(Dollars/Acre)	(Dollars/Acre)	(Dollars/Acre)
Deer Lodge	-	-	-	-	-	-
Flathead	-	-	36.50	36.50	8.50	-
Granite	71.00	68.00	-	-	-	-
Lake	62.50	60.00	-	30.00	9.50	9.70
Lincoln	-	-	-	-	-	-
Mineral	-	-	-	-	-	-
Missoula	34.00	34.50	-	18.50	12.00	14.00
Powell	57.00	56.00	-	-	-	-
Ravalli	57.00	58.50	-	-	26.50	21.00
Sanders	47.00	48.00	16.00	14.00	5.10	5.00
Other	54.00	51.50	25.00	25.00	4.70	5.90
Northwest	57.50	57.50	27.50	29.00	7.50	7.80
Blaine	32.00	34.00	-	22.00	3.60	3.70
Chouteau	86.50	-	29.50	30.50	6.20	7.20
Glacier	28.50	31.00	23.50	23.00	4.30	4.70
Hill	-	-	21.50	28.50	5.50	5.60
Liberty	-	-	19.00	20.00	7.90	-
Phillips	-	35.50	-	25.00	6.00	5.00
Pondera	71.00	68.50	33.00	34.50	10.00	-
Teton	84.50	85.00	27.50	34.50	-	9.60
Toole	-	-	25.50	27.00	-	-
Other	40.00	73.00	20.00	-	9.40	7.30
North Central	64.00	64.00	24.50	27.00	6.30	5.80
Daniels	-	-	-	24.00	5.50	-
Dawson	108.00	108.00	24.00	26.00	5.10	4.80
Garfield	-	-	14.50	-	-	5.20
McCone	-	-	20.00	21.50	6.50	6.60
Richland	133.00	127.00	-	-	5.10	6.70
Roosevelt	-	-	24.50	25.00	4.90	4.70
Sheridan	-	-	28.50	32.50	-	4.40
Valley	-	-	22.50	22.50	5.60	-
Other	53.00	46.00	22.00	21.50	5.10	5.60
Northeast	94.00	94.00	24.00	26.00	5.20	5.30
Broadwater	-	-	24.50	-	-	5.00
Cascade	70.50	70.50	-	25.50	8.00	8.30
Fergus	92.00	-	25.00	24.50	9.10	9.70
Golden Valley	-	-	-	-	6.00	4.00
Judith Basin	-	-	28.50	27.00	9.30	8.00
Lewis & Clark	-	-	-	18.50	-	9.00
Meagher	-	38.00	-	21.50	6.00	6.50
Musselshell	67.50	-	-	-	4.40	4.00
Petroleum	-	-	19.00	-	4.30	4.00
Wheatland	-	-	-	14.00	-	5.00
Other	102.00	94.50	24.50	18.50	7.90	-
Central	95.50	81.00	25.00	24.50	7.30	6.90
Beaverhead	91.00	90.00	-	-	10.00	9.80
Gallatin	121.00	93.50	-	-	11.50	10.50
Jefferson	-	-	-	-	5.50	5.00
Madison	99.00	90.50	-	-	-	10.00
Silver Bow	-	-	-	-	-	9.90
Other	81.00	49.50	25.50	25.50	9.90	-
Southwest	102.00	89.50	25.50	25.50	9.30	8.70
Big Horn	80.50	79.00	17.50	17.50	5.20	4.00
Carbon	-	96.50	-	-	8.60	7.20
Park	41.00	47.50	17.00	18.50	8.60	7.90
Stillwater	-	-	-	21.00	-	5.20
Sweet Grass	-	-	-	-	4.90	5.00
Treasure	122.00	133.00	19.00	20.50	4.30	4.00
Yellowstone	118.00	115.00	23.00	20.50	-	4.00
Other	96.00	78.50	17.50	20.50	5.30	-
South Central	96.00	96.00	18.00	18.50	5.80	4.70
Carter	-	-	15.50	19.00	5.00	-
Custer	71.50	-	14.50	-	4.90	4.10
Fallon	-	-	15.50	19.00	5.80	6.20
Powder River	-	-	-	-	4.50	4.20
Prairie	-	-	-	-	-	5.50
Rosebud	-	-	-	14.50	3.50	-
Wibaux	-	-	-	24.00	-	-
Other	87.50	85.00	22.50	21.00	5.50	4.00
Southeast	84.50	85.00	18.00	20.00	4.70	4.30
Montana	86.00	81.00	23.50	25.50	6.00	5.60

- Represents zero.

¹ Counties with no acres planted or counties that are combined into "Other" counties/districts to avoid disclosure of individual information.

Cash Rent: Dollars per Acre by Counties & Districts – Montana: 2016-2017

County & Districts ¹	Irrigated Cropland		Non-Irrigated Cropland		Pasture	
	2016	2017	2016	2017	2016	2017
	(Dollars/Acre)	(Dollars/Acre)	(Dollars/Acre)	(Dollars/Acre)	(Dollars/Acre)	(Dollars/Acre)
Deer Lodge	-	-	-	-	-	13.50
Flathead	50.00	49.00	35.50	34.00	-	-
Granite	77.50	69.00	-	-	6.20	-
Lake	60.00	60.00	26.50	27.00	10.00	7.00
Lincoln	-	-	-	-	-	-
Mineral	-	-	-	-	-	-
Missoula	48.00	45.00	14.00	13.00	12.50	17.00
Powell	51.50	58.00	18.00	-	5.10	4.10
Ravalli	62.00	62.00	-	16.50	25.50	14.50
Sanders	-	-	20.50	17.50	5.60	4.30
Other	39.00	48.50	18.50	16.50	12.50	6.40
Northwest	58.50	59.00	27.50	24.50	8.80	8.40
Blaine	40.50	44.00	21.00	23.50	5.20	8.20
Chouteau	83.00	74.00	31.00	28.50	7.30	6.50
Glacier	30.50	30.50	22.00	21.00	4.70	5.60
Hill	-	-	28.50	24.50	9.50	7.10
Liberty	-	-	25.00	26.00	7.60	7.60
Phillips	35.50	35.50	23.00	22.50	4.90	5.90
Pondera	63.00	55.00	35.50	36.50	7.90	10.50
Teton	88.00	84.50	35.50	33.50	9.50	6.80
Toole	-	-	29.00	29.50	6.20	5.30
Other	44.00	57.50	-	-	-	-
North Central	61.50	62.00	27.50	27.00	5.80	6.60
Daniels	-	-	28.00	26.50	6.60	6.40
Dawson	99.50	102.00	24.50	25.50	5.50	3.40
Garfield	-	-	15.50	13.50	9.00	5.40
McCone	-	49.50	22.50	22.00	9.30	9.00
Richland	124.00	121.00	23.50	23.50	6.60	5.60
Roosevelt	-	-	27.50	26.50	5.60	4.20
Sheridan	-	-	32.50	33.00	5.40	6.80
Valley	43.00	41.50	25.50	26.50	5.50	5.00
Other	50.50	55.50	-	-	-	-
Northeast	81.00	66.50	27.00	27.50	6.90	5.40
Broadwater	116.00	120.00	19.00	-	4.60	7.70
Cascade	65.00	68.00	27.50	32.00	10.00	8.30
Fergus	-	65.00	26.50	23.00	11.00	12.50
Golden Valley	-	-	19.00	-	-	5.10
Judith Basin	-	-	27.50	29.00	10.50	12.50
Lewis & Clark	79.50	89.00	42.50	34.00	7.10	7.00
Meagher	-	-	-	-	6.00	8.60
Musselshell	-	-	14.00	13.00	4.50	4.50
Petroleum	-	-	-	18.50	-	8.00
Wheatland	-	42.50	14.00	12.50	6.80	7.90
Other	63.50	36.50	18.00	19.00	6.20	-
Central	83.00	76.50	25.50	23.50	7.30	7.80
Beaverhead	92.50	94.00	15.00	-	12.50	10.50
Gallatin	95.50	105.00	38.00	37.50	12.50	10.50
Jefferson	41.50	-	12.00	-	10.50	4.70
Madison	80.00	85.50	-	-	9.40	10.00
Silver Bow	73.00	-	-	-	11.50	9.00
Other	-	50.50	27.50	32.50	-	-
Southwest	90.00	92.50	30.50	34.50	11.00	8.00
Big Horn	80.00	83.50	20.00	23.00	5.20	5.80
Carbon	96.00	86.00	15.50	20.00	8.00	8.60
Park	60.00	58.00	17.50	20.00	7.40	8.60
Stillwater	60.50	57.00	19.50	17.50	7.70	5.40
Sweet Grass	56.50	50.00	16.50	14.00	8.70	4.80
Treasure	121.00	120.00	21.00	24.50	3.70	4.00
Yellowstone	103.00	104.00	21.00	22.00	5.80	5.90
Other	-	-	-	-	-	-
South Central	94.50	90.00	19.50	21.00	6.00	5.90
Carter	-	-	-	20.00	7.10	5.00
Custer	76.00	78.00	-	17.50	4.50	4.10
Fallon	-	-	18.50	17.50	6.90	9.10
Powder River	-	-	-	16.00	6.70	5.00
Prairie	-	93.50	25.50	21.50	8.50	5.40
Rosebud	94.50	96.50	17.00	14.00	3.90	4.40
Wibaux	-	-	24.00	24.00	7.50	8.50
Other	95.00	-	19.00	-	-	-
Southeast	88.00	90.00	20.00	18.50	5.70	5.40
Montana	78.00	75.00	26.50	26.00	6.60	6.30

- Represents zero.

¹ Counties with no acres planted or counties that are combined into "Other" counties/districts to avoid disclosure of individual information.

Farm Real Estate Values, Annual Cash Rent per Acre, & Rent to Value – Montana: 2009-2018

Year	Land Value					Annual Cash Rent			Rent to Value ¹		
	All	Cropland			Pasture	Cropland		Pasture	Cropland		Pasture
		All	Non-Irrigated	Irrigated		Non-Irrigated	Irrigated		Non-Irrigated	Irrigated	
	Dollars/Acre					Dollars/Acre					
2009	700	788	600	2,800	530	21.50	69.00	4.70	3.6	2.5	0.9
2010	700	779	600	2,690	530	22.00	85.00	4.80	3.7	3.2	0.9
2011	710	806	630	2,690	530	23.50	72.00	5.60	3.7	2.7	1.1
2012	760	852	680	2,690	570	23.00	80.00	5.90	3.4	3.0	1.0
2013	790	890	710	2,780	580	23.50	86.00	6.00	3.3	3.1	1.0
2014	860	987	800	2,950	640	25.50	81.00	5.60	3.2	2.7	0.9
2015	890	997	810	2,960	650	26.00	83.00	5.80	3.2	2.8	0.9
2016	900	1,010	820	2,980	650	26.50	78.00	6.60	3.2	2.6	1.0
2017	920	1,020	830	2,980	660	26.00	75.00	6.30	3.1	2.5	1.0
2018	920	1,030	840	3,000	670	26.50	(D)	6.30	3.2	(D)	0.9

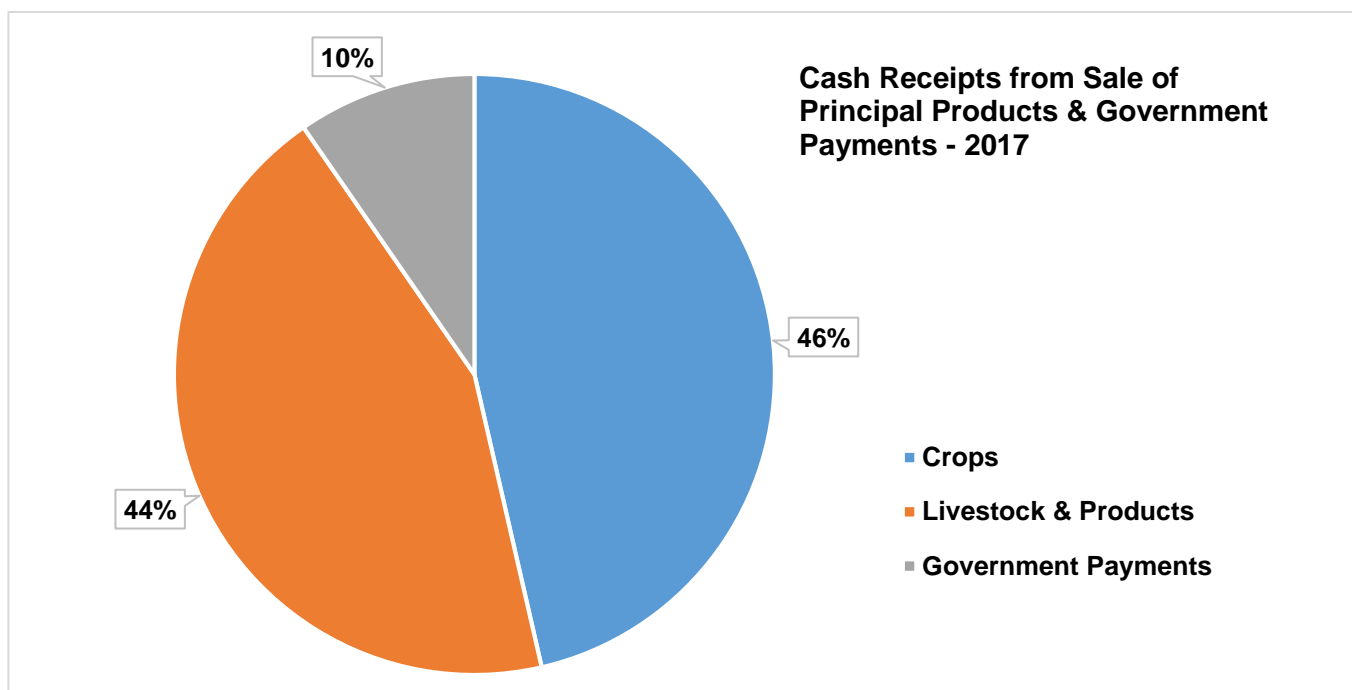
(D) Withheld to avoid disclosing data for individual operations.

¹ Rent to Value is rent as a percentage of per acre value of rented land.

Cash Receipts from Sale of Principal Products & Government Payments – Montana: 2008-2017

Year	Livestock & Livestock Products (1,000 Dollars)	Crops (1,000 Dollars)	Total Receipts From Marketings (1,000 Dollars)	Government Payments (1,000 Dollars)	Total All Cash Receipts (1,000 Dollars)
2008	1,158,045	1,682,765	2,840,811	294,380	3,135,191
2009	1,140,829	1,653,934	2,794,763	256,273	3,051,036
2010	1,282,444	1,755,737	3,038,181	327,112	3,365,293
2011	1,439,981	2,260,909	3,700,890	298,649	3,999,539
2012	1,574,278	2,342,499	3,916,777	239,263	4,156,040
2013	1,764,065	2,360,222	4,124,287	250,350	4,374,637
2014	2,251,570	2,356,489	4,608,059	158,925	4,766,984
2015	1,869,607	1,887,960	3,757,567	131,273	3,888,840
2016	1,617,868	2,038,325	3,656,192	235,107	3,891,299
2017	1,709,810	1,804,675	3,514,485	374,556	3,889,041

Details may not add due to rounding.



Cash Receipts from Marketing by Commodities – Montana: 2013-2017

Montana	2013	2014	2015	2016	2017
	\$1,000	\$1,000	\$1,000	\$1,000	\$1,000
All Commodities.....	4,124,287	4,608,059	3,757,567	3,656,192	3,514,485
Animals & Products	1,764,065	2,251,570	1,869,607	1,617,868	1,709,810
Meat Animals.....	1,586,552	2,062,542	1,699,046	1,461,379	1,546,060
Cattle & Calves	1,523,321	1,984,463	1,639,423	1,412,058	1,492,260
Hogs.....	63,231	78,079	59,623	49,321	53,800
Dairy Products, Milk	54,791	65,120	43,806	45,820	49,525
Poultry & Eggs.....	20,439	23,405	33,718	19,331	20,246
Chicken Eggs.....	10,705	12,965	22,500	7,870	11,192
Farm Chickens.....	12	12	15	13	8
Turkeys	9,722	10,429	11,203	11,448	9,046
Miscellaneous Animals & Products ...	102,283	100,503	93,037	91,338	93,979
Sheep & Lambs	NA	NA	NA	NA	NA
Honey.....	31,237	29,795	23,509	21,670	24,012
Mohair	5	5	5	5	4
Other Animals & Products	67,147	67,300	66,027	66,243	66,637
All Other Animals & Products.....	66,115	65,815	65,550	65,830	65,595
Mink Pelts.....	1,032	1,485	477	413	1,042
Wool.....	3,894	3,403	3,496	3,420	3,325
Crops	2,360,222	2,356,489	1,887,960	2,038,325	1,804,675
Food Grains.....	1,284,477	1,331,875	910,915	918,994	795,402
Wheat.....	1,284,477	1,331,875	910,915	918,994	795,402
Feed Crops.....	713,182	662,825	574,513	531,702	565,034
Barley.....	256,140	239,822	227,938	177,159	168,623
Corn	36,650	31,772	23,505	20,573	18,886
Hay.....	417,522	390,240	320,572	330,812	375,606
Oats	2,870	990	2,498	3,158	1,919
Oil Crops.....	32,256	37,122	31,174	30,062	35,518
Flaxseed	2,903	5,075	3,915	4,424	3,856
Miscellaneous Oil Crops	21,070	20,200	16,715	17,796	26,792
Canola.....	16,512	14,883	11,875	10,198	15,936
Mustard Seed.....	4,558	5,317	4,839	7,599	10,856
Safflower.....	8,284	11,847	10,544	7,841	4,869
Vegetables & Melons	188,814	193,961	221,489	407,547	271,729
Dry Beans	15,930	12,548	16,145	34,591	73,800
Dry Peas	98,403	101,270	90,168	120,627	43,045
Dry Peas, Austrian Winter.....	2,418	1,478	848	1,872	651
Dry Peas, Edible	95,985	99,792	89,320	118,755	42,394
Lentils.....	35,411	40,151	73,993	210,131	112,359
Potatoes.....	39,070	39,992	41,184	42,199	42,525
Potatoes, Fall	39,070	39,992	41,184	42,199	42,525
Fruits & Nuts.....	3,702	3,991	1,769	NA	NA
Cherries	3,702	3,991	1,769	NA	NA
Cherries, Sweet.....	3,702	3,991	1,769	NA	NA
All Other Crops.....	137,791	126,716	148,099	150,019	136,993
Sugar Beets	68,859	54,838	71,743	70,198	60,612
Mushrooms	4,282	4,327	4,621	4,621	4,740
Miscellaneous Crops	64,650	67,550	71,735	75,200	71,640

'NA' in a forecast year indicates that insufficient data exists to forecast cash receipts for that commodity, and the amounts are instead included in the aggregate forecast totals. 'NA' in an estimate year indicates that commodity survey data is not available, and the amounts are instead included in either the 'miscellaneous crops' or 'all other animals and products' category, depending on the commodity type.

Values are rounded to the nearest thousand. When 'Real (2018 dollars)' is selected, nominal values are adjusted for inflation using the chain-type GDP deflator, base year=2018.

Monthly Prices Received by Farmers, Select Commodities – Montana: 2013-2017

Commodity & Year	Jan	Feb	Mar	Apr	May	Jun	Jul	Aug	Sep	Oct	Nov	Dec
All Wheat	(Dollars/Bushel)											
2013	8.40	8.26	8.11	8.00	7.96	7.72	7.82	7.14	6.92	7.00	7.03	7.04
2014	6.81	6.57	6.57	6.60	6.79	6.79	6.53	6.22	5.86	5.87	6.82	6.36
2015	6.76	6.48	6.14	6.18	5.67	5.42	5.31	4.91	4.67	4.95	5.13	5.17
2016	5.05	4.74	4.53	4.62	4.62	4.40	4.62	4.05	4.04	4.19	4.40	4.52
2017	4.47	4.51	4.57	4.52	4.57	4.63	5.00	5.13	5.14	5.26	5.42	5.30
Winter Wheat												
2013	8.25	8.22	8.05	7.92	7.88	7.55	7.44	7.06	7.07	7.15	7.20	7.18
2014	7.02	6.85	6.83	6.78	6.89	7.08	6.51	6.18	5.74	5.45	5.71	5.99
2015	6.31	5.85	5.57	5.75	5.54	5.57	5.21	4.80	4.52	4.75	4.78	4.91
2016	4.80	4.49	4.44	4.32	4.34	4.08	4.18	3.73	3.61	3.47	3.67	3.95
2017	4.09	3.93	3.78	3.92	3.94	4.01	4.41	4.39	4.15	4.55	4.78	4.78
Spring Wheat												
2013	8.55	8.33	8.18	8.05	8.03	7.82	7.74	7.18	6.77	6.87	6.87	6.87
2014	6.59	6.41	6.42	6.48	6.75	6.56	6.32	6.06	5.80	6.05	6.58	6.21
2015	6.51	5.91	6.01	6.44	5.56	5.12	5.22	4.69	4.79	4.82	5.11	4.95
2016	4.89	4.79	4.47	4.70	4.72	4.63	4.75	4.36	4.29	4.38	4.56	4.77
2017	4.67	4.92	5.03	5.00	4.96	5.42	5.92	6.17	6.13	5.98	6.27	6.33
Durum Wheat												
2013	8.77	8.10	8.04	8.17	(D)	8.02	8.56	7.75	(D)	6.90	(D)	(D)
2014	7.01	6.57	6.55	6.81	(D)	(D)	7.63	7.74	8.37	(D)	10.90	10.60
2015	(D)	10.80	10.20	(D)	8.22	(D)	(D)	(D)	(S)	(D)	(D)	(D)
2016	(D)	(D)	(D)	(D)	(D)	6.36	6.36	(D)	(D)	(D)	5.91	5.75
2017	6.07	5.98	5.91	5.97	5.85	6.03	(D)	6.87	(D)	(D)	(D)	(D)
All Barley												
2013	6.52	6.49	6.34	6.32	6.46	6.31	6.38	6.68	6.25	6.35	6.23	6.17
2014	6.49	6.38	6.14	5.82	5.62	5.95	5.53	6.02	5.36	5.54	4.98	4.90
2015	4.60	5.05	4.65	5.07	4.45	4.82	5.31	5.78	6.19	5.85	5.86	6.06
2016	5.88	5.97	5.40	5.22	(D)	4.37	5.22	5.28	5.16	5.26	4.93	5.19
2017	5.10	5.15	5.01	5.15	5.01	4.19	4.48	4.63	4.02	3.80	4.27	4.21
Feed Barley												
2013	5.43	5.28	5.56	5.76	5.19	4.64	5.33	4.27	3.80	3.79	3.61	3.47
2014	3.36	3.20	3.38	3.16	3.39	3.36	2.99	2.60	2.64	2.41	2.25	2.71
2015	2.36	2.43	2.71	2.52	2.51	2.49	2.62	2.76	2.65	2.78	2.80	(D)
2016	2.66	2.76	(D)	(D)	(D)	2.85	2.63	2.66	2.43	(D)	2.57	2.38
2017	2.38	2.61	2.34	2.44	2.19	(D)	2.29	2.63	2.34	2.52	2.67	2.66
Malt Barely												
2013	6.60	6.59	6.47	6.42	6.56	6.52	6.48	6.73	6.50	6.46	6.35	6.26
2014	6.58	6.49	6.27	5.97	5.95	6.14	6.06	6.17	5.72	5.93	5.69	5.58
2015	5.59	5.82	5.65	6.33	5.72	6.20	6.10	6.14	6.22	5.93	6.04	6.11
2016	5.97	6.10	5.67	5.61	(D)	(D)	5.45	5.36	5.23	5.29	5.00	5.22
2017	5.13	5.16	5.06	5.28	5.12	4.29	4.67	4.68	4.33	4.16	4.38	4.38
Alfalfa Hay	(Dollars/Ton)											
2013	154.00	164.00	170.00	160.00	162.00	160.00	139.00	140.00	140.00	130.00	135.00	150.00
2014	145.00	140.00	140.00	140.00	135.00	130.00	125.00	130.00	130.00	130.00	130.00	125.00
2015	125.00	125.00	125.00	125.00	125.00	125.00	130.00	135.00	125.00	125.00	125.00	120.00
2016	115.00	120.00	120.00	125.00	130.00	130.00	130.00	135.00	135.00	135.00	135.00	130.00
2017	135.00	140.00	140.00	130.00	130.00	135.00	135.00	145.00	145.00	145.00	145.00	140.00
Other Hay												
2013	126.00	125.00	164.00	162.00	147.00	161.00	124.00	123.00	130.00	125.00	130.00	110.00
2014	120.00	110.00	110.00	115.00	105.00	110.00	110.00	120.00	120.00	120.00	120.00	115.00
2015	115.00	120.00	115.00	115.00	115.00	120.00	125.00	125.00	120.00	120.00	120.00	110.00
2016	110.00	110.00	110.00	115.00	115.00	120.00	120.00	125.00	125.00	125.00	125.00	130.00
2017	125.00	130.00	130.00	130.00	130.00	135.00	135.00	140.00	140.00	140.00	140.00	135.00

(D) Withheld to avoid disclosing data for individual operations.

(S) Insufficient number of reports to establish an estimate.

Marketing Year Average Prices, by Commodity – Montana: 2009-2017 ¹

Commodity	Unit	2009	2010	2011	2012	2013	2014	2015	2016	2017
Wheat, All	Bu	5.18	6.29	7.68	8.15	6.87	6.23	4.83	4.43	5.15
Wheat, Winter .	Bu	4.79	5.81	6.74	7.96	7.05	5.86	4.59	3.88	4.50
Wheat, Spring .	Bu	5.72	6.87	8.36	8.39	6.70	6.08	4.80	4.76	6.10
Corn, Grain	Bu	4.23	6.00	6.47	7.21	4.27	3.77	4.01	4.15	3.50
Barley, All	Bu	4.86	4.08	5.27	6.41	6.32	5.33	5.82	5.12	4.35
Dry Beans ¹	Cwt	28.60	27.00	34.70	37.60	30.10	20.80	28.90	26.00	34.50
Sugarbeets	Ton	53.40	64.00	71.90	63.80	39.40	49.70	52.90	36.60	(NA)
Oats	Bu	2.54	2.66	3.04	3.74	2.87	3.30	3.33	3.20	3.45
Hay, All (Baled) .	Ton	95.50	80.00	98.00	143.00	138.00	126.00	124.00	132.00	141.00
Alfalfa	Ton	96.00	79.00	98.00	146.00	141.00	127.00	125.00	134.00	142.00
Other Hay	Ton	96.00	83.00	94.00	126.00	122.00	117.00	117.00	126.00	138.00
Potatoes, All	Cwt	10.60	11.50	12.50	12.00	12.90	12.80	13.00	12.70	12.50
Fall	Cwt	10.60	11.50	12.50	12.00	12.90	12.80	13.00	12.70	12.50
Milk Cows	Hd	1,400.00	1,340.00	1,390.00	1,390.00	1,400.00	1,680.00	1,880.00	1,710.00	1,590.00
Chickens ²	Lbs	0.042	0.059	0.051	0.070	0.050	0.069	0.057	0.059	0.065
Eggs	Doz	0.772	0.667	0.875	0.864	0.898	1.087	1.901	0.694	0.872
Milk, All	Cwt	14.60	16.90	19.90	18.00	18.70	22.00	14.90	15.80	17.50

(NA) Not Available.

¹ Prices applies on clean basis.

² Excluding Broilers.

Marketing of Major Montana Crops: Estimated Percent of Monthly Farm Sales – Montana: 2012-2017

Marketing Year	Jul	Aug	Sep	Oct	Nov	Dec	Jan	Feb	Mar	Apr	May	Jun
All Wheat	Percent											
2012-2013	8	13	10	8	7	13	10	6	9	8	3	5
2013-2014	3	7	11	11	9	9	10	7	11	9	5	8
2014-2015	8	11	10	9	7	12	10	8	9	6	5	5
2015-2016	8	8	3	7	6	12	10	5	11	9	8	13
2016-2017	13	13	7	6	7	5	7	5	11	9	6	11
All Barley	Percent											
2012-2013	15	12	15	7	5	5	10	10	7	5	6	3
2013-2014	3	20	11	14	10	6	11	6	7	3	4	5
2014-2015	7	31	11	5	6	5	5	8	9	4	5	4
2015-2016	9	11	7	8	8	26	9	12	5	2	1	2
2016-2017	6	15	5	6	8	9	7	24	8	4	5	3
Oats	Percent											
2012-2013	10	13	3	5	23	16	10	(NA)	(NA)	(NA)	15	5
2013-2014	(NA)	(NA)	4	65	15	(NA)	(NA)	(NA)	(NA)	8	8	(NA)
2014-2015	(NA)	(NA)	8	(NA)	10	6	(NA)	5	(NA)	(NA)	65	6
2015-2016	(NA)	(NA)	(NA)	17	13	(NA)	28	12	(NA)	23	(NA)	7
2016-2017	14	19	17	(NA)	10	13	8	11	4	1	(NA)	3
Marketing Year	Jun	Jul	Aug	Sep	Oct	Nov	Dec	Jan	Feb	Mar	Apr	May
All Hay	Percent											
2012-2013	5	13	11	12	9	10	12	9	8	6	3	2
2013-2014	4	11	13	12	9	11	12	9	8	6	3	2
2014-2015	4	11	14	12	9	10	12	9	8	6	3	2
2015-2016	4	16	12	9	9	11	11	9	8	6	3	2
2016-2017	4	13	12	11	9	11	12	9	8	6	3	2

(NA) Not Available.

Record Highs & Lows: Acreage, Yield, & Production of Crops – Montana

Units	Record High		Record Low		Record Began
	(Quantity)	(Year)	(Quantity)	(Year)	(Year)
Barley					
Harvested (1,000 Acres)	2,180	1986	2	1882, 1883	1879
Yield (Bushels/Acre)	62.0	2010	12.0	1919	1879
Production(1,000 Bushels)	94,500	1987	79	1883	1879
Corn for Grain					
Harvested (1,000 Acres)	101	1923	2	1892-1897	1879
Yield (Bushels/Acre)	152.0	2009	8.5	1919	1879
Production(1,000 Bushels)	8,625	2013	42	1897	1879
Corn for Silage					
Harvested (1,000 Acres)	75	1989	2	1919, 1926-1931	1919
Yield (Tons/Acre)	24.0	2003, 2005, 2010	1.5	1934	1919
Production (1,000 Tons)	1,491	1978	7	1926, 1928	1919
All Dry Beans					
Harvested (1,000 Acres)	260	2017	2	1916, 1919	1909
Yield (Lbs/Acre)	2,280.0	1996	750.0	1917, 1924	1909
Production (1,000 Cwt)	2,594	2017	14	1919	1909
All Hay					
Harvested (1,000 Acres)	3,000	2005	1,125	1910	1909
Yield (Tons/Acre)	2.23	1995	0.88	1936	1909
Production (1,000 Tons)	6,105	2010	1,283	1910	1909
Alfalfa Hay					
Harvested (1,000 Acres)	2,000	2011	374	1919	1919
Yield (Tons/Acre)	2.60	1981	1.20	1935	1919
Production (1,000 Tons)	4,485	2010	598	1919	1919
Other Hay					
Harvested (1,000 Acres)	1,390	1965	650	1994	1919
Yield (Tons/Acre)	1.80	2010, 2016	0.39	1941	1919
Production (1,000 Tons)	2,000	2005	347	1941	1919
Oats					
Harvested (1,000 Acres)	650	1918	16	2014	1879
Yield (Bushels/Acre)	69.0	2014	13.5	1919	1879
Production(1,000 Bushels)	25,650	1915	810	2012	1879
Onions					
Harvested (1,000 Acres)	17.8	1995	700	1918	1918
Yield(Cwt/Acre)			120	1934	1918
Production (1,000 Cwt)	6,141	1995	97	1918	1918
All Potatoes					
Harvested (1,000 Acres)	32	1917	2	1882	1879
Yield(Cwt/Acre)	340	2009, 2017	45	1919	1879
Production(1,000 Acre)	3,795	2011	163	1882	1879
Sugarbeets					
Harvested (1,000 Acres)	83	1940	24.6	1984	1924
Yield (Tons/Acre)	35.0	2016	9.2	1928	1924
Production (1,000 Tons)	1,586	2016	258	1928	1924
All Wheat					
Harvested (1,000 Acres)	6,360	1996	9	1876	1869
Yield (Bushels/Acre)	42.4	2016	5.0	1919	1869
Production(1,000 Bushels)	214,180	2010	162	1876	1869
Spring Wheat					
Harvested (1,000 Acres)	4,576	1951	1,104	1969	1919
Yield (Bushels/Acre)	38.0	2010	4.9	1919	1919
Production(1,000 Bushels)	133,000	1995	5,695	1919	1919
Winter Wheat					
Harvested (1,000 Acres)	3,080	1976	127	1909	1909
Yield (Bushels/Acre)	49.0	2010, 2016	5.2	1919	1909
Production(1,000 Bushels)	105,350	2016	2,798	1919	1909

Record Highs & Lows: Livestock, Poultry, Honey, & Mink – Montana

Unit	Record High		Record Low		Record Began	
	(Quantity)	(Year)	(Quantity)	(Year)	(Year)	
Cattle & Calves						
Inventory Jan. 1	(1,000 Hd)	3,380	1974	67	1867	1867
Calf Crop (Annual)	(1,000 Hd)	1,640	1983	1,280	1987	1977
Beef Cows Jan. 1 ²	(1,000 Hd)	1,746	1974	294	1938	1920
Milk Cows Jan. 1 ²	(1,000 Hd)	215	1934	3	1867	1867
Milk Production (Annual)	(Million Lbs)	793	1930	275	1976	1924
Cattle on Feed Jan. 1	(1,000 Hd)	165	1972	26	2010	1965
Hogs & Pigs						
Inventory Dec. 1 ³	(1,000 Hd)	445	1943	1	1866, 1867	1866
Sheep & Lambs						
Total Inventory Jan. 1	(1,000 Hd)	4,280	1934	215	2015	1920
Breeding Inventory Jan. 1	(1,000 Hd)	4,060	1934	193	2015	1920
Lamb Crop (Annual)	(1,000 Hd)	2,695	1934	190	2015-2017	1924
Market Sheep & Lambs Jan. 1	(1,000 Hd)	40	1995	15	2010-2012	1994
Chickens						
Layers Dec. 1	(1,000 Hd)	941	2017	350	2008	2008
Egg Production ⁴	(Million Eggs)	154	2017	107	2009	2008
Honey						
Production (Annual)	(1,000 Lbs)	14,946	2013	5,040	1988	1987
Mink						
Pelts Produced	(1,000 Pelts)	25,730	2014	11,900	2016	2014

¹ Estimates are as of January 1, or December 1, annual (the entire year), or other time frame as noted.

² Cows and heifers two years old and over prior to 1970; cows that have calved beginning in 1970.

³ January 1, estimates discontinued in 1969. December 1, estimates beginning in 1969.

⁴ Annual egg production estimates cover the period December 1, previous year through November 30.

Rank & Quantity Produced, Selected Commodities – Montana, Leading State, & United States: 2017

Commodity	Unit	Montana		Leading State		United States
		Rank	Production	State	Production	
Field Crops						
Barley	(1,000 Bu)	2	28,815	Idaho	48,450	141,923
Beans, Dry Edible	(1,000 Cwt)	7	2,594	North Dakota	12,392	35,845
Garbanzo Beans	(1,000 Cwt)	1	2,444	Montana	2,444	6,905
Pinto Beans	(1,000 Cwt)	8	150	North Dakota	8,409	13,617
Dry Edible Peas	(1,000 Cwt)	2	3,854	North Dakota	7,380	14,177
Austrian Winter Peas	(1,000 Cwt)	3	25	Idaho	54	125
Canola	(1,000 Lbs)	3	119,190	North Dakota	2,542,800	3,118,680
Corn, Grain	(1,000 Bu)	40	4,550	Iowa	2,605,800	14,604,067
Corn, Silage	(1,000 Tons)	34	500	Wisconsin	16,720	128,356
Flaxseed	(1,000 Bu)	2	342	North Dakota	3,435	3,842
Hay, All	(1,000 Tons)	9	4,880	Texas	10,350	131,455
Hay, Alfalfa	(1,000 Tons)	3	3,360	California	4,488	55,068
Hay, Other	(1,000 Tons)	18	1,520	Texas	9,870	76,387
Lentils	(1,000 Cwt)	1	4,355	Montana	4,355	7,482
Oats	(1,000 Bu)	15	846	Minnesota	7,125	49,391
Potatoes, Fall	(1,000 Cwt)	12	3,740	Idaho	131,325	399,838
Safflower	(1,000 Lbs)	3	17,080	California	108,225	179,896
Sugar Beets	(1,000 Tons)	6	1,396	Minnesota	12,515	35,325
Wheat, All	(1,000 Bu)	4	127,430	Kansas	333,600	1,740,582
Wheat, Other Spring	(1,000 Bu)	3	48,090	North Dakota	207,870	416,236
Wheat, Durum	(1,000 Bu)	2	12,560	North Dakota	28,920	54,909
Wheat, Winter	(1,000 Bu)	6	66,780	Kansas	333,600	1,269,437
Livestock ¹						
All Cattle & Calves	(1,000 Head)	11	2,550	Texas	12,500	94,399
All Cows ²	(1,000 Head)	9	1,510	Texas	5,100	41,123
Calf Crop	(1,000 Head)	7	1,480	Texas	4,400	35,808
Beef Cows ²	(1,000 Head)	7	1,497	Texas	4,585	31,723
Milk Cows ²	(1,000 Head)	37	13	California	1,740	9,400
Milk Production	(Mil Lbs)	36	288	California	39,798	215,466
Cattle on Feed ³	(1,000 Head)	23	45	Nebraska	2,770	14,006
All Chickens (Excl Broilers) ..	(1,000 Head)	33	1,264	Iowa	67,725	504,536
All Layers	(1,000 Head)	33	941	Iowa	55,479	382,266
Egg Production ⁴	(Mil Eggs)	33	154	Iowa	15,953	105,689
All Hogs & Pigs	(1,000 Head)	23	179	Iowa	22,900	73,695
Breeding Hogs & Pigs	(1,000 Head)	23	25	Iowa	1,000	6,179
Pig Crop ⁴	(1,000 Head)	23	522	Iowa	23,137	129,578
Market Hogs & Pigs	(1,000 Head)	23	154	Iowa	21,900	67,516
Honey Production	(1,000 Lbs)	3	12,243	North Dakota	37,830	161,882
All Sheep & Lambs	(1,000 Head)	8	225	Texas	750	5,230
Breeding Sheep & Lambs ..	(1,000 Lambs)	6	195	Texas	600	3,830
Lamb Crop	(1,000 Head)	5	190	Texas	360	3,200
Market Sheep & Lambs	(1,000 Head)	11	30	California	255	1,400
Wool Production	(1,000 Lbs)	6	1,750	California	2,500	24,700
Miscellaneous						
Farms	(Number)	30	27,100	Texas	240,000	2,048,000
Land in Farms	(1,000 Acres)	2	59,800	Texas	129,600	910,000
Average Size of Farm	(Acres)	2	2,207	Wyoming	2,649	444

¹ Inventory January 1, 2018 for cattle and sheep; December 1, 2017 for hogs and chickens.

² Cows and heifers that have calved.

³ Feedlots greater than 1,000 head.

⁴ Pig crop & egg production for the marketing year December 1, 2016-November 30, 2017.

Crop Summary – Montana: 2017

2017	Planted	Harvested	Yield	Production	Unit	Value/Unit	Total Value
	(Acres)	(Acres)	(Per Acre)			(Dollars)	(1,000 Dollars)
Winter Wheat	1,750,000	1,590,000	42.0	66,780,000	Bu	4.50	300,510
Spring Wheat	2,500,000	2,290,000	21.0	48,090,000	Bu	6.10	293,349
Durum Wheat	890,000	785,000	16.0	12,560,000	Bu	6.40	80,384
All Wheat	5,140,000	4,665,000	27.3	127,430,000	Bu	5.15	674,243
Barley	770,000	565,000	51.0	28,815,000	Bu	4.35	125,345
Oats	70,000	18,000	47.0	846,000	Bu	3.45	2,919
Corn All Purposes	115,000						
Corn for Grain		65,000	70.0	4,550,000	Bu	3.50	15,925
Corn for Silage		25,000	20.0	500,000	Tons	(NA)	(NA)
Potatoes	11,100	11,000	340.0	3,740,000	Cwt	12.50	46,750
Sugar Beets	42,900	42,700	32.7	1,396,000	Tons	(NA)	(NA)
Pinto Beans	6,000	6,000	2,500.0	150,000	Cwt	(NA)	(NA)
Garbanzo Beans	269,000	254,000	960.0	2,444,000	Cwt	(NA)	(NA)
All Dry Beans	275,000	260,000	1,000.0	2,594,000	Cwt	34.50	89,493
All Dry Peas	525,000	470,000	820.0	3,854,000	Cwt	11.00	42,394
Lentils	730,000	670,000	650.0	4,355,000	Cwt	25.80	112,359
Austrian Winter Peas	20,000	4,000	630.0	25,000	Cwt	(D)	(D)
Flaxseed	52,000	38,000	9.0	342,000	Bu	8.90	3,044
Safflower	39,000	28,000	610.0	17,080,000	Lbs	(D)	(D)
Mustard Seed					Lbs	(NA)	(NA)
Canola	155,000	137,000	870.0	119,190,000	Lbs	15.20	18,117
Alfalfa Seed		12,800	360.0	4,610,000	Lbs	(NA)	(NA)
Alfalfa Hay		1,600,000	2.10	3,360,000	Tons	142.00	477,120
Other Hay		950,000	1.60	1,520,000	Tons	138.00	209,760
All Hay		2,550,000	1.91	4,880,000	Tons	141.00	686,880

(D) Withheld to avoid disclosing data for individual operations.
(NA) Not Available.

Crop Summary – Montana: 2016

2016	Planted	Harvested	Yield	Production	Unit	Value/Unit	Total Value
	(Acres)	(Acres)	(Per Acre)			(Dollars)	(1,000 Dollars)
Winter Wheat	2,250,000	2,150,000	49.0	105,350,000	Bu	3.88	408,758
Spring Wheat	2,100,000	2,060,000	36.0	74,160,000	Bu	4.76	353,002
Durum Wheat	780,000	765,000	41.0	31,365,000	Bu	5.93	185,994
All Wheat	5,130,000	4,975,000	42.4	210,875,000	Bu	4.43	947,754
Barley	990,000	780,000	60.0	46,800,000	Bu	5.12	239,616
Oats	60,000	28,000	47.0	1,316,000	Bu	3.20	4,211
Corn All Purposes	115,000						
Corn for Grain		55,000	100.0	5,500,000	Bu	4.15	22,825
Corn for Silage		55,000	22.0	1,210,000	Tons	(NA)	(NA)
Potatoes	11,100	11,000	335.0	3,685,000	Cwt	12.70	46,800
Sugar Beets	45,600	45,300	35.0	1,586,000	Tons	36.60	58,048
Pinto Beans	4,000	3,500	2,300.0	81,000	Cwt	(NA)	(NA)
Garbanzo Beans	99,000	96,000	1,600.0	1,532,000	Cwt	(NA)	(NA)
All Dry Beans	103,000	99,500	1,620.0	1,613,000	Cwt	26.00	41,938
All Dry Peas	610,000	580,000	1,950.0	11,310,000	Cwt	10.50	118,755
Lentils	520,000	505,000	1,460.0	7,373,000	Cwt	28.50	210,131
Austrian Winter Peas	15,000	7,000	1,300.0	91,000	Cwt	(D)	(D)
Flaxseed	29,000	28,000	22.0	616,000	Bu	8.04	4,953
Safflower	37,000	34,000	810.0	27,540,000	Lbs	(D)	(D)
Mustard Seed	52,000	50,000	990.0	49,500,000	Lbs	(NA)	(NA)
Canola	62,000	60,000	1,670.0	100,200,000	Lbs	14.60	14,629
Alfalfa Seed		12,600	473.0	5,957,000	Lbs	(NA)	(NA)
Alfalfa Hay		1,800,000	2.00	3,600,000	Tons	134.00	482,400
Other Hay		850,000	1.80	1,530,000	Tons	126.00	192,780
All Hay		2,650,000	1.94	5,130,000	Tons	132.00	675,180

(D) Withheld to avoid disclosing data for individual operations.
(NA) Not available.

Usual Planting & Harvesting Dates by Crop – Montana

Crop	Usual Planting Dates			Usual Harvesting Dates		
	Begin	Most Active	End	Begin	Most Active	End
Barley, Spring	Apr 3	Apr 13 - May 11	May 20	Jul 27	Aug 3 - Sep 2	Sep 10
Beans, Dry	May 5	May 10 - Jun 3	Jun 9	Aug 27	Sep 3 - Oct 2	Oct 11
Corn for Grain	Apr 26	May 4 - May 28	Jun 4	Oct 4	Oct 25 - Dec 3	Dec 8
Corn for Silage	Apr 26	May 4 - May 28	Jun 4	Aug 26	Sep 6 - Oct 1	Oct 10
Hay, Alfalfa	--	--	--	Jun 18	--	Sep 23
Hay, Other	--	--	--	Jun 20	--	Oct 7
Oats, Spring	Apr 18	Apr 26 - May 28	Jun 5	Aug 8	Aug 15 - Sep 9	Sep 22
Potatoes, Fall	May 7	May 17 - Jun 7	Jun 13	Sep 19	Sep 22 - Oct 23	Oct 31
Sugar Beets	Apr 14	Apr 20 - May 12	May 18	Sep 28	Oct 9 - Oct 27	Nov 4
Wheat, Durum	Apr 25	May 1 - Jun 1	Jun 15	Aug 11	Aug 19 - Sep 22	Oct 4
Wheat, Spring	Apr 6	Apr 14 - May 12	May 18	Jul 30	Aug 7 - Sep 6	Sep 13
Wheat, Winter	Sep 6	Sep 12 - Oct 7	Oct 16	Jul 22	Jul 26 - Aug 12	Aug 17

(--) There are no planting days or most active harvesting days associated with Hay or Alfalfa.

All Wheat: Area Planted & Harvested, Yield, Production, Price, & Value – Montana: 2008-2017

Year	Area Planted	Area Harvested	Yield per Acre	Production	Price per Bushel ¹	Value of Production
	(1,000 Acres)	(1,000 Acres)	(Bushels)	(1,000 Bushels)	(Dollars)	(1,000 Dollars)
2008	5,750	5,480	30.1	164,920	6.84	1,140,389
2009	5,470	5,255	33.3	175,125	5.18	908,990
2010	5,370	5,140	41.7	214,180	6.29	1,361,460
2011	5,100	4,975	35.2	174,970	7.68	1,338,203
2012	5,800	5,615	34.8	195,590	8.15	1,600,489
2013	5,400	5,165	39.0	201,635	6.87	1,386,401
2014	5,985	5,650	37.1	209,470	6.23	1,298,295
2015	5,620	5,365	35.1	188,515	4.83	924,768
2016	5,130	4,975	42.4	210,875	4.43	947,754
2017	5,140	4,665	27.3	127,430	5.34	680,476

¹ Marketing year average price.

Winter Wheat: Area Planted & Harvested, Yield, Production, Price, & Value – Montana: 2008-2017

Year	Area Planted	Area Harvested	Yield per Acre	Production	Price per Bushel ¹	Value of Production
	(1,000 Acres)	(1,000 Acres)	(Bushels)	(1,000 Bushels)	(Dollars)	(1,000 Dollars)
2008	2,600	2,420	39.0	94,380	6.31	595,538
2009	2,550	2,420	37.0	89,540	4.79	428,897
2010	2,000	1,900	49.0	93,100	5.81	540,911
2011	2,250	2,190	41.0	89,790	6.74	605,185
2012	2,300	2,170	39.0	84,630	7.96	673,655
2013	2,000	1,900	43.0	81,700	7.05	575,985
2014	2,500	2,240	41.0	91,840	5.86	538,182
2015	2,350	2,220	41.0	91,020	4.59	417,782
2016	2,250	2,150	49.0	105,350	3.88	408,758
2017	1,750	1,590	42.0	66,780	4.76	317,873

¹ Marketing year average price.

Winter Wheat: Acreage & Production for Irrigated & Non-Irrigated Practices – Montana: 2008-2017

Year	Irrigated				Non-Irrigated			
	Planted	Harvested for Grain	Yield per Acre	Production	Planted	Harvested for Grain	Yield per Acre	Production
	(1,000 Acres)	(1,000 Acres)	(Bushels)	(1,000 Bu)	(1,000 Acres)	(1,000 Acres)	(Bushels)	(1,000 Bu)
2008	65	59	74.5	4,400	2,535	2,361	38.0	89,980
2009	50	46	71.5	3,300	2,500	2,374	36.5	86,240
2010	40	36	78.6	2,830	1,960	1,864	48.4	90,270
2011	48	43	70.0	3,010	2,202	2,147	40.4	86,780
2012	53	46	74.6	3,430	2,247	2,124	38.2	81,200
2013	55	52	69.9	3,637	1,945	1,848	42.2	78,063
2014	43	34	64.9	2,208	2,457	2,206	40.6	89,632
2015	41	36	65.3	2,352	2,309	2,184	40.6	88,668
2016	38	32	68.4	2,190	2,212	2,118	48.7	103,160
2017	(1)	(1)	(1)	(1)	(1)	(1)	(1)	(1)

¹ Estimates discontinued in 2016.

Durum Wheat: Area Planted & Harvested, Yield, Production, Price, & Value – Montana: 2008-2017

Year	Area Planted	Area Harvested	Yield per Acre	Production	Price per Bushel ¹	Value of Production
	(1,000 Acres)	(1,000 Acres)	(Bushels)	(1,000 Bushels)	(Dollars)	(1,000 Dollars)
2008	600	580	19.0	11,020	9.69	106,784
2009	570	535	31.0	16,585	5.15	85,413
2010	520	510	34.0	17,340	6.22	107,855
2011	400	385	28.0	10,780	10.30	111,034
2012	550	545	28.0	15,260	8.12	123,911
2013	450	435	35.0	15,225	7.15	108,859
2014	435	430	31.0	13,330	9.45	125,969
2015	620	605	31.0	18,755	6.88	129,034
2016	780	765	41.0	31,365	5.93	185,994
2017	890	785	16.0	12,560	6.32	79,379

¹ Marketing year average price.

Other Spring Wheat: Area Planted & Harvested, Yield, Production, Price, & Value – Montana: 2008-2017

Year	Planted	Harvested for Grain	Yield per Acre	Production	Price per Bushel	Value of Production
	(1,000 Acres)	(1,000 Acres)	(Bushels)	(1,000 Bu)	(Dollars)	(1,000 Dollars)
2008	2,550	2,480	24.0	59,520	7.36	438,067
2009	2,350	2,300	30.0	69,000	5.72	394,680
2010	2,850	2,730	38.0	103,740	6.87	712,694
2011	2,450	2,400	31.0	74,400	8.36	621,984
2012	2,950	2,900	33.0	95,700	8.39	802,923
2013	2,950	2,830	37.0	104,710	6.70	701,557
2014	3,050	2,980	35.0	104,300	6.08	634,144
2015	2,650	2,540	31.0	78,740	4.80	377,952
2016	2,100	2,060	36.0	74,160	4.76	353,002
2017	2,500	2,290	21.0	48,090	6.21	298,639

**Other Spring Wheat: Acreage & Production for Irrigated & Non-Irrigated Practices
– Montana: 2008-2017**

Year	Irrigated				Non-Irrigated			
	Planted	Harvested for Grain	Yield per Acre	Production	Planted	Harvested for Grain	Yield per Acre	Production
	(1,000 Acres)	(1,000 Acres)	(Bushels)	(1,000 Bu)	(1,000 Acres)	(1,000 Acres)	(Bushels)	(1,000 Bu)
2008	181	178	65.0	11,570	2,369.0	2,302.0	21.0	47,950
2009	173	169	68.0	11,500	2,177.0	2,131.0	27.0	57,500
2010	183	179	72.3	12,938	2,667.0	2,551.0	35.6	90,802
2011	202	197	64.2	12,644	2,248.0	2,203.0	28.0	61,756
2012	179	176	68.0	11,962	2,771.0	2,724.0	30.7	83,738
2013	153	146	63.1	9,214	2,797.0	2,684.0	35.6	95,496
2014	149	143	69.6	9,953	2,901.0	2,837.0	33.3	94,347
2015	136	132	70.5	9,300	2,514.0	2,408.0	28.8	69,440
2016	102	99	74.3	7,360	1,998.0	1,961.0	34.1	66,800
2017	(1)	(1)	(1)	(1)	(1)	(1)	(1)	(1)

¹ Estimates discontinued after 2016.

Barley: Area Planted & Harvested, Yield, Production, Price, & Value – Montana: 2008-2017

Year	Area Planted	Area Harvested	Yield per Acre	Production	Price per Bushel ¹	Value of Production
	(1,000 Acres)	(1,000 Acres)	(Bushels)	(1,000 Bushels)	(Dollars)	(1,000 Dollars)
2008	860	740	50.0	37,000	5.78	213,860
2009	870	720	56.0	40,320	4.86	195,955
2010	760	620	62.0	38,440	4.08	156,835
2011	700	620	48.0	29,760	5.27	156,835
2012	900	790	51.0	40,290	6.41	258,259
2013	990	830	52.0	43,160	6.32	272,771
2014	920	770	58.0	44,660	5.33	238,038
2015	990	860	52.0	44,720	5.82	260,270
2016	990	780	60.0	46,800	5.12	239,616
2017	770	565	51.0	28,815	4.35	125,345

¹ Marketing year average price.

Oats: Area Planted & Harvested, Yield, Production, Price, & Value – Montana: 2008-2017

Year	Area Planted	Area Harvested	Yield per Acre	Production	Price per Bushel ¹	Value of Production
	(1,000 Acres)	(1,000 Acres)	(Bushels)	(1,000 Bushels)	(Dollars)	(1,000 Dollars)
2008	60.0	30.0	51.0	1,530	3.07	4,697
2009	70.0	32.0	56.0	1,792	2.54	4,552
2010	65.0	22.0	61.0	1,342	2.66	3,570
2011	40.0	18.0	50.0	900	3.04	2,736
2012	45.0	18.0	45.0	810	3.74	3,029
2013	50.0	22.0	54.0	1,188	2.87	3,410
2014	45.0	16.0	69.0	1,104	3.30	3,643
2015	50.0	22.0	53.0	1,166	3.33	3,883
2016	60.0	28.0	47.0	1,316	3.20	4,211
2017	70.0	18.0	47.0	846	3.45	2,919

¹ Marketing year average price.

Corn: Acreage, Production, & Value – Montana: 2008-2017

Year	Total		Harvested for Grain				Harvested for Silage			
	Planted	Harvested	Harvested	Yield	Production	Price/Bu	Value	Harvested	Yield	Production
	(Acres)	(Acres)	(Acres)	(Bu/Acre)	(1,000 Bu)	(Dollars)	(\$1,000)	(Acres)	(Tons/Acre)	(1,000 Tons)
2008	78,000	76,000	35,000	122.0	4,270	3.80	16,226	41,000	22	902
2009	72,000	71,000	26,000	152.0	3,952	4.23	16,717	45,000	23	1,035
2010	80,000	79,000	34,000	135.0	4,590	6.00	27,540	45,000	24	1,080
2011	77,000	74,000	36,000	127.0	4,572	6.47	29,581	38,000	21	798
2012	105,000	102,000	60,000	104.0	6,240	7.21	44,990	42,000	20	840
2013	120,000	116,000	75,000	115.0	8,625	4.27	36,829	41,000	23	943
2014	130,000	126,000	75,000	100.0	7,500	3.77	28,275	51,000	22	1,122
2015	105,000	100,000	50,000	110.0	5,500	4.01	22,055	50,000	23	1,150
2016	115,000	110,000	55,000	100.0	5,500	4.15	22,825	55,000	22	1,210
2017	115,000	90,000	65,000	70.0	4,550	3.50	15,925	25,000	20	500

Potatoes: Area Planted & Harvested, Yield, Production, Price, & Value – Montana: 2008-2017

Year	Area Planted	Area Harvested	Yield per Acre	Production	Price per Cwt ¹	Value of Production
	(1,000 Acres)	(1,000 Acres)	(Cwt)	(1,000 Cwt)	(Dollars)	(1,000 Dollars)
2008	10.9	10.5	330	3,465	11.60	40,194
2009	11.2	9.7	340	3,298	10.60	34,959
2010	11.5	11.3	325	3,673	11.50	42,240
2011	11.7	11.5	330	3,795	12.50	47,438
2012	12.0	11.7	320	3,744	12.00	44,928
2013	11.3	11.1	310	3,441	12.90	44,389
2014	11.5	11.3	320	3,616	12.80	46,285
2015	11.0	10.9	325	3,543	13.00	46,059
2016	11.1	11.0	335	3,685	12.70	46,800
2017	11.1	11.0	340	3,740	12.50	46,750

¹ Marketing year average price.

Sugar Beets: Area Planted & Harvested, Yield, Production, Price, & Value – Montana: 2008-2017

Year	Area Planted	Area Harvested	Yield per Acre	Production	Price per Ton ¹	Value of Production
	(1,000 Acres)	(1,000 Acres)	(Tons)	(1,000 Tons)	(Dollars)	(1,000 Dollars)
2008	31.7	30.7	26.8	823	50.80	41,808
2009	38.4	33.6	29.8	1,001	53.40	53,453
2010	42.6	42.5	29.5	1,254	64.00	80,256
2011	45.0	43.0	25.9	1,114	71.90	80,097
2012	46.6	45.8	28.2	1,292	63.80	82,430
2013	43.4	42.8	29.2	1,250	39.40	49,250
2014	45.1	44.4	32.3	1,434	49.70	71,270
2015	44.0	43.7	33.0	1,442	52.90	76,282
2016	45.6	45.3	35.0	1,586	36.60	58,048
2017	42.9	42.7	32.7	1,396	⁽²⁾	⁽²⁾

¹ Marketing year average price.

² Published in February 2019.

Lentils: Area Planted & Harvested, Yield, Production, Price, & Value – Montana: 2008-2017

Year	Area Planted	Area Harvested	Yield per Acre	Production	Price per Cwt ¹	Value of Production
	(1,000 Acres)	(1,000 Acres)	(Pounds)	(1,000 Cwt)	(Dollars)	(1,000 Dollars)
2008	83	79	770	608	34.90	21,219
2009	122	116	1,380	1,601	27.20	43,547
2010	260	247	1,360	3,359	23.90	80,280
2011	260	247	1,100	2,717	23.70	64,393
2012	205	195	1,100	2,145	19.50	41,828
2013	140	129	1,500	1,935	18.30	35,411
2014	130	119	1,480	1,761	22.80	40,151
2015	235	222	1,100	2,442	30.30	73,993
2016	520	505	1,460	7,373	28.50	210,131
2017	730	670	650	4,355	25.80	112,359

¹ Marketing year average price.

Dry Edible Beans: Area Planted & Harvested, Yield, Production, Price, & Value – Montana: 2008-2017

Year	Area Planted	Area Harvested	Yield per Acre	Production	Price per Cwt ¹	Value of Production
	(1,000 Acres)	(1,000 Acres)	(Pounds)	(1,000 Cwt)	(Dollars)	(1,000 Dollars)
2008	11.2	9.8	1,950.0	191	33.50	6,399
2009	11.9	11.5	2,100.0	242	28.60	6,921
2010	18.8	17.7	2,030.0	359	27.00	9,693
2011	15.0	14.8	1,820.0	270	34.70	9,369
2012	32.0	31.1	1,500.0	466	37.60	17,522
2013	24.0	23.6	1,920.0	453	30.10	13,635
2014	37.5	37.0	1,630.0	603	20.80	12,542
2015	49.0	46.5	1,340.0	624	28.90	18,034
2016	103.0	99.5	1,620.0	1,613	26.00	41,938
2017	275.0	260.0	1,000.0	2,594	34.50	89,493

¹ Marketing year average price.

Pinto Beans: Acreage & Production – Montana: 2008-2017

Year	Planted	Harvested	Yield per Acre	Production
	(1,000 Acres)	(1,000 Acres)	(Pounds)	(1,000 Cwt)
2008	8.6	7.2	2,420	174
2009	9.6	9.2	2,440	224
2010	12.5	11.8	2,330	275
2011	5.0	5.0	2,600	130
2012	9.0	8.5	2,500	213
2013	5.8	5.7	2,400	137
2014	6.0	5.8	2,200	128
2015	4.4	4.3	2,000	86
2016	4.0	3.5	2,300	81
2017	6.0	6.0	2,500	150

Garbanzo Beans: Acreage & Production – Montana: 2008-2017

Year	Planted	Harvested	Yield per Acre	Production
	(1,000 Acres)	(1,000 Acres)	(Pounds)	(1,000 Cwt)
2008	2.6	2.6	650	17
2009	2.3	2.3	780	18
2010	6.3	5.9	1,420	84
2011	9.0	8.9	1,340	119
2012	23.0	22.6	1,120	253
2013	18.0	17.7	1,760	312
2014	31.5	31.2	1,520	475
2015	43.0	40.6	1,270	517
2016	99.0	96.0	1,600	1,532
2017	269.0	254.0	960	2,444

Dry Edible Peas: Area Planted & Harvested, Yield, Production, Price, & Value – Montana: 2008-2017

Year	Area Planted	Area Harvested	Yield per Acre	Production	Price per Cwt ¹	Value of Production
	(1,000 Acres)	(1,000 Acres)	(Pounds)	(1,000 Cwt)	(Dollars)	(1,000 Dollars)
2008	245.0	231.0	1,080	2,495	14.50	36,178
2009	240.0	226.0	1,330	3,006	8.46	25,431
2010	220.0	207.0	2,000	4,140	9.13	37,798
2011	190.0	177.0	1,500	2,655	14.80	39,294
2012	315.0	293.0	1,500	4,395	14.60	64,167
2013	440.0	395.0	1,800	7,110	13.50	95,985
2014	525.0	504.0	1,800	9,072	11.00	99,792
2015	595.0	550.0	1,450	7,975	11.20	89,320
2016	610.0	580.0	1,950	11,310	10.50	118,755
2017	525.0	470.0	820	3,854	11.00	42,394

¹ Marketing year average price.

Austrian Winter Peas: Area Planted & Harvested, Yield, Production, Price, & Value – Montana: 2008-2017

Year	Area Planted	Area Harvested	Yield per Acre	Production	Price per Cwt ¹	Value of Production
	(1,000 Acres)	(1,000 Acres)	(Pounds)	(1,000 Cwt)	(Dollars)	(1,000 Dollars)
2008	10	3.0	960	29	21.70	629
2009	10	6.0	930	56	21.70	1,211
2010	16	7.0	1,570	110	15.50	1,705
2011	10	6.0	1,200	72	20.00	1,440
2012	11	6.9	1,000	69	21.90	1,511
2013	10	8.0	1,550	124	19.50	2,418
2014	12	7.0	1,100	77	19.20	1,478
2015	15	5.0	1,050	53	(D)	848
2016	15	7.0	1,300	91	(D)	(D)
2017	20	4.0	630	25	(D)	(D)

(D) Withheld to avoid disclosing data for individual operations.

¹ Marketing year average price.

Canola: Area Planted & Harvested, Yield, Production, Price, & Value – Montana: 2008-2017

Year	Area Planted	Area Harvested	Yield per Acre	Production	Price per Cwt ¹	Value of Production
	(1,000 Acres)	(1,000 Acres)	(Pounds)	(1,000 Pounds)	(Dollars)	(1,000 Dollars)
2008	7,500	7,400	1,910	14,134	16.50	2,332
2009	6,500	6,500	1,660	10,790	13.50	1,457
2010	17,500	17,100	1,730	29,583	20.00	5,917
2011	31,000	30,500	1,370	41,785	22.00	9,193
2012	51,000	49,500	1,200	59,400	26.20	15,563
2013	72,000	69,000	1,540	106,260	19.00	20,189
2014	63,000	61,000	1,380	84,180	16.10	13,553
2015	82,000	77,000	1,220	93,940	13.40	12,588
2016	62,000	60,000	1,670	100,200	14.60	14,629
2017	155,000	137,000	870	119,190	15.20	18,117

¹ Marketing year average price.

Camelina: Acreage & Production – Montana: 2008-2017

Year	Planted (1,000 Acres)	Harvested (1,000 Acres)	Yield per Acre (Pounds)	Production (1,000 Cwt)
2008	12.2	9.1	569.0	5,181.5
2009	20.8	19.5	615.0	11,998.0
2010	9.9	9.4	1,010.0	9,465.0
2011	2.5	2.4	750.0	1,800.0
2012	2.0	1.8	350.0	630.0
2013	1.5	1.4	370.0	518.0
2014	1.0	0.9	550.0	495.0
2015	0.5	0.4	580.0	232.0
2016	0.7	0.6	880.0	528.0
2017	(¹)	(¹)	(¹)	(¹)

¹ Estimates discontinued after 2017.

Mustard Seed: Acreage & Production – Montana: 2008-2017

Year	Area Planted (1,000 Acres)	Area Harvested (1,000 Acres)	Yield per Acre (Pounds)	Production (1,000 Pounds)
2008	28.0	24.4	410	10,004
2009	18.0	17.7	920	16,284
2010	16.5	16.0	800	12,800
2011	11.0	10.3	490	5,047
2012	25.0	24.5	490	12,005
2013	22.0	21.0	650	13,650
2014	16.5	15.2	990	15,048
2015	23.0	21.0	620	13,020
2016	52.0	50.0	990	49,500
2017	75.0	70.0	500	35,000

Flaxseed: Area Planted & Harvested, Yield, Production, Price, & Value – Montana: 2008-2017

Year	Area Planted (1,000 Acres)	Area Harvested (1,000 Acres)	Yield per Acre (Bushels)	Production (1,000 Bu)	Price per Bu ¹ (Dollars)	Value of Production (1,000 Dollars)
2008	9	8	9.0	72	17.70	1,274
2009	11	10	16.0	160	7.80	1,248
2010	15	15	17.0	255	11.20	2,856
2011	17	16	13.0	208	13.10	2,725
2012	18	13	12.0	156	13.60	2,122
2013	20	16	15.0	240	14.00	3,360
2014	28	25	17.0	425	11.80	5,015
2015	31	30	15.0	450	9.80	4,410
2016	29	28	22.0	616	8.04	4,953
2017	52	38	9.0	342	8.90	3,044

¹ Marketing year average price.

Safflower: Area Planted & Harvested, Yield, Production, Price, & Value – Montana: 2008-2017

Year	Area Planted (1,000 Acres)	Area Harvested (1,000 Acres)	Yield per Acre (Pounds)	Production (1,000 Pounds)	Price per Cwt ¹ (Dollars)	Value of Production (1,000 Dollars)
2008	29	28.0	600	16,800	27.50	4,620
2009	31	30.5	770	23,485	19.00	4,462
2010	28	27.0	850	22,950	19.00	4,361
2011	14	13.8	850	11,730	28.00	3,284
2012	27	25.8	730	18,834	34.00	6,404
2013	36	35.0	1,110	38,850	31.00	12,044
2014	54	50.5	840	42,420	27.00	11,453
2015	50	44.0	840	36,960	24.00	8,870
2016	37	34.0	810	27,540	(D)	(D)
2017	39	28.0	610	17,080	(D)	(D)

(D) Withheld to avoid disclosing data for individual operations.

¹ Marketing year average price.

Sweet Cherry: Acreage, Yield, Production, Price, & Value – Montana: 2009-2017

Year	Bearing Acreage	Yield per Acre ¹	Production		Price per Ton	Value of Utilized Production
			Total	Utilized		
	(Acres)	(Tons)	(Tons)	(Tons)	(Dollars)	(1,000 Dollars)
2008	710	2.20	1,560	1,450	2,730.00	3,958
2009	710	3.37	2,390	1,055	1,490.00	1,567
2010	730	3.38	2,470	2,050	1,960.00	4,026
2011	720	2.80	2,015	1,650	2,470.00	4,068
2012	690	3.26	2,250	1,395	1,450.00	2,021
2013	700	2.88	2,015	1,785	2,070.00	3,702
2014	700	2.99	2,090	1,930	2,070.00	3,991
2015	680	1.09	740	700	2,530.00	1,769
2016	(2)	(2)	(2)	(2)	(2)	(2)
2017	(2)	(2)	(2)	(2)	(2)	(2)

¹ Yield is based on total production.

² Estimates discontinued in 2016.

Alfalfa Seed: Acreage, Production, & Value – Montana: 2008-2017

Year	All					Irrigated		Non-Irrigated	
	Harvested	Yield per Acre	Production	Price per Pound	Value of Production	Harvested	Yield per Acre	Harvested	Yield per Acre
	(1,000 Acres)	(Pounds)	(1,000 Pounds)	(Dollars)	(Dollars)	(Acres)	(Pounds)	(1,000 Acres)	(Pounds)
2008	8.9	383	3,406	1.95	6,641,700	6,100	507	2,800	112
2009	7.1	459	3,259	1.94	6,322,460	5,900	499	1,200	262
2010	7.0	465	3,258	1.66	5,408,280	6,600	486	400	125
2011	6.6	415	2,742	2.02	5,538,840	4,900	496	1,700	183
2012	7.0	403	2,820	2.11	5,950,200	4,300	600	2,700	89
2013	9.4	353	3,320	1.54	5,112,800	7,000	440	2,400	100
2014	10.0	340	3,395	2.36	8,012,200	7,000	440	3,000	105
2015	12.0	412	4,944	2.46	12,162,240	7,200	600	4,800	130
2016	12.6	473	5,957	2.33	13,879,810	9,200	605	3,400	115
2017	12.8	360	4,610	2.29	10,556,900	9,100	470	3,700	90

All Hay: Area Harvested, Yield, Production, Price, & Value – Montana: 2008-2017

Year	Area Harvested	Yield per Acre	Production	Price per Ton ¹	Value of Production
	(1,000 Acres)	(Tons)	(1,000 Tons)	(Dollars)	(1,000 Dollars)
2008	2,400	1.70	4,080	116.00	471,120
2009	2,500	1.91	4,770	95.50	457,920
2010	2,850	2.14	6,105	80.00	488,775
2011	2,700	2.07	5,590	98.00	543,060
2012	2,200	1.87	4,120	143.00	579,120
2013	2,800	1.95	5,460	138.00	741,360
2014	2,730	1.97	5,381	126.00	668,427
2015	2,500	1.87	4,680	124.00	574,760
2016	2,650	1.94	5,130	132.00	675,180
2017	2,550	1.91	4,880	141.00	686,880

¹ Marketing year average price.

Alfalfa Hay: Area Harvested, Yield, Production, Price, & Value – Montana: 2008-2017

Year	Area Harvested	Yield per Acre	Production	Price per Ton ¹	Value of Production
	(1,000 Acres)	(Tons)	(1,000 Tons)	(Dollars)	(1,000 Dollars)
2008	1,600	1.90	3,040	117.00	355,680
2009	1,700	2.10	3,570	96.00	342,720
2010	1,950	2.30	4,485	79.00	354,315
2011	2,000	2.20	4,400	98.00	431,200
2012	1,500	2.00	3,000	146.00	438,000
2013	1,800	2.20	3,960	141.00	558,360
2014	1,850	2.10	3,885	127.00	493,395
2015	1,700	2.00	3,400	125.00	425,000
2016	1,800	2.00	3,600	134.00	482,400
2017	1,600	2.10	3,360	142.00	477,120

¹ Marketing year average price.

Other Hay: Area Harvested, Yield, Production, Price, & Value – Montana: 2008-2017

Year	Area Harvested	Yield per Acre	Production	Price per Ton ¹	Value of Production
	(1,000 Acres)	(Tons)	(1,000 Tons)	(Dollars)	(1,000 Dollars)
2008	800	1.30	1,040	111.00	115,440
2009	800	1.50	1,200	96.00	115,200
2010	900	1.80	1,620	83.00	134,460
2011	700	1.70	1,190	94.00	111,860
2012	700	1.60	1,120	126.00	141,120
2013	1,000	1.50	1,500	122.00	183,000
2014	880	1.70	1,496	117.00	175,032
2015	800	1.60	1,280	117.00	149,760
2016	850	1.80	1,530	126.00	192,780
2017	950	1.60	1,520	136.00	206,720

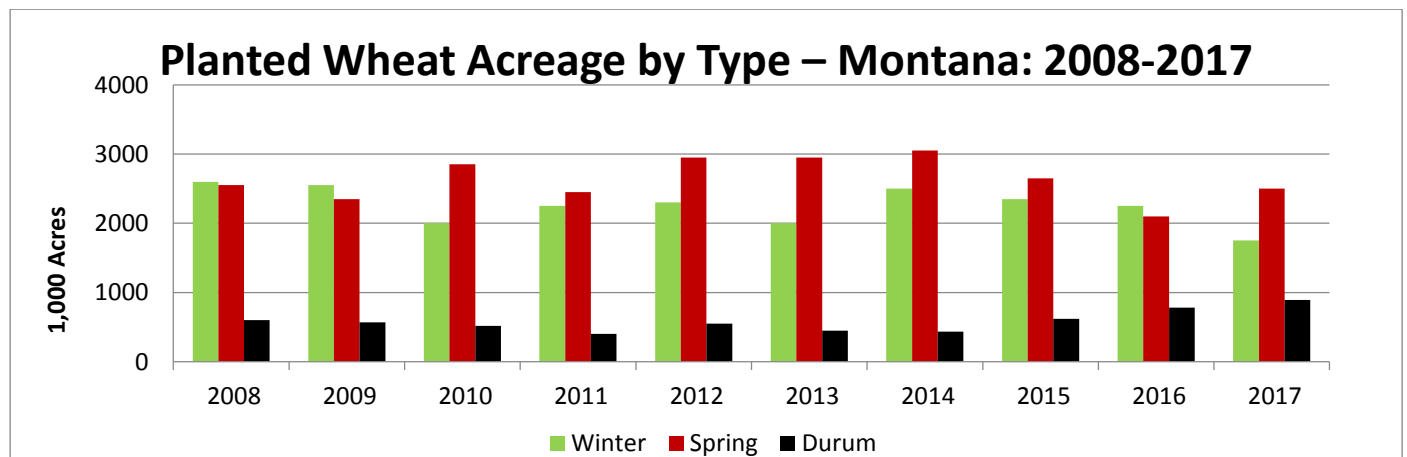
¹ Marketing year average price.

All Wheat, All Barley, & Oats, Quarterly Stocks – Montana

year	March 1		June 1		September 1		December 1	
	On Farm Total	All Positions Total ¹	On Farm Total	All Positions Total ¹	On Farm Total	All Positions Total ¹	On Farm Total	All Positions Total ¹
All Barley	(1,000 Bushels)							
2008	6,000	16,720	2,450	8,630	30,000	38,400	17,000	27,720
2009	8,500	19,910	5,000	13,770	35,000	43,600	26,000	36,890
2010	14,000	27,895	8,000	18,894	34,000	48,050	28,000	41,261
2011	17,000	29,768	6,500	16,810	28,000	39,082	20,000	31,970
2012	10,500	21,946	3,600	12,820	33,000	46,357	20,500	32,690
2013	9,500	21,945	3,650	12,488	33,000	45,035	24,000	38,183
2014	11,500	24,355	4,700	15,962	30,000	42,598	22,500	36,047
2015	14,500	26,961	5,500	15,782	32,500	45,527	20,000	33,376
2016	11,000	24,608	4,400	16,617	39,000	50,976	29,000	40,347
2017	17,000	29,013	7,100	18,504	26,000	38,890	18,000	29,195
Oats	(1,000 Bushels)							
2008	900	960	750	800	1,800	1,830	1,300	1,350
2009	1,000	1,055	700	730	1,900	1,960	1,400	1,475
2010	900	947	450	501	1,500	1,586	1,300	1,392
2011	1,200	1,266	650	702	1,200	1,265	1,000	1,040
2012	800	830	600	617	1,300	1,332	900	937
2013	600	652	400	428	1,350	1,421	1,100	1,172
2014	700	761	400	441	1,100	1,171	950	1,040
2015	760	834	500	536	1,100	1,124	850	879
2016	550	593	450	471	1,100	1,253	850	932
2017	660	768	380	404	800	(D)	700	791
All Wheat	(1,000 Bushels)							
2008	23,000	43,100	5,800	18,910	129,000	152,750	92,000	113,360
2009	54,000	73,510	26,000	40,350	159,500	186,160	119,000	148,700
2010	68,000	92,433	37,000	54,354	203,000	234,569	142,000	171,172
2011	81,000	106,270	36,000	49,819	157,000	186,726	105,000	130,935
2012	55,000	78,193	31,000	45,390	150,000	186,404	95,000	124,366
2013	48,000	75,646	24,000	36,558	144,000	173,173	115,000	145,615
2014	62,000	90,359	22,500	38,345	151,000	180,910	115,000	144,957
2015	67,000	95,113	37,000	55,185	154,000	187,929	119,000	151,022
2016	69,000	94,147	38,000	57,119	162,000	200,056	122,000	160,541
2017	72,000	107,623	38,000	61,035	94,000	131,792	76,000	109,445

(D) Withheld to avoid disclosing data for individual operations.

¹ Included on farm stocks and stocks at mills, elevators, warehouses, terminals, and stocks owned by commodity credit corporations.



Winter Wheat: Acreage, Yield, & Production by County & District – Montana: 2016

Counties & Districts ¹	Area Planted	Area Harvested	Yield	Production
	(Acres)	(Acres)	(Bushels/Acre)	(Bushels)
Flathead	5,100	5,000	72.7	363,500
Lake	2,800	1,500	65.0	97,500
Other	1,500	900	51.1	46,000
Northwest	9,400	7,400	68.5	507,000
Blaine	80,100	76,800	55.4	4,256,400
Chouteau	403,500	399,500	56.7	22,650,000
Glacier	86,500	84,500	42.5	3,595,000
Hill	313,300	308,300	49.7	15,322,000
Liberty	175,900	174,800	48.5	8,478,000
Phillips	38,400	37,400	52.0	1,943,800
Pondera	94,000	93,700	62.1	5,820,000
Teton	100,200	100,000	61.2	6,119,000
Toole	117,400	116,900	41.6	4,861,800
North Central	1,409,300	1,391,900	52.5	73,046,000
Daniels	13,100	12,700	45.3	575,300
Garfield	43,500	33,100	36.5	1,209,300
McCone	23,800	22,700	41.5	943,000
Richland	20,900	20,300	47.0	954,300
Roosevelt	10,700	10,400	36.4	379,000
Valley	10,600	10,000	51.0	509,900
Other	22,800	22,000	43.1	949,200
Northeast	145,400	131,200	42.1	5,520,000
Broadwater	10,900	10,900	40.6	443,000
Cascade	107,900	104,300	61.2	6,380,000
Fergus	126,100	105,100	39.9	4,196,000
Golden Valley	25,500	24,800	39.9	990,000
Judith Basin	58,200	54,200	43.1	2,338,000
Musselshell	12,400	11,800	30.3	357,000
Petroleum	15,900	12,600	26.4	333,000
Wheatland	20,400	19,800	29.6	586,000
Other	8,700	8,000	43.8	350,000
Central	386,000	351,500	45.4	15,973,000
Gallatin	20,500	20,100	62.8	1,263,000
Madison	1,600	1,600	48.1	77,000
Other	4,500	3,900	39.0	152,000
Southwest	26,600	25,600	58.3	1,492,000
Big Horn	84,900	82,300	47.2	3,886,000
Park	3,800	3,500	47.1	165,000
Stillwater	26,000	24,900	29.4	732,000
Other	66,200	64,200	29.4	1,886,000
South Central	180,900	174,900	38.1	6,669,000
Carter	20,300	18,100	19.0	344,000
Prairie	10,500	10,000	37.9	379,200
Rosebud	21,500	15,400	43.5	670,200
Other	40,100	24,000	31.2	749,600
Southeast	92,400	67,500	31.7	2,143,000
Montana	2,250,000	2,150,000	49.0	105,350,000

¹ Counties with no acres planted or counties that are combined into "Other" counties/districts to avoid disclosure of individual information.

Winter Wheat: Acreage, Yield, & Production by County & District – Montana: 2017

Counties & Districts ¹	Area Planted	Area Harvested	Yield	Production
	(Acres)	(Acres)	(Bushels/Acre)	(Bushels)
Flathead	5,200	5,100	65.3	333,000
Other	4,300	2,700	68.5	185,000
Northwest	9,500	7,800	66.4	518,000
Blaine	39,000	37,000	29.7	1,098,000
Chouteau	339,000	330,000	48.9	16,129,000
Glacier	74,000	64,000	48.8	3,120,000
Hill	225,000	218,000	35.6	7,760,000
Liberty	107,000	105,000	40.5	4,250,000
Phillips	21,000	13,500	26.6	359,000
Pondera	81,000	77,000	49.0	3,770,000
Teton	90,000	90,000	48.3	4,345,000
Toole	77,000	75,500	36.5	2,755,000
North Central	1,053,000	1,010,000	43.2	43,586,000
Garfield	31,000	19,000	26.7	508,000
McCone	10,000	8,100	14.9	121,000
Other	33,500	17,400	25.7	447,000
Northeast	74,500	44,500	24.2	1,076,000
Broadwater	11,000	11,000	47.5	522,000
Cascade	101,000	94,500	52.0	4,918,000
Fergus	105,000	90,500	36.3	3,288,000
Golden Valley	22,000	20,100	48.4	973,000
Judith Basin	50,000	47,200	37.0	1,745,000
Lewis & Clark	5,000	3,100	47.1	146,000
Meagher	4,500	4,300	37.9	163,000
Musselshell	15,000	12,400	28.5	354,000
Petroleum	11,500	9,900	20.5	203,000
Wheatland	22,000	21,500	30.8	662,000
Central	347,000	314,500	41.3	12,974,000
Gallatin	17,700	17,400	54.8	954,000
Other	5,800	5,600	35.7	200,000
Southwest	23,500	23,000	50.2	1,154,000
Big Horn	79,400	76,000	44.8	3,402,000
Park	3,100	2,700	39.6	107,000
Stillwater	24,000	20,500	36.4	747,000
Yellowstone	61,000	57,700	40.6	2,340,000
Other	8,000	5,100	41.0	209,000
South Central	175,500	162,000	42.0	6,805,000
Rosebud	13,000	8,500	27.6	235,000
Other	54,000	19,700	21.9	432,000
Southeast	67,000	28,200	23.7	667,000
Montana	1,750,000	1,590,000	42.0	66,780,000

¹ Counties with no acres planted or counties that are combined into "Other" counties/districts to avoid disclosure of individual information.

Spring Wheat: Acreage, Yield, & Production by County & District – Montana: 2016

Counties & Districts ¹	Area Planted	Area Harvested	Yield	Production
	(Acres)	(Acres)	(Bushels/Acre)	(Bushels)
Flathead	11,300	11,300	71.7	810,000
Lake	5,800	5,500	77.1	424,000
Ravalli	900	900	60.6	54,500
Other	2,700	2,500	69.0	172,500
Northwest	20,700	20,200	72.3	1,461,000
Blaine	111,300	107,900	29.9	3,221,000
Chouteau	106,400	101,900	36.5	3,721,000
Glacier	26,000	25,150	31.6	795,000
Hill	152,200	148,050	33.8	5,004,000
Liberty	65,800	64,900	39.2	2,547,000
Phillips	71,300	69,200	35.5	2,460,000
Pondera	41,600	41,100	42.2	1,736,000
Teton	26,200	26,000	40.2	1,046,000
Toole	101,500	100,700	27.0	2,718,000
North Central	702,300	684,900	33.9	23,248,000
Dawson	143,200	141,900	32.2	4,563,000
Richland	146,400	145,700	31.4	4,581,000
Roosevelt	229,000	228,200	32.9	7,515,000
Sheridan	24,100	24,100	40.5	977,000
Valley	254,900	252,800	40.9	10,336,000
Other	337,600	335,800	40.3	13,528,000
Northeast	1,135,200	1,128,500	36.8	41,500,000
Broadwater	17,300	15,700	44.1	693,000
Cascade	10,400	10,300	22.2	229,000
Fergus	24,200	22,200	27.6	612,500
Lewis & Clark	8,600	8,600	45.1	388,000
Petroleum	1,400	1,400	19.3	27,000
Other	35,700	35,000	23.4	820,500
Central	97,600	93,200	29.7	2,770,000
Madison	4,300	4,300	73.5	316,000
Other	24,900	24,400	74.2	1,810,000
Southwest	29,200	28,700	74.1	2,126,000
Carbon	2,100	1,900	23.2	44,000
Park	1,800	1,800	46.7	84,000
Stillwater	4,800	4,200	15.1	63,500
Sweet Grass	1,200	1,100	27.7	30,500
Treasure	4,500	4,000	46.8	187,000
Other	27,900	26,000	33.2	862,000
South Central	42,300	39,000	32.6	1,271,000
Carter	10,700	9,000	13.4	121,000
Powder River	1,200	1,000	19.0	19,000
Other	60,800	55,500	29.6	1,644,000
Southeast	72,700	65,500	27.2	1,784,000
Montana	2,100,000	2,060,000	36.0	74,160,000

¹ Counties with no acres planted or counties that are combined into "Other" counties/districts to avoid disclosure of individual information.

Spring Wheat: Acreage, Yield, & Production by County & District – Montana: 2017

Counties & Districts ¹	Area Planted	Area Harvested	Yield	Production
	(Acres)	(Acres)	(Bushels/Acre)	(Bushels)
Flathead	10,000	10,000	46.4	464,000
Lake	5,300	5,200	60.4	314,000
Ravalli	800	700	71.4	50,000
Other	1,900	1,800	48.3	87,000
Northwest	18,000	17,700	51.7	915,000
Blaine	155,000	145,000	18.5	2,677,000
Chouteau	168,000	157,000	25.9	4,063,000
Hill	239,000	236,000	29.7	7,000,000
Liberty	101,000	100,000	27.7	2,767,000
Phillips	94,500	75,600	16.9	1,280,000
Teton	53,000	52,800	35.7	1,885,000
Toole	134,000	133,600	21.4	2,865,000
Other	114,500	112,000	30.5	3,412,000
North Central	1,059,000	1,012,000	25.6	25,949,000
Daniels	117,000	107,000	13.5	1,443,000
Dawson	140,000	126,000	13.7	1,730,000
Garfield	58,000	44,300	12.9	572,000
McCone	182,000	159,500	11.9	1,892,000
Richland	145,000	135,500	18.1	2,455,000
Roosevelt	223,000	190,000	8.8	1,675,000
Sheridan	26,000	22,700	6.6	149,000
Valley	255,000	215,000	13.6	2,920,000
Northeast	1,146,000	1,000,000	12.8	12,836,000
Broadwater	11,700	11,700	50.7	593,000
Cascade	17,400	17,300	27.8	481,000
Fergus	42,900	42,100	22.3	940,000
Judith Basin	20,800	20,500	18.8	385,000
Meagher	1,800	1,800	26.7	48,000
Musselshell	4,500	4,400	21.4	94,000
Petroleum	5,000	4,200	9.5	40,000
Other	23,400	23,000	33.8	777,000
Central	127,500	125,000	26.9	3,358,000
Beaverhead	5,400	5,400	101.9	550,000
Gallatin	22,800	22,800	69.9	1,594,000
Other	6,800	6,700	68.1	456,000
Southwest	35,000	34,900	74.5	2,600,000
Big Horn	14,000	12,600	33.4	421,000
Treasure	3,000	2,800	57.1	160,000
Yellowstone	16,000	14,800	42.3	626,000
Other	7,000	5,800	27.4	159,000
South Central	40,000	36,000	37.9	1,366,000
Other	74,500	64,400	16.6	1,066,000
Southeast	74,500	64,400	16.6	1,066,000
Montana	2,500,000	2,290,000	21.0	48,090,000

¹ Counties with no acres planted or counties that are combined into "Other" counties/districts to avoid disclosure of individual information.

Durum Wheat: Acreage, Yield, & Production by County & District – Montana: 2016

Counties & Districts ¹	Area Planted	Area Harvested	Yield	Production
	(Acres)	(Acres)	(Bushels/Acre)	(Bushels)
Blaine	8,800	8,500	34.4	292,000
Chouteau	12,900	12,100	25.2	305,000
Glacier	15,500	15,300	33.0	505,000
Hill	22,400	22,200	43.2	960,000
Liberty	25,000	24,400	40.0	976,000
Phillips	12,800	12,000	43.5	522,000
Pondera	23,800	23,700	51.5	1,220,000
Teton	6,600	6,600	41.8	276,000
Toole	13,200	13,200	43.4	573,000
North Central	141,000	138,000	40.8	5,629,000
Daniels	124,000	123,500	47.9	5,917,000
Sheridan	308,000	306,500	41.4	12,680,000
Valley	47,100	46,700	47.4	2,213,000
Other	130,900	125,300	32.8	4,112,000
Northeast	610,000	602,000	41.4	24,922,000
Cascade	4,100	3,300	30.0	99,000
Other	9,700	9,300	36.9	343,000
Central	13,800	12,600	35.1	442,000
Other Districts	15,200	12,400	30.0	372,000
Montana	780,000	765,000	41.0	31,365,000

¹ Counties with no acres planted or counties that are combined into "Other" counties/districts to avoid disclosure of individual information.

Durum Wheat: Acreage, Yield, & Production by County & District – Montana: 2017

Counties & Districts ¹	Area Planted	Area Harvested	Yield	Production
	(Acres)	(Acres)	(Bushels/Acre)	(Bushels)
Blaine	18,000	17,000	14.5	247,000
Chouteau	16,800	15,500	24.0	372,000
Glacier	19,000	19,000	22.4	426,000
Hill	27,000	26,200	28.7	751,000
Pondera	32,000	32,000	36.8	1,177,000
Teton	9,700	9,700	36.3	352,000
Toole	25,000	25,000	24.9	623,000
Other	50,000	41,600	22.3	926,000
North Central	197,500	186,000	26.2	4,874,000
Daniels	150,000	142,000	13.7	1,945,000
Richland	21,000	17,600	14.9	263,000
Roosevelt	113,000	97,500	12.9	1,255,000
Sheridan	295,000	242,000	10.9	2,630,000
Valley	55,500	48,000	14.3	684,000
Other	21,500	19,900	12.6	251,000
Northeast	656,000	567,000	12.4	7,028,000
Other Districts	36,500	32,000	20.6	658,000
Montana	890,000	785,000	16.0	12,560,000

¹ Counties with no acres planted or counties that are combined into "Other" counties/districts to avoid disclosure of individual information.

Barley: Acreage, Yield, & Production by County & District – Montana: 2016

Counties & Districts ¹	Area Planted (Acres)	Area Harvested (Acres)	Yield (Bushels/Acre)	Production (Bushels)
Flathead	3,800	3,700	72.2	267,000
Lake	3,200	1,200	85.0	102,000
Ravalli	600	250	74.8	18,700
Other	1,900	150	48.7	7,300
Northwest	9,500	5,300	74.5	395,000
Blaine	20,000	15,500	49.4	765,000
Chouteau	80,000	78,000	53.4	4,165,000
Glacier	81,000	74,000	47.1	3,488,000
Hill	29,000	28,000	57.3	1,605,000
Liberty	23,000	22,500	51.3	1,155,000
Phillips	34,000	13,000	62.3	810,000
Pondera	99,000	98,000	70.0	6,864,000
Teton	104,000	101,000	72.2	7,295,000
Toole	76,000	70,000	39.7	2,778,000
North Central	546,000	500,000	57.9	28,925,000
Dawson	16,000	6,300	73.7	464,000
Richland	19,000	14,400	77.2	1,112,000
Roosevelt	14,000	10,100	52.2	527,000
Valley	13,000	2,300	40.0	92,000
Other	43,000	13,900	55.8	775,000
Northeast	105,000	47,000	63.2	2,970,000
Broadwater	6,000	5,300	82.6	438,000
Cascade	49,000	38,000	57.5	2,186,000
Fergus	36,000	20,300	27.9	567,000
Judith Basin	23,000	15,700	36.9	580,000
Lewis & Clark	13,500	12,700	68.3	868,000
Meagher	11,500	11,000	75.0	825,000
Wheatland	8,000	6,700	31.0	208,000
Other	20,000	8,300	17.8	148,000
Central	167,000	118,000	49.3	5,820,000
Gallatin	34,000	28,500	73.0	2,080,000
Other	17,000	11,500	95.2	1,095,000
Southwest	51,000	40,000	79.4	3,175,000
Big Horn	16,000	8,600	102.0	877,000
Carbon	10,500	9,200	117.1	1,077,000
Park	5,700	4,800	66.0	317,000
Stillwater	8,500	6,300	51.6	325,000
Yellowstone	28,000	25,000	50.2	1,255,000
Other	5,300	4,100	121.7	499,000
South Central	74,000	58,000	75.0	4,350,000
Powder River	4,200	600	45.8	27,500
Other	33,300	11,100	102.5	1,137,500
Southeast	37,500	11,700	99.6	1,165,000
Montana	990,000	780,000	60.0	46,800,000

¹ Counties with no acres planted or counties that are combined into "Other" counties/districts to avoid disclosure of individual information.

Barley: Acreage, Yield, & Production by County & District – Montana: 2017

Counties & Districts ¹	Area Planted	Area Harvested	Yield	Production
	(Acres)	(Acres)	(Bushels/Acre)	(Bushels)
Other	7,900	4,200	63.1	265,000
Northwest	7,900	4,200	63.1	265,000
Blaine	14,500	10,800	17.1	185,000
Chouteau	62,000	56,000	44.3	2,478,000
Glacier	60,000	55,000	40.3	2,217,000
Hill	24,000	22,500	22.1	498,000
Liberty	17,500	16,900	24.1	407,000
Phillips	21,500	3,000	13.3	40,000
Pondera	52,000	50,300	51.2	2,574,000
Teton	67,500	62,000	63.5	3,939,000
Toole	67,500	62,500	37.4	2,338,000
North Central	386,500	339,000	43.3	14,676,000
Dawson	14,100	1,500	21.4	32,100
McCone	18,500	3,700	21.1	78,000
Richland	13,700	1,100	28.2	31,000
Other	45,900	6,400	27.5	175,900
Northeast	92,200	12,700	25.0	317,000
Broadwater	5,700	4,700	100.6	473,000
Cascade	41,900	40,000	54.4	2,175,000
Fergus	35,300	24,300	31.5	765,000
Judith Basin	15,400	13,700	35.6	488,000
Lewis & Clark	8,500	6,900	73.5	507,000
Meagher	9,300	7,900	54.6	431,000
Wheatland	11,200	6,600	38.3	253,000
Other	14,700	7,900	32.0	253,000
Central	142,000	112,000	47.7	5,345,000
Gallatin	31,200	28,300	80.5	2,278,000
Madison	4,700	2,700	114.8	310,000
Other	5,300	2,200	94.1	207,000
Southwest	41,200	33,200	84.2	2,795,000
Big Horn	14,200	12,800	77.3	989,000
Carbon	9,000	8,400	126.5	1,063,000
Park	5,600	4,700	61.3	288,000
Treasure	4,400	4,300	130.2	560,000
Yellowstone	23,700	21,300	76.1	1,620,000
Other	5,400	4,400	40.9	180,000
South Central	62,300	55,900	84.1	4,700,000
Powder River	4,500	800	23.3	18,600
Rosebud	11,300	6,000	113.3	680,000
Other	22,100	1,200	15.3	18,400
Southeast	37,900	8,000	89.6	717,000
Montana	770,000	565,000	51.0	28,815,000

¹ Counties with no acres planted or counties that are combined into "Other" counties/districts to avoid disclosure of individual information.

Oats: Acreage, Yield, & Production by County & District – Montana: 2016

Counties & Districts ¹	Area Planted	Area Harvested	Yield	Production
	(Acres)	(Acres)	(Bushels/Acre)	(Bushels)
Hill	1,600	850	56.5	48,000
Toole	1,000	850	21.2	18,000
Other	11,000	5,800	61.4	356,000
North Central	13,600	7,500	56.3	422,000
Fergus	600	400	47.5	19,000
Judith Basin	800	550	46.4	25,500
Other	3,200	1,250	69.2	86,500
Central	4,600	2,200	59.5	131,000
Gallatin	700	600	73.3	44,000
Other	1,100	300	70.0	21,000
Southwest	1,800	900	72.2	65,000
Big Horn	900	450	43.3	19,500
Other	2,200	1,450	27.2	39,500
South Central	3,100	1,900	31.1	59,000
Other Districts	36,900	15,500	41.2	639,000
Montana	60,000	28,000	47.0	1,316,000

¹ Counties with no acres planted or counties that are combined into "Other" counties/districts to avoid disclosure of individual information.

Oats: Acreage, Yield, & Production by County & District – Montana: 2017

Counties & Districts ¹	Area Planted	Area Harvested	Yield	Production
	(Acres)	(Acres)	(Bushels/Acre)	(Bushels)
Lake	700	150	90.0	13,500
Other	2,100	450	67.8	30,500
Northwest	2,800	600	73.3	44,000
Hill	2,100	950	24.7	23,500
Other	16,100	6,450	37.9	244,500
North Central	18,200	7,400	36.2	268,000
Other	1,700	900	77.8	70,000
Southwest	1,700	900	77.8	70,000
Other	2,700	1,200	45.8	55,000
South Central	2,700	1,200	45.8	55,000
Other Districts	44,600	7,900	51.8	409,000
Montana	70,000	18,000	47.0	846,000

¹ Counties with no acres planted or counties that are combined into "Other" counties/districts to avoid disclosure of individual information.

Dry Peas: Acreage, Yield, & Production by County & District – Montana: 2016-2017

Counties & Districts ¹	2016				2017			
	Area Planted	Area Harvested	Yield per Acre	Production	Area Planted	Area Harvested	Yield per Acre	Production
	(Acres)	(Acres)	(Pounds)	(Cwt)	(Acres)	(Acres)	(Pounds)	(Cwt)
Blaine	15,400	14,100	1,850.0	261,000	(D)	(D)	(D)	(D)
Chouteau	21,500	21,000	1,850.0	389,000	21,900	21,000	1,420.0	299,000
Glacier	29,500	25,900	1,480.0	384,000	19,200	18,500	1,300.0	240,000
Hill	28,500	27,700	1,680.0	464,000	31,200	30,000	890.0	268,000
Liberty	15,400	15,400	2,010.0	310,000	17,900	17,500	740.0	129,000
Phillips	28,300	27,600	2,010.0	555,000	(D)	(D)	(D)	(D)
Pondera	7,100	7,000	2,800.0	196,000	5,300	5,300	1,810.0	96,000
Teton	6,800	6,400	2,190.0	140,000	(D)	(D)	(D)	(D)
Toole	22,500	21,400	1,180.0	252,000	22,900	22,500	1,090.0	245,000
Other	-	-	-	-	43,100	39,400	730.0	287,000
North Central	175,000	166,500	1,770.0	2,951,000	161,500	154,200	1,010.0	1,564,000
Daniels	45,700	45,200	2,870.0	1,299,000	(D)	(D)	(D)	(D)
McCone	48,500	46,000	2,140.0	986,000	41,700	34,800	720.0	251,000
Richland	19,100	18,500	1,810.0	334,000	(D)	(D)	(D)	(D)
Roosevelt	63,300	60,000	2,380.0	1,430,000	58,000	44,300	550.0	245,000
Sheridan	55,400	54,000	2,270.0	1,225,000	50,900	45,200	640.0	288,000
Valley	79,600	71,700	2,140.0	1,535,000	60,700	53,900	440.0	238,000
Other	36,400	35,600	1,480.0	526,000	83,200	73,800	700.0	515,000
Northeast	348,000	331,000	2,220.0	7,335,000	294,500	252,000	610.0	1,537,000
Cascade	5,600	5,500	1,750.0	96,200	2,800	2,800	1,830.0	51,300
Fergus	6,800	5,100	950.0	48,700	(D)	(D)	(D)	(D)
Golden Valley	3,300	3,300	1,440.0	47,500	(D)	(D)	(D)	(D)
Judith Basin	4,600	4,600	930.0	42,600	4,600	4,600	1,070.0	49,200
Other	13,500	13,500	1,010.0	137,000	15,400	15,100	960.0	144,500
Central	33,800	32,000	1,160.0	372,000	22,800	22,500	1,090.0	245,000
Other	5,100	5,100	2,220.0	113,000	(D)	(D)	(D)	(D)
Southwest	5,100	5,100	2,220.0	113,000	(D)	(D)	(D)	(D)
Yellowstone	(D)	(D)	(D)	(D)	7,200	7,200	1,380.0	99,300
Other	(D)	(D)	(D)	(D)	3,700	3,400	1,840.0	62,700
South Central ...	(D)	(D)	(D)	(D)	10,900	10,600	1,530.0	162,000
Other	33,800	31,300	1,150.0	361,000	(D)	(D)	(D)	(D)
Southeast	33,800	31,300	1,150.0	361,000	(D)	(D)	(D)	(D)
Other Districts ..	14,300	14,100	1,260.0	178,000	35,300	30,700	1,130.0	346,000
Montana	610,000	580,000	1,950.0	11,310,000	525,000	470,000	820.0	3,854,000

- Represents Zero.

(D) Withheld to avoid disclosing data for individual operations.

¹ Counties with no acres planted or counties that are combined into "Other" counties/districts to avoid disclosure of individual information.

All Dry Beans: Acreage, Yield, & Production by County & District – Montana: 2016-2017

Counties & Districts ¹	2016				2017			
	Area Planted	Area Harvested	Yield per Acre	Production	Area Planted	Area Harvested	Yield per Acre	Production
	(Acres)	(Acres)	(Pounds)	(Cwt)	(Acres)	(Acres)	(Pounds)	(Cwt)
Chouteau	15,200	15,100	1,560.0	236,000	36,900	36,700	1,130.0	415,000
Glacier	11,400	9,400	1,400.0	132,000	24,300	24,300	1,160.0	281,000
Hill	4,400	4,400	1,590.0	70,000	14,800	14,500	1,410.0	205,000
Liberty	-	-	-	-	26,200	26,000	930.0	241,000
Pondera	3,200	3,200	1,470.0	47,000	20,100	18,500	1,330.0	246,000
Teton	9,900	9,900	1,490.0	148,000	33,200	33,200	910.0	303,000
Toole	-	-	-	-	13,400	13,100	1,250.0	164,000
Other	12,700	12,100	1,460.0	177,000	5,600	5,300	680.0	36,000
North Central	56,800	54,100	1,500.0	810,000	174,500	171,600	1,100.0	1,891,000
Dawson	-	-	-	-	7,400	7,300	1,140.0	83,500
McCone	-	-	-	-	21,800	19,900	470.0	94,000
Richland	800	800	1,650.0	13,200	-	-	-	-
Roosevelt	-	-	-	-	8,800	7,600	550.0	41,500
Other	37,200	36,700	1,810.0	665,800	26,600	20,000	900.0	179,000
Northeast	38,000	37,500	1,810.0	679,000	64,600	54,800	730.0	398,000
Cascade	-	-	-	-	9,500	8,500	900.0	76,500
Other	4,900	4,750	1,470.0	70,000	11,900	11,300	770.0	87,500
Central	4,900	4,750	1,470.0	70,000	21,400	19,800	830.0	164,000
Other	-	-	-	-	1,300	1,200	1,300.0	15,600
Southwest	-	-	-	-	1,300	1,200	1,300.0	15,600
Stillwater	-	-	-	-	1,300	1,300	1,520.0	19,800
Other	-	-	-	-	2,300	2,200	1,480.0	32,500
South Central	-	-	-	-	3,600	3,500	1,490.0	52,300
Other	2,000	1,900	1,740.0	33,000	-	-	-	-
Southeast	2,000	1,900	1,740.0	33,000	-	-	-	-
Other Districts	1,300	1,250	1,680.0	21,000	9,600	9,100	800.0	73,100
Montana	103,000	99,500	1,620.0	1,613,000	275,000	260,000	1,000.0	2,594,000

- Represents zero.

¹ Counties with no acres planted or counties that are combined into "Other" counties/districts to avoid disclosure of individual information.

Garbanzo Beans: Acreage, Yield, & Production by County & District – Montana: 2016-2017

Counties & Districts ¹	2016				2017			
	Area Planted	Area Harvested	Yield per Acre	Production	Area Planted	Area Harvested	Yield per Acre	Production
	(Acres)	(Acres)	(Pounds)	(Cwt)	(Acres)	(Acres)	(Pounds)	(Cwt)
Chouteau	15,200	15,100	1,560.0	236,000	-	-	-	-
Glacier	11,400	9,400	1,400.0	132,000	-	-	-	-
Hill	4,400	4,400	1,590.0	70,000	-	-	-	-
Pondera	3,200	3,200	1,470.0	47,000	-	-	-	-
Teton	9,800	9,800	1,490.0	146,000	-	-	-	-
Other	12,700	12,100	1,460.0	177,000	-	-	-	-
North Central	56,700	54,000	1,500.0	808,000	-	-	-	-
Other	35,900	35,800	1,790.0	640,000	-	-	-	-
Northeast	35,900	35,800	1,790.0	640,000	-	-	-	-
Cascade	-	-	-	-	9,500	8,500	900.0	76,500
Other	-	-	-	-	11,900	11,300	770.0	87,500
Central	-	-	-	-	21,400	19,800	830.0	164,000
Other	-	-	-	-	1,300	1,200	1,300.0	15,600
Southwest	-	-	-	-	1,300	1,200	1,300.0	15,600
Other Districts	6,400	6,200	1,350.0	84,000	246,300	233,000	970.0	2,264,400
Montana	99,000	96,000	1,600.0	1,532,000	269,000	254,000	960.0	2,444,000

- Represents zero.

¹ Counties with no acres planted or counties that are combined into "Other" counties/districts to avoid disclosure of individual information.

Lentils: Acreage, Yield, & Production by County & District – Montana: 2016-2017

Counties & Districts ¹	2016				2017			
	Area Planted	Area Harvested	Yield per Acre	Production	Area Planted	Area Harvested	Yield per Acre	Production
	(Acres)	(Acres)	(Pounds)	(Cwt)	(Acres)	(Acres)	(Pounds)	(Cwt)
Other	(D)	(D)	(D)	(D)	700	700	1,170.0	8,200
Northwest	(D)	(D)	(D)	(D)	700	700	1,170.0	8,200
Blaine	10,300	9,700	1,560.0	151,000	(D)	(D)	(D)	(D)
Chouteau	(D)	(D)	(D)	(D)	26,300	25,500	920.0	235,000
Glacier	11,700	11,100	1,450.0	161,000	21,800	21,600	980.0	212,000
Hill	21,400	21,300	1,850.0	394,000	56,600	54,100	900.0	488,000
Liberty	23,700	23,400	1,450.0	339,000	38,600	38,600	800.0	309,000
Phillips	11,400	11,300	1,930.0	218,000	29,200	28,300	630.0	179,000
Pondera	7,900	7,600	1,260.0	96,000	19,100	18,700	930.0	174,000
Toole	22,300	17,700	840.0	149,000	23,000	23,000	1,020.0	235,000
Other	11,300	11,300	1,500.0	170,000	39,400	37,700	580.0	217,000
North Central	120,000	113,400	1,480.0	1,678,000	254,000	247,500	830.0	2,049,000
Daniels	83,100	82,400	1,700.0	1,401,000	77,000	74,600	480.0	357,000
McCone	-	-	-	-	31,600	28,700	440.0	127,000
Richland	5,300	5,250	910.0	48,000	-	-	-	-
Roosevelt	53,900	53,700	1,390.0	749,000	66,100	50,400	540.0	274,000
Sheridan	126,500	125,000	1,410.0	1,760,000	134,500	127,400	510.0	650,000
Valley	52,700	52,700	1,600.0	844,000	63,900	48,400	490.0	237,000
Other	42,000	39,450	1,420.0	559,000	40,400	33,000	530.0	176,000
Northeast	363,500	358,500	1,500.0	5,361,000	413,500	362,500	500.0	1,821,000
Cascade	5,100	4,700	1,500.0	70,700	(D)	(D)	(D)	(D)
Fergus	3,600	3,200	1,250.0	39,900	(D)	(D)	(D)	(D)
Golden Valley	1,900	1,850	1,490.0	27,600	(D)	(D)	(D)	(D)
Other	6,700	6,550	880.0	57,800	(D)	(D)	(D)	(D)
Central	17,300	16,300	1,200.0	196,000	(D)	(D)	(D)	(D)
Other	(D)	(D)	(D)	(D)	2,000	2,000	1,420.0	28,400
Southwest	(D)	(D)	(D)	(D)	2,000	2,000	1,420.0	28,400
Other	3,900	3,900	470.0	18,300	(D)	(D)	(D)	(D)
South Central	3,900	3,900	470.0	18,300	(D)	(D)	(D)	(D)
Fallon	3,700	2,350	800.0	18,800	(D)	(D)	(D)	(D)
Other	10,800	9,750	910.0	89,200	(D)	(D)	(D)	(D)
Southeast	14,500	12,100	890.0	108,000	(D)	(D)	(D)	(D)
Other Districts	800	800	1,460.0	11,700	59,800	57,300	780.0	448,400
Montana	520,000	505,000	1,460.0	7,373,000	730,000	670,000	650.0	4,355,000

- Represents zero.

(D) Withheld to avoid disclosing data for individual operation.

¹ Counties with no acres planted or counties that are combined into "Other" counties/districts to avoid disclosure of individual information.

Potatoes: Acreage, Yield, & Production by County & District – Montana: 2016-2017

Counties & Districts ¹	2016				2017 ²			
	Area Planted	Area Harvested	Yield per Acre	Production	Area Planted	Area Harvested	Yield per Acre	Production
	(Acres)	(Acres)	(Cwt)	(Cwt)	(Acres)	(Acres)	(Cwt)	(Cwt)
Other	2,100	2,000	320.0	640,000	(NA)	(NA)	(NA)	(NA)
Northwest	2,100	2,000	320.0	640,000	(NA)	(NA)	(NA)	(NA)
Other	6,300	6,300	333.0	2,096,000	(NA)	(NA)	(NA)	(NA)
Southwest	6,300	6,300	333.0	2,096,000	(NA)	(NA)	(NA)	(NA)
Other Districts	2,700	2,700	351.0	949,000	(NA)	(NA)	(NA)	(NA)
Montana	11,100	11,000	335.0	3,685,000	11,100	11,000	340.0	3,740,000

(NA) Not available.

¹ Counties with no acres planted or counties that are combined into "Other" counties/districts to avoid disclosure of individual information.

² Estimates discontinued in 2017.

Sugar Beets: Acreage, Yield, & Production by County & District – Montana: 2016-2017

Counties & Districts ¹	2016				2017			
	Area Planted	Area Harvested	Yield per Acre	Production	Area Planted	Area Harvested	Yield per Acre	Production
	(Acres)	(Acres)	(Tons)	(Tons)	(Acres)	(Acres)	(Tons)	(Tons)
Dawson	2,600	2,500	31.8	79,500	2,200	2,200	28.2	62,000
Richland	14,200	14,100	33.5	472,000	13,700	13,700	32.8	449,000
Roosevelt	2,800	2,800	33.4	93,500	2,200	2,200	28.6	63,000
Northeast	19,600	19,400	33.2	645,000	18,100	18,100	31.7	574,000
Big Horn	8,000	7,900	39.2	310,000	8,100	8,000	33.8	270,000
Carbon	3,100	3,100	31.9	99,000	2,800	2,800	33.6	94,000
Treasure	3,400	3,400	37.6	128,000	3,200	3,200	36.3	116,000
Yellowstone	6,800	6,800	34.6	235,000	6,300	6,300	33.0	208,000
South Central	21,300	21,200	36.4	772,000	20,400	20,300	33.9	688,000
Custer	300	300	32.7	9,800	200	200	35.5	7,100
Prairie	2,400	2,400	34.7	83,200	2,200	2,100	27.9	58,500
Rosebud	2,000	2,000	38.0	76,000	2,000	2,000	34.2	68,400
Southeast	4,700	4,700	36.0	169,000	4,400	4,300	31.2	134,000
Montana	45,600	45,300	35.0	1,586,000	42,900	42,700	32.7	1,396,000

¹ Counties with no acres planted or counties that are combined into "Other" counties/districts to avoid disclosure of individual information.

Canola: Acreage, Yield, & Production by County & District – Montana: 2016-2017

Counties & Districts ¹	2016				2017			
	Area Planted	Area Harvested	Yield per Acre	Production	Area Planted	Area Harvested	Yield per Acre	Production
	(Acres)	(Acres)	(Pounds)	(Pounds)	(Acres)	(Acres)	(Pounds)	(Pounds)
Chouteau	1,400	1,400	1,140.0	1,600,000	6,500	5,600	910.0	5,085,000
Glacier	-	-	-	-	4,900	4,900	1,430.0	6,990,000
Liberty	(D)	(D)	(D)	(D)	5,100	4,800	590.0	2,815,000
Phillips	(D)	(D)	(D)	(D)	3,500	2,950	520.0	1,530,000
Pondera	4,000	3,500	2,310.0	8,100,000	9,700	9,250	1,930.0	17,870,000
Teton	1,100	1,100	1,350.0	1,490,000	3,500	3,450	2,330.0	8,045,000
Toole	3,500	3,400	1,400.0	4,760,000	7,700	7,700	1,350.0	10,360,000
Other	5,000	5,000	1,760.0	8,790,000	13,800	13,150	640.0	8,421,000
North Central	15,000	14,400	1,720.0	24,740,000	54,700	51,800	1,180.0	61,116,000
Daniels	(D)	(D)	(D)	(D)	11,400	9,700	380.0	3,652,000
Dawson	(D)	(D)	(D)	(D)	2,700	2,300	550.0	1,265,000
Richland	(D)	(D)	(D)	(D)	5,500	5,500	960.0	5,285,000
Roosevelt	11,500	11,100	1,850.0	20,554,000	21,900	17,800	510.0	8,989,000
Valley	12,500	12,500	1,590.0	19,889,000	28,100	22,600	610.0	13,774,000
Other	11,500	11,500	1,470.0	16,941,000	9,100	6,800	440.0	2,971,000
Northeast	35,500	35,100	1,630.0	57,384,000	78,700	64,700	560.0	35,936,000
Fergus	(D)	(D)	(D)	(D)	1,500	1,500	810.0	1,210,000
Other	2,100	2,000	1,380.0	2,761,000	4,700	4,600	870.0	3,980,000
Central	2,100	2,000	1,380.0	2,761,000	6,200	6,100	850.0	5,190,000
Other Districts ..	9,400	8,500	1,800.0	15,315,000	15,400	14,400	1,180.0	16,948,000
Montana	62,000	60,000	1,670.0	100,200,000	155,000	137,000	870.0	119,190,000

- Represents zero.

(D) Withheld to avoid disclosing data for individual operations.

¹ Counties with no acres planted or counties that are combined into "Other" counties/districts to avoid disclosure of individual information.

Alfalfa Hay: Acreage, Yield, & Production by County & District – Montana: 2016-2017

Counties & Districts ¹	2016			2017		
	Area Harvested	Yield per Acre	Production	Area Harvested	Yield per Acre	Production
	(Acres)	(Tons)	(Tons)	(Acres)	(Tons)	(Tons)
Deer Lodge	5,400	3.35	18,000	4,400	3.70	16,300
Flathead	15,500	3.00	46,800	14,700	3.20	46,900
Granite	8,000	3.10	24,600	7,000	3.25	22,800
Lake	39,000	2.90	113,500	38,000	3.30	125,500
Lincoln	2,300	2.50	5,700	2,500	1.90	4,700
Mineral	1,000	1.90	1,900	1,200	1.35	1,600
Missoula	7,200	2.15	15,500	5,000	2.55	12,800
Powell	15,500	2.95	45,500	15,500	3.50	54,300
Ravalli	11,600	3.45	39,900	9,200	4.45	41,000
Sanders	11,500	2.75	31,600	13,500	2.80	38,100
Northwest	117,000	2.95	343,000	111,000	3.30	364,000
Blaine	59,000	1.95	116,000	39,000	1.70	66,100
Chouteau	21,000	1.35	28,800	21,000	1.60	33,100
Glacier	31,000	1.65	51,000	31,000	1.65	51,600
Hill	14,000	1.55	22,000	14,000	1.45	20,200
Liberty	10,000	1.65	16,500	-	-	-
Phillips	53,000	1.55	82,100	34,000	1.70	58,000
Pondera	30,000	2.55	76,000	27,000	2.90	78,100
Teton	42,000	2.50	105,500	-	-	-
Toole	20,000	1.30	26,100	14,000	1.60	22,200
Other	-	-	-	37,000	2.15	78,700
North Central	280,000	1.85	524,000	217,000	1.90	408,000
Daniels	20,000	2.35	47,000	-	-	-
Dawson	27,000	1.80	49,000	-	-	-
Garfield	35,000	1.05	37,000	24,000	0.75	18,500
McCone	23,000	2.00	45,500	-	-	-
Richland	45,500	1.55	70,000	38,000	1.70	65,500
Roosevelt	41,000	1.65	68,000	-	-	-
Sheridan	20,000	1.40	27,500	20,000	0.95	18,800
Valley	75,500	2.25	169,000	-	-	-
Other	-	-	-	144,000	1.75	255,200
Northeast	287,000	1.80	513,000	226,000	1.60	358,000
Broadwater	24,500	4.70	115,000	22,000	4.50	99,000
Cascade	62,000	2.35	145,000	63,000	1.75	111,000
Fergus	151,500	1.45	218,000	148,800	1.40	206,200
Golden Valley	17,000	2.10	35,500	22,800	2.00	45,900
Judith Basin	89,500	1.35	119,000	83,600	1.50	124,200
Lewis & Clark	24,000	3.20	77,000	21,100	3.30	70,000
Meagher	20,500	3.00	62,000	17,700	3.25	57,800
Musselshell	30,500	1.75	53,000	25,000	1.75	43,200
Petroleum	13,500	1.65	22,500	14,000	1.90	26,600
Wheatland	30,000	1.25	38,000	33,000	1.45	47,100
Central	463,000	1.90	885,000	451,000	1.85	831,000
Beaverhead	21,000	3.60	76,000	25,800	3.85	99,400
Gallatin	38,000	3.25	124,000	-	-	-
Jefferson	11,000	3.20	35,000	9,800	3.05	30,100
Madison	37,000	3.85	142,000	37,000	4.05	149,900
Silver Bow	2,000	4.00	8,000	-	-	-
Other	-	-	-	38,400	3.95	151,600
Southwest	109,000	3.55	385,000	111,000	3.90	431,000
Big Horn	43,000	2.65	113,000	40,000	3.40	135,900
Carbon	28,500	3.95	112,000	-	-	-
Park	32,000	2.65	85,500	37,000	2.40	88,600
Stillwater	49,000	1.30	63,000	46,500	1.60	74,200
Sweet Grass	19,500	1.60	31,000	19,000	1.90	35,700
Treasure	7,500	4.15	31,000	8,000	3.50	28,000
Yellowstone	58,500	1.05	60,500	-	-	-
Other	-	-	-	65,500	2.95	192,600
South Central	238,000	2.10	496,000	216,000	2.55	555,000
Carter	36,500	0.75	27,000	61,600	0.95	57,600
Custer	46,000	3.15	146,000	34,500	2.55	88,600
Fallon	65,500	0.75	49,500	-	-	-
Powder River	62,000	1.50	92,500	64,500	1.20	77,700
Prairie	24,000	1.60	38,000	-	-	-
Rosebud	48,000	1.65	79,500	40,000	2.90	116,500
Wibaux	24,000	0.90	21,500	15,000	0.80	12,200
Other	-	-	-	52,400	1.15	60,400
Southeast	306,000	1.50	454,000	268,000	1.55	413,000
Montana	1,800,000	2.00	3,600,000	1,600,000	2.10	3,360,000

- Represents zero.

¹ Counties with no acres planted or counties that are combined into "Other" counties/districts to avoid disclosure of individual information.

Other Hay: Acreage, Yield, & Production by County & District – Montana: 2016-2017

Counties & Districts ¹	2016			2017		
	Area Harvested	Yield per Acre	Production	Area Harvested	Yield per Acre	Production
	(Acres)	(Tons)	(Tons)	(Acres)	(Tons)	(Tons)
Deer Lodge	4,700	2.00	9,500	5,500	2.55	14,100
Flathead	7,600	1.95	15,000	-	-	-
Granite	11,000	2.20	24,000	12,000	2.40	29,000
Lake	12,600	1.80	22,500	-	-	-
Lincoln	2,100	1.75	3,700	2,000	1.50	3,000
Mineral	1,000	1.20	1,200	1,000	1.10	1,100
Missoula	5,400	2.05	11,000	7,500	2.15	16,200
Powell	23,500	1.90	44,500	28,000	2.20	61,100
Ravalli	14,000	2.05	28,600	18,000	2.00	36,100
Sanders	9,100	1.10	10,000	8,000	1.50	12,100
Other	-	-	-	22,000	1.95	43,300
Northwest	91,000	1.85	170,000	104,000	2.10	216,000
Blaine	22,200	1.95	43,100	22,000	1.45	32,300
Chouteau	16,500	1.50	25,000	-	-	-
Glacier	9,400	1.40	13,100	13,000	1.75	22,500
Hill	10,800	2.10	22,800	13,500	1.40	18,700
Liberty	4,200	1.85	7,800	5,400	1.40	7,600
Phillips	38,000	1.95	74,000	43,000	1.45	63,300
Pondera	6,300	2.05	12,900	6,000	1.90	11,500
Teton	21,600	2.40	52,300	-	-	-
Toole	7,000	1.30	9,000	7,000	0.85	6,100
Other	-	-	-	42,000	1.80	75,500
North Central	136,000	1.90	260,000	151,900	1.55	237,500
Daniels	-	-	-	9,000	0.85	7,800
Dawson	28,000	1.35	38,000	28,000	0.80	22,300
Garfield	39,500	1.30	51,200	-	-	-
McCone	34,000	1.50	51,500	-	-	-
Richland	28,000	1.40	39,100	30,000	0.85	26,000
Sheridan	15,000	1.70	25,200	-	-	-
Valley	29,500	2.35	69,200	-	-	-
Other	37,000	1.65	60,800	142,000	1.15	161,900
Northeast	211,000	1.60	335,000	209,000	1.05	218,000
Broadwater	9,500	3.05	29,000	8,500	2.35	20,100
Cascade	19,500	1.95	38,500	20,000	1.30	26,300
Fergus	30,000	1.65	50,000	32,000	1.15	36,000
Golden Valley	6,800	1.20	8,000	6,700	2.10	14,200
Judith Basin	12,000	2.10	25,000	13,300	1.45	19,500
Lewis & Clark	7,700	1.95	15,000	8,500	1.70	14,400
Meagher	21,000	2.20	46,100	22,800	1.80	41,200
Musselshell	8,100	1.60	13,000	-	-	-
Petroleum	5,500	1.45	8,100	-	-	-
Wheatland	6,900	1.80	12,300	8,500	1.10	9,500
Other	-	-	-	15,200	1.10	16,800
Central	127,000	1.95	245,000	135,500	1.45	198,000
Beaverhead	50,000	2.45	123,600	62,500	2.70	169,000
Jefferson	8,800	2.00	17,800	11,000	1.95	21,600
Madison	22,500	2.45	55,300	-	-	-
Silver Bow	-	-	-	2,500	2.65	6,600
Other	17,700	2.15	38,300	49,000	2.40	118,800
Southwest	99,000	2.35	235,000	125,000	2.55	316,000
Big Horn	11,000	2.25	25,000	13,800	1.60	22,000
Carbon	19,500	2.30	45,000	21,000	2.70	56,200
Park	7,000	1.65	11,500	10,000	1.95	19,600
Stillwater	13,000	1.45	19,000	-	-	-
Sweet Grass	9,900	1.80	18,000	9,000	2.00	18,100
Treasure	-	-	-	4,200	1.70	7,200
Other	16,600	1.90	31,500	28,000	2.05	57,400
South Central	77,000	1.95	150,000	86,000	2.10	180,500
Carter	18,200	1.00	18,000	35,000	1.10	38,300
Custer	19,000	1.65	31,000	-	-	-
Fallon	13,000	1.25	16,000	18,800	1.25	23,500
Powder River	15,200	1.05	16,000	20,000	0.75	14,500
Prairie	11,900	1.30	15,700	13,000	1.55	19,900
Rosebud	13,800	1.60	22,000	17,000	1.45	24,300
Wibaux	17,900	0.90	16,300	-	-	-
Other	-	-	-	34,800	0.95	33,500
Southeast	109,000	1.25	135,000	138,600	1.10	154,000
Montana	850,000	1.80	1,530,000	950,000	1.60	1,520,000

- Represents zero.

¹ Counties with no acres planted or counties that are combined into "Other" counties/districts to avoid disclosure of individual information.

Cattle & Calves: Number by Class & Calf Crop – Montana: January 1, 2014-2018

Class	2014	2015	2016	2017	2018	
	(Head)	(Head)	(Head)	(Head)	(Head)	
All Cattle & Calves	2,550,000	2,500,000	2,650,000	2,650,000	2,550,000	
Cows & Heifers, That Have Calved	1,490,000	1,510,000	1,500,000	1,500,000	1,510,000	
Beef Cows	1,476,000	1,496,000	1,486,000	1,486,000	1,497,000	
Milk Cows	14,000	14,000	14,000	14,000	13,000	
Calves, Under 500 Pounds	90,000	75,000	125,000	130,000	105,000	
Steers, 500 Pounds & Over	220,000	175,000	230,000	230,000	210,000	
Heifers, 500 Pounds & Over						
Beef Cow Replacements	430,000	435,000	420,000	425,000	390,000	
Milk Cow Replacements	9,000	7,000	8,000	9,000	7,000	
Other Heifers	211,000	198,000	262,000	256,000	223,000	
Bulls, 500 Pounds & Over	100,000	100,000	105,000	100,000	105,000	
Cattle on Feed	54,000	40,000	50,000	45,000	45,000	
Calf Crop	1,470,000	1,470,000	1,450,000	1,480,000	(1)	
	Unit	Value of Inventory ²				
Value per Head	(Dollars)	1,530	2,040	1,620	1,230	1,350
Value of Inventory	(Dollars)	3,901,500	5,100,000	4,293,000	3,259,500	3,442,500

¹ Data available 2019

² Value of all cattle & calves.

Calf Crop & Disposition – Montana: 2008-2017

Year	Calves Born	Inshipments	Marketings ¹		On Farm Slaughter ²	Death Losses	
			Cattle	Calves		Cattle	Calves
	(1,000 Head)	(1,000 Head)	(1,000 Head)	(1,000 Head)	(1,000 Head)	(1,000 Head)	(1,000 Head)
2008	1,490	129	1,255	240.0	5.0	21	48
2009	1,480	105	1,345	245.0	5.0	27	63
2010	1,490	106	1,307	255.0	4.0	23	57
2011	1,470	110	1,278	211.0	4.0	25	62
2012	1,500	150	1,257	205.0	2.0	28	58
2013	1,470	148	1,367	210.0	2.0	29	60
2014	1,470	169	1,376	220.0	3.0	29	61
2015	1,470	160	1,239	151.0	2.5	26	62
2016	1,450	140	1,360	150.5	2.0	22	55
2017	1,480	113	1,445	160.5	3.0	25	60

¹ Marketings exclude interfarm sales.

² On farm slaughter excludes animals' custom slaughtered in commercial establishments for farmers.

Grazing Fees: Annual Average Rates – Montana: 2008-2017

Year	Per Animal Unit ¹	Cow-Calf	Per Head
	(Dollars per Month)	(Dollars per Month)	(Dollars per Month)
2008	18.10	20.00	19.80
2009	18.00	20.20	18.90
2010	18.40	20.20	19.30
2011	19.40	21.60	19.50
2012	20.50	23.60	20.30
2013	21.00	23.60	20.80
2014	23.00	26.00	23.00
2015	23.00	26.00	23.00
2016	24.00	26.00	24.00
2017	24.50	27.00	24.00

¹ Includes animal unit plus cow-calf rate converted to animal unit (AUM) using (1 aum=cow-calf * 0.833)

All Cattle & Calves: Production & Income – Montana: 2008-2017

Year	Production ¹	Marketings ²	Value of Production	Cash Receipts ³	Value of Home Consumption	Gross Income
	(1,000 Pounds)	(1,000 Pounds)	(1,000 Dollars)	(1,000 Dollars)	(1,000 Dollars)	(1,000 Dollars)
2008	976,102	1,083,000	875,617	970,845	10,174	981,019
2009	961,047	1,182,250	773,385	952,014	9,283	961,297
2010	1,110,597	1,154,750	1,041,683	1,083,920	11,697	1,095,617
2011	1,020,050	1,110,500	1,107,700	1,207,605	16,045	1,223,650
2012	1,053,913	1,129,750	1,263,600	1,349,950	12,205	1,362,155
2013	1,113,210	1,243,700	1,358,818	1,523,321	12,425	1,535,746
2014	1,107,994	1,265,450	1,750,836	1,984,463	14,643	1,999,106
2015	1,119,577	1,121,650	1,659,653	1,639,423	12,119	1,651,542
2016	1,122,762	1,224,500	1,295,999	1,412,058	9,264	1,421,322
2017	1,150,243	1,303,358	1,314,684	1,492,260	13,997	1,506,257

¹ Adjustments made for changes in inventory and inshipments.

² Excludes custom slaughter for use on farms where produced and inter-farm sales within the state.

³ Receipts from marketings and sale of farms slaughter.

Milk & Cream: Marketings, Used on Farm, Income, & Value – Montana: 2013-2017

Unit	2013	2014	2015	2016	2017
Combined Marketings of Milk & Cream					
Milk Sold (Million Pounds)	293	296	294	290	283
Average Price					
Per 100 Pounds of Milk ¹ (Dollars)	18.70	22.00	14.90	15.80	17.50
Per Pound of Milkfat (Dollars)	5.01	5.85	4.01	4.24	4.67
Value of Milk Marketings (1,000 Dollars)	54,791	65,120	43,806	45,820	49,525
Used for Milk, Cream, & Butter by Producers					
Milk Utilized (Million Pounds)	2.00	2.00	2.00	2.00	2.00
Value (Dollars)	374,000	440,000	298,000	316,000	350,000
Milk Used on Farm for Feed .. (Million Pounds)	3.00	3.00	3.00	3.00	3.00
Gross Producer Income ² (1,000 Dollars)	55,165	65,560	44,104	46,136	49,875
Value of Milk Produced ³ (1,000 Dollars)	55,726	66,220	44,551	46,610	50,400

¹ Average price for marketing year.

² Cash receipts from marketings of milk & cream, plus value of milk used for home consumption.

³ Includes value of milk fed to calves.

Sheep & Lamb: Lamb Crop, Farm Slaughter, & Death Loss – Montana: 2009-2018

Year	Ewes 1 Year & Older January 1	Lambs per 100 Ewes January 1	Lamb Crop ¹	Farm Slaughter ²	Deaths	
					Sheep	Lambs
	(Head)	(Number)	(Head)	(Head)	(Head)	(Head)
2009	180,000	131	235,000	2,000	15,000	20,000
2010	185,000	119	220,000	1,500	13,000	17,000
2011	170,000	121	205,000	1,500	12,000	16,000
2012	165,000	127	210,000	1,500	12,000	16,000
2013	155,000	129	200,000	1,500	11,000	16,000
2014	155,000	129	200,000	1,500	12,000	15,000
2015	153,000	124	190,000	1,500	11,000	16,000
2016	159,000	119	190,000	1,900	11,000	16,000
2017	159,000	119	190,000	1,900	11,000	16,000
2018	150,000	(3)	(3)	(3)	(3)	(3)

¹ Lamb crop is defined as lambs born in the eastern states & lambs docked or branded in the western states.

² Excludes custom slaughter for farmers at commercial establishments.

³ Data not available till January, 2019.

Wool: Production, Price, & Value – Montana: 2008-2017

Year	Sheep Shorn	Weight per Fleece	Production	Price per Pound	Value of Production ¹
	(1,000 Head)	(Pounds)	(1000 Pounds)	(Dollars)	(1,000 Dollars)
2008	230.0	9.3	2,150	1.40	3,010
2009	230.0	9.3	2,150	1.10	2,365
2010	215.0	9.3	2,000	1.60	3,200
2011	200.0	9.3	1,850	2.40	4,440
2012	200.0	9.0	1,790	2.10	3,759
2013	200.0	8.9	1,770	2.20	3,894
2014	185.0	9.0	1,660	2.05	3,403
2015	205.0	9.0	1,840	1.90	3,496
2016	200.0	9.0	1,800	1.90	3,420
2017	195.0	9.0	1,750	1.90	3,325

¹ Production multiplied by marketing year average price.

Hogs & Pigs: Total Breeding & Market Inventory, Farrowings, Pigs per Litter, Pig Crop, & Marketings – Montana: December 1, 2008-2017

[Farrowings, Pigs per Litter, Pig Crop & Marketings for the Year, December 1, previous year, through November 30.]

Year	Inventory			Sows Farrowing	Pigs per Litter	Pig Crop	Marketings ¹
	Total	Breeding	Market				
	(1,000 Head)	(1,000 Head)	(1,000 Head)	(1,000 Head)	(Head)	(1,000 Head)	(1,000 Head)
2008	175	22	153	37	10.16	376.00	387.8
2009	175	23	152	43	10.14	431.00	421.0
2010	180	23	157	45	9.91	441.00	429.0
2011	180	22	158	43	10.28	437.00	432.1
2012	175	22	153	44	10.39	452.00	447.8
2013	166	24	142	45	10.27	462.00	464.2
2014	176	24	152	47	10.34	481.00	491.3
2015	175	24	151	46	10.73	488.00	480.0
2016	175	24	151	47	10.96	515.00	507.5
2017	179	25	154	48	10.99	522.00	507.5

¹ Includes custom slaughter for use on farms where produced and state outshipments, but excludes interfarm sales within the state.

Hogs & Pigs: Annual Farrowings & Disposition – Montana: 2008-2017

Year	Annual Farrowings ¹			Inshipments	Marketings ²	On Farm Slaughter ³	Death Losses
	Sows Farrowed	Pigs per Litter	Pig Crop				
	(Head)	(Head)	(Head)	(Head)	(Head)	(Head)	(Head)
2008	37,000	10.16	376,000	29,000	387,800	2,000	20,200
2009	42,500	10.14	431,000	11,000	421,000	1,900	19,100
2010	44,500	9.91	441,000	13,000	429,000	2,800	17,200
2011	42,500	10.28	437,000	15,000	432,100	2,500	17,400
2012	43,500	10.39	452,000	12,000	447,800	2,100	19,100
2013	45,000	10.27	462,000	12,000	464,200	2,000	16,800
2014	46,500	10.34	481,000	38,500	491,300	2,000	16,200
2015	45,500	10.73	488,000	6,000	480,000	2,000	13,000
2016	47,000	10.96	515,000	10,000	507,500	2,000	15,500
2017	47,500	10.99	522,000	5,000	507,500	2,000	13,500

¹ Annual farrowing refers to the December-November marketing year.

² Marketings include animals custom slaughtered in commercial establishments for use on farms where produced.

³ On farm slaughter excludes animals' custom slaughtered in commercial establishments for farmers.

Hogs & Pigs: Production, Marketings, & Income – Montana: 2008-2017

[Dollar values based on data received from U. S. Department of Agriculture's Agricultural Marketing Service]

Year	Production ¹	Marketings ²	Value of Production ³	Cash Receipts ^{3 4}	Value of Home Consumption	Gross Income
	(1,000 Pounds)	(1,000 Pounds)	(1,000 Dollars)	(1,000 Dollars)	(1,000 Dollars)	(1,000 Dollars)
2008	80,119	86,558	35,785	42,834	490	43,324
2009	78,601	80,750	33,794	36,502	391	36,893
2010	79,932	81,275	43,709	46,771	612	47,383
2011	77,175	80,305	54,381	58,889	612	59,501
2012	81,659	84,455	58,332	60,486	485	60,971
2013	84,479	87,038	61,604	63,231	481	63,712
2014	83,619	92,194	71,353	78,079	533	78,612
2015	95,693	95,985	59,652	59,623	387	60,010
2016	79,697	81,763	48,482	49,321	358	49,679
2017	86,586	86,298	54,142	53,800	503	54,303

¹ Adjustments made for changes in inventory and for inshipments.

² Excludes custom slaughter for use on farms where produced and interfarm sales within the State.

³ Includes allowance for higher average price of State inshipments and outshipments of feeder pigs.

⁴ Receipts from marketings and sale of farm slaughter.

Chickens: Inventory by Class & Total Value – Montana: December 1, 2008-2017

Year	All Layers (1,000 Head)	Pullets (1,000 Head)	All Chickens		
			Number (1,000 Head)	Value per Head (Dollars)	Total Value (1,000 Dollars)
2008	350	159	510	3.80	1,938
2009	375	165	540	4.10	2,214
2010	375	160	535	4.80	2,568
2011	380	165	545	4.00	2,180
2012	464	210	674	6.40	4,314
2013	455	184	639	4.70	3,003
2014	458	162	620	5.00	3,100
2015	439	150	589	8.50	5,007
2016	412	126	538	5.70	3,067
2017	941	323	1,264	5.60	7,078

Eggs: Production & Income – Montana: 2008-2017

Year ¹	Average Number of Layers (Thousand)	Eggs per Layer (Number)	Total Produced (Million)	Gross Income (Dollars 1,000)
2008	355	324	115	9,567
2009	351	305	107	6,890
2010	375	317	119	6,619
2011	375	317	119	8,682
2012	384	313	120	8,642
2013	436	328	143	10,705
2014	454	315	143	12,965
2015	456	312	142	22,500
2016	436	312	136	7,870
2017	523	294	154	11,192

¹ December of the preceding year.

Honey: Number of Colonies, Yield, Production, Stocks, Price, & Value – Montana: 2008-2017

[Producers with 5 or more colonies.]

Year	Honey Producing Colonies ¹ (Number)	Yield per Colony (Pounds)	Production (1,000 Pounds)	Stocks December 15 ² (Pounds)	Average Price per Pound ³ (Dollars)	Value of Production ⁴ (1,000 Dollars)
2008	134,000	70	9,380	4,596,000	1.37	12,851
2009	146,000	70	10,220	3,577,000	1.46	14,921
2010	157,000	74	11,618	2,905,000	1.58	18,356
2011	145,000	92	13,340	3,202,000	1.70	22,678
2012	145,000	52	7,540	2,413,000	1.95	14,703
2013	159,000	94	14,946	5,231,000	2.09	31,237
2014	162,000	88	14,256	5,132,000	2.09	29,795
2015	146,000	83	12,118	3,757,000	1.94	23,509
2016	159,000	77	12,243	3,183,000	1.77	21,670
2017	145,000	72	10,440	2,506,000	2.30	24,012

¹ Honey producing colonies are the maximum number of colonies from which honey was taken during the year. It is possible to take honey from colonies which did not survive the entire year.

² Stocks held by producers.

³ Average price per pound based on expanded sales.

⁴ Value of production is equal to production multiplied by average price per pound.

Commercial Red Meat Production by Month – Montana: 2008-2017

Year	Jan	Feb	Mar	Apr	May	Jun	Jul	Aug	Sep	Oct	Nov	Dec
	(Million Pounds)	(Million Pounds)	(Million Pounds)	(Million Pounds)	(Million Pounds)	(Million Pounds)	(Million Pounds)	(Million Pounds)	(Million Pounds)	(Million Pounds)	(Million Pounds)	(Million Pounds)
2008	1.0	1.0	0.9	1.8	1.7	1.7	1.3	1.3	1.2	1.6	1.5	1.6
2009	1.0	0.9	0.9	1.7	1.6	1.7	1.3	1.3	1.3	2.2	2.1	2.3
2010	1.0	0.9	0.9	1.6	1.5	1.7	1.4	1.7	1.4	1.8	1.7	1.7
2011	0.8	0.8	0.8	1.6	1.5	1.7	1.0	1.2	1.1	1.8	1.8	1.8
2012	0.8	0.7	0.7	1.7	1.5	1.8	1.1	1.3	1.0	2.0	1.8	1.8
2013	0.9	0.8	0.8	1.6	1.5	1.7	1.2	1.3	1.0	2.0	1.8	1.9
2014	0.8	0.9	1.3	1.4	1.3	1.5	1.8	1.3	1.5	2.0	1.5	1.3
2015	0.6	0.7	1.8	1.2	1.6	1.3	1.1	1.1	1.9	1.4	2.5	1.1
2016	0.9	1.1	2.0	1.1	1.6	1.4	0.7	2.0	2.8	1.9	1.2	1.1
2017	0.8	1.0	2.5	2.0	2.8	1.8	1.0	1.5	3.4	2.8	1.5	1.3

Monthly Slaughter by Class – Montana: 2008-2017

Cattle & Calves

Year	Jan	Feb	Mar	Apr	May	Jun	Jul	Aug	Sep	Oct	Nov	Dec
	(1,000 Head)	(1,000 Head)	(1,000 Head)	(1,000 Head)	(1,000 Head)	(1,000 Head)	(1,000 Head)	(1,000 Head)	(1,000 Head)	(1,000 Head)	(1,000 Head)	(1,000 Head)
2008	1.2	1.2	1.1	2.4	2.1	2.1	1.4	1.4	1.4	2.0	1.9	2.1
2009	1.3	1.2	1.1	2.2	2.1	2.2	1.5	1.4	1.4	2.8	2.7	2.9
2010	1.2	1.2	1.1	2.0	2.0	2.1	1.6	1.9	1.7	2.2	2.1	2.2
2011	1.0	0.9	0.9	2.1	2.0	2.2	1.2	1.3	1.3	2.4	2.2	2.3
2012	1.0	0.9	0.9	2.1	2.1	2.3	1.3	1.4	1.1	2.6	2.2	2.3
2013	1.1	1.0	1.0	2.1	2.1	2.2	1.3	1.4	1.1	2.6	2.3	2.5
2014	1.0	1.1	1.8	1.8	1.8	2.0	2.2	1.4	1.9	2.6	1.9	1.7
2015	0.8	0.8	2.3	1.5	2.1	1.6	1.2	1.2	2.1	1.8	3.1	1.3
2016	1.2	1.4	2.6	1.4	2.0	1.6	0.7	2.2	3.3	2.4	1.4	1.4
2017	0.9	1.1	2.7	2.1	3.0	1.9	0.9	1.3	3.4	2.8	1.5	1.3

Sheep & Lambs

2008	0.3	0.2	0.3	0.3	0.3	0.3	0.3	0.4	0.5	0.5	0.4	0.4
2009	0.2	0.2	0.2	0.3	0.3	0.3	0.3	0.4	0.4	0.6	0.5	0.5
2010	0.2	0.2	0.2	0.2	0.3	0.3	0.3	0.4	0.4	0.5	0.4	0.4
2011	0.2	0.1	0.2	0.2	0.3	0.3	0.2	0.4	0.4	0.6	0.5	0.4
2012	0.2	0.2	0.1	0.2	0.3	0.3	0.3	0.3	0.5	0.5	0.5	0.5
2013	0.3	0.2	0.4	0.2	0.3	0.2	0.4	0.5	0.5	0.6	0.5	0.5
2014	0.2	0.3	0.2	0.4	0.3	0.5	0.5	0.4	0.4	0.7	0.5	0.4
2015	0.2	0.2	0.6	0.4	0.3	0.5	0.4	0.5	0.5	0.4	0.6	0.5
2016	0.2	0.3	0.6	0.4	0.4	0.6	0.3	0.6	0.6	0.5	0.5	0.4
2017	0.2	0.2	0.4	0.4	0.6	0.7	0.3	0.5	0.6	0.6	0.3	0.4

Hogs & Pigs

2008	0.8	0.8	0.7	1.2	1.1	1.3	1.5	1.5	1.2	1.1	1.1	1.2
2009	0.7	0.7	0.6	1.0	1.1	1.2	1.3	1.5	1.2	1.3	1.3	1.4
2010	0.7	0.7	0.7	1.0	1.0	1.1	1.4	1.6	1.3	1.2	1.3	1.4
2011	0.7	0.7	0.7	1.1	1.1	1.2	1.2	1.5	1.2	1.2	1.3	1.4
2012	0.7	0.7	0.7	1.1	1.1	1.3	1.3	1.4	1.4	1.6	1.7	1.8
2013	0.8	0.7	0.8	1.1	1.1	1.2	1.4	1.5	1.5	1.4	1.5	1.7
2014	0.6	0.8	0.7	1.5	1.1	0.9	1.7	1.6	1.4	1.7	1.1	1.2
2015	0.6	0.7	1.8	1.0	1.2	1.1	1.3	1.6	2.6	1.1	2.8	1.2
2016	0.9	0.9	1.9	1.1	1.3	1.3	1.1	2.6	3.2	1.6	1.2	0.9
2017	0.6	0.9	1.9	1.5	1.8	1.2	1.2	1.9	3.0	2.1	1.6	1.1

All Cattle & Calves, Beef Cows & Heifers That Have Calved, Inventory by County – Montana: January 1, 2016-2018

County & Districts ¹	All Cattle & Calves			Beef Cows & Heifers That Have Calved		
	(2016)	(2017)	(2018)	(2016)	(2017)	(2018)
Deer Lodge	5,300	5,300	5,100	(D)	(D)	(D)
Flathead	8,500	8,500	8,200	(D)	(D)	(D)
Granite	19,500	19,500	18,800	(D)	(D)	(D)
Lake	42,000	42,000	41,000	26,500	26,500	27,000
Lincoln	2,400	2,400	2,300	1,500	1,500	1,500
Mineral	300	300	300	(D)	(D)	(D)
Missoula	10,800	10,800	10,400	5,200	5,200	5,200
Powell	39,500	39,500	38,000	(D)	(D)	(D)
Ravalli	32,500	32,500	31,000	15,200	15,200	15,200
Sanders	13,100	13,100	12,600	9,400	9,400	9,500
Northwest						
Blaine	69,000	69,000	67,000	45,000	45,000	45,500
Chouteau	37,500	37,500	36,000	24,500	24,500	25,000
Glacier	48,000	48,000	46,000	30,000	30,000	30,000
Hill	24,000	24,000	23,000	(D)	(D)	(D)
Liberty	15,700	15,700	15,100	10,300	10,300	10,300
Phillips	86,000	86,000	82,000	53,000	53,000	54,000
Pondera	26,500	26,500	25,500	17,600	17,600	17,700
Teton	56,000	56,000	54,000	23,500	23,500	24,000
Toole	21,500	21,500	21,000	13,100	13,100	13,200
North Central						
Daniels	14,500	14,500	13,900	9,600	9,600	9,600
Dawson	41,000	41,000	39,000	25,500	25,500	25,500
Garfield	87,000	87,000	84,000	53,000	53,000	53,000
McCone	37,500	37,500	36,000	(D)	(D)	(D)
Richland	68,000	68,000	66,000	35,000	35,000	35,500
Roosevelt	23,000	23,000	22,000	(D)	(D)	(D)
Sheridan	27,500	27,500	26,500	(D)	(D)	(D)
Valley	66,000	66,000	63,000	(D)	(D)	(D)
Northeast						
Broadwater	24,000	24,000	23,000	(D)	(D)	(D)
Cascade	63,000	63,000	60,000	38,000	38,000	38,000
Fergus	99,000	99,000	95,000	65,000	65,000	66,000
Golden Valley	22,500	22,500	22,000	(D)	(D)	(D)
Judith Basin	84,000	84,000	81,000	(D)	(D)	(D)
Lewis & Clark	38,500	38,500	37,000	24,500	24,500	25,000
Meagher	42,000	42,000	40,500	(D)	(D)	(D)
Musselshell	34,500	34,500	33,000	22,000	22,000	22,500
Petroleum	33,000	33,000	32,000	19,100	19,100	19,200
Wheatland	41,000	41,000	40,000	(D)	(D)	(D)
Central						
Beaverhead	155,000	155,000	150,000	80,000	80,000	80,000
Gallatin	50,000	50,000	48,000	19,000	19,000	19,200
Jefferson	27,500	27,500	26,500	17,100	17,100	16,700
Madison	75,000	75,000	72,000	47,000	47,000	47,000
Silver Bow	4,900	4,900	4,800	(D)	(D)	(D)
Southwest						
Big Horn	76,000	76,000	73,000	49,000	49,000	49,500
Carbon	73,000	73,000	70,000	35,500	35,500	36,000
Park	44,500	44,500	42,500	30,500	30,500	30,500
Stillwater	43,000	43,000	41,500	23,500	23,500	23,500
Sweet Grass	38,000	38,000	37,000	26,000	26,000	25,500
Treasure	28,000	28,000	27,000	13,100	13,100	13,200
Yellowstone	120,000	120,000	115,000	(D)	(D)	(D)
South Central						
Carter	95,000	95,000	91,000	53,000	53,000	53,000
Custer	115,000	115,000	110,000	(D)	(D)	(D)
Fallon	56,000	56,000	54,000	30,500	30,500	30,500
Powder River	91,000	91,000	88,000	53,000	53,000	54,000
Prairie	34,500	34,500	33,000	21,000	21,000	21,500
Rosebud	95,000	95,000	92,000	51,000	51,000	51,000
Wibaux	24,500	24,500	23,500	(D)	(D)	(D)
Southeast						
Other Counties	-	-	-	370,300	370,300	373,500
Montana	2,650,000	2,650,000	2,550,000	1,486,000	1,486,000	1,497,000

- Represents zero.

(D) Withheld to avoid disclosing data for individual operations.

¹ Counties with missing data are included in "Other" counties/districts to avoid disclosure of individual information.

Milk Cows & Heifers That Have Calved, Inventory by County – Montana: January 1, 2016-2018

County & Districts ¹	Milk Cows & Heifers That Have Calved		
	(2016)	(2017)	(2018)
Deer Lodge	(D)	(D)	(D)
Flathead	(D)	(D)	(D)
Lake	300	300	300
Lincoln	(D)	(D)	(D)
Missoula	(D)	(D)	(D)
Powell	(D)	(D)	(D)
Ravalli	900	900	900
Sanders	(D)	(D)	(D)
Northwest			
Blaine	100	100	100
Glacier	1,100	1,100	1,000
Hill	(D)	(D)	(D)
Liberty	500	500	500
Phillips	(D)	(D)	(D)
Pondera	1,000	1,000	800
Teton	400	200	300
Toole	300	500	400
North Central			
Dawson	(D)	(D)	(D)
Garfield	(D)	-	(D)
Richland	(D)	(D)	(D)
Northeast			
Broadwater	(D)	(D)	(D)
Cascade	1,200	1,300	1,100
Fergus	400	500	400
Golden Valley	(D)	(D)	(D)
Judith Basin	(D)	(D)	(D)
Lewis & Clark	100	100	100
Meagher	(D)	(D)	(D)
Musselshell	(D)	(D)	-
Petroleum	(D)	(D)	(D)
Wheatland	(D)	(D)	(D)
Central			
Beaverhead	(D)	(D)	(D)
Gallatin	4,500	4,300	4,100
Madison	(D)	(D)	(D)
Silver Bow	(D)	(D)	(D)
Southwest			
Carbon	(D)	(D)	(D)
Park	100	100	100
Stillwater	(D)	(D)	(D)
Sweet Grass	(D)	(D)	(D)
Yellowstone	(D)	(D)	(D)
South Central			
Carter	(D)	(D)	(D)
Custer	(D)	(D)	(D)
Powder River	(D)	(D)	(D)
Prairie	(D)	(D)	(D)
Rosebud	(D)	(D)	-
Southeast			
Other Counties	3,100	3,100	2,900
Montana	14,000	14,000	13,000

- Represents zero.

(D) Withheld to avoid disclosing data for individual operations.

¹ Counties with missing data are included in "Other" counties/districts to avoid disclosure of individual information.

All Sheep & Lambs: Inventory by County – Montana: January 1, 2016-2018

County & Districts ¹	All Sheep & Lambs		
	(2016)	(2017)	(2018)
Deer Lodge	600	600	600
Flathead	400	400	400
Granite	400	400	400
Lake	2,000	2,000	2,000
Lincoln	400	400	400
Missoula	1,400	1,400	1,400
Powell	400	400	400
Ravalli	2,500	2,500	2,400
Sanders	600	600	600
Northwest			
Blaine	(D)	(D)	(D)
Chouteau	1,600	1,600	1,500
Glacier	1,500	1,500	1,400
Hill	600	600	600
Liberty	(D)	(D)	(D)
Phillips	5,900	5,900	5,800
Pondera	4,700	4,700	4,600
Teton	6,900	6,900	6,800
Toole	2,500	3,000	2,900
North Central			
Daniels	100	100	100
Dawson	1,800	1,700	1,700
Garfield	17,400	17,500	17,100
McCone	7,100	7,100	7,000
Richland	4,300	4,300	4,200
Roosevelt	800	800	700
Sheridan	1,100	1,000	1,000
Valley	1,100	1,000	1,000
Northeast			
Broadwater	(D)	(D)	(D)
Cascade	6,100	6,100	5,900
Fergus	2,400	2,400	2,300
Golden Valley	18,500	18,700	18,300
Judith Basin	7,000	7,000	6,800
Lewis & Clark	2,900	2,900	2,900
Meagher	(D)	(D)	(D)
Musselshell	2,500	2,300	2,200
Petroleum	(D)	(D)	(D)
Wheatland	11,100	10,600	10,400
Central			
Beaverhead	15,800	15,700	15,400
Gallatin	2,000	1,900	1,900
Jefferson	900	900	900
Madison	3,500	3,500	3,400
Silver Bow	200	200	200
Southwest			
Big Horn	600	600	500
Carbon	7,500	7,700	7,500
Park	2,500	2,500	2,400
Stillwater	17,600	17,600	17,200
Sweet Grass	4,400	4,400	4,300
Treasure	(D)	(D)	(D)
Yellowstone	2,700	2,700	2,600
South Central			
Carter	25,000	25,500	25,000
Custer	4,800	4,900	4,800
Fallon	1,400	1,300	1,300
Powder River	9,000	9,000	8,800
Prairie	500	400	400
Rosebud	1,200	1,000	1,100
Wibaux	100	100	100
Southeast			
Other Counties	13,700	13,700	13,400
Montana	230,000	230,000	225,000

(D) Withheld to avoid disclosing data for individual operations.

¹ Counties with missing data are included in "Other" counties/districts to avoid disclosure of individual information.

Hogs & Pigs: Inventory by County – Montana: December 1, 2015-2017

County & Districts ¹	Hogs & Pigs		
	(2015)	(2016)	(2017)
Flathead	1,200	1,200	1,200
Lake	300	300	300
Ravalli	300	300	300
Sanders	100	100	100
Northwest			
Glacier	22,000	22,000	22,500
Liberty	15,700	15,700	16,000
Phillips	200	200	200
Pondera	23,500	23,500	24,000
Toole	14,500	14,400	14,800
North Central			
Northeast			
Cascade	19,400	19,400	19,900
Fergus	300	300	300
Judith Basin	200	200	200
Wheatland	11,800	11,800	12,100
Central			
Beaverhead	100	100	100
Gallatin	300	300	300
Jefferson	100	100	100
Southwest			
Carbon	200	200	200
Stillwater	100	100	100
South Central			
Other Counties	64,700	64,800	66,300
Montana	175,000	175,000	179,000

¹ Counties with missing data are included in "Other" counties/districts to avoid disclosure of individual information.

Report	Frequency	Approximate Date of Publication
MONTANA REPORTS: Crop Weather Report Weekly Crop Weather Report Monthly Montana Agricultural Statistics Bulletin Wheat Varieties NATIONAL REPORTS: CROPS Crop Forecasts Winter Wheat Seedings Prospective Plantings Annual Crop Summary Crop Values Grain Stocks LIVESTOCK, DAIRY, POULTRY Livestock Slaughter Cattle Inventory & Calf Crop Hog Inventory & Pig Crop Meat Animals Marketings & Cash Receipts PRICES Agricultural Prices	Weekly Monthly Annual Annual Monthly Annual Annual Annual Quarterly Monthly Annual Quarterly Annual Monthly	Mondays, April-November 1st Monday of the Month, December-March November Mid-July 12th of the Month Mid-January Late March Mid-January Late February January, March, June & September 15th of the Month, December-June 20th of the Month Late January January, March, June & September End of the Month
Statistics in the National program are released in Washington, D.C. and locally according to strict, predetermined dates.		

All Reports Are Available on the Internet
 Montana's Website: www.nass.usda.gov/mt/

Electronic Subscriptions

The screenshot shows the USDA National Agricultural Statistics Service website. The header includes the USDA logo, the text 'United States Department of Agriculture National Agricultural Statistics Service', and social media icons for Twitter, YouTube, RSS, and Facebook. A search bar is located in the top right corner.

The main navigation menu includes: Data & Statistics, Publications, Newsroom, Surveys, Census, About NASS, Contact Us, and Help. The breadcrumb trail reads: 'You are here: Home / Statistics by State / Montana / Subscribe to MT Reports'. A dropdown menu for 'Statistics by State' is set to 'Select a State'.

The page content is titled 'USDA's National Agricultural Statistics Service Montana Field Office (Part of the Mountain Regional Field Office)'. The main heading is 'Subscribe to MT reports'. Below this, there is a section for 'Electronic Reports' with the following text: 'Complete this form and click on the Subscribe button to receive Montana agricultural statistics reports via Email. You can also [subscribe to National reports](#) through the USDA Economics and Statistics System.'

The 'Select the Reports to Subscribe' section features a dropdown menu with the following options: Montana All Reports, Montana Crop-Weather, Montana Crops, and Montana Livestock.

Below the dropdown menu are two text input fields: '*Enter your first and last name:' and '*Enter your Email:'. At the bottom of the form are two buttons: 'Subscribe' and 'Unsubscribe'.

A section for 'Printed Reports' states: 'Printed Montana reports are also available by mail. [Click here for subscription instructions.](#)'

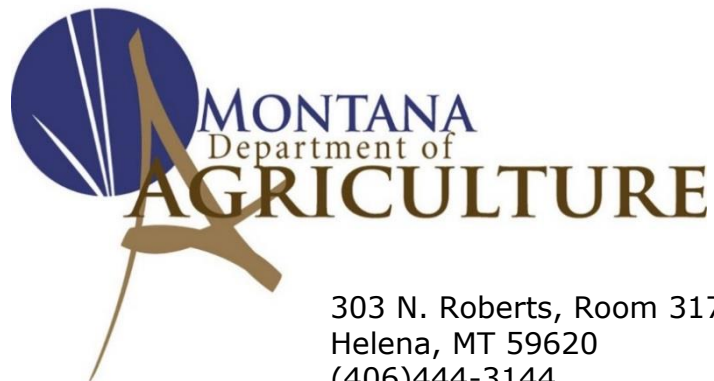
The footer of the page includes the text: 'Questions? Comments? Suggestions? Please email nassfomtr@nass.usda.gov or call (406) 441-1240' and 'Last Modified: 04/29/2016'. The bottom-most line of the page reads: '~ Providing Timely, Accurate and Useful Statistics in Service to U.S. Agriculture ~'



USDA-NASS

MOUNTAIN REGION: MONTANA FIELD OFFICE
FACT FINDERS FOR AGRICULTURE

10 West 15th Street, Suite 3100
Helena, MT 59626-3100
(800) 835-2612
nass-mt@nass.usda.gov
www.nass.usda.gov/mt



303 N. Roberts, Room 317
Helena, MT 59620
(406)444-3144
agr@mt.gov
www.agr.mt.gov