



Missouri Crop Progress and Condition

Released April 29, 2024

There were 3.6 days suitable for fieldwork in the week ending April 28, 2024. Statewide, the average temperature was 58.3 degrees, 0.3 degrees below normal. Precipitation averaged 3.21 inches, 2.25 inches above normal. Topsoil moisture supply was rated 1 percent very short, 5 percent short, 71 percent adequate, and 23 percent surplus. Subsoil moisture supply was rated 4 percent very short, 19 percent short, 68 percent adequate, and 9 percent surplus. Corn planted reached 63 percent, compared to the 5-year average of 40 percent. Corn emerged reached 35 percent, compared to the 5-year average of 10 percent. Soybeans planted reached 24 percent, compared to the 5-year average of 9 percent. Soybeans emerged reached 9 percent, compared to the 5-year average of 2 percent. Cotton planted reached 10 percent, compared to the 5-year average of 3 percent. Cotton emerged reached 1 percent. Rice planted reached 68 percent, compared to the 5-year average of 37 percent. Rice emerged reached 24 percent, compared to the 5-year average of 16 percent. Winter wheat headed reached 51 percent, compared to the 5-year average of 17 percent. Winter wheat condition was rated 1 percent very poor, 1 percent poor, 20 percent fair, 69 percent good, and 9 percent excellent.

Days Suitable for Fieldwork and Soil Moisture Supply: Week Ending April 28, 2024

State	Days Suitable for Fieldwork	Topsoil Moisture Supply				Subsoil Moisture Supply			
		Very Short	Short	Adequate	Surplus	Very Short	Short	Adequate	Surplus
Missouri	3.6	(percent) 1	(percent) 5	(percent) 71	(percent) 23	(percent) 4	(percent) 19	(percent) 68	(percent) 9

Crop Progress – Missouri

Item	Week ending			2019-2023 Average
	April 28, 2024	April 21, 2024	April 28, 2023	
	(percent)	(percent)	(percent)	(percent)
Corn planted	63	47	74	40
Corn emerged	35	12	25	10
Soybeans planted	24	16	29	9
Soybeans emerged	9	3	9	2
Cotton planted	10	3	4	3
Cotton emerged	1	-	(NA)	(NA)
Rice planted	68	56	70	37
Rice emerged	24	14	26	16
Winter wheat headed	51	23	21	17

(NA) Not available.

- Represents zero.

Winter Wheat Condition – Missouri

Date	Very Poor	Poor	Fair	Good	Excellent
	(percent)	(percent)	(percent)	(percent)	(percent)
April 28, 2024	1	1	20	69	9
April 21, 2024	1	1	21	64	13
April 28, 2023	-	6	27	63	4

- Represents zero.

Pasture Condition – Missouri

Date	Very Poor	Poor	Fair	Good	Excellent
	(percent)	(percent)	(percent)	(percent)	(percent)
April 28, 2024	2	6	32	58	2
April 21, 2024	2	9	38	50	1
April 28, 2023	-	14	51	34	1

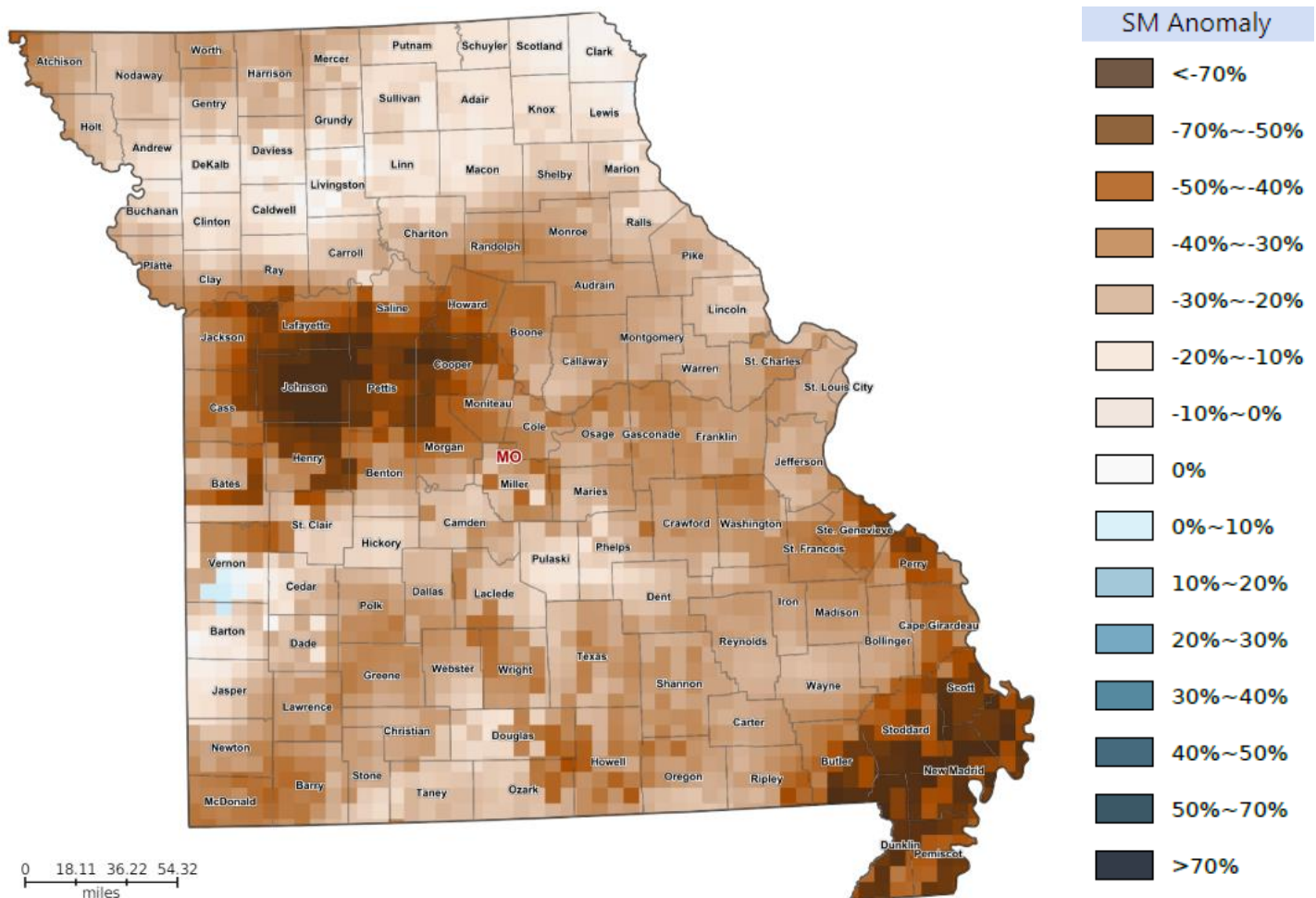
- Represents zero.

Supply of Hay and Other Roughages and Stock Water Supply: April 28, 2024

State	Supply of Hay and Other Roughages				Stock Water Supply			
	Very Short	Short	Adequate	Surplus	Very Short	Short	Adequate	Surplus
	(percent)	(percent)	(percent)	(percent)	(percent)	(percent)	(percent)	(percent)
Missouri	4	25	71	-	1	9	79	11

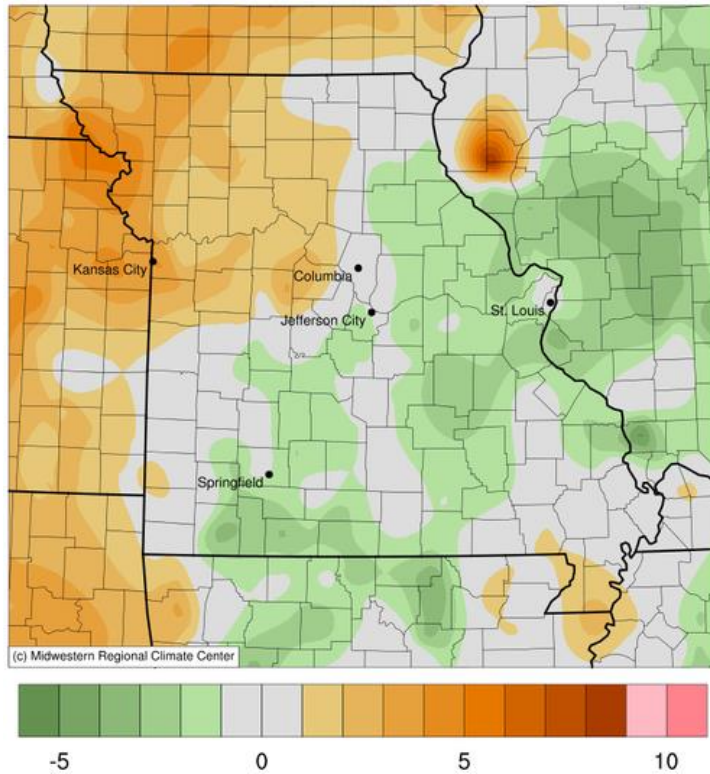
- Represents zero.

Soil Moisture Deviation from Historical Average – April 25th

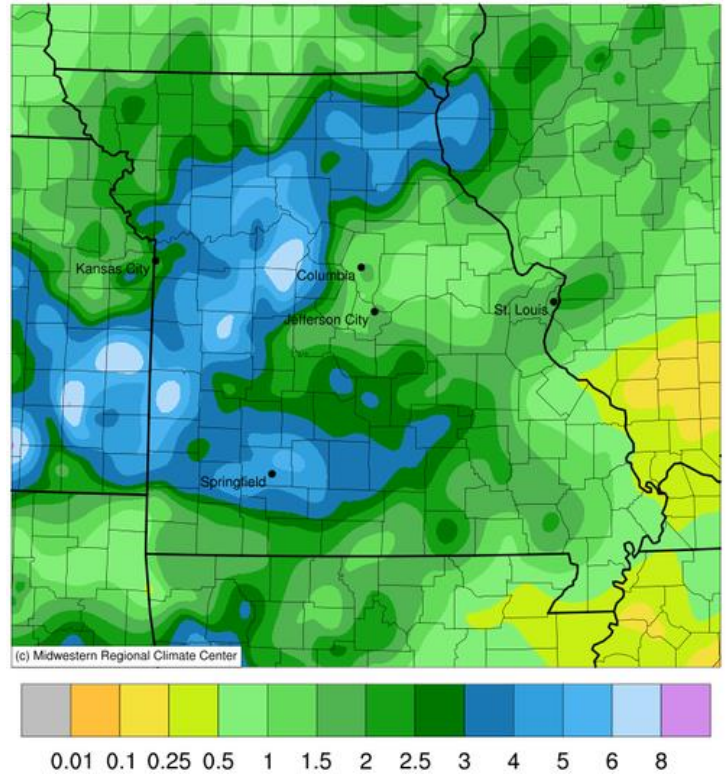


<https://cloud.csiss.gmu.edu/Crop-CASMA/>
(historical average includes 2015-current)

Average Temperature (°F): Departure from 1991-2020 Normals
April 22, 2024 to April 28, 2024



Accumulated Precipitation (in)
April 22, 2024 to April 28, 2024



Access to NASS Reports

For your convenience, you may access NASS reports and products the following ways:

- All reports are available electronically, at no cost, on the NASS web site: <http://www.nass.usda.gov>
- Both national and state specific reports are available via a free e-mail subscription. To set-up this free subscription, visit <http://www.nass.usda.gov> and in the “Follow NASS” box under “Receive reports by Email,” click on “National” or “State” to select the reports you would like to receive.
- Follow us on X @usda_nass

For more information on NASS surveys and reports, call the Heartland Regional Field Office at (314) 595-9594 or e-mail: nassrfohlr@usda.gov.