



# Missouri Crop Progress and Condition

Released April 22, 2024

There were 4.8 days suitable for fieldwork in the week ending April 21, 2024. Statewide, the average temperature was 60.7 degrees, 3.7 degrees above normal. Precipitation averaged 0.70 inches, 0.30 inches below normal. Topsoil moisture supply was rated 8 percent very short, 20 percent short, and 72 percent adequate. Subsoil moisture supply was rated 14 percent very short, 32 percent short, and 54 percent adequate. Corn planted reached 47 percent, compared to the 5-year average of 21 percent. Corn emerged reached 12 percent, compared to the 5-year average of 3 percent. Soybeans planted reached 16 percent, compared to the 5-year average of 3 percent. Soybeans emerged reached 3 percent. Cotton planted reached 3 percent, compared to the 5-year average of 1 percent. Rice planted reached 56 percent, compared to the 5-year average of 25 percent. Rice emerged reached 14 percent, compared to the 5-year average of 5 percent. Winter wheat headed reached 23 percent, compared to the 5-year average of 5 percent. Winter wheat condition was 1 percent very poor, 1 percent poor, 21 percent fair, 64 percent good, and 13 percent excellent.

## Days Suitable for Fieldwork and Soil Moisture Supply: Week Ending April 21, 2024

State	Days Suitable for Fieldwork	Topsoil Moisture Supply				Subsoil Moisture Supply			
		Very Short	Short	Adequate	Surplus	Very Short	Short	Adequate	Surplus
Missouri .....	4.8	(percent) 8	(percent) 20	(percent) 72	(percent) -	(percent) 14	(percent) 32	(percent) 54	(percent) -

- Represents zero.

## Crop Progress – Missouri

Item	Week ending			2019-2023 Average
	April 21, 2024	April 14, 2024	April 21, 2023	
	(percent)	(percent)	(percent)	(percent)
Corn planted .....	47	26	50	21
Corn emerged .....	12	1	9	3
Soybeans planted .....	16	8	13	3
Soybeans emerged .....	3	-	1	-
Cotton planted .....	3	2	1	1
Rice planted .....	56	35	54	25
Rice emerged .....	14	-	9	5
Winter wheat headed .....	23	5	9	5

- Represents zero.

## Winter Wheat Condition – Missouri

Date	Very Poor	Poor	Fair	Good	Excellent
	(percent)	(percent)	(percent)	(percent)	(percent)
April 21, 2024 .....	1	1	21	64	13
April 14, 2024 .....	1	1	23	64	11
April 21, 2023 .....	-	4	28	64	4

- Represents zero.

## Pasture Condition – Missouri

Date	Very Poor	Poor	Fair	Good	Excellent
	(percent)	(percent)	(percent)	(percent)	(percent)
April 21, 2024 .....	2	9	38	50	1
April 14, 2024 .....	2	13	34	51	-
April 21, 2023 .....	1	7	43	44	5

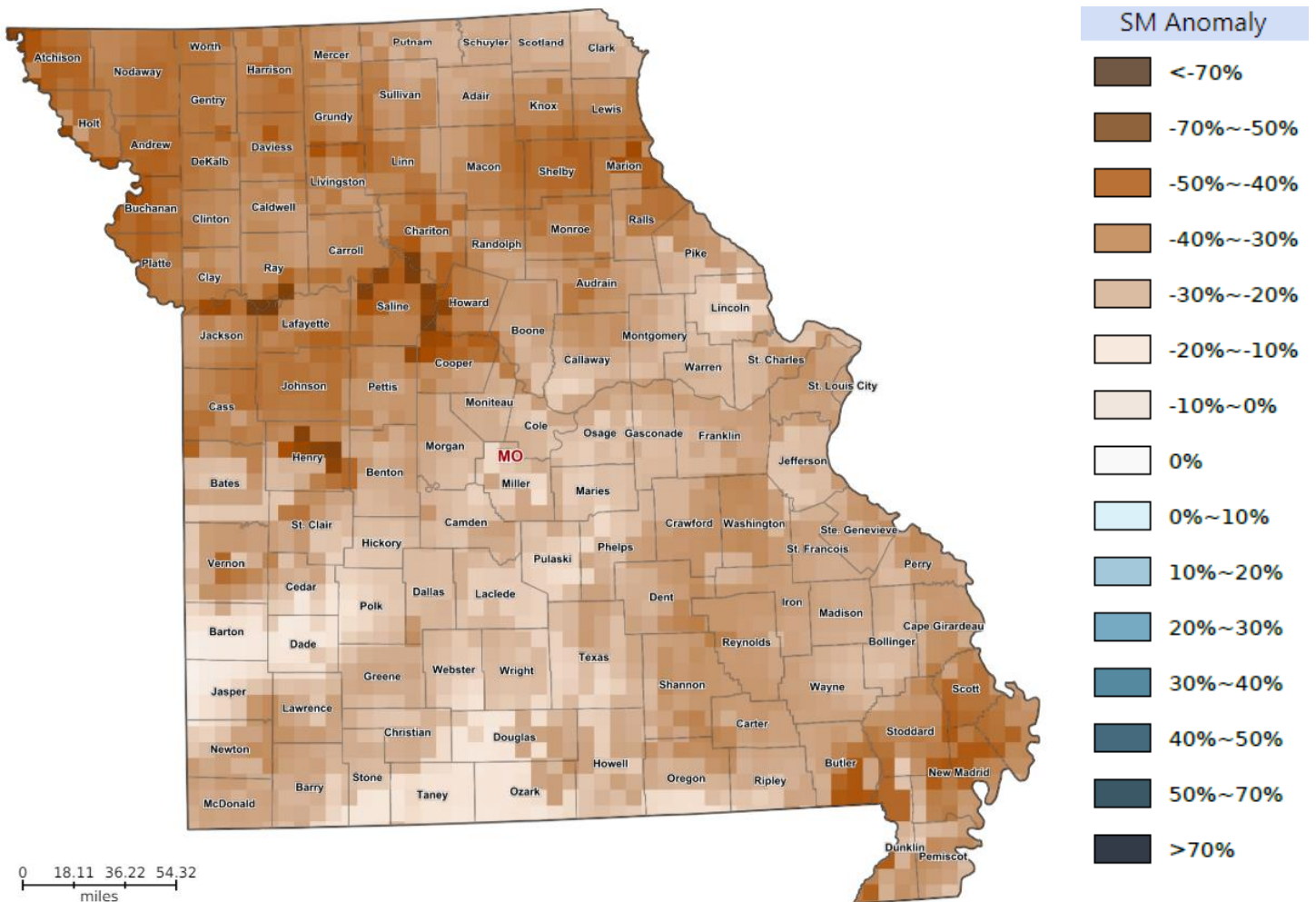
- Represents zero.

## Supply of Hay and Other Roughages and Stock Water Supply: April 21, 2024

State	Supply of Hay and Other Roughages				Stock Water Supply			
	Very Short	Short	Adequate	Surplus	Very Short	Short	Adequate	Surplus
	(percent)	(percent)	(percent)	(percent)	(percent)	(percent)	(percent)	(percent)
Missouri .....	5	28	67	-	3	15	82	-

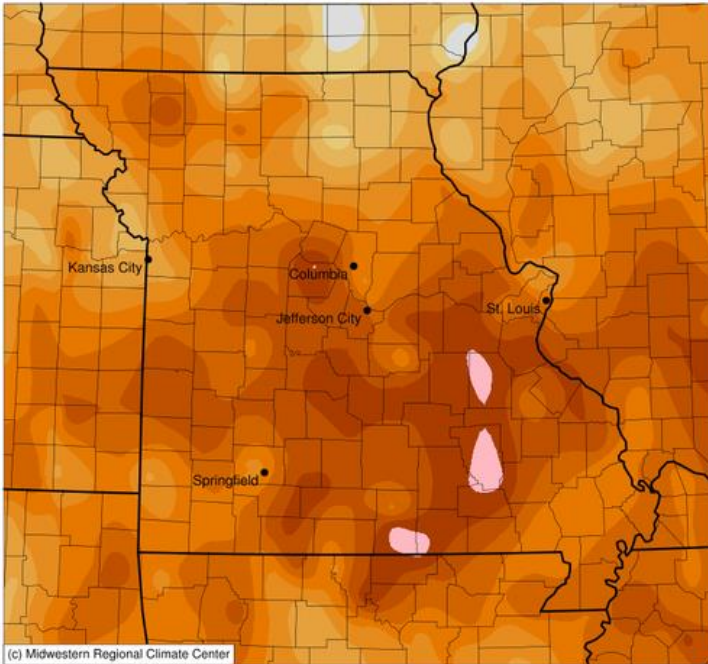
- Represents zero.

## Soil Moisture Deviation from Historical Average – April 13<sup>th</sup>

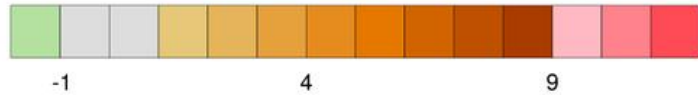
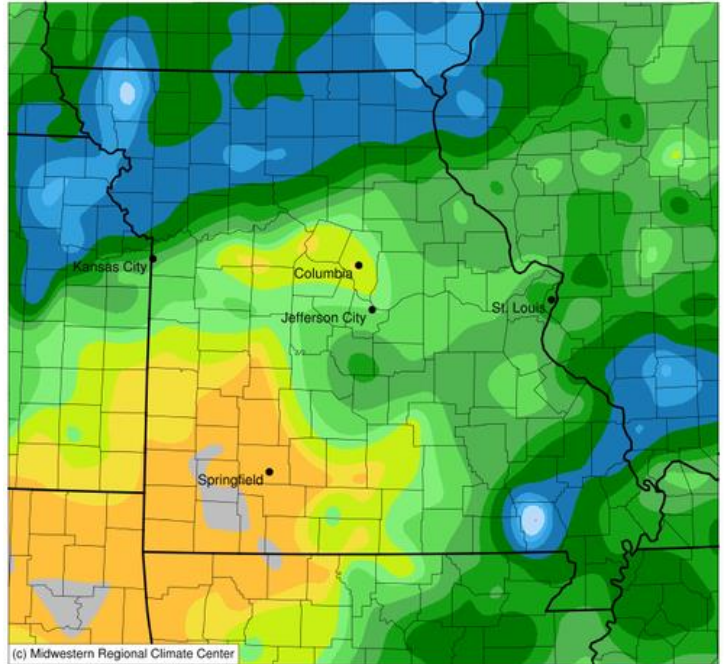


<https://cloud.csiss.gmu.edu/Crop-CASMA/>  
*(historical average includes 2015-current)*

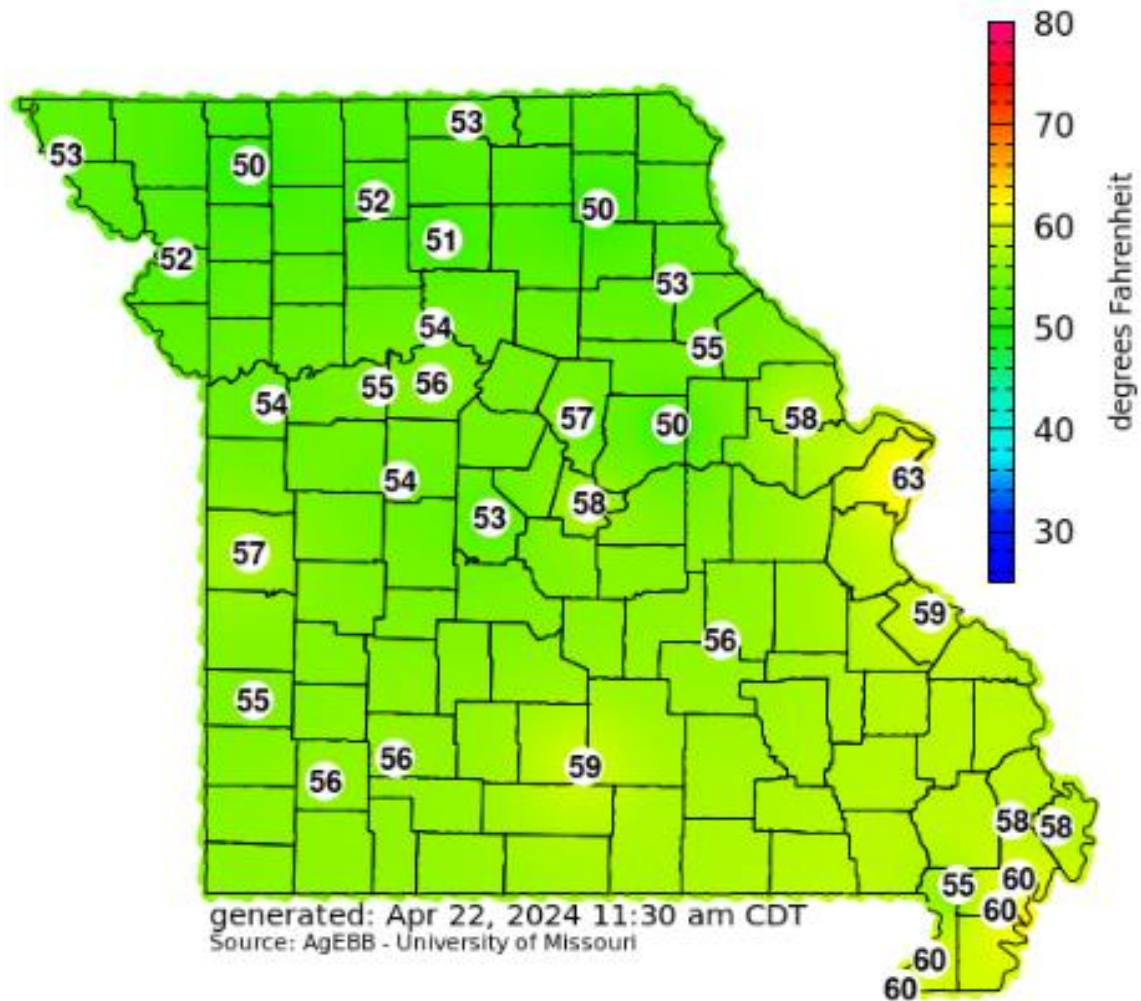
**Average Temperature (°F): Departure from 1991-2020 Normals**  
April 15, 2024 to April 21, 2024



**Accumulated Precipitation (in)**  
April 15, 2024 to April 21, 2024



## Current 4-inch Bare Soil Temperature (°F)



### Access to NASS Reports

For your convenience, you may access NASS reports and products the following ways:

- All reports are available electronically, at no cost, on the NASS web site: <http://www.nass.usda.gov>
- Both national and state specific reports are available via a free e-mail subscription. To set-up this free subscription, visit <http://www.nass.usda.gov> and in the “Follow NASS” box under “Receive reports by Email,” click on “National” or “State” to select the reports you would like to receive.
- Follow us on X @usda\_nass

For more information on NASS surveys and reports, call the Heartland Regional Field Office at (314) 595-9594 or e-mail: [nassrfohlr@usda.gov](mailto:nassrfohlr@usda.gov).