



Missouri Crop Progress and Condition

Released April 15, 2024

There were 6.1 days suitable for fieldwork in the week ending April 14, 2024. Statewide, the average temperature was 59.4 degrees, 6.1 degrees above normal. Precipitation averaged 0.49 inches, 0.62 inches below normal. Topsoil moisture supply was rated 9 percent very short, 25 percent short, and 66 percent adequate. Subsoil moisture supply was rated 14 percent very short, 34 percent short, and 52 percent adequate. Corn planted reached 26 percent, compared to the 5-year average of 10 percent. Corn emerged reached 1 percent, compared to the 5-year average of 1 percent. Soybeans planted reached 8 percent, compared to the 5-year average of 1 percent. Cotton planted reached 2 percent. Rice planted reached 35 percent, compared to the 5-year average of 12 percent. Winter wheat headed reached 5 percent, compared to the 5-year average of 1 percent. Winter wheat condition was 1 percent very poor, 1 percent poor, 23 percent fair, 64 percent good, and 11 percent excellent.

Days Suitable for Fieldwork and Soil Moisture Supply: Week Ending April 14, 2024

State	Days Suitable for Fieldwork	Topsoil Moisture Supply				Subsoil Moisture Supply			
		Very Short	Short	Adequate	Surplus	Very Short	Short	Adequate	Surplus
Missouri	6.1	(percent)	(percent)	(percent)	(percent)	(percent)	(percent)	(percent)	(percent)
		9	25	66	-	14	34	52	-

- Represents zero.

Crop Progress – Missouri

Item	Week ending			2019-2023 Average
	April 14, 2024	April 7, 2024	April 14, 2023	
	(percent)	(percent)	(percent)	(percent)
Corn planted	26	7	23	10
Corn emerged	1	(NA)	3	1
Soybeans planted	8	3	4	1
Cotton planted	2	-	-	-
Rice planted	35	14	22	12
Winter wheat headed	5	2	2	1

(NA) Not available.

- Represents zero.

Winter Wheat Condition – Missouri

Date	Very Poor	Poor	Fair	Good	Excellent
	(percent)	(percent)	(percent)	(percent)	(percent)
April 14, 2024	1	1	23	64	11
April 7, 2024	-	1	23	64	12
April 14, 2023	1	4	23	67	5

- Represents zero.

Pasture Condition – Missouri

Date	Very Poor	Poor	Fair	Good	Excellent
	(percent)	(percent)	(percent)	(percent)	(percent)
April 14, 2024	2	13	34	51	-
April 7, 2024	1	16	35	48	-
April 14, 2023	-	4	39	52	5

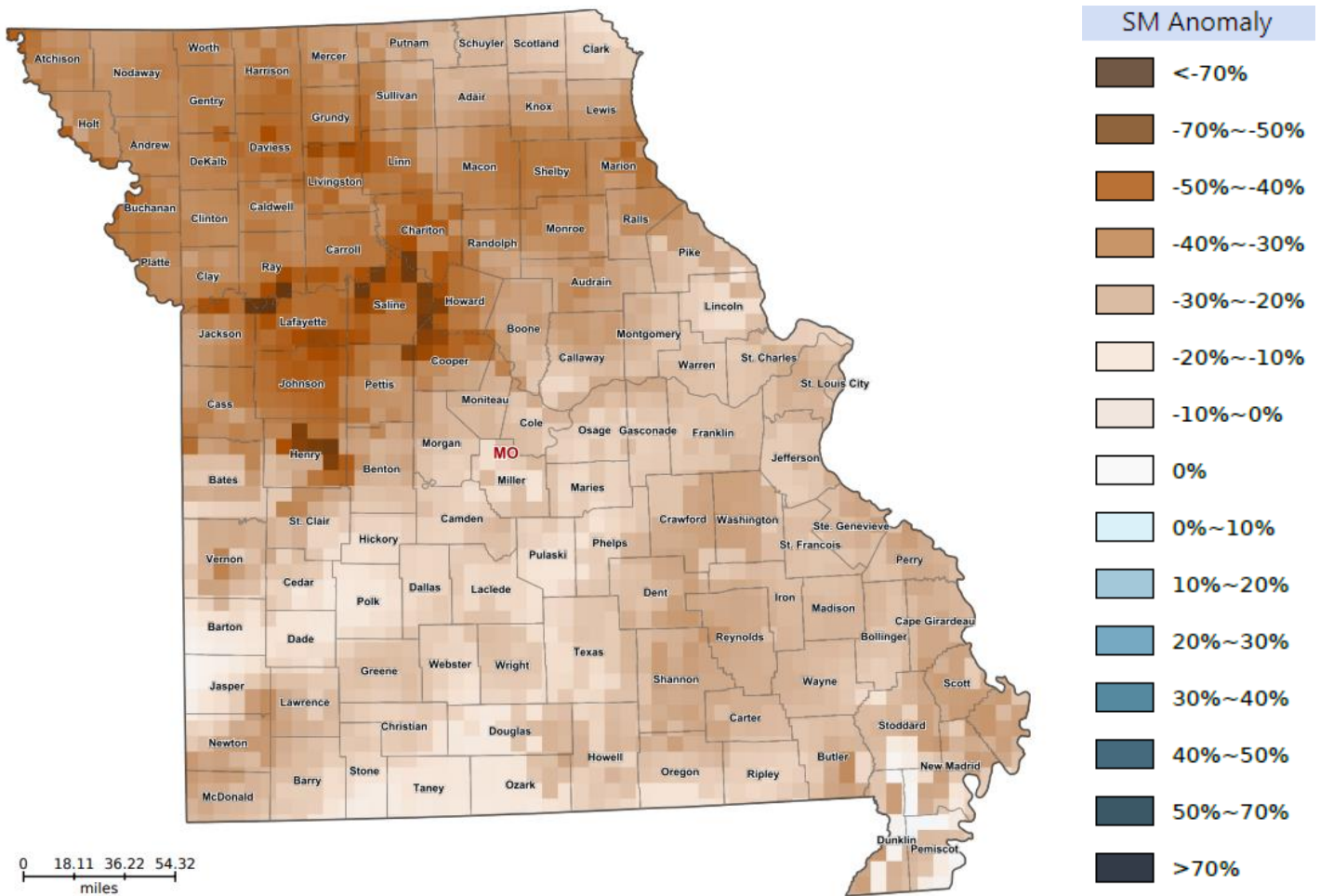
- Represents zero.

Supply of Hay and Other Roughages and Stock Water Supply: April 14, 2024

State	Supply of Hay and Other Roughages				Stock Water Supply			
	Very Short	Short	Adequate	Surplus	Very Short	Short	Adequate	Surplus
	(percent)	(percent)	(percent)	(percent)	(percent)	(percent)	(percent)	(percent)
Missouri	4	30	66	-	3	16	81	-

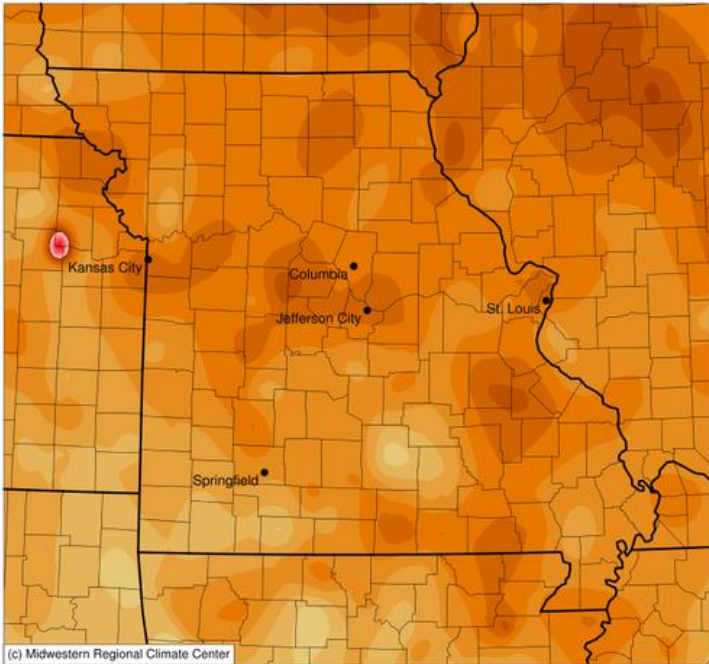
- Represents zero.

Soil Moisture Deviation from Historical Average – April 12th

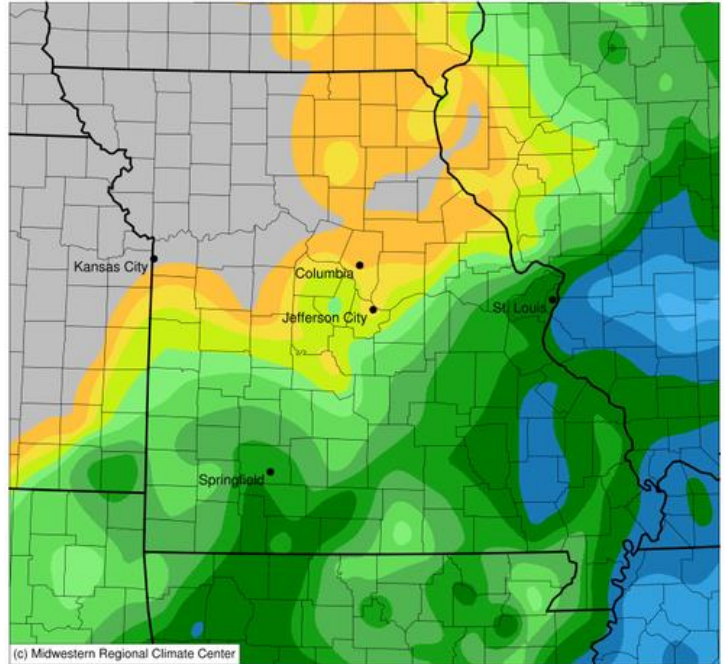


<https://cloud.csiss.gmu.edu/Crop-CASMA/>
(historical average includes 2015-current)

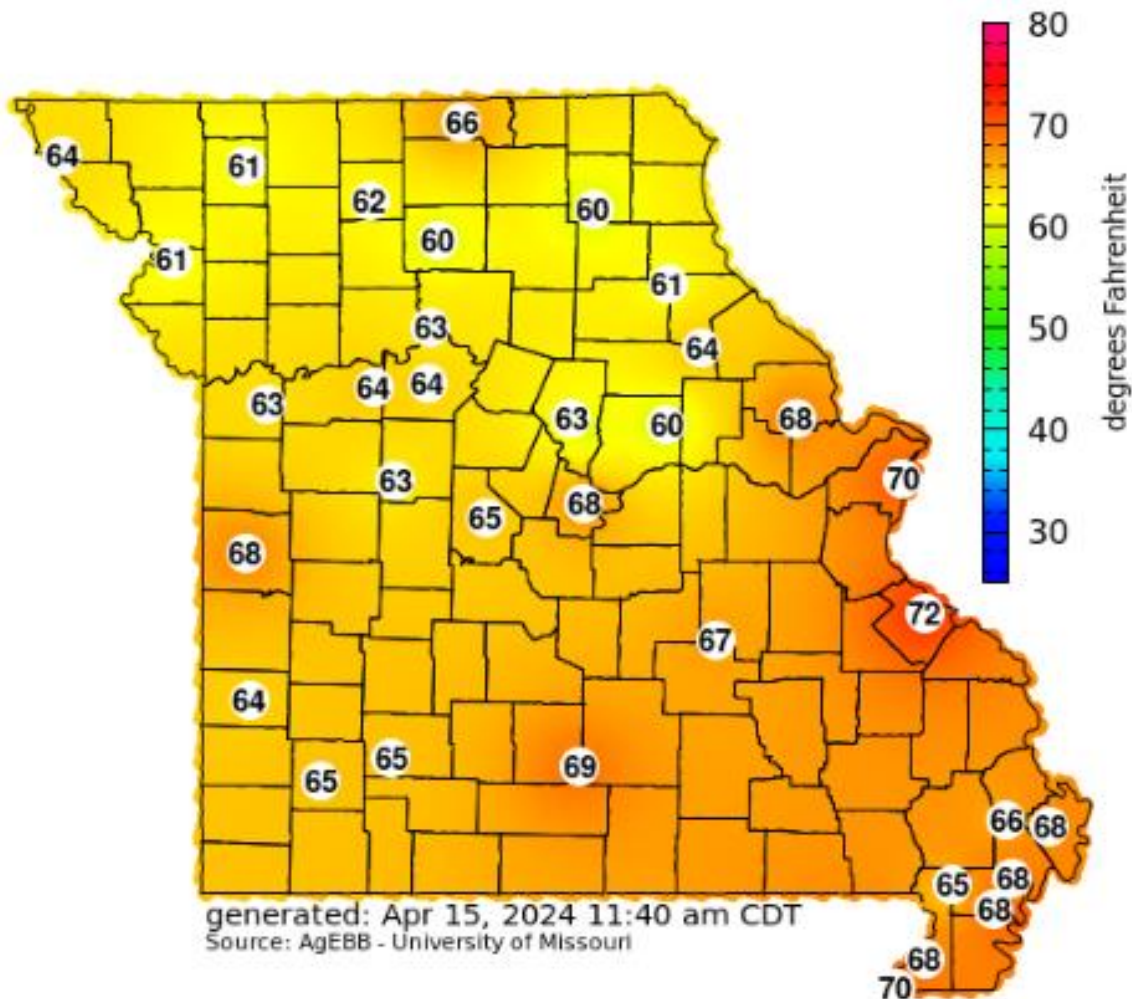
Average Temperature (°F): Departure from 1991-2020 Normals
 April 08, 2024 to April 14, 2024



Accumulated Precipitation (in)
 April 08, 2024 to April 14, 2024



Current 4-inch Bare Soil Temperature (°F)



Access to NASS Reports

For your convenience, you may access NASS reports and products the following ways:

- All reports are available electronically, at no cost, on the NASS web site: <http://www.nass.usda.gov>
- Both national and state specific reports are available via a free e-mail subscription. To set-up this free subscription, visit <http://www.nass.usda.gov> and in the “Follow NASS” box under “Receive reports by Email,” click on “National” or “State” to select the reports you would like to receive.
- Follow us on X @usda_nass

For more information on NASS surveys and reports, call the Heartland Regional Field Office at (314) 595-9594 or e-mail: nassrfohlr@usda.gov.