

CORN - CROP DEVELOPMENT

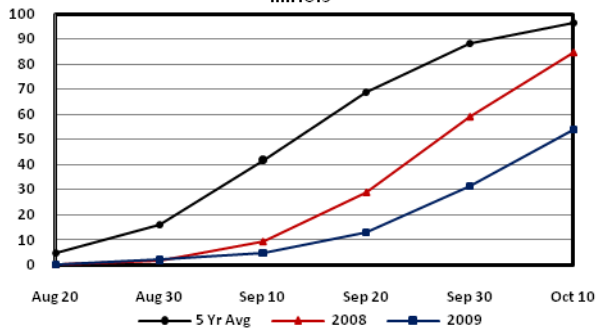
CORN: Percent of acreage mature by specified dates, Illinois, 2000-2009

Year	August		September			October
	20	30	10	20	30	10
2000	9	19	53	84	98	100
2001	13	23	55	80	94	99
2002	5	12	30	60	87	97
2003	3	7	29	58	89	97
2004	5	16	41	75	94	99
2005	4	15	50	79	95	99
2006	5	14	39	70	94	99
2007	10	32	71	92	99	100
2008	0	2	9	29	59	85
2009	0	2	5	13	31	54

CORN: Percent of acreage harvested by specified dates, Illinois, 2000-2009

Year	September			October			November		
	10	20	30	10	20	30	10	20	30
2000	4	21	42	63	83	95	99	99	100
2001	4	14	31	50	64	78	95	99	100
2002	3	8	22	44	70	87	95	98	99
2003	2	7	21	43	67	86	95	99	100
2004	2	12	37	64	77	85	93	98	100
2005	5	18	39	61	84	94	98	100	100
2006	2	9	26	49	70	84	94	98	100
2007	14	37	60	78	90	96	99	100	100
2008	0	1	6	17	34	57	81	92	98
2009	0	1	3	6	12	18	37	58	74

Corn - Percent Mature
Illinois



Corn - Percent Harvested
Illinois

