



Florida Agricultural Statistics Service
1222 Woodward Street
Orlando, Florida 32803
407 / 648-6013

<http://www.nass.usda.gov/fl>

CITRUS

FEBRUARY FORECAST

MATURITY TEST RESULTS AND FRUIT SIZE



FLORIDA
AGRICULTURE

February 9, 2005

ALL ORANGES STAY AT 162.0 MILLION BOXES

The USDA Agricultural Statistics Board has released an orange crop forecast for Florida which is unchanged from last month's total of 162.0 million boxes. Comprising the forecast are 84.0 million boxes of early-midseason-Navel oranges and 78.0 million boxes of the later maturing Valencia variety. If realized, this crop will be the fewest boxes harvested since the 1991-92 season's 139.8 million boxes and only two-thirds as many as last season.

In the past 10 seasons, the February forecast has differed from final production by an average of 2.4 million boxes with four seasons higher and six lower. Final utilization may differ from these forecasts because of the extreme variabilities in average fruit per tree and assumptions made on loss of fruit following the hurricanes in 2004.

EARLY-MIDSEASONS REMAIN 84.0 MILLION BOXES

The Row Count survey, conducted January 25-26, 2005, shows harvest is lagging behind recent seasons. However, harvest has passed the halfway mark and, at this level, is a good indicator which also supports the current forecast. Although the December size and drop surveys provided the final components used in the forecast preparation, a follow-up survey was conducted in January and the results

CITRUS PRODUCTION, FEBRUARY 1, 2005

FORECASTS BY VARIETIES AND STATES, WITH COMPARISONS

Crop and State	Production		Forecast	
	2002-03	2003-04	Jan 12, 2005	Feb 9, 2005

--- 1,000 boxes ---

EARLY, MIDSEASON, AND NAVAL ORANGES:

FLORIDA	112,000	126,000	84,000	84,000
California	42,000	38,000	44,000	44,000
Texas	1,350	1,420	1,500	1,500
Arizona	200	300	240	240
Total Above Varieties	155,550	165,720	129,740	129,740

VALENCIA ORANGES:

FLORIDA	91,000	116,000	78,000	78,000
California	20,000	14,000	16,500	16,500
Texas	220	230	250	250
Arizona	270	170	190	190
Total Valencias	111,490	130,400	94,940	94,940

ALL ORANGES:

FLORIDA	203,000	242,000	162,000	162,000
California	62,000	52,000	60,500	60,500
Texas	1,570	1,650	1,750	1,750
Arizona	470	470	430	430
Total All Oranges	267,040	296,120	224,680	224,680

FORECAST DATES 2004-05 SEASON

March 10, 2005	April 8, 2005
May 12, 2005	June 10, 2005
July 12, 2005	

show that fruit continued to size at an average rate. Droppage, above the maximum of the past ten seasons, did slow in the past month and finished below record for this point in time.

The Navel portion of the forecast is continued at 2.5 million boxes. Certified utilization through January 30 is 1.8 million boxes. It is anticipated that less than the allocated 1.0 million boxes will be used in gift fruit and local sales.

SURVEY COMPONENTS USED IN THE FORECAST ^{1/}

Type	Bearing trees	Fruit per tree	Percent droppage	Fruit per box
	(1,000)			
Early-Mid	31,999	863	18	263
Navel	1,862	249	21	138
Valencia	41,208	529	21	210

^{1/} November survey data is considered final for Navels, December for early-mids, and March for Valencias.

VALENCIAS REMAIN AT 78.0 MILLION BOXES

The growth rate increased during the past month and the fruit size is projected to reach a near average size, requiring three fewer pieces to fill a 90 pound equivalent box. There has been an increase in the drop rate in the last month. However, if the droppage continues at an average pace through the final survey, it is projected that 21 percent will be lost prior to harvest. Although not a record level for a non-freeze year, it is the highest since 1990-91. Limited harvest for fresh use has begun.

FCOJ YIELD 1.58 GALLONS PER BOX

The all orange projected FCOJ yield is increased to 1.58 gallons per box from 1.56 last month. The early-midseason portion rose to 1.52 gallons per box from 1.50 and the late portion climbed to 1.66 from 1.63. Both the all orange and early-midseason projections are higher than last season's final yields of 1.56 gallons (all oranges) and 1.45 (early-midseason fruit). However, the late maturing Valencias yielded 1.69 gallons per box in 2003-04.

GRAPEFRUIT 13.0 MILLION BOXES

The Florida forecast of grapefruit for certified utilization (including an allocation of 700,000 boxes of gift fruit and local sales) is maintained at 13.0 million boxes. Making up the forecast is 3.0 million boxes of white grapefruit and 10.0 million boxes of colored varieties, both unchanged from last month. If realized, this forecast will be 68 percent less than harvested last season, and the lowest since the 1935-36 season. Assumptions are made based on the fruit per tree number published in the October forecast. Final utilization could differ from the forecast if the fruit per tree due to initial fruit loss from the hurricanes is different than projected.

The fruit size and drop measurements obtained in January are the primary indicators for the February grapefruit forecast. Average fruit size and drop projections for grapefruit are final for this month's forecast.

The **white** grapefruit forecast remains at 3.0 million boxes. Compared to last month, projected size is larger and the projected drop rate is higher. The two factors offset each other in total box expansion. Estimated utilization to February 1 is 1.7 million boxes, compared to 4.2 million boxes the same time last year.

The **colored** grapefruit forecast is maintained at 10.0 million boxes.

CITRUS PRODUCTION, FEBRUARY 1, 2005 FORECASTS BY VARIETIES AND STATES, WITH COMPARISONS

Crop and State	Production		Forecast	
	2002-03	2003-04	Jan 12, 2005	Feb 9, 2005
--- 1,000 boxes ---				
Grapefruit:				
FLORIDA-All	38,700	40,900	13,000	13,000
White	16,200	15,900	3,000	3,000
Colored	22,500	25,000	10,000	10,000
Texas	5,650	5,700	6,200	6,200
Arizona	130	140	180	180
California	5,600	5,400	5,300	5,300
Total Grapefruit	50,080	52,140	24,680	24,680
Lemons:				
California	24,000	18,000	19,500	19,500
Arizona	3,000	3,000	2,400	2,400
Total Lemons	27,000	21,000	21,900	21,900
Temples: Florida	1,300	1,400	700	700
Tangelos: Florida	2,350	1,000	1,100	1,400
Tangerines:				
FLORIDA-All	5,500	6,500	4,500	4,500
Early ^{1/}	3,000	3,600	2,500	2,500
Honey	2,500	2,900	2,000	2,000
California ^{2/}	2,800	2,700	2,900	2,900
Arizona ^{2/}	430	690	450	450
Total Tangerines	8,730	9,890	7,850	7,850

^{1/} Fallglo and Sunburst varieties.

^{2/} Includes tangelos.

Compared to last month, the projected size is larger, and the drop rate is higher. The two offsetting factors indicate the current forecast will still be realized. Estimated utilization to February 1 is 4.7 million boxes, compared to 11.2 million boxes the same time last year.

SURVEY COMPONENTS USED IN THE FORECAST ^{1/}

Type	Bearing trees	Fruit per tree	Percent droppage	Fruit per box
	(1,000)			
White Grapefruit ^{1/}	2,861	109	22	86
Colored Grapefruit	5,366	210	26	97

^{1/} January survey data is considered final.

^{2/} Seedless variety only.

ALL TANGERINES REMAIN AT 4.5 MILLION BOXES

The forecast of all tangerines is continued at 4.5 million boxes. Forecast for the early varieties (**Fallglo** and **Sunburst**) is 2.5 million boxes and the later maturing **Honey** variety is 2.0 million boxes.

The forecast of utilization for early tangerines is unchanged at 2.5 million boxes. **Fallglo** tangerine harvest is complete at slightly more than 650,000 boxes including other use and **Sunburst** tangerines estimated utilization to February 1 is just over 1.8 million boxes, including 150,000 boxes for other use. Early tangerine harvest is near complete with an estimated 11,000 boxes harvested the last week of January.

The **Honey** tangerine forecast is unchanged at 2.0 million boxes, down 200,000 boxes from the initial forecast set in October. The final size is slightly higher than projected last month and final drop realized is more than 53 percent, up from the projected 50 percent last month. Although not the highest drop, this year's drop is higher than nine of the last ten years.

TEMPLES REMAIN AT 700,000 BOXES

The Temple forecast is still 700,000 boxes. If attained, this will be the smallest amount since forecasting Temples began in the 1953-54 season. Fruit size is up since last month and compared to the last ten years is slightly below the average. The final drop rate for Temples is at 22 percent, up five percentage points from last month's projection. This final drop rate is higher than any of the past ten years.

TANGELOS NOW AT 1.4 MILLION BOXES

Tangelos increased to 1.4 million boxes, the same as the initial October forecast. The increase was based primarily on estimated utilization to February 1 at slightly over 1.2 million boxes.

UNADJUSTED MATURITY TESTS: Average of regular bloom fruit from sample groves, 2003-04 and 2004-05 seasons

Fruit type (No. groves) test date	Acid		Solids (Brix)		Ratio		Unfinished juice per box		Solids per box	
	2003-04	2004-05	2003-04	2004-05	2003-04	2004-05	2003-04	2004-05	2003-04	2004-05
	<i>Percent</i>		<i>Percent</i>				<i>Pounds</i>		<i>Pounds</i>	
	Juice and solids per box are unadjusted and not comparable to plant test results.									
ORANGES:										
Early (25-48)										
Sep 1	1.29	1.63	9.44	9.34	7.43	5.81	42.53	43.08	4.01	4.02
Oct 1	0.90	1.10	9.76	9.27	11.15	8.59	48.86	48.67	4.76	4.51
Nov 1	0.79	0.83	10.58	9.83	13.75	12.10	51.39	51.52	5.44	5.06
Dec 1	0.71	0.76	11.60	10.72	16.47	14.35	50.53	51.54	5.86	5.53
Jan 1	0.69	0.72	11.70	11.27	17.13	15.72	49.05	51.46	5.74	5.79
Feb 1	0.70	0.69	12.17	11.63	17.75	16.98	46.81	51.25	5.71	5.96
Mid (17-24)										
Sep 1	1.51	1.81	9.37	9.00	6.30	5.07	44.90	42.69	4.21	3.84
Oct 1	1.09	1.29	9.79	9.01	9.13	7.09	49.57	49.76	4.85	4.48
Nov 1	0.88	0.95	10.72	9.55	12.31	10.26	52.14	54.08	5.58	5.16
Dec 1	0.83	0.85	11.91	10.60	14.50	12.63	51.38	52.23	6.12	5.53
Jan 1	0.82	0.83	12.34	11.37	15.40	13.83	51.19	52.97	6.31	6.02
Feb 1	0.88	0.80	13.16	12.12	15.49	15.26	47.33	52.04	6.23	6.30
Late (150-144)										
Sep 1	NA	NA	NA	NA	NA	NA	NA	NA	NA	NA
Oct 1	2.01	2.43	8.92	8.64	4.47	3.59	46.28	46.50	4.13	4.02
Nov 1	1.63	1.92	9.55	8.84	5.91	4.64	51.07	50.23	4.88	4.44
Dec 1	1.40	1.56	10.38	9.73	7.53	6.29	53.45	53.16	5.55	5.17
Jan 1	1.26	1.39	11.13	10.46	8.94	7.56	53.39	53.98	5.95	5.64
Feb 1	1.18	1.24	11.87	11.00	10.13	8.99	52.02	55.03	6.18	6.05

NOTICE: All samples were run through an FMC 091 machine using mechanical pressure only. This machine utilizes a .040 short strainer and standard 5/8-inch orifice tube. The beam settings are also identical to past tests and no restrictors are used.

MATURITY TEST AVERAGES BY AREAS, FEBRUARY 1, 2005

Fruit type	Groves sampled	Acid	Solids (Brix)	Ratio	Unfinished juice per box	Solids per box
	<i>Number</i>	<i>Percent</i>	<i>Percent</i>		<i>Pounds</i>	<i>Pounds</i>
ORANGES:						
Early						
Indian River Dist.	3	0.67	11.82	17.78	49.33	5.83
Other Areas	45	0.69	11.62	16.93	51.38	5.97
Midseason						
Indian River Dist.	4	0.82	12.10	14.94	50.20	6.08
Other Areas	20	0.80	12.13	15.32	52.41	6.35
Late						
Indian River Dist.	23	1.18	10.88	9.29	55.76	6.07
Other Areas	121	1.25	11.02	8.93	54.89	6.05

FRUIT SIZE COMPARISONS BY TYPES TO PREVIOUS SEASONS

Size frequency distributions from the January size survey are shown in the table below. The distributions are by percent of fruit falling within the size range of each 4/5-bushel container. Fruit sizes were measured on trees in sample groves during the period January 5 through 24, 2005. Comparable sizes for 2003 and 2004 are also shown. These measurements are of fruit from spring bloom and exclude summer bloom in all seasons.

FLORIDA CITRUS: Size frequency distributions from January measurements

Type of fruit and size in 4/5-bushel containers	2003	2004	2005
--- Percent ---			
Valencia oranges:			
64 and larger	15.7	9.6	2.7
80	34.4	29.0	18.6
100	36.5	39.5	43.7
125	11.4	17.7	26.7
163 and smaller	2.0	4.2	8.3
White seedless grapefruit:			
32 and larger	39.1	18.2	26.4
36	24.3	21.8	25.7
40	18.1	22.2	20.0
48	9.8	14.6	12.4
56	4.4	9.3	7.5
63 and smaller	4.3	13.9	8.0
Colored seedless grapefruit:			
32 and larger	23.4	10.2	9.2
36	22.7	15.2	20.2
40	23.5	24.3	26.2
48	14.2	21.1	21.6
56	7.6	12.3	10.7
63 and smaller	8.6	16.9	12.1
Temples:			
80 and larger	63.5	35.2	41.5
100	28.5	36.7	44.5
120	6.5	18.5	11.2
156 and smaller	1.5	9.6	2.8
Honey tangerines:			
80 and larger	26.3	46.2	26.5
100	33.7	29.6	34.9
120	25.8	18.0	27.3
176	7.1	3.2	5.8
210 and smaller	7.1	3.0	5.5

The charts to the right compare the relationship of the January 2005 Valencia orange and white seedless grapefruit fruit size measurements with those taken in January 2004. The diameter measurements shown are the minimum values of each eighth inch range except for the smallest value.

CHART 1: Valencia orange size frequency by diameter from January measurements.

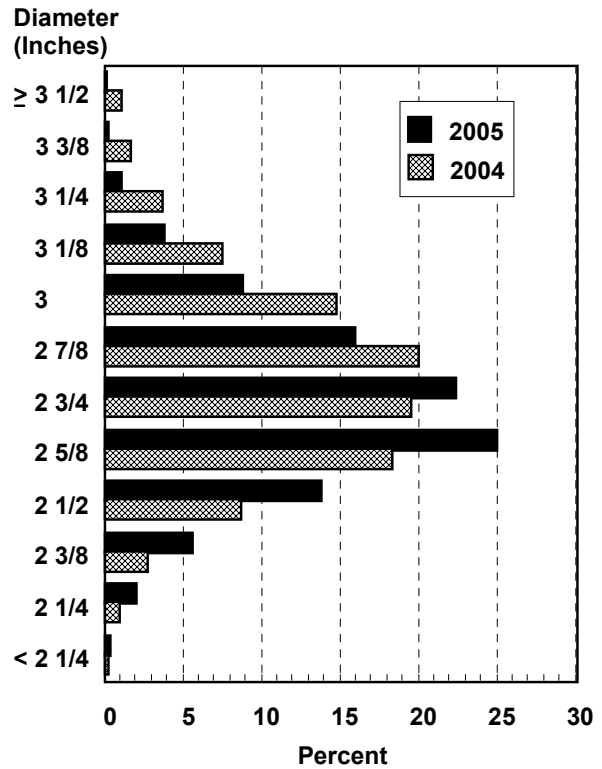


CHART 2: White seedless grapefruit size frequency by diameter from January measurements.

