



United States Department of Agriculture
National Agricultural Statistics Service



Arkansas Broiler Hatchery

Released: January 4, 2023

Delta Region – Arkansas Field Office

10800 Financial Centre Parkway, Suite 110, Little Rock, Arkansas 72211
(501) 228-9926 · (855) 270-2705 FAX · www.nass.usda.gov

Cooperating with the University of Arkansas – Division of Agriculture

This report contains the results from the **Weekly Broiler Hatchery Report**. These data are also posted on our web site at <https://www.nass.usda.gov/ar> and in a more detailed report at <https://www.nass.usda.gov>. Thanks to all who responded to this survey.

Broiler-Type Eggs Set Down 2 Percent from Last Year

Arkansas hatcheries set 24.2 million broiler-type eggs during the week ending December 31, 2022, down 2 percent from the comparable week in 2021 and down 1 percent from the previous week.

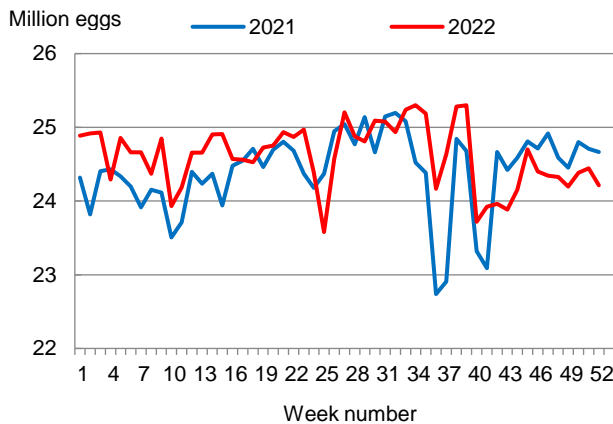
Hatcheries in the United States weekly program set 239 million eggs in incubators during the week ending December 31, 2022, up 1 percent from a year ago.

Broiler-Type Chicks Placed Up Slightly

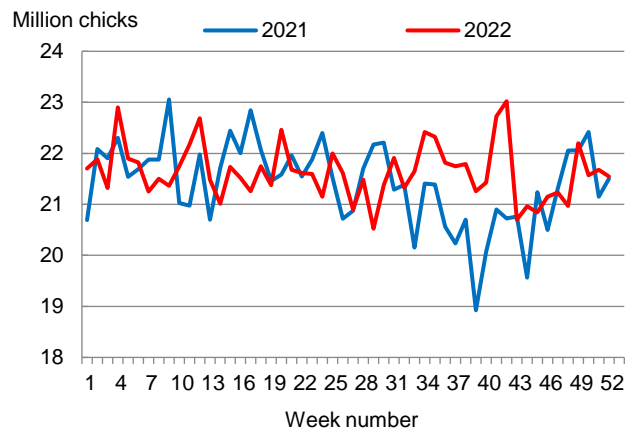
Arkansas broiler-type chicks placed for meat production were 21.5 million chicks during the week ending December 31, 2022, up slightly from the comparable week in 2021 but down 1 percent from the previous week.

Broiler growers in the United States weekly program placed 188 million chicks for meat production during the week ending December 31, 2022, up 1 percent from a year ago.

**Broiler-Type Eggs Set
Arkansas: 2021 and 2022**



**Broiler-Type Chicks Placed
Arkansas: 2021 and 2022**



Broiler-Type Eggs Set - Selected States and United States: 2022

State	Week ending					
	November 26, 2022	December 3, 2022	December 10, 2022	December 17, 2022	December 24, 2022	December 31, 2022
	(1,000 eggs)	(1,000 eggs)	(1,000 eggs)	(1,000 eggs)	(1,000 eggs)	(1,000 eggs)
Alabama	34,584	34,863	34,663	34,444	34,451	34,115
Arkansas	24,346	24,328	24,195	24,383	24,443	24,214
Delaware	5,215	5,354	5,271	5,166	5,206	4,913
Florida	1,225	1,225	1,225	1,225	1,225	1,209
Georgia	35,468	35,860	35,862	35,676	35,920	35,314
Kentucky	6,564	6,586	6,337	6,053	6,274	6,370
Louisiana	3,516	3,516	3,350	3,380	3,426	3,426
Maryland	8,005	8,003	8,005	8,001	8,066	8,066
Mississippi	16,344	16,172	16,432	16,341	16,054	15,932
Missouri	9,954	9,813	9,813	9,812	9,761	9,825
North Carolina	24,811	25,003	24,389	24,767	24,917	24,673
Oklahoma	7,279	7,326	7,697	7,482	7,523	7,473
Pennsylvania	6,934	6,849	6,646	6,734	6,637	6,561
South Carolina	5,907	6,043	5,786	6,042	5,599	6,041
Texas	17,902	18,395	18,506	18,415	18,128	17,860
Virginia	5,128	6,388	6,286	6,394	6,532	6,564
CA, TN, and WV	13,491	12,770	13,412	13,260	13,357	13,601
Other States	12,866	12,743	12,706	12,744	12,525	12,512
United States	239,539	241,237	240,581	240,319	240,044	238,669

Broiler-Type Chicks Placed - Selected States and United States: 2022

State	Week ending					
	November 26, 2022	December 3, 2022	December 10, 2022	December 17, 2022	December 24, 2022	December 31, 2022
	(1,000 chicks)	(1,000 chicks)	(1,000 chicks)	(1,000 chicks)	(1,000 chicks)	(1,000 chicks)
Alabama	24,262	25,809	25,052	25,271	25,126	25,192
Arkansas	21,235	20,966	22,201	21,570	21,676	21,544
Delaware	4,793	4,511	4,469	5,435	4,821	4,895
Florida	1,332	1,331	1,292	1,317	1,231	1,298
Georgia	25,439	24,884	27,473	27,183	27,784	28,024
Kentucky	5,016	5,545	5,849	5,498	6,422	5,529
Louisiana	2,862	2,705	2,966	2,927	2,937	2,869
Maryland	7,054	5,866	6,819	5,225	6,086	5,570
Mississippi	13,444	13,223	13,881	13,675	13,403	13,634
Missouri	5,002	6,913	6,561	6,711	7,183	6,308
North Carolina	19,093	19,548	19,638	18,664	18,498	17,958
Oklahoma	5,711	4,767	4,102	3,921	3,054	4,202
Pennsylvania	4,740	4,760	4,773	4,781	4,724	4,500
South Carolina	4,159	5,037	4,473	5,295	5,062	4,734
Texas	13,483	14,268	14,499	14,159	14,684	14,635
Virginia	4,301	6,105	4,106	4,544	5,700	5,746
CA, TN, and WV	11,445	11,340	12,438	12,210	10,804	11,777
Other States	9,652	9,471	9,594	9,716	9,471	9,567
United States	183,023	187,049	190,186	188,102	188,666	187,982