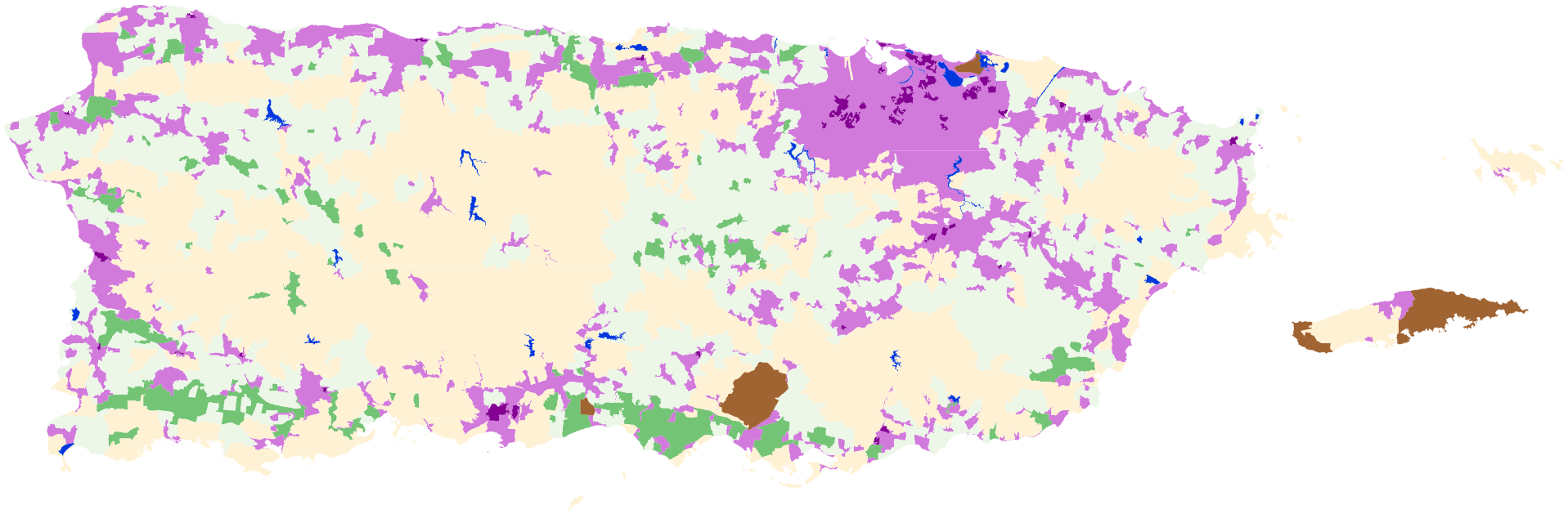






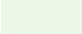




Stratification of Puerto Rico 2022



Legend

| | | | |
|---|---------------------------------|---|---------------------------|
|  | >25% Cultivated |  | <25% Cultivated: Woodland |
|  | Agri-Urban: >100 Homes Per Sqmi |  | Non-Agricultural |
|  | Commercial: >100 Homes Per Sqmi |  | Water |
|  | <25% Cultivated: Pasture | | |