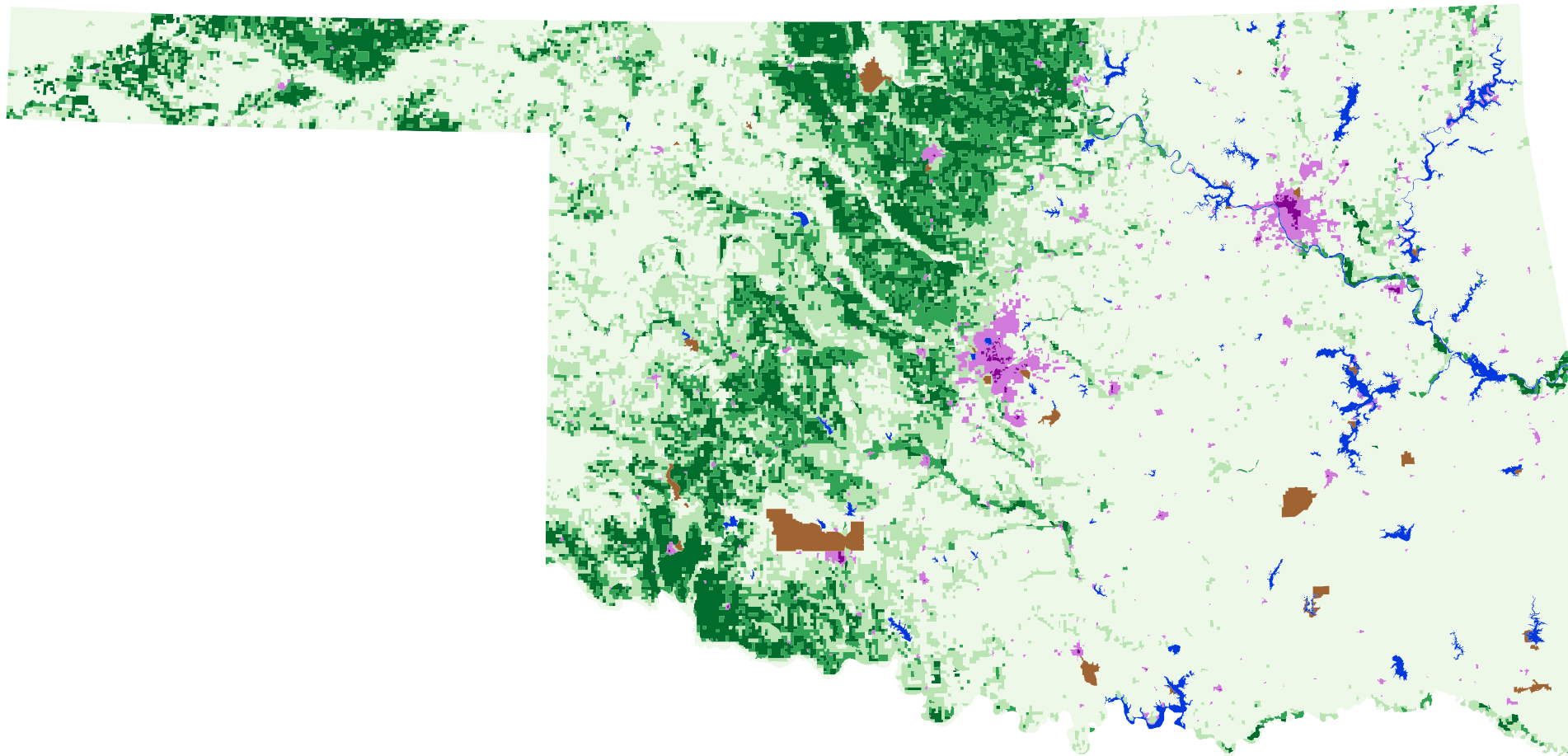


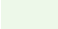




Stratification of Oklahoma 2013



Land Used Strata

	>75% Cultivated		Commercial: >100 homes/sq. mi.
	51-75% Cultivated		<15% Cultivated
	15-50% Cultivated		Non-Agricultural
	Agri-Urban: >100 homes/sq. mi.		Water

Unprojected, Geographic Coordinates



Prepared by Geospatial Science and Survey Section, 2014