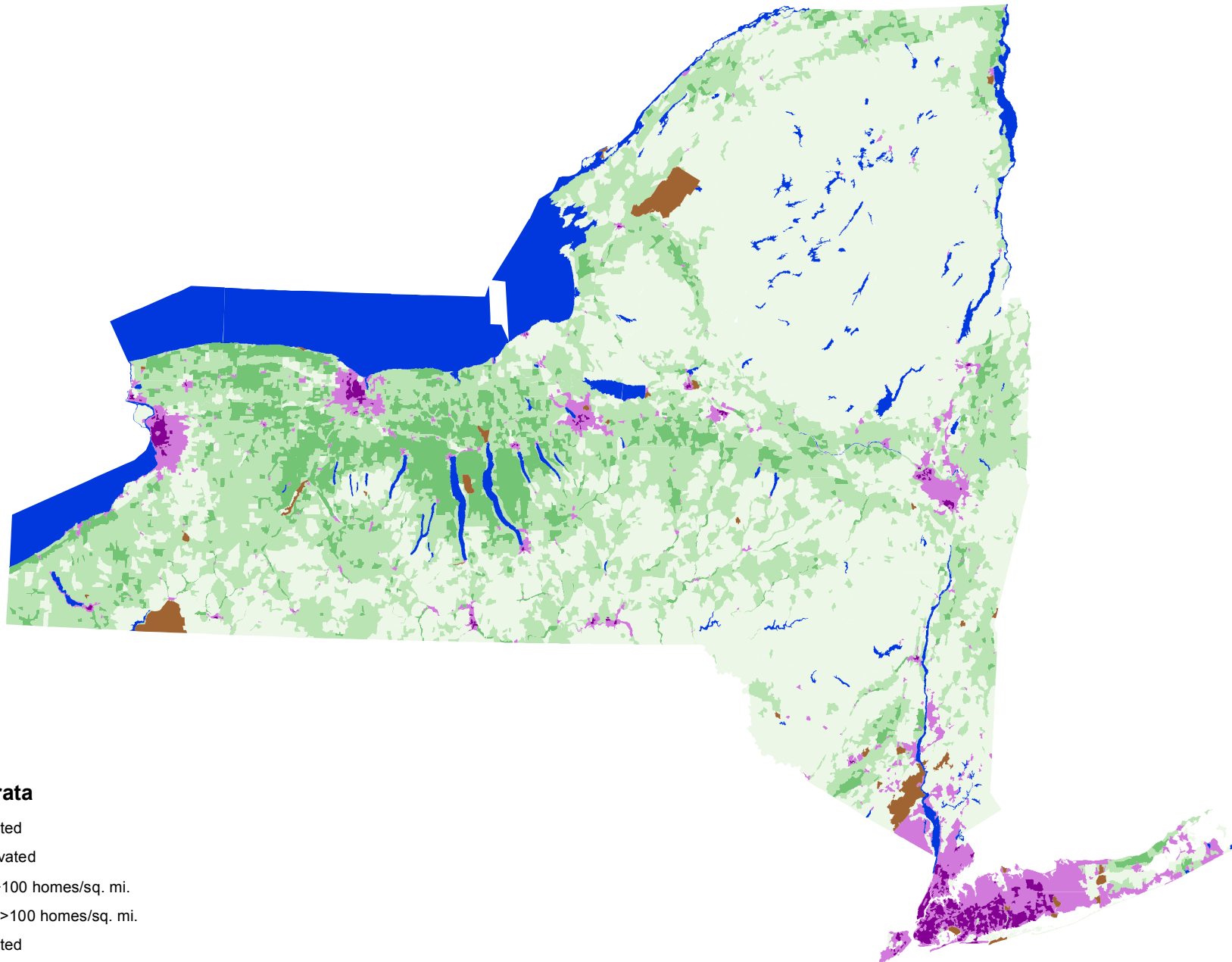


Stratification of New York 1995



Land Used Strata

- >50% Cultivated
- 15-50% Cultivated
- Agri-Urban: >100 homes/sq. mi.
- Commercial: >100 homes/sq. mi.
- <15% Cultivated
- Non-Agricultural
- Water

Unprojected, Geographic Coordinates



Prepared by Geospatial Science and Survey Section