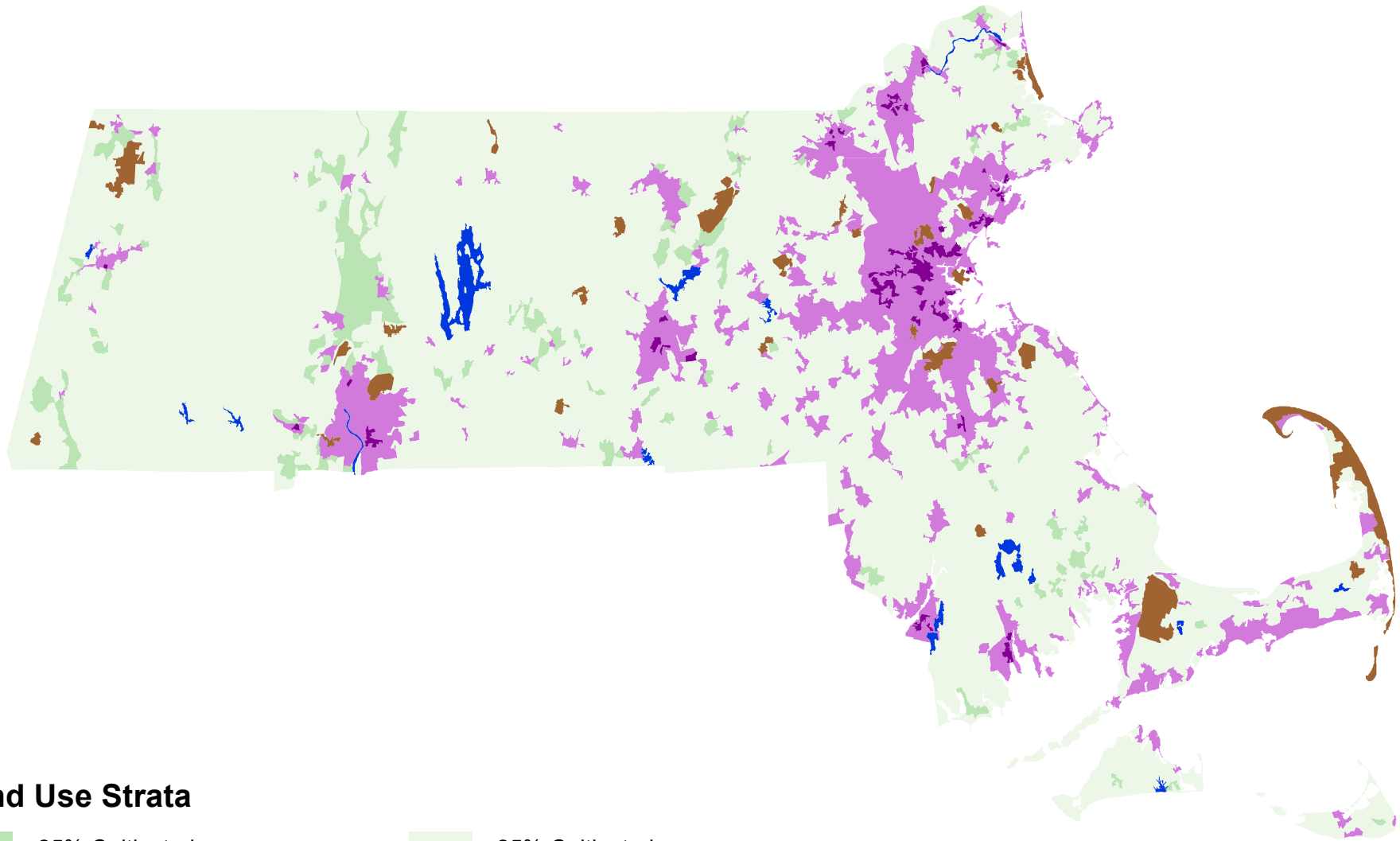








## Stratification of Massachusetts 1989



### Land Use Strata

	>25% Cultivated		<25% Cultivated
	Agri-Urban: >100 Homes Per Sqmi		Non-Agricultural
	Commercial: >100 Homes Per Sqmi		Water

Prepared by Geospatial Science and Survey Section



Coordinate System: NAD 1983 UTM Zone 18N  
Projection: Transverse Mercator