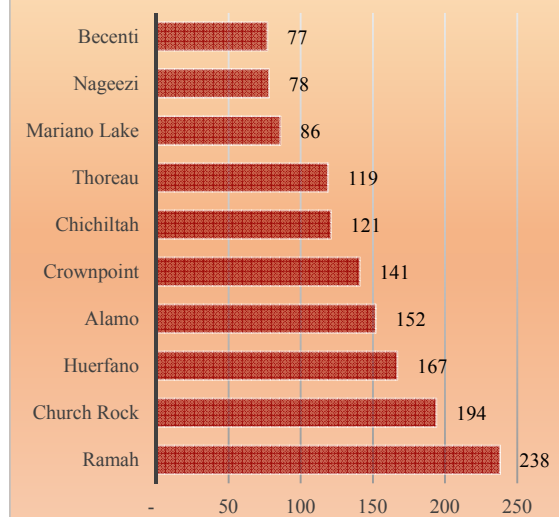


Ojo Encino Chapter

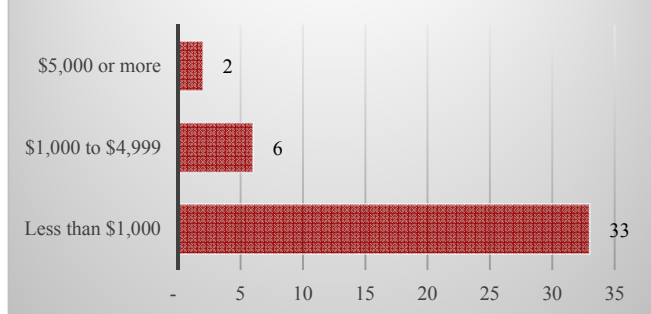
Total and Per Farm Overview

| | 2017 | % of Eastern Agency |
|-------------------------------|---------|---------------------|
| Number of Farms and Ranches | 41 | 1.7 |
| Total | | |
| | (\$) | |
| Market value of products sold | 41,100 | 1.1 |
| Crop sales | (D) | (D) |
| Livestock sales | (D) | (D) |
| Farm production expenses | 253,500 | 1.7 |
| Per farm average | | |
| | (\$) | |
| Market value of products sold | 1,003 | |
| Share of Sales by Type | | |
| | (%) | |
| Crop sales | (D) | |
| Livestock sales | (D) | |

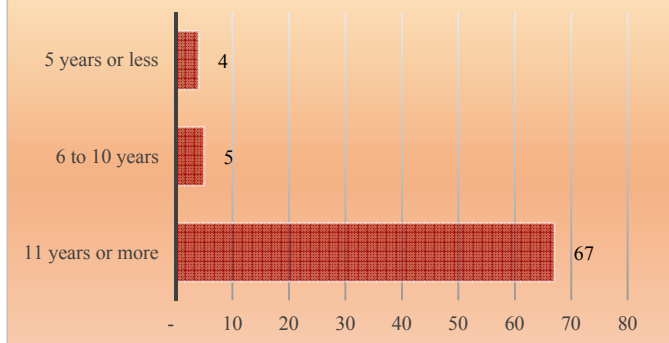
Number of Farms and Ranches, Selected Chapters, Eastern Agency



Farms and Ranches by Value of Sales



Years on Any Farm



Ojo Encino Chapter

Livestock and Crop Totals

| Livestock | Farms | Inventory | % of Eastern Agency |
|-------------------|-------|-----------|---------------------|
| Cattle and calves | 9 | 160 | 1.2 |
| Beef cows | 4 | 100 | 1.5 |
| Sheep and lambs | 30 | 753 | 3.1 |
| Horses and ponies | 25 | 122 | 2.4 |
| Goats | 21 | 195 | 2.5 |

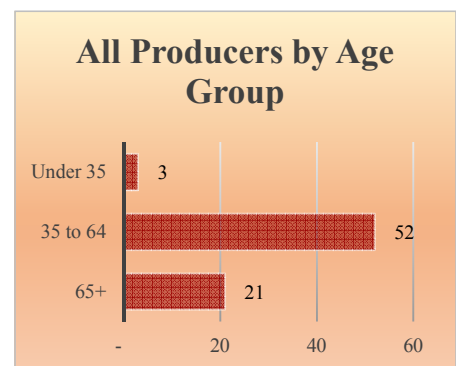


| Crops | Farms | Acres | % of Eastern Agency |
|--------------------------|-------|-------|---------------------|
| Corn, traditional, acres | 2 | (D) | (D) |
| Hay and haylage, acres | - | - | - |
| Vegetables, acres | 1 | (D) | (D) |
| Cantaloupes, acres | - | - | - |
| Honeydew melons, acres | - | - | - |
| Squash, all, acres | 1 | (D) | (D) |
| Watermelons, acres | 1 | (D) | (D) |

| | |
|------------------------------------|-------------|
| Total Producers^a | 76 |
| <i>Average age (years)</i> | <i>57.6</i> |

| Sex | Count |
|--------|-------|
| Female | 33 |
| Male | 43 |

| Other characteristics | Count |
|---------------------------|-------|
| With military service | 8 |
| New and beginning farmers | 9 |
| Young Producers | 3 |



See 2017 Census of Agriculture, U.S. Summary and State Data, for complete footnotes, explanations, definitions, commodity descriptions, and methodology. ^a Data collected for a maximum of four producers per farm. (D) Withheld to avoid disclosing data for individual operations. (NA) Not available. (-) Represents zero.