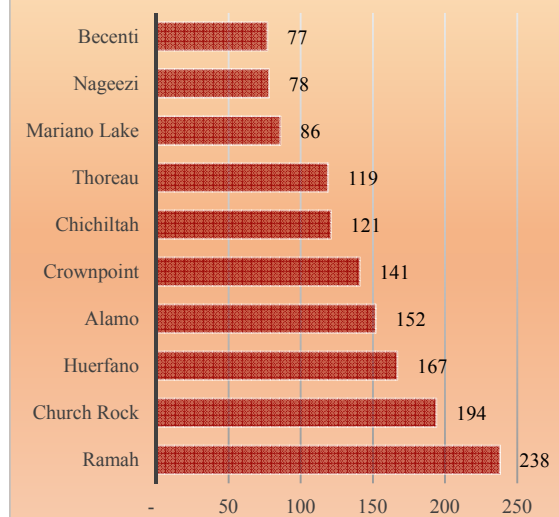


## Nahodishgish Chapter

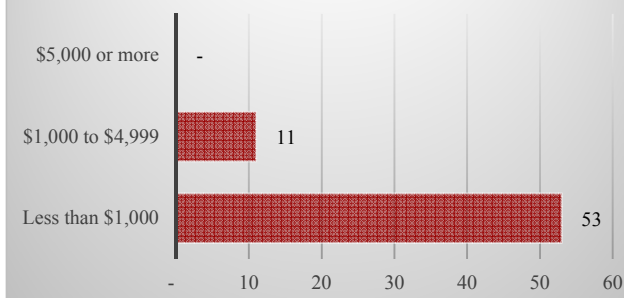
### Total and Per Farm Overview

	2017	% of Eastern Agency
Number of Farms and Ranches	64	2.6
<b>Total</b>		
	(\$)	
Market value of products sold	30,100	0.8
Crop sales	-	-
Livestock sales	30,100	1.0
Farm production expenses	511,300	3.4
<b>Per farm average</b>		
	(\$)	
Market value of products sold	471	
<b>Share of Sales by Type</b>		
	(%)	
Crop sales	0.0	
Livestock sales	100.0	

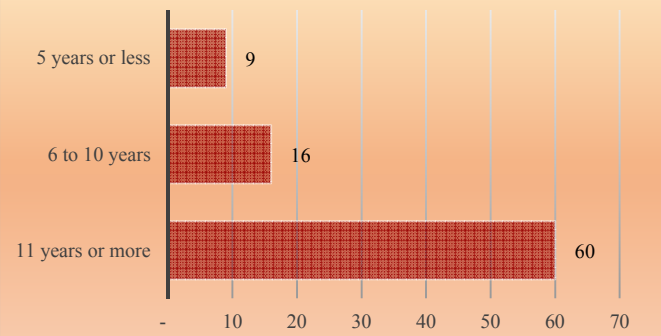
Number of Farms and Ranches, Selected Chapters, Eastern Agency



Farms and Ranches by Value of Sales



Years on Any Farm



## Nahodishgish Chapter

### Livestock and Crop Totals

	Farms	Inventory	% of Eastern Agency
<b>Livestock</b>			
Cattle and calves	31	221	1.7
Beef cows	4	22	0.3
Sheep and lambs	48	766	3.1
Horses and ponies	45	258	5.1
Goats	34	487	6.3

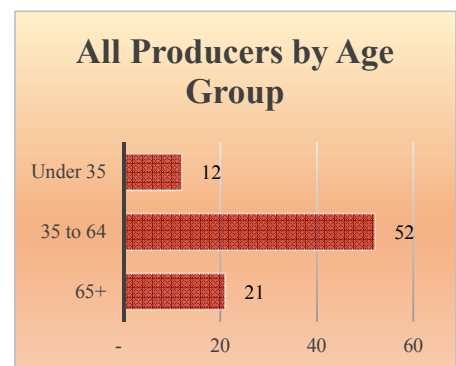


	Farms	Acres	% of Eastern Agency
<b>Crops</b>			
Corn, traditional, acres	-	-	-
Hay and haylage, acres	-	-	-
Vegetables, acres	-	-	-
Cantaloupes, acres	-	-	-
Honeydew melons, acres	-	-	-
Squash, all, acres	-	-	-
Watermelons, acres	-	-	-

<b>Total Producers<sup>a</sup></b>	<b>85</b>
<i>Average age (years)</i>	56.2

<b>Sex</b>	
Female	44
Male	41

<b>Other characteristics</b>	
With military service	11
New and beginning farmers	25
Young Producers	12



See 2017 Census of Agriculture, U.S. Summary and State Data, for complete footnotes, explanations, definitions, commodity descriptions, and methodology. <sup>a</sup> Data collected for a maximum of four producers per farm. (D) Withheld to avoid disclosing data for individual operations. (NA) Not available. (-) Represents zero.