



United States Department of Agriculture  
**National Agricultural Statistics Service**

---

---

**Small Grains Summary**  
**Grain Stocks**  
Executive Summary

Lance Honig, Chief  
Crops Branch



# Contents

Field Crops	Grain Stocks	Oilseed Stocks
Wheat	Corn	Soybeans
Barley	Wheat	Sunflower
Oats	Barley	Safflower
Rye	Oats	Mustard Seed
	Sorghum	

# Survey Overview

	September Ag Survey	Off- Farm Grain Stocks Survey
Survey Type	Farmer Reported	Off-Farm Grain Stock Facilities
Collection Method	Mail, Phone, Internet, Personal Interview	Mail, Phone, Internet, Personal Interview
Crops Included	Barley, Canola, Corn, Mustard Seed, Oats, Rye, Soybean, Safflower, Sorghum, Sunflower, Wheat	Barley, Corn, Mustard Seed, Oats, Soybean, Safflower, Sorghum, Sunflower, Wheat
States	All States Except CT, HI, MA, NH, RI, and VT	All States Except AK, HI, and NV
Sample Size	63,106	~ 8,500 Facilities
Collection Period	August 30 – September 16	August 30 – September 17



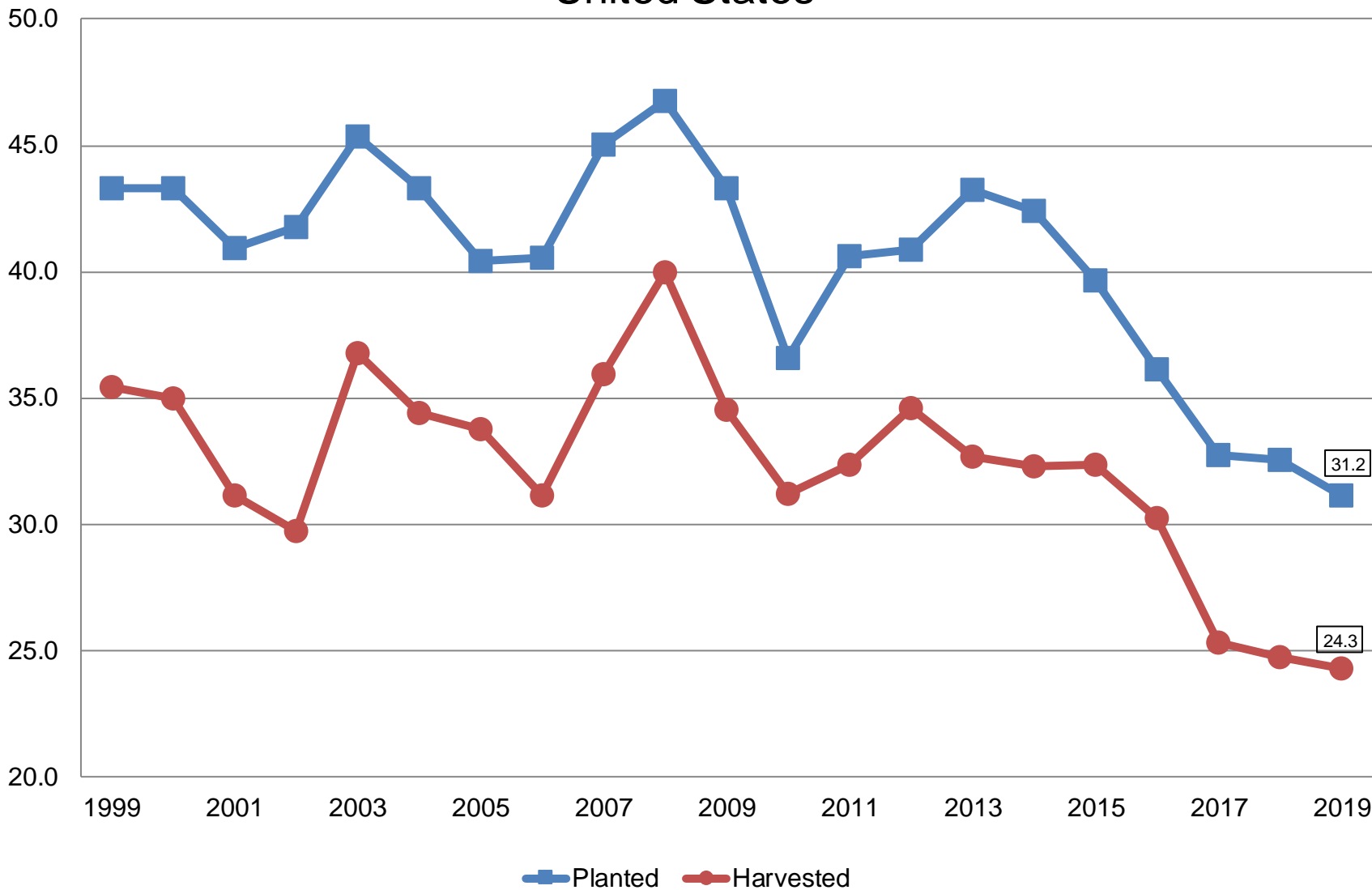
# Small Grains Annual Summary

Crop	Unit	September 2019	% Change From Previous Forecast	% Change From Previous Season
Wheat, Winter				
Planted	Mil Ac	31.2	-1.9	-4.2
Harvested	Mil Ac	24.3	-2.4	-1.7
Yield	Bu/Ac	53.6	+0.8	+11.9
Production	Bil Bu	1.30	-1.7	+10.1

# Winter Wheat Acres

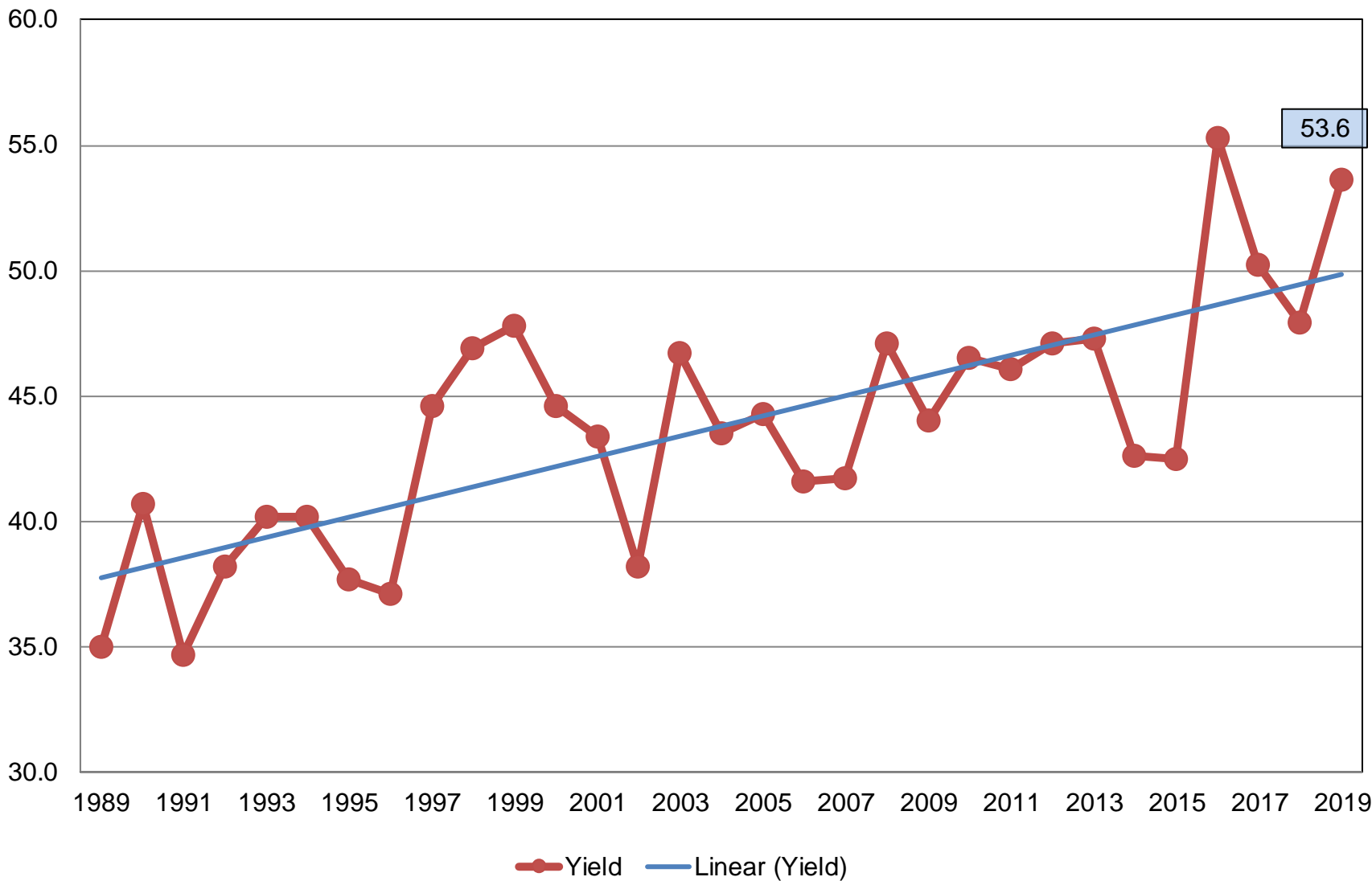
## United States

Million Acres



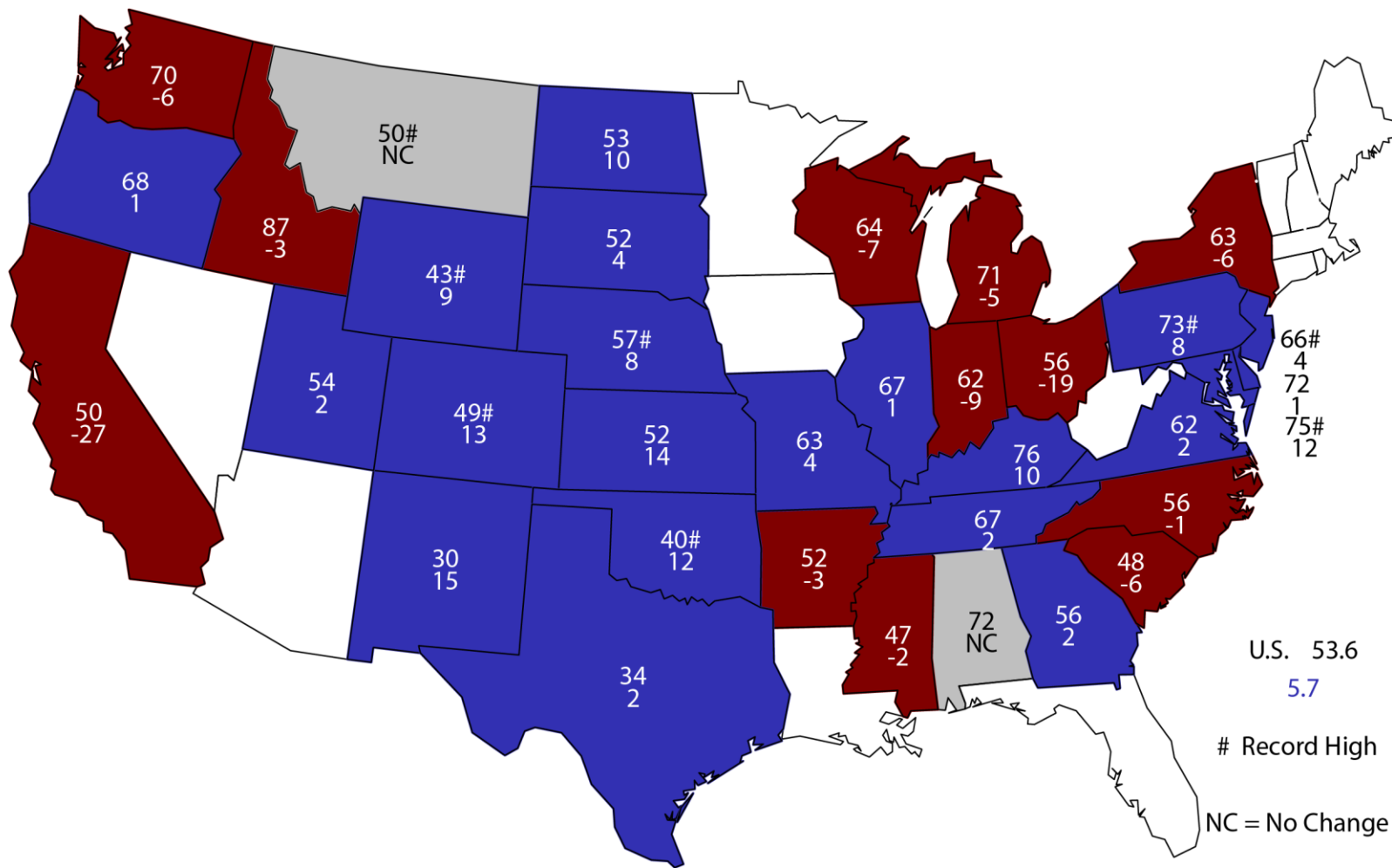
# Winter Wheat Yield United States

Bushels per Acre



# 2019 Winter Wheat Yield

## Bushels and Change From Previous Year





# Small Grains Annual Summary

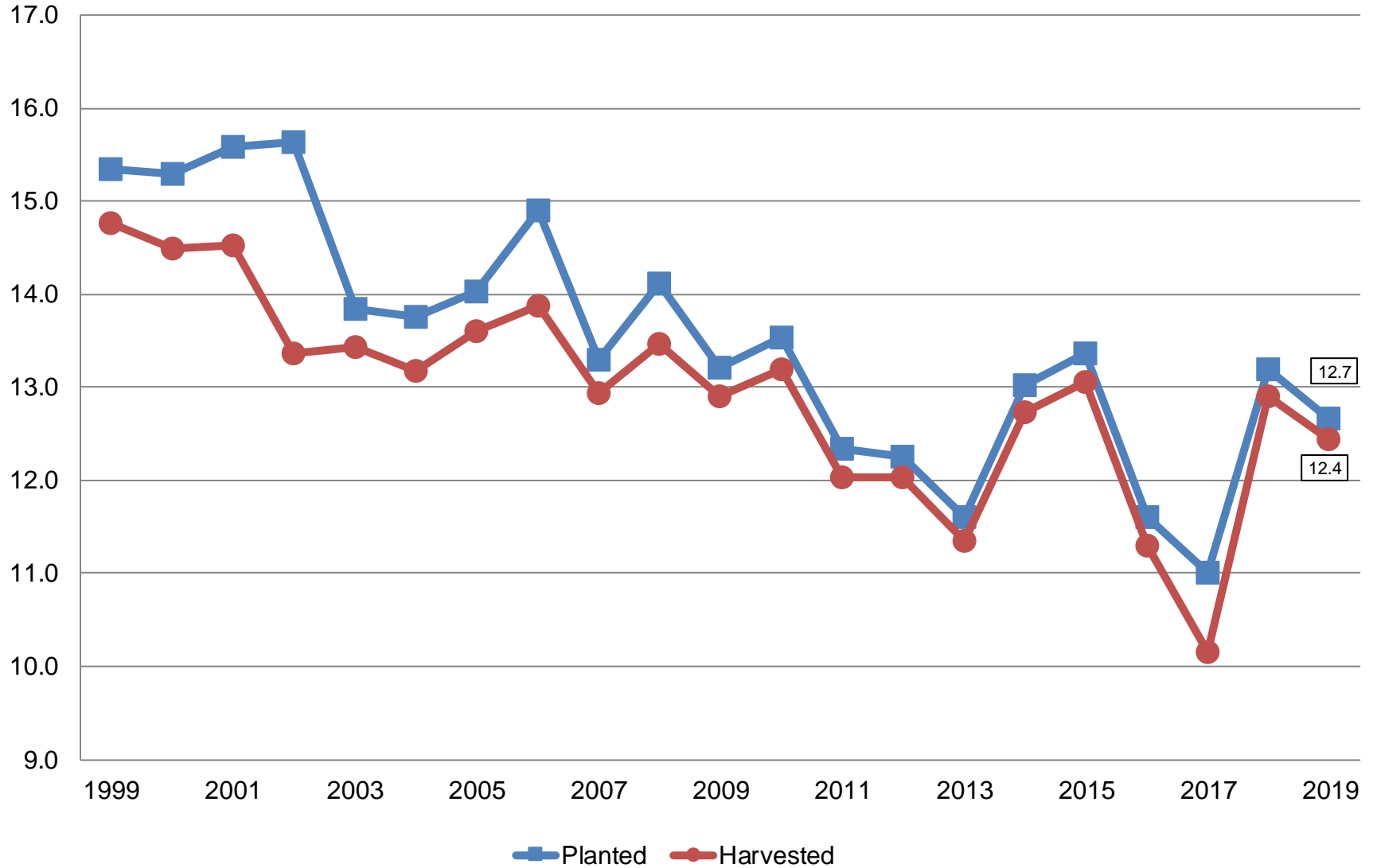
Crop	Unit	September 2019	% Change From Previous Forecast	% Change From Previous Season
Wheat, Spring				
Planted	Mil Ac	12.7	+1.9	-4.1
Harvested	Mil Ac	12.4	+2.6	-3.6
Yield	Bu/Ac	48.3	-1.8	NC
Production	Mil Bu	600	+0.6	-3.7





# Other Spring Wheat Acres United States

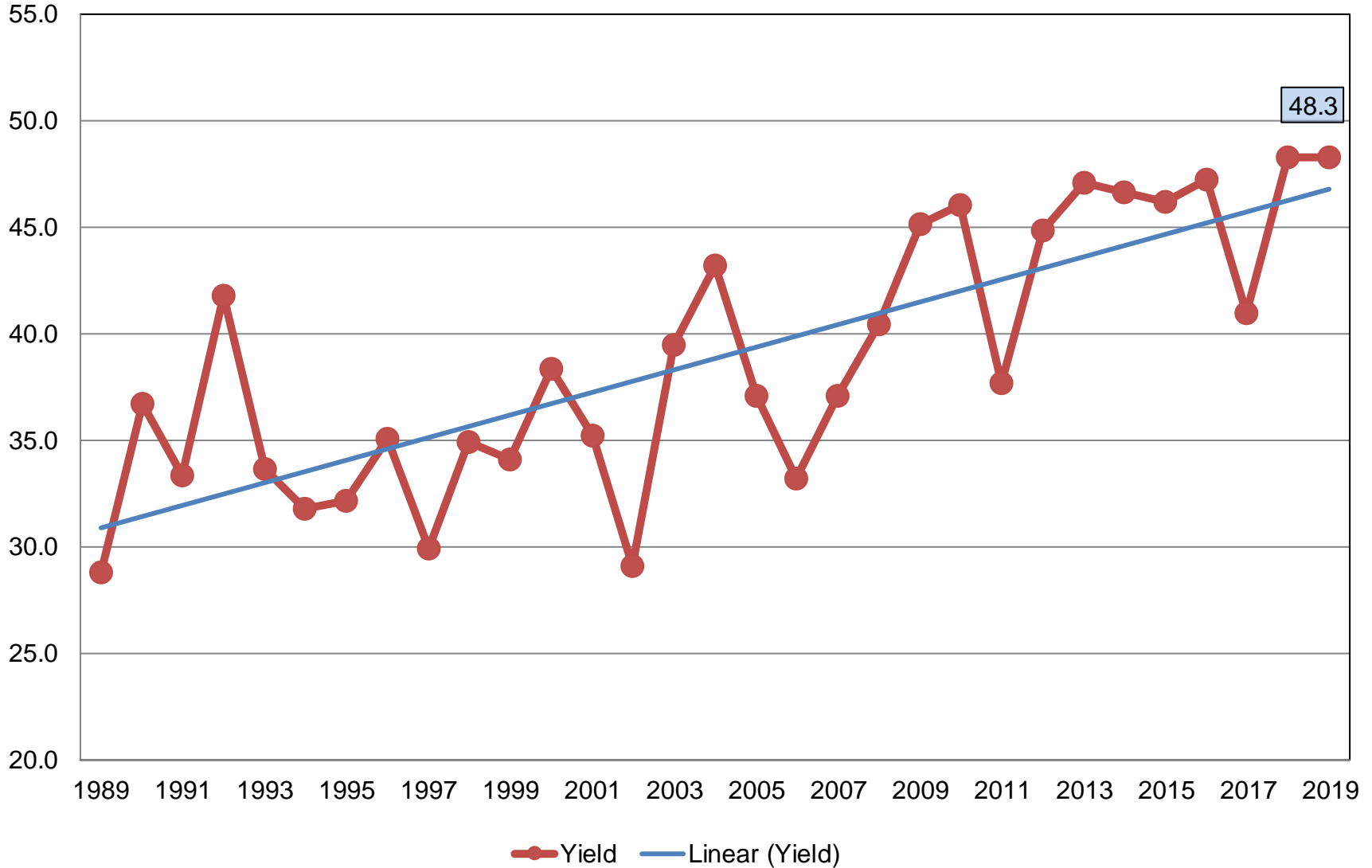
Million Acres



# Other Spring Wheat Yield

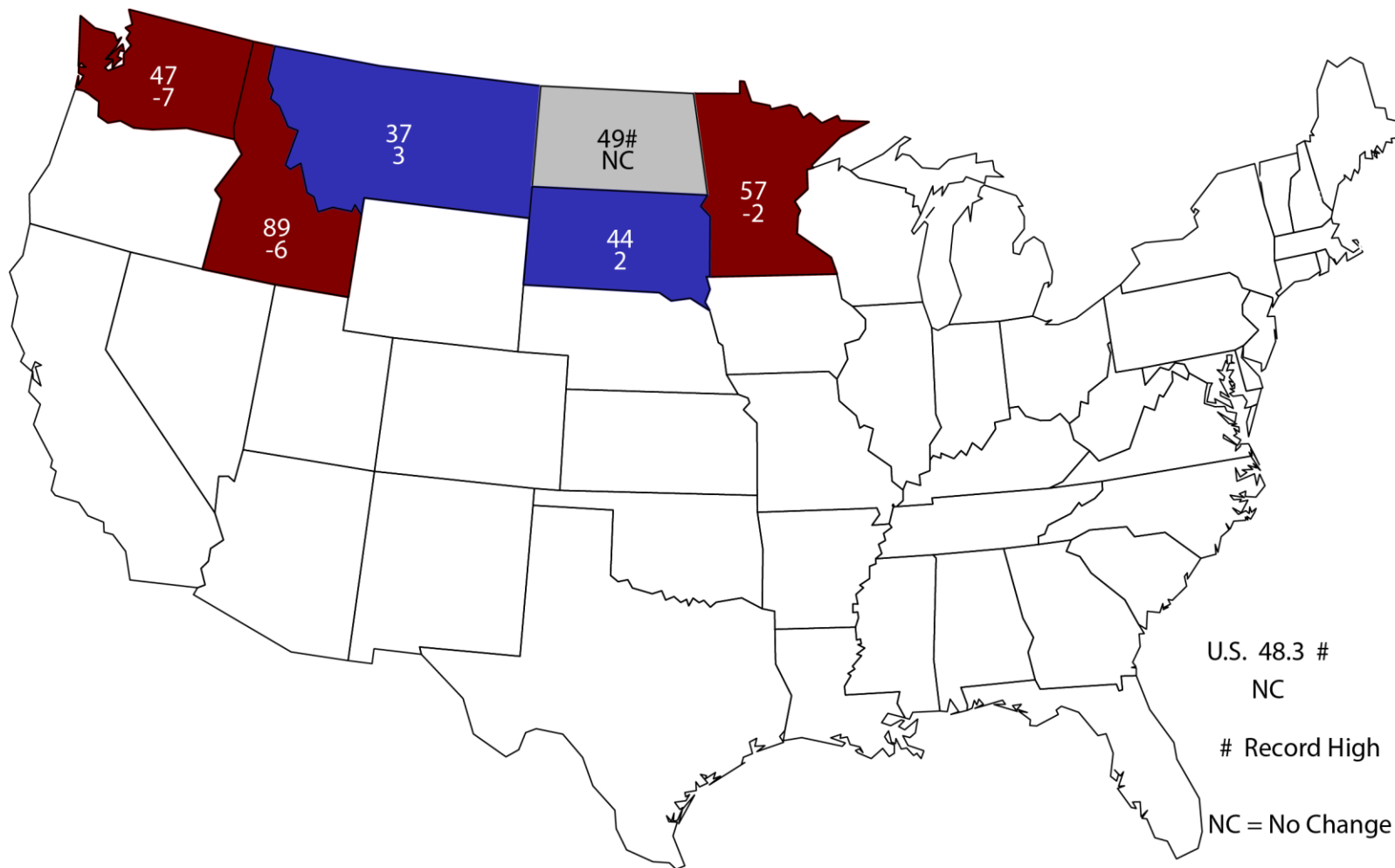
## United States

Bushels per Acre



# 2019 Other Spring Wheat Yield

## Bushels and Change From Previous Year





# Small Grains Annual Summary

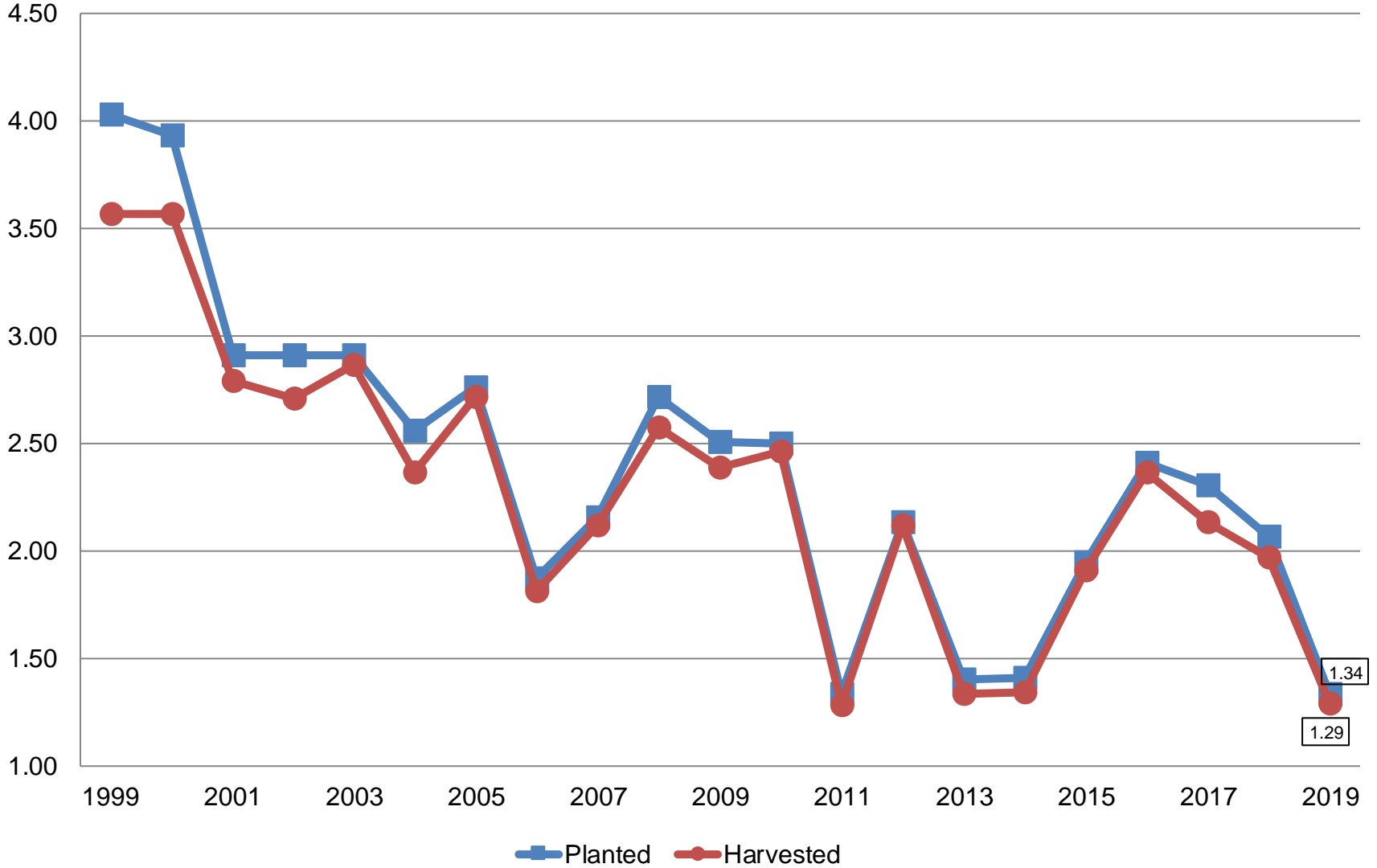
Crop	Unit	September 2019	% Change From Previous Forecast	% Change From Previous Season
Wheat, Durum				
Planted	Mil Ac	1.34	-4.4	-35.4
Harvested	Mil Ac	1.29	-4.9	-34.7
Yield	Bu/Ac	44.8	+5.9	+13.4
Production	Mil Bu	57.7	+0.7	-26.0



# Durum Wheat Acres

## United States

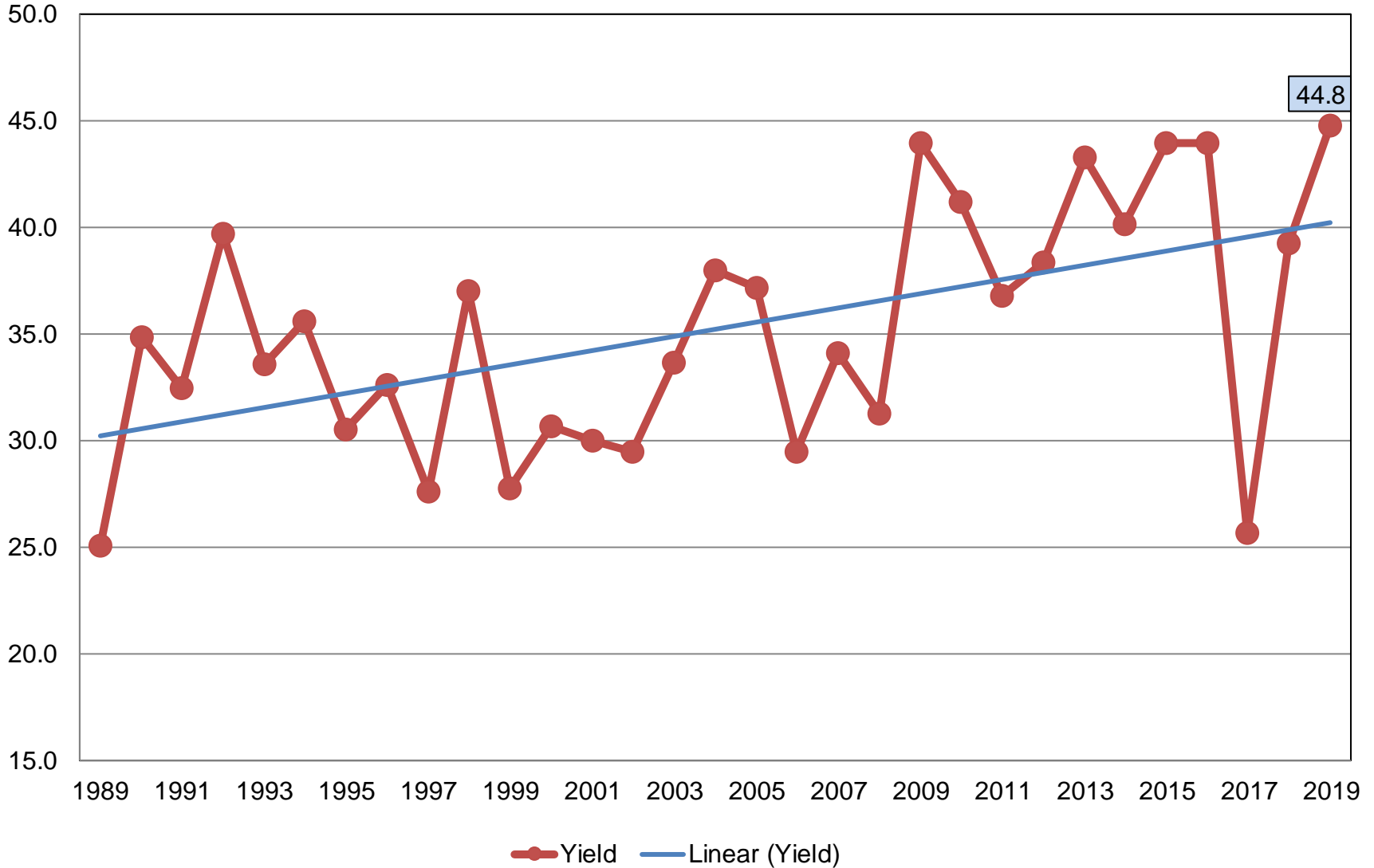
Million Acres



# Durum Wheat Yield

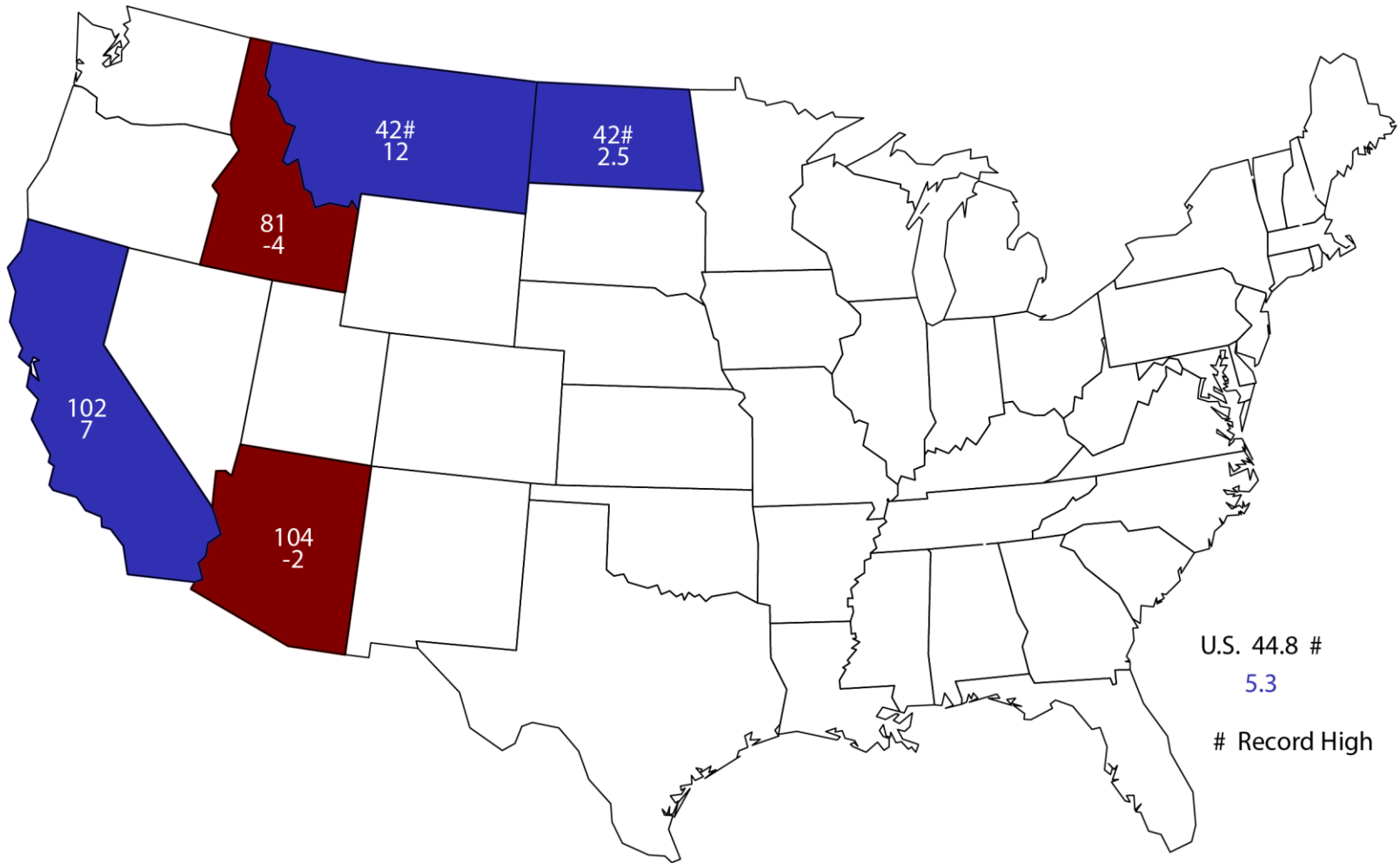
## United States

Bushels per Acre



# 2019 Durum Wheat Yield

## Bushels and Change From Previous Year



U.S. 44.8 #  
5.3  
# Record High



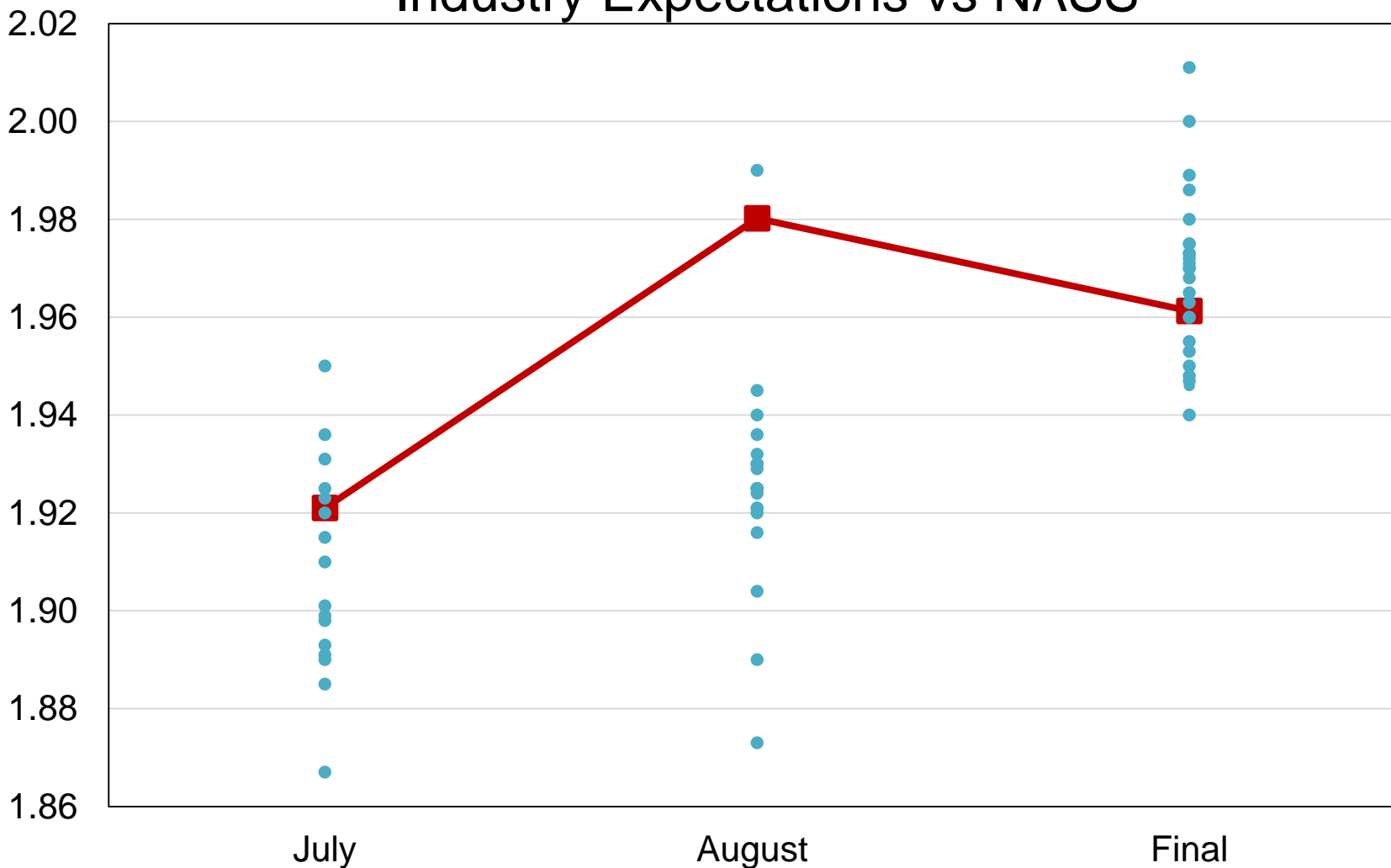
# Small Grains Annual Summary

Crop	Unit	September 2019	% Change From Previous Forecast	% Change From Previous Season
Wheat, All				
Planted	Mil Ac	45.2	-1.0	-5.6
Harvested	Mil Ac	38.1	-0.9	-3.9
Yield	Bu/Ac	51.6	NC	+8.4
Production	Bil Bu	1.96	-0.9	+4.1



# 2019 United States All Wheat Production Industry Expectations vs NASS

Billion Bushels

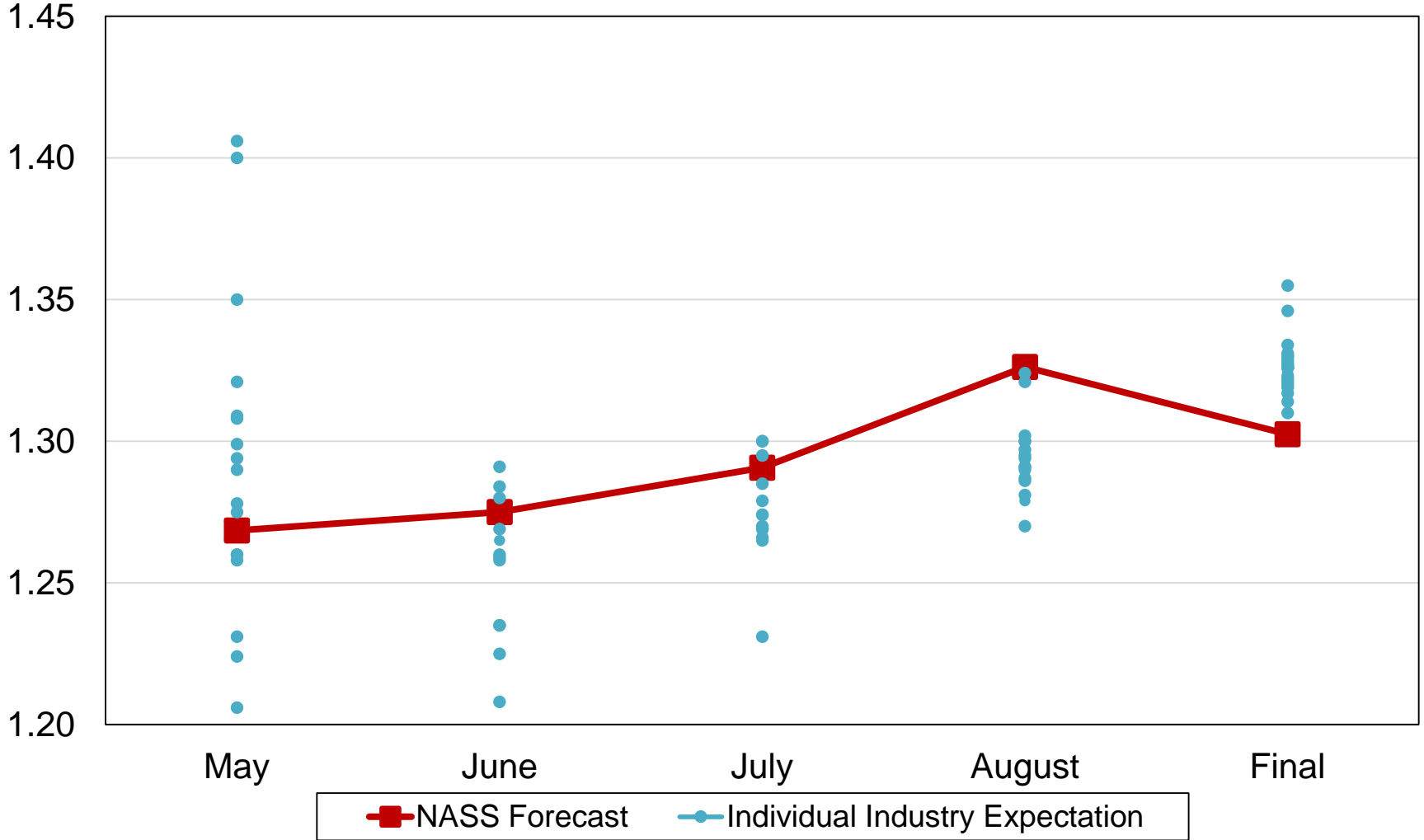


■ NASS Forecast    
 ● Individual Industry Expectation



# 2019 United States Winter Wheat Production Industry Expectations vs NASS

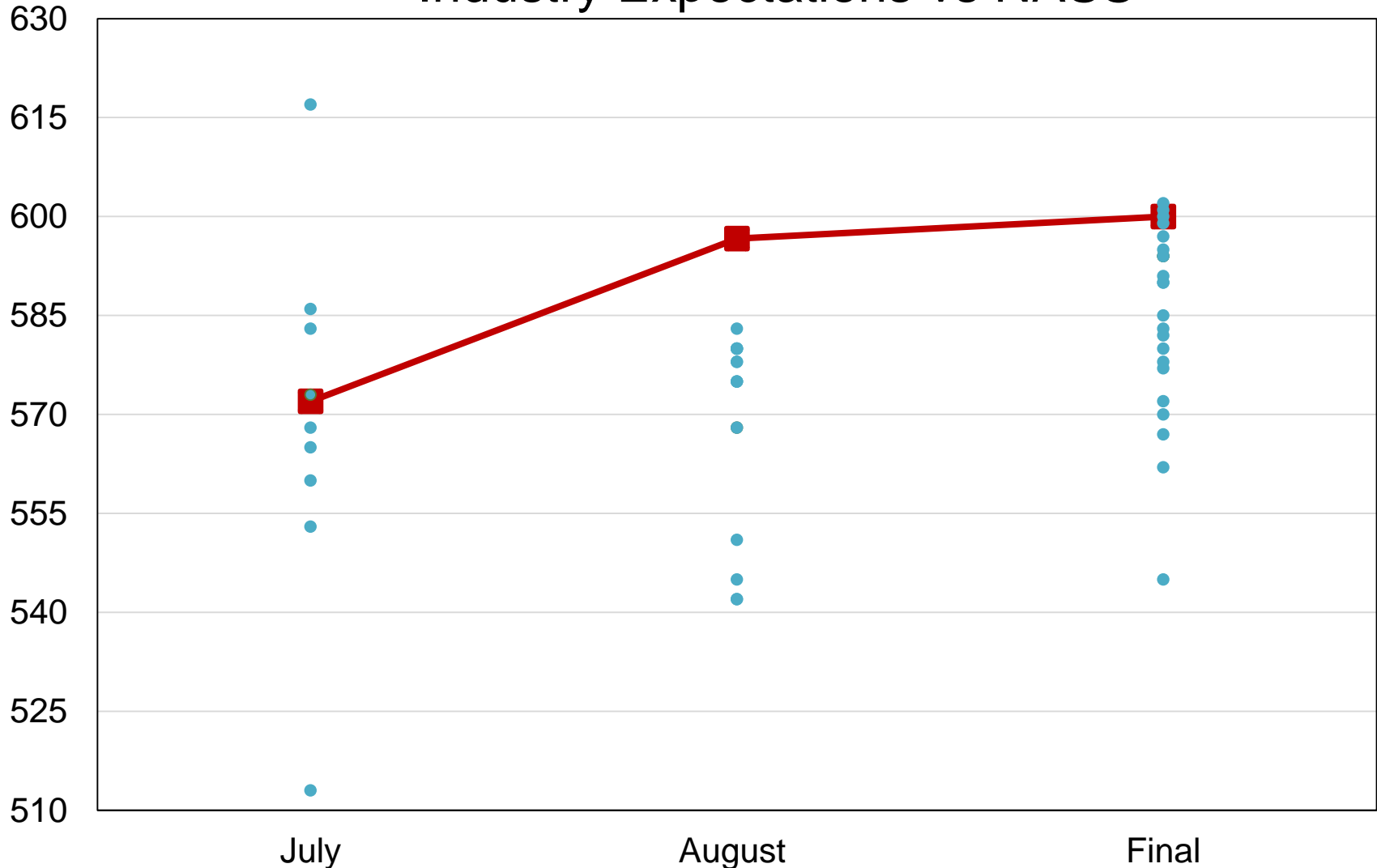
Billion Bushels





# 2019 United States Other Spring Wheat Production Industry Expectations vs NASS

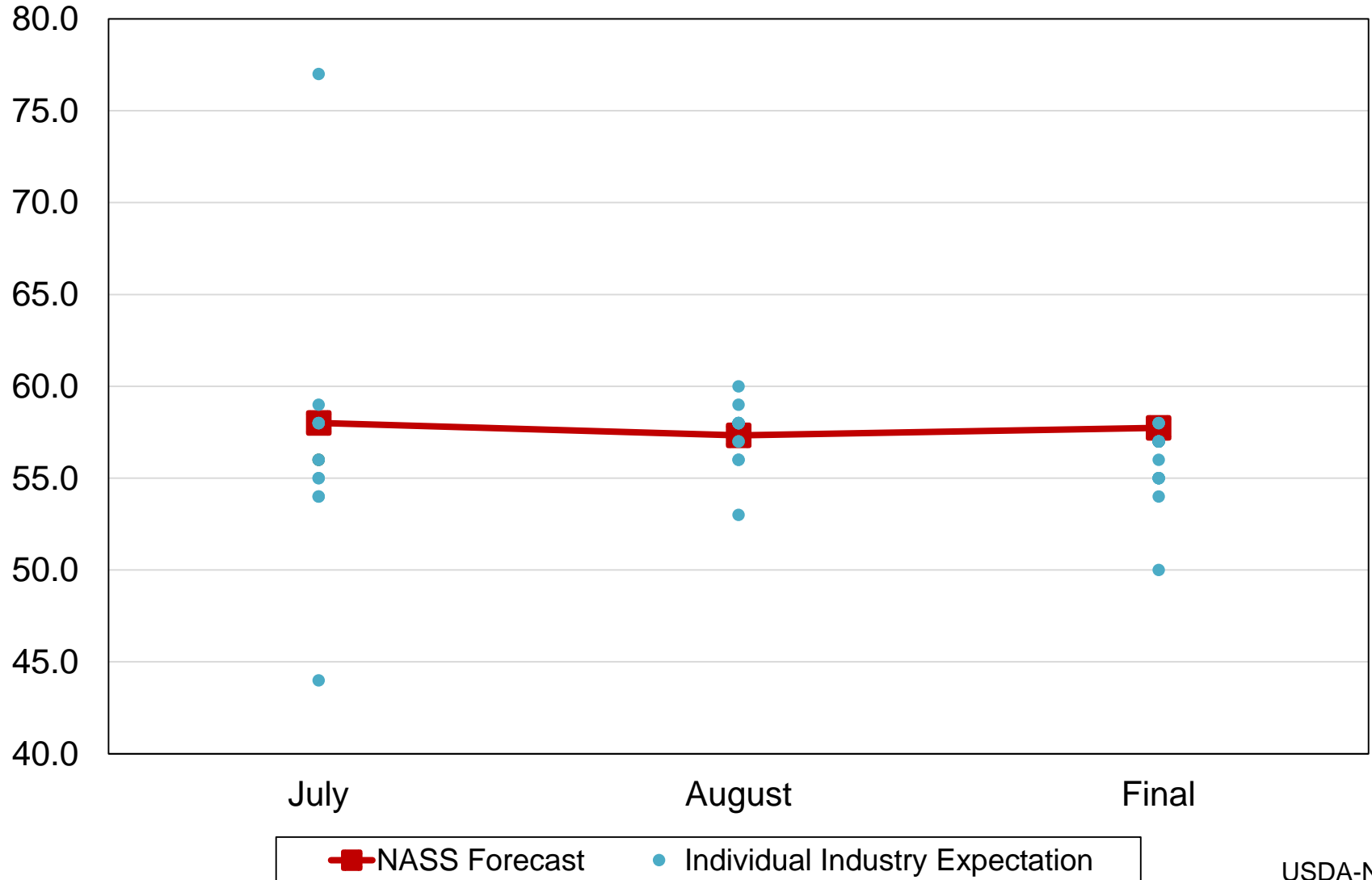
Million Bushels



■ NASS Forecast    ● Individual Industry Expectation

# 2019 United States Durum Wheat Production Industry Expectations vs NASS

Million Bushels





# Small Grains Annual Summary

Crop	Unit	September 2019	% Change From Previous Forecast	% Change From Previous Season
Barley				
Planted	Mil Ac	2.72	-4.8	+6.8
Harvested	Mil Ac	2.21	-5.0	+11.7
Yield	Bu/Ac	77.4	+4.7	-0.1
Production	Mil Bu	171	-0.5	+11.6



# Small Grains Annual Summary

Crop	Unit	September 2019	% Change From Previous Forecast	% Change From Previous Season
Oats				
Planted	Mil Ac	2.81	+10.2	+2.3
Harvested	Mil Ac	0.842	-7.4	-2.7
Yield	Bu/Ac	64.4	-3.0	-0.8
Production	Mil Bu	54.2	-10.3	-3.4



# Small Grains Annual Summary

Crop	Unit	September 2019	% Change From Previous Forecast	% Change From Previous Season
Rye				
Planted	Mil Ac	1.87	-0.5	-7.3
Harvested	Mil Ac	0.310	+4.0	+13.6
Yield	Bu/Ac	34.3	NA	+11.0
Production	Mil Bu	10.6	NA	+26.0



# Percent of Acres Left to be Harvested

## United States

Crop	2017	2018	2019
	<i>Percent</i>		
Other Spring Wheat	8.1	10.3	35.2
Durum Wheat	8.5	28.5	56.7
Barley	7.0	10.7	17.7
Oats	13.4	10.1	16.2

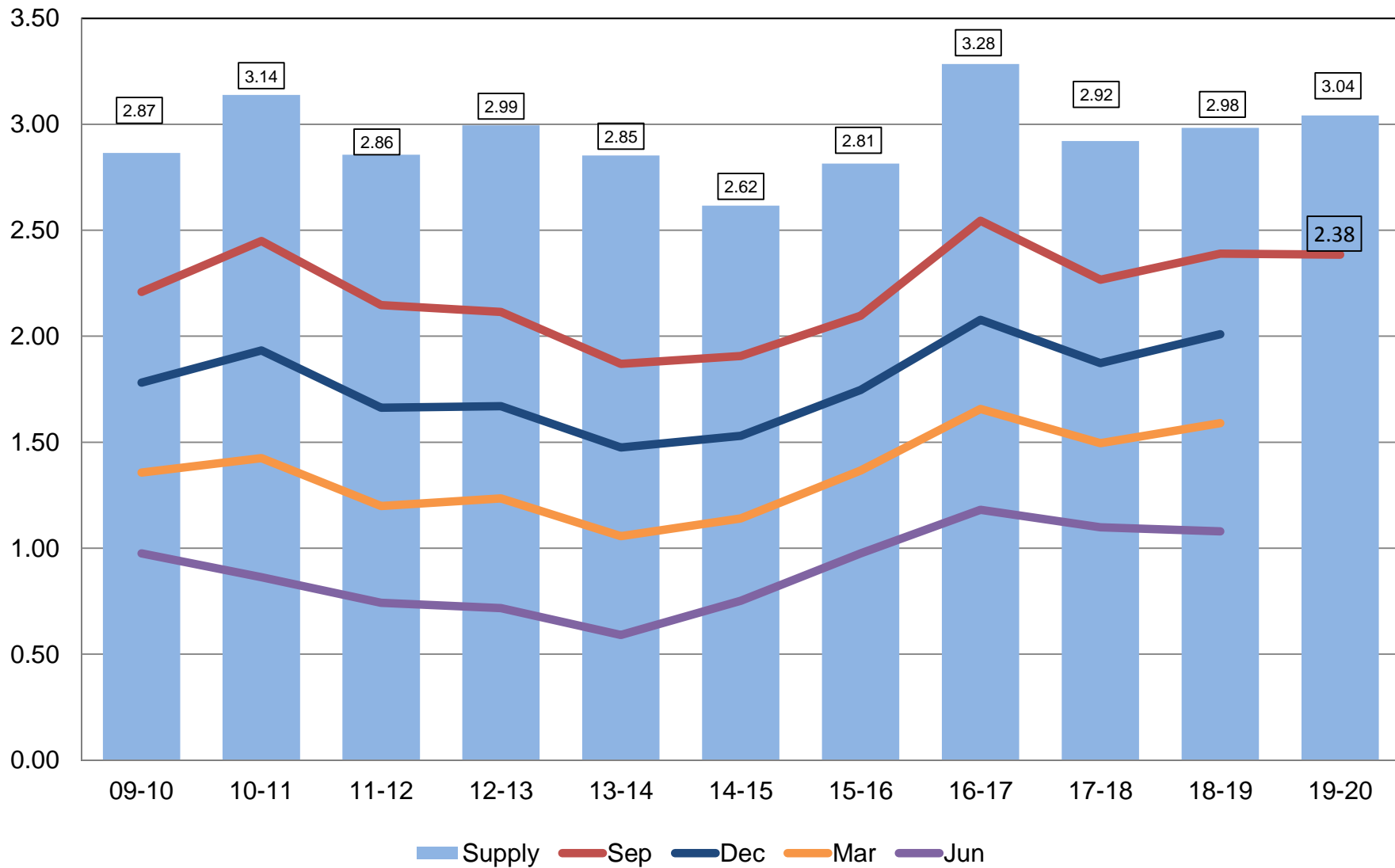






# All Wheat Stocks United States

Billion Bushels

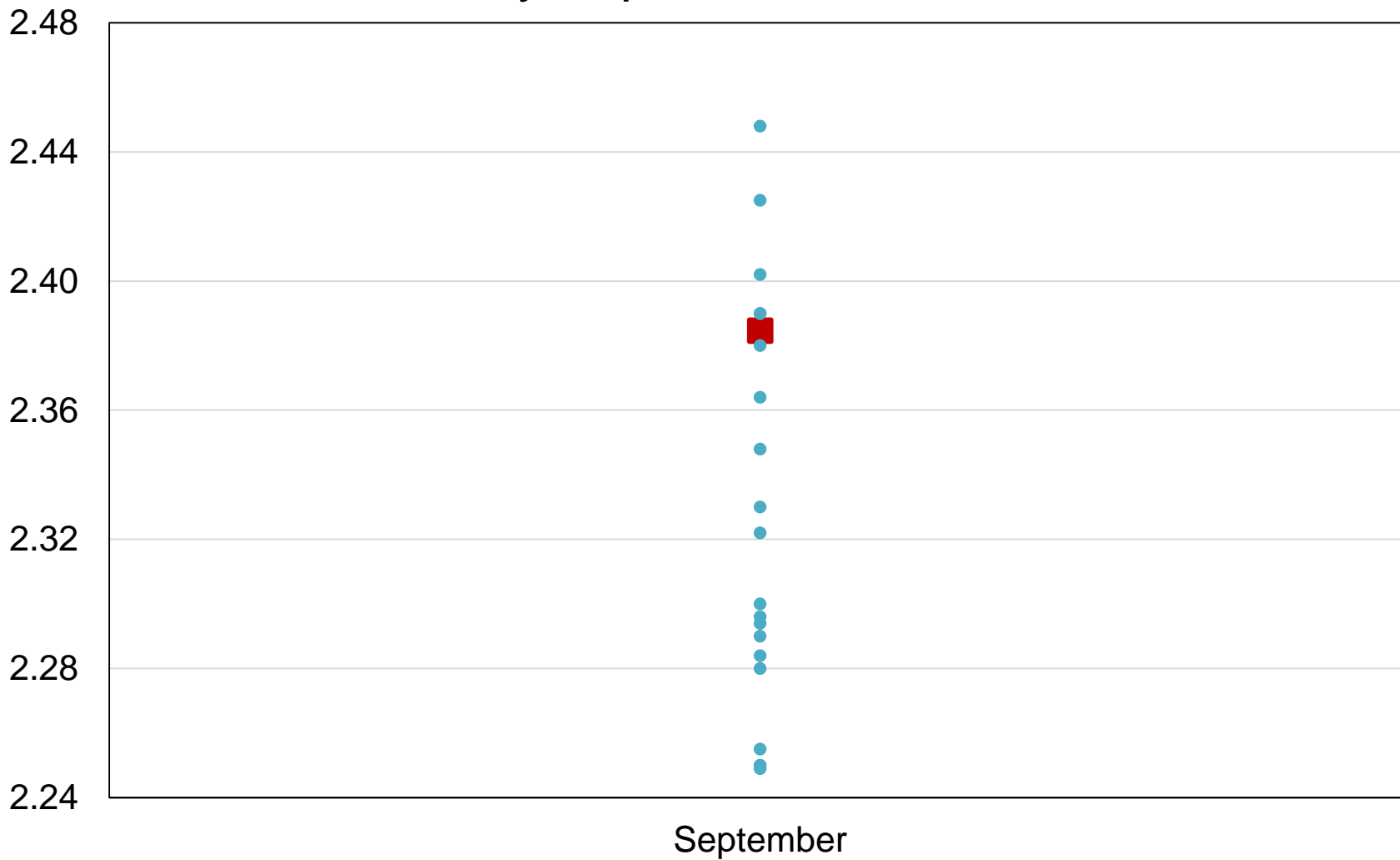




Billion Bushels



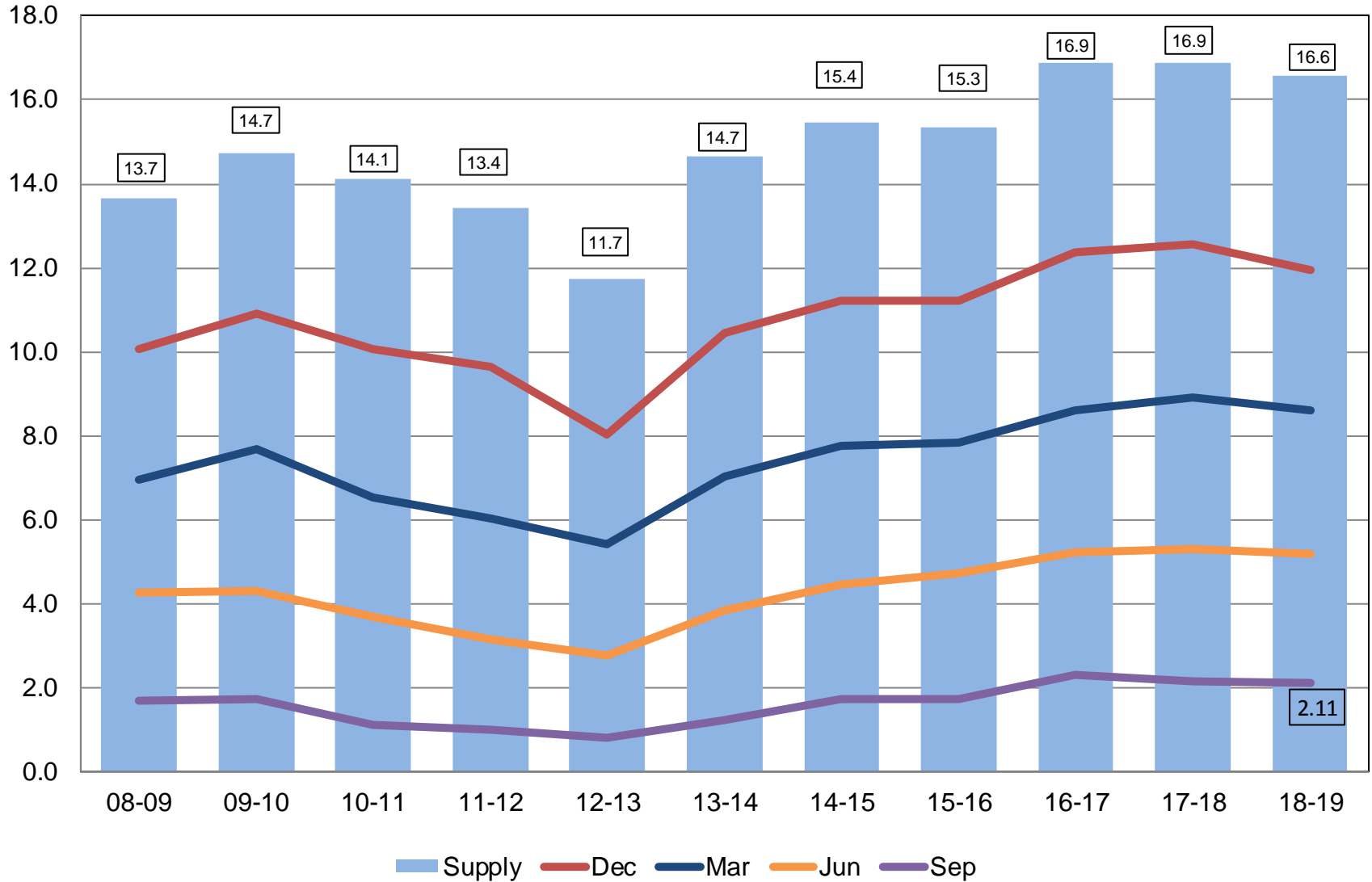
# 2019 United States All Wheat Stocks Industry Expectations vs NASS



■ NASS Forecast    ● Individual Industry Expectation

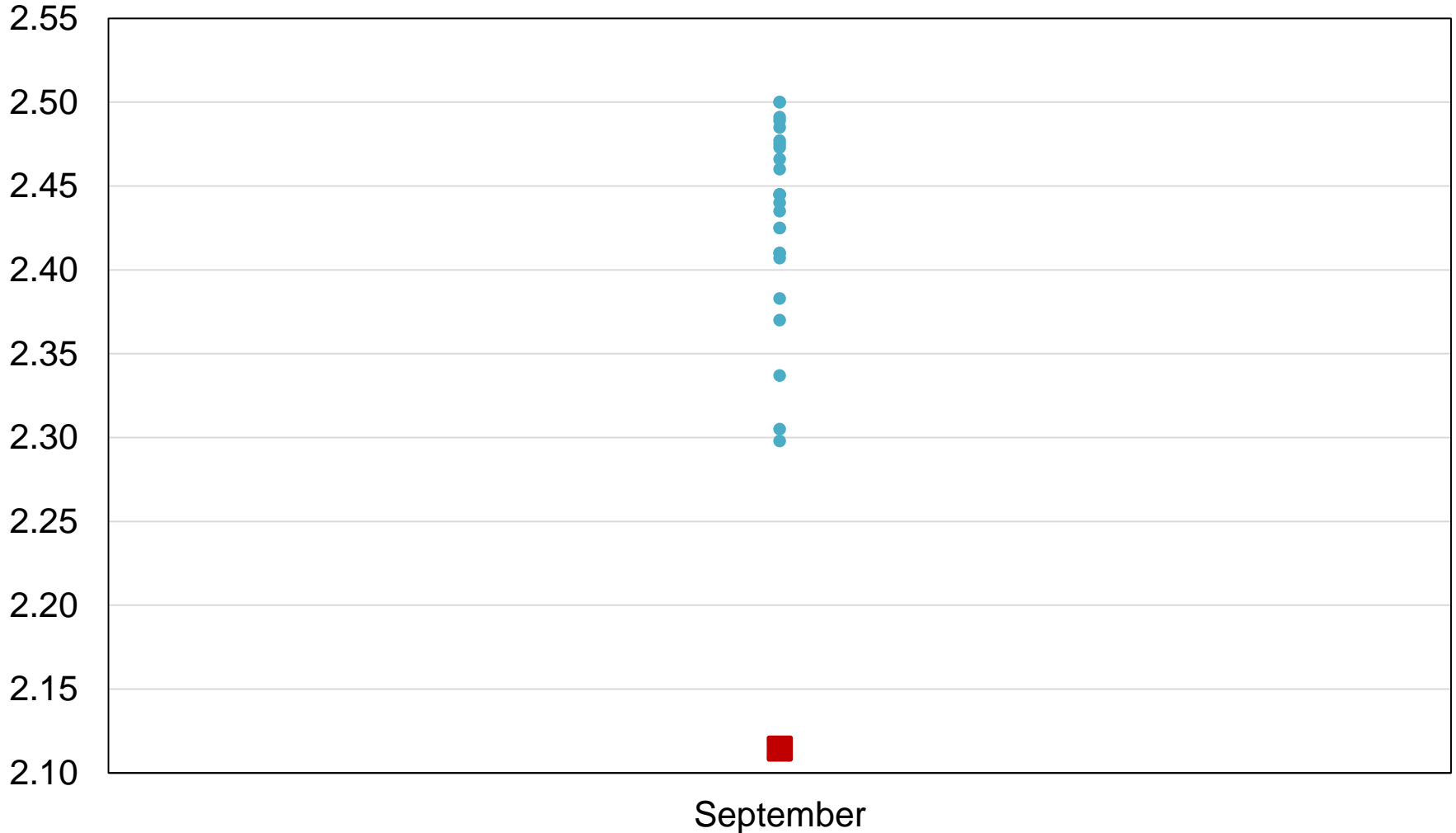
# Corn Stocks United States

Billion Bushels



# 2019 United States Corn Stocks Industry Expectations vs NASS

Billion Bushels

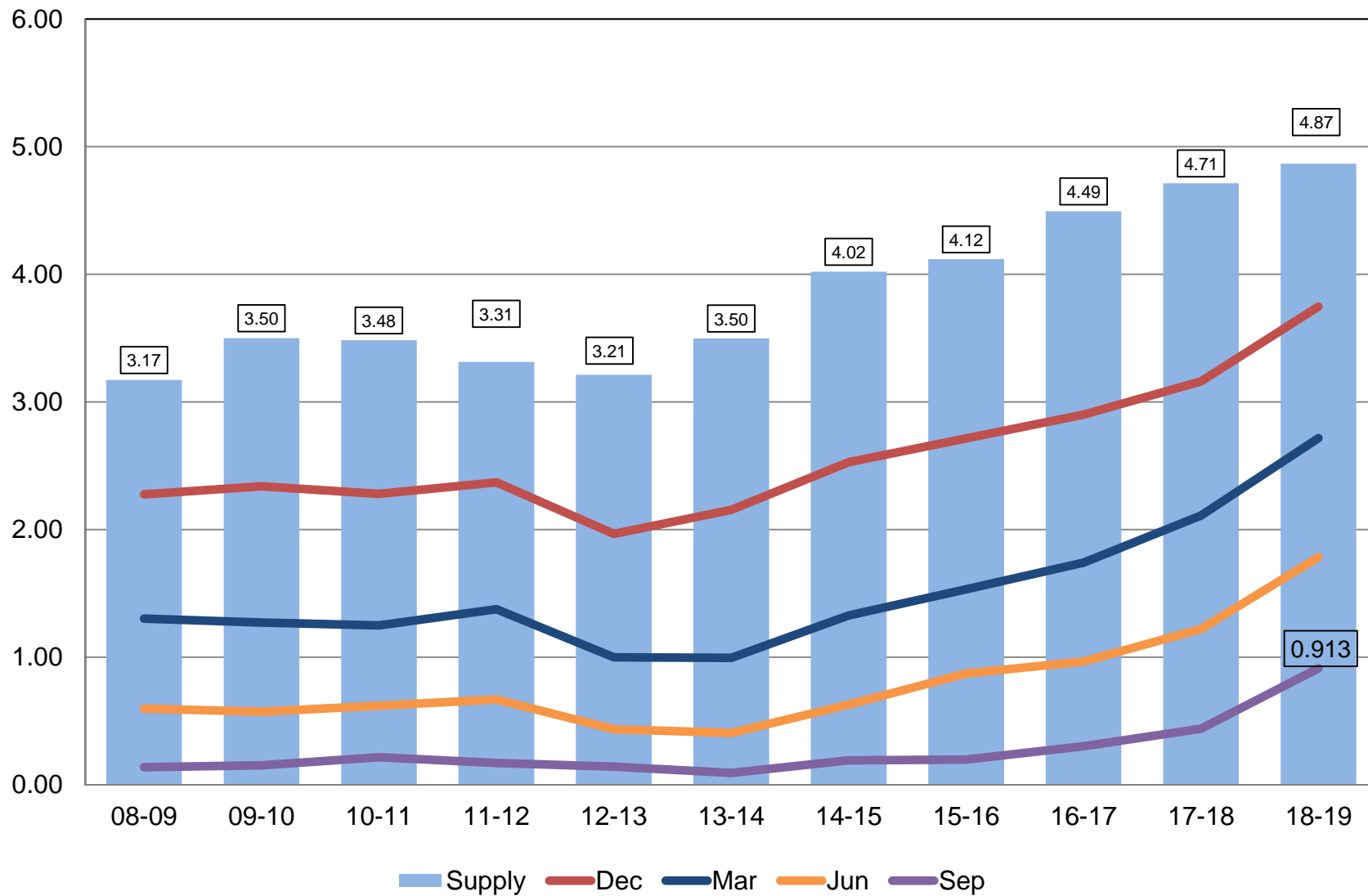


NASS Forecast      Individual Industry Expectation



# Soybean Stocks United States

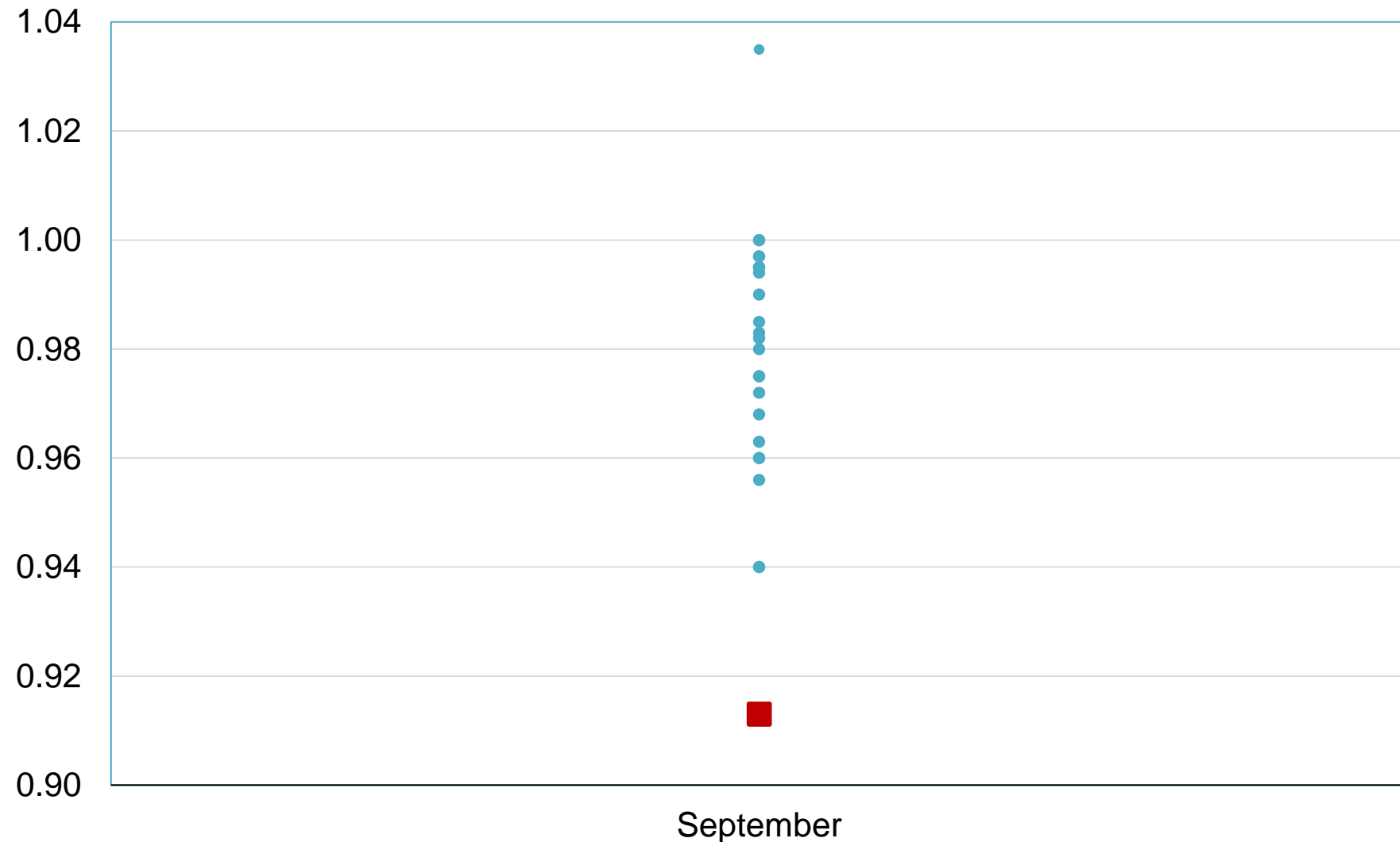
Billion Bushels





# 2019 United States Soybean Stocks Industry Expectations vs NASS

Billion Bushels



NASS Forecast      Individual Industry Expectation



# 2018 Soybean Crop

	Previous Estimates	Sept 30 Estimates	Change
	<i>Million Bushels</i>		
Sept 1, 2018 Beginning Stocks	438	438	NC
2018 Production	4,544	4,428	-116
Imports	*17	*17	NC
<b>Total Supply</b>	<b>4,999</b>	<b>4,883</b>	<b>-116</b>
Crushings	*2,085	*2,085	NC
Exports	*1,745	*1,745	NC
Seed	*89	*89	NC
Measured Disappearance	*3,919	*3,919	NC
Ending Stocks	*1,005	913	-92
Residual	75	51	-24

\*WAOB Forecast – September WASDE Report





# September 1, 2019 Grain Stocks

Crop	Unit	September 2019	% Change From Previous Estimate	% Change From Previous Year
Stocks				
Barley	Mil Bu	192	NA	+9.6
Oats	Mil Bu	61.2	NA	-18.1
Sorghum	Mil Bu	63.7	NA	+82.7



# September 1, 2019 Oilseed Stocks

Crop	Unit	September 2019	% Change From Previous Estimate	% Change From Previous Year
Stocks				
All Sunflower	Mil Lbs	286	NA	-25.9
Safflower	Mil Lbs	9.23	NA	-13.9



# Upcoming Reports

Release Date	Report Title
October 1	CAIR: Cotton, Fats & Oils, and Grain Crushings Census: Race, Ethnicity, & Gender Profiles
October 10	Crop Production Cotton Ginnings
October 23	Cotton Ginnings
October 25	Cattle on Feed Rice Stocks
October 31	Ag Prices



# USDA Data Users' Meeting

## **USDA NASS Data Users' Meeting** **Tuesday, October 15, 2019**

American Farm Bureau Federation  
600 Maryland Ave SW #1000w  
Washington, DC 20024



# STAT CHAT SERIES

You can tweet questions in advance to [@usda\\_nass](https://twitter.com/usda_nass).



Join [@usda\\_nass](https://twitter.com/usda_nass) on Twitter using #StatChat to discuss the *Grain Stocks* and *Small Grains Summary* reports with Lance Honig.

**MONDAY, SEPT. 30 @ 1PM ET**

**#STATCHAT**





United States Department of Agriculture  
**National Agricultural Statistics Service**

---

---

**All Reports Available At**  
[www.nass.usda.gov](http://www.nass.usda.gov)

**For Questions**  
202-720-2127  
800-727-9540  
[nass@nass.usda.gov](mailto:nass@nass.usda.gov)