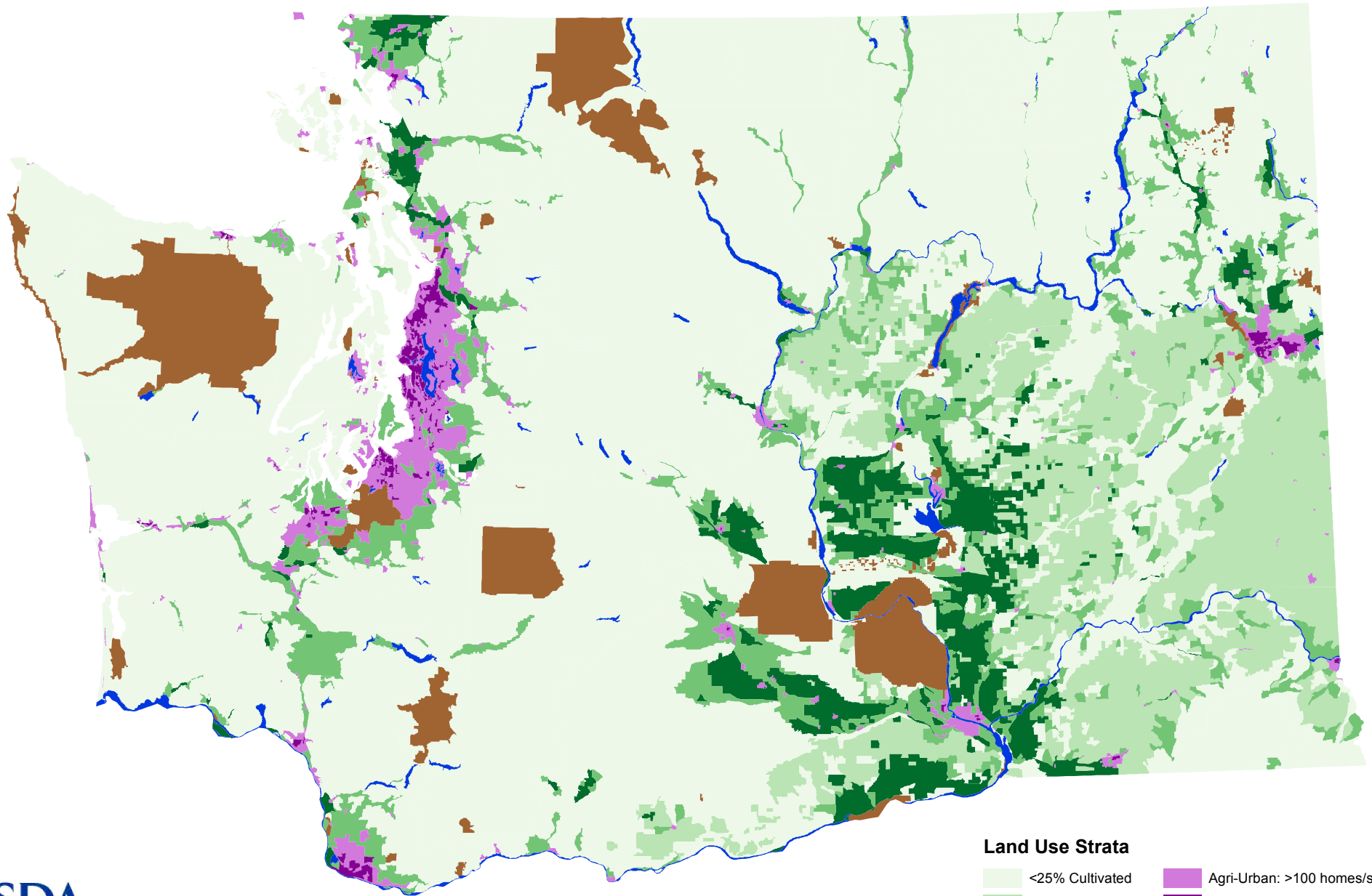


# Stratification of Washington 2009



Projection: Washington State Plane, North

## Land Use Strata

<25% Cultivated	Agri-Urban: >100 homes/sq. mi.
>33% Dryland Grain	Commercial: >100 homes/sq. mi.
>75% Cultivated	Non-Agricultural
25-75% Cultivated	Water

Prepared by Geospatial Science and Survey Section, 2014