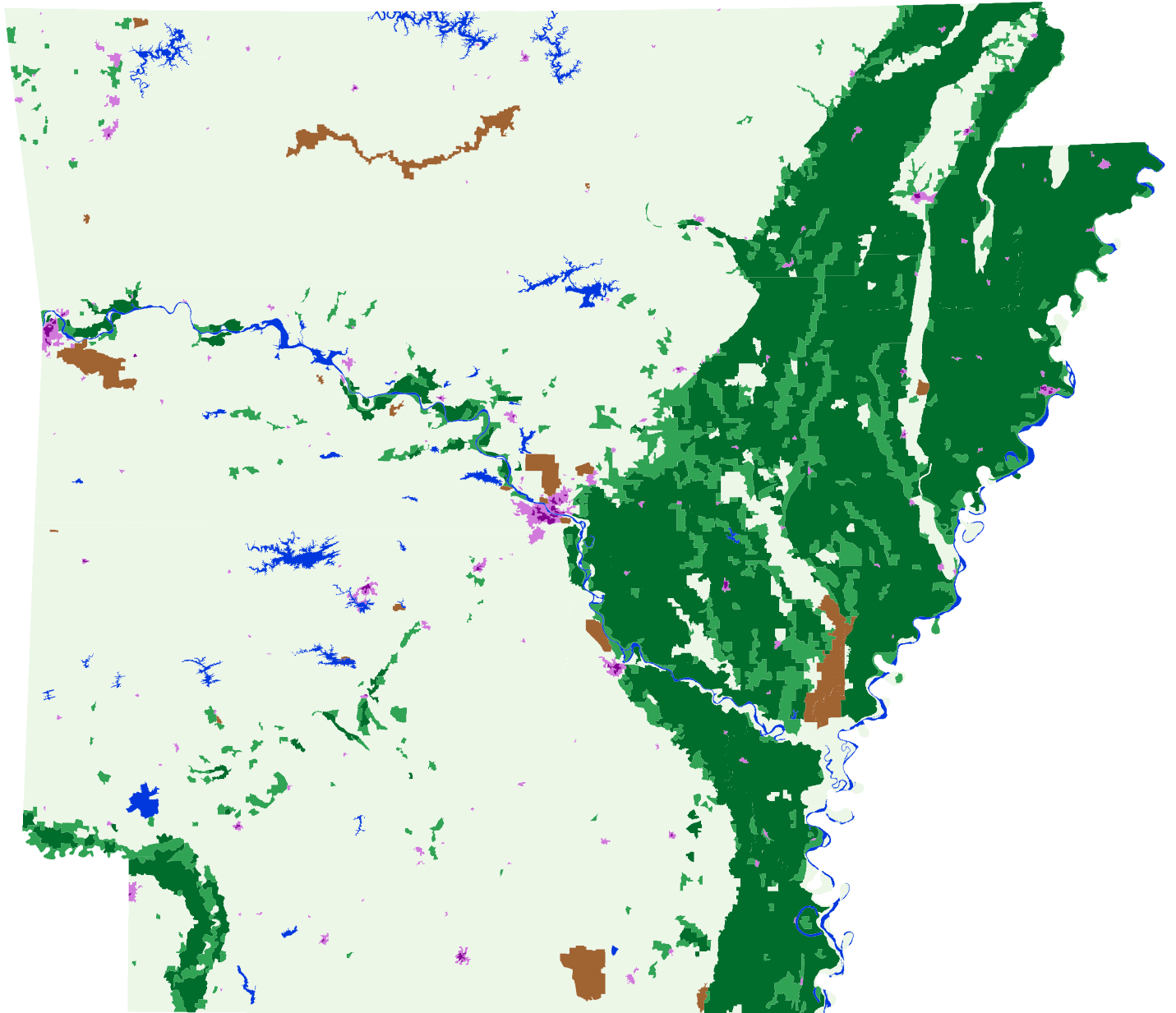









Stratification of Arkansas 2002



Land Use Strata

- | | |
|---|--|
|  > 75% Cultivated |  < 15% Cultivated |
|  25-75% Cultivated |  Non-agricultural |
|  Agri-urban: >100 Homes Per Sqmi |  Water |
|  Commercial: > 100 Homes Per Sqmi | |

